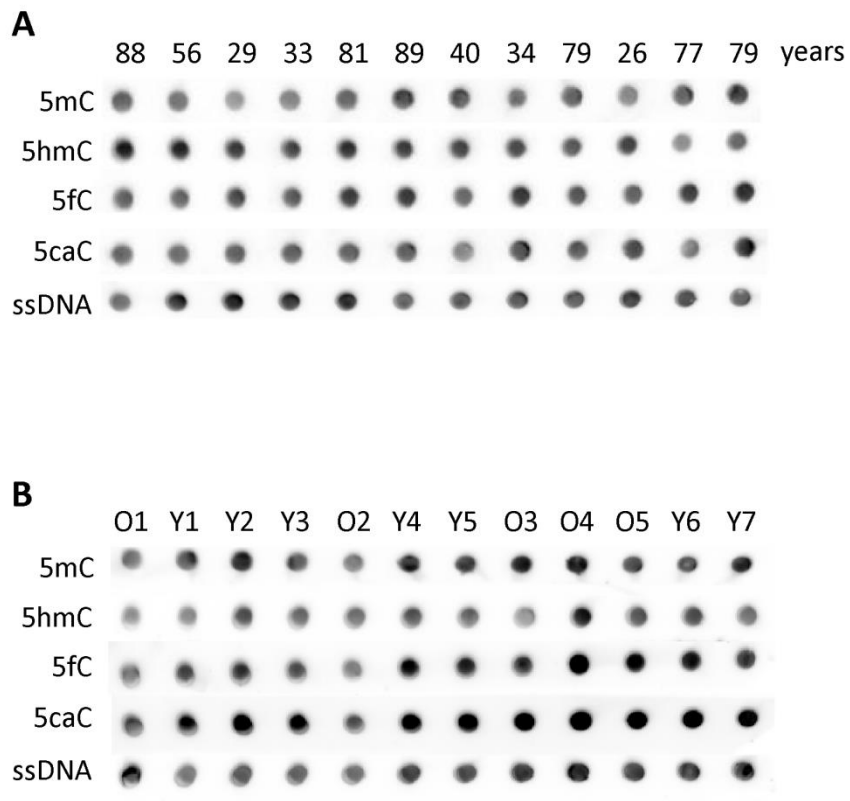
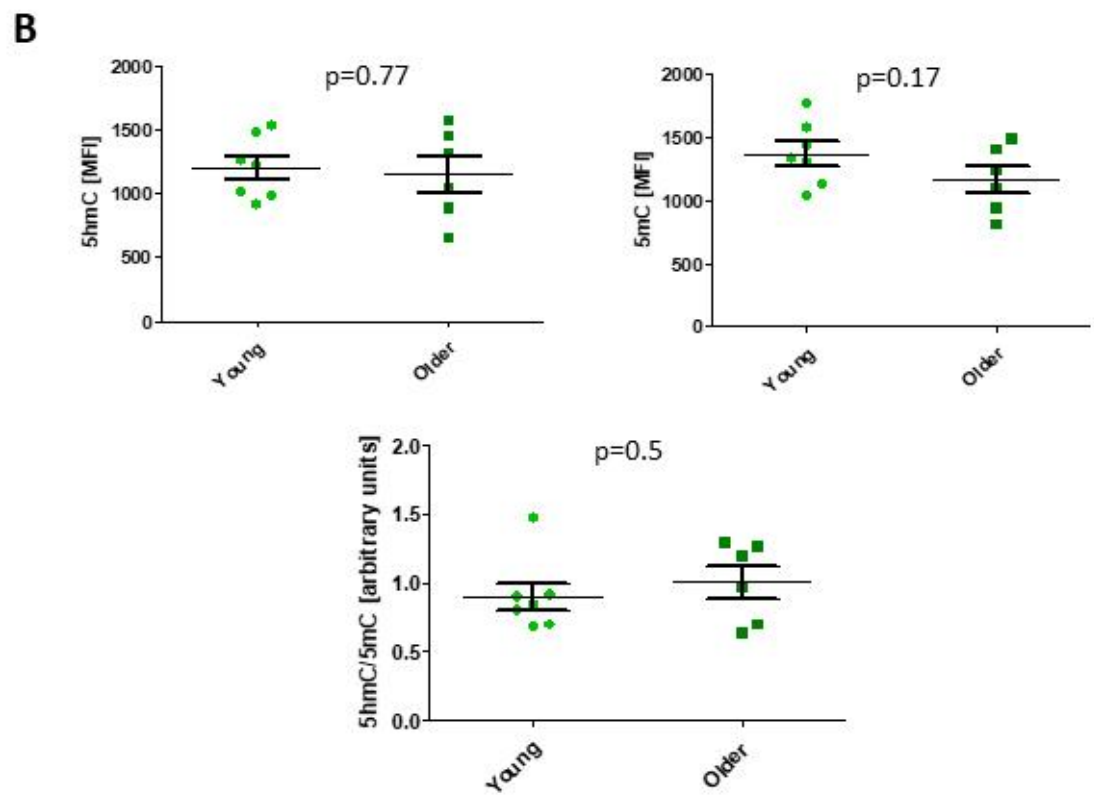
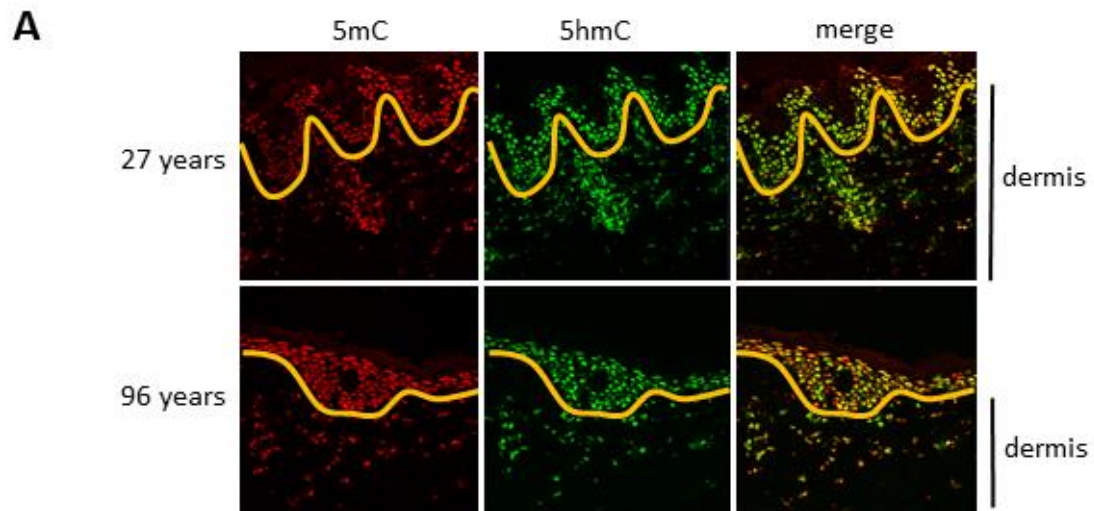


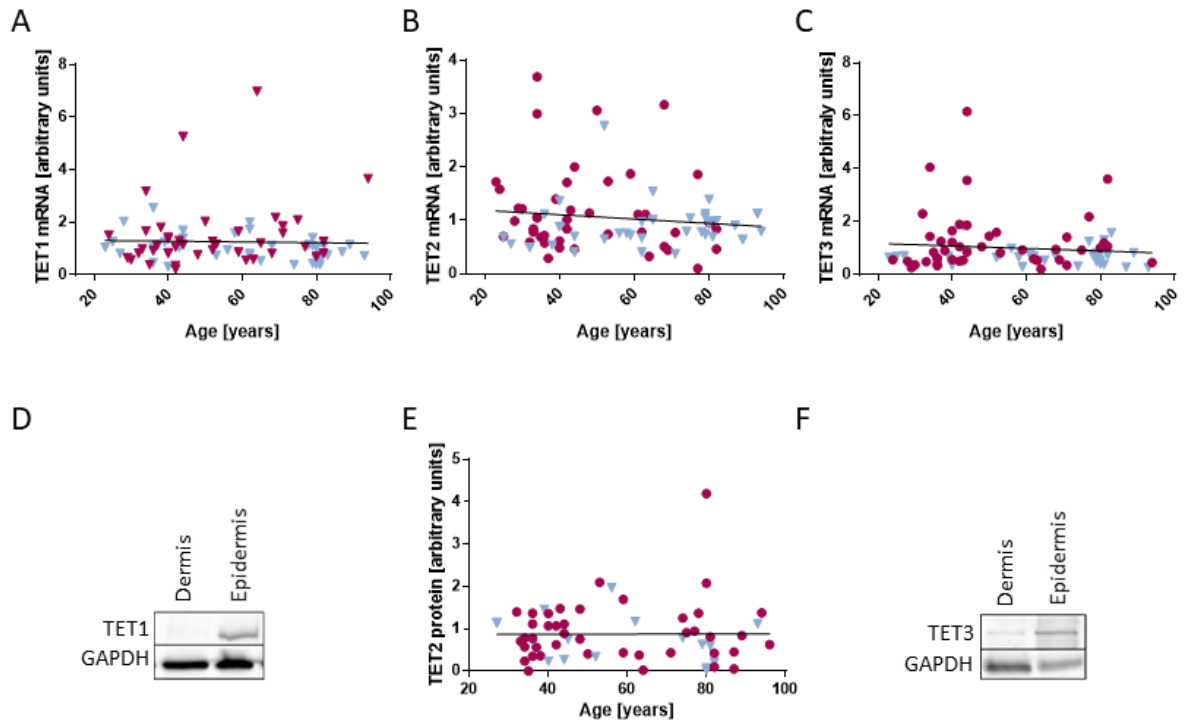
## Supplementary Materials



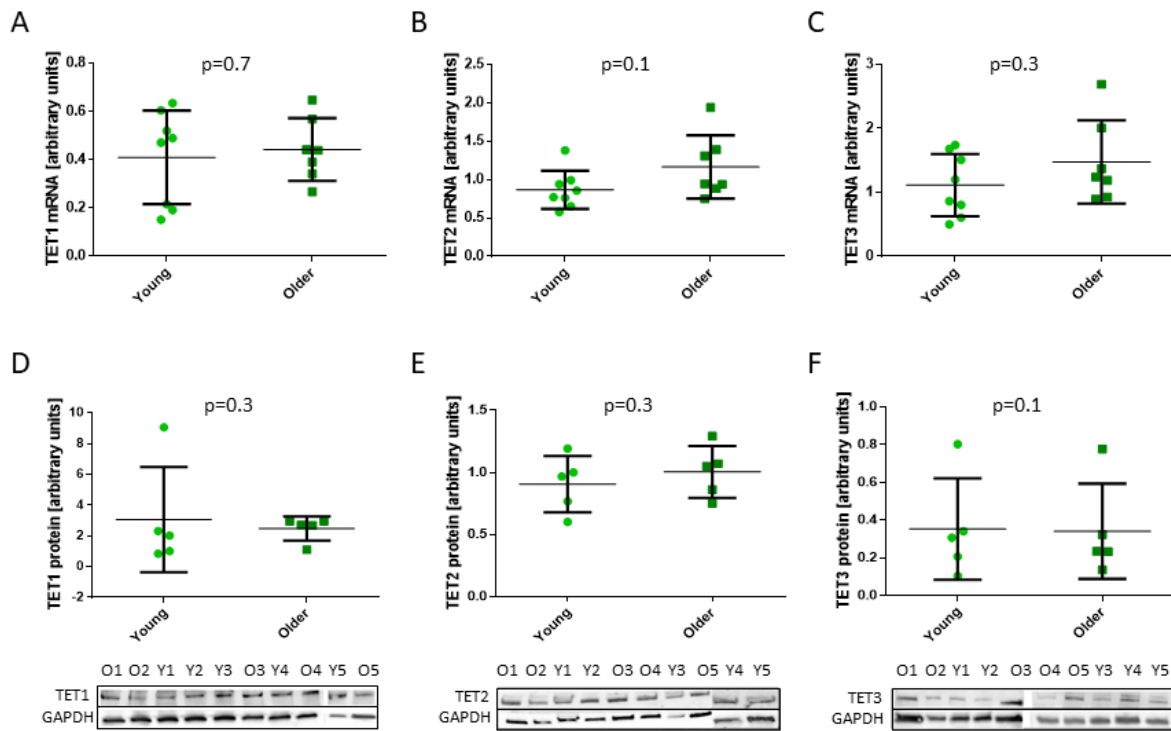
**Supplementary Figure S1.** Examples of dot blots evaluating global amounts of 5mC, 5hmC, 5fC, 5caC, and control ssDNA in individuals of various ages. A. Dot blots of DNA isolated from the whole human dermis. B. Dot blots of DNA isolated from primary fibroblast cultures originating from young (Y, 22–35 years) and older (O, 74–94 years) individuals.



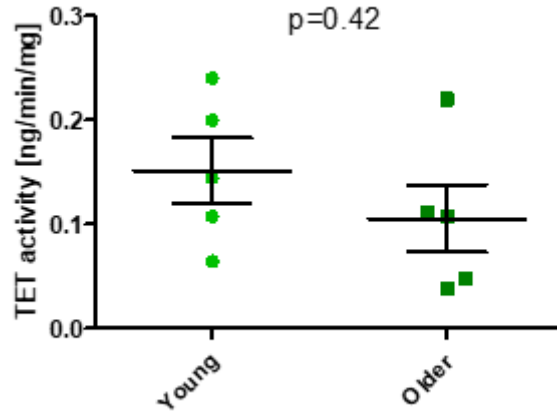
**Supplementary Figure S2.** A. Immunofluorescent detection of 5-methylcytosine (5mC) and 5-hydroxymethylcytosine (5hmC) in representative samples of whole-thickness skin of young (27 years) and age-advanced (96 years) individuals. Yellow lines divide dermis and epidermis. B. Results of the evaluation of the mean 5mC and 5hmC fluorescence intensity in dermal fibroblast nuclei using a confocal microscope and the ZEN 2012 version BLUE program. Each dot represents the mean fluorescence intensity of 100 nuclei in the dermis of a single study participant. The statistical analysis was performed with the Student's *t*-test. Young (22–35 years), older (74–94 years).



**Supplementary Figure S3.** Expression of TET1, TET2, and TET3 in the dermis of individuals of different ages. A., B., C. The expression of TET1, TET2, or TET3 mRNAs does not depend on age. The statistical analysis was performed with Spearman's correlation test. D. Immunoblot showing a lack of specific TET1 signal in the dermis. E. The expression of TET2 protein does not depend on age. The panel also shows an example of an immunoblot. F. Immunoblot showing a very weak specific TET3 signal in the dermis sample. In the majority of other samples, the TET3 signal was absent. The statistical analysis was performed with Spearman's correlation test. Purple circles: women. Blue triangles: men. Epidermis: positive control. GAPDH: internal loading control.



**Supplementary Figure S4.** Expression of TET1, TET2, and TET3 in primary fibroblasts. A., B., C. The expression of TET1, TET2, and TET3 mRNAs is similar in fibroblasts originating from young (22–35 years) and older (74–94 years) individuals. The statistical analysis was performed with the Student’s *t*-test. D., E., F. The expression of TET1, TET2, and TET3 proteins does not differ between fibroblasts originating from young (22–35 years) and older (74–94 years) individuals. Panels D., E., F. also show examples of immunoblots. The statistical analysis was performed with the Mann-Whitney *U*-test. Y: younger. O: older. GAPDH: internal loading control.



**Supplementary Figure S5.** TET proteins activity in primary fibroblasts originating from young (22–35 years) and older (74–94 years) individuals. The statistical analysis was performed with the Mann-Whitney *U*-test.

**Supplementary Table S1.** Age-related DHMRs in human dermal fibroblasts.

**MEDIPS wide window**

Chr	start	end	width	log2fold	adj. <i>p</i> -value	annotation	associated genes
chr4	9350551	9351450	900	6,44	8,73E-02	Distal Intergenic	USP17L28,USP17L27
chr3	63264601	63265050	450	3,58	3,05E-02	Intron	SYNPR
chr1	25283701	25285050	1350	3,51	5,39E-04	Exon	RSRP1,RHD
chr8	106508701	106509150	450	3,49	7,72E-02	Intron	OXR1
chr1	25285951	25287300	1350	3,45	4,78E-05	Intron	RSRP1,RHD
chr13	98364601	98365050	450	3,44	7,36E-02	Intron	FARP1
chr3	169557301	169557750	450	3,37	2,95E-02	Intron	MECOM
chr18	52973551	52974000	450	3,33	7,97E-02	Intron	DCC
chr10	89711101	89711550	450	3,25	9,35E-02	Exon	KIF20B
chr2	200465551	200466000	450	3,21	3,19E-02	Intron	SPATS2L
chr1	25274701	25276050	1350	3,17	3,48E-02	Intron	RSRP1,RHD
chr1	25329601	25330050	450	3,16	5,10E-02	3' UTR	RSRP1,RHD
chr1	25331851	25332300	450	3,14	5,90E-05	Intron	RSRP1,RHD
chr1	25312501	25312950	450	3,06	1,79E-02	Intron	RSRP1,RHD
chr12	13463551	13464000	450	3,05	7,97E-02	Intron	GRIN2B
chr2	30404701	30405150	450	3,02	5,32E-02	Distal Intergenic	LCLAT1
chr1	25321051	25321500	450	2,83	7,55E-02	Intron	RSRP1,RHD

chr1	57972151	57972600	450	2,81	9,80E-02	Intron	DAB1
chr3	36344701	36345150	450	2,81	8,76E-02	Distal Intergenic	STAC
chr9	118828351	118828800	450	2,81	6,46E-02	Distal Intergenic	LINC02578
chr1	25318801	25319250	450	2,81	7,15E-02	Intron	RSRP1,RHD
chr15	77196151	77196600	450	2,80	4,84E-02	Intron	PEAK1
chr11	55570051	55570500	450	2,77	4,64E-02	Promoter	OR4C16
chr3	9428851	9429300	450	2,75	6,74E-02	5' UTR	SETD5
chr2	49888801	49889250	450	2,71	7,36E-02	Exon	FSHR
chr1	16425451	16425900	450	2,54	8,59E-02	5' UTR	SPATA21
chr4	78406201	78406650	450	2,54	9,80E-02	Intron	FRAS1
chr15	45773101	45773550	450	2,46	9,80E-02	Intron	LOC105370802
chr1	25304851	25305300	450	2,38	1,52E-02	Intron	RSRP1,RHD
chr1	21123901	21124350	450	2,30	7,21E-02	Intron	EIF4G3
chr7	48560401	48560850	450	2,30	9,08E-02	Intron	ABCA13
chr18	48523501	48523950	450	2,28	9,80E-02	Distal Intergenic	CTIF
chr6	163437751	163438200	450	2,12	9,46E-02	Intron	QKI
chr1	25302601	25303050	450	2,12	7,91E-02	Intron	RSRP1,RHD
chr1	25292251	25293600	1350	2,10	1,38E-06	Intron	RSRP1,RHD
chr5	100171351	100171800	450	2,09	7,97E-02	Distal Intergenic	LOC100133050
chr1	221013451	221013900	450	2,02	8,76E-02	Distal Intergenic	HLX-AS1
chr2	41746051	41746500	450	2,01	8,76E-02	Distal Intergenic	LINC01913
chr2	29657251	29657700	450	1,91	9,38E-02	Intron	ALK
chr14	101169001	101169450	450	1,82	4,84E-02	Distal Intergenic	LINC02285
chr1	166662901	166663350	450	1,73	4,96E-02	Distal Intergenic	FMO9P
chr16	81595801	81596250	450	1,72	2,30E-02	Intron	CMIP
chr19	33504301	33504750	450	1,66	4,84E-02	Intron	PEPD
chr5	163507951	163508400	450	1,66	2,73E-02	Intron	MAT2B
chr5	119098801	119099250	450	1,66	9,74E-02	Intron	DMXL1
chr10	1860751	1861200	450	1,65	4,84E-02	Distal Intergenic	ADARB2
chr21	19431901	19432800	900	1,65	4,02E-02	Distal Intergenic	-
chr14	88584751	88585200	450	1,64	8,76E-02	Intron	ZC3H14
chr2	167633551	167634000	450	1,64	7,97E-02	Distal Intergenic	LOC105616981
chr3	24750001	24750450	450	1,62	4,84E-02	Intron	RARB
chr19	1629901	1630350	450	1,60	7,36E-02	Intron	TCF3
chr4	150087601	150088050	450	1,60	5,32E-02	Intron	DCLK2
chr19	11009251	11009700	450	1,59	2,73E-02	Intron	SMARCA4
chr4	75555001	75555450	450	1,57	6,48E-02	Promoter	ODAPH,THAP6
chr1	2186101	2186550	450	1,54	9,74E-02	3' UTR	FAAP20,PRKCZ-AS1,PRKCZ
chr3	114513751	114514200	450	1,54	7,91E-02	Intron	ZBTB20-AS5,ZBTB20
chr5	67573351	67573800	450	1,54	8,76E-02	Intron	LOC101928858
chr15	47640601	47641050	450	1,47	8,76E-02	Intron	SEMA6D
chr18	72913501	72913950	450	1,46	8,76E-02	Distal Intergenic	LOC100505797
chr8	25399351	25399800	450	1,41	7,91E-02	Intron	DOCK5
chr7	278101	278550	450	1,40	9,38E-02	Distal Intergenic	LOC442497

chr16	953551	954000	450	1,40	8,76E-02	Intron	LMF1
chr1	246796651	246797100	450	1,38	9,08E-02	Intron	LINC01341
chr18	12957751	12958200	450	1,38	7,97E-02	Intron	SEH1L
chr2	199820701	199821600	900	1,37	8,11E-02	Intron	FTCDNL1
chr14	96745951	96746850	900	1,37	4,03E-02	Intron	LINC02299
chr3	49672351	49672800	450	1,30	7,55E-02	Promoter	APEH,BSN
chr13	32597551	32598000	450	1,28	4,84E-02	Intron	PDS5B
chr4	62645851	62646300	450	1,28	3,05E-02	Distal Intergenic	ADGRL3-AS1
chr10	30328651	30329100	450	1,27	1,50E-02	Intron	MTPAP
chr21	36909901	36910350	450	1,24	7,21E-02	Intron	HLCS
chr7	144190801	144191250	450	1,23	2,87E-03	Intron	ARHGEF35,LOC101928605
chr17	19097551	19098000	450	1,20	7,99E-02	Distal Intergenic	SNORD3D
chr1	64974601	64975050	450	1,18	7,97E-02	Exon	LINC01359,JAK1
chr8	62874001	62874450	450	1,13	9,74E-02	Intron	NKAIN3
chr14	63229951	63230400	450	1,12	8,22E-03	Intron	RHOJ
chr7	144354601	144355050	450	1,11	4,84E-02	Promoter	ARHGEF5
chr4	37584901	37585800	900	1,03	4,60E-02	Intron	C4orf19,RELL1
chr21	8454601	8455050	450	0,96	5,32E-02	Distal Intergenic	FP236383.3-202
chr2	26517601	26518050	450	0,90	8,76E-02	Intron	OTOF
chr14	105055201	105055650	450	0,82	4,84E-02	5' UTR	GPR132
chr17	61402501	61403400	900	0,75	6,43E-02	3' UTR	TBX2-AS1,TBX2
chr16	16233301	16233750	450	0,71	8,76E-02	Intron	MIR3179-4
chr12	59328001	59328450	450	-0,45	5,45E-02	Distal Intergenic	SLC16A7
chr3	196099651	196100100	450	-0,54	8,37E-04	Distal Intergenic	TFRC
chrX	19543501	19543950	450	-0,64	2,73E-02	Intron	SH3KBP1
chrX	73080451	73080900	450	-0,73	3,07E-02	Promoter	PABPC1L2A
chr6	909001	909450	450	-0,77	3,80E-02	Exon	LINC01622
chr14	18656101	18656550	450	-0,87	5,32E-02	Distal Intergenic	LINC02297
chr18	76618801	76619250	450	-0,91	7,72E-02	Intron	LINC00683,LINC01927
chr1	6102901	6103350	450	-0,92	5,32E-02	3' UTR	CHD5,KCNAB2
chr6	909451	909900	450	-1,00	9,37E-02	Distal Intergenic	LINC01622
chr1	120267901	120268350	450	-1,03	6,54E-02	Intron	SEC22B
chrX	29977201	29977650	450	-1,08	4,94E-02	Distal Intergenic	MAGEB2
chr1	16780501	16780950	450	-1,15	6,46E-02	Intron	CROCC
chr7	158915701	158916150	450	-1,15	9,35E-02	Intron	WDR60
chrX	102436201	102436650	450	-1,15	3,66E-02	Intron	TMSB15A
chrX	72836101	72836550	450	-1,16	7,72E-02	Intron	FAM226A
chrX	3132451	3132900	450	-1,19	4,71E-02	Distal Intergenic	ARSF
chr15	20344951	20345400	450	-1,19	7,97E-02	Exon	CHEK2P2
chrX	50046301	50046750	450	-1,21	4,84E-02	Intron	CLCN5
chrX	85929301	85929750	450	-1,21	4,84E-02	Intron	CHM
chrX	74291851	74292300	450	-1,25	7,55E-02	Promoter	FTX,MIR374A,MIR545
chr3	89588701	89589150	450	-1,25	9,80E-02	Exon	EPHA3
chrX	50815351	50815800	450	-1,27	4,84E-02	Promoter	SHROOM4
chrX	85928851	85929300	450	-1,27	2,52E-02	Intron	CHM

chr5	3018601	3019050	450	-1,27	2,73E-02	Distal Intergenic	LINC01377
chr12	90738001	90738450	450	-1,33	7,72E-02	Distal Intergenic	LINC00615
chr7	14281201	14281650	450	-1,36	7,55E-02	Intron	DGKB
chrX	110414251	110414700	450	-1,36	6,46E-02	Intron	RTL9,AMMECR1
chr5	1626751	1627200	450	-1,36	7,63E-02	Exon	LOC728613
chrX	7378201	7378650	450	-1,38	3,74E-02	Distal Intergenic	STS
chr12	53187301	53187750	450	-1,43	6,54E-02	3' UTR	ZNF740,ITGB7
chr6	166784401	166784850	450	-1,44	5,32E-02	Intron	RPS6KA2
chr7	147549151	147549600	450	-1,44	9,08E-02	Intron	LOC105375556
chr7	14281651	14282100	450	-1,45	9,35E-02	Intron	DGKB
chrX	64487251	64487700	450	-1,46	7,63E-02	Distal Intergenic	MTMR8
chrX	48262951	48263400	450	-1,47	7,95E-02	Intron	SSX1
chrX	89827201	89827650	450	-1,47	7,72E-02	Distal Intergenic	TGIF2LX
chr7	111382201	111382650	450	-1,56	1,55E-02	Intron	IMMP2L
chr15	22141351	22141800	450	-1,59	1,67E-04	Distal Intergenic	LOC642131
chrX	3686401	3686850	450	-1,62	6,19E-02	Intron	PRKX
chr15	22140901	22141350	450	-1,66	1,47E-03	Distal Intergenic	LOC642131
chrX	149887351	149887800	450	-1,68	3,05E-02	Distal Intergenic	MAGEA8
chrX	101057401	101057850	450	-1,74	4,84E-02	Intron	TRMT2B
chr7	158916151	158916600	450	-1,74	2,30E-02	Intron	WDR60
chr3	174603601	174604050	450	-1,74	9,80E-02	Intron	NAALADL2
chr10	89527051	89527500	450	-1,80	7,55E-02	Intron	SLC16A12
chr13	69157801	69158250	450	-1,85	8,76E-02	Distal Intergenic	LINC00383
chr22	11922301	11922750	450	-1,89	5,16E-02	Distal Intergenic	FRG1FP
chr6	51735151	51735600	450	-2,01	8,32E-02	Intron	PKHD1
chrX	137206351	137206800	450	-2,09	2,73E-02	Distal Intergenic	GPR101
chr6	76407751	76408200	450	-2,12	9,18E-02	Distal Intergenic	LINC02540
chrX	88240501	88240950	450	-2,13	5,82E-02	Distal Intergenic	CPXCR1
chr1	25406101	25406550	450	-2,19	6,50E-02	Intron	RHCE
chr22	20587951	20588400	450	-2,20	9,74E-02	Exon	MED15
chr1	25405651	25406100	450	-2,24	2,30E-02	Intron	RHCE
chr9	35289901	35290350	450	-2,30	3,45E-02	Intron	UNC13B
chr6	4642201	4642650	450	-2,35	6,65E-02	Distal Intergenic	KU-MEL-3
chr3	180219601	180220050	450	-2,40	9,08E-02	Distal Intergenic	PEX5L
chrX	89767801	89768250	450	-2,47	2,30E-02	Distal Intergenic	TGIF2LX
chr4	6650101	6650550	450	-2,49	7,74E-02	Intron	LINC02482
chr6	51735601	51736050	450	-2,51	2,30E-02	Intron	PKHD1
chr13	68024251	68024700	450	-2,52	8,42E-02	Distal Intergenic	LINC00364
chr13	69468751	69469200	450	-2,53	1,40E-02	Distal Intergenic	LINC00383
chrX	51088501	51088950	450	-2,66	7,99E-02	Exon	LINC01284
chr11	10000801	10001250	450	-2,75	8,97E-02	Exon	SBF2
chrX	147693151	147693600	450	-2,80	5,80E-03	Distal Intergenic	FMR1
chrX	119997451	119997900	450	-2,93	7,91E-02	Intron	RHOXF1P1
chr14	106757551	106758000	450	-2,95	6,74E-02	Distal Intergenic	MIR5195
chr11	55616851	55617300	450	-3,03	7,00E-02	Distal Intergenic	OR4C11



<b>chrX</b>	6764401	6764850	450	-3,18	8,97E-02	Distal Intergenic	VCX3A
<b>chr2</b>	115168501	115168950	450	-3,31	2,74E-03	Intron	DPP10
<b>chrX</b>	88698151	88698600	450	-3,99	7,36E-02	Distal Intergenic	CPXCR1
<b>chr6</b>	117029701	117030150	450	-4,24	3,59E-02	Distal Intergenic	RFX6
<b>chr15</b>	68535451	68535900	450	-4,24	8,76E-02	Distal Intergenic	CORO2B
<b>chr1</b>	71516251	71516700	450	-4,29	6,05E-02	Intron	NEGR1
<b>chr4</b>	44492401	44492850	450	-4,29	7,55E-02	Distal Intergenic	KCTD8
<b>chr1</b>	71515801	71516250	450	-4,34	4,84E-02	Intron	NEGR1
<b>chrX</b>	82856701	82857150	450	-5,18	8,59E-02	Distal Intergenic	POU3F4
<b>chrX</b>	112947751	112948200	450	-5,42	7,55E-02	Distal Intergenic	AMOT

### MEDIPS narrow window

<b>Chr</b>	<b>start</b>	<b>end</b>	<b>width</b>	<b>log2fold</b>	<b>adj. p-value</b>	<b>annotation</b>	<b>associated genes</b>
<b>chr4</b>	9351001	9351100	100	6,63	9,19E-02	Distal Intergenic	USP17L28
<b>chr1</b>	25312701	25312750	50	4,32	9,19E-03	Intron	RSRP1,RHD
<b>chr4</b>	65423251	65423300	50	4,27	9,19E-03	Intron	EPHA5
<b>chr1</b>	25332101	25332200	100	4,00	1,99E-06	Intron	RSRP1,RHD
<b>chr2</b>	200465801	200465900	100	3,97	7,16E-02	Intron	SPATS2L
<b>chr1</b>	25330051	25330150	100	3,93	2,84E-02	3' UTR	RSRP1,RHD
<b>chr1</b>	25283951	25284000	50	3,91	9,75E-02	Intron	RSRP1,RHD
<b>chr16</b>	83481401	83481450	50	3,91	9,61E-02	Intron	CDH13
<b>chr11</b>	3178201	3178250	50	3,91	1,17E-03	Distal Intergenic	OSBPL5
<b>chr1</b>	25286501	25286900	400	3,73	1,08E-07	Intron	RSRP1,RHD
<b>chr1</b>	25284801	25284850	50	3,47	2,02E-02	Intron	RSRP1,RHD
<b>chr1</b>	25284451	25284750	300	3,46	7,39E-03	Exon	RSRP1,RHD
<b>chr1</b>	25284201	25284250	50	3,38	1,18E-03	Intron	RSRP1,RHD
<b>chr2</b>	40817001	40817050	50	3,29	2,68E-02	Distal Intergenic	SLC8A1
<b>chr1</b>	25284351	25284400	50	3,28	4,86E-03	Intron	RSRP1,RHD
<b>chr1</b>	25293401	25293450	50	3,27	3,31E-05	Intron	RSRP1,RHD
<b>chr1</b>	25286401	25286450	50	3,24	1,25E-03	Intron	RSRP1,RHD
<b>chr1</b>	25332251	25332300	50	3,23	1,55E-02	Intron	RSRP1,RHD
<b>chr1</b>	25274701	25274950	250	3,18	1,24E-02	Intron	RSRP1,RHD
<b>chr3</b>	141814001	141814050	50	3,16	6,37E-02	Intron	GRK7
<b>chr1</b>	25286301	25286350	50	3,16	9,89E-03	Intron	RSRP1,RHD
<b>chr12</b>	132725201	132725250	50	3,16	8,58E-02	Distal Intergenic	PGAM5,ANKLE2
<b>chr1</b>	25275051	25275200	150	3,12	2,58E-03	Intron	RSRP1,RHD
<b>chr1</b>	25331801	25332050	250	3,11	6,61E-03	Intron	RSRP1,RHD
<b>chr4</b>	151972201	151972250	50	3,07	9,28E-02	Distal Intergenic	LINC02273
<b>chr1</b>	25286951	25287100	150	3,02	1,16E-04	Intron	RSRP1,RHD
<b>chr1</b>	25275301	25275400	100	2,98	3,91E-02	Intron	RSRP1,RHD
<b>chr1</b>	25287151	25287200	50	2,89	1,17E-02	Intron	RSRP1,RHD
<b>chr14</b>	103814051	103814100	50	2,89	6,00E-02	Intron	PPP1R13B

chr18	23420951	23421000	50	2,73	9,61E-02	Intron	TMEM241
chr1	25293301	25293350	50	2,73	7,11E-03	Intron	RSRP1,RHD
chrX	23227151	23227250	100	2,69	9,01E-02	Intron	PTCHD1-AS
chr1	25318701	25318750	50	2,66	9,07E-02	Intron	RSRP1,RHD
chr2	41746101	41746150	50	2,61	3,52E-02	Distal Intergenic	LINC01913
chr10	6158001	6158100	100	2,51	4,16E-02	Intron	PFKFB3
chr3	159668751	159668800	50	2,49	9,75E-02	Intron	IQCJ-SCHIP1,SCHIP1
chr2	234448551	234448600	50	2,44	6,30E-02	Intron	LINC01891
chr19	51792651	51792700	50	2,35	7,37E-02	Intron	FPR1,FPR3
chr7	144247851	144247900	50	2,34	3,06E-02	Intron	LOC101928605
chr1	25293201	25293250	50	2,33	3,21E-05	Intron	RSRP1,RHD
chr13	51457351	51457400	50	2,32	7,96E-02	Intron	INTS6-AS1,INTS6
chr13	51457601	51457650	50	2,30	7,16E-02	Intron	INTS6-AS1,INTS6
chr16	54979551	54979600	50	2,30	7,55E-02	Distal Intergenic	IRX5
chr12	85672001	85672050	50	2,30	5,91E-02	Distal Intergenic	RASSF9
chr9	67578951	67579050	100	2,28	7,12E-02	Distal Intergenic	CBWD5
chr1	25305701	25305850	150	2,27	6,19E-02	Intron	RSRP1,RHD
chr17	43056251	43056300	50	2,26	7,35E-02	Intron	BRCA1
chr9	77794501	77794550	50	2,22	2,85E-02	Exon	GNAQ
chr14	83529651	83529750	100	2,13	3,08E-02	Distal Intergenic	LINC02301
chr19	33504651	33504750	100	2,11	2,43E-02	Intron	PEPD
chr8	138943551	138943600	50	2,10	6,26E-02	Distal Intergenic	COL22A1
chr14	63229951	63230000	50	2,08	7,26E-02	Intron	RHOJ
chr3	108391401	108391450	50	2,08	9,06E-02	Intron	MYH15
chr1	25292351	25292400	50	2,05	1,11E-02	Intron	RSRP1,RHD
chr19	11009301	11009350	50	2,05	8,88E-02	Intron	SMARCA4
chr1	25292451	25292550	100	2,04	2,57E-03	Intron	RSRP1,RHD
chr11	115697851	115697900	50	2,03	3,82E-02	Intron	LINC00900
chr1	25292601	25292650	50	2,03	2,60E-06	Intron	RSRP1,RHD
chr14	81590651	81590700	50	2,02	9,07E-02	Distal Intergenic	LINC01467
chr1	25292951	25293050	100	2,02	1,27E-06	Intron	RSRP1,RHD
chr2	109845501	109845550	50	1,97	7,53E-02	Intron	RGPD6
chr1	153580251	153580300	50	1,97	9,61E-02	Distal Intergenic	S100A2
chr1	25295601	25295650	50	1,96	7,03E-02	Intron	RSRP1,RHD
chr1	232947251	232947300	50	1,94	7,69E-02	Distal Intergenic	NTPCR
chr12	4181801	4182000	200	1,88	6,05E-02	Distal Intergenic	TIGAR
chr6	76219501	76219550	50	1,87	6,97E-02	Distal Intergenic	IMPG1
chr4	28588601	28588650	50	1,87	1,99E-02	Intron	MIR4275
chr17	71545501	71545550	50	1,86	7,53E-02	Distal Intergenic	CASC17
chr16	81596001	81596050	50	1,86	3,81E-02	Intron	CMIP
chr16	81596101	81596150	50	1,85	9,75E-02	Intron	CMIP
chr21	19432301	19432350	50	1,83	2,86E-02	Distal Intergenic	-
chr1	166663301	166663350	50	1,81	8,25E-02	Distal Intergenic	FMO9P
chr2	26138151	26138200	50	1,81	4,91E-02	Distal Intergenic	GAREM2,RAB10
chr22	18981701	18981750	50	1,79	9,87E-02	Intron	DGCR5

chr3	128694551	128694750	200	1,79	4,70E-02	Distal Intergenic	RPN1
chr2	135981401	135981450	50	1,75	6,96E-02	Intron	DARS,DARS-AS1
chr16	81596201	81596250	50	1,74	9,67E-02	Intron	CMIP
chr14	63230151	63230200	50	1,70	3,73E-02	Intron	RHOJ
chr14	96746601	96746650	50	1,67	2,86E-02	Intron	LINC02299
chr2	26138001	26138050	50	1,66	9,75E-02	Distal Intergenic	GAREM2,RAB10
chr12	124433251	124433300	50	1,65	7,53E-02	Intron	NCOR2
chr10	1860951	1861050	100	1,65	6,38E-02	Distal Intergenic	ADARB2
chr8	25399601	25399650	50	1,63	2,35E-02	Intron	DOCK5
chr14	96746351	96746400	50	1,63	9,75E-02	Intron	LINC02299
chr8	133890051	133890100	50	1,63	8,84E-02	Intron	LOC101927822
chr2	2745801	2745850	50	1,63	7,73E-02	Distal Intergenic	LINC01250
chr2	2746001	2746050	50	1,62	9,67E-02	Distal Intergenic	LINC01250
chr19	45246051	45246100	50	1,61	7,69E-02	Intron	MARK4,EXOC3L2
chr21	15133551	15133600	50	1,60	6,97E-02	Distal Intergenic	AF222684.1-201
chr1	92611651	92611700	50	1,60	6,03E-02	Intron	EVI5
chr2	227184901	227185000	100	1,59	5,22E-02	Intron	COL4A3
chr13	32597801	32597850	50	1,59	4,16E-02	Intron	PDS5B
chr1	156716951	156717050	100	1,58	8,84E-02	Distal Intergenic	CRABP2,ISG20L2
chr21	8463601	8463650	50	1,54	6,29E-02	Distal Intergenic	-
chr2	199821151	199821300	150	1,53	5,11E-02	Intron	FTCDNL1
chr11	49295851	49295900	50	1,49	6,26E-02	Distal Intergenic	FOLH1
chr15	58873951	58874000	50	1,43	9,49E-02	Intron	RNF111
chr19	53223851	53223900	50	1,41	9,48E-02	Distal Intergenic	ZNF665
chr6	11709501	11709550	50	1,37	9,19E-02	Distal Intergenic	ADTRP
chr1	15675101	15675150	50	1,37	3,35E-02	Distal Intergenic	PLEKHM2
chr17	19097751	19097800	50	1,36	4,32E-02	Distal Intergenic	SNORD3D
chr3	72022401	72022450	50	1,35	2,92E-02	Distal Intergenic	LINC00870
chr14	49568901	49568950	50	1,35	9,75E-02	Distal Intergenic	RN7SL1,RPS29
chr7	144191001	144191150	150	1,35	4,47E-03	Intron	ARHGEF35,LOC101928605
chr20	56560501	56560550	50	1,31	7,41E-02	Distal Intergenic	LINC01716
chr19	366301	366450	150	1,31	7,76E-03	Intron	THEG
chr19	47196001	47196100	100	1,27	5,84E-02	Intron	SAE1
chr12	64483951	64484000	50	1,24	2,52E-02	Intron	TBK1
chr10	30328801	30328850	50	1,24	4,55E-02	Intron	MTPAP
chr4	37585101	37585150	50	1,20	4,72E-02	Intron	C4orf19
chr12	3075101	3075150	50	1,20	9,56E-02	Promoter	TSPAN9
chr2	49123001	49123050	50	1,17	4,25E-02	Intron	FSHR
chr1	15675201	15675250	50	1,16	2,02E-02	Distal Intergenic	PLEKHM2
chr13	50172251	50172300	50	1,15	7,42E-02	Exon	DLEU1,ST13P4
chr19	18913001	18913050	50	1,07	9,31E-02	3' UTR	COPE,HOMER3
chr2	26517901	26517950	50	1,01	1,45E-02	Intron	OTOF
chr14	105055501	105055650	150	0,87	4,78E-02	5' UTR	GPR132
chr21	8454551	8454600	50	0,81	9,56E-02	Distal Intergenic	FP236383.3-202
chr16	16233251	16233350	100	0,79	5,23E-02	Intron	MIR3179-4

chr17	61402901	61402950	50	0,77	7,32E-02	Intron	TBX2-AS1,TBX2
chr19	54055101	54055150	50	0,59	6,29E-02	Intron	CACNG6
chr3	196099751	196099850	100	-0,56	1,57E-02	Distal Intergenic	TFRC
chr12	59328401	59328450	50	-0,65	4,24E-02	Distal Intergenic	SLC16A7
chr15	75783151	75783200	50	-0,65	9,75E-02	Exon	MIR4313
chr12	448751	448800	50	-0,66	5,91E-02	Distal Intergenic	B4GALNT3
chr20	47098601	47098650	50	-0,67	9,07E-02	Intron	EYA2
chrX	73080851	73080900	50	-0,77	2,68E-02	Promoter	PABPC1L2A
chr6	909151	909300	150	-0,77	1,27E-02	Distal Intergenic	LINC01622
chr19	50249551	50249600	50	-0,85	3,82E-02	Intron	MYH14
chrX	71541551	71541600	50	-0,86	6,92E-02	Intron	OGT
chrX	73080651	73080750	100	-0,87	3,86E-02	Promoter	PABPC1L2A
chr12	72758251	72758300	50	-0,91	8,06E-02	Distal Intergenic	LINC02444
chr1	6103001	6103100	100	-0,91	6,43E-02	3' UTR	CHD5,KCNAB2
chr18	76618801	76618850	50	-0,91	6,26E-02	Intron	LINC00683,LINC01927
chrX	13050701	13050750	50	-0,92	6,97E-02	Distal Intergenic	FAM9C
chr17	505101	505150	50	-0,94	9,42E-02	Intron	RFLNB,VPS53
chr6	909351	909600	250	-0,95	6,20E-02	Distal Intergenic	LINC01622
chr4	1144451	1144600	150	-0,98	1,64E-02	Intron	TMED11P
chr7	158915751	158915800	50	-1,03	9,75E-02	Intron	WDR60
chrX	55069801	55069900	100	-1,06	8,01E-02	Distal Intergenic	PAGE2B
chr3	196099551	196099650	100	-1,06	4,58E-02	Distal Intergenic	TFRC
chr1	34019751	34019800	50	-1,13	9,61E-02	Intron	CSMD2
chr1	6103151	6103200	50	-1,13	3,65E-02	3' UTR	CHD5,KCNAB2
chr1	16780401	16780450	50	-1,13	7,53E-02	Intron	CROCC
chr9	129641201	129641250	50	-1,17	4,72E-02	Promoter	ASB6
chr7	45084401	45084450	50	-1,18	8,25E-02	Exon	NACAD
chrX	102436301	102436350	50	-1,20	4,32E-02	Intron	TMSB15A
chrX	3132551	3132650	100	-1,20	5,52E-02	Distal Intergenic	ARSF
chr2	58573301	58573400	100	-1,22	6,88E-02	Intron	LINC01122
chrX	50815401	50815450	50	-1,22	8,81E-02	Promoter	SHROOM4
chr9	129060751	129060800	50	-1,23	9,49E-02	Intron	MIGA2
chrX	85929051	85929100	50	-1,24	8,70E-02	Intron	CHM
chrX	85929201	85929250	50	-1,30	3,04E-02	Intron	CHM
chrX	46379051	46379100	50	-1,33	3,82E-02	Distal Intergenic	LINC01186
chrX	53863851	53863900	50	-1,34	3,82E-02	Distal Intergenic	HUWE1
chr1	16780551	16780600	50	-1,35	1,45E-02	Intron	CROCC
chrX	46378901	46378950	50	-1,42	6,97E-02	Distal Intergenic	LINC01186
chrX	56130201	56130250	50	-1,47	6,03E-02	Distal Intergenic	KLF8
chrX	56130101	56130150	50	-1,47	3,95E-02	Distal Intergenic	KLF8
chr7	158915951	158916150	200	-1,52	5,81E-02	Intron	WDR60
chr22	11818351	11818400	50	-1,61	7,74E-02	Distal Intergenic	FRG1FP
chr15	22141251	22141550	300	-1,62	5,33E-03	Distal Intergenic	LOC642131
chr14	87888801	87888850	50	-1,63	4,32E-02	Intron	GALC
chrX	110414551	110414600	50	-1,64	4,86E-02	Intron	RTL9,AMMECR1

chr6	166784301	166784400	100	-1,64	3,72E-02	Intron	RPS6KA2
chr1	110528501	110528550	50	-1,65	7,73E-02	Intron	KCNA2
chrX	48263001	48263050	50	-1,68	7,96E-02	Intron	SSX1
chr22	11818451	11818500	50	-1,69	7,90E-02	Distal Intergenic	FRG1FP
chr7	147549301	147549350	50	-1,71	8,58E-02	Intron	LOC105375556
chr7	14281701	14281750	50	-1,72	3,27E-02	Intron	DGKB
chrX	149887551	149887600	50	-1,72	9,28E-02	Distal Intergenic	MAGEA8
chrX	32177551	32177600	50	-1,73	9,56E-02	Intron	DMD
chr15	22141151	22141200	50	-1,76	1,68E-02	Distal Intergenic	LOC642131
chr14	70791701	70791750	50	-1,76	4,24E-02	Intron	MAP3K9
chr22	11922551	11922600	50	-1,88	4,72E-02	Distal Intergenic	FRG1FP
chr7	14281501	14281550	50	-1,94	2,67E-03	Intron	DGKB
chr7	29355201	29355250	50	-2,02	7,83E-02	Intron	CHN2
chrX	150541201	150541250	50	-2,06	7,73E-02	Distal Intergenic	MTM1
chr9	76575301	76575350	50	-2,07	2,86E-02	Intron	GCNT1
chrX	6533751	6533850	100	-2,07	1,63E-02	Promoter	VCX3A
chrX	88240651	88240700	50	-2,08	4,25E-02	Distal Intergenic	CPXCR1
chrX	42943701	42943750	50	-2,18	3,25E-02	Distal Intergenic	PPP1R2C
chr1	25405901	25405950	50	-2,29	7,13E-03	Intron	RHCE
chr9	90970851	90970900	50	-2,30	4,55E-02	Distal Intergenic	LINC00484
chr5	107490451	107490500	50	-2,35	7,25E-02	Intron	EFNA5
chr1	25406201	25406450	250	-2,37	1,27E-02	Intron	RHCE
chr12	53705251	53705300	50	-2,38	4,77E-02	Distal Intergenic	CALCOCO1
chr20	18197651	18197700	50	-2,40	4,72E-02	Distal Intergenic	KAT14
chr10	4167301	4167400	100	-2,40	9,75E-02	Distal Intergenic	LINC00702
chr12	84754851	84754900	50	-2,41	7,73E-02	Distal Intergenic	SLC6A15
chr1	25406001	25406050	50	-2,48	8,44E-05	Intron	RHCE
chr22	15739051	15739100	50	-2,52	9,75E-02	Distal Intergenic	LINC01297
chr10	16663451	16663500	50	-2,52	9,75E-02	Intron	RSU1
chr6	51735501	51735550	50	-2,54	2,20E-02	Intron	PKHD1
chr10	89527201	89527300	100	-2,61	5,49E-02	Intron	SLC16A12
chrX	137206451	137206500	50	-2,62	3,26E-02	Distal Intergenic	GPR101
chrX	147693551	147693600	50	-2,66	9,67E-02	Distal Intergenic	FMR1-AS1
chr10	124292801	124292850	50	-2,70	2,02E-02	Distal Intergenic	OAT
chrX	137206651	137206700	50	-2,73	4,72E-02	Distal Intergenic	GPR101
chr7	158916351	158916700	350	-2,74	4,67E-02	Intron	WDR60
chrX	28448051	28448100	50	-2,83	5,91E-02	Distal Intergenic	MIR6134
chr6	51735601	51735650	50	-2,89	3,20E-03	Intron	PKHD1
chr4	6650151	6650200	50	-2,90	7,56E-03	Intron	LINC02482
chr14	71365351	71365400	50	-2,92	9,56E-02	Intron	SIPA1L1
chr7	2064251	2064300	50	-2,93	3,74E-02	Intron	MAD1L1
chr9	35289801	35289850	50	-3,05	5,30E-02	Intron	UNC13B
chrX	120251901	120251950	50	-3,09	9,28E-02	Promoter	ZBTB33
chr20	52615601	52615650	50	-3,09	9,28E-02	Intron	LINC01524
chrX	137206351	137206400	50	-3,11	3,44E-02	Distal Intergenic	GPR101

chr9	35289901	35289950	50	-3,12	2,48E-02	Intron	UNC13B
chr12	72362451	72362500	50	-3,27	7,53E-02	Intron	TRHDE
chr14	106101151	106101200	50	-3,60	1,95E-02	Distal Intergenic	LINC00226
chrX	83190601	83190650	50	-3,89	4,32E-02	Distal Intergenic	POU3F4
chr3	175051801	175051900	100	-3,92	6,16E-02	Intron	NAALADL2
chr6	57935601	57935650	50	-3,99	6,97E-02	Intron	LINC00680-GUSBP4
chr4	176689501	176689550	50	-3,99	6,97E-02	Exon	VEGFC
chr1	71516151	71516200	50	-4,15	9,61E-02	Intron	NEGR1
chr14	106097001	106097050	50	-4,16	7,92E-02	Distal Intergenic	LINC00226
chr2	115168651	115168750	100	-4,34	3,69E-03	Intron	DPP10
chr11	55617151	55617250	100	-4,81	2,17E-02	Distal Intergenic	OR4C11
chr18	45729201	45729250	50	-5,12	7,53E-02	5' UTR	SLC14A1
chrX	123058301	123058350	50	-5,12	7,53E-02	Distal Intergenic	GRIA3
chrX	82856801	82856850	50	-5,12	7,53E-02	Distal Intergenic	POU3F4
chr13	69469001	69469150	150	-5,16	5,78E-04	Distal Intergenic	LINC00383
chrX	123058201	123058250	50	-5,18	4,95E-02	Distal Intergenic	GRIA3
chr9	124658701	124658750	50	-5,37	8,20E-02	Promoter	MIR181A2HG,NR6A1
chrX	89767851	89767900	50	-5,47	3,45E-02	Distal Intergenic	TGIF2LX
chr1	228558351	228558400	50	-6,26	1,99E-02	Distal Intergenic	BTNL10

#### DiffBind wide window

Chr	start	end	width	log2fold	adj. p-value	annotation	associated genes
chr1	25292446	25293163	718	3,34	3,71E-03	Intron	RSRP1,RHD
chr1	25323259	25323603	345	2,82	6,16E-02	Intron	RSRP1,RHD
chr16	952540	954220	1681	2,62	9,14E-03	Exon	LMF1
chr9	61944523	61944932	410	2,46	3,95E-03	Intron	FAM27C
chr15	30182742	30183080	339	2,41	5,17E-05	Distal Intergenic	LINC02249
chr9	61867523	61868052	530	2,32	7,70E-03	Distal Intergenic	FAM27C
chr11	70345235	70345519	285	2,31	6,47E-02	Intron	PPFIA1
chr2	240680748	240681090	343	2,28	3,50E-02	Promoter	AQP12B
chrX	268926	270514	1589	2,28	4,80E-02	Distal Intergenic	XG
chr2	107906499	107906787	289	2,28	7,15E-02	Distal Intergenic	RGPD4
chr21	13368082	13368420	339	2,01	1,30E-02	Distal Intergenic	-
chr9	63776344	63776715	372	1,80	4,50E-02	Distal Intergenic	LOC286297
chr7	144236412	144236927	516	1,77	4,33E-02	Intron	LOC101928605
chr3	128694656	128695095	440	1,70	2,50E-02	Distal Intergenic	RPN1
chr21	8448539	8449728	1190	1,66	4,73E-02	Distal Intergenic	FP236383.3-202
chr16	88500924	88501785	862	1,64	6,81E-02	Intron	ZFPM1
chr13	18230159	18230726	568	1,60	5,74E-02	Exon	FAM230C
chr15	48529745	48530427	683	1,53	3,37E-02	Intron	FBN1
chr20	63234004	63234398	395	1,50	7,38E-03	Promoter	BIRC7,MIR3196
chr10	30328698	30329009	312	1,43	3,96E-03	Intron	MTPAP
chr3	103896348	103896693	346	1,43	3,50E-02	Distal Intergenic	MIR548AB

chr10	65524826	65525155	330	1,38	2,38E-02	Distal Intergenic	LINC01515
chr16	18286591	18286921	331	1,33	4,80E-02	Distal Intergenic	MIR6770-2
chrX	12193586	12193975	390	1,32	9,11E-02	Intron	FRMPD4
chr6	28237312	28237616	305	1,29	7,70E-03	Distal Intergenic	ZSCAN9
chr8	109762969	109763258	290	1,29	4,80E-02	Distal Intergenic	SYBU
chr20	56560647	56561031	385	1,28	7,70E-03	Distal Intergenic	LINC01716
chr9	62039183	62039604	422	1,26	7,70E-03	Intron	FAM27C
chr16	19934436	19934742	307	1,26	4,43E-02	Distal Intergenic	GPRC5B
chr4	15884899	15885193	295	1,24	5,93E-02	Distal Intergenic	FGFBP1
chr1	120465046	120465479	434	1,24	9,14E-02	Exon	NBPF8
chr12	64483872	64484249	378	1,22	7,70E-03	Exon	TBK1
chr2	39005664	39006012	349	1,21	3,09E-02	Intron	SOS1
chr6	149983781	149984605	825	1,18	5,07E-02	Distal Intergenic	ULBP1
chr2	128921270	128921584	315	1,18	6,16E-02	Distal Intergenic	LINC01854
chr20	23316554	23316854	301	1,17	2,34E-02	Distal Intergenic	NXT1
chr9	118140757	118141085	329	1,16	1,41E-02	Distal Intergenic	TLR4
chr2	7165126	7165427	302	1,16	4,03E-02	Distal Intergenic	LOC101929452
chr7	144363448	144363881	434	1,16	8,68E-02	Exon	ARHGEF5
chr11	109294490	109294799	310	1,15	9,97E-02	Distal Intergenic	C11orf87
chr2	219593845	219594219	375	1,14	4,05E-02	Distal Intergenic	STK11IP
chr22	42660813	42661116	304	1,14	7,74E-02	Distal Intergenic	CYB5R3
chr9	30181504	30181782	279	1,13	9,12E-02	Distal Intergenic	LINC01242
chr5	89033043	89033454	412	1,12	7,61E-02	Intron	MEF2C-AS1
chr7	3160844	3161143	300	1,12	7,74E-02	Intron	LOC100129603
chr4	127548091	127548474	384	1,10	1,63E-02	Distal Intergenic	INTU
chr9	341512	341785	274	1,10	5,93E-02	Intron	DOCK8
chr8	18155143	18155434	292	1,10	8,49E-02	Distal Intergenic	NAT1
chr10	109968563	109968873	311	1,09	3,00E-02	Intron	ADD3-AS1
chr10	61487775	61488056	282	1,08	7,38E-03	Distal Intergenic	TMEM26
chr1	181539087	181539408	322	1,08	9,65E-02	Intron	CACNA1E
chr5	15454662	15455001	340	1,07	7,65E-02	Distal Intergenic	FBXL7
chr8	63776758	63777174	417	1,07	7,77E-02	Intron	LINC01414,LINC01289
chr1	80236173	80236514	342	1,07	9,55E-02	Distal Intergenic	LINC01781
chr16	49399328	49399675	348	1,06	8,79E-02	3' UTR	C16orf78
chr18	3726226	3726623	398	1,05	7,40E-03	Intron	DLGAP1
chr4	23659029	23659346	318	1,05	7,71E-02	Intron	PPARGC1A
chr1	12369040	12369323	284	1,04	5,79E-02	Intron	VPS13D
chr6	36338257	36338622	366	1,04	8,35E-02	Promoter	C6orf222
chr2	143013079	143013446	368	1,03	5,68E-02	Intron	KYNU
chr11	113213884	113214287	404	1,03	5,93E-02	Intron	NCAM1
chr2	47563126	47563527	402	1,01	7,70E-03	3' UTR	MSH2,KCNK12
chr4	80165836	80166342	507	1,01	1,65E-02	Distal Intergenic	PRDM8
chr2	176676762	176677116	355	1,00	2,35E-02	Distal Intergenic	LINC01117
chr9	72892924	72893210	287	1,00	7,74E-02	Distal Intergenic	LINC01474
chr2	58367141	58367441	301	1,00	9,74E-02	Distal Intergenic	LINC01122

chr1	234964470	234964881	412	0,99	7,70E-03	Intron	LOC101927851
chr16	66852301	66852691	391	0,98	5,07E-02	Intron	CA7,NAE1
chr7	42051849	42052172	324	0,98	5,07E-02	Intron	GLI3
chr7	130820136	130820609	474	0,97	3,00E-02	Intron	LINC-PINT
chr12	62086978	62087251	274	0,97	7,65E-02	Intron	TAF A2
chr7	43064909	43065335	427	0,97	8,79E-02	Intron	HECW1
chr6	14376812	14377112	301	0,97	9,90E-02	Distal Intergenic	LINC01108
chr5	165869356	165869707	352	0,96	7,65E-02	Distal Intergenic	LINC01947
chr8	123875832	123876300	469	0,95	7,71E-02	Intron	FER1L6
chr14	105055414	105055805	392	0,94	1,13E-02	5' UTR	GPR132
chr4	125364004	125364413	410	0,94	8,79E-02	Intron	FAT4
chr1	152329499	152329989	491	0,92	3,91E-02	Intron	FLG-AS1,FLG
chr2	26517832	26518165	334	0,91	5,87E-02	Intron	OTOF
chr14	78300899	78301296	398	0,91	5,93E-02	Intron	NRXN3
chr14	74760205	74760489	285	0,91	9,68E-02	Promoter	YLPM1
chr3	197065893	197066460	568	0,90	7,74E-02	Intron	DLG1
chr4	17405043	17405424	382	0,89	7,15E-02	Distal Intergenic	SNORA75B
chr2	138584288	138584965	678	0,89	7,65E-02	Distal Intergenic	SPOPL
chr12	131050488	131050816	329	0,88	2,34E-02	Intron	ADGRD1
chr13	48274225	48274634	410	0,87	5,93E-02	Distal Intergenic	RB1,ITM2B
chr16	80123355	80123905	551	0,86	5,07E-02	Intron	MAFTRR
chr3	154343227	154343625	399	0,85	5,61E-02	Intron	GPR149
chr5	125122782	125123235	454	0,84	7,71E-02	Intron	LINC02240
chr17	61402455	61403105	651	0,83	4,43E-02	3' UTR	TBX2-AS1,TBX2
chr20	59755679	59756225	547	0,82	7,74E-02	Intron	PHACTR3
chr10	11920866	11921394	529	0,81	9,23E-02	3' UTR	UPF2
chr8	70140129	70140489	361	0,78	5,93E-02	Intron	NCOA2
chr4	152596881	152597227	347	0,78	6,19E-02	Distal Intergenic	MIR4453
chr21	8464546	8465217	672	0,78	9,55E-02	Distal Intergenic	-
chr1	95060006	95060365	360	0,78	9,84E-02	Intron	ALG14,LOC101928098
chr16	25794953	25795544	592	0,75	8,68E-02	Intron	HS3ST4
chr6	123846716	123847097	382	0,69	6,79E-02	Intron	NKAIN2
chr7	45253163	45253643	481	0,67	7,65E-02	Distal Intergenic	RAMP3
chr20	34742322	34742774	453	0,66	7,71E-02	Exon	NCOA6
chr15	36909528	36910034	507	0,66	9,11E-02	Intron	MEIS2
chr17	39725183	39725612	430	0,61	9,97E-02	3' UTR	ERBB2,MIR4728,MIEN1
chr15	31791857	31792622	766	-0,54	6,79E-02	Intron	OTUD7A
chr15	29384204	29384946	743	-0,55	5,68E-02	Intron	LOC100130111
chr12	59328151	59328750	600	-0,62	4,50E-02	Distal Intergenic	SLC16A7
chr2	113330573	113330968	396	-0,63	4,87E-02	Distal Intergenic	PAX8
chr15	101438573	101439335	763	-0,63	9,97E-02	Intron	PCSK6
chr2	9909349	9909736	388	-0,64	9,65E-02	Intron	TAF1B
chr3	196098723	196100292	1570	-0,66	6,14E-02	Distal Intergenic	TFRC
chr3	13139948	13140350	403	-0,70	9,97E-02	Intron	IQSEC1
chrX	19543250	19543988	739	-0,74	2,34E-02	Intron	SH3KBP1



chr6	99710980	99711683	704	-0,75	5,21E-02	Distal Intergenic	PRDM13
chr8	21564253	21564668	416	-0,75	5,93E-02	Distal Intergenic	GFRA2
chr6	153860938	153861412	475	-0,77	1,51E-02	Distal Intergenic	OPRM1
chr18	11430292	11430865	574	-0,77	7,15E-02	Distal Intergenic	LINC01928
chrX	32357519	32358011	493	-0,77	7,71E-02	Intron	DMD
chr4	113983355	113983699	345	-0,78	9,68E-02	Distal Intergenic	ARSJ
chr6	38397668	38398082	415	-0,79	6,85E-02	Intron	BTBD9
chr20	40591720	40592100	381	-0,83	4,05E-02	Distal Intergenic	MAFB
chr11	8309097	8309445	349	-0,85	9,75E-02	Distal Intergenic	LMO1
chr8	29048909	29049484	576	-0,87	4,50E-02	3' UTR	HMBOX1
chr3	169667729	169668083	355	-0,87	6,67E-02	Distal Intergenic	MECOM
chr12	123891374	123891655	282	-0,88	6,37E-02	Intron	ZNF664
chrX	50185734	50186096	363	-0,89	4,55E-02	Distal Intergenic	AKAP4
chrX	132206020	132206380	361	-0,89	7,65E-02	Intron	RAP2C
chrX	7189691	7190082	392	-0,90	7,65E-02	Distal Intergenic	STS
chrX	101136018	101136420	403	-0,91	1,13E-02	Intron	CENPI
chrX	55069701	55070130	430	-0,91	7,15E-02	Distal Intergenic	PAGE2B
chrX	121681653	121682540	888	-0,92	4,80E-02	Distal Intergenic	MIR3672
chrX	18076768	18077182	415	-0,93	3,00E-02	Intron	LINC01456
chr16	69755715	69756075	361	-0,93	8,28E-02	Promoter	NOB1
chrX	150808754	150809078	325	-0,93	9,65E-02	Intron	CD99L2
chrX	22665040	22665413	374	-0,94	5,21E-02	Intron	PTCHD1-AS
chr12	68406085	68406642	558	-0,95	5,07E-02	Intron	LINC02384
chr7	72006797	72007150	354	-0,95	6,67E-02	Intron	CALN1
chrX	153415777	153416124	348	-0,95	6,96E-02	Promoter	ZFP92
chrX	93991247	93991572	326	-0,95	7,71E-02	Distal Intergenic	FAM133A
chrX	15685167	15685568	402	-0,95	7,88E-02	Intron	CA5BP1,CA5B
chrX	63959775	63960115	341	-0,95	9,33E-02	Distal Intergenic	ARHGEF9
chr22	35351420	35351749	330	-0,96	4,50E-02	Distal Intergenic	MIR6069,TOM1
chr8	77712716	77713039	324	-0,96	9,97E-02	Distal Intergenic	LOC102724874
chrX	9672381	9672868	488	-0,97	1,04E-02	Intron	TBL1X
chr15	34423023	34423365	343	-0,99	7,40E-03	Intron	MIR1233-2,GOLGA8A
chr18	76618556	76618929	374	-1,00	4,05E-02	Intron	LINC00683,LINC01927
chrX	138336585	138336959	375	-1,02	7,74E-02	Distal Intergenic	MIR504
chr3	39480691	39481132	442	-1,02	8,49E-02	Intron	MOBP
chr8	104348090	104348464	375	-1,03	7,40E-03	Intron	DPYS,DCSTAMP
chr13	109314084	109314469	386	-1,03	5,68E-02	Distal Intergenic	LINC00399
chr14	23925296	23925783	488	-1,03	5,69E-02	Intron	DHRS4
chrX	89762472	89762789	318	-1,04	6,37E-02	Distal Intergenic	TGIF2LX
chr19	30742950	30743417	468	-1,05	4,80E-02	Distal Intergenic	LINC01791
chr8	58401934	58402286	353	-1,05	5,07E-02	Distal Intergenic	UBXN2B
chr11	115562907	115563271	365	-1,07	1,41E-02	Distal Intergenic	CADM1
chrX	125801234	125801545	312	-1,08	4,50E-02	Distal Intergenic	LOC101928495
chrX	54245326	54245732	407	-1,08	6,85E-02	Intron	WNK3
chrX	13050487	13050922	436	-1,11	7,38E-03	Distal Intergenic	FAM9C

chrX	17812564	17812970	407	-1,12	2,50E-02	Intron	RAI2
chrX	67106461	67106783	323	-1,12	3,00E-02	Distal Intergenic	AR
chr11	105460681	105461081	401	-1,15	7,38E-03	Intron	CARD18
chrX	15529210	15529517	308	-1,17	1,51E-02	Intron	BMX
chr6	113752552	113752955	404	-1,18	6,67E-02	Distal Intergenic	LINC02541
chrX	74292249	74292667	419	-1,18	8,68E-02	Promoter	FTX,MIR374A
chrX	64248528	64248888	361	-1,19	7,74E-02	Distal Intergenic	ASB12
chr7	68650297	68650619	323	-1,20	5,07E-02	Distal Intergenic	LOC102723427
chr4	135169415	135170242	828	-1,22	7,38E-03	Distal Intergenic	LINC02485
chr3	26242309	26242695	387	-1,22	7,38E-03	Distal Intergenic	LINC00692
chr10	490113	490516	404	-1,22	8,79E-02	Intron	DIP2C
chrX	85929139	85929538	400	-1,26	1,82E-03	Intron	CHM
chr10	44662615	44663049	435	-1,27	6,93E-02	Distal Intergenic	TMEM72
chrX	124465548	124465914	367	-1,28	7,38E-03	Intron	TENM1
chr8	12484419	12484956	538	-1,29	7,38E-03	Intron	LOC729732
chr9	42740753	42741167	415	-1,39	7,65E-02	Distal Intergenic	LOC101927827
chrX	113447866	113448169	304	-1,41	6,79E-02	Distal Intergenic	AMOT
chrX	29379691	29380061	371	-1,42	1,46E-02	Intron	IL1RAPL1
chr15	21282529	21282914	386	-1,45	8,68E-02	Distal Intergenic	MIR3118-3,POTEB,MIR5701-3
chr4	60572610	60572978	369	-1,46	7,71E-02	Distal Intergenic	MIR548AG1
chr20	47832388	47832833	446	-1,53	7,71E-02	Distal Intergenic	SULF2
chr1	161458425	161459908	1484	-1,78	7,38E-03	Intron	FCGR2A
chr10	45732890	45733196	307	-1,79	2,35E-02	Intron	WASHC2C
chr17	46396140	46397322	1183	-1,93	7,15E-02	Intron	MIR4315-2
chrX	149731633	149732076	444	-1,95	5,19E-02	Distal Intergenic	MAGEA11
chr3	159681719	159682162	444	-1,96	3,01E-02	Intron	IQCJ-SCHIP1,SCHIP1
chr22	11837417	11837952	536	-2,03	9,68E-02	Distal Intergenic	FRG1FP
chr13	20119461	20119837	377	-2,07	4,50E-02	Distal Intergenic	LINC01072
chr1	25406068	25406495	428	-2,25	7,38E-03	Intron	RHCE
chr9	42600548	42600962	415	-2,46	7,38E-03	Distal Intergenic	LOC101927827
chr17	83232087	83232489	403	-3,02	7,40E-03	Intron	RPL23AP87
chr11	130438	131057	620	-3,40	7,70E-03	Exon	LINC01001
chr14	106757811	106758265	455	-4,35	7,38E-03	Distal Intergenic	MIR5195
chr1	228557690	228558459	770	-4,76	7,70E-03	Exon	BTNL10

#### DiffBind narrow window

Chr	start	end	width	log2fold	adj. p-value	annotation	associated genes
chr16	953843	953893	51	5,69	2,77E-05	Intron	LMF1
chr1	25292695	25292745	51	3,42	2,77E-05	Intron	RSRP1,RHD
chr1	25323341	25323391	51	3,19	1,13E-02	Intron	RSRP1,RHD
chr9	61944687	61944737	51	2,86	1,79E-03	Intron	FAM27C
chr21	13368336	13368386	51	2,86	1,21E-02	Distal Intergenic	-

chr15	30182939	30182989	51	2,53	4,51E-05	Distal Intergenic	LINC02249
chr15	48530201	48530251	51	2,47	1,55E-03	Intron	FBN1
chr3	128694830	128694880	51	2,40	1,13E-02	Distal Intergenic	RPN1
chr9	61867665	61867715	51	2,33	6,03E-02	Distal Intergenic	FAM27C
chr2	240680899	240680949	51	2,32	4,10E-02	Promoter	AQP12B
chr11	70345473	70345523	51	2,25	8,62E-02	Intron	PPFIA1
chr20	63234294	63234344	51	2,00	3,63E-02	Promoter	BIRC7,MIR3196
chr16	88501484	88501534	51	1,93	8,21E-02	Intron	ZFPM1
chr4	37585212	37585262	51	1,90	8,71E-02	Intron	C4orf19
chr4	120254207	120254257	51	1,79	5,20E-02	Intron	MAD2L1
chr21	8449677	8449727	51	1,71	5,20E-02	Distal Intergenic	FP236383.3-202
chr10	46860760	46860810	51	1,58	9,57E-02	Distal Intergenic	FRMPD2B
chr7	3299406	3299456	51	1,57	2,00E-02	Promoter	SDK1
chr4	119835902	119835952	51	1,56	5,07E-02	Distal Intergenic	LINC01365
chr3	103896484	103896534	51	1,55	7,49E-02	Distal Intergenic	MIR548AB
chr10	30328831	30328881	51	1,54	1,55E-03	Intron	MTPAP
chr8	109763044	109763094	51	1,52	3,63E-03	Distal Intergenic	SYBU
chr16	23748999	23749049	51	1,51	8,74E-02	Distal Intergenic	CHP2
chr12	64483999	64484049	51	1,49	1,71E-02	Exon	TBK1
chr5	26640171	26640221	51	1,48	8,06E-02	Distal Intergenic	CDH9
chr14	53150027	53150077	51	1,45	3,40E-02	5' UTR	DDHD1,LOC101927620
chr2	128921387	128921437	51	1,45	7,88E-02	Distal Intergenic	LINC01854
chr1	69099263	69099313	51	1,44	3,51E-02	Intron	LINC01707
chr5	89033162	89033212	51	1,43	7,67E-02	Intron	MEF2C-AS1
chr10	44613339	44613389	51	1,42	5,75E-02	Distal Intergenic	CXCL12
chr12	89438411	89438461	51	1,41	8,51E-02	Intron	POC1B
chr16	18286711	18286761	51	1,40	5,07E-02	Distal Intergenic	MIR6770-2
chr4	127548324	127548374	51	1,39	2,36E-02	Distal Intergenic	INTU
chr21	9666813	9666863	51	1,37	6,03E-02	Distal Intergenic	AC124864.2-201
chr4	80166018	80166068	51	1,37	8,21E-02	Distal Intergenic	PRDM8
chr5	157200085	157200135	51	1,35	2,23E-02	Intron	ITK
chr14	54439464	54439514	51	1,34	5,09E-02	Promoter	CNIH1
chr2	229208785	229208835	51	1,33	8,51E-02	Intron	PID1
chr8	37143004	37143054	51	1,30	8,51E-02	Distal Intergenic	KCNU1
chr1	58773156	58773206	51	1,29	5,22E-02	Distal Intergenic	JUN
chr7	109161739	109161789	51	1,26	9,57E-02	Distal Intergenic	C7orf66
chr11	109294678	109294728	51	1,25	8,71E-02	Distal Intergenic	C11orf87
chr1	80330845	80330895	51	1,25	9,32E-02	Distal Intergenic	LINC01781
chr15	94013994	94014044	51	1,25	9,85E-02	Intron	LINC01581,LINC01579
chr9	62039317	62039367	51	1,24	1,36E-02	Intron	FAM27C
chr6	28237372	28237422	51	1,23	3,40E-02	Distal Intergenic	ZSCAN9
chr20	56560762	56560812	51	1,23	7,13E-02	Distal Intergenic	LINC01716
chr8	117867342	117867392	51	1,23	7,65E-02	Intron	EXT1
chr11	113213998	113214048	51	1,20	4,69E-02	Intron	NCAM1
chr5	15454727	15454777	51	1,20	6,03E-02	Distal Intergenic	FBXL7

chr3	101839985	101840035	51	1,20	8,51E-02	Intron	NFKBIZ
chr2	39005876	39005926	51	1,19	5,20E-02	Intron	SOS1
chr9	1356734	1356784	51	1,19	5,20E-02	Distal Intergenic	DMRT2
chr5	165869569	165869619	51	1,17	4,24E-02	Distal Intergenic	LINC01947
chr13	36870392	36870442	51	1,17	8,33E-02	Intron	SMAD9
chr20	23316654	23316704	51	1,16	7,88E-02	Distal Intergenic	NXT1
chr16	66852529	66852579	51	1,16	8,51E-02	Intron	CA7,NAE1
chr12	26209786	26209836	51	1,15	6,51E-02	Intron	SSPN
chr12	12439761	12439811	51	1,15	8,91E-02	Intron	BORCS5
chr17	4540857	4540907	51	1,14	4,69E-02	Intron	MYBBP1A,SPNS2
chr6	14376962	14377012	51	1,12	4,77E-02	Distal Intergenic	LINC01108
chr14	99637138	99637188	51	1,08	1,13E-02	Distal Intergenic	HHIPL1
chr5	10132486	10132536	51	1,08	4,77E-02	Distal Intergenic	CCT5
chr10	61487853	61487903	51	1,07	2,36E-02	Distal Intergenic	TMEM26
chr1	152329703	152329753	51	1,07	5,20E-02	Intron	FLG-AS1,FLG
chr13	73209578	73209628	51	1,06	6,83E-02	Distal Intergenic	KLF5
chr1	12369197	12369247	51	1,06	7,29E-02	Intron	VPS13D
chr9	118140848	118140898	51	1,05	6,71E-02	Distal Intergenic	TLR4
chr11	87967848	87967898	51	1,05	9,32E-02	Intron	RAB38
chr10	109968603	109968653	51	1,04	4,96E-02	Intron	ADD3-AS1
chr7	42051973	42052023	51	1,04	5,20E-02	Intron	GLI3
chr18	3726434	3726484	51	1,03	1,61E-02	Intron	DLGAP1
chr2	176676925	176676975	51	1,01	4,27E-02	Distal Intergenic	LINC01116
chr11	94974765	94974815	51	1,01	9,91E-02	Promoter	KDM4D,CWC15
chr1	2325192	2325242	51	1,00	6,46E-02	Intron	MORN1
chr19	36121176	36121226	51	1,00	7,29E-02	Intron	TBCB
chr11	44061422	44061472	51	1,00	8,91E-02	Distal Intergenic	ACCS,ACCSL
chr1	243721055	243721105	51	0,99	8,51E-02	Intron	LOC339529
chr10	11920938	11920988	51	0,99	8,51E-02	3' UTR	UPF2
chr3	162717680	162717730	51	0,98	2,36E-02	Distal Intergenic	LINC01192
chr11	78451538	78451588	51	0,98	7,29E-02	Intron	NARS2
chr12	131050659	131050709	51	0,97	4,76E-02	Intron	ADGRD1
chr2	225212517	225212567	51	0,97	7,88E-02	Distal Intergenic	DOCK10
chr2	82820655	82820705	51	0,95	5,20E-02	Distal Intergenic	DHFRP3
chr14	105055545	105055595	51	0,94	4,65E-02	5' UTR	GPR132
chr1	95060117	95060167	51	0,94	4,99E-02	Intron	ALG14,LOC101928098
chr2	26517899	26517949	51	0,94	7,90E-02	Intron	OTOF
chr18	43085006	43085056	51	0,94	8,51E-02	Intron	RIT2
chr3	147397863	147397913	51	0,92	8,51E-02	Intron	LOC440982,ZIC1,ZIC4
chr10	91426572	91426622	51	0,91	9,54E-02	Intron	HECTD2
chr12	63539369	63539419	51	0,91	9,85E-02	Distal Intergenic	DPY19L2
chr1	234964627	234964677	51	0,90	6,81E-02	Intron	LOC101927851
chr10	65226781	65226831	51	0,89	7,65E-02	Distal Intergenic	LINC02671
chr3	154343440	154343490	51	0,88	9,85E-02	Intron	GPR149
chr2	95201133	95201183	51	0,81	4,77E-02	Distal Intergenic	ZNF2

chr6	34164970	34165020	51	0,81	7,36E-02	Distal Intergenic	GRM4
chr19	15532240	15532290	51	0,57	8,51E-02	Intron	CYP4F22
chr2	113330678	113330728	51	-0,69	8,33E-02	Distal Intergenic	PAX8
chr20	40591922	40591972	51	-0,83	7,88E-02	Distal Intergenic	MAFB
chrX	132206187	132206237	51	-0,86	9,78E-02	Intron	RAP2C
chr15	75783091	75783141	51	-0,89	3,50E-02	Exon	MIR4313
chrX	54415623	54415673	51	-0,89	5,20E-02	Distal Intergenic	TSR2
chr12	448691	448741	51	-0,89	9,32E-02	Distal Intergenic	B4GALNT3
chr12	123891529	123891579	51	-0,94	8,21E-02	Intron	ZNF664
chr8	104348301	104348351	51	-0,95	6,51E-02	Intron	DPYS,DCSTAMP
chrX	138975718	138975768	51	-0,95	7,88E-02	Intron	FGF13
chrX	6922993	6923043	51	-0,96	4,65E-02	Distal Intergenic	MIR4767
chr12	69032768	69032818	51	-0,96	9,21E-02	Distal Intergenic	CPM
chr1	11524600	11524650	51	-0,98	3,50E-02	Intron	DISP3
chr3	169667911	169667961	51	-0,99	7,67E-02	Distal Intergenic	MECOM
chrX	18076951	18077001	51	-1,00	6,46E-02	Intron	LINC01456
chr15	34423114	34423164	51	-1,00	7,67E-02	Intron	MIR1233-2,GOLGA8A
chrX	22665163	22665213	51	-1,02	8,91E-02	Intron	PTCHD1-AS
chrX	118513003	118513053	51	-1,02	9,32E-02	Intron	DOCK11
chrX	101136231	101136281	51	-1,03	3,69E-02	Intron	CENPI
chr22	35351526	35351576	51	-1,04	4,25E-02	Distal Intergenic	MIR6069,TOM1
chrX	151081257	151081307	51	-1,04	7,14E-02	Distal Intergenic	MIR4330
chrX	125801410	125801460	51	-1,05	9,23E-02	Distal Intergenic	LOC101928495
chr12	3368257	3368307	51	-1,06	2,24E-02	Promoter	LINC02417,LOC100128253
chr8	77712792	77712842	51	-1,07	9,54E-02	Distal Intergenic	LOC102724874
chrX	11192104	11192154	51	-1,08	6,03E-02	Intron	ARHGAP6
chr16	83659153	83659203	51	-1,09	4,76E-02	Intron	CDH13
chr6	14299541	14299591	51	-1,09	9,57E-02	Distal Intergenic	LINC01108
chrX	67106557	67106607	51	-1,10	3,69E-02	Distal Intergenic	AR
chrX	150808930	150808980	51	-1,10	6,03E-02	Intron	CD99L2
chr3	26623928	26623978	51	-1,11	7,14E-02	Promoter	LRRC3B
chr18	76618747	76618797	51	-1,12	2,33E-02	Intron	LINC00683,LINC01927
chr11	115563097	115563147	51	-1,12	7,70E-02	Distal Intergenic	CADM1
chrX	6945991	6946041	51	-1,14	6,03E-02	Distal Intergenic	MIR4767
chr6	99095971	99096021	51	-1,14	7,36E-02	Distal Intergenic	MIR548AI
chrX	55069834	55069884	51	-1,15	7,14E-02	Distal Intergenic	PAGE2B
chr1	37311910	37311960	51	-1,17	7,88E-02	Intron	MIR4255
chr2	140429152	140429202	51	-1,18	8,21E-02	Intron	LRP1B
chr5	153673200	153673250	51	-1,19	2,90E-02	Intron	GRIA1
chrX	152158838	152158888	51	-1,20	1,60E-02	Intron	MAGEA10
chr5	38060772	38060822	51	-1,22	9,36E-02	Intron	LINC02107
chrX	71541523	71541573	51	-1,24	1,79E-02	Intron	OGT
chr1	109256111	109256161	51	-1,24	2,36E-02	Intron	CELSR2
chr4	184113844	184113894	51	-1,25	3,40E-02	Intron	ENPP6
chr12	54945528	54945578	51	-1,25	3,40E-02	Distal Intergenic	TESPA1

chrX	85929243	85929293	51	-1,28	1,13E-02	Intron	CHM
chrX	89762645	89762695	51	-1,28	2,24E-02	Distal Intergenic	TGIF2LX
chrX	53882483	53882533	51	-1,28	7,88E-02	Distal Intergenic	PHF8
chrX	124465657	124465707	51	-1,29	3,18E-02	Intron	TENM1
chrX	151248678	151248728	51	-1,32	3,40E-02	Distal Intergenic	GPR50-AS1
chrX	16229890	16229940	51	-1,33	6,66E-02	Distal Intergenic	MAGEB17
chr17	52837101	52837151	51	-1,34	2,29E-02	Distal Intergenic	MIR4315-2
chr8	59459615	59459665	51	-1,34	6,03E-02	Distal Intergenic	TOX
chrX	6733191	6733241	51	-1,34	8,09E-02	Distal Intergenic	VCX3A
chr7	153925447	153925497	51	-1,36	7,14E-02	Intron	DPP6
chr7	71093710	71093760	51	-1,37	1,13E-02	Distal Intergenic	GALNT17
chr7	68650369	68650419	51	-1,40	4,10E-02	Distal Intergenic	LOC102723427
chr8	58402076	58402126	51	-1,40	5,20E-02	Distal Intergenic	UBXN2B
chrX	15220693	15220743	51	-1,40	6,51E-02	Distal Intergenic	ASB9
chr21	42258091	42258141	51	-1,40	8,91E-02	Intron	ABCG1
chr2	1706584	1706634	51	-1,40	9,88E-02	Intron	PXDN
chr11	105460895	105460945	51	-1,41	8,40E-03	Intron	CARD18
chr13	60803287	60803337	51	-1,42	8,41E-02	Distal Intergenic	LINC00378
chr3	26242510	26242560	51	-1,43	8,40E-03	Distal Intergenic	LINC00692
chr8	12484674	12484724	51	-1,43	3,03E-02	Intron	LOC729732
chr18	33067535	33067585	51	-1,45	7,14E-02	Intron	CCDC178
chrX	29379913	29379963	51	-1,47	9,32E-02	Intron	IL1RAPL1
chr4	60572869	60572919	51	-1,51	7,65E-02	Distal Intergenic	MIR548AG1
chr4	135170099	135170149	51	-1,52	8,51E-02	Distal Intergenic	LINC02485
chr22	42072946	42072996	51	-1,53	2,48E-02	Promoter	PHETA2,NAGA
chrX	42915747	42915797	51	-1,54	8,74E-02	Distal Intergenic	PPP1R2C
chr8	101985976	101986026	51	-1,56	1,79E-02	Intron	NCALD
chr15	74702200	74702250	51	-1,56	9,67E-02	Distal Intergenic	EDC3
chr22	40185897	40185947	51	-1,62	1,60E-02	Intron	TNRC6B
chr7	154662123	154662173	51	-1,71	1,61E-02	Intron	DPP6
chr8	128316307	128316357	51	-1,71	4,69E-02	Distal Intergenic	MIR1208
chr20	47832617	47832667	51	-1,73	3,15E-02	Distal Intergenic	SULF2
chr12	4758443	4758493	51	-1,76	8,39E-03	Intron	GALNT8,NDUFA9
chr1	161459262	161459312	51	-1,84	1,13E-02	Intron	FCGR2A
chr8	3323938	3323988	51	-1,85	2,36E-02	Intron	CSMD1
chr4	146113657	146113707	51	-1,94	3,40E-02	Exon	LINC01095
chr17	40892676	40892726	51	-1,95	1,36E-02	Distal Intergenic	KRT10
chr16	54095151	54095201	51	-2,00	7,88E-02	Intron	FTO
chr10	45732942	45732992	51	-2,05	1,60E-02	Intron	WASHC2C
chr15	52254525	52254575	51	-2,11	3,18E-02	Intron	MYO5C
chr13	20119566	20119616	51	-2,19	5,46E-03	Distal Intergenic	LINC01072
chr2	236254404	236254454	51	-2,24	8,09E-02	Intron	ASB18
chr1	25406267	25406317	51	-2,31	3,22E-04	Intron	RHCE
chr4	189836541	189836591	51	-2,62	8,51E-02	Intron	DBET
chr17	83232374	83232424	51	-2,71	6,03E-02	Intron	RPL23AP87

chr14	106757931	106757981	51	-3,93	1,13E-02	Distal Intergenic	MIR5195
-------	-----------	-----------	----	-------	----------	-------------------	---------

**Supplementary Table S2.** Primers used in the RT-PCR analysis.

Gene	Primers	Annealing temperature (°C)
<i>TET1</i>	F: 5'AAATGTTGCCCGAGAATGTC3' R: 5'TGTTGTGAATGTCCCTGTGG3'	56
<i>TET2</i>	F: 5'GAAGGAATCCCGCTGTCTC3' R: 5'ACAGGCGCAAGTTCTCTCTT3'	56
<i>TET3</i>	F: 5'CTGGAGCATGTACTIONCAACG3' R: 5'5'ACGGCAGTCAATCGCTATTTTC3'	56
<i>CHM</i>	F: 5'GAAATGATAATGCAGTCAAACAGG3' R: 5'GTGGAGGGGGACAGAAATC3'	60
<i>MTPAP</i>	F: 5'ACGATTTTCACTATAGCCCACT3' R: 5'GCTAATTCTCAAATTTTCTAAAGATGG3'	60
<i>TMEM50A</i>	F: 5'AGACCAGCACGGTCAACTAGA3' R: 5'TTCTGAAGAGGAAGAGACAACAAG3'	61
<i>RSRP1</i>	F: 5'TTGACTTGCCAGCTAGTCTCAG3' R: 5'TTCTGTTACCTTTTCCGACAGTT3'	60
<i>TBP</i>	F: 5'ACTCCACTGTATCCCTCCC3' R: 5'TATATTCGGCGTTTCGGGCA3'	60

F: forward. R: reverse.