

Supplementary data

**The Chick Chorioallantoic
membrane model: a new *in vivo*
tool to evaluate cancer stem cell
activity**

Supplementary Figure 1. CAM and mice xenographs images at lower magnification (10x)

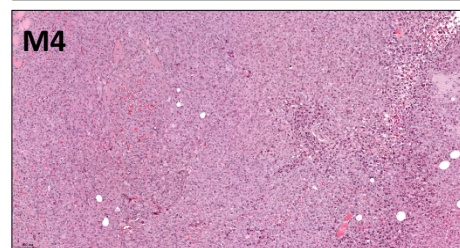
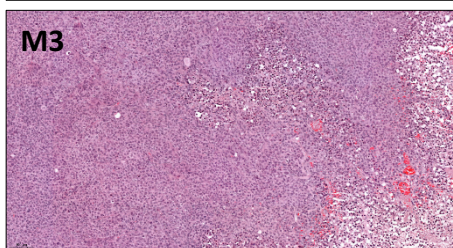
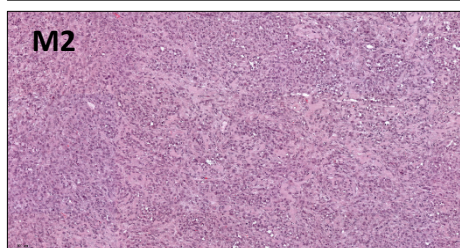
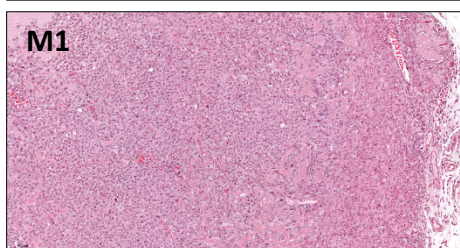
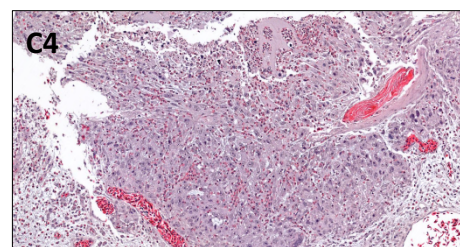
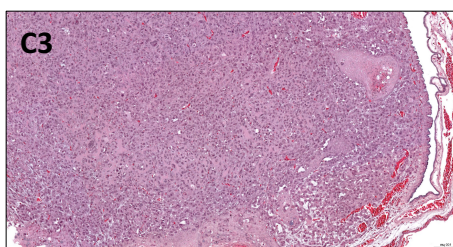
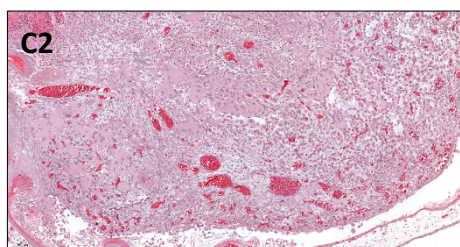
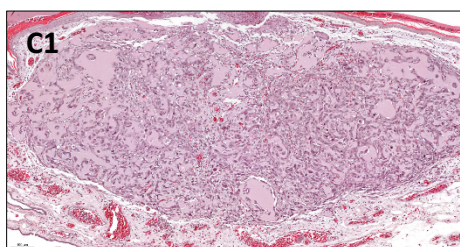
231

231.LM2

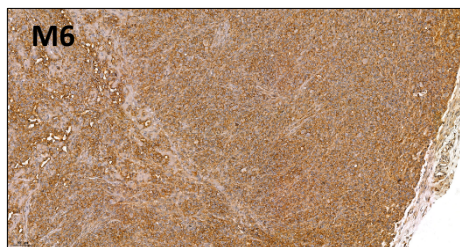
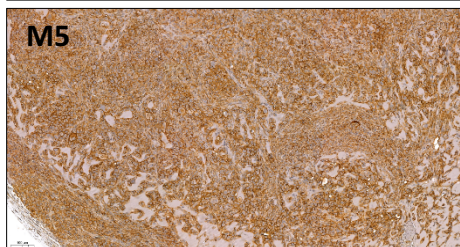
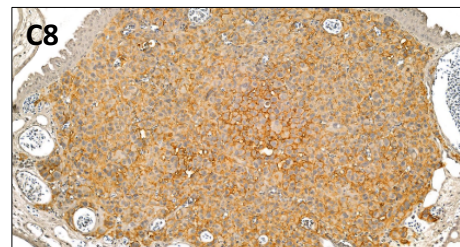
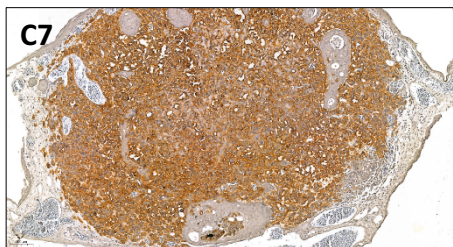
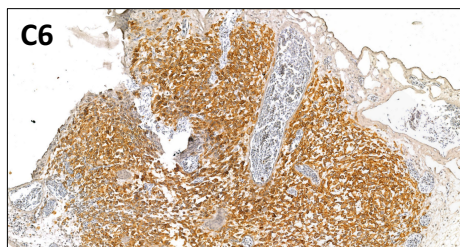
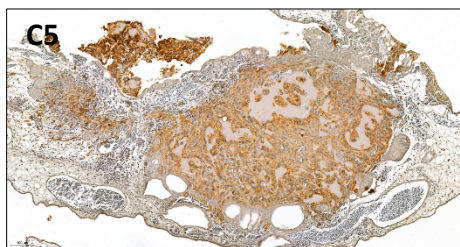
231.BoM

231.BRMS

Mice - H&E - CAM



Mice - CD44 - CAM



Mice - CD49f - CAM

