

Figure S1. GC-MS chromatogram of studied fraction after the silylation process.

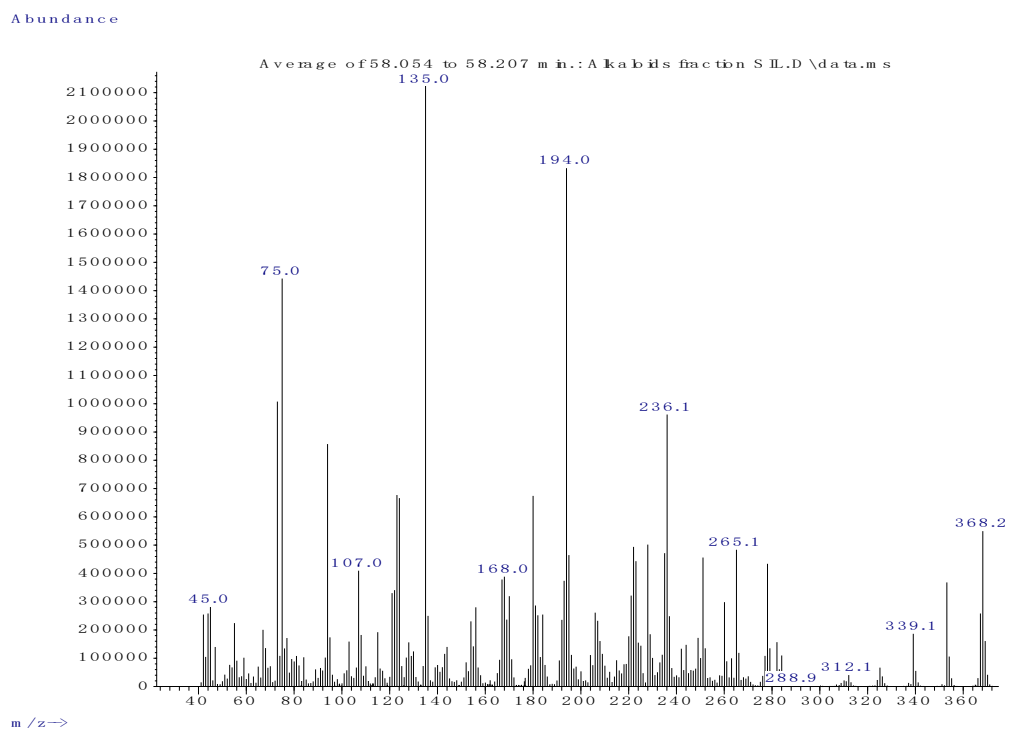


Figure S2. Mass spectrum of silylated geissospermiclatine (Rt = 58.124 min.) from GC-MS analysis.

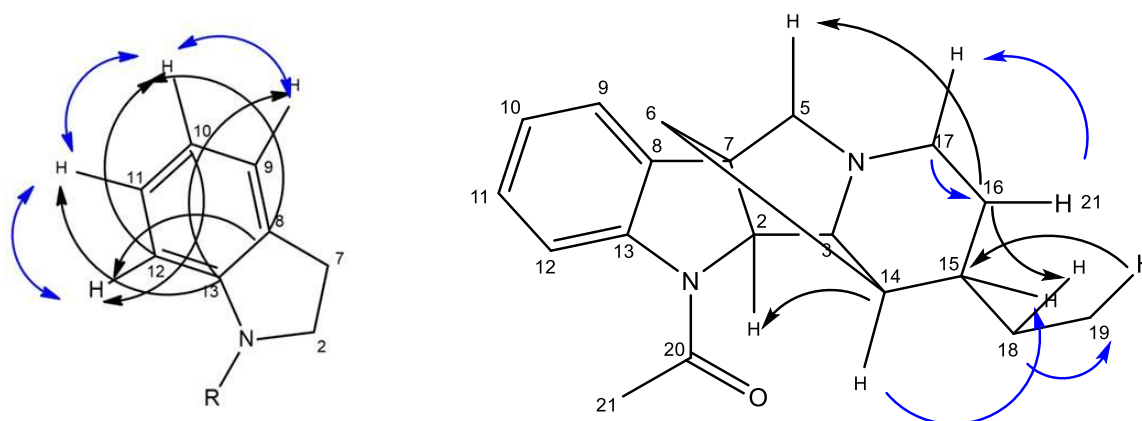


Figure S3. Important HMBC (in black) and COSY (in blue) correlations of 4.

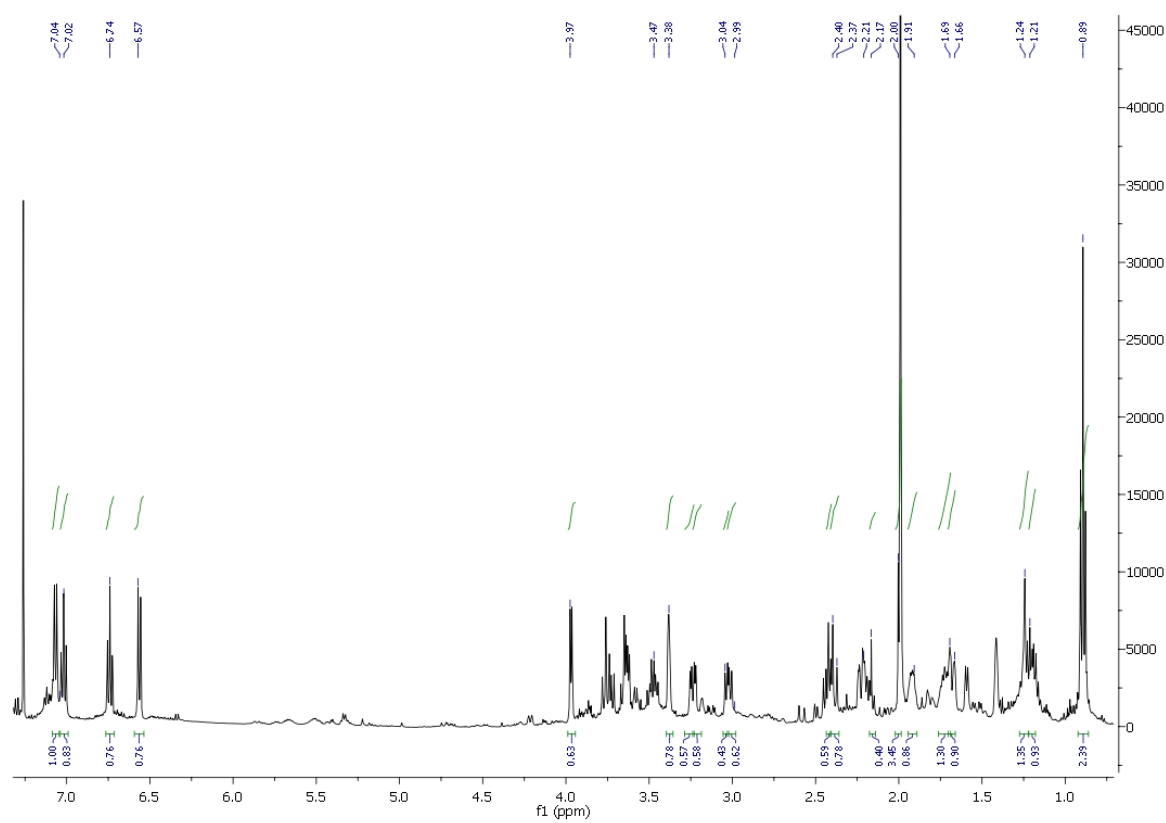


Figure S4. ^1H NMR spectrum of geissospermiclatine.

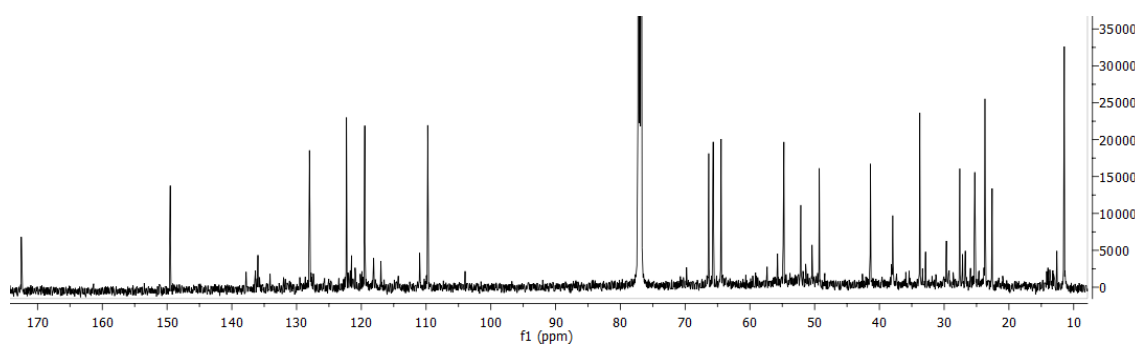


Figure S5. ^{13}C NMR spectrum of geissospermiclatine.

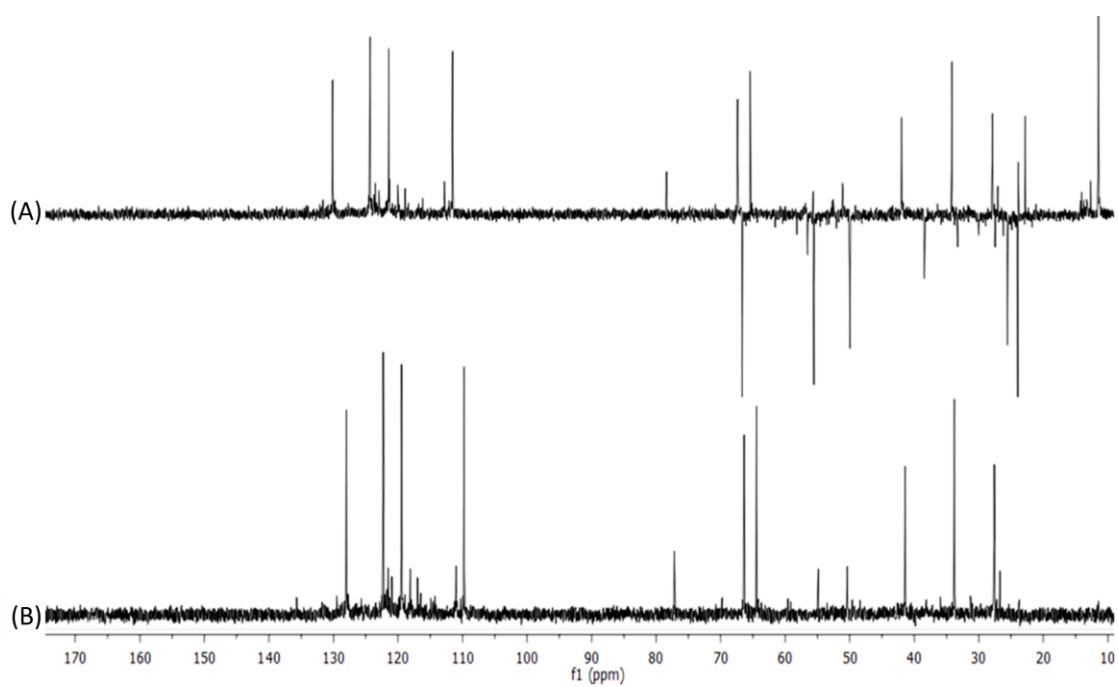


Figure S6. DEPT-135 (A) and DEPT-90 (B) NMR spectra of geissospermiculate.

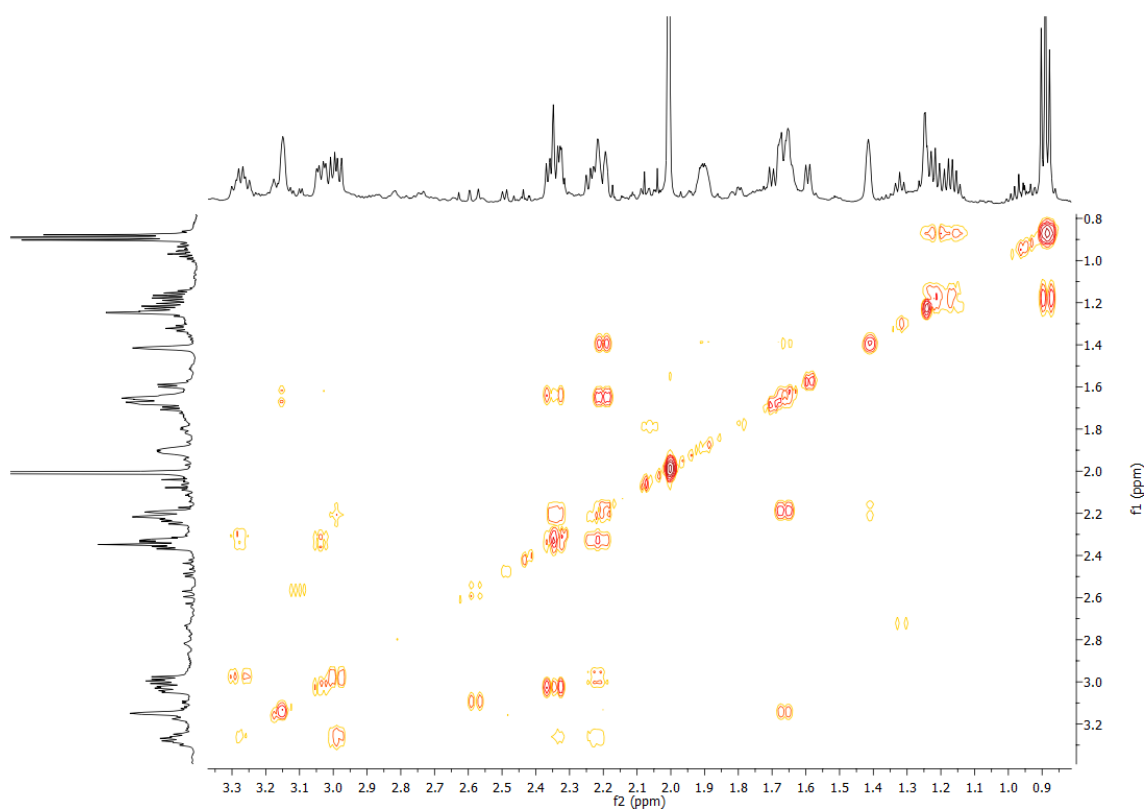


Figure S7. COSY spectrum of geissospermiculate.

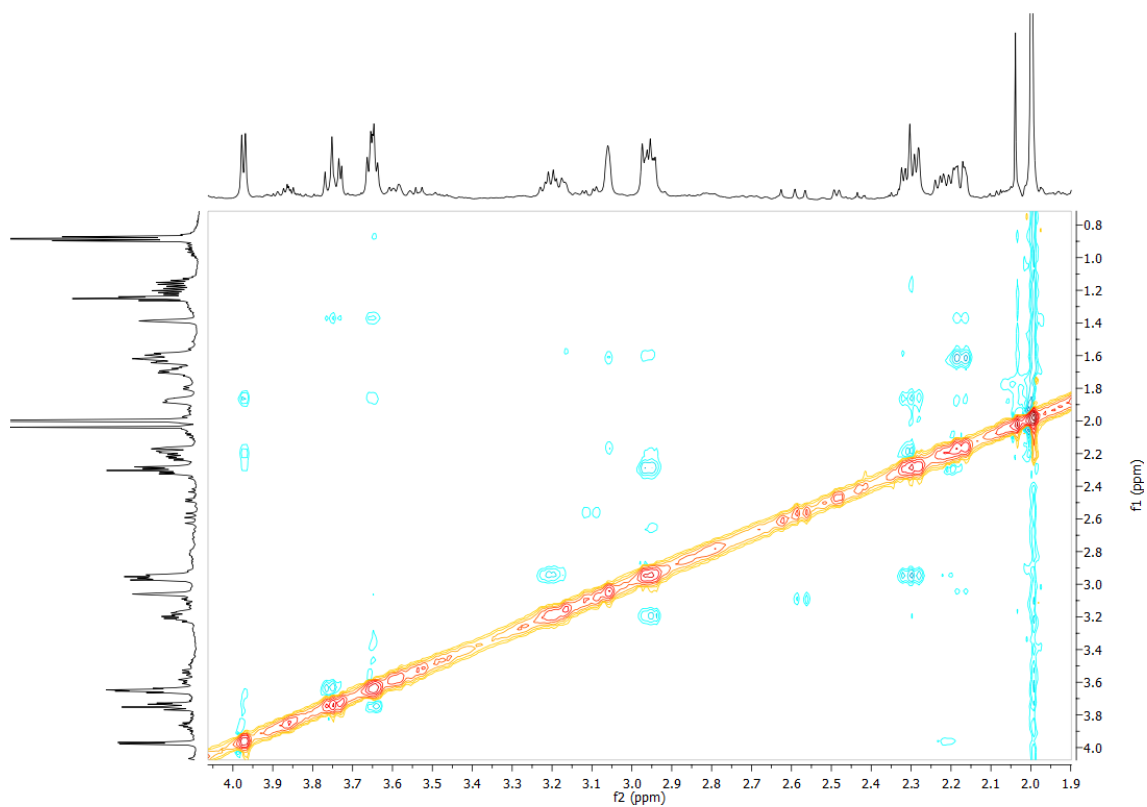


Figure S8. ROESY spectrum of geissospermiclatine.

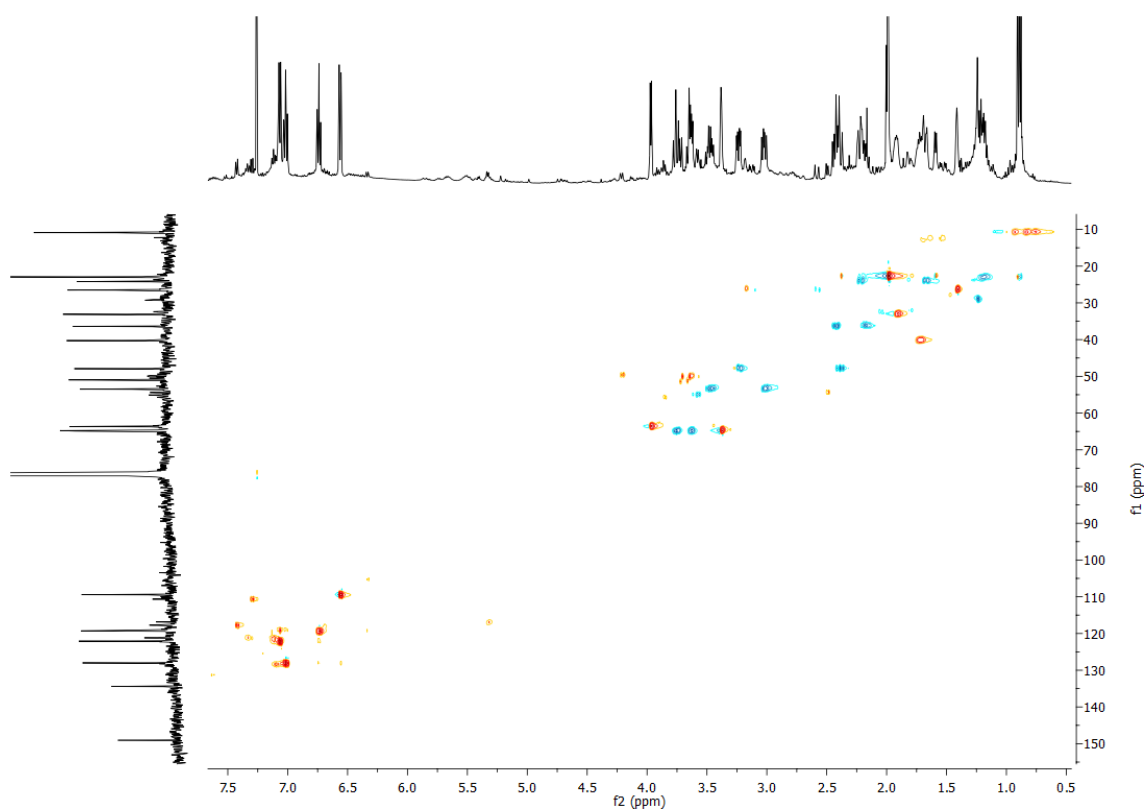


Figure S9. HSQC spectrum of geissospermiclatine.

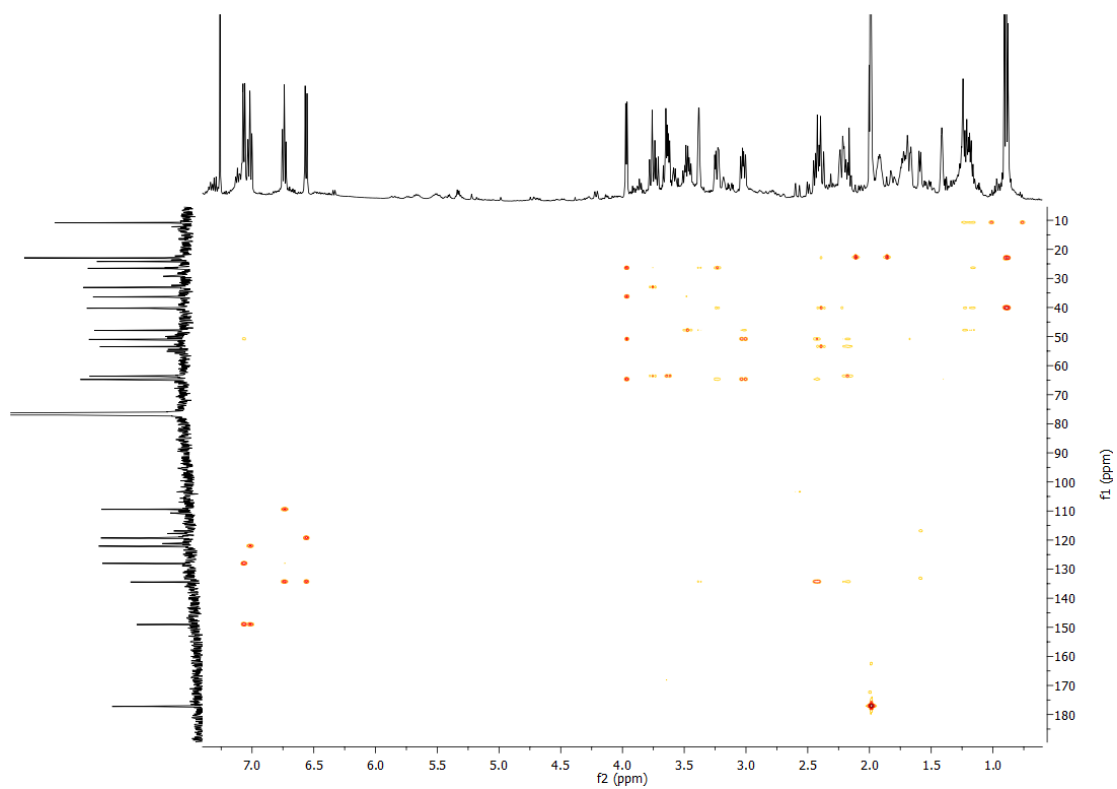
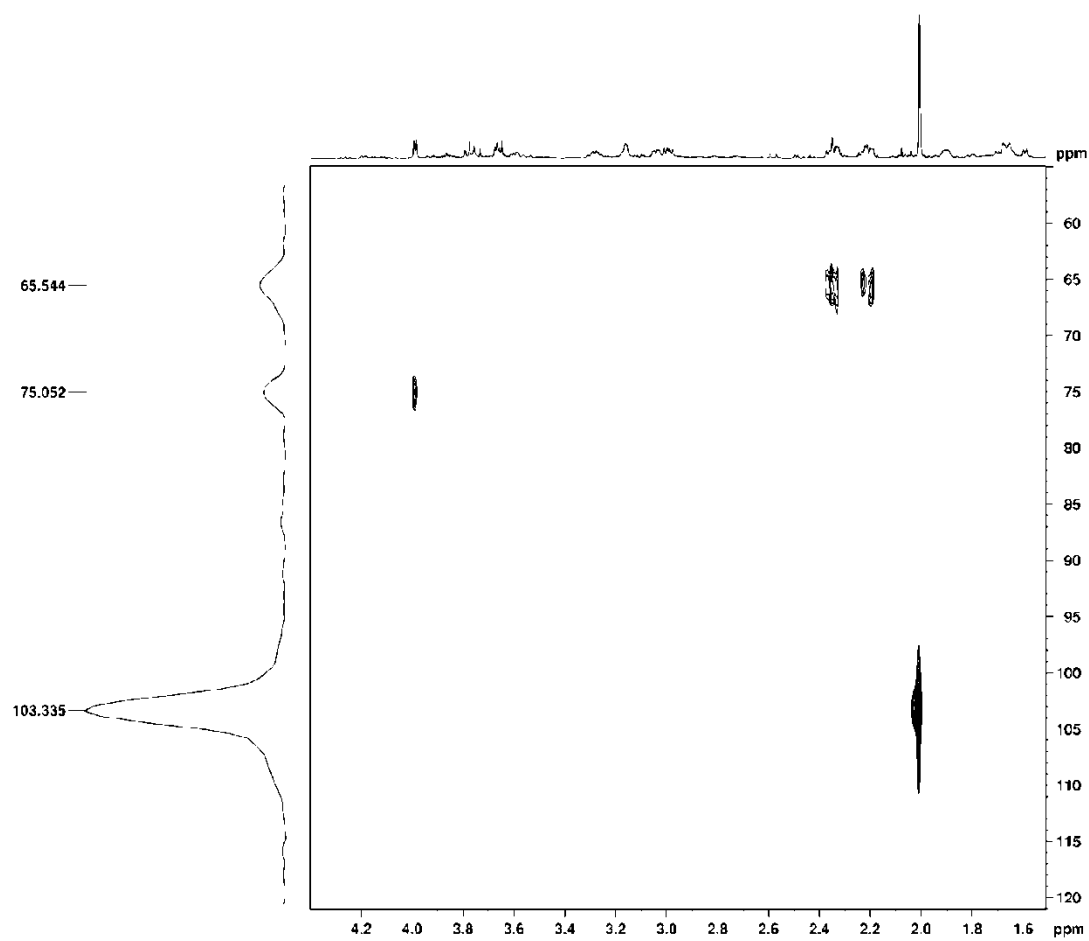


Figure S10. HMBC spectrum of geissospermiculate.

Figure S11. ^1H - ^{15}N HMBC spectrum of geissospermiculate.