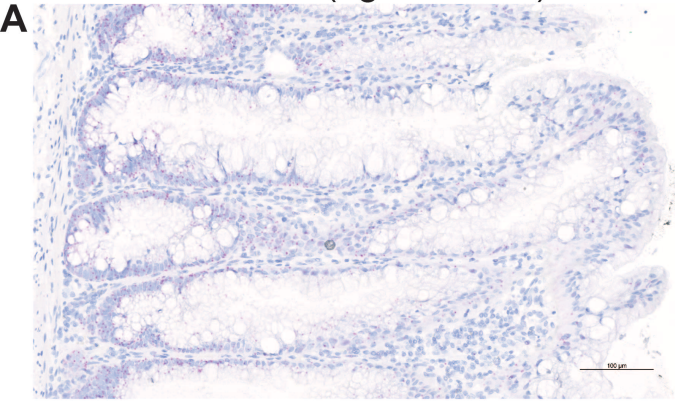
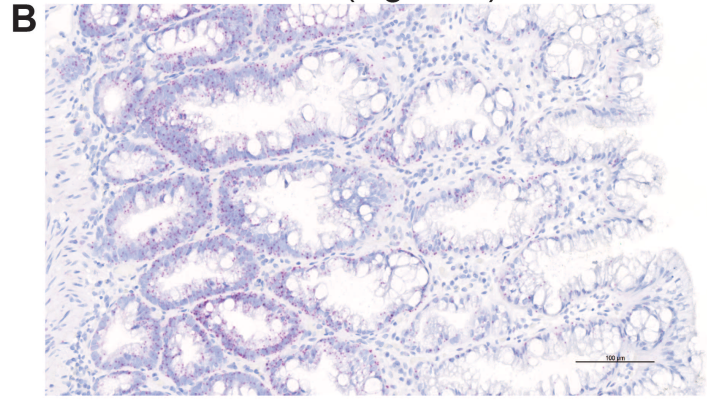


**HOXB13**

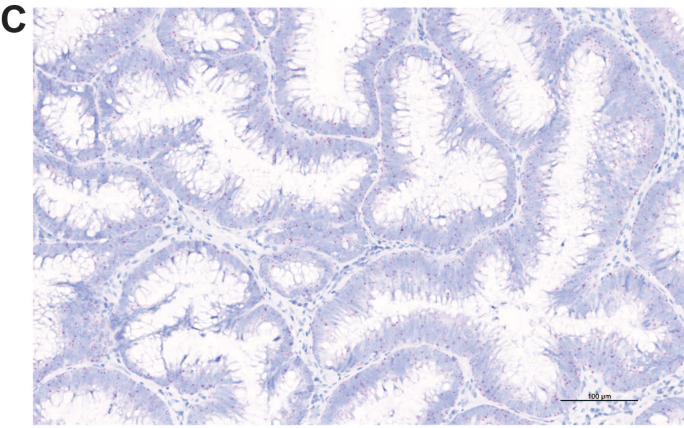
**SSL 2 (right flexure)**



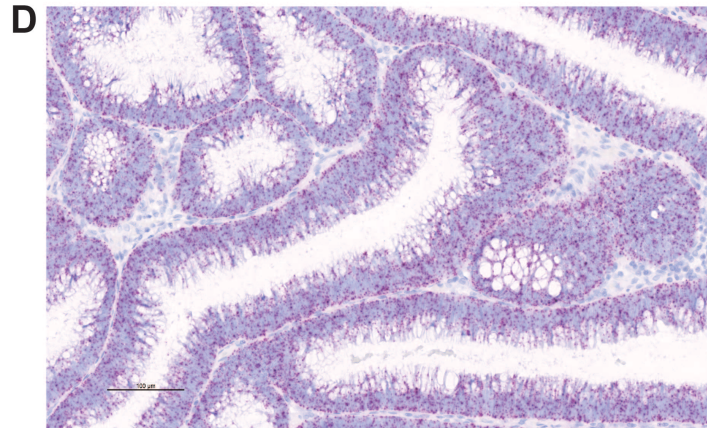
**HP 1 (sigmoid)**



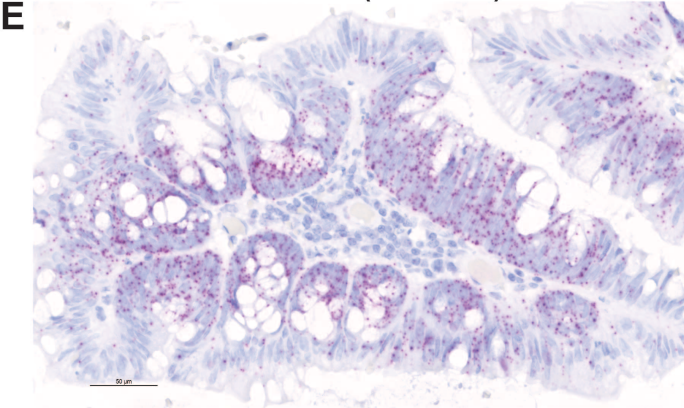
**cADN 1 (transversum)**



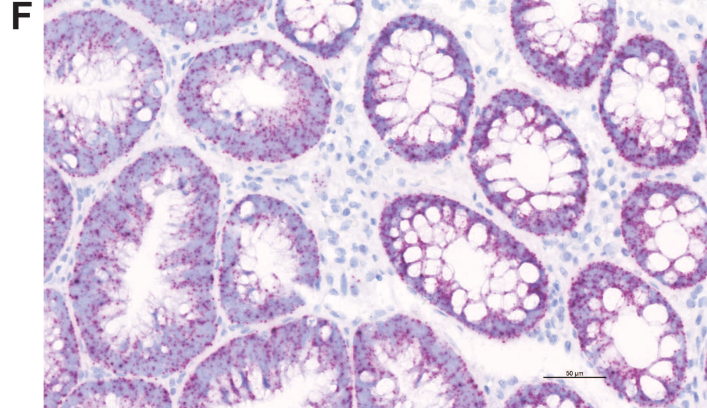
**cADN 2 (rectum)**



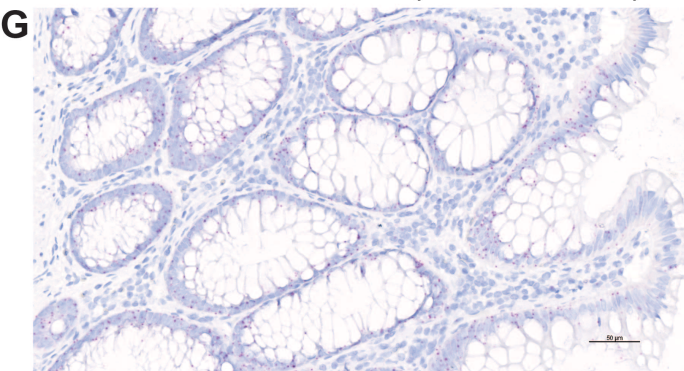
**TSA 2 (rectum)**



**TSA 3 and Normal mucosa (sigmoid)**



**Normal mucosa (transversum)**



**Normal mucosa (sigmoid)**

