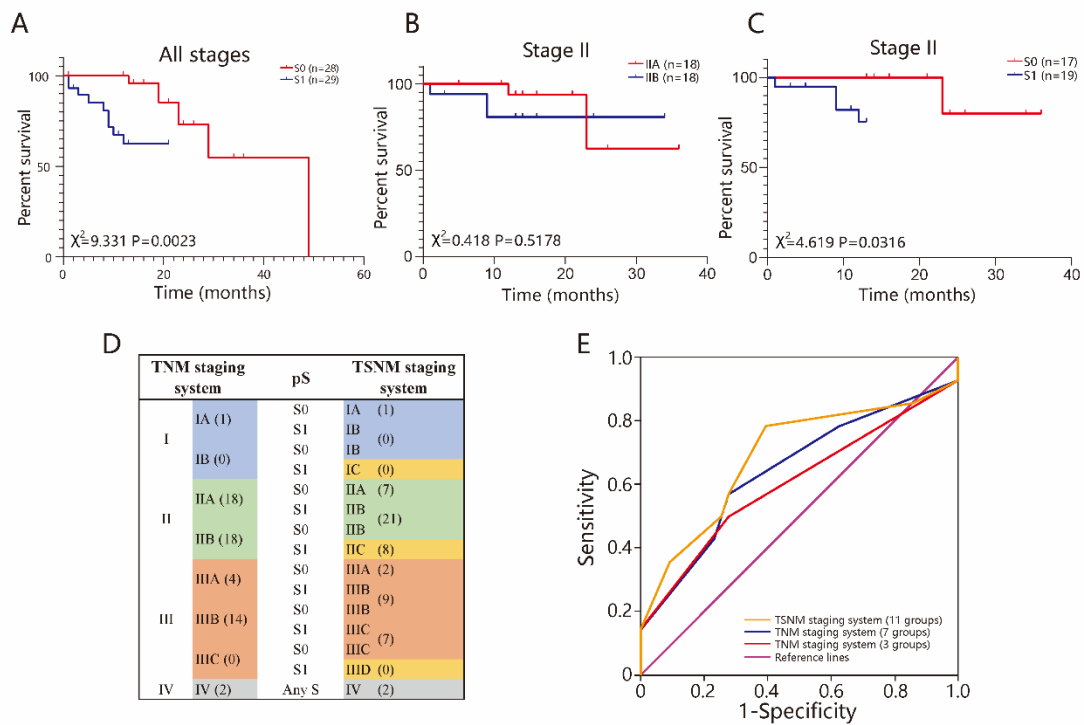


## Supplementary materials

Figure S1



**Figure S1 The combination of TSR and TNM staging system.** A There was significant difference between S0 and S1 for all stages ( $P=0.0023$ ). B Among the stage II, there was no significant difference between IIA and IIB ( $P=0.5178$ ). C Among the stage II, there was significant difference between S0 and S1 ( $P=0.0316$ ). D The TSNM staging system, based on 7th TNM staging system and pS status. The number represents the number of people who belong to the staging. E TSNM performed well in predicting the clinical outcomes of ESCC patients compared to other factors.