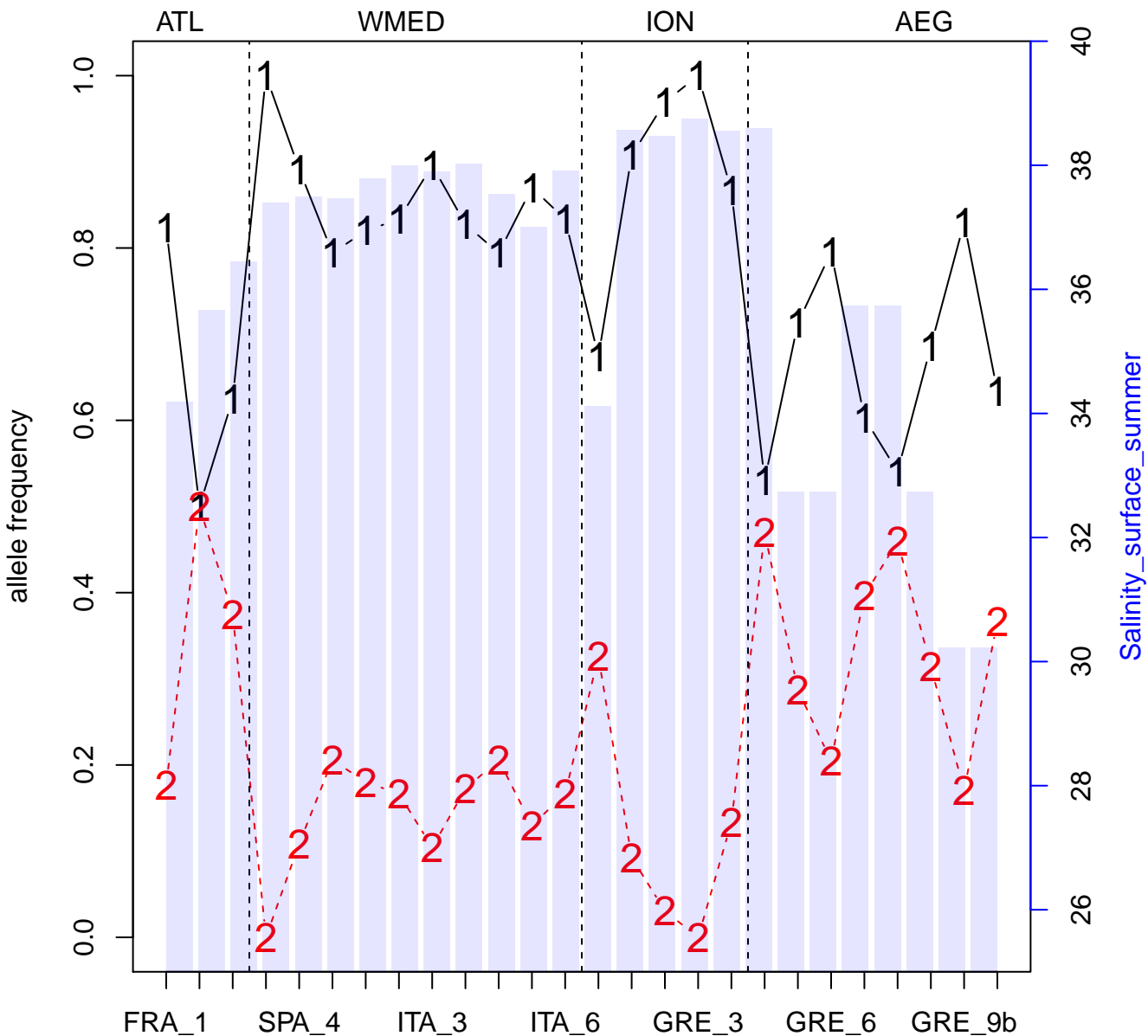


OL + BayEnv

SNP 9677_31



OL + BayEnv

SNP 9633_68

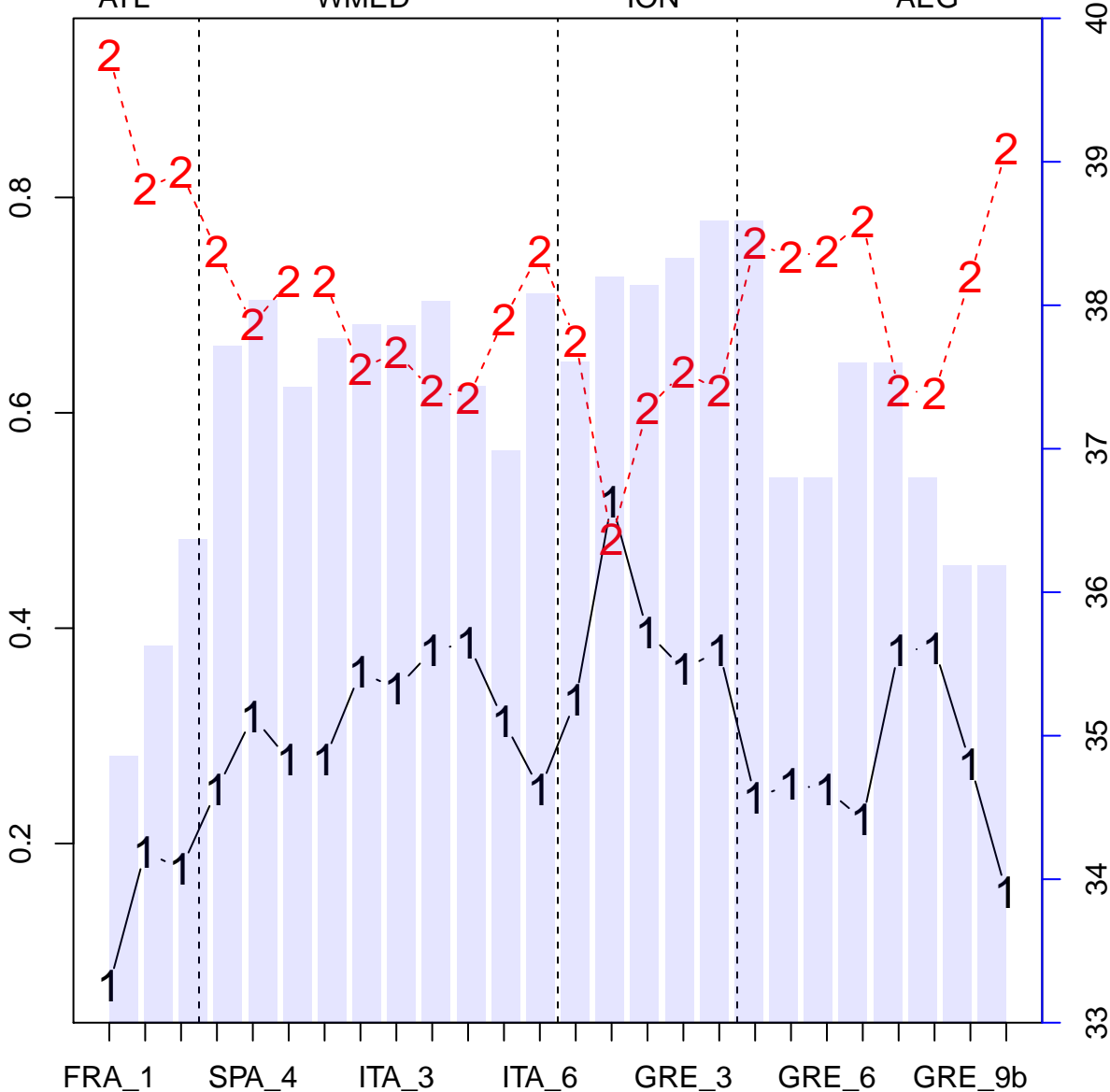
ATL

WMED

ION

AEG

allele frequency



Salinity_20m_summer

40
39
38
37
36
35
34
33

OL + BayEnv

SNP 13310_71

ATL

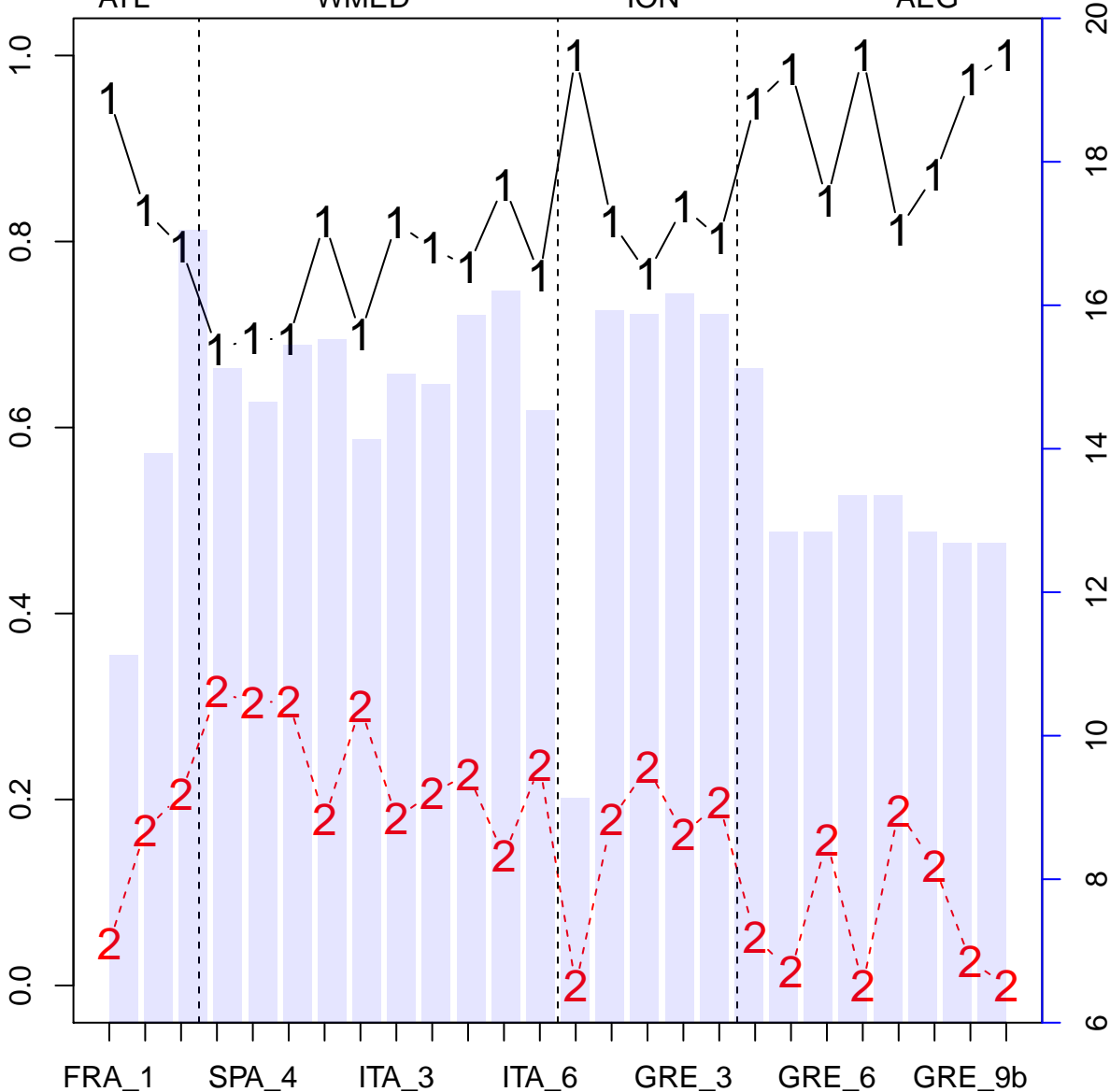
WMED

ION

AEG

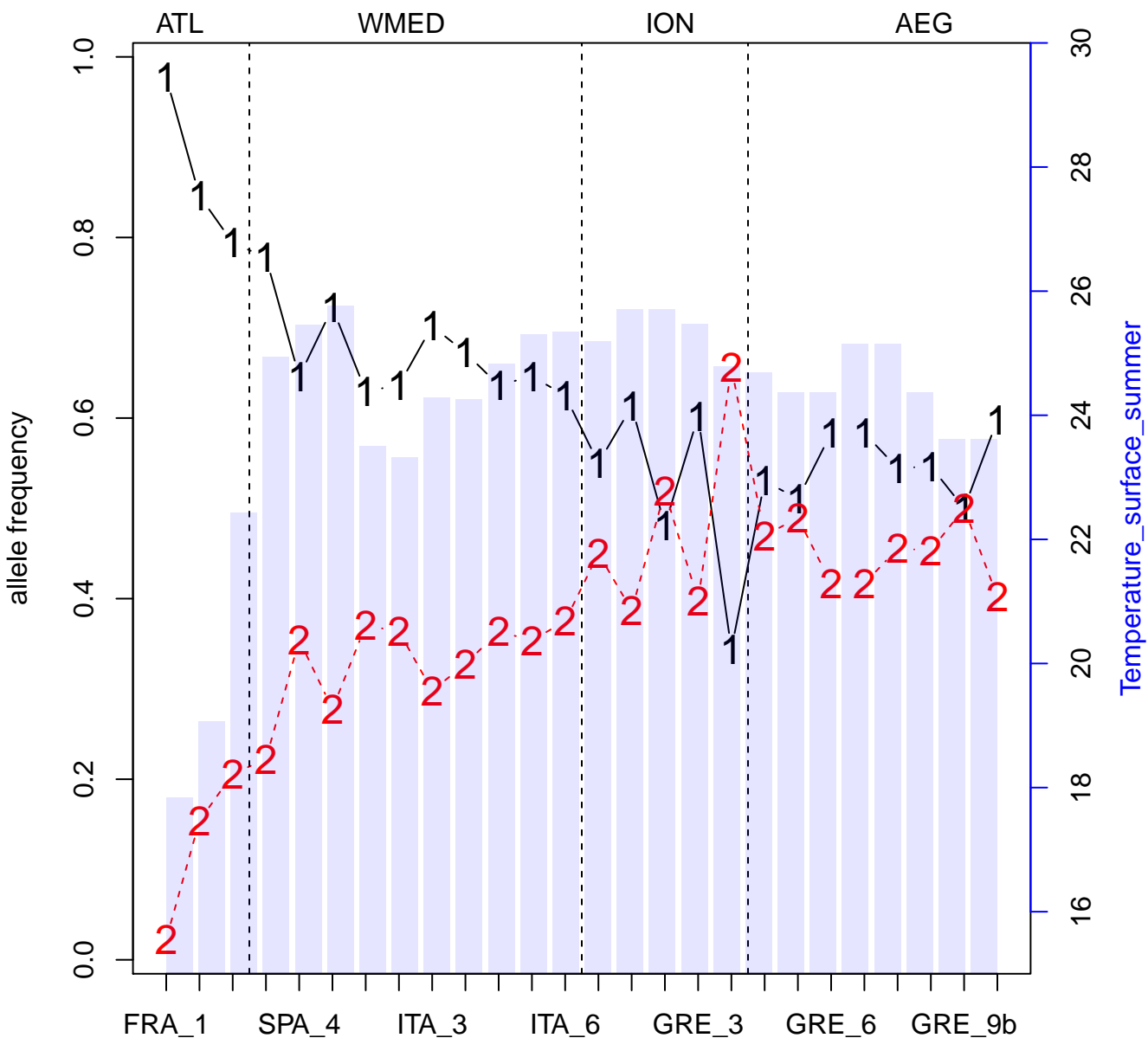
allele frequency

Temperature_surface_winter



OL + BayEnv

SNP 2689_62



OL + BayEnv

SNP 8301_44

ATL

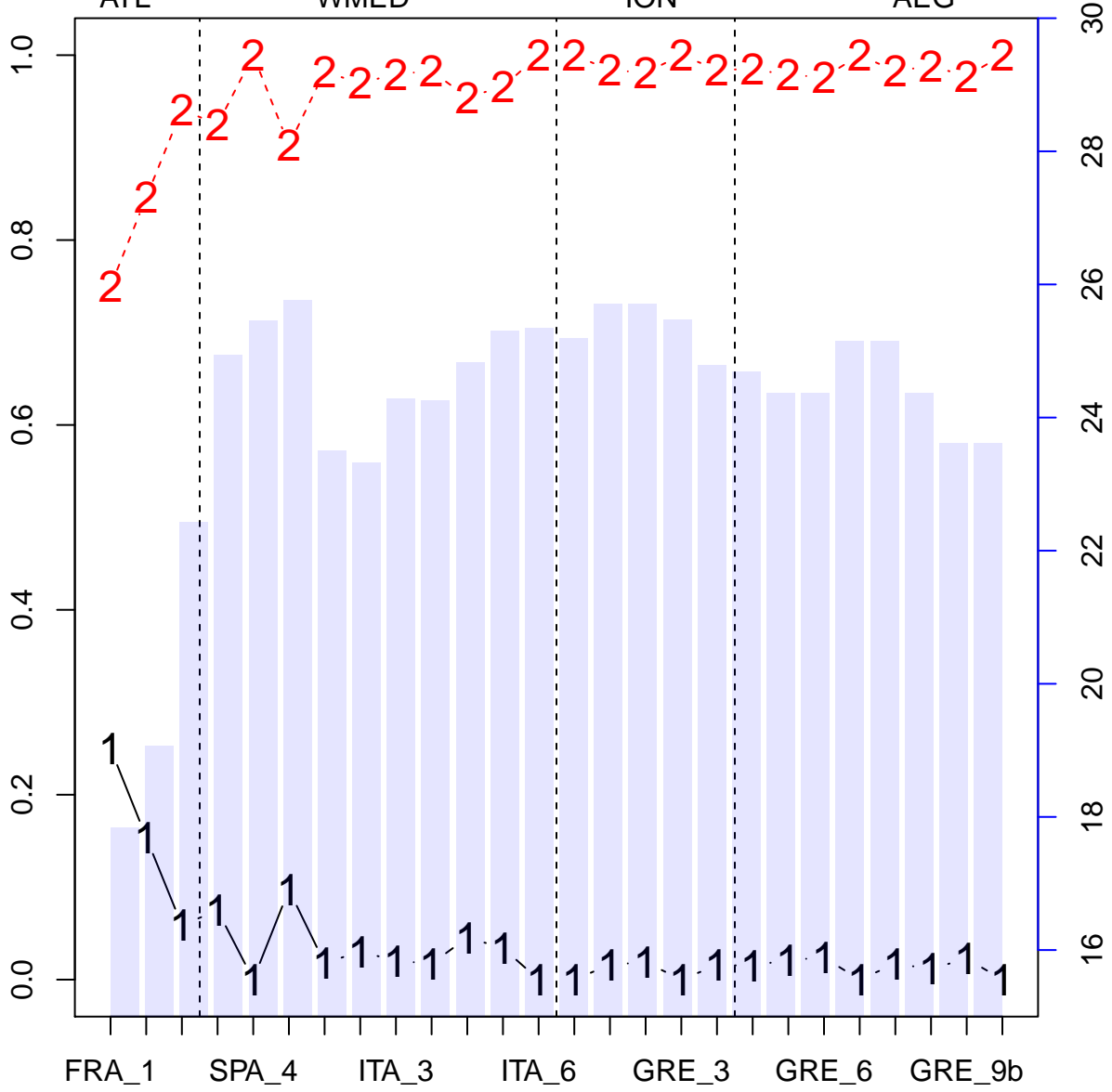
WMED

ION

AEG

allele frequency

Temperature_surface_summer



OL + BayEnv

SNP 10734_15

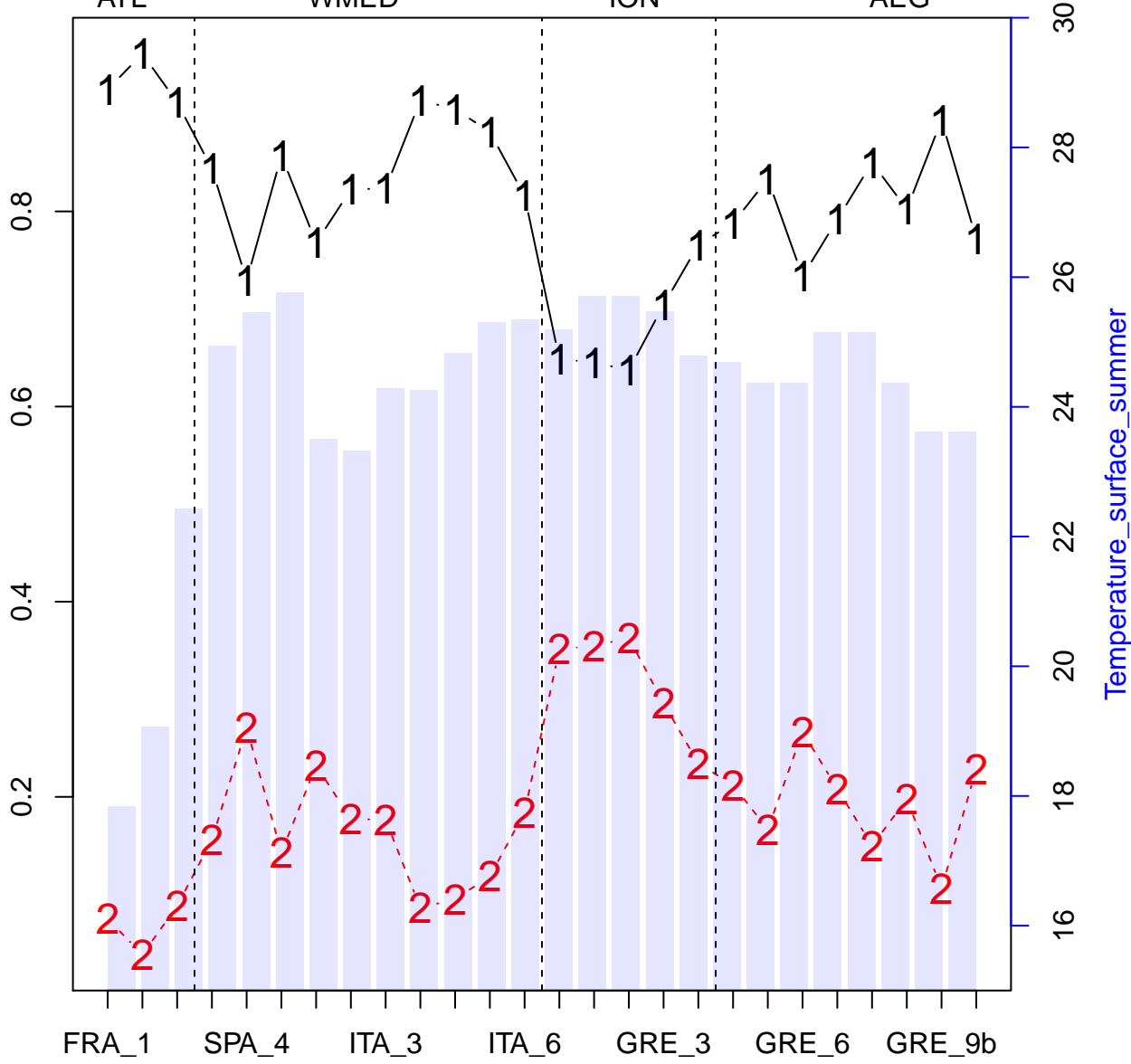
ATL

WMED

ION

AEG

allele frequency



OL

SNP 13518_71

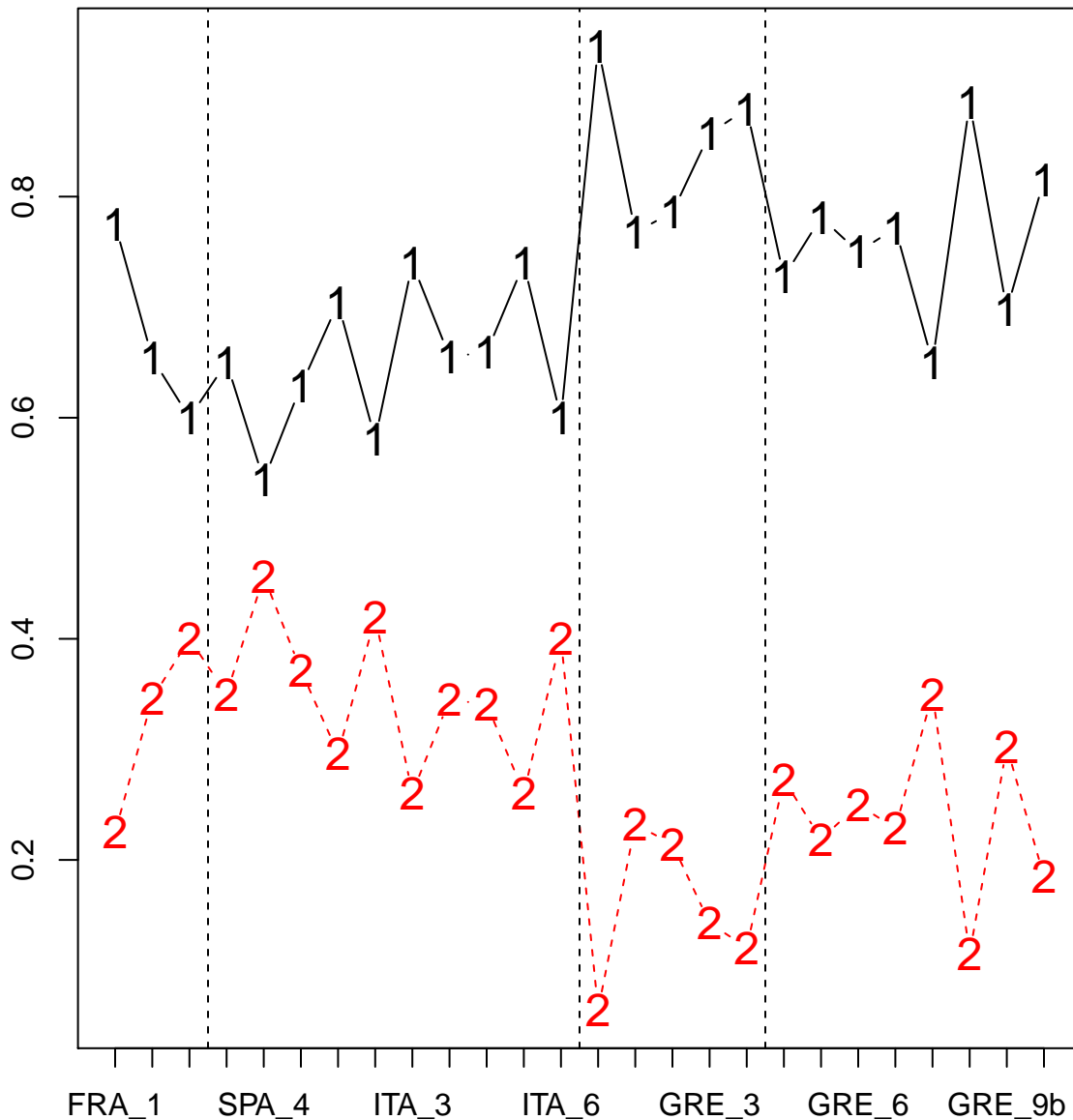
ATL

WMED

ION

AEG

allele frequency



OL

SNP 8150_73

ATL

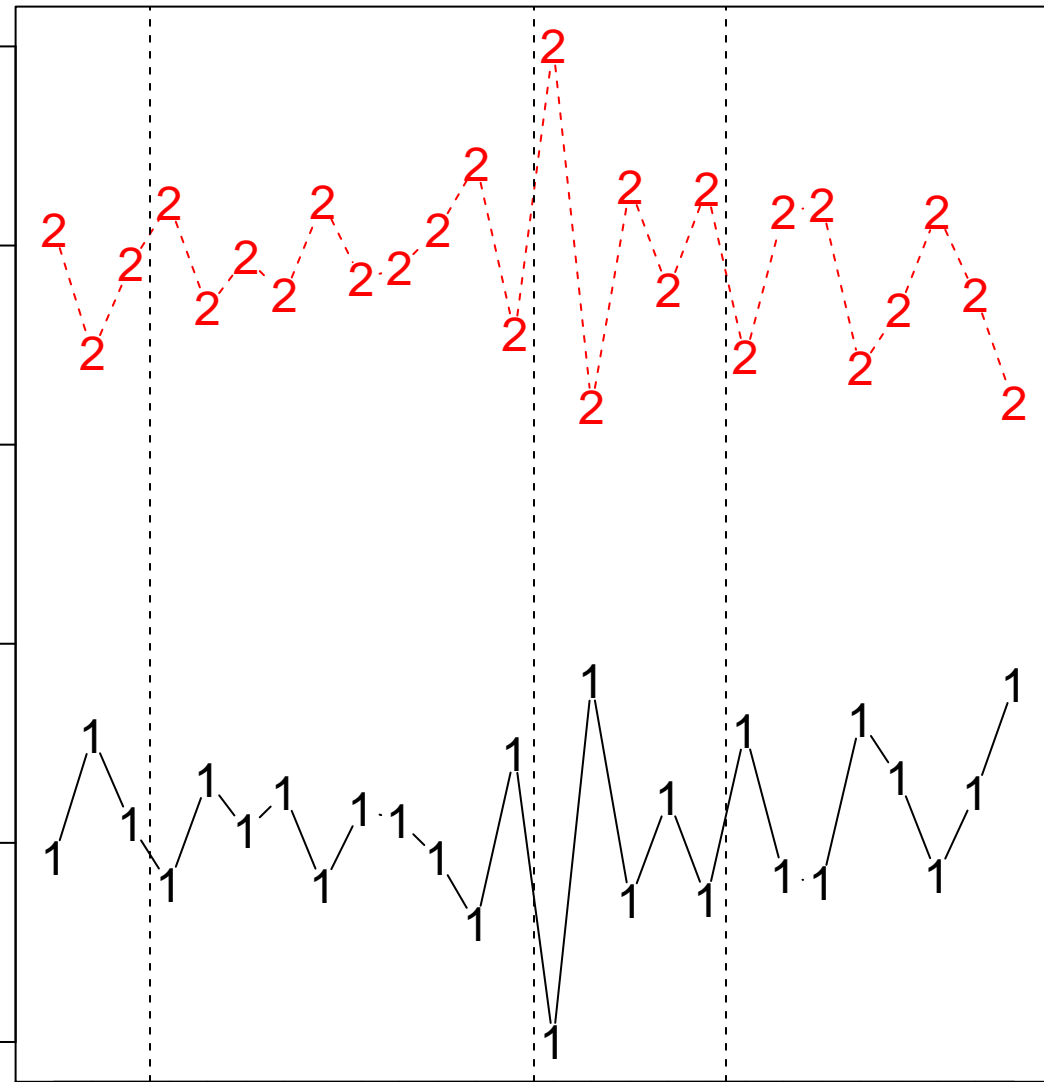
WMED

ION

AEG

allele frequency

1.0
0.8
0.6
0.4
0.2
0.0



FRA_1

SPA_4

ITA_3

ITA_6

GRE_3

GRE_6

GRE_9b

OL

SNP 12615_64

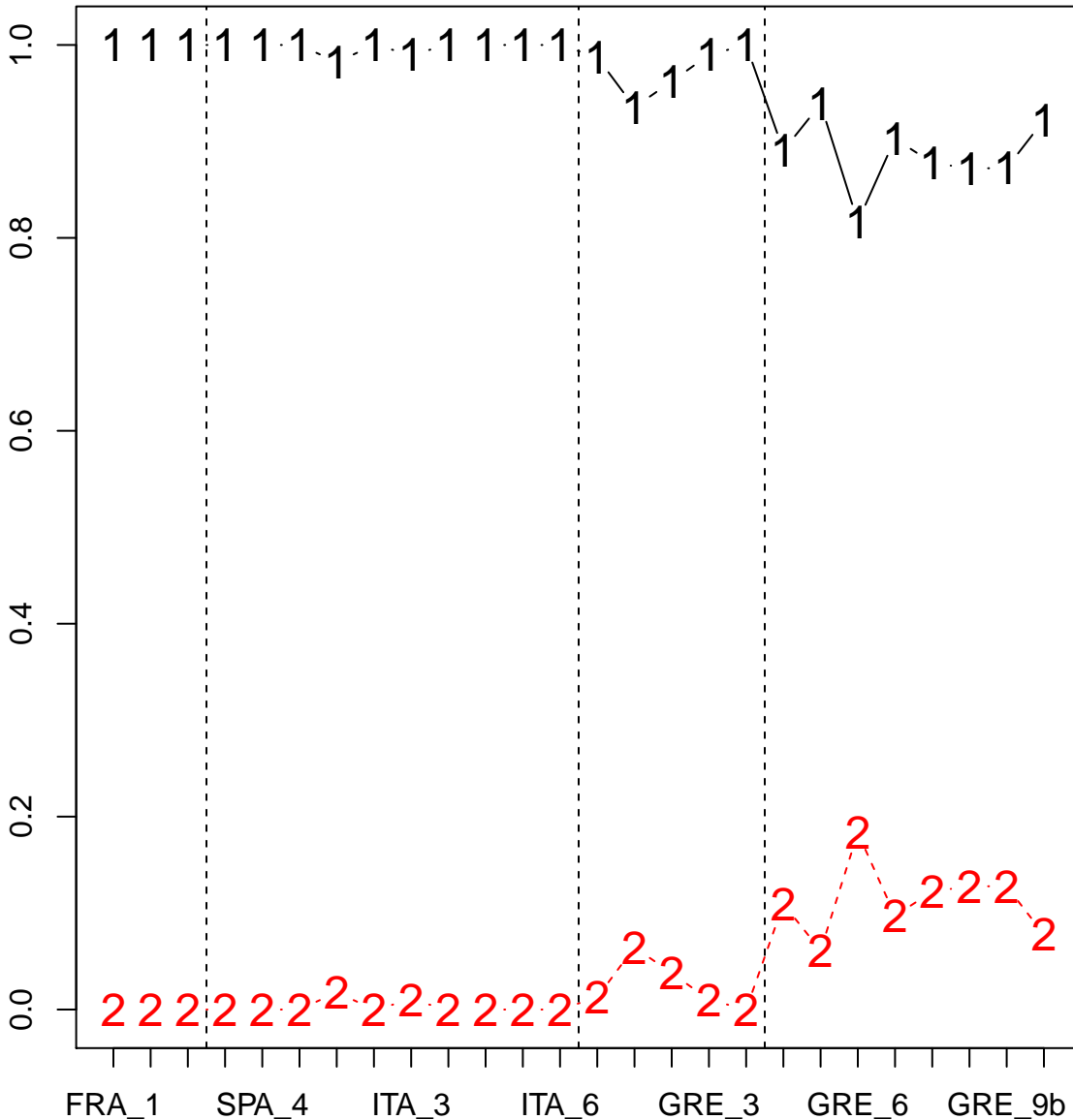
ATL

WMED

ION

AEG

allele frequency



OL

SNP 11878_40

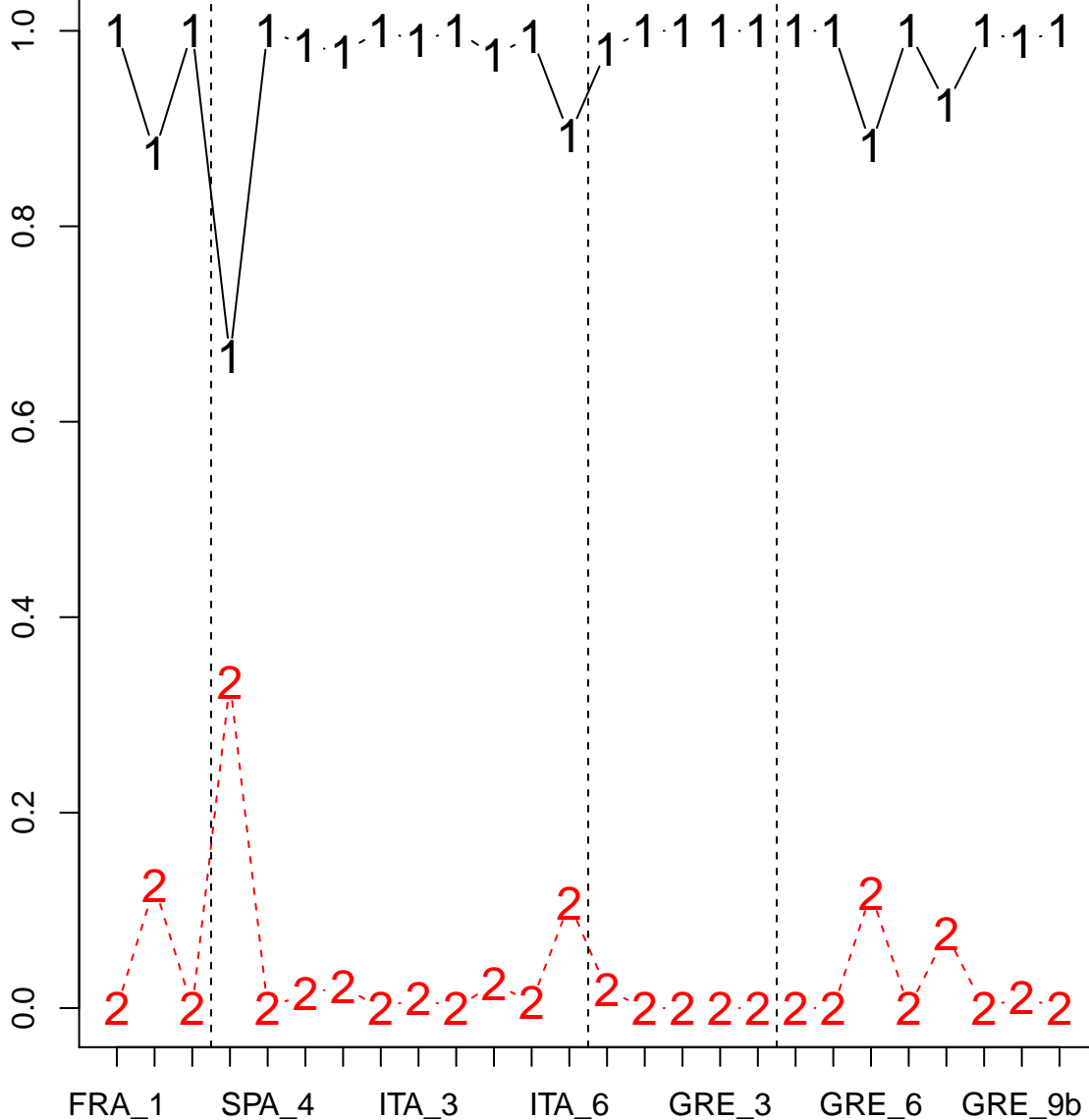
ATL

WMED

ION

AEG

allele frequency



OL

SNP 132_61

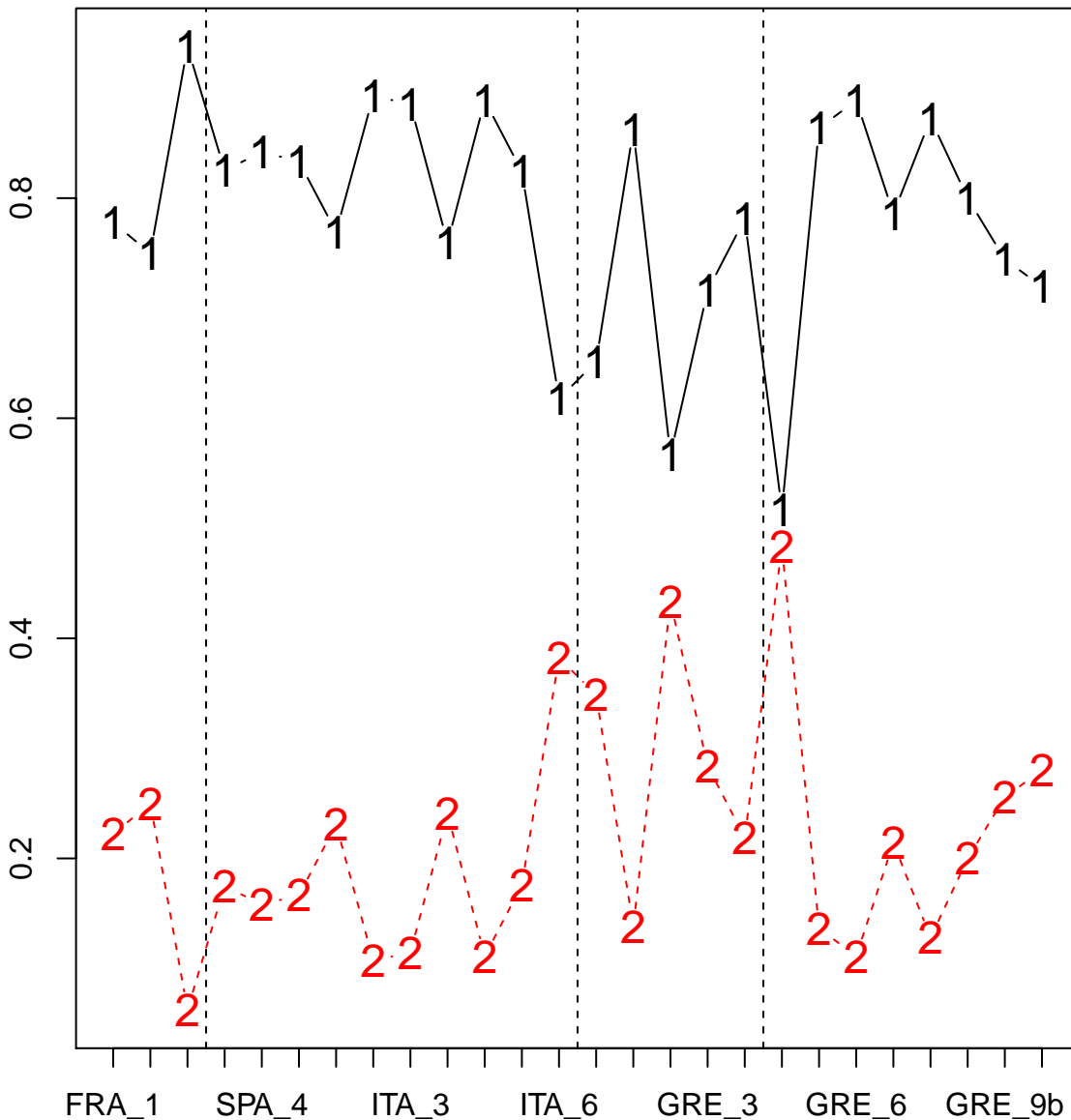
ATL

WMED

ION

AEG

allele frequency



OL

SNP 270_23

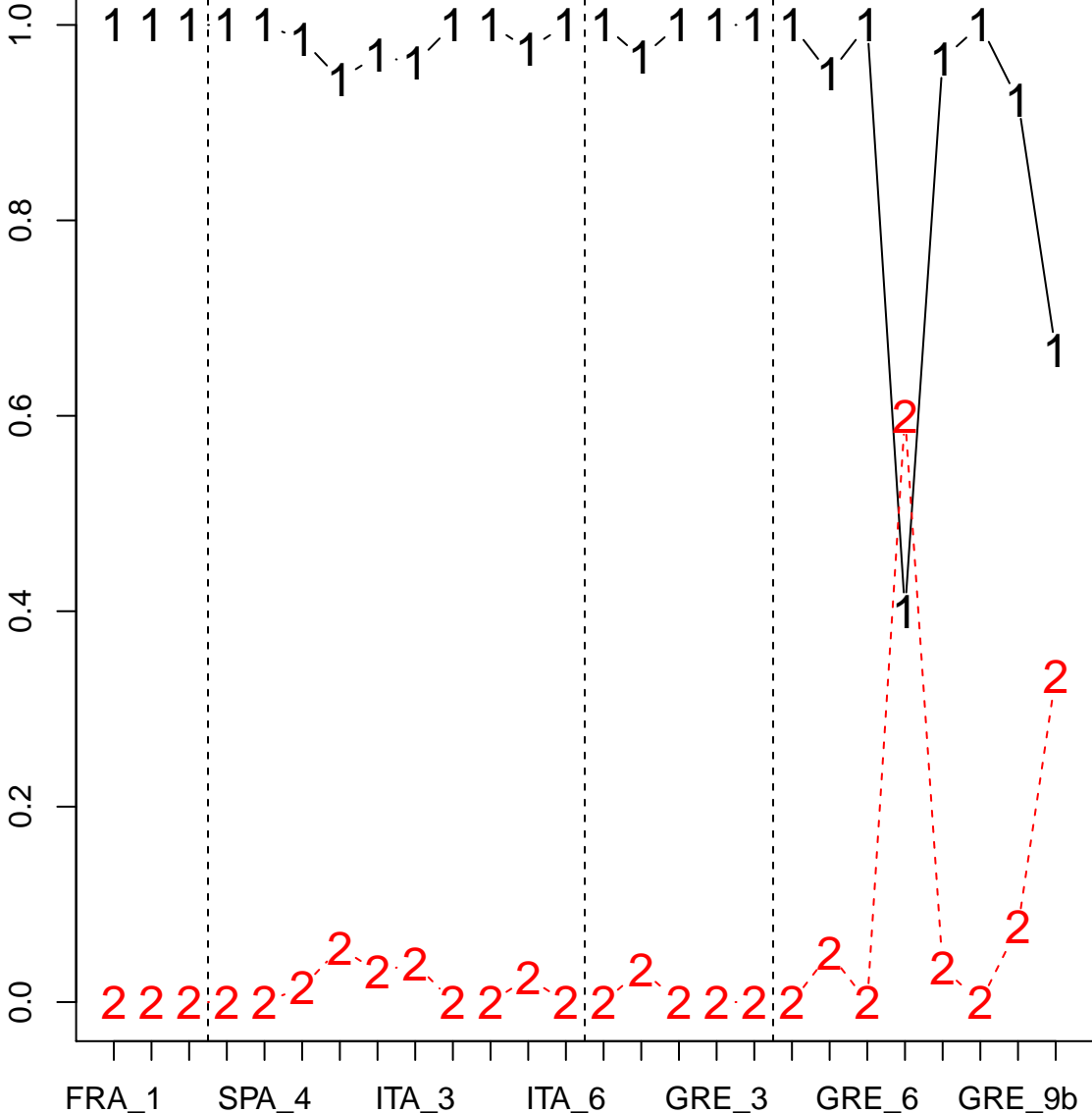
ATL

WMED

ION

AEG

allele frequency



OL

SNP 10524_58

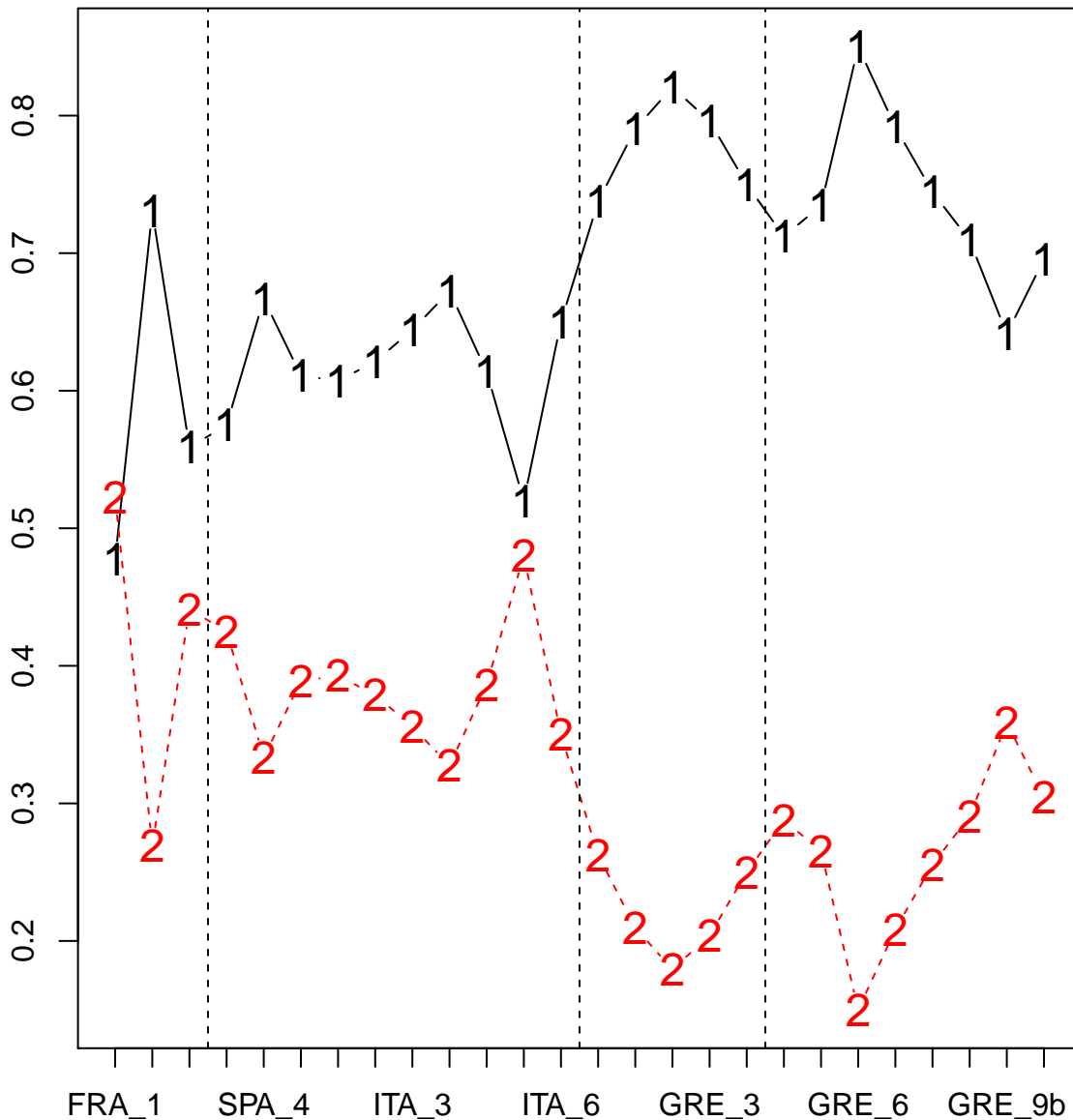
ATL

WMED

ION

AEG

allele frequency



OL

SNP 13129_86

ATL

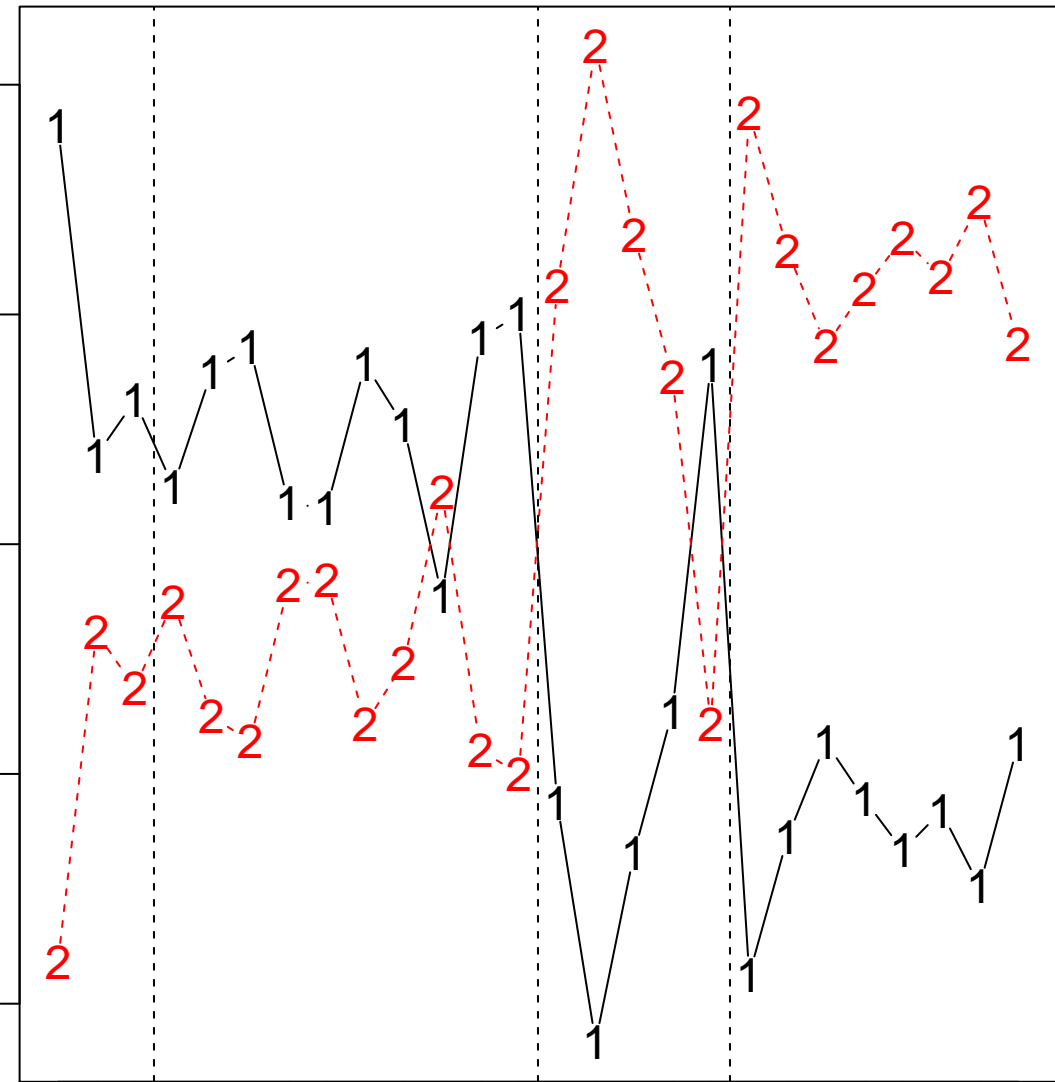
WMED

ION

AEG

allele frequency

0.7
0.6
0.5
0.4
0.3



FRA_1 SPA_4 ITA_3 ITA_6 GRE_3 GRE_6 GRE_9b

OL

SNP 60_69

ATL

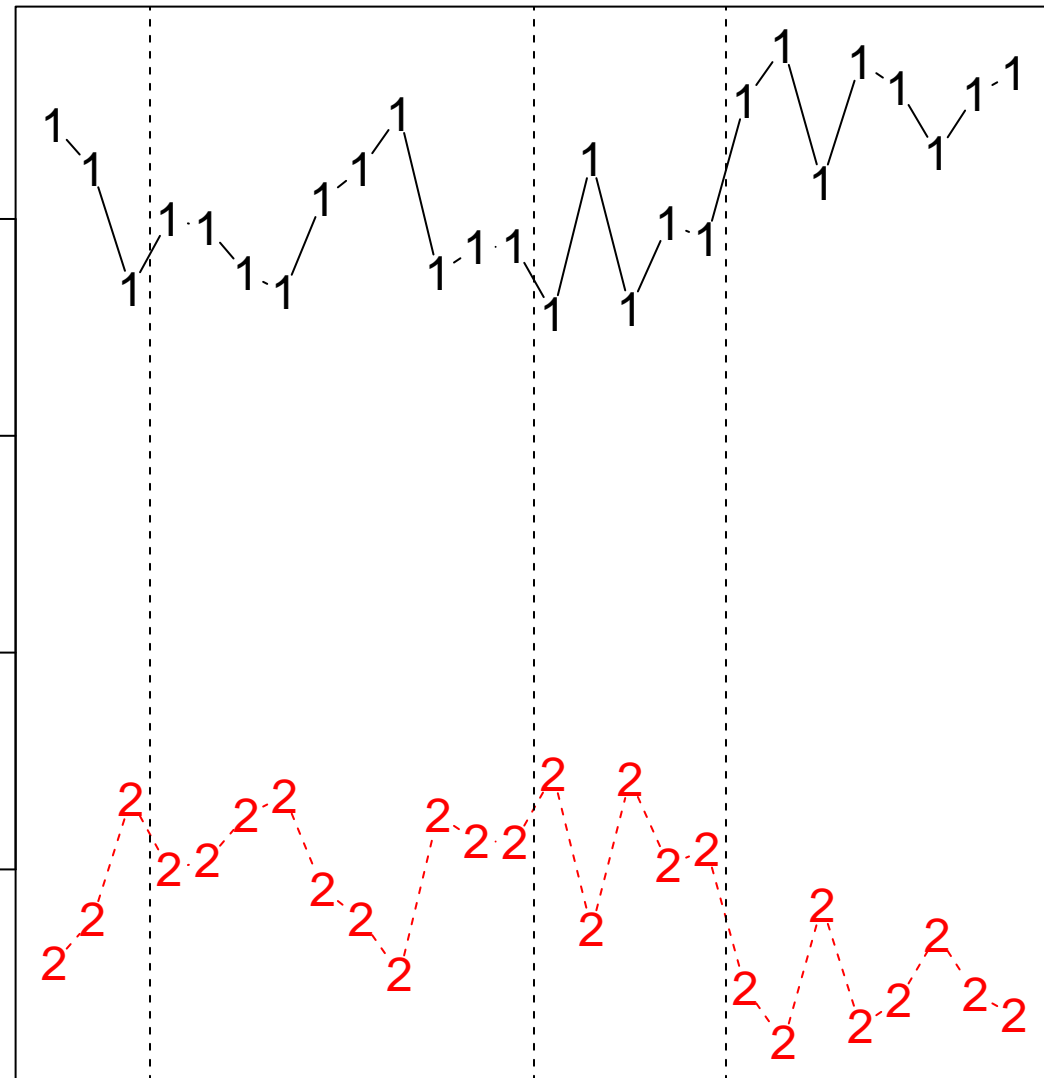
WMED

ION

AEG

allele frequency

0.8
0.6
0.4
0.2



FRA_1

SPA_4

ITA_3

ITA_6

GRE_3

GRE_6

GRE_9b

OL_4Clusters

SNP 7513_19

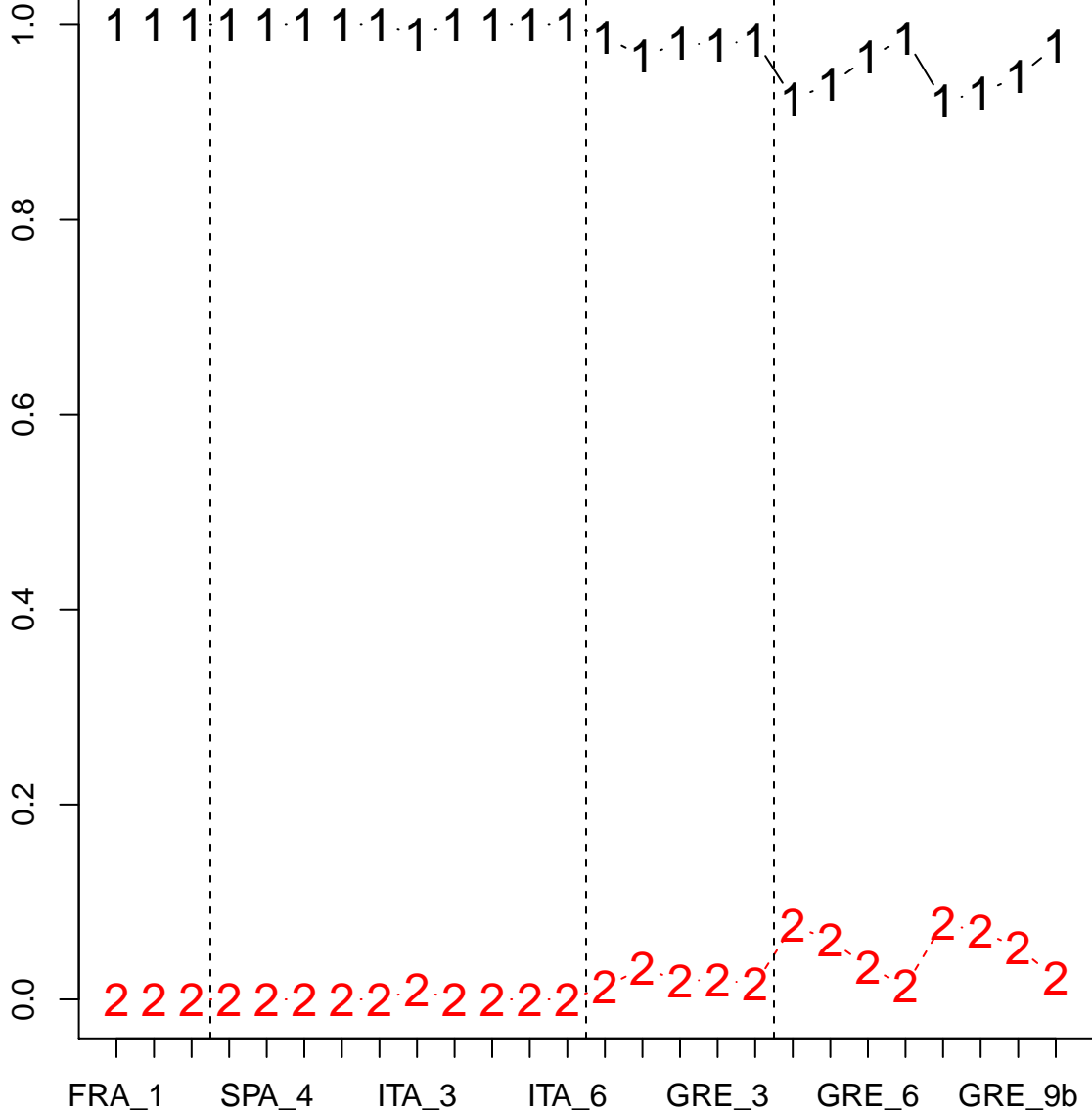
ATL

WMED

ION

AEG

allele frequency



OL_MED

SNP 239_15

ATL

WMED

ION

AEG

allele frequency

0.8

0.6

0.4

0.2

FRA_1

SPA_4

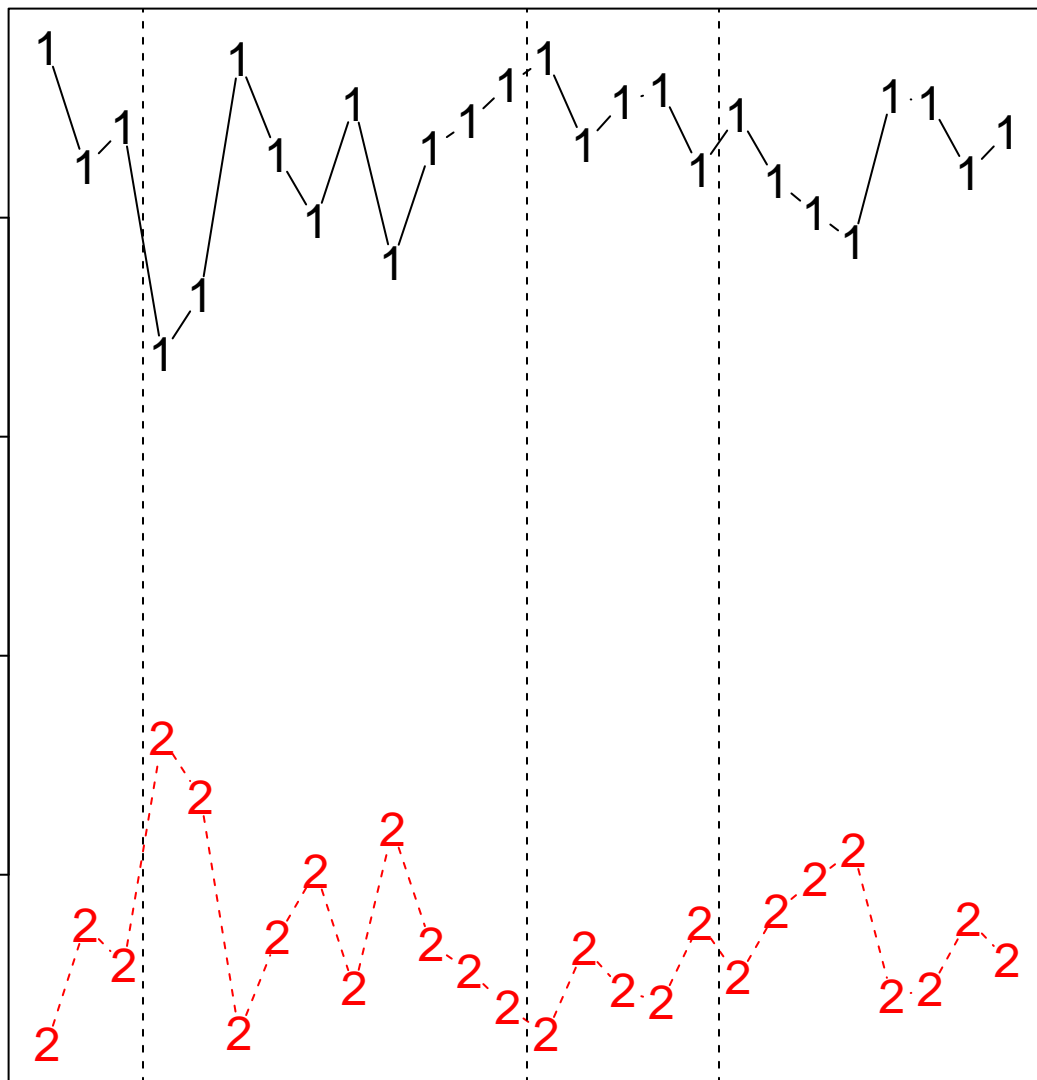
ITA_3

ITA_6

GRE_3

GRE_6

GRE_9b



OL

SNP 8727_39

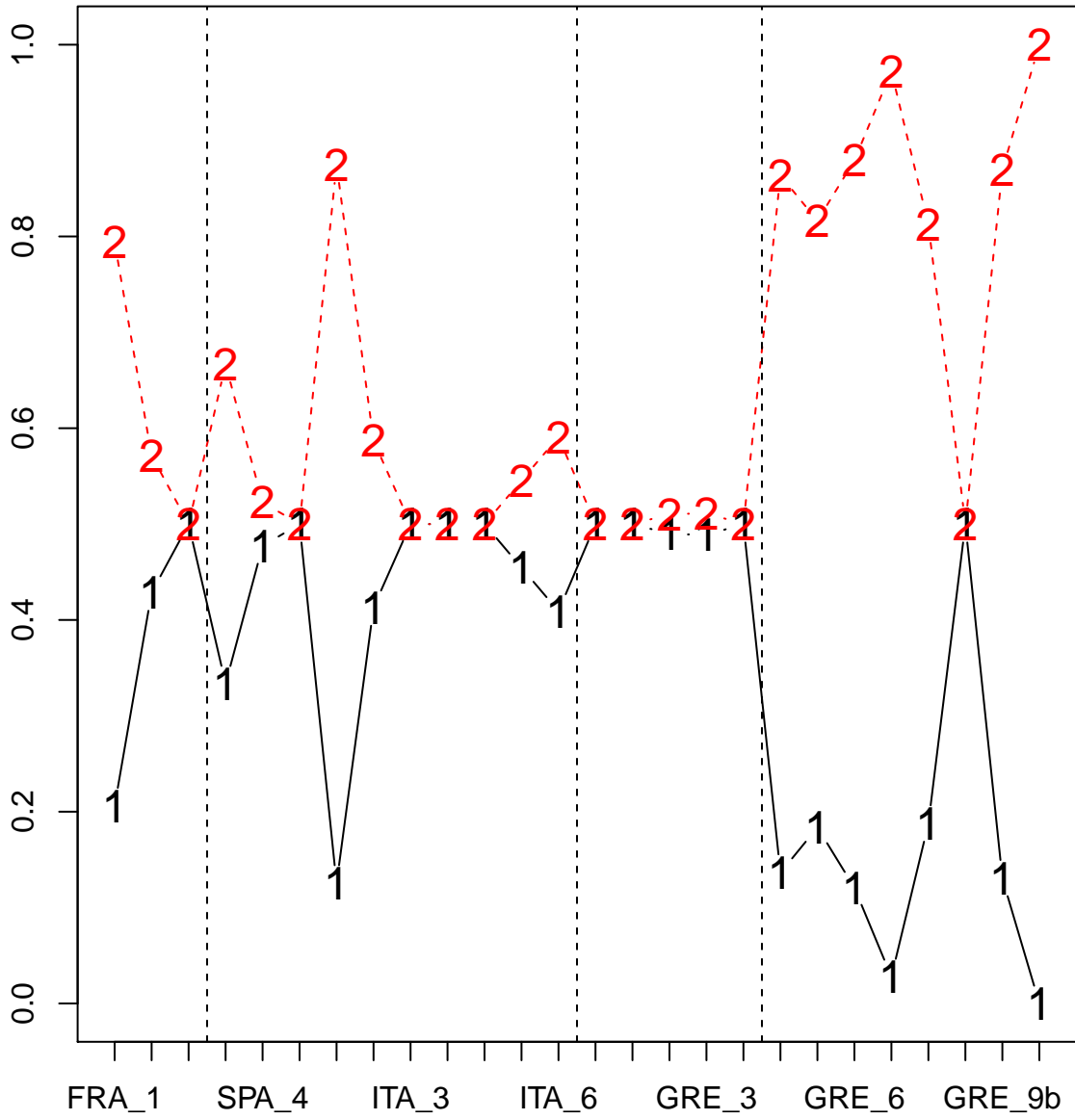
ATL

WMED

ION

AEG

allele frequency



BayEnv

SNP 9438_24

ATL

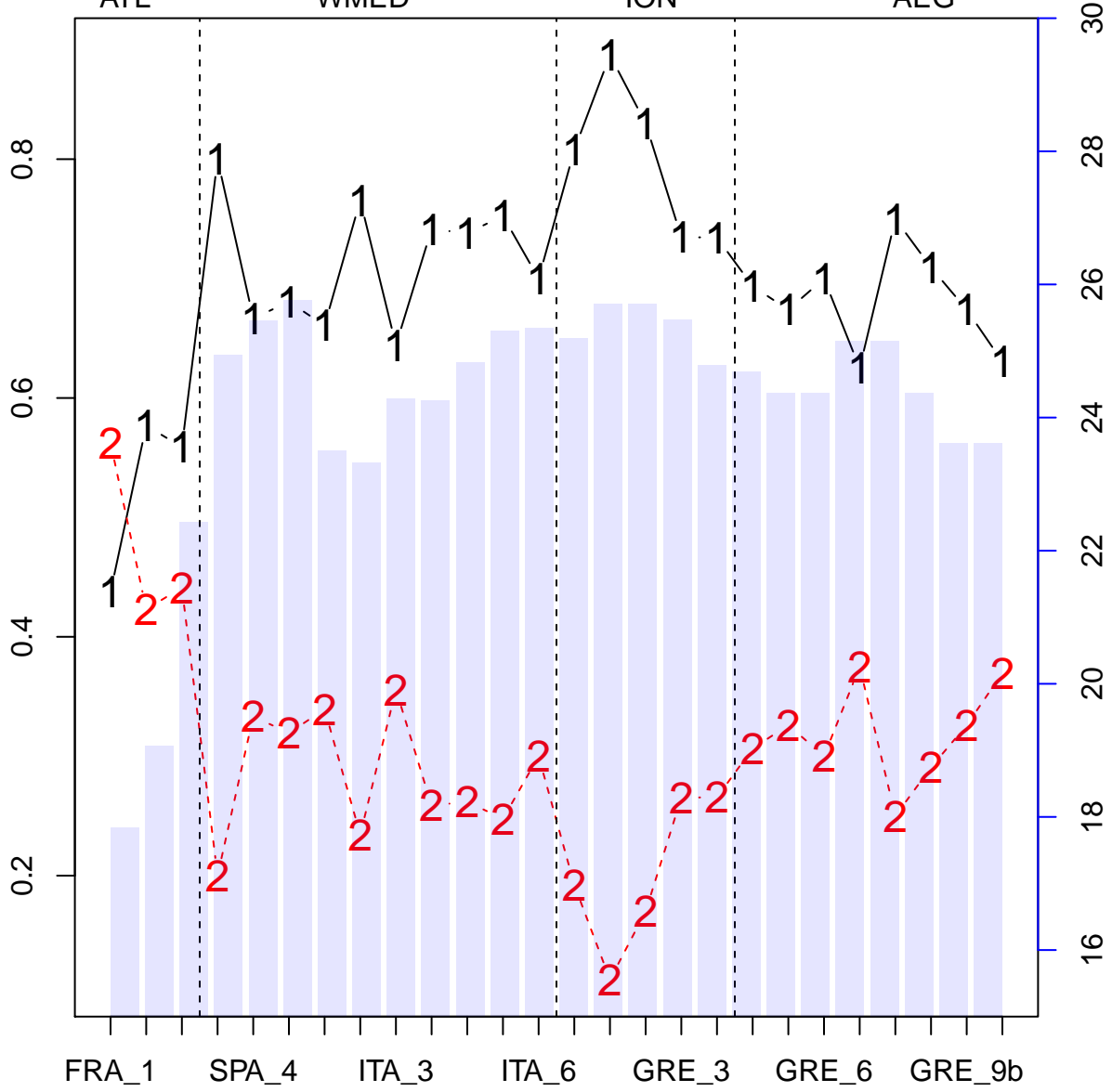
WMED

ION

AEG

allele frequency

Temperature_surface_summer



FRA_1

SPA_4

ITA_3

ITA_6

GRE_3

GRE_6

GRE_9b

30

28

26

24

22

20

18

16

BayEnv

SNP 13776_28

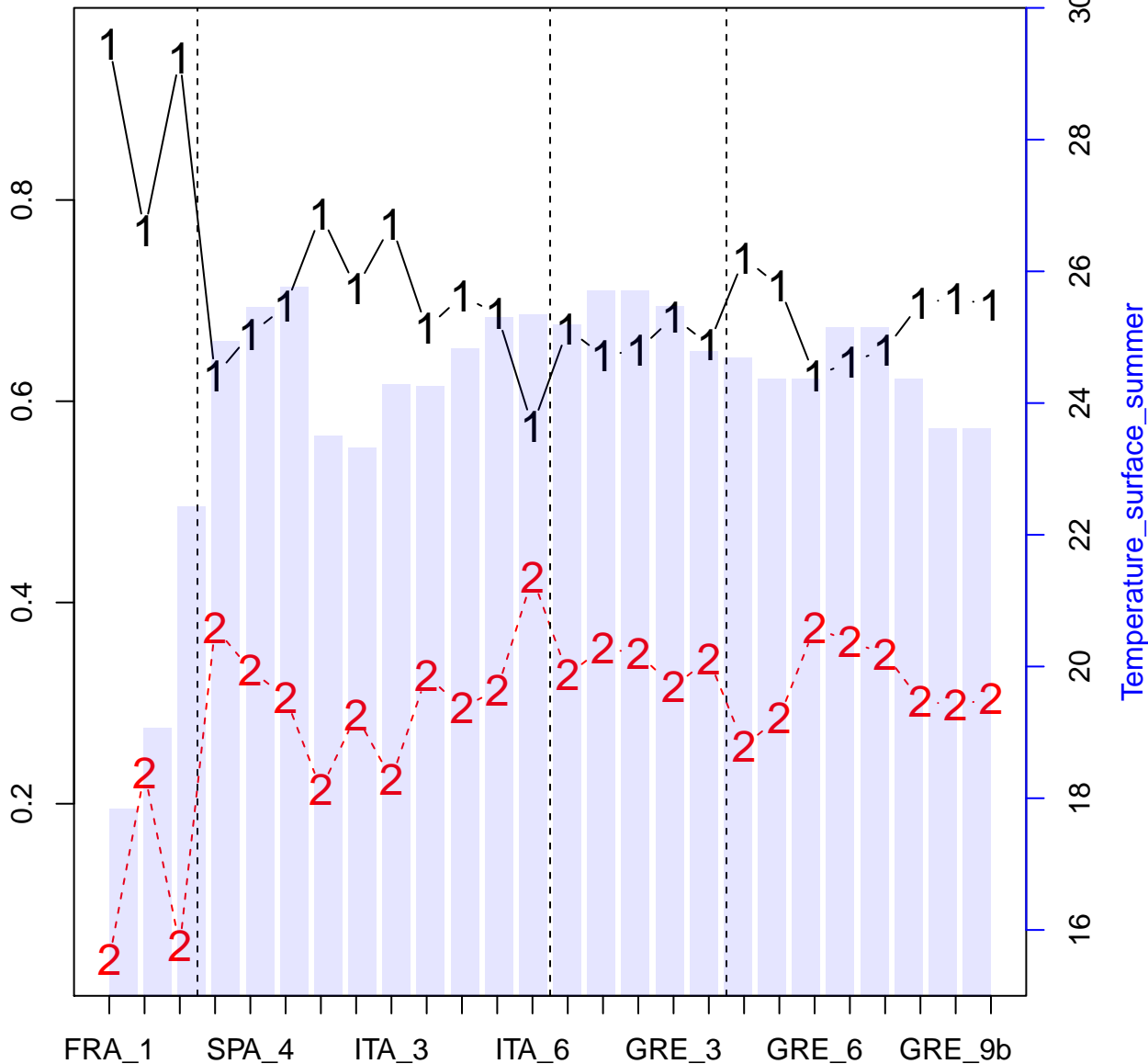
ATL

WMED

ION

AEG

allele frequency



Temperature_surface_summer

BayEnv

SNP 8913_85

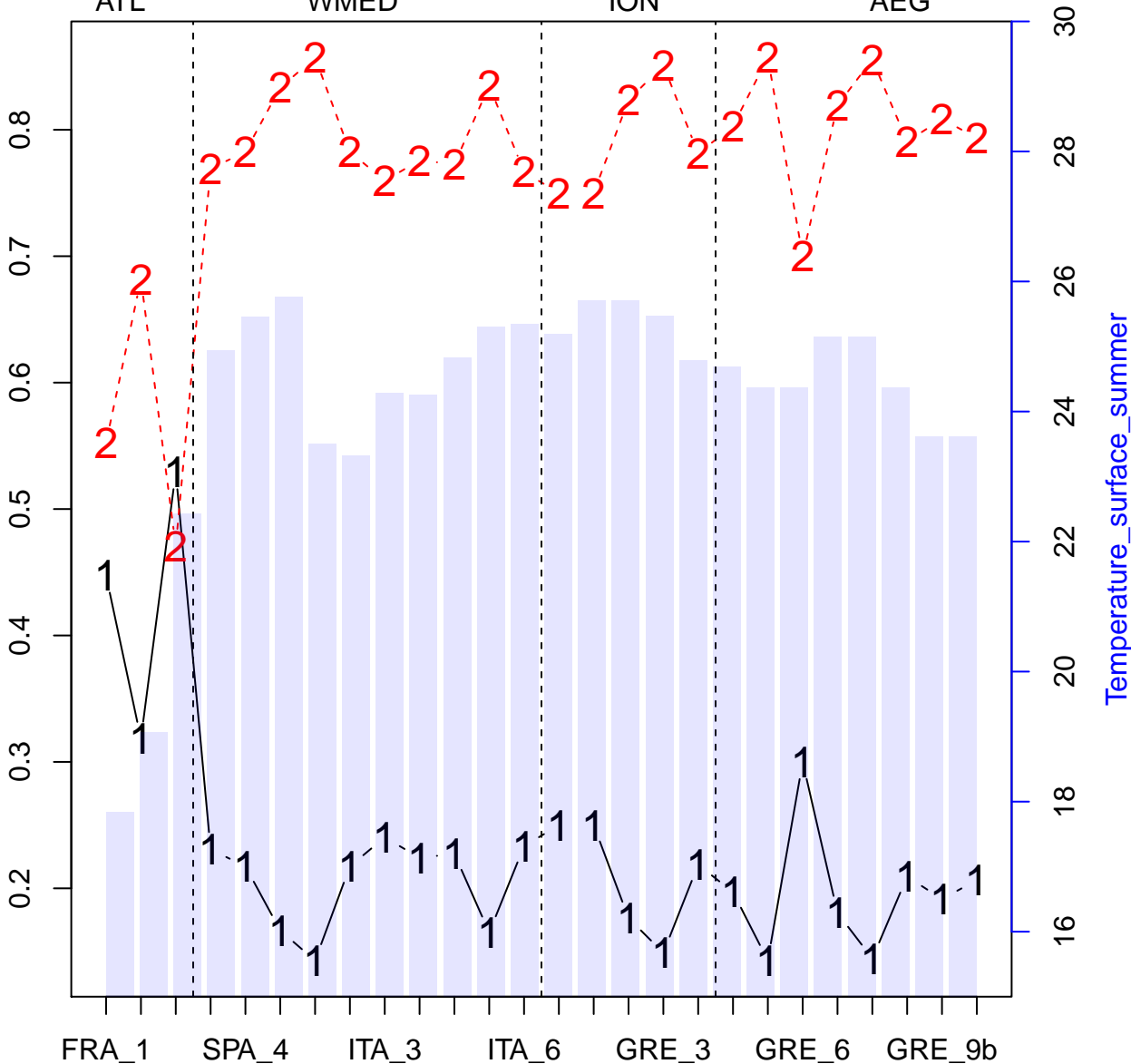
ATL

WMED

ION

AEG

allele frequency



BayEnv

SNP 3238_7

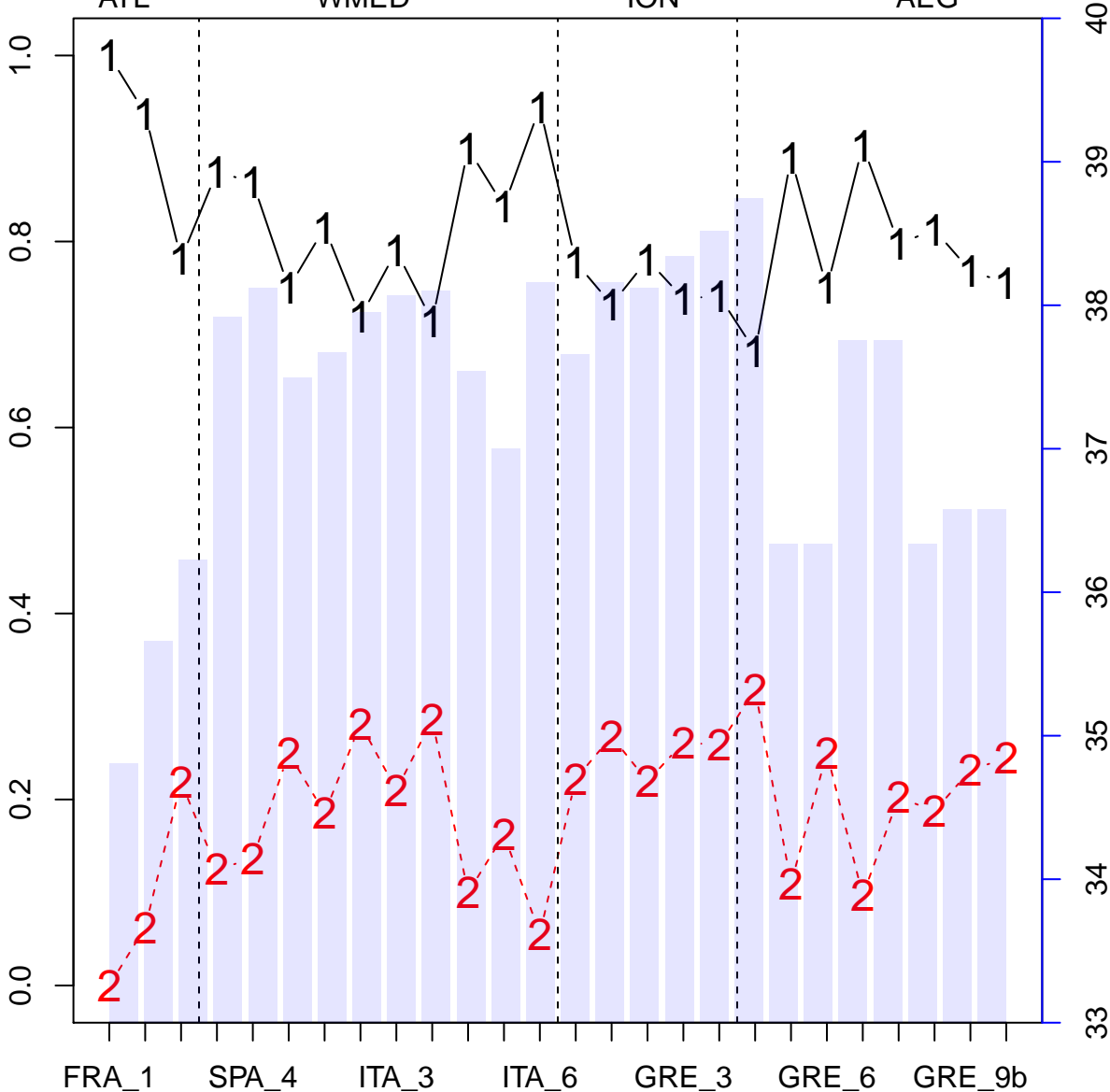
ATL

WMED

ION

AEG

allele frequency



Salinity_20m_winter

BayEnv

SNP 8813_23

ATL

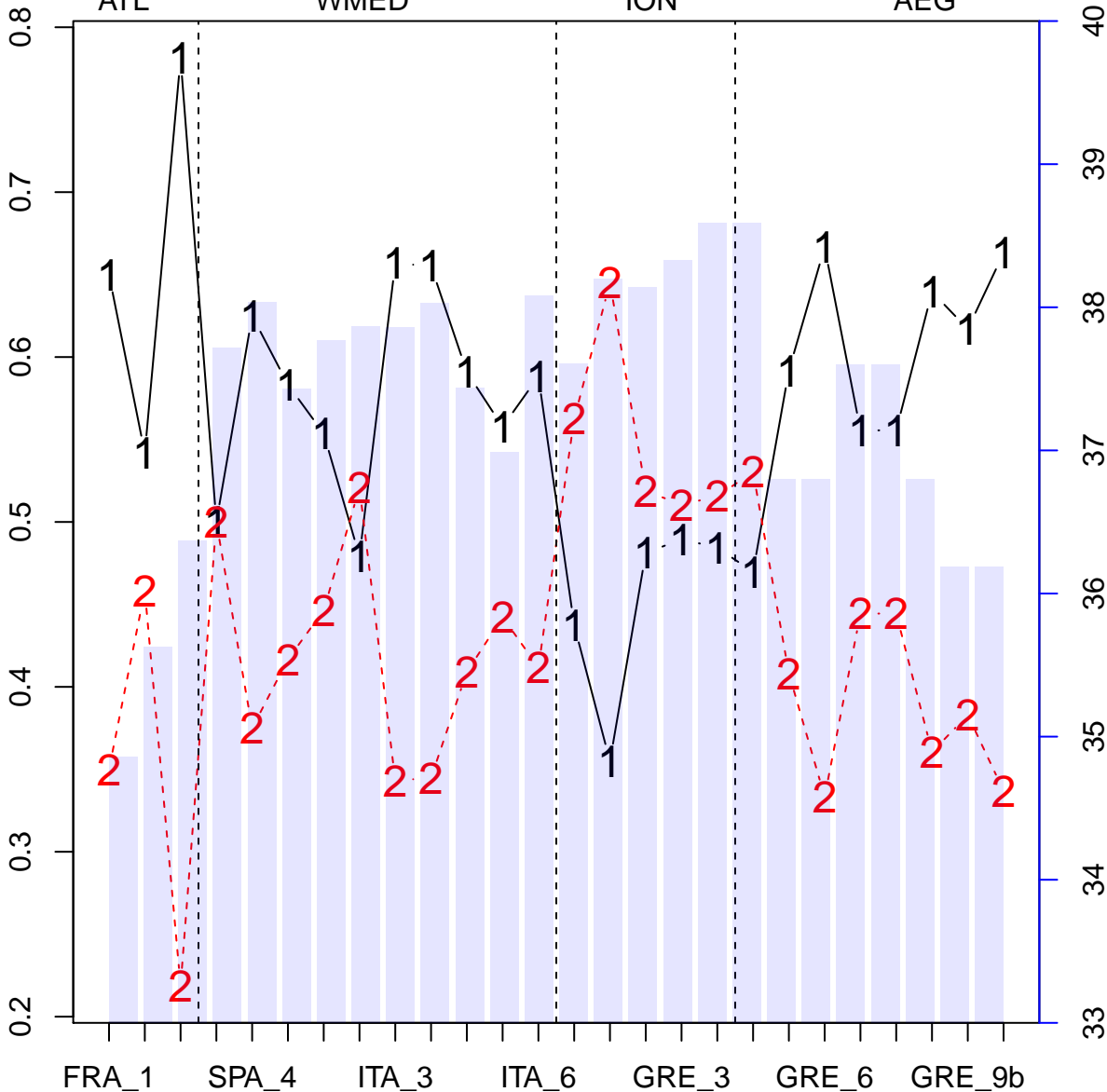
WMED

ION

AEG

allele frequency

Salinity_20m_summer



BayEnv

SNP 4455_78

ATL

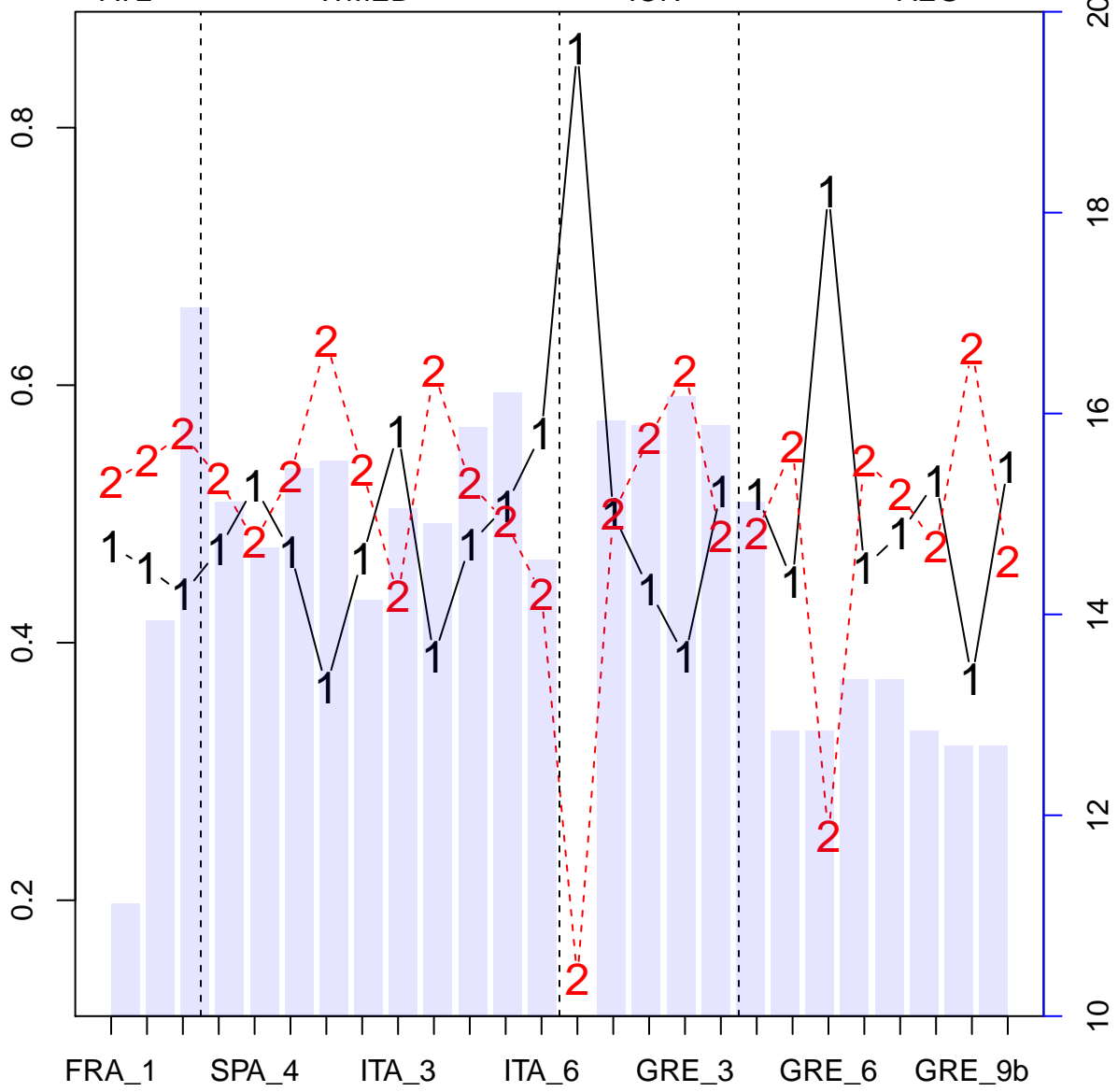
WMED

ION

AEG

allele frequency

Temperature_surface_winter



0.2
0.4
0.6
0.8

10
12
14
16
18
20

FRA_1 SPA_4 ITA_3 ITA_6 GRE_3 GRE_6 GRE_9b

BayEnv

SNP 3614_41

ATL

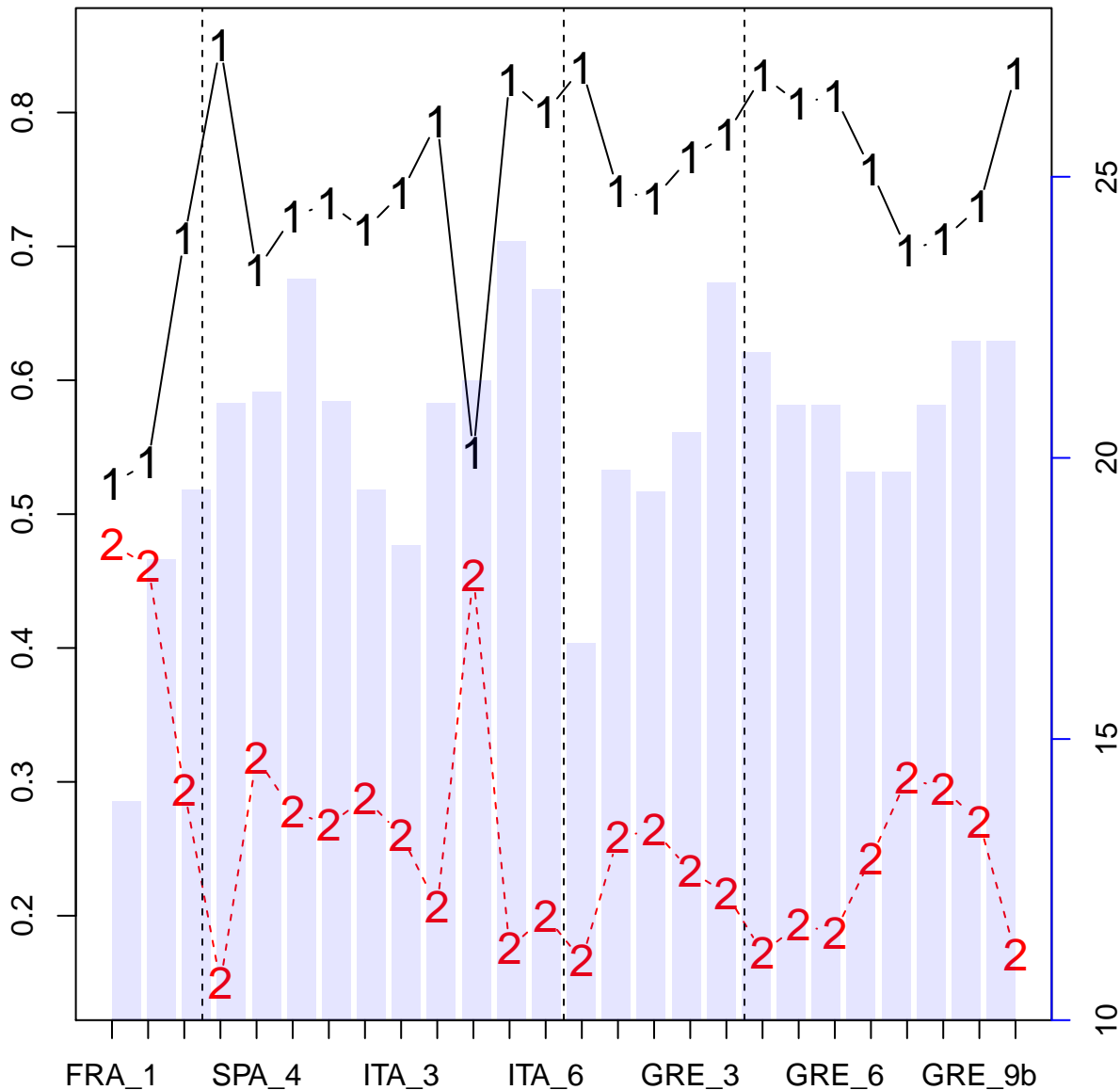
WMED

ION

AEG

allele frequency

Temperature_20m_summer



10

15

20

25

BayEnv

SNP 4810_70

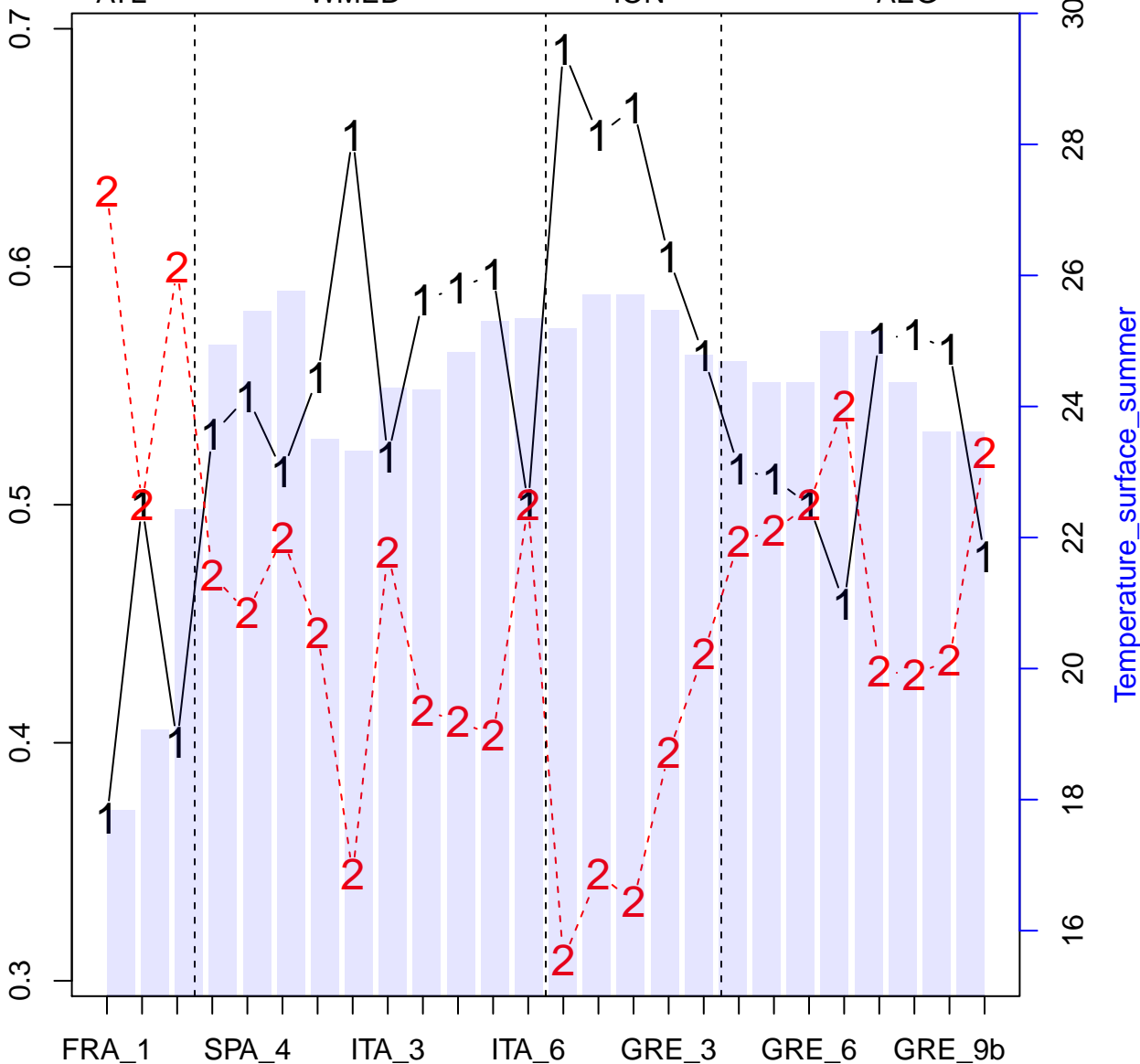
ATL

WMED

ION

AEG

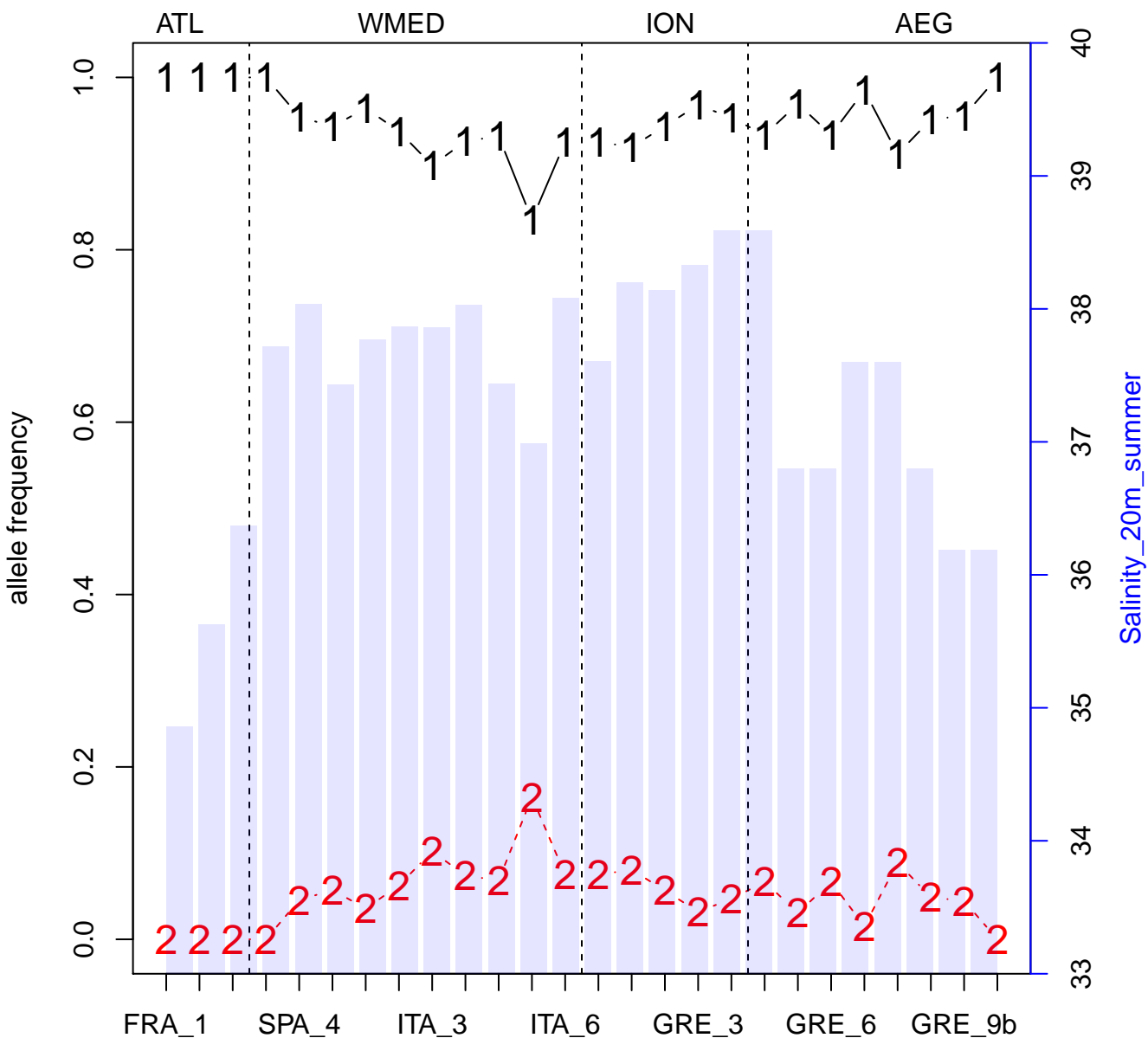
allele frequency



Temperature_surface_summer

BayEnv

SNP 10473_54



BayEnv

SNP 13674_61

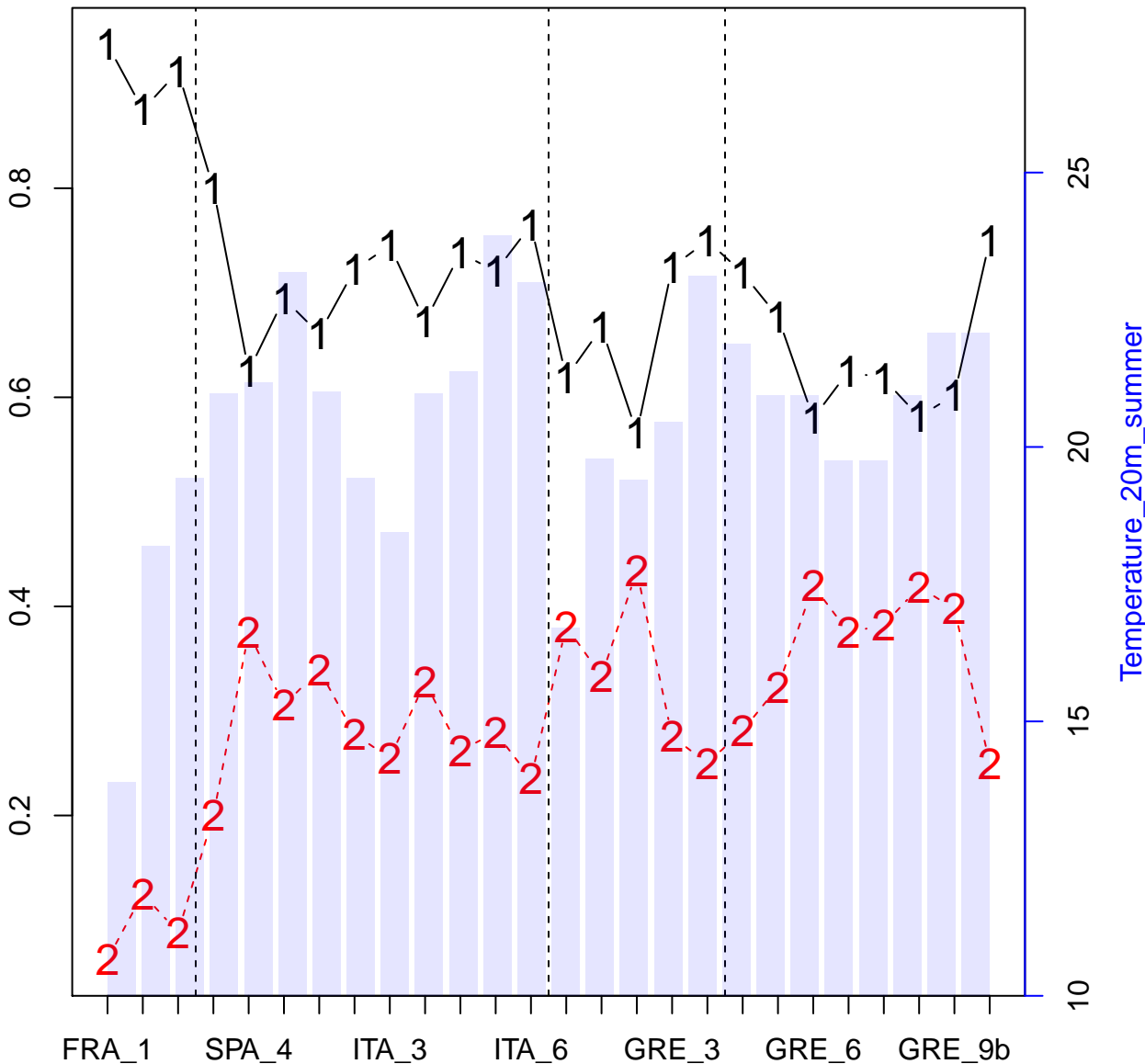
ATL

WMED

ION

AEG

allele frequency



BayEnv

SNP 598_34

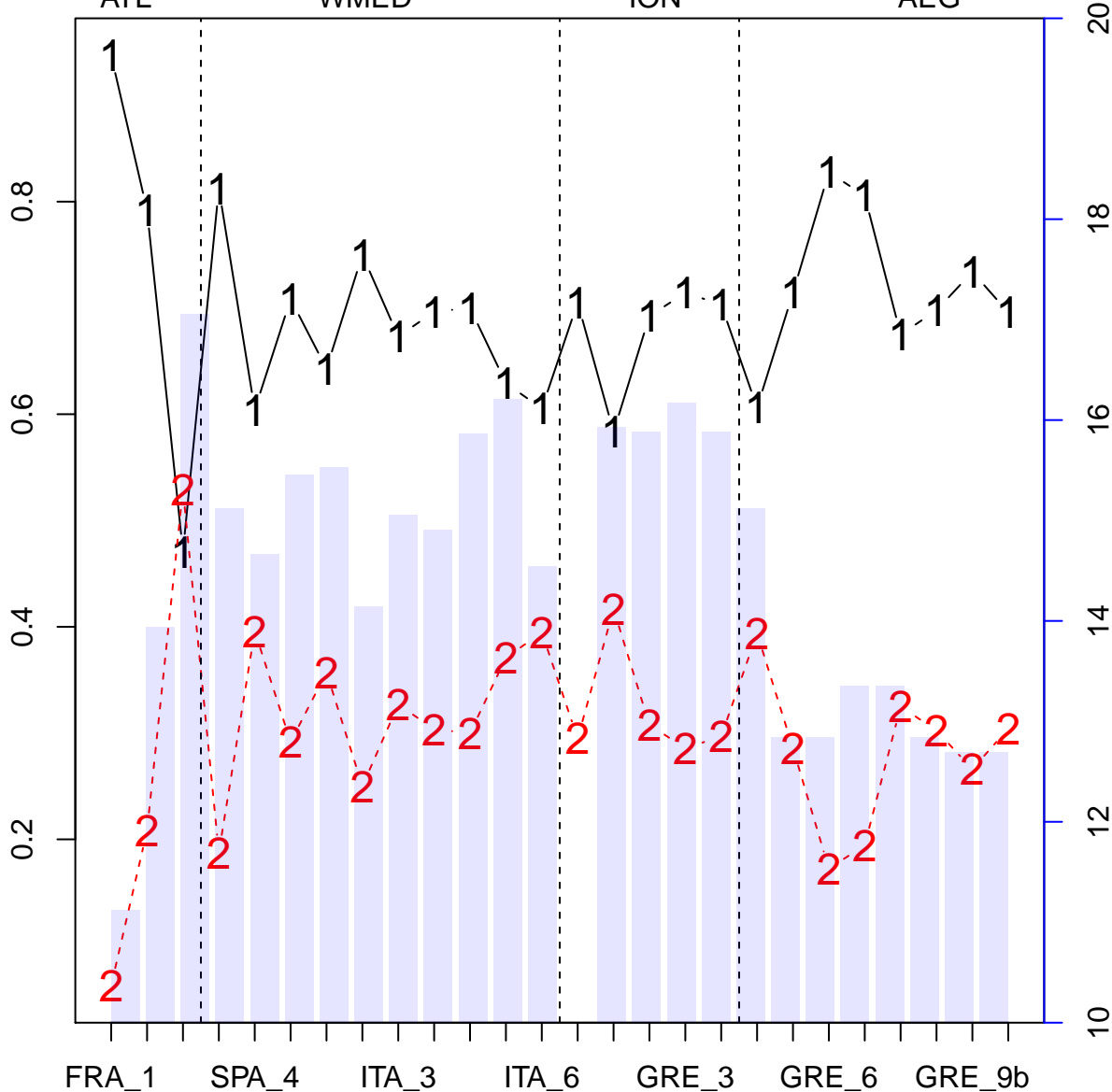
ATL

WMED

ION

AEG

allele frequency



Temperature_surface_winter

BayEnv

SNP 7325_58

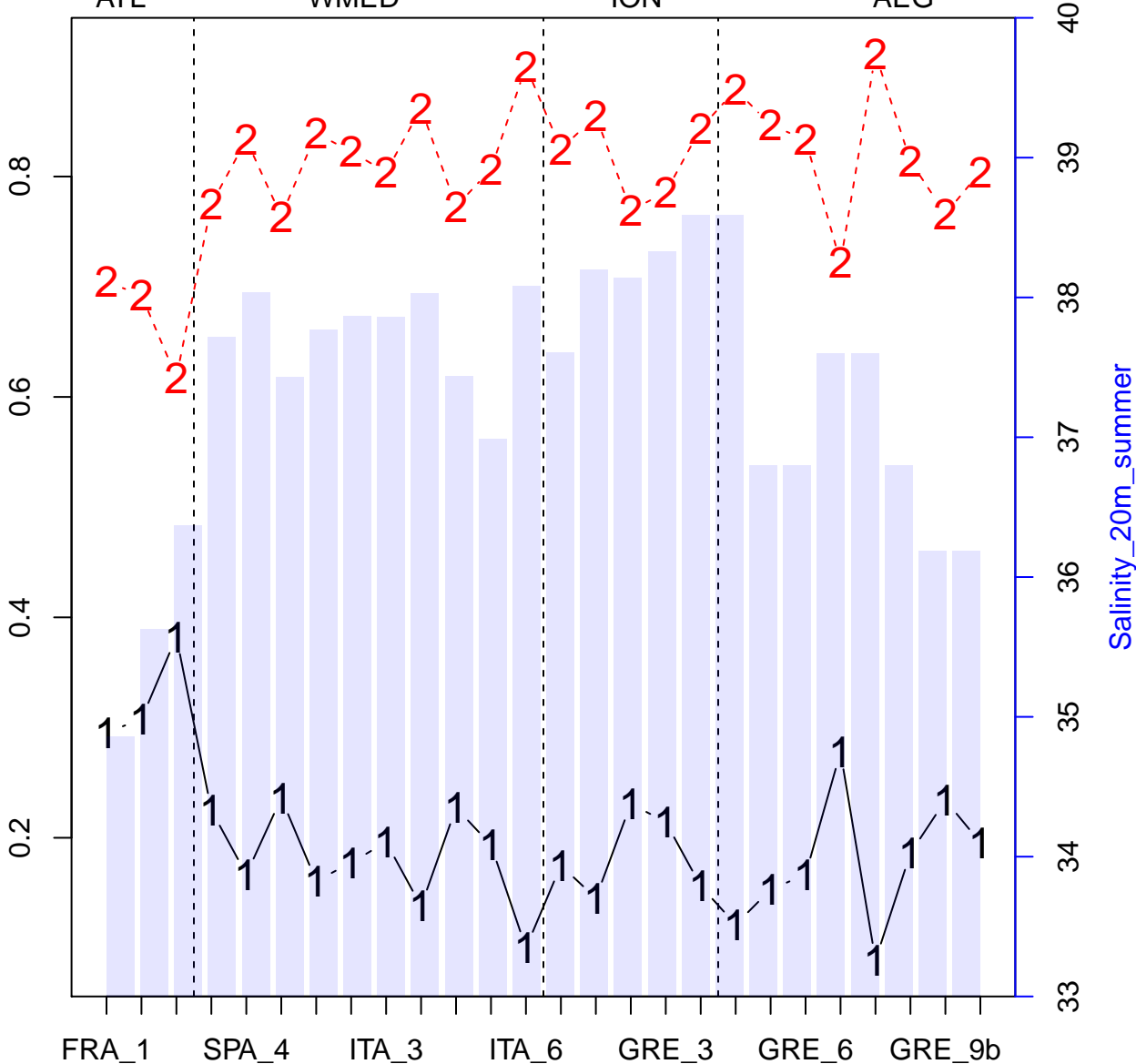
ATL

WMED

ION

AEG

allele frequency



Salinity_20m_summer

BayEnv

SNP 13398_81

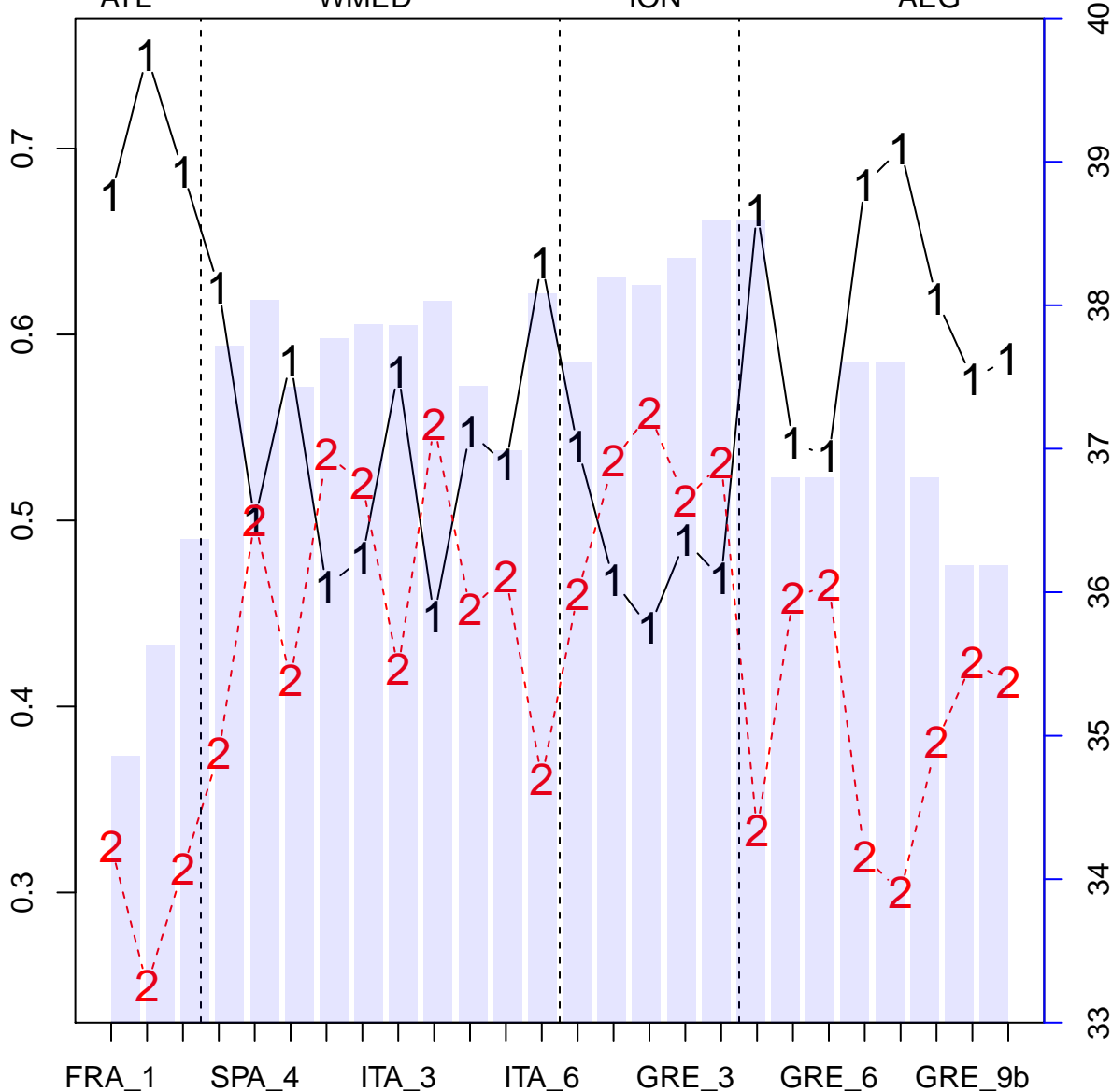
ATL

WMED

ION

AEG

allele frequency



Salinity_20m_summer

40
39
38
37
36
35
34
33

BayEnv

SNP 5133_78

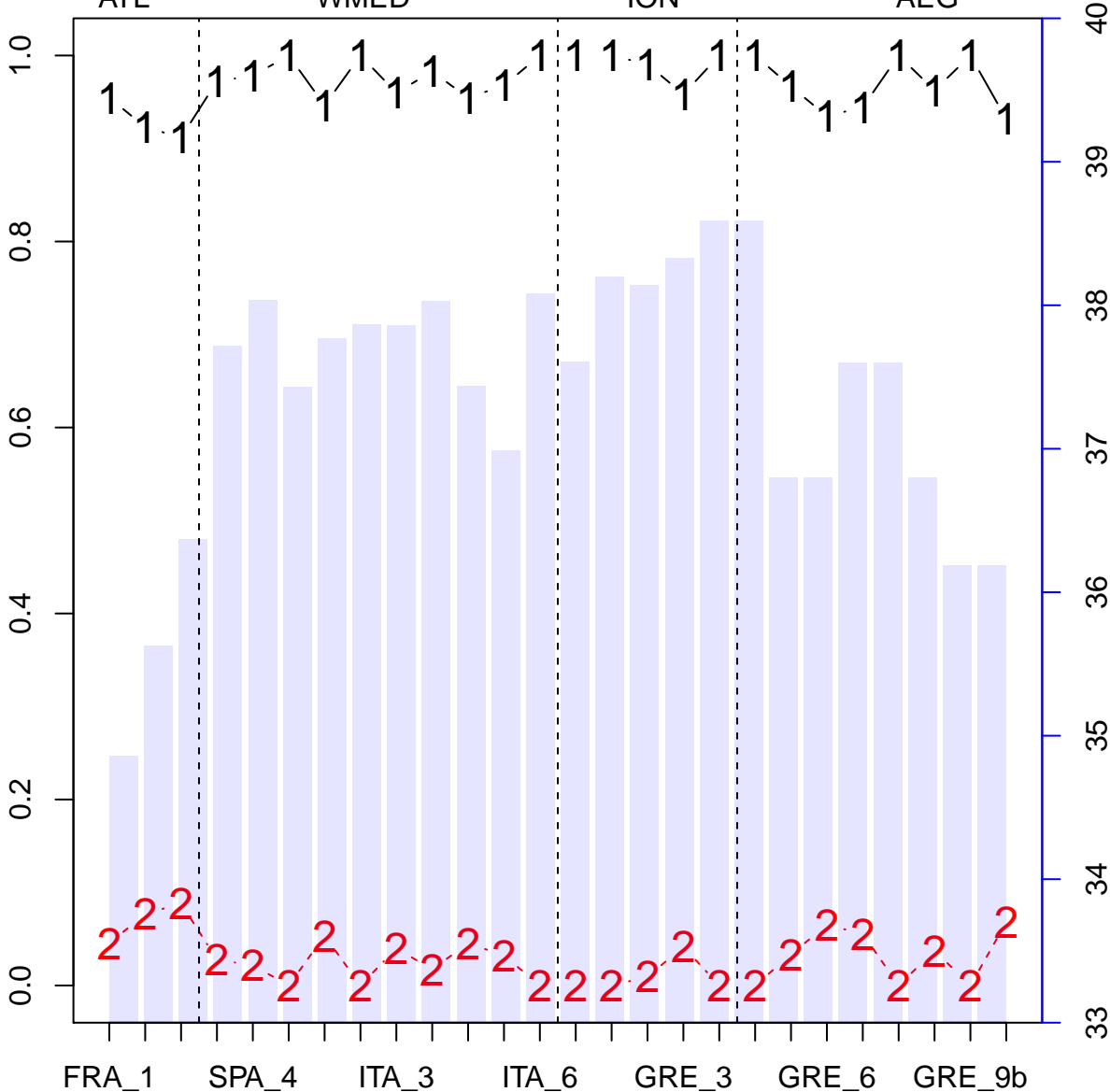
ATL

WMED

ION

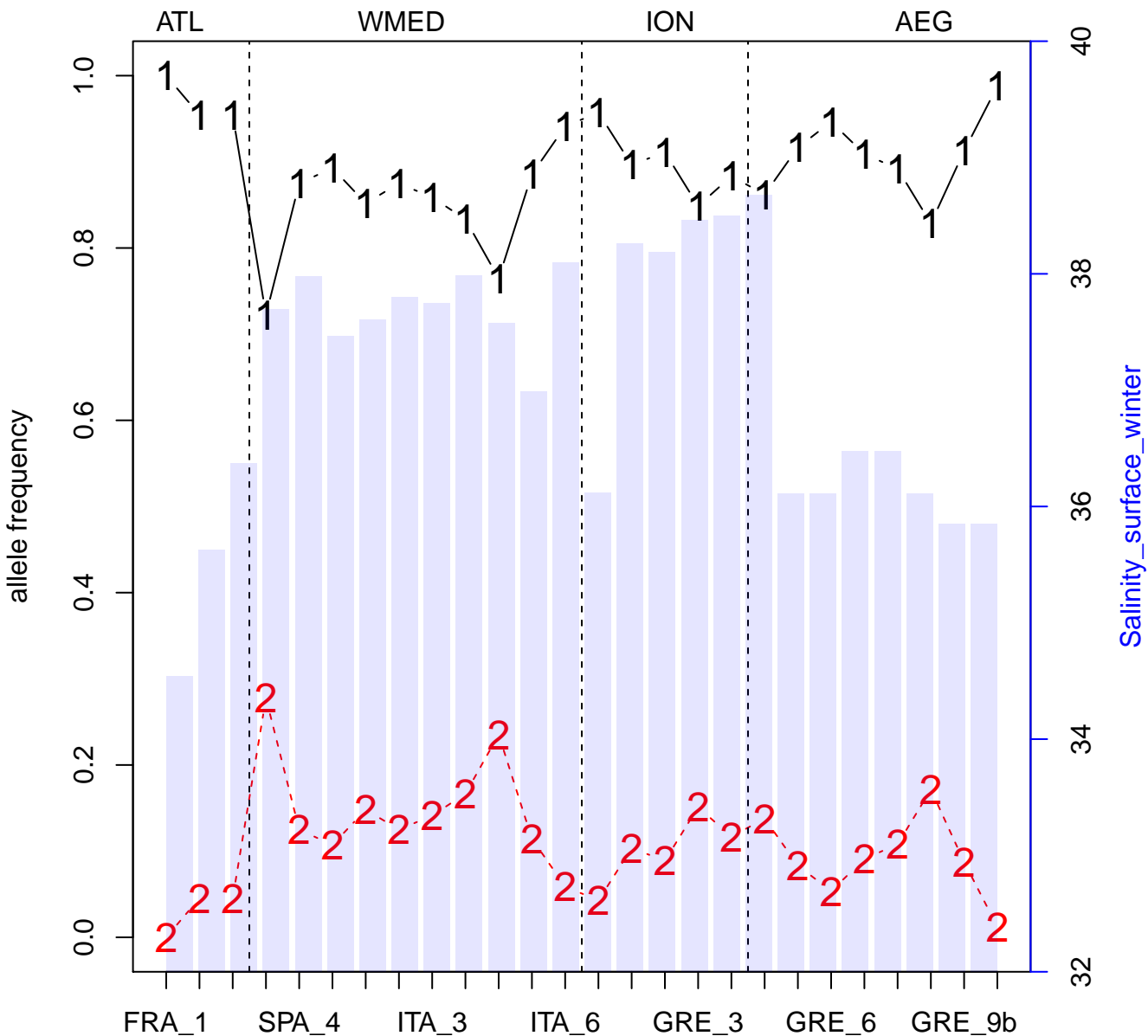
AEG

allele frequency



BayEnv

SNP 4135_65



BayEnv

SNP 960_86

ATL

WMED

ION

AEG

allele frequency

0.8
0.6
0.4
0.2

40
38
36
34
32

Salinity_surface_winter

FRA_1

SPA_4

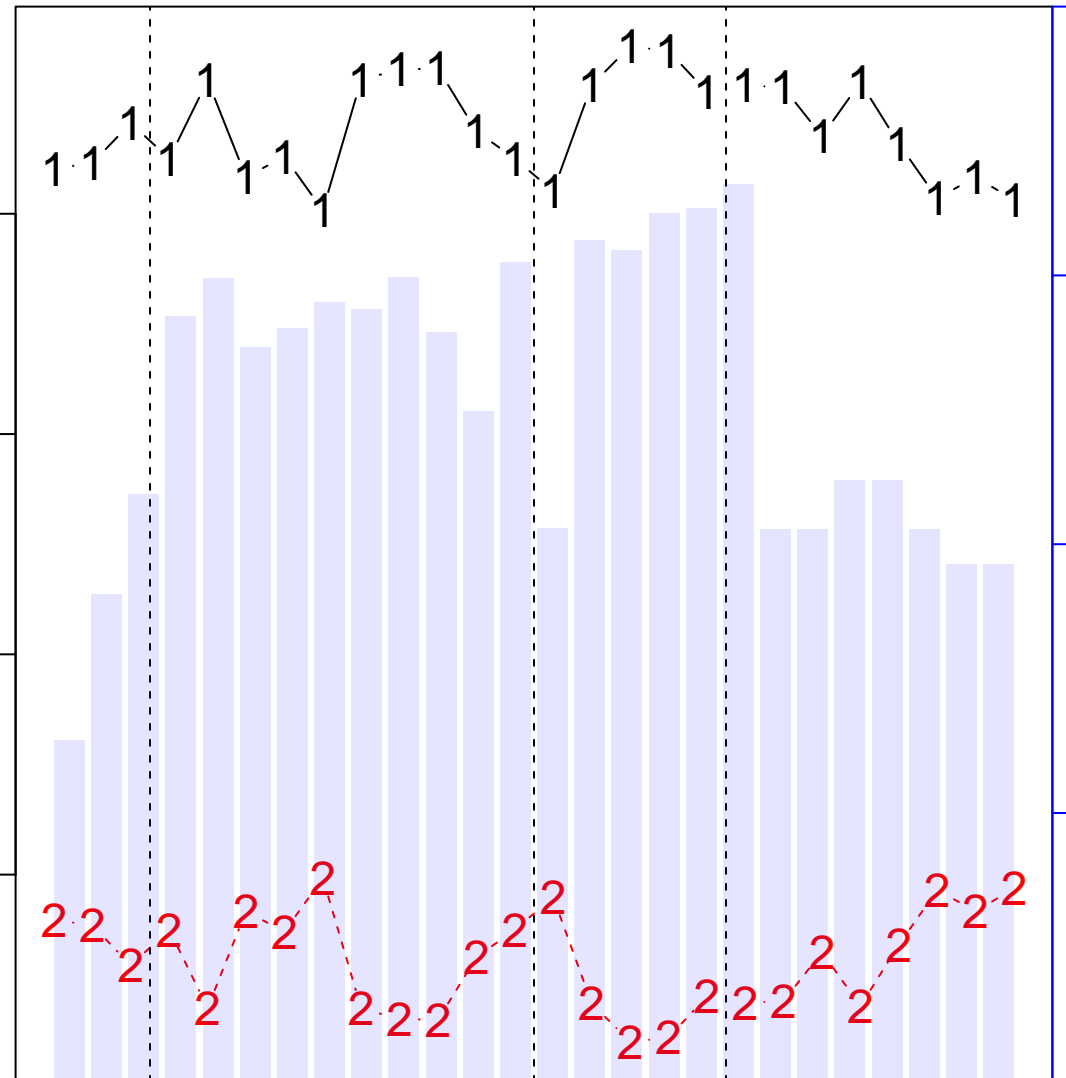
ITA_3

ITA_6

GRE_3

GRE_6

GRE_9b



BayEnv

SNP 1983_10

ATL

WMED

ION

AEG

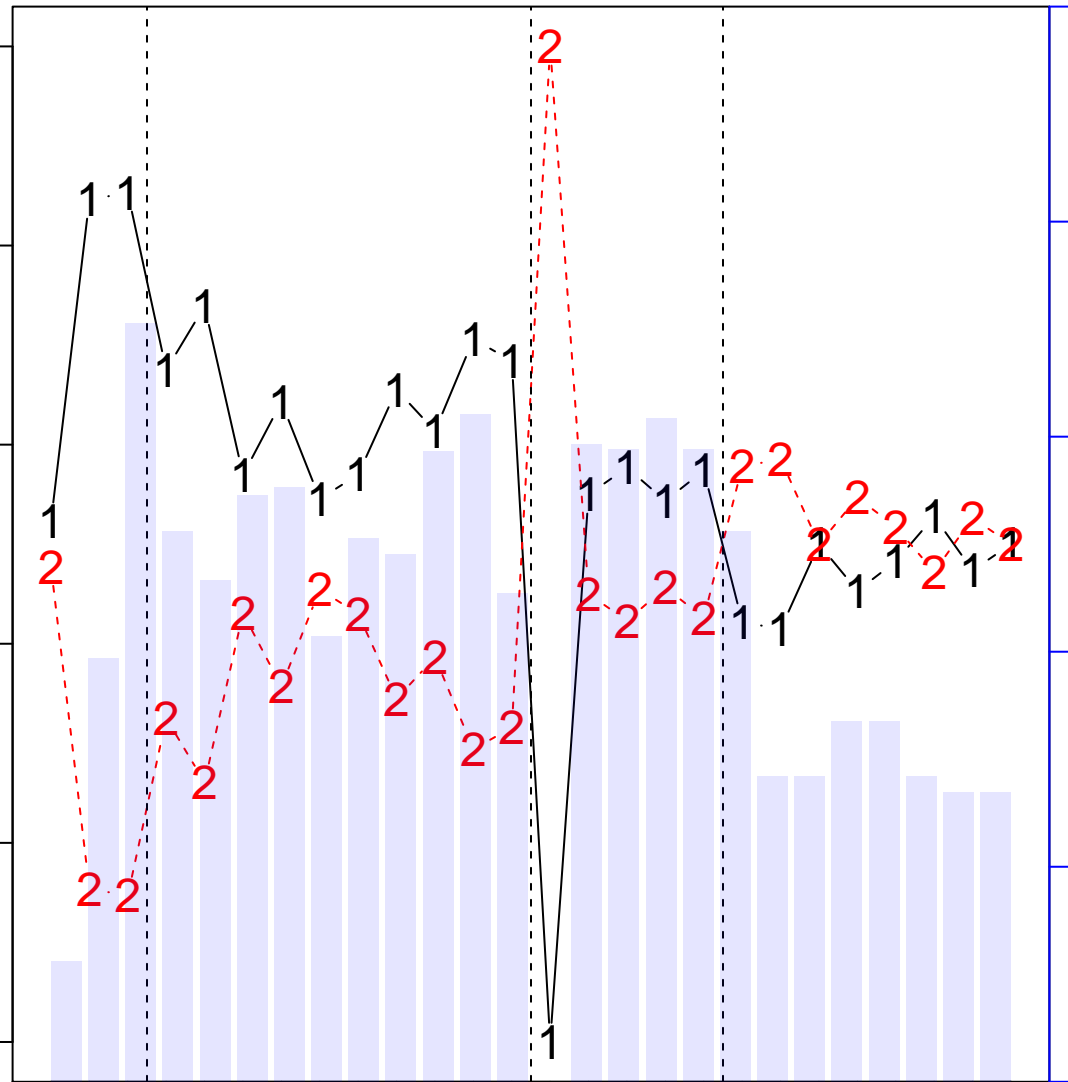
allele frequency

1.0
0.8
0.6
0.4
0.2
0.0

20
18
16
14
12
10

Temperature_surface_winter

FRA_1 SPA_4 ITA_3 ITA_6 GRE_3 GRE_6 GRE_9b



BayEnv

SNP 1194_70

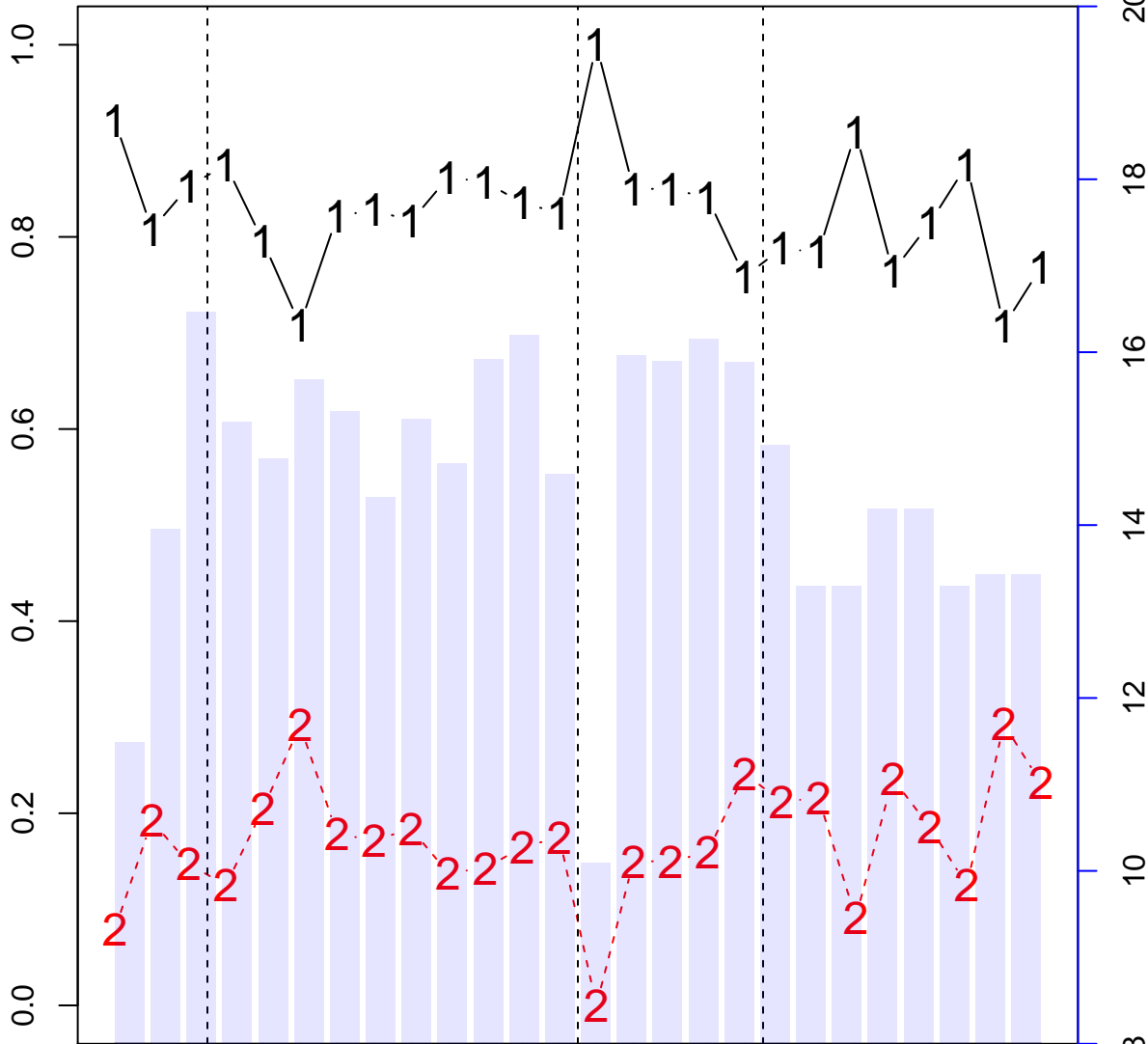
ATL

WMED

ION

AEG

allele frequency



Temperature_20m_winter

1.0
0.8
0.6
0.4
0.2
0.0
20
18
16
14
12
10
8

FRA_1 SPA_4 ITA_3 ITA_6 GRE_3 GRE_6 GRE_9b