



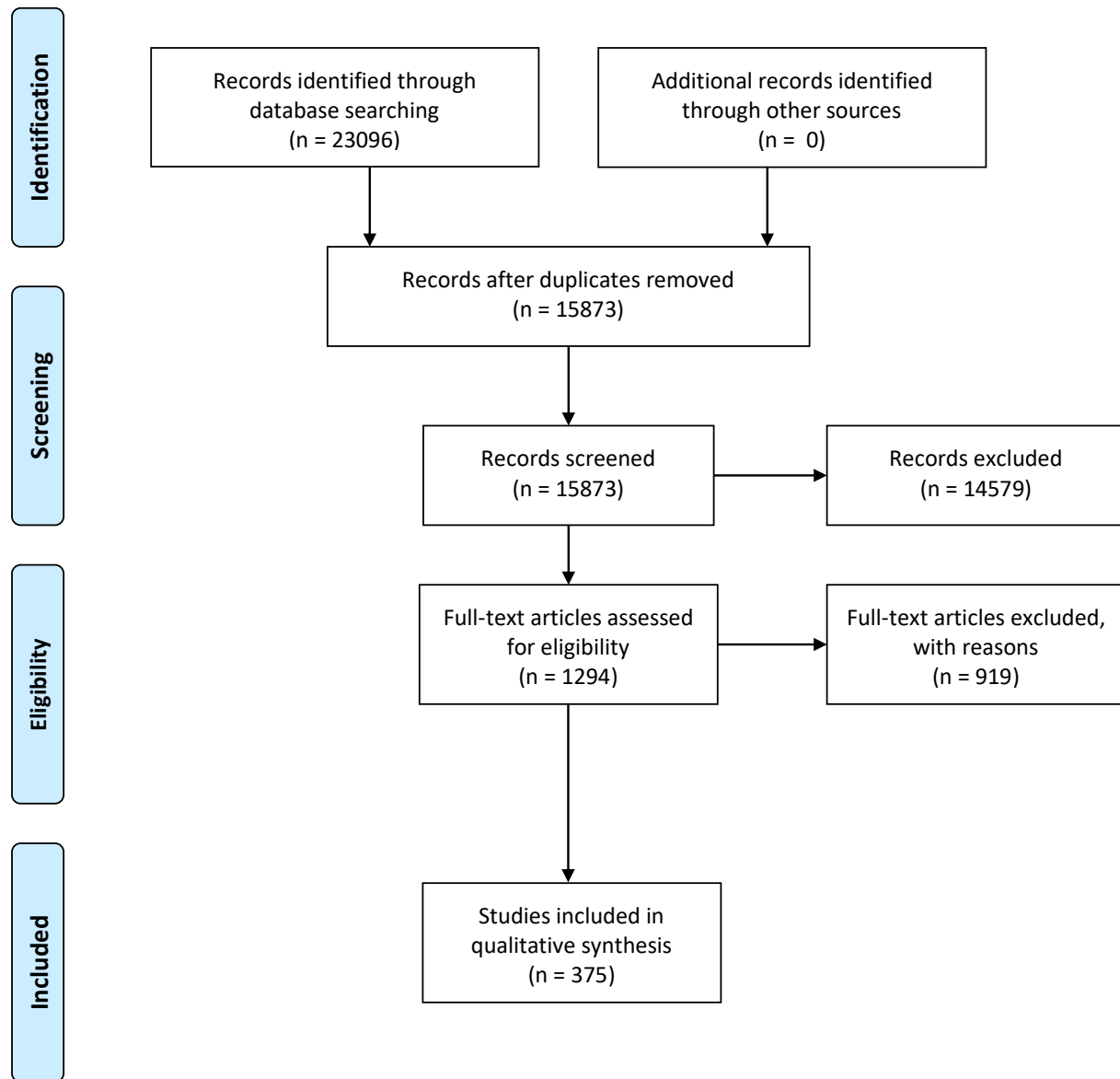
PRISMA 2009 Flow Diagram

MEDLINE and EMBASE search terms:

- ((Ischaemia OR Ischemia) AND (Bowel OR Colon OR Gut)) OR Ischemic Colitis OR Ischaemic Colitis OR ((Ischemic OR Ischaemic) AND Colitis)

Limits:

- Pre-1989 excluded
- English language
- Human research



From: Moher D, Liberati A, Tetzlaff J, Altman DG, The PRISMA Group (2009). Preferred Reporting Items for Systematic Reviews and Meta-Analyses: The PRISMA Statement. PLoS Med 6(7): e1000097. doi:10.1371/journal.pmed1000097

For more information, visit www.prisma-statement.org.