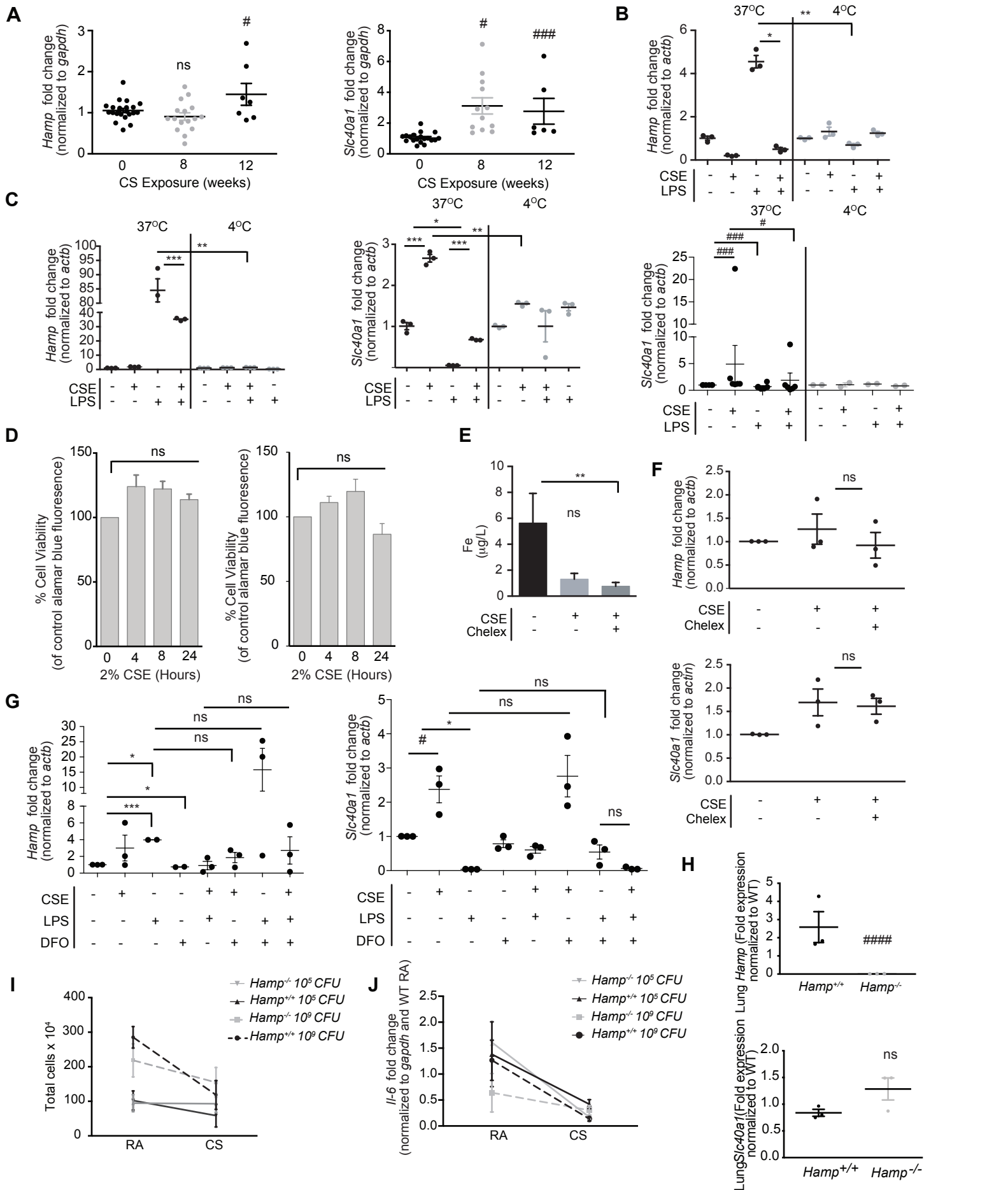


Supplemental Figure 1. (a) Percentage hematocrit (b), hemoglobin in grams per deciliter, (c) red blood cell counts in millions of cells per microliter (n = 5 per group) and (d) total iron in serum (RA n = 10, CS n = 9) of WT mice exposed to RA or CS (8weeks). (e) Kidney (pg/ml) by ELISA, (n = 8 per group) and (f) liver tissue levels of EPO (pg/ml) by ELISA, (n = 4 per group) of WT mice exposed to RA or CS (8 weeks). (g) *Gdf15* and (h) *twsg1* mRNA expression levels in the bone marrow (n = 8 per group) of WT mice exposed to RA or CS (8 weeks). All data are mean \pm s.e.m. ##P < 0.01 by student's unpaired t-test. *P < 0.05, **P < 0.01 by one-way ANOVA with Bonferroni correction. n.s., not significant.



Supplemental Figure 2. (a) *Hamp* mRNA (left, 0 weeks n = 22, 8 weeks n = 16, 12 weeks n = 7) and *Slc40a1* mRNA (right, 0 weeks n = 19, 8 weeks n = 12, 12 weeks n = 6) levels in bronchoalveolar lavage (BAL) alveolar macrophages (AMs) from WT mice exposed to CS (8 and 12 weeks). (b) *Hamp* mRNA (top) and *Slc40a1* mRNA (bottom) expression (n = 4-5 per group) of primary AMs isolated from wildtype mice treated with 2% CSE (4 hours) and 100 ng/mL LPS (6 hours) incubated at either 37°C or 4°C. (c) *Hamp* mRNA (left) and *Slc40a1* mRNA (right) expression in BMDMs isolated from wildtype mice treated with 2% CSE (8 and 24 hours) and 100 ng/mL LPS (6 hours) incubated at either 37°C or 4°C. (d) Cell viability (% of control untreated) of primary AMs (left) and BMDMs (right) isolated from wildtype mice treated with 2% CSE for 0, 4, 8 and 24 hours assessed using Alamar Blue. (e) Total iron in DMEM and CSE (in DMEM) that had either been untreated or treated with Chelex 100. (f) *Hamp* mRNA (top) and *Slc40a1* mRNA (bottom) expression of BMDMs isolated from wildtype mice treated with 2% CSE (24 hours) that had either been untreated or treated with Chelex 100 and (g) *Hamp* mRNA (left) and *Slc40a1* mRNA (right) expression of BMDMs isolated from wildtype mice treated with 2% CSE (24 hours) and 100 ng/mL LPS (6 hours) following pre-treatment with DFO. Data representative of 3 independent experiments. (h) *Hamp* (top) and *Slc40a1* (bottom) mRNA expression in lung tissue of *Hamp*^{+/+} and *Hamp*^{-/-} mice (n = 3 per group). (i) Total cell counts in BAL and (j) *il-6* mRNA expression levels of BAL AMs of *Hamp*^{+/+} and *Hamp*^{-/-} mice 48 hours post-infection of 10⁵ and 10⁹ (CFU) of *S. pneumoniae* after exposure to either room air (RA) or cigarette smoke (CS, 8 weeks). All data are mean \pm s.e.m. *P < 0.05, ****P < 0.001 by one-way ANOVA followed by Tukeys post-hoc test. #P < 0.05 #####P < 0.005 by student's unpaired t-test. n.s., not significant.