
**Preliminary clinical experience applying donor-derived cell-free DNA to
discern rejection in pediatric liver transplant recipients**

Authors: Dong Zhao, Tao Zhou, Yi Luo, Cheng Wu, Dongwei Xu, Chengpeng
Zhong, Wenming Cong, Qiang Liu, Jianjun Zhang, Qiang Xia

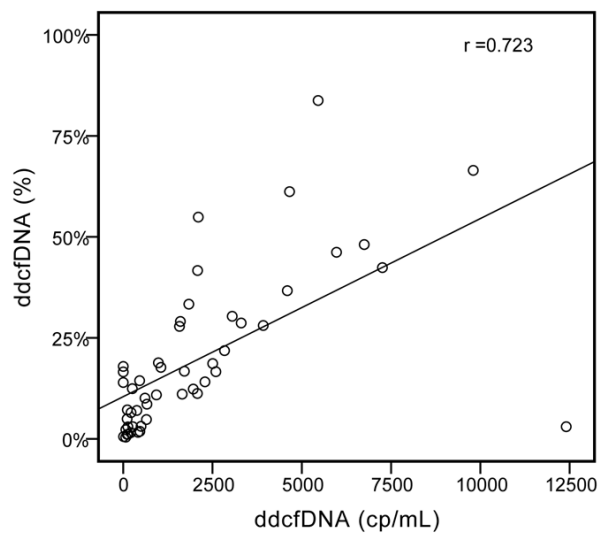


Figure S1. Correlations between dd-cfDNA (%) and dd-cfDNA (cp/ml). dd-cfDNA (%) was significantly associated with dd-cfDNA (cp/ml) with a spearman coefficient of 0.723 ($p < 0.001$).

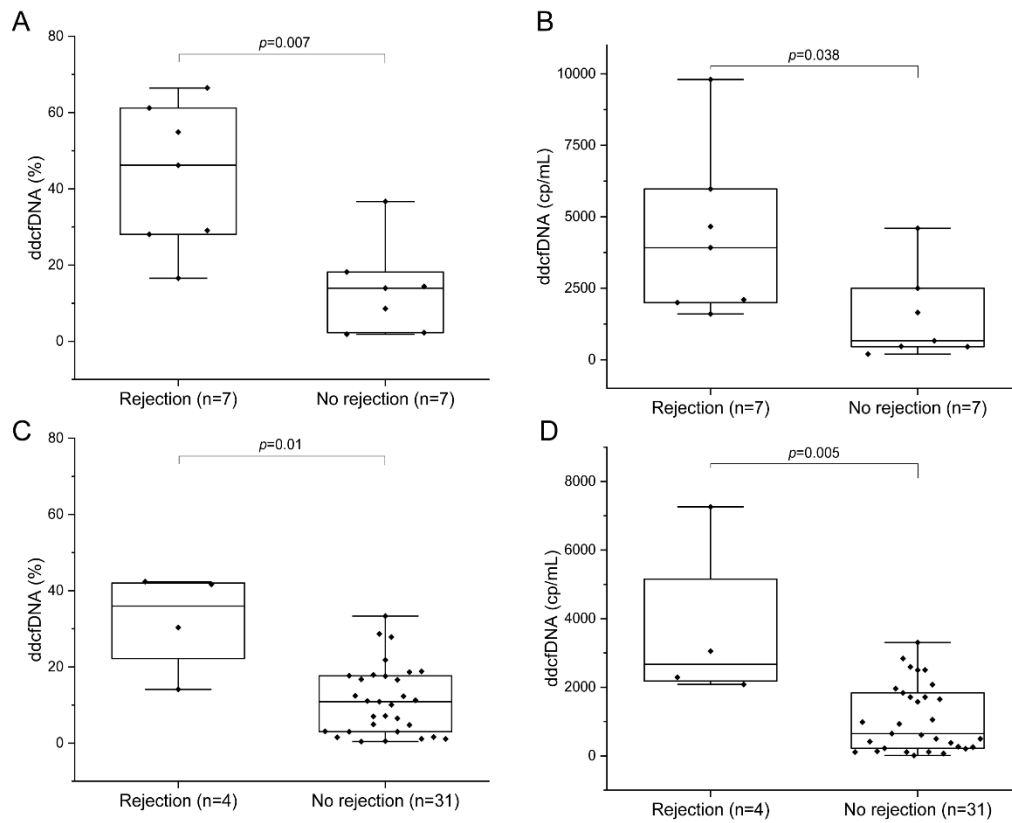


Figure S2. dd-cfDNA levels in rejection and no rejection patients within the whole liver group and the LLS group. Box plots of plasma dd-cfDNA% and plasma dd-cfDNA(cp/mL), horizontal line represents the median; bottom and top of each box represents 25th and 75th percentiles. Dots are individual values. (A) dd-cfDNA fraction (%) and (B) dd-cfDNA (cp/mL) in rejection and no rejection patients within whole liver group. (C) dd-cfDNA fraction (%) and (D) dd-cfDNA (cp/mL) in rejection and no rejection patients within LLS group. p values were determined by Mann-Whitney U test.

Suppl Table 1. Details for excluded patients

N	Reason
9	Not meeting inclusion criteria
10	Declined to participate
2	Technical failure (clotted/DNA degraded)
3	Samples not properly preserved
3	Multi-transfusion (too much foreign DNA)

Suppl Table2. Pediatric deceased donor characteristics(median/n)

Age(mons)	14.3
Gender(%male)	57.1
Warm ischemic time(mins)	11.3
Cold ischemic time(hrs)	8.2
Causes of death(n)	
Cerebrovascular/stroke	6
Anoxia	4
Head trauma	3
CNS tumor	1

mons, months; mins, minutes; hrs, hours; n, numbers