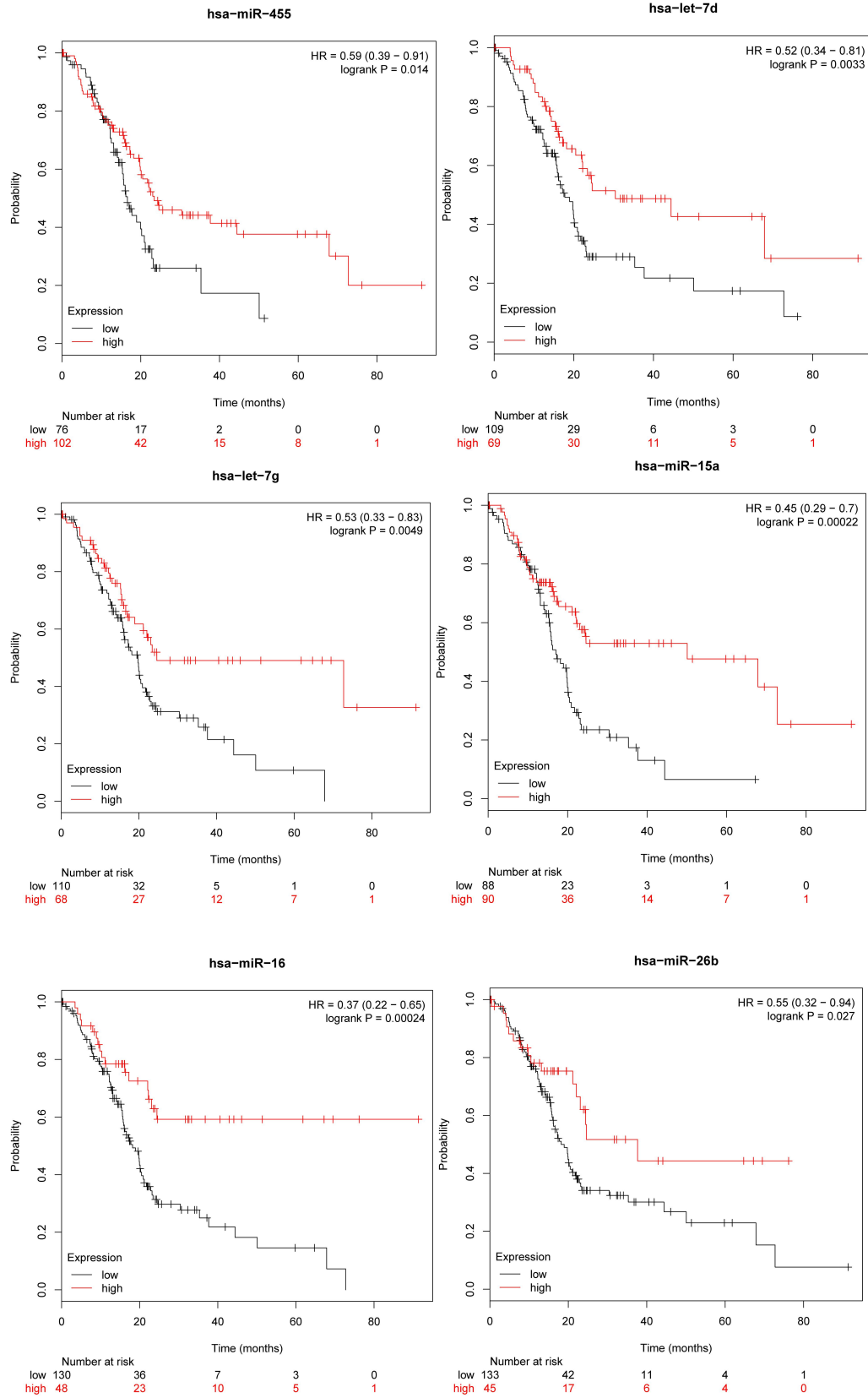
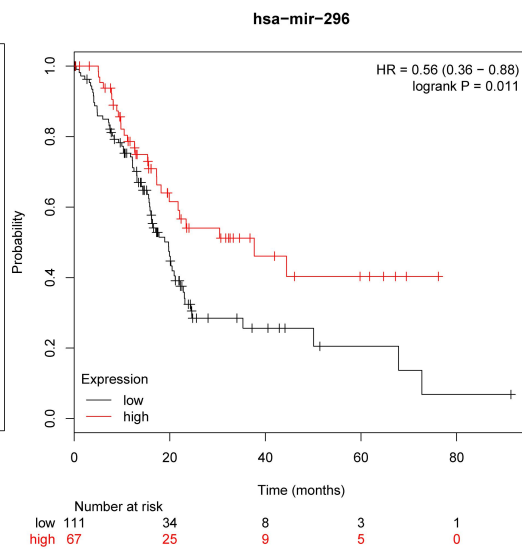
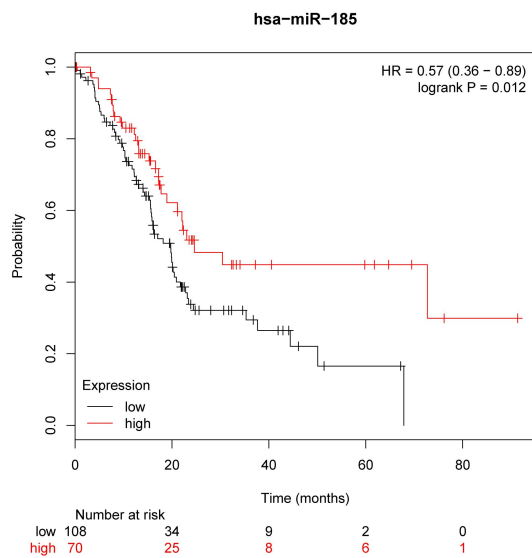
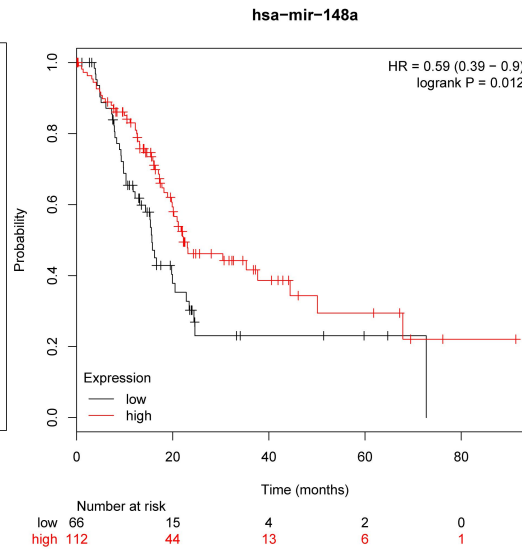
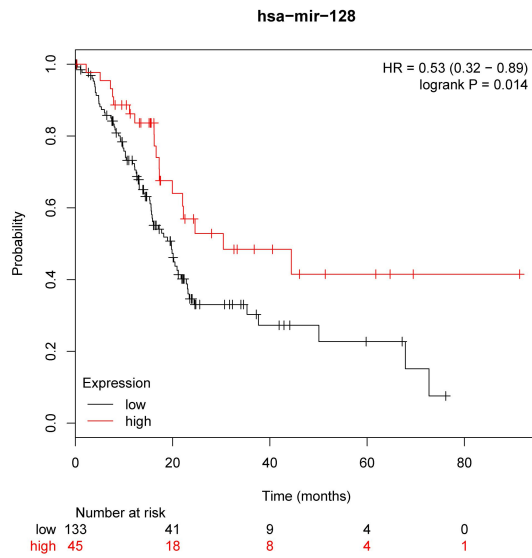
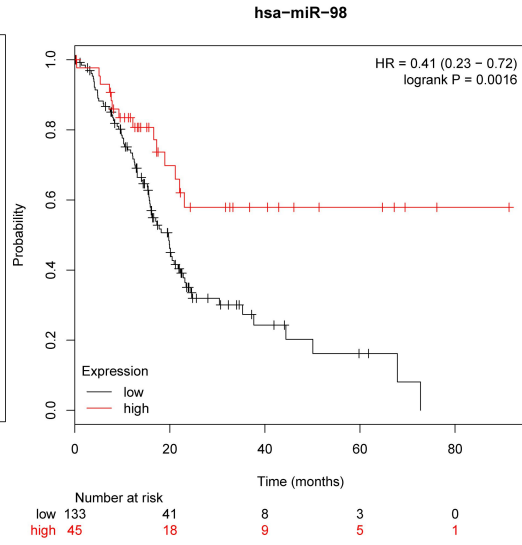
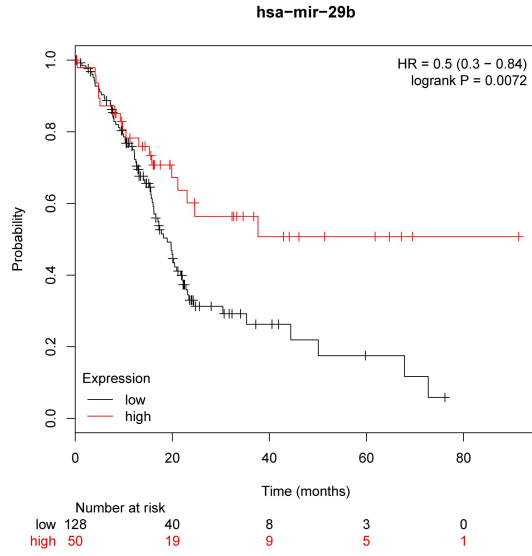
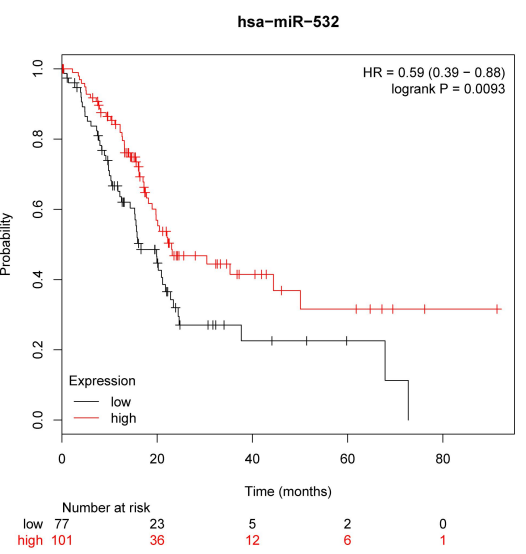
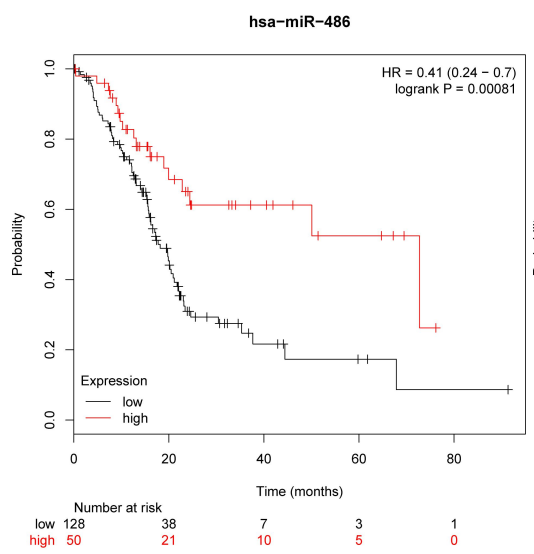
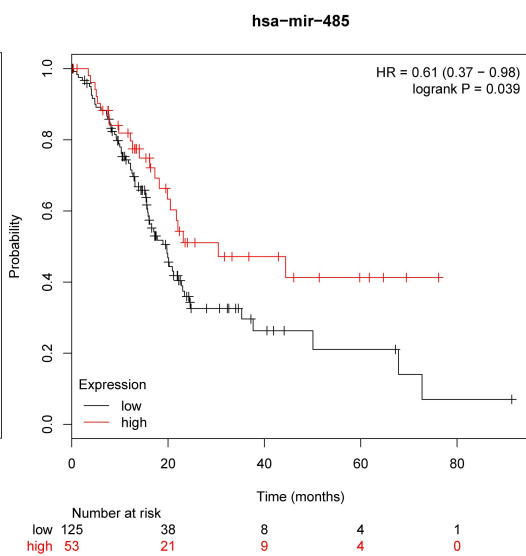
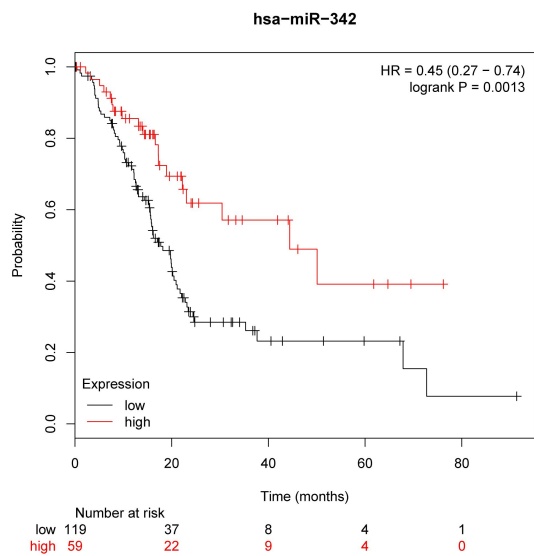
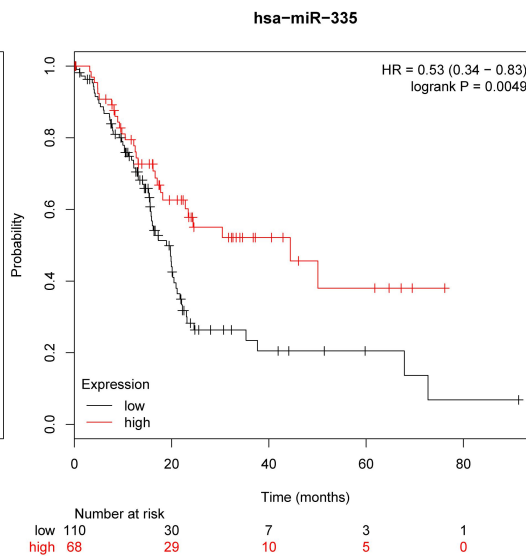
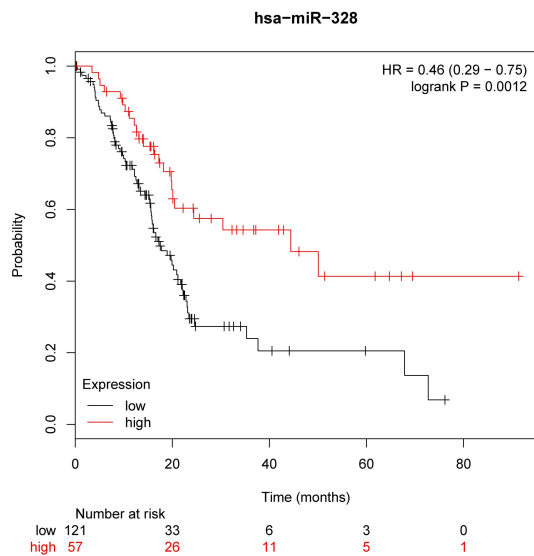
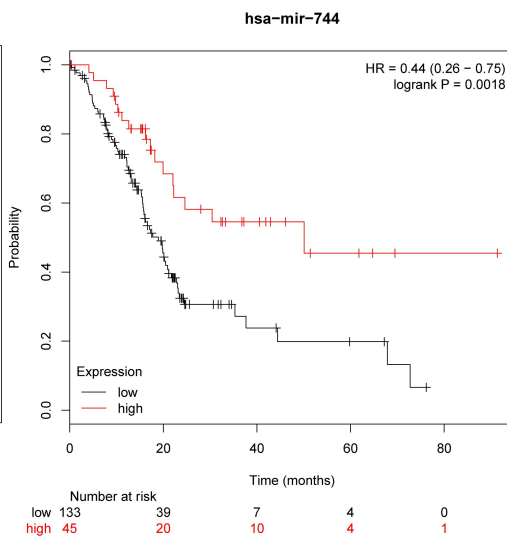
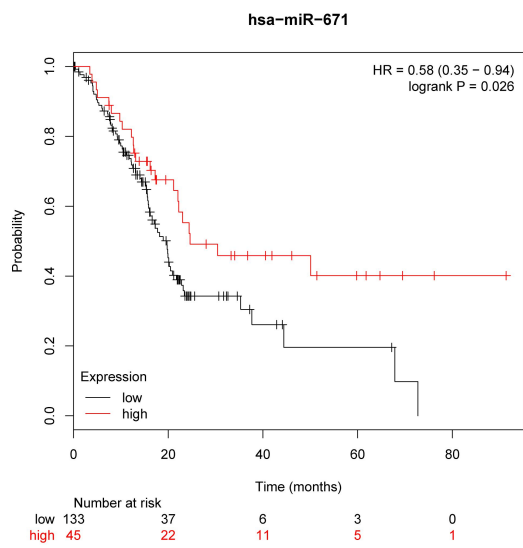
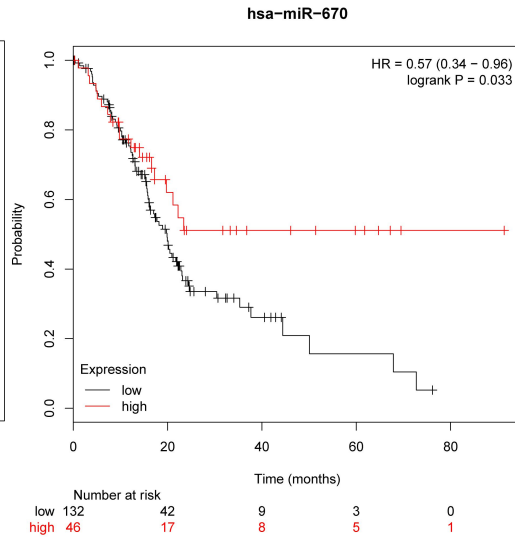
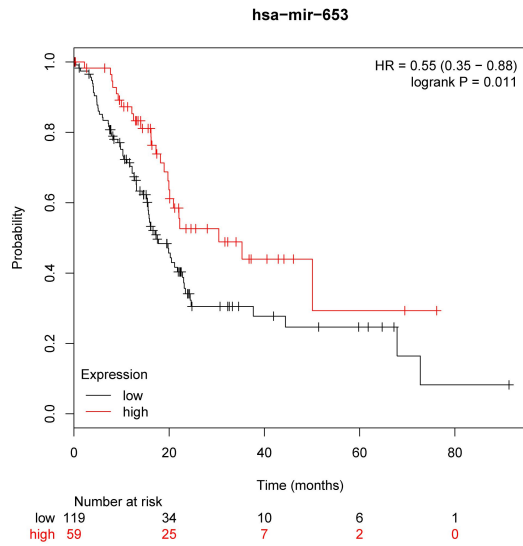
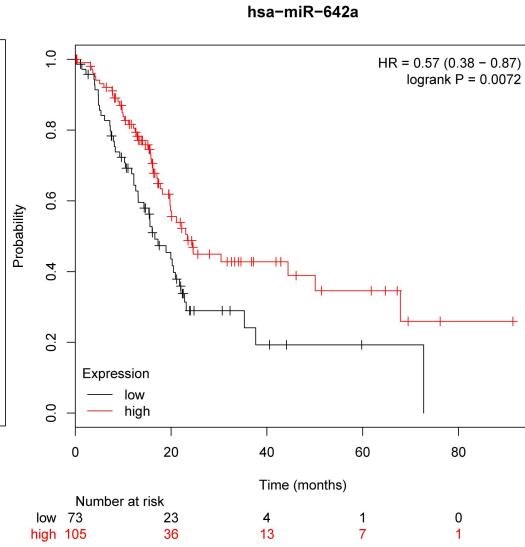
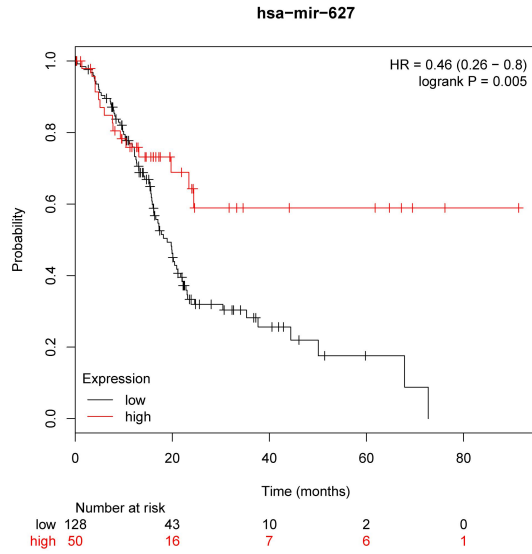


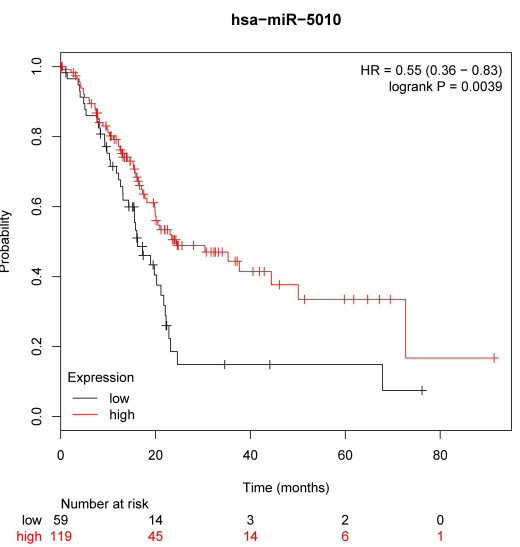
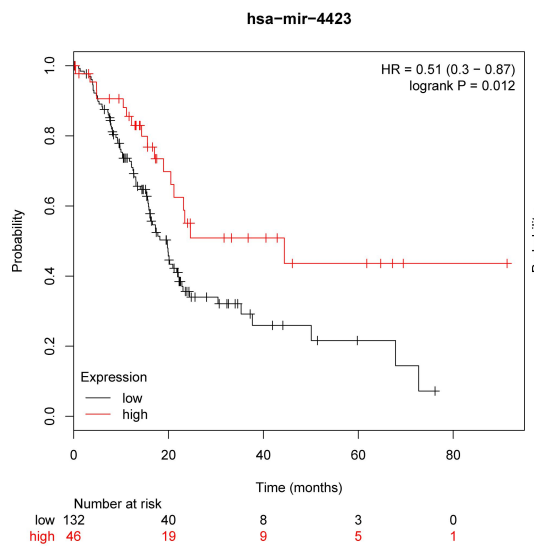
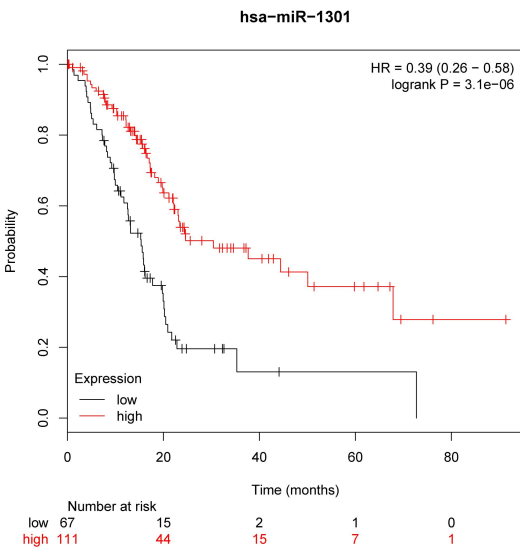
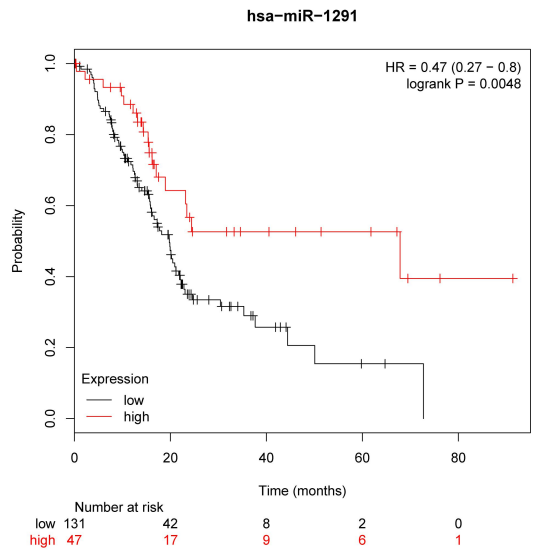
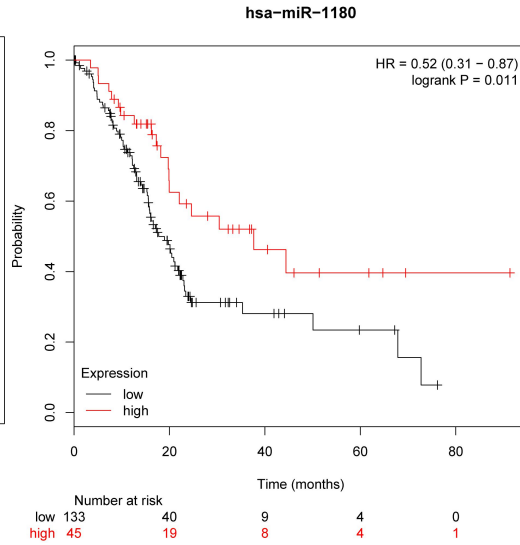
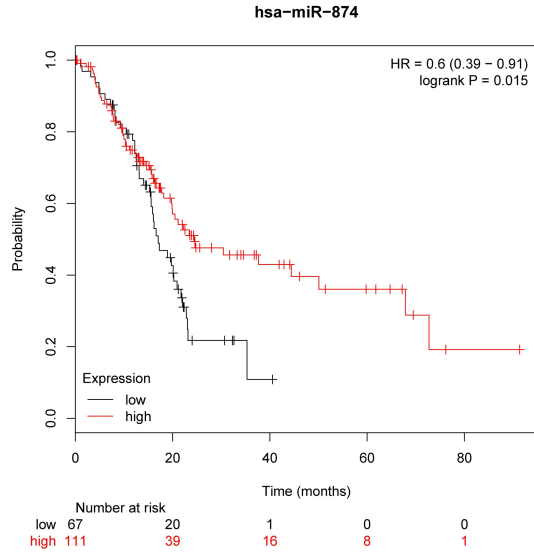
**Supplementary Figure S1** The survival analysis of target miRNAs of selected DEcircRNAs

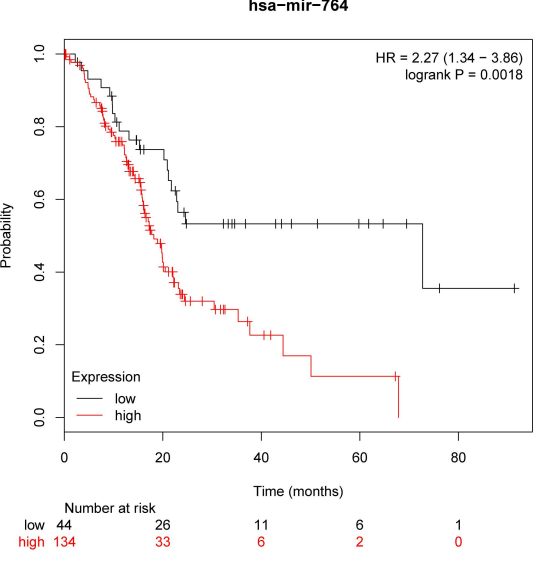
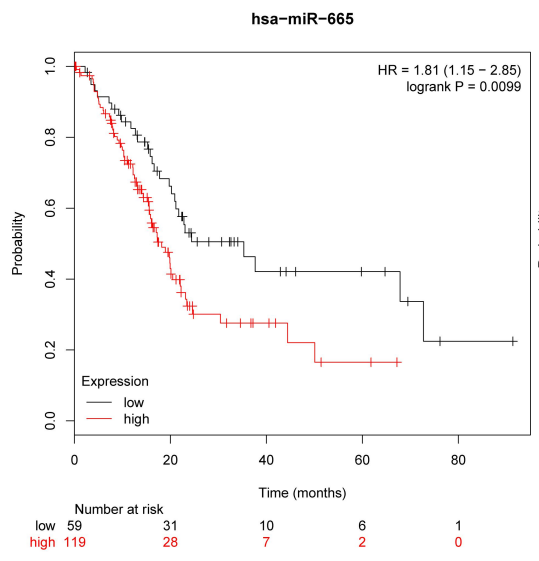
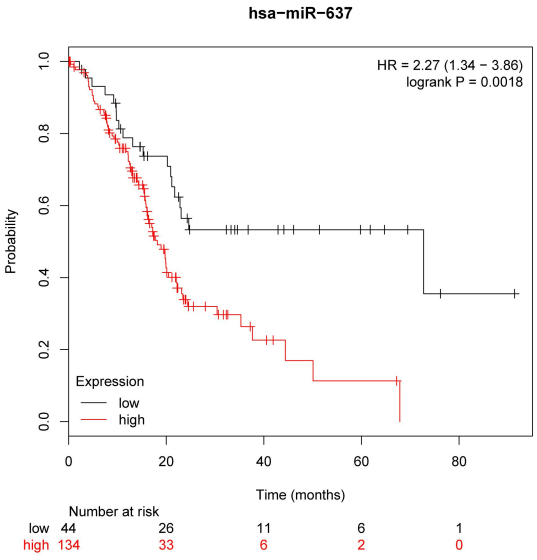
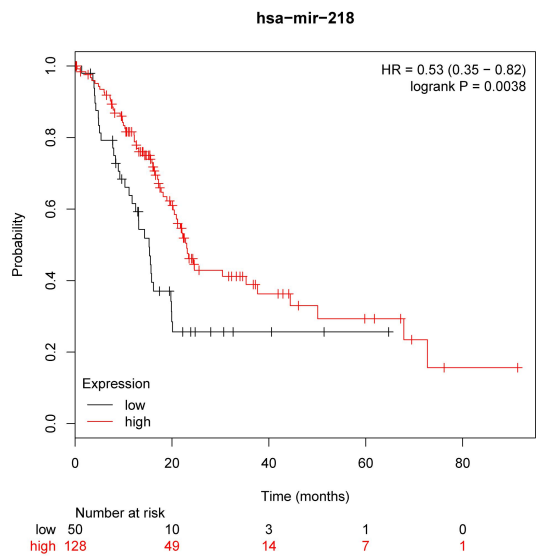
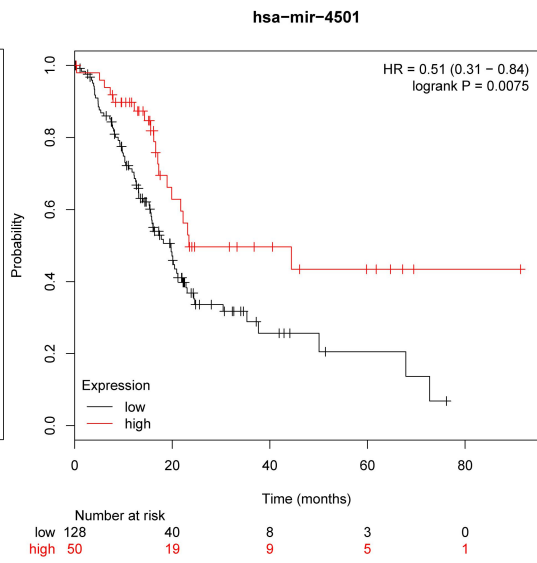
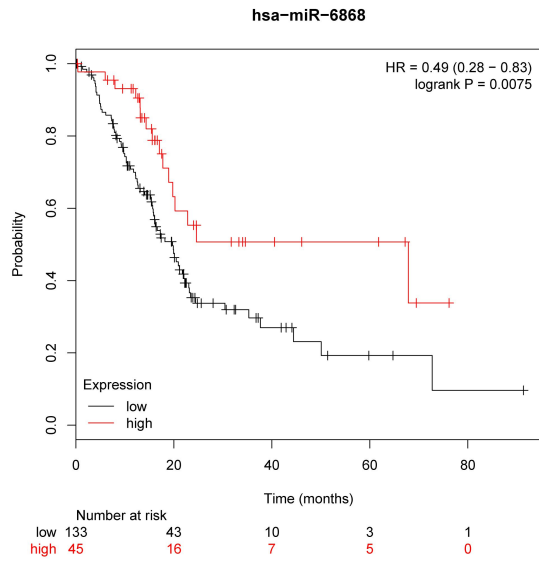




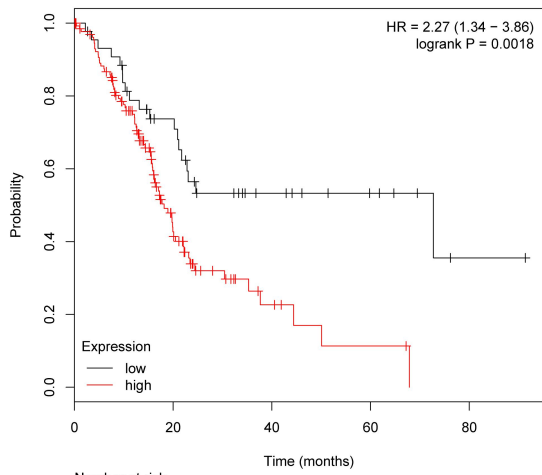






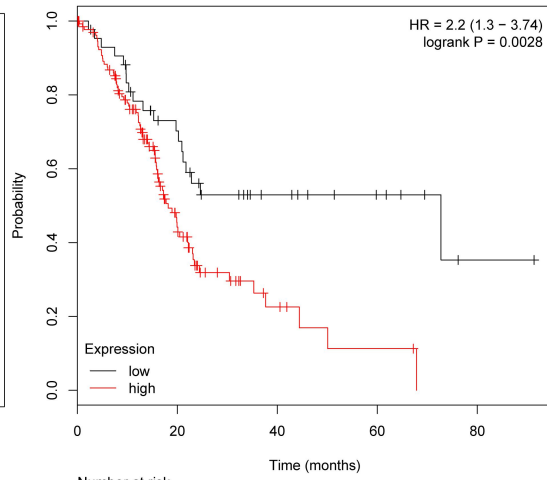


hsa-miR-1256



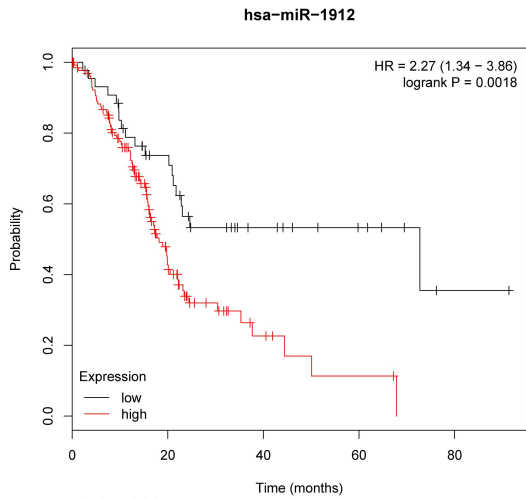
Number at risk		0	20	40	60	80
low	44	26	11	6	1	
high	134	33	6	2	0	

hsa-miR-1295b

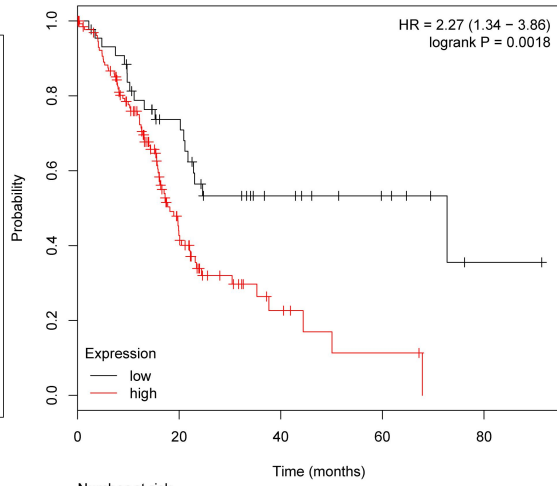


Number at risk		0	20	40	60	80
low	43	25	11	6	1	
high	135	34	6	2	0	

hsa-miR-1914

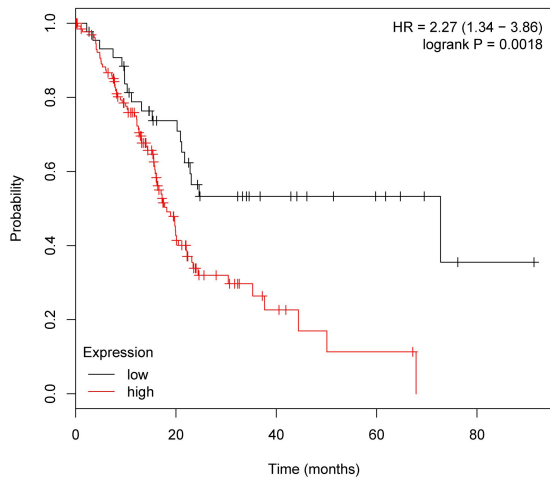


Number at risk		0	20	40	60	80
low	44	26	11	6	1	
high	134	33	6	2	0	



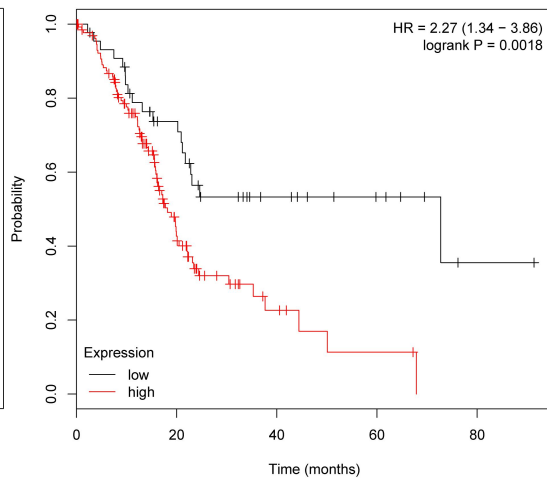
Number at risk		0	20	40	60	80
low	44	26	11	6	1	
high	134	33	6	2	0	

hsa-miR-2467

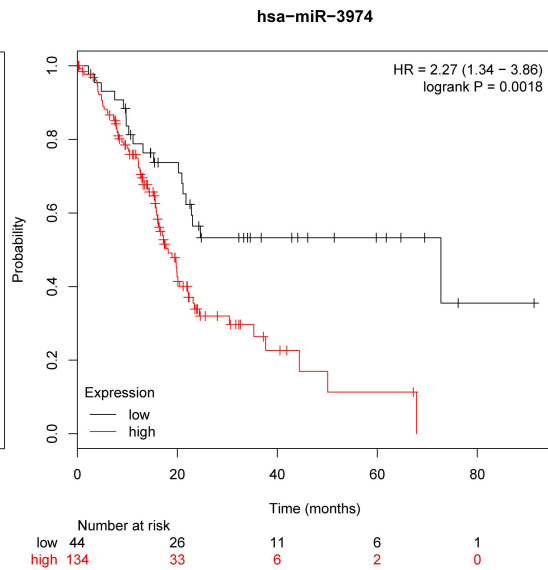
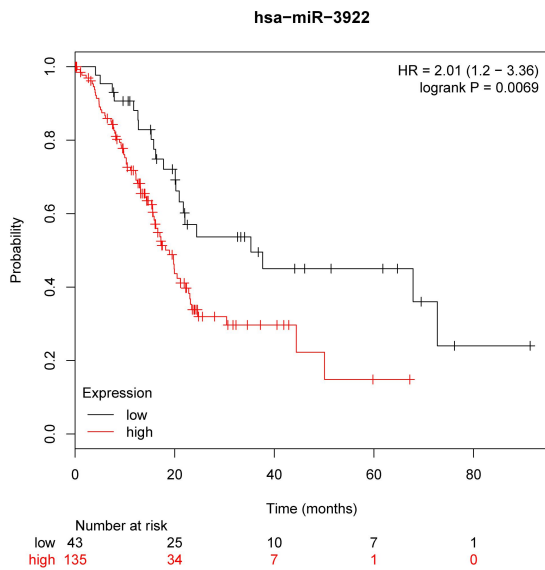
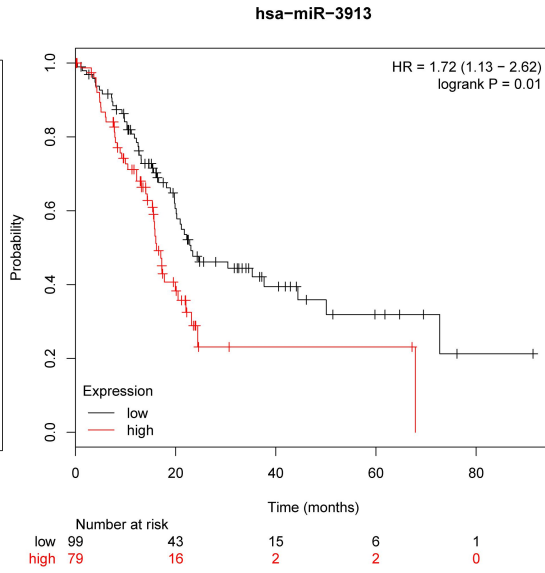
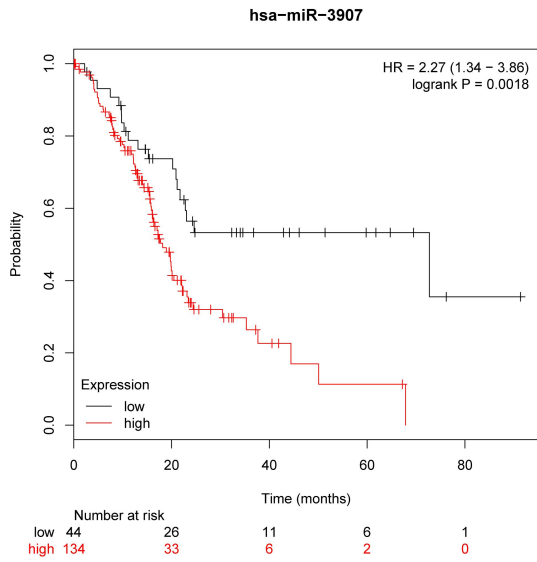
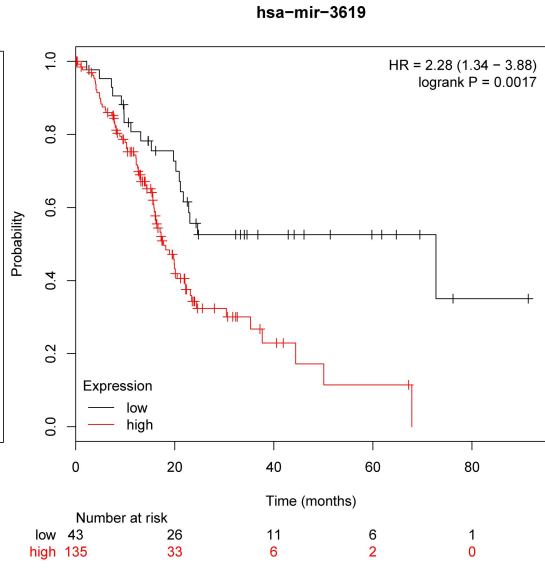
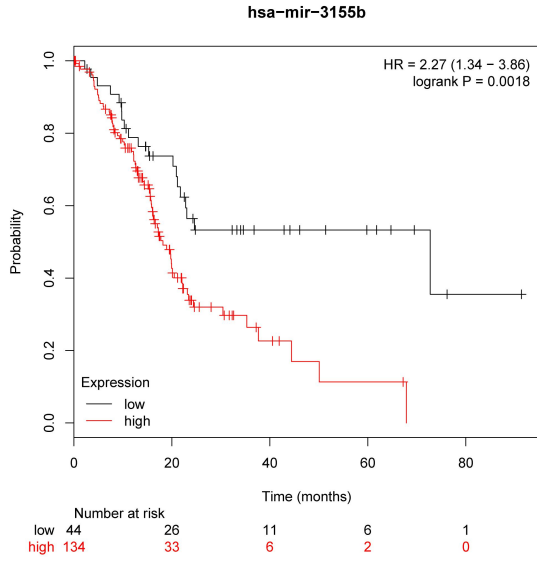


Number at risk		0	20	40	60	80
low	44	26	11	6	1	
high	134	33	6	2	0	

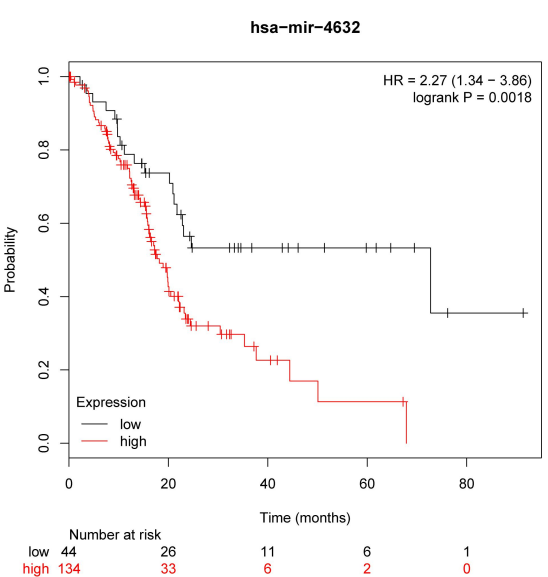
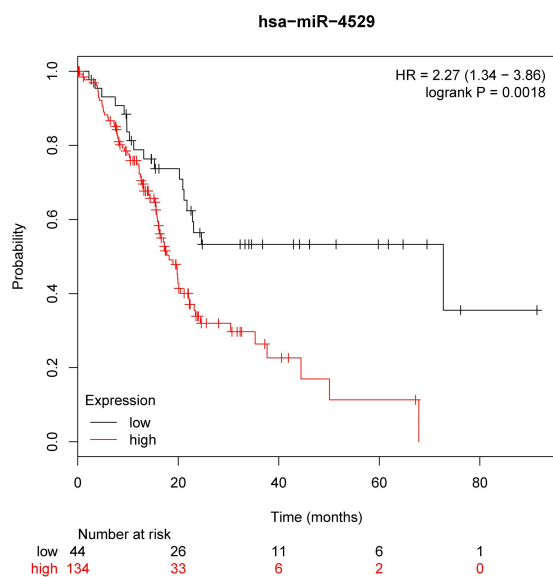
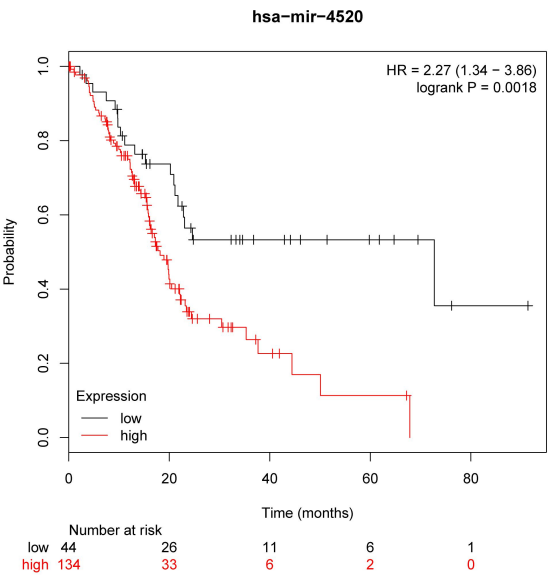
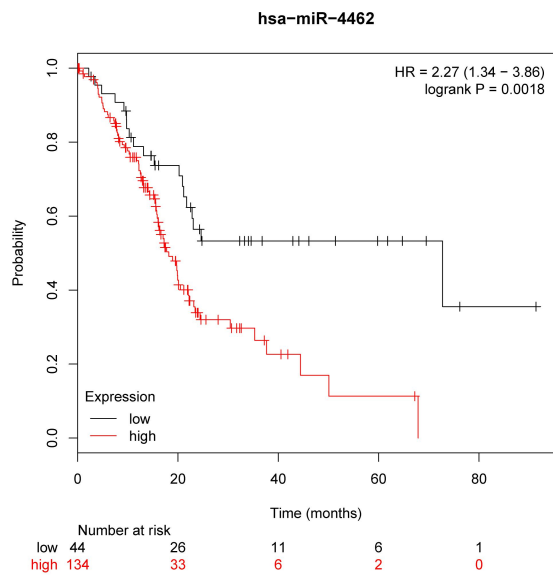
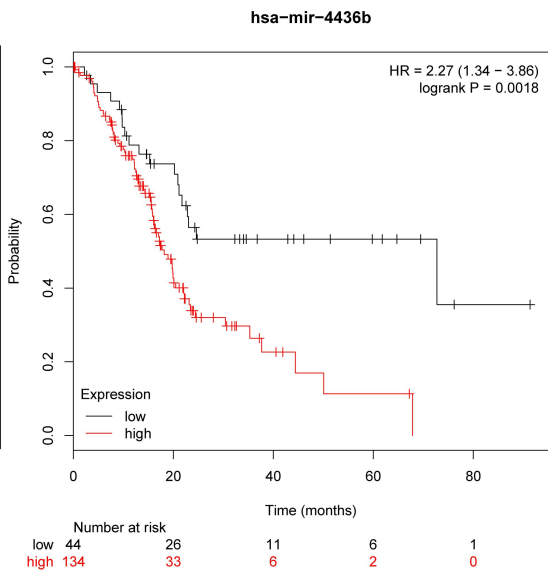
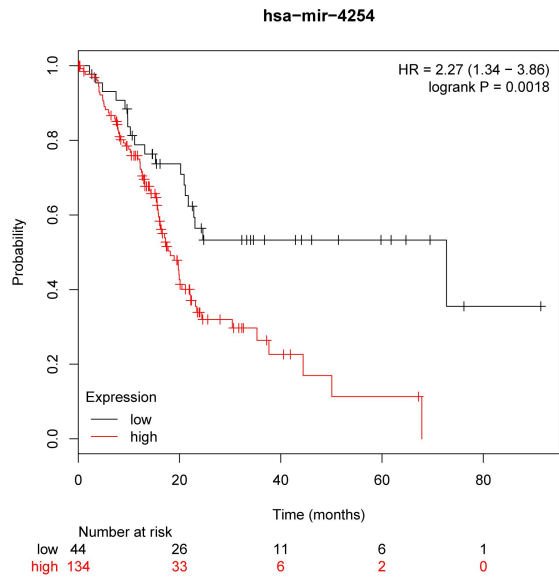
hsa-miR-3155a

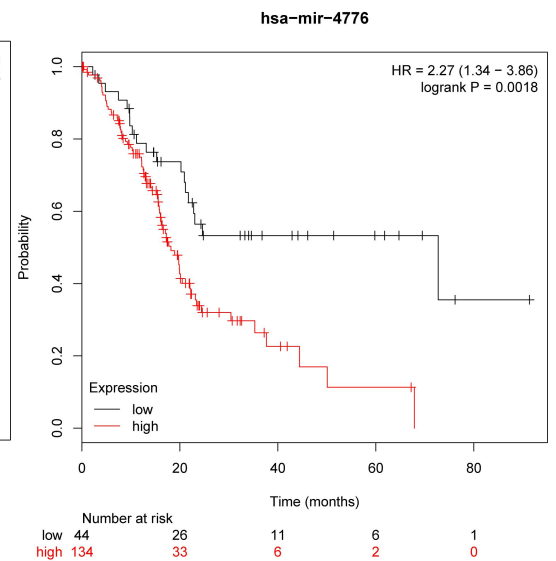
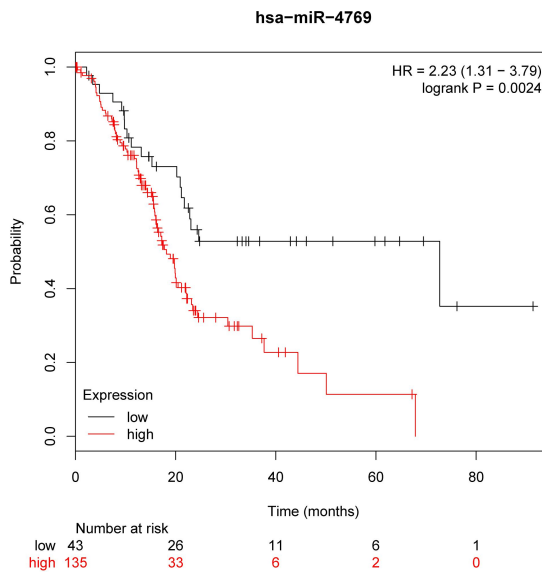
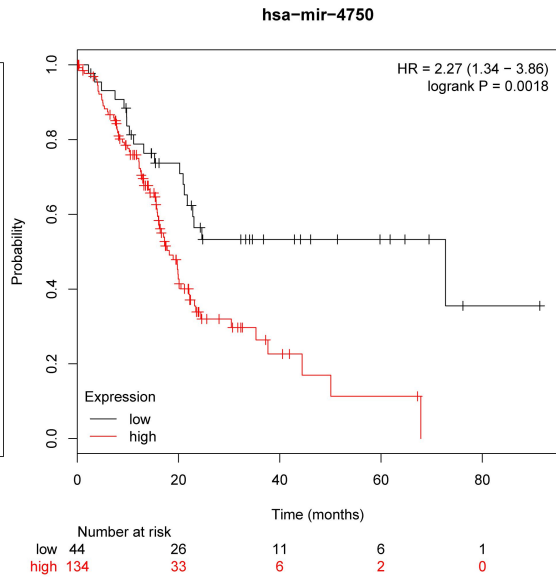
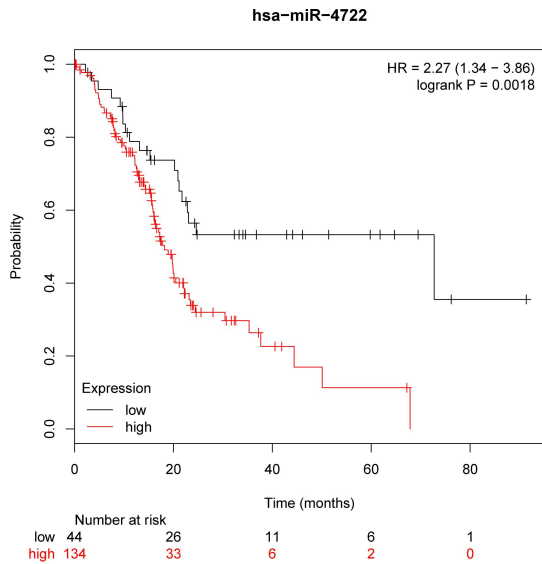
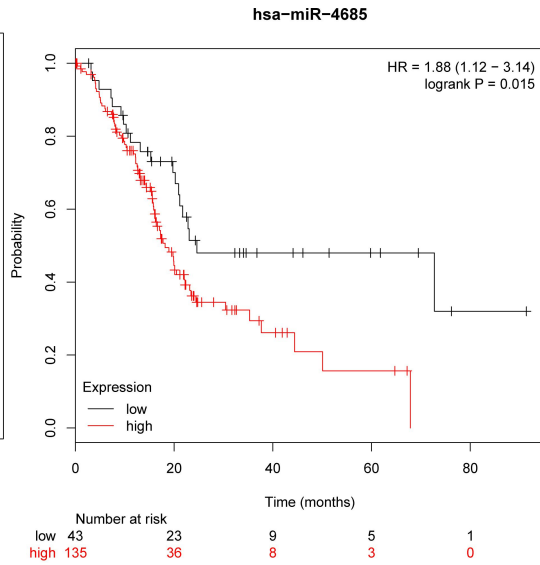
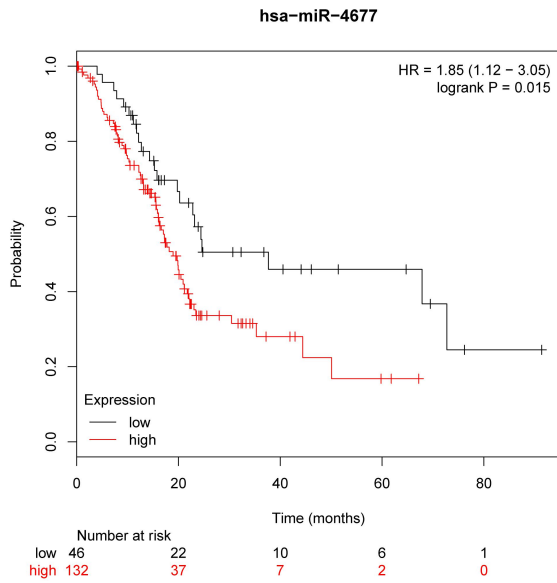


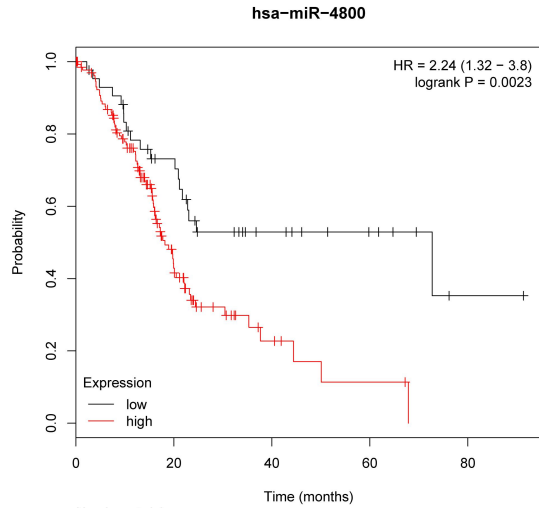
Number at risk		0	20	40	60	80
low	44	26	11	6	1	
high	134	33	6	2	0	



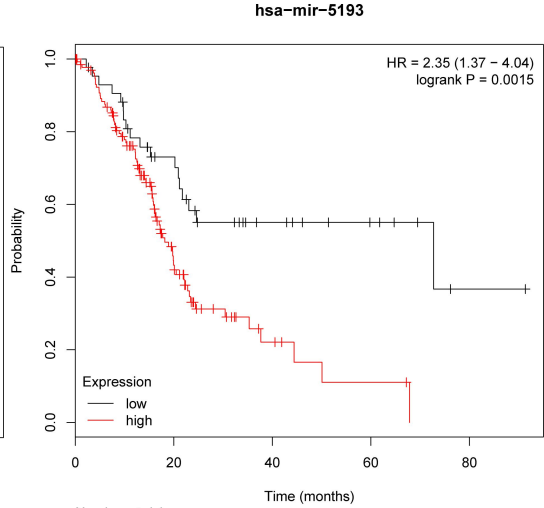




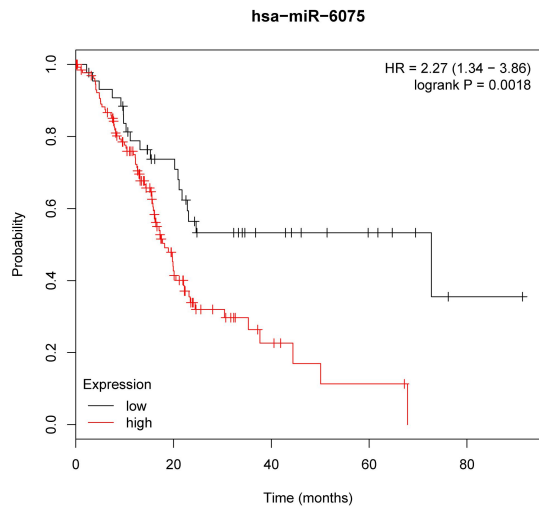




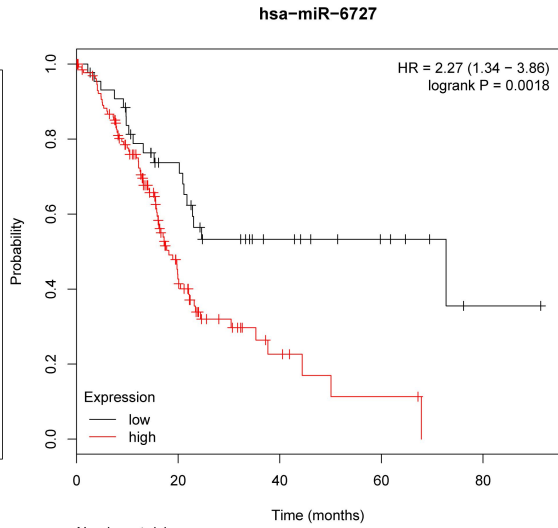
		0	20	40	60	80
low	Number at risk	43	26	11	6	1
high	Number at risk	135	33	6	2	0



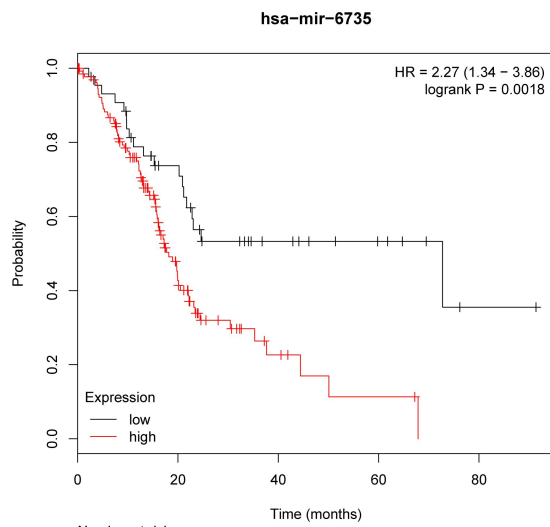
		0	20	40	60	80
low	Number at risk	43	25	11	6	1
high	Number at risk	135	34	6	2	0



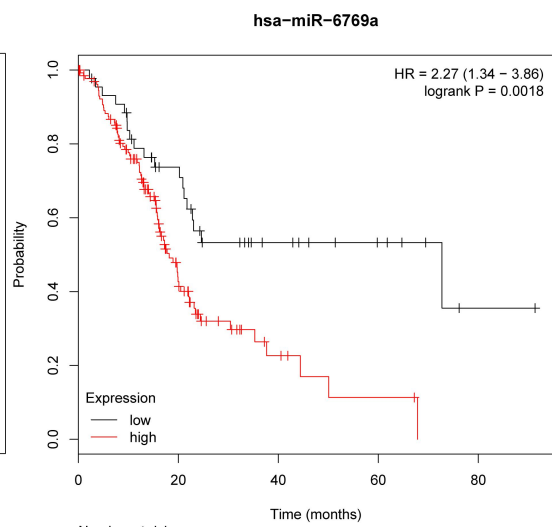
		0	20	40	60	80
low	Number at risk	44	26	11	6	1
high	Number at risk	134	33	6	2	0



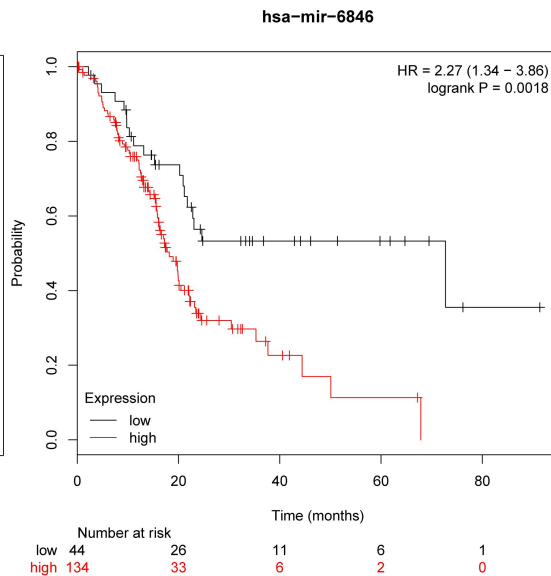
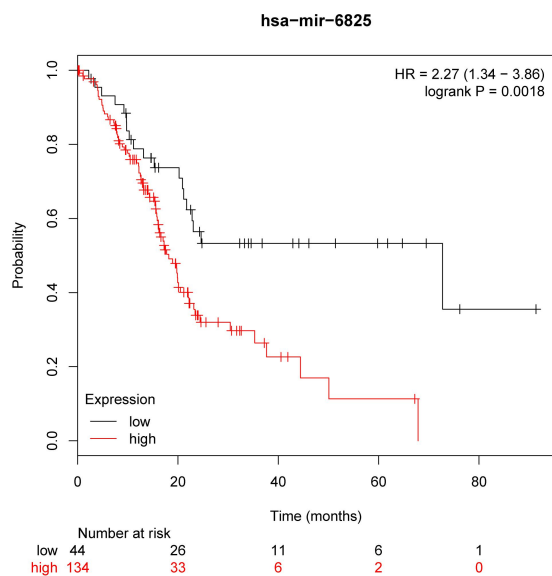
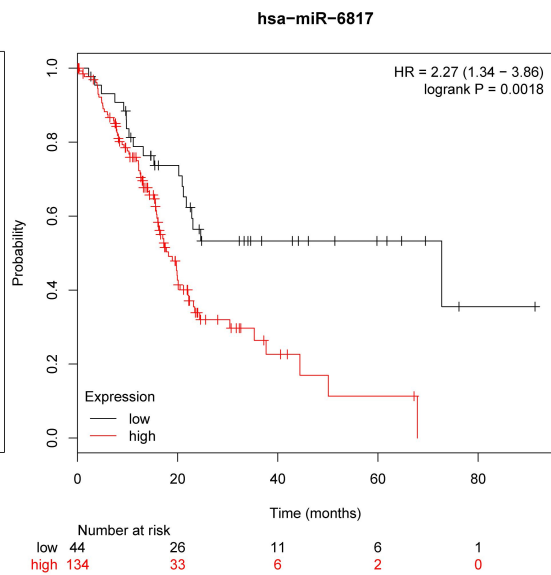
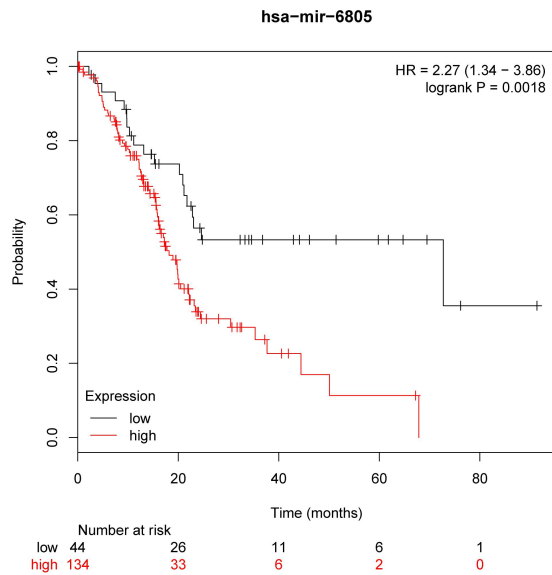
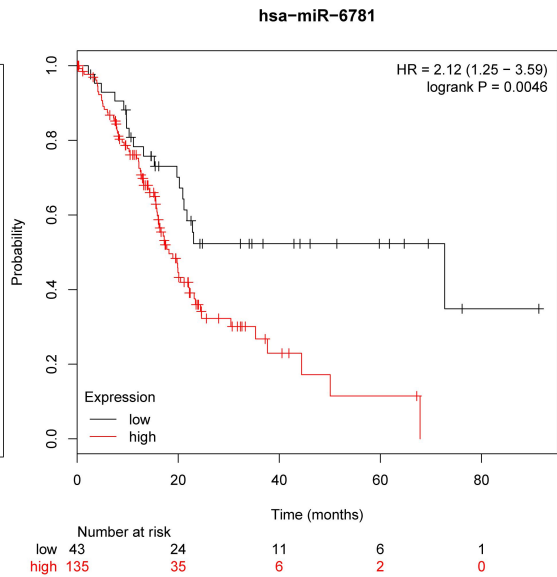
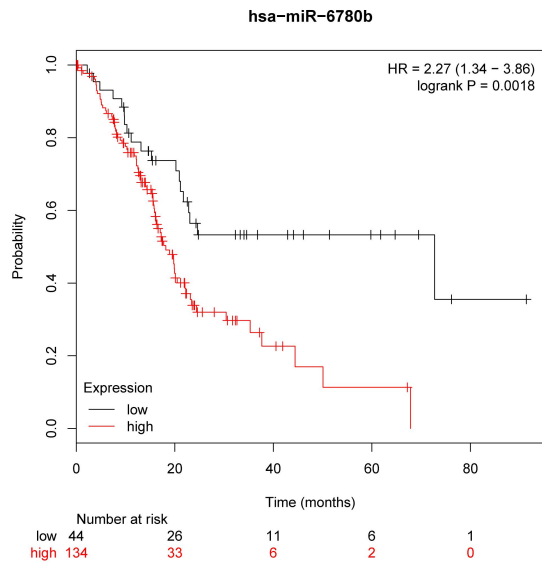
		0	20	40	60	80
low	Number at risk	44	26	11	6	1
high	Number at risk	134	33	6	2	0

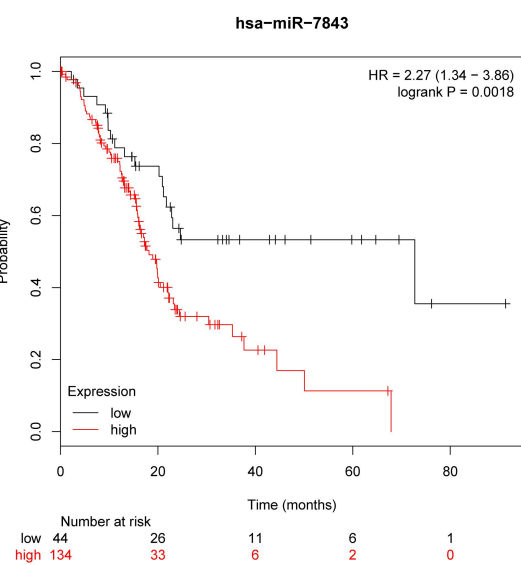
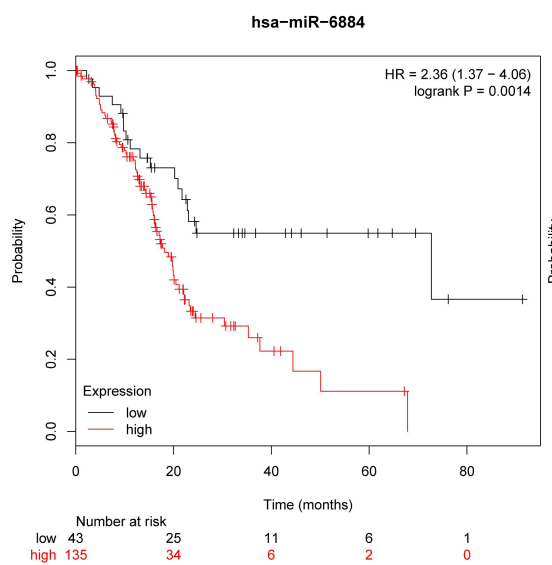
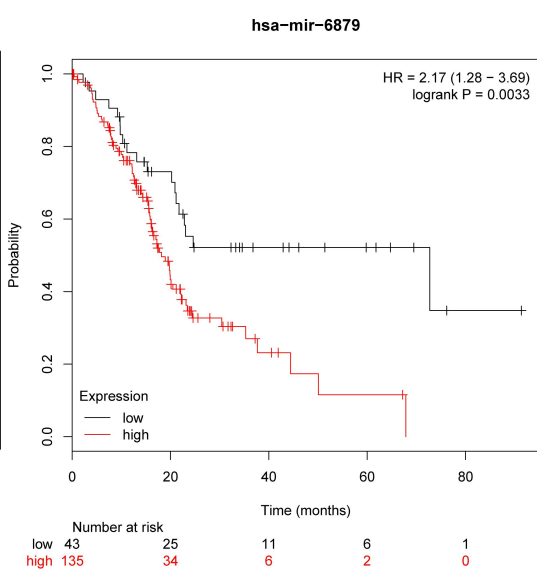
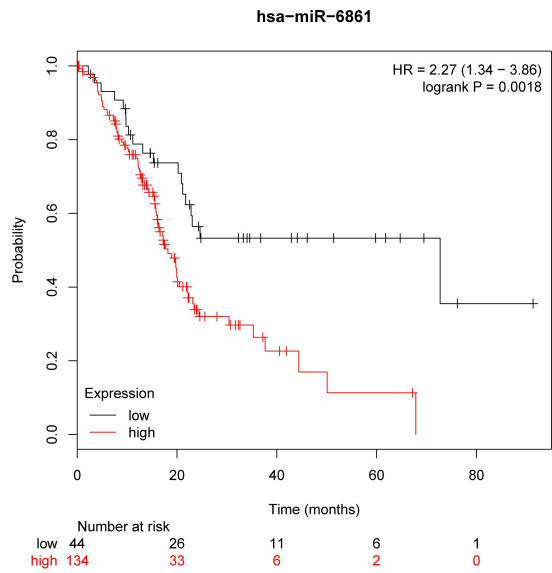
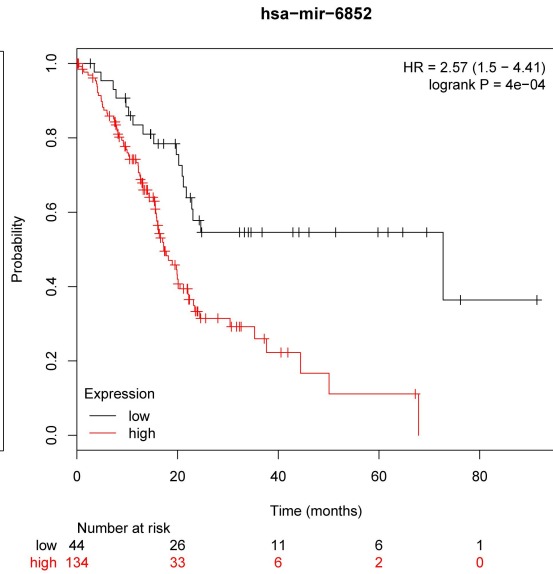
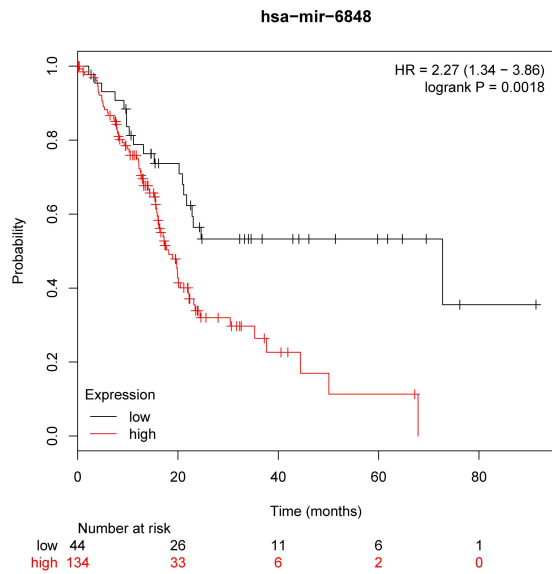


		0	20	40	60	80
low	Number at risk	44	26	11	6	1
high	Number at risk	134	33	6	2	0

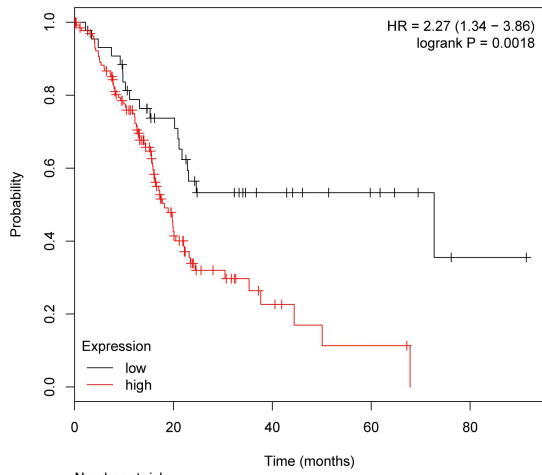


		0	20	40	60	80
low	Number at risk	44	26	11	6	1
high	Number at risk	134	33	6	2	0



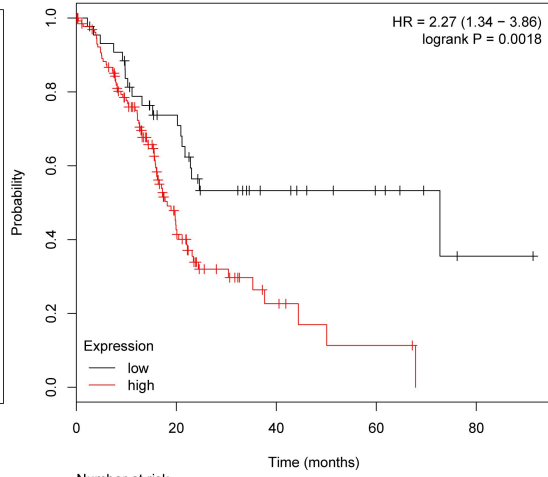


hsa-miR-8057



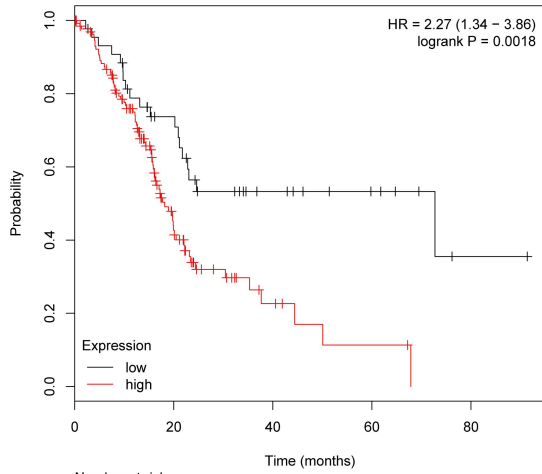
		0	26	44	66	80
low	Number at risk	44	26	11	6	1
high	Number at risk	134	33	6	2	0

hsa-miR-8076



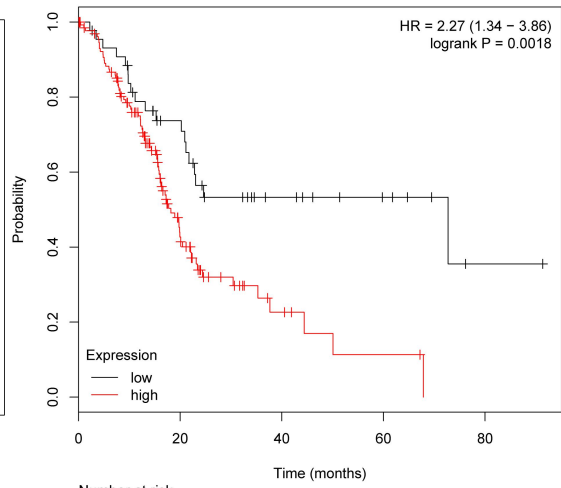
		0	26	44	66	80
low	Number at risk	44	26	11	6	1
high	Number at risk	134	33	6	2	0

hsa-miR-8089



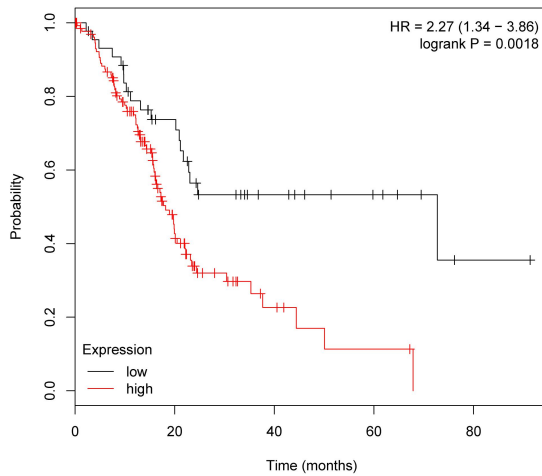
		0	26	44	66	80
low	Number at risk	44	26	11	6	1
high	Number at risk	134	33	6	2	0

hsa-miR-4667



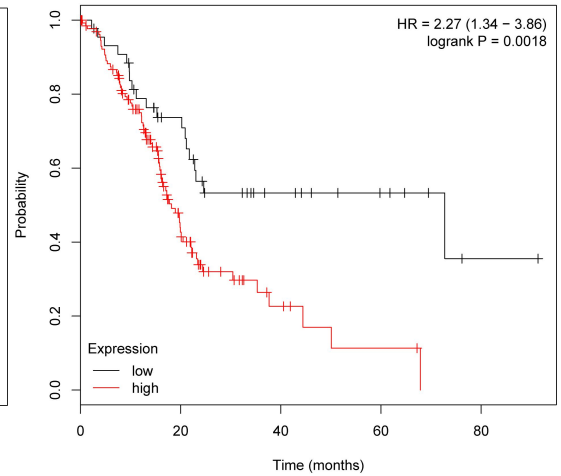
		0	26	44	66	80
low	Number at risk	44	26	11	6	1
high	Number at risk	134	33	6	2	0

hsa-miR-4700



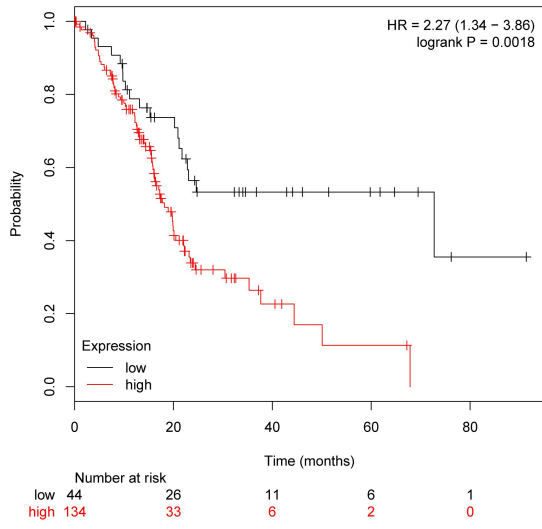
		0	26	44	66	80
low	Number at risk	44	26	11	6	1
high	Number at risk	134	33	6	2	0

hsa-miR-4708



		0	26	44	66	80
low	Number at risk	44	26	11	6	1
high	Number at risk	134	33	6	2	0

hsa-mir-4313



hsa-mir-4652

