

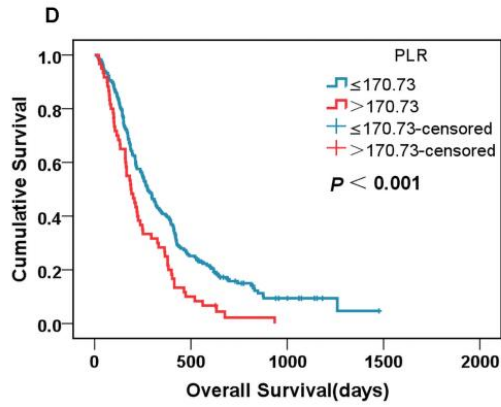
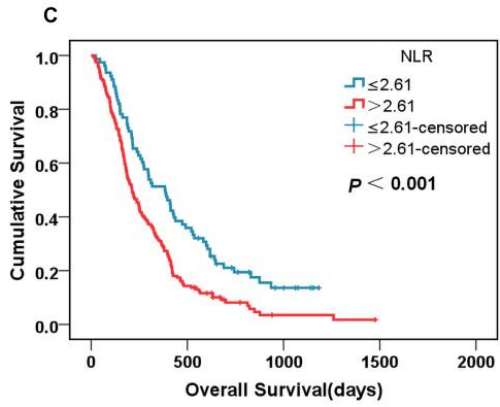
No. at risk

≤ 0.079	116	32	6	0	0
> 0.079	123	19	2	0	0

with aggressive treatments

No. at risk

≤ 0.36	138	40	8	0	0
> 0.36	101	11	0	0	0



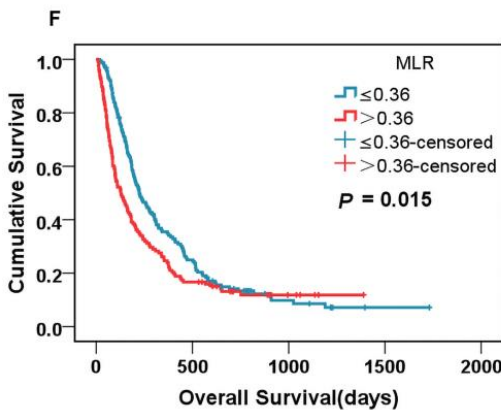
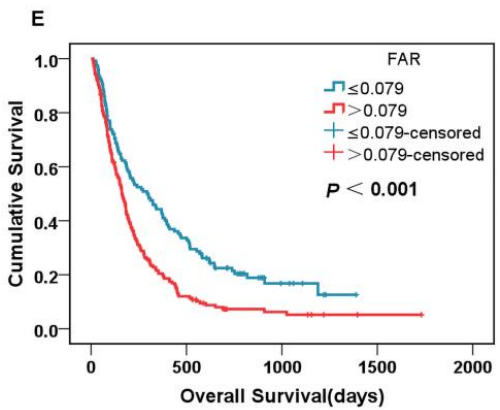
No. at risk

≤ 2.61	78	28	6	0	0
> 2.61	161	23	2	0	0

with aggressive treatments

No. at risk

≤ 170.73	179	45	8	0	0
> 170.73	60	6	0	0	0



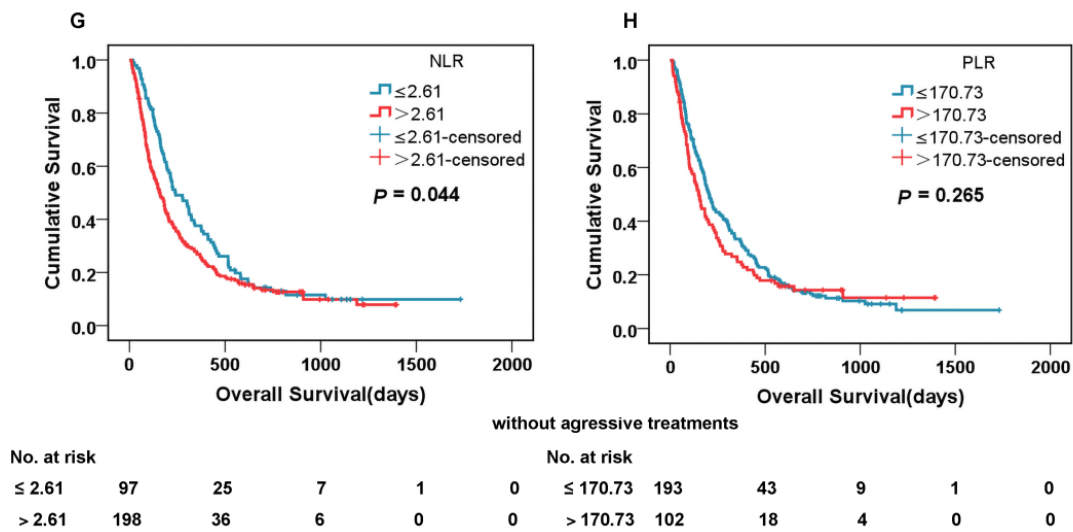
No. at risk

≤ 0.079	122	41	7	0	0
> 0.079	173	20	6	1	0

without aggressive treatments

No. at risk

≤ 0.36	157	38	8	1	0
> 0.36	138	23	5	0	0



S10 Fig. Kaplan-Meier survival curves of different locally advanced or metastatic pancreatic cancer patients subgroups in training set. (A) Data compares fibrinogen-to-albumin ratio (FAR) ≤ 0.079 vs. > 0.079 ($p=0.001$) in patients who receive aggressive treatments. (B) Data compares monocyte-to-lymphocyte ratio (MLR) ≤ 0.36 vs. > 0.36 ($p < 0.001$) in patients who receive aggressive treatments. (C) Data compares neutrophil to lymphocyte ratio (NLR) ≤ 2.61 vs. > 2.61 ($p < 0.001$) in patients who receive aggressive treatments. (D) Data compares platelet-to-lymphocyte ratio (PLR) ≤ 170.73 vs. > 170.73 ($p < 0.001$) in patients who receive aggressive treatments. (E) Data compares FAR ≤ 0.079 vs. > 0.079 ($p < 0.001$) in patients who did not receive aggressive treatments. (F) Data compares MLR ≤ 0.36 vs. > 0.36 ($p=0.015$) in patients who did not receive aggressive treatments. (G) Data compares NLR ≤ 2.61 vs. > 2.61 ($p < 0.004$) in patients who did not receive aggressive treatments. (H) Data compares PLR ≤ 170.73 vs. > 170.73 ($p > 0.05$) in patients who did not receive aggressive treatments.