

Table S1 Incidence rate changes from 1975–2016 of the 10 leading cancers in males by race and ethnicity in the United States

Cancer	Incidence rank			Age-adjusted incidence rate (95% CI)			Incidence count			Relative change in incidence (2016 vs. 1975)	Relative change in incidence (2016 vs. 2000)
	1975	2000	2016	1975	2000	2016	1975	2000	2016		
Male white											
All malignant cancers				468.6 (462.9–474.3)	585.1 (580.1–590.1)	474.1(470.2–478.0)	29,271	53,200	59,791	1.2%	–19.0%
Prostate	1	1	1	92.2 (89.5–94.9)	179.8 (177.1–182.6)	102.0 (100.3–103.8)	5,042	16,233	13,877	10.6%	–43.3%
Lung and bronchus	2	2	2	89.1 (86.8–91.6)	80.8 (78.9–82.7)	56.1 (54.8–57.5)	5,909	7,223	6,975	–37.0%	–30.6%
Colon and rectum	3	3	3	69.8 (67.6–72.0)	63.1 (61.5–64.8)	41.1 (39.9–42.2)	4,180	5,615	5,080	–41.1%	–34.9%
Melanoma of the skin	10	6	4	9.4 (8.7–10.2)	28.5 (27.5–29.7)	38.9 (37.7–40.0)	664	2,708	4,789	313.8%	36.5%
Urinary bladder	4	4	5	36.4 (34.8–38.1)	42.6 (41.2–44.0)	37.2 (36.0–38.3)	2,184	3,746	4,489	2.2%	–12.7%
Lymphoma	6	5	6	17.4 (16.4–18.5)	29.3 (28.2–30.4)	27.4 (26.5–28.4)	1,234	2,745	3,310	57.5%	–6.5%
Kidney and renal pelvis	9	8	7	10.8 (10.0–11.7)	18.1 (17.3–19.0)	21.6 (20.7–22.4)	725	1,689	2,732	100.0%	19.3%
Leukaemia	5	7	8	17.5 (16.4–18.6)	18.9 (18.0–19.8)	19.2 (18.4–20.0)	1,103	1,712	2,315	9.7%	1.6%
Pancreas	8	9	9	15.7 (14.6–16.7)	12.9 (12.2–13.7)	14.1 (13.4–14.8)	958	1,157	1,762	–10.2%	9.3%
Liver	18	16	10	3.0 (2.6–3.5)	5.9 (5.4–6.4)	9.7 (9.1–10.2)	193	547	1,318	223.3%	64.4%
Male black											
All malignant cancers				525.4 (502.5–549.0)	718.6 (699.9–737.7)	521.7 (509.6–534.0)	2,605	6,285	8,186	–0.7%	–27.4%
Prostate	1	1	1	141.2 (128.3–154.8)	296.6 (284.6–309.0)	172.8 (166.1–179.7)	577	2,486	2,853	22.4%	–41.7%
Lung and bronchus	2	2	2	114.7 (105.0–125.0)	115.1 (107.6–122.9)	73.0 (68.3–77.9)	629	982	1,047	–36.4%	–36.6%
Colon and rectum	3	3	3	59.3 (51.5–67.9)	74.4 (68.2–80.9)	51.0 (47.3–55.0)	272	612	783	–14.0%	–31.5%
Kidney and renal pelvis	12	7	4	8.2 (5.9–11.2)	19.2 (16.3–22.5)	25.6 (23.1–28.3)	49	176	423	212.2%	33.3%
Lymphoma	10	4	5	11.7 (9.1–14.9)	21.3 (18.4–24.4)	22.3 (20.0–24.9)	80	234	372	90.6%	4.7%
Urinary bladder	7	5	6	16.3 (12.5–20.9)	20.3 (17.1–24.0)	20.9 (18.2–23.7)	78	155	263	28.2%	3.0%
Liver	13	13	7	5.9 (4.0–8.3)	10.4 (8.3–12.7)	17.1 (15.2–19.2)	36	103	316	189.8%	64.4%
Pancreas	6	8	8	18.1 (14.2–22.6)	18.2 (15.4–21.3)	17.0 (14.8–19.4)	96	167	253	–6.1%	–6.6%
Myeloma	11	11	9	10.9 (8.0–14.4)	10.9 (8.8–13.4)	16.5 (14.4–18.8)	56	99	252	51.4%	51.4%
Leukaemia	7	9	10	16.3 (12.1–21.3)	14.1 (11.6–16.8)	15.3 (13.2–17.6)	75	137	227	–6.1%	8.5%
Male other race and ethnicity											
All malignant cancers				330.2 (309.4–352.0)	413.8 (401.2–426.6)	323.2 (315.1–331.4)	1,115	4,288	6,395	–2.1%	–21.9%
Prostate	1	1	1	61.9 (52.3–72.6)	114.2 (107.6–121.2)	64.3 (60.8–68.0)	170	1,125	1,282	3.9%	–43.7%
Lung and bronchus	2	2	2	58.5 (50.0–68.0)	64.5 (59.6–69.7)	48.3 (45.1–51.6)	198	649	903	–17.4%	–25.1%
Colon and rectum	3	3	3	49.4 (41.8–57.8)	58.3 (53.6–63.2)	40.8 (38.0–43.8)	176	602	820	–17.4%	–30.0%
Lymphoma	6	6	4	12.4 (8.9–16.7)	17.2 (14.8–19.8)	18.1 (16.3–20.1)	48	198	372	46.0%	5.2%
Liver	8	7	5	11.8 (8.5–15.9)	16.4 (14.1–18.9)	17.0 (15.3–19.0)	46	187	355	44.1%	3.7%
Urinary bladder	5	5	6	18.3 (13.3–24.3)	18.3 (15.7–21.3)	16.0 (14.2–18.0)	52	179	296	–12.6%	–12.6%
Kidney and renal pelvis	13	10	7	4.1 (2.2–6.8)	10.9 (9.0–13.0)	13.7 (12.1–15.5)	16	118	279	234.1%	25.7%
Pancreas	9	8	8	9.9 (6.5–14.3)	12.1 (10.0–14.5)	13.1 (11.5–14.9)	30	120	246	32.3%	8.3%
Stomach	4	4	9	28.1 (22.2–34.8)	21.5 (18.6–24.6)	11.3 (9.8–12.9)	95	212	214	–59.8%	–47.4%
Leukaemia	10	9	10	8.3 (5.3–12.3)	11.9 (10.0–14.2)	10.1 (8.8–11.7)	31	138	201	21.7%	–15.1%

Rank is based on age-adjusted incidence rate. Age-adjusted incidence rates are per 100,000 population and age-adjusted to the 2000 United States standard population. Incidence count is the number of cancer occurrences. Other race and ethnicity includes American Indian/AK Native, Asian/Pacific Islander. CI, confidence interval.

Table S2 Incidence rate changes from 1975–2016 of the 10 leading cancers in females by race and ethnicity in the United States

Cancer	Incidence rank			Age-adjusted incidence rate (95% CI)			Incidence count			Relative change in incidence (2016 vs. 1975)	Relative change in incidence (2016 vs. 2000)
	1975	2000	2016	1975	2000	2016	1975	2000	2016		
Female white											
All malignant cancers				369.7 (365.5–373.9)	438.2 (434.3–442.1)	424.7 (421.2–428.3)	30,823	49,974	58,632	14.9%	–3.1%
Breast	1	1	1	107.4 (105.1–109.7)	143.0 (140.8–145.3)	132.7 (130.7–134.7)	8,741	16,015	18,106	23.6%	–7.2%
Lung and bronchus	4	2	2	24.8 (23.8–25.9)	53.2 (51.9–54.6)	47.1 (46.0–48.3)	2,121	6,110	6,925	89.9%	–11.5%
Colon and rectum	2	3	3	54.1 (52.5–55.7)	46.6 (45.3–47.8)	32.6 (31.6–33.6)	4,504	5,608	4,560	–39.7%	–30.0%
Corpus and uterus	3	4	4	37.3 (36.1–38.7)	26.2 (25.3–27.2)	28.0 (27.1–28.9)	3,259	2,940	4,065	–24.9%	6.9%
Melanoma of the skin	11	6	5	8.3 (7.6–8.9)	19.1 (18.3–20.0)	26.2 (25.3–27.1)	674	2,092	3,390	215.7%	37.2%
Thyroid	13	8	6	6.4 (5.8–7.0)	11.8 (11.1–12.5)	22.7 (21.8–23.6)	526	1,251	2,627	254.7%	92.4%
Lymphoma	7	5	7	12.7 (12.0–13.5)	19.7 (18.9–20.6)	19.1 (18.4–19.9)	1,093	2,258	2,643	50.4%	–3.0%
Pancreas	10	11	8	8.9 (8.3–9.6)	9.6 (9.0–10.1)	11.4 (10.9–12.0)	744	1,147	1,698	28.1%	18.8%
Leukaemia	8	9	9	10.1 (9.4–10.8)	11.2 (10.6–11.9)	11.1 (10.5–11.7)	846	1,301	1,506	9.9%	–0.9%
Kidney and renal pelvis	15	12	10	4.6 (4.2–5.1)	8.4 (7.9–9.0)	10.6 (10.0–11.1)	392	960	1,462	130.4%	26.2%
Female black											
All malignant cancers				356.9 (341.7–372.6)	407.5 (396.3–418.9)	402.5 (393.6–411.6)	2,325	5,205	8,180	12.8%	–1.2%
Breast	1	1	1	93.6 (86.2–101.4)	119.3 (113.4–125.4)	128.2 (123.2–133.3)	637	1,596	2,642	37.0%	7.5%
Lung and bronchus	4	3	2	24.7 (20.8–29.0)	57.8 (53.6–62.3)	46.4 (43.3–49.6)	160	701	908	87.9%	–19.7%
Colon and rectum	2	2	3	54.7 (48.4–61.4)	58.1 (53.9–62.7)	41.6 (38.8–44.7)	314	692	831	–23.9%	–28.4%
Corpus and uterus	5	4	4	20.1 (16.6–24.0)	18.1 (15.8–20.7)	27.8 (25.5–30.2)	128	225	595	38.3%	53.6%
Lymphoma	11	6	5	6.4 (4.5–8.8)	12.6 (10.8–14.7)	16.4 (14.6–18.3)	45	179	329	156.3%	30.2%
Pancreas	6	5	6	13.9 (10.9–17.4)	13.4 (11.3–15.7)	14.7 (13.0–16.6)	84	156	294	5.8%	9.7%
Kidney and renal pelvis	13	7	7	4.3 (2.8–6.4)	12.0 (10.1–14.1)	13.9 (12.3–15.7)	28	154	278	223.3%	15.8%
Thyroid	14	14	8	4.2 (2.9–6.0)	6.6 (5.3–8.1)	12.9 (11.4–14.6)	35	98	273	207.1%	95.5%
Myeloma	9	8	9	8.6 (6.3–11.4)	11.1 (9.2–13.1)	12.5 (10.9–14.2)	51	133	242	45.3%	12.6%
Leukaemia	10	10	10	8.5 (6.3–11.2)	10.3 (8.6–12.3)	9.5 (8.2–11.0)	58	134	189	11.8%	–7.8%
Female other race and ethnicity											
All malignant cancers				271.3 (254.4–289.0)	299.3 (290.1–308.7)	308.8 (301.9–315.9)	1,063	4,073	7,733	13.8%	3.2%
Breast	1	1	1	59.8 (52.4–67.9)	93.5 (88.5–98.7)	105.1 (101.1–109.2)	251	1,308	2,635	75.8%	12.4%
Lung and bronchus	5	3	2	17.3 (13.2–22.3)	27.1 (24.3–30.0)	29.9 (27.7–32.1)	64	353	745	72.8%	10.3%
Colon and rectum	2	2	3	40.3 (33.5–47.9)	35.8 (32.6–39.2)	27.3 (25.2–29.4)	139	468	687	–32.3%	–23.7%
Corpus and uterus	4	4	4	21.2 (17.1–26.0)	18.2 (16.0–20.6)	24.7 (22.8–26.8)	95	254	639	16.5%	35.7%
Thyroid	8	7	5	11.7 (8.7–15.4)	11.2 (9.6–13.1)	19.8 (18.0–21.6)	54	168	486	69.2%	76.8%
Lymphoma	13	5	6	4.7 (2.8–7.4)	12.7 (10.9–14.8)	12.4 (11.0–13.9)	21	172	305	163.8%	–2.4%
Pancreas	10	9	7	6.1 (3.7–9.5)	9.4 (7.8–11.3)	9.9 (8.7–11.3)	21	118	250	62.3%	5.3%
Ovary	7	8	8	13.1 (9.7–17.2)	10.2 (8.6–12.0)	8.1 (7.0–9.4)	55	143	198	–38.2%	–20.6%
Stomach	3	6	9	21.7 (16.8–27.5)	11.8 (10.0–13.8)	7.3 (6.3–8.5)	72	149	184	–66.4%	–38.1%
Leukaemia	9	11	10	8.8 (5.9–12.6)	6.6 (5.3–8.1)	6.4 (5.4–7.5)	34	91	154	–27.3%	–3.0%

Rank is based on age-adjusted incidence rate. Age-adjusted incidence rates are per 100,000 population and age-adjusted to the 2000 United States standard population. Incidence count is the number of cancer occurrences. Other race and ethnicity includes American Indian/AK Native, Asian/Pacific Islander. CI, confidence interval.

Table S3 Incidence rate changes from 1975–2016 of the 10 leading cancers by age group (birth – 39 years) in the United States

Cancer	Incidence rank			Age-adjusted incidence rate (95% CI)			Incidence count			Relative change in incidence (2016 vs. 1975)	Relative change in incidence (2016 vs. 2000)
	1975	2000	2016	1975	2000	2016	1975	2000	2016		
Male (birth –39 years)											
All malignant cancers				32.7 (31.2–34.3)	41.2 (39.8–42.6)	44.0 (42.6–45.5)	1,937	3,290	3,662	34.6%	6.8%
Testis	2	2	1	4.0 (3.5–4.5)	6.5 (6.0–7.1)	7.3 (6.7–7.9)	252	528	633	82.5%	12.3%
Lymphoma	1	1	2	5.5 (4.9–6.1)	7.0 (6.4–7.6)	6.5 (5.9–7.0)	352	560	546	18.2%	–7.1%
Leukaemia	3	4	3	3.6 (3.1–4.1)	4.0 (3.6–4.5)	4.6 (4.1–5.1)	225	320	372	27.8%	15.0%
Melanoma of the skin	4	3	4	3.0 (2.5–3.5)	4.4 (3.9–4.9)	4.0 (3.5–4.4)	167	351	328	33.3%	–9.1%
Brain and other nervous system	5	5	5	2.7 (2.3–3.1)	3.6 (3.2–4.0)	3.4 (3.0–3.8)	169	283	284	25.9%	–5.6%
Colon and rectum	7	6	6	1.6 (1.3–2.0)	2.0 (1.7–2.3)	3.2 (2.8–3.6)	85	156	264	100.0%	60.0%
Thyroid	7	7	7	1.6 (1.2–1.9)	1.7 (1.4–2.0)	2.9 (2.6–3.3)	92	133	243	81.3%	70.6%
Kidney and renal pelvis	10	9	8	1.0 (0.7–1.3)	1.1 (0.9–1.4)	1.9 (1.6–2.3)	50	89	153	90.0%	72.7%
Soft tissue including heart	9	8	9	1.1 (0.8–1.4)	1.5 (1.3–1.8)	1.8 (1.5–2.1)	70	122	151	63.6%	20.0%
Bones and joints	12	10	10	0.8 (0.6–1.1)	0.8 (0.6–1.0)	0.8 (0.6–1.0)	58	64	64	0.0%	0.0%
Female (birth –39 years)											
All malignant cancers				48.2 (46.3–50.1)	55.3 (53.7–57.0)	66.5 (64.8–68.4)	2,703	4,343	5,366	38.0%	20.3%
Breast	1	1	1	12.3 (11.3–13.3)	13.1 (12.3–14.0)	14.1 (13.3–14.9)	593	1,035	1,109	14.6%	7.6%
Thyroid	3	2	2	4.6 (4.0–5.2)	7.2 (6.7–7.9)	13.3 (12.5–14.1)	281	574	1,100	189.1%	84.7%
Melanoma of the skin	5	3	3	3.6 (3.1–4.2)	6.4 (5.9–7.0)	7.0 (6.4–7.5)	214	509	571	94.4%	9.4%
Lymphoma	4	4	4	3.7 (3.3–4.2)	4.9 (4.4–5.4)	4.8 (4.3–5.3)	247	381	394	29.7%	–2.0%
Leukaemia	6	6	5	2.4 (2.0–2.8)	3.4 (3.0–3.9)	3.8 (3.4–4.3)	150	260	303	58.3%	11.8%
Colon and rectum	9	9	5	1.8 (1.4–2.2)	1.6 (1.3–1.9)	3.8 (3.4–4.3)	91	126	307	111.1%	137.5%
Cervix uteri	2	5	7	6.1 (5.5–6.9)	3.8 (3.3–4.2)	3.5 (3.1–4.0)	337	301	288	–42.6%	–7.9%
Brain and other nervous system	7	7	8	2.3 (2.0–2.7)	3.0 (2.6–3.4)	2.5 (2.1–2.8)	147	227	197	8.7%	–16.7%
Corpus and uterus	10	10	9	1.7 (1.3–2.1)	1.5 (1.2–1.8)	2.1 (1.8–2.5)	80	118	170	23.5%	40.0%
Ovary	7	8	10	2.3 (1.9–2.8)	1.8 (1.5–2.2)	1.8 (1.5–2.1)	135	143	143	–21.7%	0.0%

Rank is based on age-adjusted incidence rate. Age-adjusted incidence rates are per 100,000 population and age-adjusted to the 2000 United States standard population. Incidence count is the number of cancer occurrences. CI, confidence interval.

Table S4 Incidence rate changes from 1975–2016 of the 10 leading cancers by age group (40–49 years) in the United States

Cancer	Incidence rank			Age-adjusted incidence rate (95% CI)			Incidence count			Relative change in incidence (2016 vs. 1975)	Relative change in incidence (2016 vs. 2000)
	1975	2000	2016	1975	2000	2016	1975	2000	2016		
Male (40–49 years)											
All malignant cancers				187.4 (179.5–195.7)	215.8 (209.5–222.3)	193.4 (187.3–199.6)	2,090	4,449	3,863	3.2%	–10.4%
Colon and rectum	2	2	1	20.4 (17.8–23.2)	22.2 (20.2–24.3)	28.1 (25.8–30.5)	229	457	564	37.7%	26.6%
Melanoma of the skin	3	4	2	12.5 (10.4–14.7)	21.2 (19.3–23.3)	19.4 (17.5–21.4)	136	437	382	55.2%	–8.5%
Kidney and renal pelvis	6	6	3	7.2 (5.7–8.9)	10.6 (9.2–12.1)	17.6 (15.8–19.5)	79	218	350	144.4%	66.0%
Prostate	16	3	4	3.0 (2.1–4.2)	22.0 (20.0–24.1)	16.1 (14.5–18.0)	35	454	333	436.7%	–26.8%
Lymphoma	4	1	5	12.2 (10.2–14.5)	22.5 (20.5–24.6)	15.8 (14.1–17.6)	134	463	313	29.5%	–29.8%
Thyroid	12	12	6	4.9 (3.6–6.4)	5.2 (4.2–6.2)	10.4 (9.0–11.9)	53	106	202	112.2%	100.0%
Lung and bronchus	1	5	7	44.2 (40.4–48.3)	20.1 (18.2–22.1)	9.3 (8.0–10.7)	500	415	190	–79.0%	–53.7%
Testis	11	7	8	5.1 (3.8–6.6)	9.5 (8.3–11.0)	9.0 (7.7–10.4)	54	196	173	76.5%	–5.3%
Leukaemia	10	9	9	5.4 (4.1–7.0)	7.7 (6.5–9.0)	8.7 (7.4–10.1)	60	158	171	61.1%	13.0%
Urinary bladder	5	8	10	10.4 (8.6–12.4)	9.4 (8.1–10.8)	6.0 (5.0–7.2)	116	194	121	–42.3%	–36.2%
Female (40–49 years)											
All malignant cancers				338.8 (328.2–349.7)	340.4 (332.6–348.4)	363.2 (354.9–371.6)	3,879	7,170	7,323	7.2%	6.7%
Breast	1	1	1	145.6 (138.7–152.8)	155.9 (150.6–161.3)	159.5 (154.0–165.1)	1,669	3,286	3,222	9.5%	2.3%
Thyroid	8	4	2	9.8 (8.0–11.9)	18.0 (16.2–19.9)	34.5 (32.0–37.2)	107	378	684	252.0%	91.7%
Colon and rectum	5	6	3	22.2 (19.5–25.1)	15.8 (14.1–17.6)	26.2 (24.1–28.6)	256	333	531	18.0%	65.8%
Melanoma of the skin	7	2	4	11.0 (9.1–13.1)	22.3 (20.3–24.4)	24.8 (22.6–27.0)	124	468	497	125.5%	11.2%
Corpus and uterus	2	3	5	24.4 (21.7–27.5)	19.1 (17.2–21.0)	20.8 (18.9–22.9)	285	402	423	–14.8%	8.9%
Cervix uteri	3	7	6	22.7 (20.0–25.6)	13.7 (12.1–15.4)	11.8 (10.3–13.4)	254	287	232	–48.0%	–13.9%
Lymphoma	9	9	7	8.6 (7.0–10.5)	12.6 (11.1–14.2)	11.1 (9.7–12.7)	98	264	226	29.1%	–11.9%
Lung and bronchus	4	5	8	22.4 (19.7–25.3)	17.4 (15.7–19.3)	10.6 (9.2–12.1)	259	367	218	–52.7%	–39.1%
Ovary	6	8	9	21.0 (18.4–23.8)	13.0 (11.5–14.7)	9.7 (8.4–11.1)	240	275	195	–53.8%	–25.4%
Kidney and renal pelvis	14	10	10	3.0 (2.1–4.2)	5.4 (4.4–6.5)	7.8 (6.6–9.1)	34	113	158	160.0%	44.4%

Rank is based on age-adjusted incidence rate. Age-adjusted incidence rates are per 100,000 population and age-adjusted to the 2000 United States standard population. Incidence count is the number of cancer occurrences. CI, confidence interval.

Table S5 Incidence rate changes from 1975–2016 of the 10 leading cancers by age group (50–59 years) in the United States

Cancer	Incidence rank			Age-adjusted incidence rate (95% CI)			Incidence count			Relative change in incidence (2016 vs. 1975)	Relative change in incidence (2016 vs. 2000)
	1975	2000	2016	1975	2000	2016	1975	2000	2016		
Male (50–59 years)											
All malignant cancers				559.9 (545.8–574.4)	737.9 (724.0–752.1)	646.1 (635.1–657.2)	5,972	10,705	13,426	15.4%	–12.4%
Prostate	3	1	1	44.4 (40.6–48.6)	236.4 (228.6–244.5)	168.6 (163.1–) 174.3	481	3,415	3,556	279.7%	–28.7%
Colon and rectum	2	3	2	71.0 (66.1–76.3)	73.9 (69.5–78.4)	77.1 (73.3–81.1)	760	1,074	1,557	8.6%	4.3%
Lung and bronchus	1	2	3	150.3 (143.0–157.9)	87.1 (82.3–92.0)	56.0 (52.8–59.3)	1,602	1,261	1,174	–62.7%	–35.7%
Melanoma of the skin	11	4	4	15.1 (12.9–17.7)	39.4 (36.2–42.7)	44.0 (41.2–47.0)	160	573	915	191.4%	11.7%
Kidney and renal pelvis	7	7	5	20.1 (17.5–23.0)	29.8 (27.0–32.7)	37.6 (35.0–40.4)	214	433	778	87.1%	26.2%
Lymphoma	5	6	6	23.8 (21.0–27.0)	32.7 (29.8–35.8)	31.4 (29.0–33.9)	252	476	650	31.9%	–4.0%
Urinary bladder	4	5	7	35.8 (32.3–39.5)	36.8 (33.7–40.1)	29.2 (26.9–31.7)	382	534	614	–18.4%	–20.7%
Liver	17	10	8	6.2 (4.8–7.9)	14.5 (12.6–16.6)	19.9 (18.1–22.0)	67	211	424	221.0%	37.2%
Leukaemia	10	8	9	15.5 (13.2–18.0)	18.9 (16.8–21.3)	18.5 (16.7–20.5)	165	275	384	19.4%	–2.1%
Pancreas	9	9	10	17.6 (15.2–20.4)	16.9 (14.8–19.1)	16.2 (14.5–18.1)	187	245	335	–8.0%	–4.1%
Female (50–59 years)											
All malignant cancers				674.7 (659.6–690.0)	703.7 (690.5–717.2)	683.8 (672.6–695.1)	7,637	10,685	14,541	1.3%	–2.8%
Breast	1	1	1	219.0 (210.4–227.8)	293.6 (285.1–302.4)	256.8 (249.9–263.8)	2,462	4,462	5,412	17.3%	–12.5%
Corpus and uterus	2	3	2	112.9 (106.8–119.2)	55.3 (51.6–59.2)	62.1 (58.8–65.6)	1,286	839	1,355	–45.0%	12.3%
Colon and rectum	3	4	3	63.9 (59.4–68.8)	54.3 (50.7–58.2)	55.2 (52.0–58.5)	729	825	1,143	–13.6%	1.7%
Lung and bronchus	4	2	4	57.6 (53.3–62.2)	70.9 (66.7–75.3)	55.0 (51.9–58.2)	655	1,072	1,205	–4.5%	–22.4%
Thyroid	15	8	5	7.5 (6.0–9.3)	16.9 (14.9–19.1)	36.3 (33.7–39.0)	85	258	754	384.0%	114.8%
Melanoma of the skin	8	6	6	12.3 (10.3–14.5)	26.4 (23.8–29.1)	34.0 (31.5–36.6)	137	401	720	176.4%	28.8%
Lymphoma	7	7	7	17.2 (14.9–19.8)	22.3 (20.0–24.8)	22.8 (20.8–24.9)	194	339	483	32.6%	2.2%
Ovary	5	5	8	34.1 (30.8–37.7)	29.0 (26.3–31.8)	18.2 (16.4–20.1)	385	440	387	–46.6%	–37.2%
Kidney and renal pelvis	14	9	9	8.1 (6.6–10.0)	13.9 (12.1–15.9)	17.1 (15.4–19.0)	92	211	366	111.1%	23.0%
Pancreas	11	11	10	10.2 (8.5–12.3)	10.8 (9.2–12.6)	13.2 (11.7–14.8)	117	164	285	29.4%	22.2%

Rank is based on age-adjusted incidence rate. Age-adjusted incidence rates are per 100,000 population and age-adjusted to the 2000 United States standard population. Incidence count is the number of cancer occurrences. CI, confidence interval.

Table S6 Incidence rate changes from 1975–2016 of the 10 leading cancers by age group (60–69 years) in the United States

Cancer	Incidence rank			Age-adjusted incidence rate (95% CI)			Incidence count			Relative change in incidence (2016 vs. 1975)	Relative change in incidence (2016 vs. 2000)
	1975	2000	2016	1975	2000	2016	1975	2000	2016		
Male (60–69 years)											
All malignant cancers				1,385.7 (1,358.1–1,413.6)	1,994.6 (1,964.3–2,025.2)	1,546.1 (1,526.8–1,565.6)	9,670	16,579	24,507	11.6%	–22.5%
Prostate	2	1	1	243.2 (231.6–255.1)	783.0 (764.0–802.2)	512.5 (501.5–523.8)	1,677	6,502	8,117	110.7%	–34.5%
Lung and bronchus	1	2	2	331.8 (318.4–345.7)	304.8 (293.1–316.9)	178.5 (171.9–185.2)	2,317	2,535	2,824	–46.2%	–41.4%
Colon and rectum	3	3	3	199.9 (189.5–210.7)	198.9 (189.5–208.8)	118.2 (112.9–123.7)	1,394	1,653	1,877	–40.9%	–40.6%
Melanoma of the skin	14	6	4	16.9 (14.0–20.2)	63.9 (58.5–69.5)	87.7 (83.2–92.4)	120	531	1,391	418.9%	37.2%
Urinary bladder	4	4	5	98.0 (90.8–105.7)	113.0 (105.9–120.5)	84.0 (79.5–88.6)	686	939	1,327	–14.3%	–25.7%
Kidney and renal pelvis	10	7	6	31.0 (27.0–35.4)	61.0 (55.8–66.6)	67.9 (64.0–72.1)	217	509	1,078	119.0%	11.3%
Lymphoma	7	5	7	44.6 (39.8–49.8)	68.1 (62.6–73.9)	64.3 (60.4–68.3)	313	566	1,020	44.2%	–5.6%
Liver	16	14	8	12.4 (9.9–15.3)	22.3 (19.2–25.7)	57.8 (54.1–61.6)	86	186	920	366.1%	159.2%
Pancreas	6	9	9	49.8 (44.7–55.3)	45.2 (40.7–50.0)	46.2 (42.9–49.6)	348	375	732	–7.2%	2.2%
Leukaemia	8	8	10	39.8 (35.3–44.8)	45.5 (41.0–50.3)	45.5 (42.2–48.9)	279	378	721	14.3%	0.0%
Female (60–69 years)											
All malignant cancers				1,051.8 (1,029.6–1,074.3)	1,246.7 (1,224.3–1,269.5)	1,143.9 (1,128.1–1,159.9)	8,540	11,730	20,058	8.8%	–8.2%
Breast	1	1	1	279.8 (268.5–291.6)	414.5 (401.6–427.7)	382.4 (373.3–391.7)	2,273	3,900	6,708	36.7%	–7.7%
Lung and bronchus	4	2	2	90.8 (84.3–97.5)	197.7 (188.8–206.9)	138.4 (133.0–144.1)	738	1,860	2,425	52.4%	–30.0%
Corpus and uterus	3	4	3	138.5 (130.5–146.8)	90.2 (84.3–96.5)	110.8 (105.9–115.8)	1,131	849	1,944	–20.0%	22.8%
Colon and rectum	2	3	4	155.3 (146.8–164.1)	136.6 (129.2–144.2)	81.4 (77.3–85.8)	1,256	1,285	1,427	–47.6%	–40.4%
Melanoma of the skin	13	8	5	14.0 (11.5–16.8)	28.8 (25.5–32.4)	46.5 (43.3–49.8)	113	271	816	232.1%	61.5%
Lymphoma	7	5	6	29.0 (25.4–32.9)	45.6 (41.4–50.1)	45.4 (42.3–48.7)	235	429	796	56.6%	–0.4%
Pancreas	8	8	7	28.7 (25.1–32.7)	28.8 (25.5–32.4)	34.5 (31.8–37.4)	232	271	604	20.2%	19.8%
Thyroid	16	13	8	8.4 (6.6–10.7)	15.4 (13.0–18.1)	33.4 (30.8–36.2)	69	145	587	297.6%	116.9%
Kidney and renal pelvis	14	7	9	13.9 (11.5–16.7)	28.9 (25.6–32.6)	31.6 (29.0–34.3)	113	272	554	127.3%	9.3%
Ovary	5	6	10	47.7 (43.1–52.7)	42.2 (38.1–46.6)	28.9 (26.5–31.5)	388	397	507	–39.4%	–31.5%

Rank is based on age-adjusted incidence rate. Age-adjusted incidence rates are per 100,000 population and age-adjusted to the 2000 United States standard population. Incidence count is the number of cancer occurrences. CI, confidence interval.

Table S7 Incidence rate changes from 1975–2016 for the 10 leading cancers by age group (≥70 years) in the United States

Cancer	Incidence rank			Age-adjusted incidence rate (95% CI)			Incidence count			Relative change in incidence (2016 vs. 1975)	Relative change in incidence (2016 vs. 2000)
	1975	2000	2016	1975	2000	2016	1975	2000	2016		
Male (≥70 years)											
All malignant cancers				2,777.0 (2,728.9–2825.7)	3,220.3 (3,183.1–3,257.9)	2,492.0 (2,463.9–2,520.4)	13,390	28,992	30,378	–10.3%	–22.6%
Prostate	1	1	1	768.7 (743.1–794.9)	1,046.5 (1,025.5–1,067.9)	539.4 (526.5–552.6)	3,608	9,564	6,703	–29.8%	–48.5%
Lung and bronchus	3	2	2	443.2 (424.6–462.4)	506.1 (491.5–521.1)	391.4 (380.3–402.8)	2,245	4,589	4,732	–11.7%	–22.7%
Urinary bladder	4	4	3	228.8 (215.1–243.2)	267.3 (256.6–278.4)	247.5 (238.6–256.6)	1,084	2,372	2,978	8.2%	–7.4%
Colon and rectum	2	3	4	454.6 (435.1–474.7)	395.4 (382.3–408.9)	207.5 (199.4–215.8)	2,171	3,504	2,510	–54.4%	–47.5%
Melanoma of the skin	14	6	5	22.1 (18.0–26.8)	99.8 (93.3–106.7)	167.4 (160.2–174.9)	107	891	2,040	657.5%	67.7%
Lymphoma	8	5	6	63.5 (56.4–71.1)	125.7 (118.4–133.4)	131.3 (124.9–138.0)	312	1,126	1,592	106.8%	4.5%
Leukaemia	6	7	7	102.5 (93.3–112.4)	98.1 (91.6–105.0)	93.2 (87.8–98.8)	481	864	1,134	–9.1%	–5.0%
Pancreas	7	9	8	98.4 (89.6–107.9)	77.5 (71.8–83.6)	90.2 (84.9–95.8)	477	687	1,093	–8.3%	16.4%
Kidney and renal pelvis	9	8	9	45.5 (39.7–51.9)	81.3 (75.5–87.5)	89.7 (84.4–95.1)	231	735	1,100	97.1%	10.3%
Stomach	5	10	10	111.8 (102.2–122.1)	76.6 (70.9–82.7)	52.4 (48.4–56.7)	525	676	632	–53.1%	–31.6%
Female (≥70 years)											
All malignant cancers				1,459.1 (1,432.5–1,486.0)	1,839.3 (1,816.7–1,862.1)	1,715.6 (1,695.4–1,736.1)	11,543	25,504	28,185	17.6%	–6.7%
Breast	1	1	1	335.2 (322.6–348.3)	458.2 (446.9–469.7)	442.4 (432.1–452.9)	2,660	6,287	7,145	32.0%	–3.4%
Lung and bronchus	4	3	2	79.5 (73.4–86.0)	278.9 (270.1–288.0)	291.6 (283.2–300.2)	635	3,800	4,714	266.8%	4.6%
Colon and rectum	2	2	3	334.3 (321.6–347.4)	297.7 (288.7–306.9)	162.3 (156.2–168.6)	2,630	4,207	2,749	–51.5%	–45.5%
Corpus and uterus	3	4	4	88.0 (81.7–94.8)	90.0 (85.0–) 95.2	92.0 (87.3–96.9)	711	1,228	1,480	4.5%	2.2%
Lymphoma	9	5	5	48.9 (44.1–54.0)	86.5 (81.7–91.6)	86.3 (81.8–91.0)	387	1,205	1,426	76.5%	–0.2%
Pancreas	5	6	6	57.8 (52.6–63.4)	65.4 (61.3–69.8)	72.8 (68.8–77.1)	457	919	1,229	26.0%	11.3%
Melanoma of the skin	15	12	7	14.1 (11.6–16.9)	37.0 (33.8–40.3)	60.5 (56.8–64.4)	112	510	1,013	329.1%	63.5%
Urinary bladder	6	7	8	53.4 (48.4–58.8)	61.7 (57.7–66.0)	59.6 (55.9–63.5)	419	869	1,005	11.6%	–3.4%
Leukaemia	7	8	9	51.7 (46.7–57.0)	54.4 (50.6–58.4)	48.4 (45.0–51.9)	405	769	809	–6.4%	–11.0%
Kidney and renal pelvis	13	10	10	20.0 (17.0–23.3)	37.5 (34.3–40.9)	43.9 (40.7–47.3)	161	518	707	119.5%	17.1%

Rank is based on age-adjusted incidence rate. Age-adjusted incidence rates are per 100,000 population and age-adjusted to the 2000 United States standard population. Incidence count is the number of cancer occurrences. CI, confidence interval.

Table S8 Mortality rate changes from 1975–2016 of the 10 leading causes of cancer death in males by race and ethnicity in the United States

All causes	Mortality rank			Age-adjusted mortality rate (95% CI)			Death count			Relative change in mortality (2016 vs. 1975)	Relative change in mortality (2016 vs. 2000)
	1975	2000	2016	1975	2000	2016	1975	2000	2016		
Male white											
All malignant cancers				254.0 (252.7–255.3)	243.4 (242.4–244.3)	186.3 (185.6–187.0)	175,299	247,396	267,894	–26.7%	–23.5%
Lung and bronchus	1	1	1	75.5 (74.8–76.1)	75.4 (74.9–75.9)	47.1 (46.7–47.4)	56,237	78,700	68,968	–37.6%	–37.5%
Prostate	3	2	2	29.1 (28.6–29.5)	27.8 (27.4–28.1)	18.2 (18.0–18.4)	16,340	25,340	24,555	–37.5%	–34.5%
Colon and rectum	2	3	3	33.2 (32.8–33.7)	24.5 (24.1–24.8)	15.9 (15.7–16.1)	21,737	24,549	22,805	–52.1%	–35.1%
Pancreas	4	4	4	13.6 (13.3–13.9)	12.0 (11.8–12.2)	12.7 (12.5–12.9)	9,381	12,391	18,618	–6.6%	5.8%
Leukaemia	6	6	5	11.3 (11.0–11.6)	10.5 (10.3–10.7)	8.6 (8.5–8.8)	7,691	10,639	11,871	–23.9%	–18.1%
Urinary bladder	7	7	6	10.1 (9.8–10.4)	7.9 (7.8–8.1)	8.0 (7.8–8.2)	6,159	7,620	10,958	–20.8%	1.3%
Lymphoma	8	5	7	8.9 (8.7–9.1)	11.2 (11.0–11.4)	7.6 (7.4–7.7)	6,546	11,454	10,577	–14.6%	–32.1%
Oesophagus	9	8	8	5.4 (5.2–5.6)	7.6 (7.4–7.7)	7.4 (7.3–7.6)	3,889	7,986	11,127	37.0%	–2.6%
Liver	13	12	9	3.4 (3.2–3.5)	5.0 (4.9–5.1)	7.1 (7.0–7.2)	2,358	5,273	11,160	108.8%	42.0%
Brain and other nervous system	11	10	10	5.2 (5.0–5.4)	6.0 (5.8–6.1)	6.0 (5.8–6.1)	4,237	6,486	8,645	15.4%	0.0%
Male black											
All malignant cancers				320.5 (315.9–325.1)	341.2 (337.3–345.1)	221.6 (219.2–224.1)	21,884	32,815	35,707	–30.9%	–35.1%
Lung and bronchus	1	1	1	91.0 (88.7–93.3)	100.9 (98.8–102.9)	55.3 (54.1–56.6)	6,716	10,143	9,129	–39.2%	–45.2%
Prostate	2	2	2	55.5 (53.4–57.7)	68.9 (67.0–70.8)	38.4 (37.3–39.5)	3,018	5,346	5,088	–30.8%	–44.3%
Colon and rectum	3	3	3	30.1 (28.6–31.6)	35.0 (33.7–36.3)	23.0 (22.2–23.8)	1,905	3,316	3,786	–23.6%	–34.3%
Pancreas	6	4	4	16.3 (15.3–17.4)	15.8 (15.0–16.6)	14.9 (14.2–15.5)	1,141	1,561	2,503	–8.6%	–5.7%
Liver	11	9	5	6.1 (5.6–6.8)	8.6 (8.1–9.2)	11.2 (10.7–11.7)	457	966	2,231	83.6%	30.2%
Stomach	4	5	6	21.0 (19.9–22.3)	12.8 (12.0–13.5)	7.9 (7.5–8.4)	1,379	1,218	1,280	–62.4%	–38.3%
Myeloma	9	8	7	6.4 (5.8–7.1)	8.8 (8.1–9.4)	7.3 (6.8–7.8)	433	823	1,109	14.1%	–17.0%
Leukaemia	7	7	8	8.6 (7.8–9.3)	9.1 (8.5–9.7)	6.9 (6.4–7.3)	631	933	1,083	–19.8%	–24.2%
Urinary bladder	8	12	9	6.9 (6.2–7.6)	5.7 (5.2–6.2)	5.3 (4.9–5.7)	421	466	733	–23.2%	–7.0%
Oesophagus	5	6	10	17.0 (16.0–18.0)	10.9 (10.3–11.6)	5.2 (4.8–5.6)	1,267	1,170	908	–69.4%	–52.3%
Kidney and renal pelvis	13	11	10	4.1 (3.7–4.7)	6.3 (5.8–6.8)	5.2 (4.8–5.6)	295	632	854	26.8%	–17.5%
Male other race and ethnicity											
All malignant cancers				145.2 (137.1–153.6)	150.9 (146.8–155.2)	116.1 (113.8–118.3)	1,403	5,861	10,967	–20.0%	–23.1%
Lung and bronchus	1	1	1	35.4 (31.5–39.6)	41.0 (38.8–43.2)	28.8 (27.7–30.0)	344	1,567	2,678	–18.6%	–29.8%
Colon and rectum	2	2	2	19.1 (16.2–22.3)	16.4 (15.0–17.8)	10.8 (10.1–11.5)	177	619	1,051	–43.5%	–34.1%
Liver	4	4	3	9.7 (7.8–11.9)	13.2 (12.1–14.4)	10.3 (9.7–11.0)	102	604	1,067	6.2%	–22.0%
Prostate	5	3	4	9.4 (7.2–12.0)	13.7 (12.3–15.2)	9.2 (8.5–9.9)	68	392	727	–2.1%	–32.8%
Pancreas	6	6	5	8.9 (7.0–11.1)	7.6 (6.7–8.6)	8.2 (7.6–8.8)	84	285	778	–7.9%	7.9%
Stomach	3	5	6	17.8 (14.9–21.0)	11.4 (10.2–12.6)	6.6 (6.1–7.2)	158	422	617	–62.9%	–42.1%
Lymphoma	8	7	7	4.8 (3.5–6.3)	6.5 (5.7–7.4)	4.7 (4.3–5.2)	52	259	439	–2.1%	–27.7%
Leukaemia	7	8	8	5.2 (3.8–6.9)	5.1 (4.4–5.9)	4.2 (3.8–4.7)	60	231	406	–19.2%	–17.6%
Urinary bladder	11	11	9	2.9 (1.8–4.4)	2.4 (1.9–3.0)	3.1 (2.7–3.5)	24	77	250	6.9%	29.2%
Kidney and renal pelvis	10	9	10	3.1 (2.1–4.5)	3.3 (2.7–3.9)	3.0 (2.7–3.4)	31	142	296	–3.2%	–9.1%

Rank is based on the age-adjusted mortality rate. Age-adjusted mortality rates are per 100,000 population and age-adjusted to the 2000 United States standard population. Death count is the number of cancer deaths. Other race and ethnicity includes American Indian/AK Native, Asian/Pacific Islander. CI, confidence interval.

Table S9 Mortality rate changes from 1975–2016 of the 10 leading causes of cancer death in females by race and ethnicity in the United States

All causes	Mortality rank			Age-adjusted mortality rate (95% CI)			Death count			Relative change in mortality (2016 vs. 1975)	Relative change in mortality (2016 vs. 2000)
	1975	2000	2016	1975	2000	2016	1975	2000	2016		
Female white											
All malignant cancers				159.0 (158.2–159.8)	166.0 (165.3–166.7)	134.7 (134.2–135.3)	148,711	232,608	238,072	–15.3%	–18.9%
Lung and bronchus	3	1	1	17.7 (17.4–17.9)	42.1 (41.7–42.4)	33.2 (32.9–33.5)	16,883	58,133	59,158	87.6%	–21.1%
Breast	1	2	2	31.8 (31.4–32.2)	26.2 (25.9–26.4)	19.6 (19.4–19.8)	29,313	35,767	33,749	–38.4%	–25.2%
Colon and rectum	2	3	3	25.1 (24.7–25.4)	17.0 (16.8–17.2)	11.3 (11.1–11.4)	23,333	24,913	20,155	–55.0%	–33.5%
Pancreas	5	5	4	8.3 (8.1–8.5)	9.0 (8.8–9.2)	9.5 (9.4–9.7)	7,876	12,909	17,262	14.5%	5.6%
Ovary	4	4	5	10.2 (10.0–10.4)	9.2 (9.1–9.4)	7.0 (6.9–7.2)	9,610	12,731	12,290	–31.4%	–23.9%
Leukaemia	6	7	6	6.3 (6.1–6.5)	6.0 (5.9–6.2)	4.9 (4.8–5.0)	5,836	8,599	8,608	–22.2%	–18.3%
Lymphoma	7	6	7	5.9 (5.7–6.0)	7.4 (7.3–7.6)	4.6 (4.5–4.7)	5,532	10,594	8,298	–22.0%	–37.8%
Corpus and uterus	9	9	7	5.1 (4.9–5.2)	3.8 (3.7–3.9)	4.6 (4.5–4.7)	4,832	5,397	8,229	–9.8%	21.1%
Brain and other nervous system	11	8	9	3.6 (3.5–3.7)	3.9 (3.8–4.0)	4.0 (3.9–4.1)	3,454	5,186	6,584	11.1%	2.6%
Myeloma	14	10	10	2.2 (2.1–2.3)	3.0 (2.9–3.1)	2.4 (2.3–2.4)	2,137	4,247	4,262	9.1%	–20.0%
Female black											
All malignant cancers				174.2 (171.4–177.0)	193.2 (191.0–195.5)	151.3 (149.7–153.0)	15,747	29,127	34,919	–13.1%	–21.7%
Lung and bronchus	3	1	1	17.3 (16.5–18.2)	39.6 (38.6–40.7)	29.8 (29.1–30.5)	1,602	5,910	6,880	72.3%	–24.7%
Breast	1	2	2	29.5 (28.4–30.7)	34.4 (33.4–35.3)	27.3 (26.6–28.0)	2,692	5,361	6,333	–7.5%	–20.6%
Colon and rectum	2	3	3	24.6 (23.5–25.7)	23.9 (23.1–) 24.7	15.1 (14.6–15.6)	2,108	3,536	3,472	–38.6%	–36.8%
Pancreas	5	4	4	10.1 (9.5–10.8)	12.7 (12.1–13.3)	12.1 (11.7–12.6)	912	1,858	2,774	19.8%	–4.7%
Corpus and uterus	7	5	5	7.8 (7.2–8.4)	7.2 (6.8–7.7)	8.7 (8.3–9.1)	710	1,060	2,067	11.5%	20.8%
Ovary	8	6	6	7.2 (6.6–7.7)	7.1 (6.7–7.6)	5.6 (5.3–) 5.9	681	1,073	1,328	–22.2%	–21.1%
Myeloma	10	7	7	4.4 (4.0–4.9)	6.7 (6.3–7.2)	5.1 (4.8–5.4)	396	989	1,126	15.9%	–23.9%
Leukaemia	9	10	8	5.1 (4.7–5.6)	5.3 (4.9–5.6)	4.5 (4.2–4.8)	496	820	1,008	–11.8%	–15.1%
Stomach	6	8	9	8.6 (8.0–9.3)	6.5 (6.1–6.9)	3.5 (3.3–3.8)	732	958	786	–59.3%	–46.2%
Liver	14	13	9	2.6 (2.3–3.0)	2.8 (2.6–3.1)	3.5 (3.3–3.8)	224	423	855	34.6%	25.0%
Female other race and ethnicity											
All malignant cancers				98.8 (92.6–105.4)	100.7 (97.9–103.6)	84.8 (83.2–86.5)	1,051	5,273	10,472	–14.2%	–15.8%
Lung and bronchus	4	1	1	9.6 (7.7–11.7)	19.1 (17.9–20.4)	17.0 (16.3–17.8)	99	973	2,056	77.1%	–11.0%
Breast	1	2	2	13.1 (11.0–15.4)	12.3 (11.4–13.3)	10.8 (10.2–11.4)	153	744	1,405	–17.6%	–12.2%
Colon and rectum	2	3	3	11.9 (9.7–14.3)	10.0 (9.2–11.0)	8.2 (7.7–8.7)	112	501	1,017	–31.1%	–18.0%
Pancreas	6	4	4	4.5 (3.2–6.1)	6.8 (6.1–7.6)	6.9 (6.4–7.3)	43	327	822	53.3%	1.5%
Ovary	7	8	5	4.1 (3.0–5.5)	4.5 (4.0–5.2)	4.7 (4.3–5.1)	49	256	605	14.6%	4.4%
Stomach	3	5	6	10.5 (8.5–12.8)	6.6 (5.9–7.4)	3.9 (3.5–4.2)	109	324	478	–62.9%	–40.9%
Liver	13	6	7	1.9 (1.2–2.9)	5.6 (4.9–6.3)	3.6 (3.2–4.0)	22	285	426	89.5%	–35.7%
Corpus and uterus	11	11	8	2.6 (1.7–3.7)	2.3 (1.9–2.8)	3.3 (3.0–3.7)	28	128	437	26.9%	43.5%
Lymphoma	10	7	9	3.0 (2.0–4.3)	4.6 (4.0–5.3)	3.0 (2.7–3.4)	32	230	356	0.0%	–34.8%
Leukaemia	8	9	10	3.4 (2.3–4.8)	3.2 (2.7–3.7)	2.5 (2.2–2.8)	40	175	311	–26.5%	–21.9%

Rank is based on the age-adjusted mortality rate. Age-adjusted mortality rates are per 100,000 population and age-adjusted to the 2000 United States standard population. Death count is the number of cancer deaths. CI, confidence interval. Other race and ethnicity includes American Indian/AK Native, Asian/Pacific Islander.

Table S10 Mortality rate changes from 1975–2016 of the 10 leading causes of cancer death by age group (birth–39 years) in the United States

All causes	Mortality rank			Age-adjusted mortality rate (95% CI)			Death count			Relative change in mortality (2016 vs. 1975)	Relative change in mortality (2016 vs. 2000)
	1975	2000	2016	1975	2000	2016	1975	2000	2016		
Male (Birth–39 years)											
All malignant cancers				12.0 (11.7–12.3)	7.5 (7.3–7.7)	6.1 (5.9–6.3)	7,138	6,130	5,144	–49.2%	–18.7%
Brain and other nervous system	3	2	1	1.4 (1.3–1.4)	1.1 (1.1–1.2)	1.0 (0.9–1.1)	845	933	852	–28.6%	–9.1%
Leukaemia	1	1	2	2.2 (2.1–2.4)	1.3 (1.2–1.3)	0.9 (0.9–1.0)	1,529	1,041	806	–59.1%	–30.8%
Colon and rectum	5	5	3	0.8 (0.7–0.9)	0.5 (0.5–0.6)	0.6 (0.6–0.7)	395	442	494	–25.0%	20.0%
Lymphoma	2	3	4	1.7 (1.6–1.8)	0.8 (0.8–0.9)	0.4 (0.3–0.4)	1,097	683	337	–76.5%	–50.0%
Soft tissue including heart	9	6	4	0.3 (0.3–0.4)	0.4 (0.3–0.4)	0.4 (0.3–0.4)	196	301	319	33.3%	0.0%
Lung and bronchus	4	4	6	1.3 (1.2–1.4)	0.6 (0.6–0.7)	0.3 (0.2–0.3)	576	487	215	–76.9%	–50.0%
Bones and joints	8	7	6	0.4 (0.3–0.4)	0.3 (0.2–0.3)	0.3 (0.3–0.3)	263	234	270	–25.0%	0.0%
Testis	6	9	8	0.7 (0.7–0.8)	0.2 (0.2–0.3)	0.2 (0.2–0.2)	473	183	188	–71.4%	0.0%
Melanoma of the skin	6	7	8	0.7 (0.6–0.8)	0.3 (0.3–0.3)	0.2 (0.2–0.2)	369	250	162	–71.4%	–33.3%
Pancreas	9	9	8	0.3 (0.2–0.3)	0.2 (0.1–0.2)	0.2 (0.1–0.2)	129	125	127	–33.3%	0.0%
Kidney and renal pelvis	11	13	8	0.2 (0.2–0.3)	0.1 (0.1–0.2)	0.2 (0.2–0.2)	132	113	148	0.0%	100.0%
Liver	11	9	8	0.2 (0.2–0.2)	0.2 (0.2–0.2)	0.2 (0.1–0.2)	120	152	143	0.0%	0.0%
Stomach	11	9	8	0.2 (0.2–0.3)	0.2 (0.2–0.2)	0.2 (0.2–0.2)	119	175	174	0.0%	0.0%
Female (Birth–39 years)											
All malignant cancers				12.2 (11.9–12.5)	8.2 (8.0–8.4)	6.8 (6.6–6.9)	6,864	6,590	5,473	–44.3%	–17.1%
Breast	1	1	1	2.6 (2.5–2.8)	1.8 (1.7–1.9)	1.5 (1.4–1.6)	1,283	1,445	1,158	–42.3%	–16.7%
Leukaemia	2	2	2	1.7 (1.6–1.8)	0.9 (0.9–1.0)	0.7 (0.6–0.7)	1,155	754	561	–58.8%	–22.2%
Brain and other nervous system	3	3	2	1.0 (0.9–1.1)	0.7 (0.7–0.8)	0.7 (0.7–0.8)	644	592	609	–30.0%	0.0%
Cervix uteri	5	3	4	0.9 (0.9–1.0)	0.7 (0.6–0.7)	0.6 (0.5–0.6)	487	542	471	–33.3%	–14.3%
Colon and rectum	7	7	5	0.6 (0.5–0.7)	0.4 (0.4–0.5)	0.5 (0.5–0.6)	303	340	420	–16.7%	25.0%
Ovary	7	8	6	0.6 (0.5–0.7)	0.3 (0.3–0.4)	0.3 (0.2–0.3)	333	271	230	–50.0%	0.0%
Soft tissue including heart	11	8	6	0.2 (0.2–0.3)	0.3 (0.3–0.3)	0.3 (0.2–0.3)	158	240	229	50.0%	0.0%
Lymphoma	3	5	8	1.0 (0.9–1.0)	0.5 (0.5–0.6)	0.2 (0.2–0.2)	597	439	162	–80.0%	–60.0%
Lung and bronchus	6	5	8	0.7 (0.6–0.7)	0.5 (0.4–0.5)	0.2 (0.2–0.3)	303	399	190	–71.4%	–60.0%
Bones and joints	10	11	8	0.3 (0.2–0.3)	0.2 (0.2–0.2)	0.2 (0.2–0.2)	200	142	162	–33.3%	0.0%
Stomach	11	11	8	0.2 (0.2–0.2)	0.2 (0.1–0.2)	0.2 (0.2–0.2)	101	131	163	0.0%	0.0%
Corpus and uterus	14	13	8	0.1 (0.1–0.2)	0.1 (0.1–0.1)	0.2 (0.1–0.2)	60	71	121	100.0%	100.0%

Rank is based on the age-adjusted mortality rate. Age-adjusted mortality rates are per 100,000 population and age-adjusted to the 2000 United States standard population. Death count is the number of cancer deaths. CI, confidence interval.

Table S11 Mortality rate changes from 1975–2016 of the 10 leading causes of cancer death by age group (40–49 years) in the United States

All causes	Mortality rank			Age-adjusted mortality rate (95% CI)			Death count			Relative change in mortality (2016 vs. 1975)	Relative change in mortality (2016 vs. 2000)
	1975	2000	2016	1975	2000	2016	1975	2000	2016		
Male (40–49 years)											
All malignant cancers				96.5 (94.7–98.3)	67.0 (65.9–68.1)	43.6 (42.7–44.5)	11,113	14,185	9,070	–54.8%	–34.9%
Colon and rectum	2	2	1	8.6 (8.1–9.1)	6.5 (6.1–6.8)	7.1 (6.8–7.5)	989	1,368	1,479	–17.4%	9.2%
Lung and bronchus	1	1	2	35.6 (34.5–36.7)	17.5 (16.9–18.1)	6.6 (6.3–7.0)	4,118	3,706	1,392	–81.5%	–62.3%
Brain and other nervous system	4	3	3	5.0 (4.6–5.4)	4.2 (3.9–4.5)	3.5 (3.3–3.8)	570	892	727	–30.0%	–16.7%
Pancreas	6	5	4	4.3 (3.9–4.6)	3.6 (3.4–3.9)	3.1 (2.9–3.3)	491	768	648	–27.9%	–13.9%
Oesophagus	8	7	5	3.1 (2.8–3.4)	2.9 (2.7–3.1)	2.2 (2.0–2.4)	358	611	450	–29.0%	–24.1%
Leukaemia	5	8	6	4.4 (4.0–4.8)	2.8 (2.6–3.1)	2.0 (1.8–2.2)	500	598	404	–54.5%	–28.6%
Lymphoma	3	4	7	5.4 (5.0–5.9)	4.0 (3.7–4.3)	1.9 (1.8–2.1)	615	842	400	–64.8%	–52.5%
Stomach	7	11	7	3.7 (3.3–4.0)	2.2 (2.0–2.5)	1.9 (1.7–2.1)	421	474	386	–48.6%	–13.6%
Kidney and renal pelvis	9	10	9	2.9 (2.6–3.3)	2.3 (2.1–2.5)	1.7 (1.5–1.9)	339	484	355	–41.4%	–26.1%
Melanoma of the skin	9	9	10	2.9 (2.6–3.2)	2.6 (2.4–2.9)	1.5 (1.3–1.7)	330	558	307	–48.3%	–42.3%
Liver	13	6	10	1.1 (0.9–1.3)	3.5 (3.2–3.7)	1.5 (1.4–1.7)	126	731	324	36.4%	–57.1%
Female (40–49 years)											
All malignant cancers				106.5 (104.7–108.4)	71.8 (70.7–72.9)	54.4 (53.4–55.4)	12,884	15,573	11,477	–48.9%	–24.2%
Breast	1	1	1	33.1 (32.0–34.1)	21.0 (20.4–21.7)	15.1 (14.6–15.7)	3,988	4,564	3,176	–54.4%	–28.1%
Lung and bronchus	2	2	2	15.4 (14.7–16.1)	12.0 (11.5–12.4)	5.8 (5.5–6.2)	1,869	2,598	1,262	–62.3%	–51.7%
Colon and rectum	4	3	3	8.3 (7.8–8.8)	5.2 (4.9–5.5)	5.6 (5.3–5.9)	997	1,128	1,178	–32.5%	7.7%
Cervix uteri	5	5	4	7.7 (7.2–8.2)	3.9 (3.7–4.2)	3.4 (3.2–3.7)	913	848	707	–55.8%	–12.8%
Ovary	3	4	5	8.6 (8.1–9.1)	4.3 (4.1–4.6)	3.1 (2.9–3.3)	1,051	944	656	–64.0%	–27.9%
Brain and other nervous system	6	6	6	3.2 (2.9–3.6)	2.6 (2.4–2.8)	2.5 (2.3–2.7)	387	565	517	–21.9%	–3.8%
Pancreas	9	8	7	2.4 (2.2–2.7)	2.2 (2.0–2.4)	2.2 (2.0–2.4)	297	474	478	–8.3%	0.0%
Corpus and uterus	11	12	8	2.0 (1.7–2.3)	1.3 (1.2–1.5)	1.8 (1.7–2.0)	242	287	389	–10.0%	38.5%
Leukaemia	6	9	9	3.2 (2.9–3.5)	2.1 (1.9–2.3)	1.7 (1.5–1.9)	380	462	355	–46.9%	–19.0%
Stomach	10	11	10	2.2 (2.0–2.5)	1.4 (1.3–1.6)	1.4 (1.2–1.5)	271	311	285	–36.4%	0.0%

Rank is based on the age-adjusted mortality rate. Age-adjusted mortality rates are per 100,000 population and age-adjusted to the 2000 United States standard population. Death count is the number of cancer deaths. CI, confidence interval.

Table S12 Mortality rate changes from 1975–2016 of the 10 leading causes of cancer death by age group (50–59 years) in the United States

All causes	Mortality rank			Age-adjusted mortality rate (95% CI)			Death count			Relative change in mortality (2016 vs. 1975)	Relative change in mortality (2016 vs. 2000)
	1975	2000	2016	1975	2000	2016	1975	2000	2016		
Male (50–59 years)											
All malignant cancers				309.3 (306.0–312.6)	236.0 (233.6–238.5)	180.0 (178.2–181.8)	33,872	35,884	40,157	–41.8%	–23.7%
Lung and bronchus	1	1	1	123.2 (121.1–125.3)	79.8 (78.4–81.2)	45.3 (44.4–46.2)	13,485	12,121	10,196	–63.2%	–43.2%
Colon and rectum	2	2	2	30.6 (29.6–31.6)	22.6 (21.8–23.3)	20.1 (19.5–20.7)	3,354	3,433	4,409	–34.3%	–11.1%
Pancreas	3	4	3	16.4 (15.6–17.2)	14.2 (13.6–14.8)	13.9 (13.4–14.4)	1,794	2,161	3,099	–15.2%	–2.1%
Liver	14	7	4	4.4 (4.0–4.8)	8.7 (8.2–9.1)	13.3 (12.8–13.8)	485	1,318	3,012	202.3%	52.9%
Oesophagus	6	5	5	11.5 (10.9–12.2)	11.4 (10.9–12.0)	9.2 (8.8–9.6)	1,262	1,734	2,049	–20.0%	–19.3%
Brain and other nervous system	7	7	6	10.1 (9.5–10.7)	8.7 (8.2–9.2)	8.3 (8.0–8.7)	1,101	1,327	1,835	–17.8%	–4.6%
Kidney and renal pelvis	9	9	7	8.5 (7.9–9.0)	8.5 (8.1–9.0)	6.0 (5.7–6.3)	924	1,298	1,328	–29.4%	–29.4%
Prostate	10	12	8	7.6 (7.0–8.1)	5.8 (5.5–6.2)	5.7 (5.3–6.0)	844	886	1,293	–25.0%	–1.7%
Lymphoma	5	6	9	11.8 (11.1–12.4)	10.5 (10.0–11.0)	5.6 (5.2–5.9)	1,285	1,594	1,223	–52.5%	–46.7%
Stomach	4	11	10	12.4 (11.8–13.1)	6.0 (5.7–6.4)	4.9 (4.6–5.2)	1,357	919	1,084	–60.5%	–18.3%
Leukaemia	8	10	10	9.1 (8.6–9.7)	7.0 (6.6–7.5)	4.9 (4.6–5.2)	1,003	1,068	1,081	–46.2%	–30.0%
Female (50–59 years)											
All malignant cancers				251.9 (249.1–254.8)	200.7 (198.5–202.9)	157.9 (156.3–159.6)	30,198	32,277	36,598	–37.3%	–21.3%
Lung and bronchus	2	1	1	39.4 (38.3–40.5)	49.8 (48.7–50.9)	35.8 (35.1–36.6)	4,729	8,015	8,414	–9.1%	–28.1%
Breast	1	2	2	64.4 (63.0–65.9)	45.8 (44.8–46.9)	31.6 (30.9–32.4)	7,682	7,373	7,229	–50.9%	–31.0%
Colon and rectum	3	3	3	26.6 (25.7–27.5)	15.5 (14.9–16.1)	13.7 (13.2–14.2)	3,205	2,491	3,150	–48.5%	–11.6%
Pancreas	6	5	4	9.8 (9.3–10.4)	8.7 (8.2–9.2)	9.6 (9.2–10.0)	1,190	1,397	2,247	–2.0%	10.3%
Ovary	4	4	5	20.7 (19.9–21.6)	13.0 (12.4–13.6)	9.2 (8.8–9.6)	2,473	2,089	2,121	–55.6%	–29.2%
Corpus and uterus	8	9	6	7.1 (6.6–7.5)	4.9 (4.6–5.3)	6.2 (5.9–6.5)	853	795	1,447	–12.7%	26.5%
Brain and other nervous system	9	7	7	6.9 (6.4–7.4)	5.5 (5.2–5.9)	5.1 (4.8–5.4)	825	892	1,181	–26.1%	–7.3%
Cervix uteri	5	7	8	10.8 (10.2–11.4)	5.5 (5.1–5.9)	4.4 (4.1–4.7)	1,278	883	991	–59.3%	–20.0%
Leukaemia	10	10	9	6.1 (5.7–6.6)	4.8 (4.5–5.2)	3.3 (3.1–3.6)	735	772	770	–45.9%	–31.3%
Liver	16	15	10	2.2 (1.9–2.5)	2.0 (1.8–2.3)	3.0 (2.8–3.2)	262	327	714	36.4%	50.0%

Rank is based on the age-adjusted mortality rate. Age-adjusted mortality rates are per 100,000 population and age-adjusted to the 2000 United States standard population. Death count is the number of cancer deaths. CI, confidence interval.

Table S13 Mortality rate changes from 1975–2016 of the 10 leading causes of cancer death by age group (60–69 years) in the United States

All causes	Mortality rank			Age-adjusted mortality rate (95% CI)			Death count			Relative change in mortality (2016 vs. 1975)	Relative change in mortality (2016 vs. 2000)
	1975	2000	2016	1975	2000	2016	1975	2000	2016		
Male (60–69 years)											
All malignant cancers				763.3 (757.2–769.5)	674.4 (669.2–679.6)	485.4 (482.1–488.7)	59,858	64,245	83,485	–36.4%	–28.0%
Lung and bronchus	1	1	1	290.0 (286.2–293.8)	257.9 (254.7–261.2)	136.2 (134.4–137.9)	22,773	24,566	23,414	–53.0%	–47.2%
Colon and rectum	2	2	2	86.0 (84.0–88.1)	63.2 (61.6–64.8)	42.1 (41.2–43.1)	6,729	6,021	7,250	–51.0%	–33.4%
Pancreas	4	4	3	44.0 (42.5–45.5)	36.8 (35.6–38.0)	38.0 (37.1–39.0)	3,450	3,508	6,538	–13.6%	3.3%
Liver	12	9	4	12.3 (11.5–13.1)	16.6 (15.8–17.5)	34.0 (33.1–34.8)	964	1,586	5,861	176.4%	104.8%
Prostate	3	3	5	51.6 (50.1–53.3)	39.7 (38.5–41.0)	29.0 (28.2–29.8)	4,015	3,772	4,973	–43.8%	–27.0%
Oesophagus	7	5	6	22.3 (21.3–23.4)	26.5 (25.5–27.6)	23.6 (22.8–24.3)	1,753	2,530	4,052	5.8%	–10.9%
Brain and other nervous system	11	11	7	16.2 (15.3–17.1)	15.8 (15.0–16.6)	15.4 (14.9–16.0)	1,279	1,508	2,660	–4.9%	–2.5%
Leukaemia	8	7	8	22.0 (20.9–23.0)	22.2 (21.3–23.2)	15.3 (14.7–15.9)	1,721	2,116	2,620	–30.5%	–31.1%
Kidney and renal pelvis	10	8	9	16.9 (16.1–17.9)	18.3 (17.4–19.2)	15.0 (14.4–15.6)	1,332	1,745	2,576	–11.2%	–18.0%
Lymphoma	6	6	10	23.0 (21.9–24.1)	25.6 (24.6–26.7)	14.9 (14.3–15.4)	1,806	2,441	2,554	–35.2%	–41.8%
Female (60–69 years)											
All malignant cancers				446.0 (441.8–450.3)	476.7 (472.6–480.8)	348.9 (346.2–351.5)	42,026	51,673	66,445	–21.8%	–26.8%
Lung and bronchus	3	1	1	62.5 (60.9–64.1)	148.7 (146.4–151.0)	90.3 (89.0–91.7)	5,891	16,121	17,201	44.5%	–39.3%
Breast	1	2	2	87.0 (85.1–88.9)	72.3 (70.7–73.9)	52.3 (51.3–53.4)	8,198	7,830	9,971	–39.9%	–27.7%
Pancreas	5	5	3	26.0 (25.0–27.0)	25.0 (24.1–26.0)	26.5 (25.8–27.3)	2,449	2,716	5,052	1.9%	6.0%
Colon and rectum	2	3	4	63.1 (61.5–64.7)	40.7 (39.5–41.9)	26.0 (25.3–26.7)	5,939	4,408	4,951	–58.8%	–36.1%
Ovary	4	4	5	31.4 (30.3–32.6)	27.6 (26.6–28.6)	19.9 (19.3–20.6)	2,962	2,990	3,799	–36.6%	–27.9%
Corpus and uterus	6	7	6	17.6 (16.8–18.5)	13.3 (12.6–14.0)	18.2 (17.6–18.8)	1,658	1,444	3,460	3.4%	36.8%
Brain and other nervous system	10	9	7	11.3 (10.6–12.0)	10.4 (9.8–11.0)	10.5 (10.1–11.0)	1,065	1,128	2,006	–7.1%	1.0%
Leukaemia	10	8	8	11.3 (10.6–12.0)	12.4 (11.7–13.1)	8.6 (8.2–9.0)	1,060	1,342	1,635	–23.9%	–30.6%
Lymphoma	7	6	9	14.8 (14.1–15.6)	17.2 (16.4–18.0)	7.9 (7.5–8.3)	1,398	1,867	1,510	–46.6%	–54.1%
Liver	16	15	10	5.1 (4.6–5.5)	5.4 (5.0–5.9)	7.6 (7.2–8.0)	478	589	1,454	49.0%	40.7%

Rank is based on the age-adjusted mortality rate. Age-adjusted mortality rates are per 100,000 population and age-adjusted to the 2000 United States standard population. Death count is the number of cancer deaths. CI, confidence interval.

Table S14 Mortality rate changes from 1975–2016 of the 10 leading causes of cancer death by age group (≥70 years) in the United States

All causes	Mortality rank			Age-adjusted mortality rate (95% CI)			Death count			Relative change in mortality (2016 vs. 1975)	Relative change in mortality (2016 vs. 2000)
	1975	2000	2016	1975	2000	2016	1975	2000	2016		
Male (≥70 years)											
All malignant cancers				1,591.3 (1,580.4–1,602.3)	1,719.0 (1,710.6–1,727.4)	1,305.1 (1,299.0–1,311.2)	86,605	165,628	176,712	–18.0%	–24.1%
Lung and bronchus	1	1	1	383.2 (378.1–388.4)	496.3 (491.9–500.8)	334.0 (330.9–337.1)	22,345	49,530	45,558	–12.8%	–32.7%
Prostate	2	2	2	285.0 (280.2–289.8)	290.3 (286.8–293.9)	179.9 (177.6–182.2)	14,488	26,286	24,009	–36.9%	–38.0%
Colon and rectum	3	3	3	232.3 (228.0–236.5)	180.7 (178.0–183.5)	103.6 (101.9–105.3)	12,352	17,220	14,010	–55.4%	–42.7%
Pancreas	4	4	4	86.1 (83.6–88.7)	78.5 (76.7–80.3)	84.4 (82.9–86.0)	4,742	7,675	11,487	–2.0%	7.5%
Urinary bladder	6	7	5	80.6 (78.1–83.2)	65.0 (63.3–66.6)	66.8 (65.4–68.2)	4,203	6,020	8,924	–17.1%	2.8%
Leukaemia	7	5	6	69.5 (67.2–71.9)	73.0 (71.2–74.7)	62.8 (61.5–64.2)	3,629	6,980	8,449	–9.6%	–14.0%
Lymphoma	8	6	7	41.3 (39.5–43.1)	72.0 (70.3–73.7)	54.7 (53.4–55.9)	2,279	6,938	7,365	32.4%	–24.0%
Oesophagus	9	9	8	31.9 (30.3–33.4)	43.2 (41.9–44.6)	41.4 (40.3–42.5)	1,789	4,301	5,672	29.8%	–4.2%
Liver	12	12	9	22.1 (20.8–23.4)	30.8 (29.7–31.9)	37.3 (36.3–38.3)	1,222	3,056	5,118	68.8%	21.1%
Kidney and renal pelvis	10	10	10	26.2 (24.8–27.6)	37.2 (36.0–38.5)	33.8 (32.9–34.8)	1,472	3,609	4,589	29.0%	–9.1%
Female (≥70 years)											
All malignant cancers				826.1 (820.1–832.2)	1,018.8 (1,013.8–1,023.8)	854.1 (849.9–858.3)	73,537	160,895	163,470	3.4%	–16.2%
Lung and bronchus	3	1	1	63.8 (62.2–65.5)	245.2 (242.8–247.7)	220.3 (218.2–222.5)	5,792	37,883	41,027	245.3%	–10.2%
Breast	2	2	2	123.1 (120.8–125.4)	130.3 (128.5–132.1)	103.3 (101.9–104.8)	11,007	20,660	19,953	–16.1%	–20.7%
Colon and rectum	1	3	3	171.4 (168.6–174.1)	127.7 (126.0–129.5)	75.4 (74.2–76.7)	15,109	20,583	14,945	–56.0%	–41.0%
Pancreas	4	4	4	54.0 (52.5–55.5)	66.0 (64.7–67.2)	68.1 (66.9–69.3)	4,824	10,428	12,993	26.1%	3.2%
Ovary	6	5	5	38.7 (37.4–40.0)	49.6 (48.5–50.7)	39.6 (38.7–40.5)	3,521	7,766	7,417	2.3%	–20.2%
Lymphoma	9	6	6	28.8 (27.7–29.9)	48.5 (47.5–49.6)	34.8 (34.0–35.7)	2,584	7,710	6,824	20.8%	–28.2%
Leukaemia	7	7	7	34.5 (33.3–35.7)	39.1 (38.2–40.1)	33.7 (32.9–34.5)	3,042	6,264	6,606	–2.3%	–13.8%
Corpus and uterus	8	8	8	30.7 (29.6–31.9)	25.3 (24.5–26.1)	28.4 (27.6–29.2)	2,757	3,988	5,316	–7.5%	12.3%
Myeloma	12	9	9	14.5 (13.7–15.3)	23.1 (22.3–23.8)	20.2 (19.5–20.8)	1,308	3,639	3,853	39.3%	–12.6%
Urinary bladder	10	11	10	22.5 (21.5–23.5)	18.9 (18.3–19.6)	18.3 (17.7–18.9)	1,950	3,075	3,664	–18.7%	–3.2%

Rank is based on the age-adjusted mortality rate. Age-adjusted mortality rates are per 100,000 population and age-adjusted to the 2000 United States standard population. Death count is the number of cancer deaths. CI, confidence interval.

Table S15 One-year relative survival rates for 20 leading cancers [2016] by sex in the United States, 2010–2016

Incidence rank [2016]	Cancer	One-year relative survival rates (95% CI)				NO.			
		All races	White	Black	Other	All races	White	Black	Other
Male									
	All malignant cancers	80.9% (80.8–81.1%)	81.4% (81.2–81.5%)	79.2% (78.8–79.6%)	76.0% (75.5–76.5%)	404,243	318,681	44,713	34,724
1	Prostate	99.3% (99.2–99.4%)	99.4% (99.3–99.5%)	98.9% (98.6–99.2%)	98.7% (98.2–99.1%)	116,247	87,951	17,745	7,776
2	Lung and bronchus	43.4% (42.9–43.9%)	43.1% (42.5–43.6%)	42.6% (41.1–44.0%)	46.4% (44.9–48.0%)	44,679	34,733	5,207	4,587
3	Colon and rectum	85.0% (84.6–85.4%)	84.9% (84.4–85.4%)	82.5% (81.1–83.7%)	86.9% (85.8–87.9%)	35,887	26,882	4,064	4,581
4	Urinary bladder	91.1% (90.6–91.5%)	91.5% (91.0–91.9%)	84.2% (81.7–86.4%)	88.9% (86.8–90.7%)	24,674	21,781	1,200	1,401
5	Melanoma of the skin	97.5% (97.1–97.7%)	97.4% (97.1–97.7%)	92.1%# (78.0#–97.3%#)	91.6% (86.6–94.7%)	21,934	20,853	61	243
6	Lymphoma	84.8% (84.3–85.3%)	85.5% (84.9–86.1%)	80.8% (78.8–82.5%)	80.3% (78.4–82.1%)	22,197	17,799	2,055	2,023
7	Kidney and renal pelvis	86.9% (86.3–87.4%)	87.0% (86.3–87.6%)	86.1% (84.3–87.7%)	85.9% (83.8–87.7%)	16,941	13,350	1,973	1,447
8	Leukaemia	80.4% (79.6–81.1%)	81.0% (80.2–81.8%)	79.2% (76.3–81.7%)	70.9% (68.0–73.7%)	13,558	11,211	1,030	1,064
9	Pancreas	34.4% (33.5–35.3%)	34.7% (33.6–35.7%)	32.8% (30.1–35.6%)	33.1% (30.2–36.0%)	11,392	8,915	1,287	1,145
10	Liver	50.5% (49.5–51.4%)	51.0% (49.8–52.2%)	45.1% (42.7–47.5%)	52.7% (50.4–54.9%)	11,439	7,423	1,785	2,163
11	Myeloma	82.3% (81.3–83.3%)	82.1% (80.9–83.3%)	82.8% (80.2–85.0%)	82.1% (78.4–85.2%)	6,800	4,947	1,209	581
12	Stomach	57.5% (56.3–58.7%)	56.8% (55.3–58.2%)	53.9% (50.4–57.3%)	62.4% (59.5–65.2%)	7,345	5,057	938	1,302
13	Thyroid	97.5% (97.0–98.0%)	97.8%# (97.2#–98.2%#)	95.3% (91.6–97.4%)	96.3% (94.3–97.5%)	6,475	5,315	320	736
14	Brain and other nervous system	63.0% (61.7–64.2%)	61.7% (60.4–63.0%)	70.2% (65.5–74.5%)	67.9% (63.4–71.8%)	6,817	5,766	453	531
14	Oesophagus	51.0% (49.6–52.3%)	52.3% (50.8–53.7%)	41.9% (36.9–46.8%)	43.9% (38.7–48.9%)	6,119	5,221	446	426
16	Testis	98.2% (97.8–98.5%)	98.4% (97.9–98.7%)	94.3% (89.4–96.9%)	97.3%# (95.1#–98.5%#)	5,838	5,079	190	450
17	Tongue	88.2% (87.1–89.2%)	89.1% (88.0–90.1%)	74.9% (68.8–79.9%)	87.4% (82.4–91.0%)	4,698	4,097	275	296
18	Larynx	86.0% (84.7–87.1%)	86.9% (85.5–88.1%)	81.3% (77.6–84.5%)	84.5% (78.7–88.9%)	4,264	3,360	618	248
19	Soft tissue including heart	84.9% (83.5–86.2%)	85.5% (83.9–86.9%)	81.4% (76.6–85.4%)	82.7% (78.0–86.4%)	3,285	2,511	356	373
20	Tonsil	92.7% (91.6–93.6%)	93.8% (92.7–94.7%)	82.7% (77.4–86.9%)	89.1% (82.2–93.4%)	3,319	2,860	288	154
Female									
	All malignant cancers	83.3% (83.1–83.4%)	83.5% (83.4–83.7%)	79.7% (79.3–80.1%)	83.9% (83.5–84.3%)	395,331	307,195	42,621	41,572
1	Breast	97.8% (97.7–97.9%)	98.1% (98.0–98.2%)	95.7% (95.3–96.1%)	98.2% (97.9–98.4%)	124,503	95,541	13,892	14,193
2	Lung and bronchus	51.9% (51.4–52.5%)	51.1% (50.5–51.7%)	52.2% (50.6–53.7%)	58.7% (57.0–60.4%)	41,772	33,182	4,766	3,705
3	Colon and rectum	83.5% (83.0–83.9%)	83.1% (82.5–83.6%)	82.5% (81.2–83.7%)	86.1% (84.9–87.3%)	32,815	24,431	4,209	3,855
4	Corpus and uterus	92.9% (92.5–93.2%)	94.0% (93.6–94.4%)	83.9% (82.4–85.2%)	93.1% (92.1–94.0%)	29,573	22,801	3,160	3,353
5	Thyroid	99.1%# (98.9#–99.2%#)	99.3%# (99.1#–99.4%#)	97.9%# (96.9#–98.6%#)	98.5%# (97.9#–99.0%#)	20,919	16,178	1,623	2,764
6	Melanoma of the skin	98.7% (98.4–99.0%)	98.8% (98.5–99.0%)	84.4%# (73.5%#–91.1%#)	93.5% (88.7–96.3%)	17,595	16,597	84	233
7	Lymphoma	86.0% (85.4–86.5%)	86.4% (85.8–87.0%)	85.8% (83.9–87.5%)	80.8% (78.7–82.8%)	17,620	14,033	1,693	1,664
8	Pancreas	34.0% (33.1%–34.9%)	33.9% (32.8–35.0%)	33.4% (30.8–35.9%)	34.9% (32.1–37.8%)	11,169	8,404	1,511	1,226
9	Leukaemia	77.5% (76.6–78.4%)	78.1% (77.1–79.1%)	75.7% (72.6–78.5%)	70.7% (67.2–74.0%)	9,712	7,852	914	788
9	Kidney and renal pelvis	86.9% (86.1–87.6%)	86.6% (85.7–87.4%)	87.9% (85.7–89.8%)	87.0% (84.4–89.2%)	9,596	7,374	1,245	861
11	Ovary	78.7% (77.9–79.4%)	78.6% (77.7–79.4%)	72.9% (70.0–75.6%)	84.0% (81.8–86.0%)	11,881	9,462	1,088	1,258
12	Urinary bladder	84.3% (83.4–85.2%)	85.3% (84.3–86.3%)	72.4% (68.4–76.1%)	82.4% (78.3–85.8%)	7,730	6,504	623	494
13	Cervix uteri	86.9% (86.0–87.8%)	88.2% (87.2–89.2%)	79.5% (76.5–82.2%)	86.2% (83.6–88.5%)	6,576	4,706	909	870
14	Myeloma	81.0% (79.8–82.1%)	80.1% (78.6–81.5%)	83.1% (80.7–85.3%)	81.0% (76.9–84.5%)	5,511	3,697	1,269	502
15	Stomach	58.9% (57.4–60.4%)	58.7% (56.7–60.6%)	61.0% (57.1–64.6%)	57.4% (54.1–60.6%)	4,699	2,892	756	1,006
15	Brain and other nervous system	62.1% (60.7–63.5%)	60.6% (59.1–62.1%)	69.8% (64.7–74.2%)	67.3% (62.2–71.9%)	5,252	4,399	398	398
17	Liver	51.8% (50.0–53.5%)	50.1% (47.9–52.4%)	48.5% (44.1–52.9%)	57.7% (54.1–61.1%)	3,542	2,117	559	842
18	Soft tissue including heart	84.7% (83.0–86.1%)	85.3% (83.4–87.0%)	84.6% (80.0–88.2%)	79.7% (74.2–84.1%)	2,522	1,839	358	294
19	Vulva	86.8% (85.1–88.4%)	86.3% (84.3–88.0%)	87.7% (80.6–92.4%)	91.3%# (82.9#–95.7%#)	2,088	1,791	163	113
20	Tongue	85.5% (83.6–87.3%)	85.7% (83.4–87.6%)	74.9% (64.5–82.6%)	88.8% (83.2–92.6%)	1,714	1,363	106	225
20	Small intestine	83.3% (81.4–85.0%)	84.0% (81.8–86.0%)	82.7% (77.9–86.6%)	75.8% (67.4–82.3%)	1,956	1,432	357	146

#, the relative cumulative survival increased from a prior interval and has been adjusted. Other denotes other races and ethnicities, including American Indian/AK Native, Asian/Pacific Islander. Rank is based on age-adjusted cancer incidence rate in 2016. CI, confidence interval.

Table S16 Three-year relative survival rates for 20 leading cancers [2016] by sex in the United States, 2010–2016

Incidence rank [2016]	Cancer	Three-year relative survival rates (95% CI)				NO.			
		All races	White	Black	Other	All races	White	Black	Other
Male									
	All malignant cancers	71.7% (71.6–71.9%)	72.5% (72.3–72.7%)	69.2% (68.7–69.7%)	63.5% (62.9–64.1%)	404,243	318,681	44,713	34,724
1	Prostate	98.6% (98.4–98.8%)	98.9% (98.6–99.1%)	97.3%# (96.6#–97.8%#)	95.9% (95.1–96.7%)	116,247	87,951	17,745	7,776
2	Lung and bronchus	23.1% (22.6–23.6%)	23.0% (22.4–23.5%)	21.7% (20.3–23.0%)	24.9% (23.4–26.4%)	44,679	34,733	5,207	4,587
3	Colon and rectum	72.3% (71.7–72.9%)	72.9% (72.2–73.6%)	65.4% (63.5–67.3%)	73.0% (71.3–74.5%)	35,887	26,882	4,064	4,581
4	Urinary bladder	83.4% (82.7–84.1%)	84.0% (83.2–84.7%)	73.6% (70.0–76.8%)	79.1% (76.0–81.9%)	24,674	21,781	1,200	1,401
5	Melanoma of the skin	94.4% (93.8–94.9%)	94.3% (93.7–94.8%)	68.2%# (50.3#–80.8%#)	76.3% (68.6–82.3%)	21,934	20,853	61	243
6	Lymphoma	78.7% (78.0–79.4%)	79.5% (78.7–80.2%)	74.2% (71.9–76.4%)	73.6% (71.3–75.8%)	22,197	17,799	2,055	2,023
7	Kidney and renal pelvis	79.4% (78.6–80.2%)	79.5% (78.6–80.4%)	79.5%# (77.1#–81.6%#)	75.8% (73.0–78.4%)	16,941	13,350	1,973	1,447
8	Leukaemia	71.5% (70.6–72.5%)	72.5% (71.4–73.5%)	67.0% (63.3–70.4%)	60.1% (56.7–63.4%)	13,558	11,211	1,030	1,064
9	Pancreas	14.2% (13.5–15.0%)	14.3% (13.4–15.2%)	13.1% (10.9–15.5%)	14.0% (11.6–16.5%)	11,392	8,915	1,287	1,145
10	Liver	29.3% (28.3–30.3%)	28.8% (27.5–30.0%)	25.0% (22.5–27.6%)	34.0% (31.6–36.3%)	11,439	7,423	1,785	2,163
11	Myeloma	66.6% (65.1–68.0%)	66.4% (64.6–68.1%)	66.7% (63.0–70.0%)	65.6% (60.5–70.2%)	6,800	4,947	1,209	581
12	Stomach	35.8% (34.4–37.1%)	34.9% (33.4–36.5%)	33.0% (29.4–36.7%)	39.6% (36.4–42.8%)	7,345	5,057	938	1,302
13	Thyroid	96.8%# (96.0#–97.4%#)	97.0%# (96.1#–97.7%#)	94.7%# (90.1#–97.2%#)	94.8%# (92.3#–96.6%#)	6,475	5,315	320	736
14	Brain and other nervous system	37.6% (36.3–39.0%)	36.3% (34.8–37.7%)	45.2% (39.9–50.4%)	41.2% (36.1–46.1%)	6,817	5,766	453	531
14	Oesophagus	26.8% (25.4–28.2%)	28.3% (26.8–29.8%)	14.4% (10.7–18.7%)	19.4% (14.8–24.4%)	6,119	5,221	446	426
16	Testis	97.2% (96.6–97.7%)	97.4% (96.8–97.9%)	92.0%# (86.0#–95.6%#)	96.0%# (93.4#–97.6%#)	5,838	5,079	190	450
17	Tongue	74.0% (72.4–75.6%)	75.3% (73.5–76.9%)	59.3% (52.2–65.7%)	69.3% (61.9–75.5%)	4,698	4,097	275	296
18	Larynx	71.0% (69.2–72.7%)	72.5% (70.5–74.3%)	62.2% (57.1–66.8%)	70.0% (62.3–76.4%)	4,264	3,360	618	248
19	Soft tissue including heart	71.7% (69.7–73.6%)	72.9% (70.6–75.0%)	66.3% (59.9–71.9%)	65.6%# (59.3#–71.2%#)	3,285	2,511	356	373
20	Tonsil	83.3% (81.6–84.8%)	85.0% (83.2–86.6%)	66.6%# (59.5#–72.8%#)	79.6%# (70.6#–86.1%#)	3,319	2,860	288	154
Female									
	All malignant cancers	74.2% (74.1–74.4%)	75.0% (74.8–75.2%)	67.3% (66.7–67.8%)	73.9% (73.4–74.4%)	395,331	307,195	42,621	41,572
1	Breast	94.2% (94.0–94.4%)	95.0% (94.7–95.2%)	88.5% (87.7–89.2%)	94.4% (93.9–94.9%)	124,503	95,541	13,892	14,193
2	Lung and bronchus	31.2% (30.7–31.8%)	30.9% (30.3–31.5%)	29.6% (28.1–31.2%)	35.2% (33.4–37.1%)	41,772	33,182	4,766	3,705
3	Colon and rectum	72.0% (71.3–72.6%)	72.3% (71.5–73.0%)	67.6% (65.8–69.4%)	73.2% (71.4–74.9%)	32,815	24,431	4,209	3,855
4	Corpus and uterus	85.8% (85.2–86.3%)	87.9% (87.3–88.4%)	69.2% (67.2–71.2%)	86.1% (84.6–87.4%)	29,573	22,801	3,160	3,353
5	Thyroid	99.0%# (98.8#–99.2%#)	99.2%# (99.0#–99.4%#)	97.6%# (96.2#–98.5%#)	98.0% (97.2–98.6%)	20,919	16,178	1,623	2,764
6	Melanoma of the skin	97.2% (96.7–97.7%)	97.2% (96.7–97.7%)	80.9% (66.3–89.7%)	86.6%# (79.3#–91.4%#)	17,595	16,597	84	233
7	Lymphoma	80.7% (80.0–81.5%)	81.4% (80.5–82.2%)	80.5% (78.1–82.7%)	73.2% (70.6–75.6%)	17,620	14,033	1,693	1,664
8	Pancreas	13.6% (12.8–14.4%)	13.2% (12.3–14.1%)	14.6% (12.5–16.8%)	14.9% (12.6–17.4%)	11,169	8,404	1,511	1,226
9	Leukaemia	68.0% (66.9–69.1%)	69.1% (67.9–70.4%)	63.0% (59.1–66.6%)	56.6%# (52.4#–60.5%#)	9,712	7,852	914	788
9	Kidney and renal pelvis	80.5% (79.5–81.5%)	80.1% (78.9–81.3%)	82.8% (79.9–85.3%)	78.2%# (74.7#–81.4%#)	9,596	7,374	1,245	861
11	Ovary	60.4% (59.3–61.5%)	59.9% (58.7–61.1%)	55.2% (51.6–58.7%)	67.4% (64.2–70.3%)	11,881	9,462	1,088	1,258
12	Urinary bladder	77.4% (76.1–78.6%)	78.9% (77.6–80.3%)	60.4% (55.4–65.0%)	72.6%# (67.4#–77.2%#)	7,730	6,504	623	494
13	Cervix uteri	74.3% (73.0–75.5%)	75.9% (74.4–77.4%)	63.7% (59.8–67.3%)	74.1%# (70.5#–77.3%#)	6,576	4,706	909	870
14	Myeloma	66.7% (65.1–68.3%)	66.3% (64.3–68.2%)	67.9% (64.5–71.1%)	64.0% (58.5–69.0%)	5,511	3,697	1,269	502
15	Stomach	39.2% (37.5–40.9%)	39.0% (36.9–41.1%)	44.0% (39.7–48.3%)	35.4% (31.8–38.9%)	4,699	2,892	756	1,006
15	Brain and other nervous system	40.5% (39.0–42.1%)	38.9% (37.3–40.6%)	46.2% (40.3–51.8%)	47.7%# (42.0#–53.2%#)	5,252	4,399	398	398
17	Liver	31.1% (29.3–33.0%)	29.9% (27.5–32.2%)	26.9% (22.5–31.4%)	37.0% (33.0–40.9%)	3,542	2,117	559	842
18	Soft tissue including heart	74.1% (71.9–76.1%)	74.2% (71.6–76.6%)	75.7%# (69.9#–80.5%#)	69.2%# (62.4#–75.0%#)	2,522	1,839	358	294
19	Vulva	76.9% (74.4–79.2%)	76.5%# (73.8#–79.0%#)	77.2% (67.6–84.3%)	76.9%# (65.4#–85.1%#)	2,088	1,791	163	113
20	Tongue	72.2% (69.4–74.8%)	72.7% (69.6–75.6%)	54.4%# (42.2#–65.0%#)	75.3%# (66.8#–81.9%#)	1,714	1,363	106	225
20	Small intestine	74.4% (71.9–76.7%)	75.9% (73.0–78.6%)	73.6%# (67.4#–78.8%#)	59.3% (48.9–68.2%)	1,956	1,432	357	146

#, the relative cumulative survival increased from a prior interval and has been adjusted. Other denotes other races and ethnicities, including American Indian/AK Native, Asian/Pacific Islander. Rank is based on age-adjusted cancer incidence rate in 2016. CI, confidence interval.

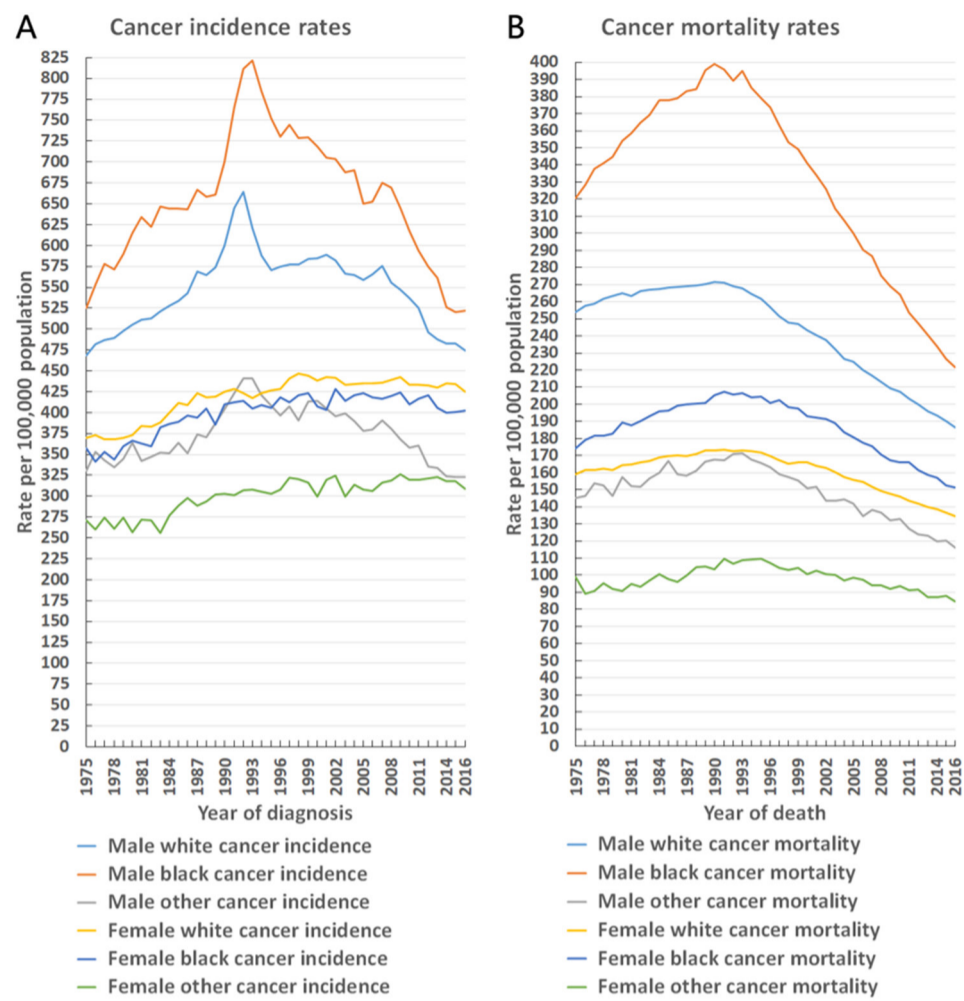


Figure S1 Trends in overall cancer incidence and mortality rates [1975–2016] by race and ethnicity, United States. Rates are age-adjusted to the 2000 United States standard population. Other denotes other races and ethnicities, including American Indian/AK Native, Asian/Pacific Islander. (A) Overall cancer incidence rates; (B) overall cancer mortality rates.

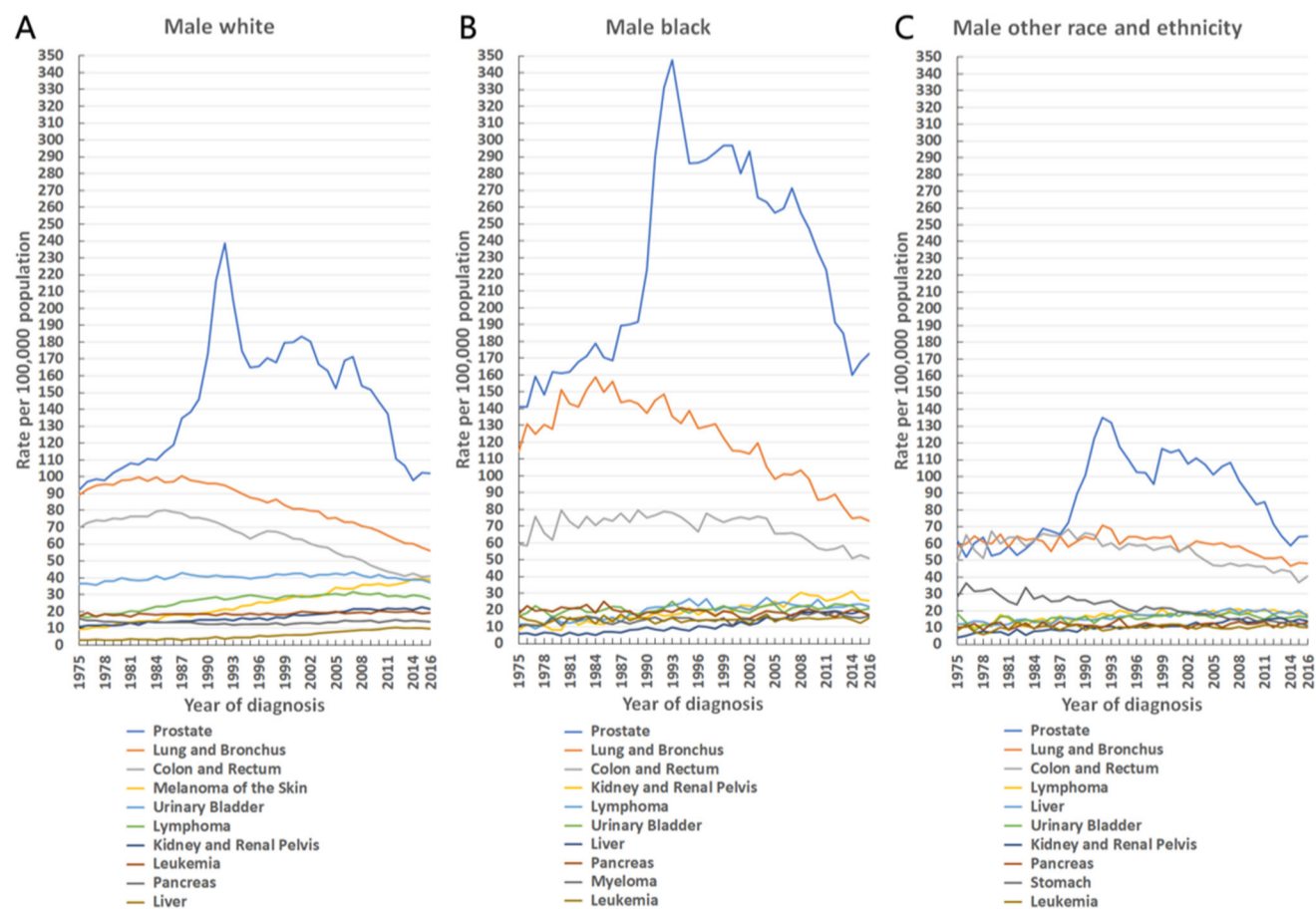


Figure S2 Trends in the incidence rate of the 10 leading cancers in males by race and ethnicity, United States, 1975–2016. Rates are age-adjusted to the 2000 United States standard population. (A) Male white; (B) male black; (C) male other races and ethnicities.

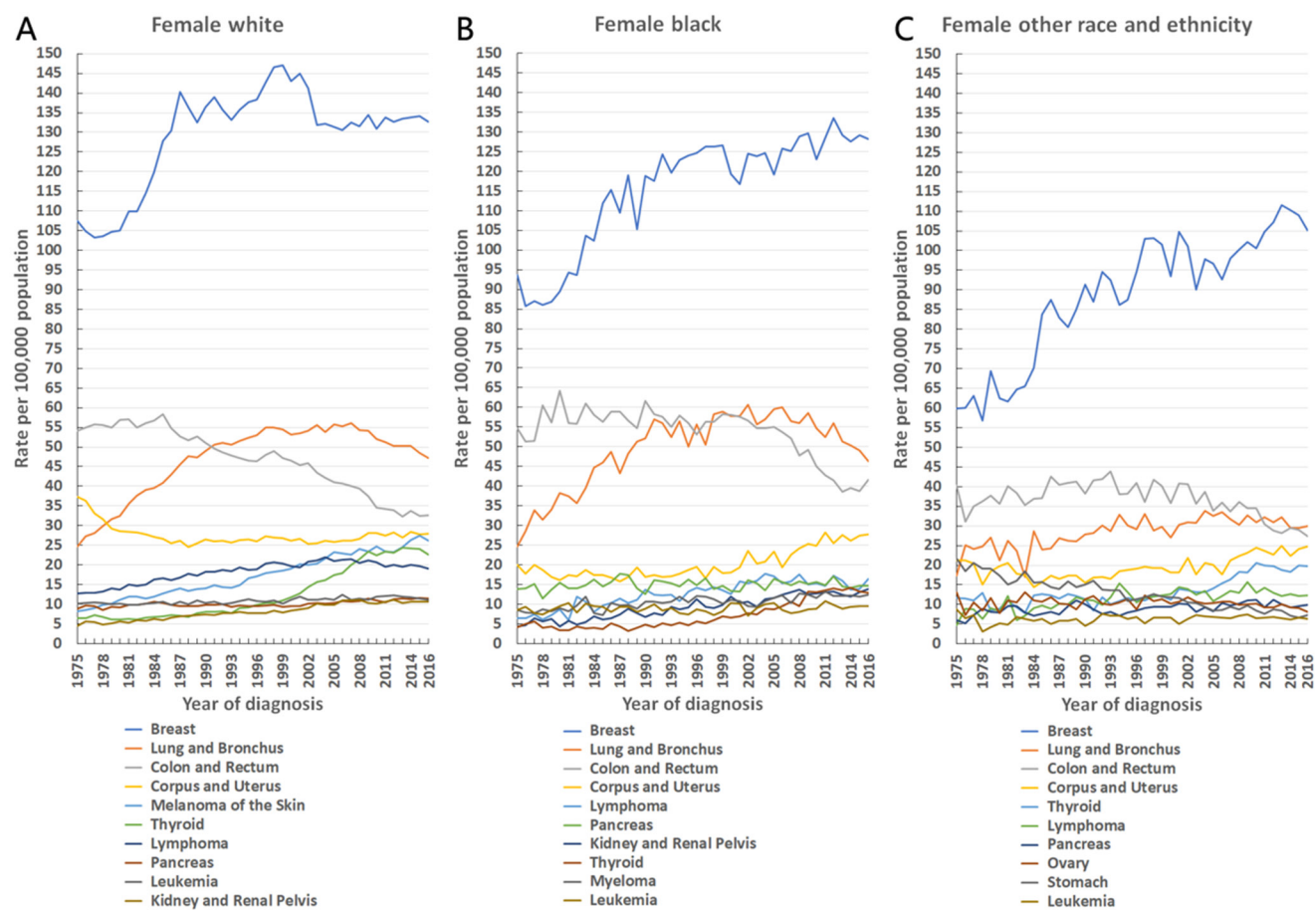


Figure S3 Trends in the incidence rate of the 10 leading cancers in females by race and ethnicity, United States, 1975–2016. Rates are age-adjusted to the 2000 United States standard population. (A) Female white; (B) female black; (C) female other races and ethnicities.

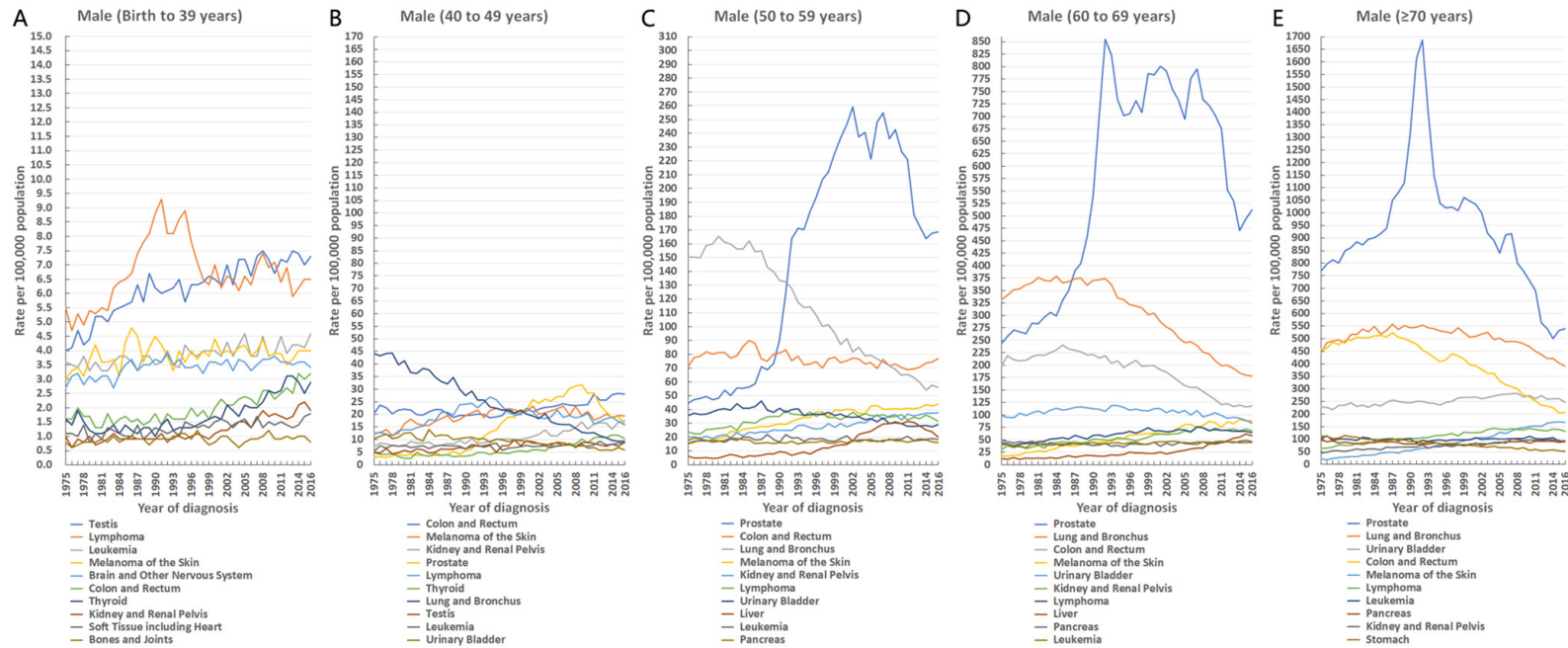


Figure S4 Trends in the incidence rate of the 10 leading cancers in males by age groups, United States, 1975–2016. Rates are age-adjusted to the 2000 United States standard population. (A) Birth–39 years; (B) 40–49 years; (C) 50–59 years; (D) 60–69 years; (E) ≥ 70 years.

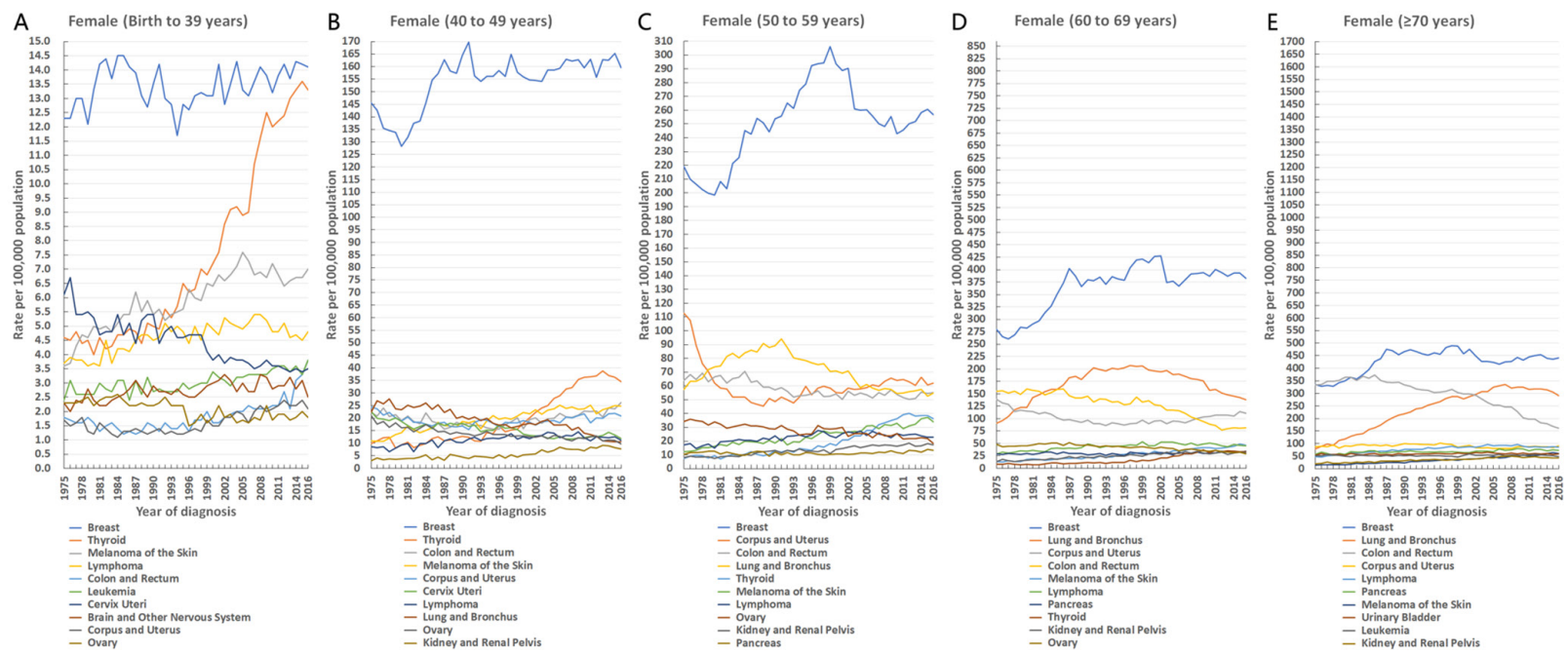


Figure S5 Trends in the incidence rate of the 10 leading cancers in females by age intervals, United States, 1975–2016. Rates are age-adjusted to the 2000 United States standard population. (A) Birth–39 years; (B) 40–49 years; (C) 50–59 years; (D) 60–69 years; (E) ≥70 years.

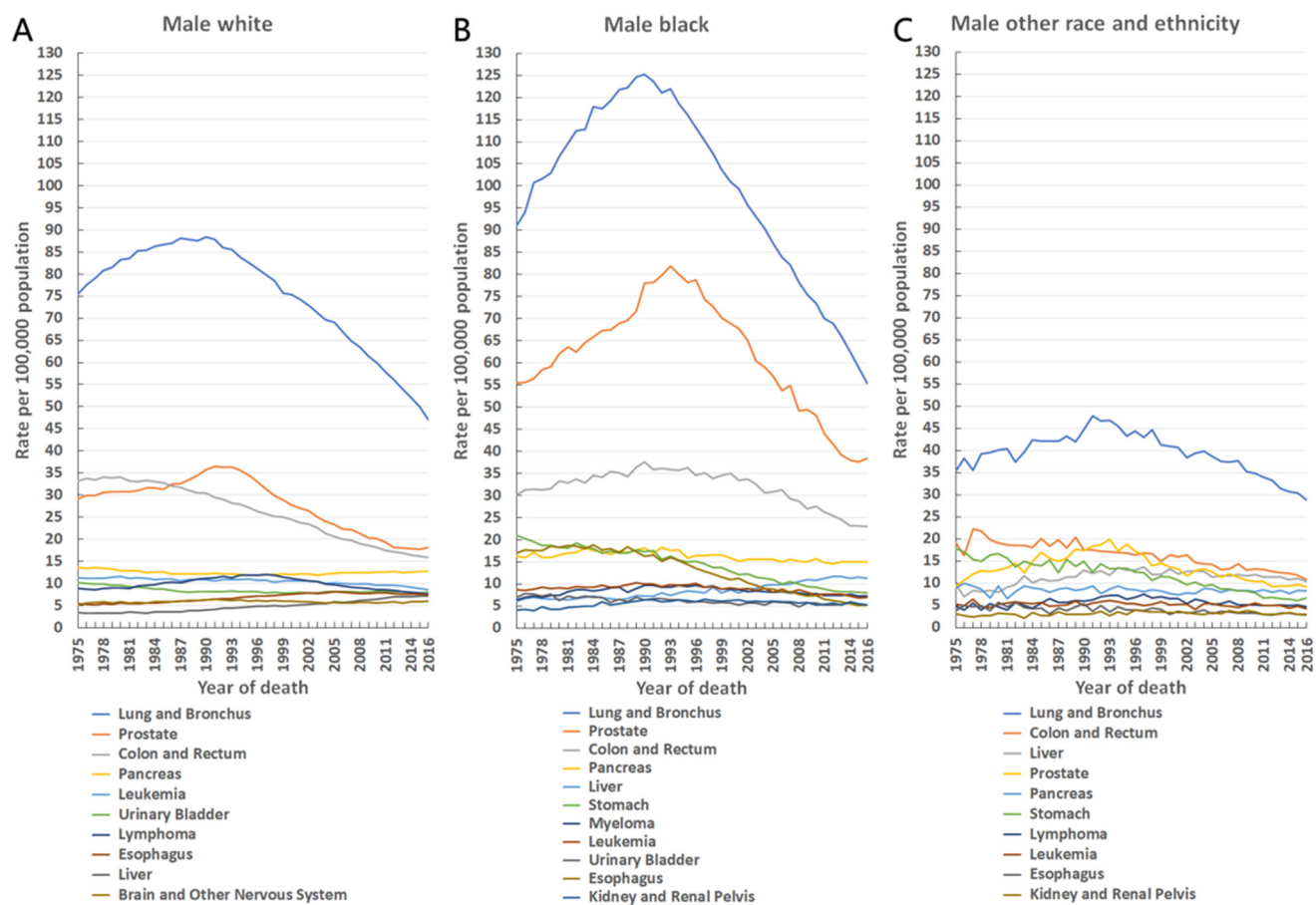


Figure S6 Trends in the mortality rate of the 10 leading causes of cancer death in males by race and ethnicity, United States, 1975–2016. Rates are age-adjusted to the 2000 United States standard population. (A) Male white; (B) male black; (C) male other races and ethnicities.

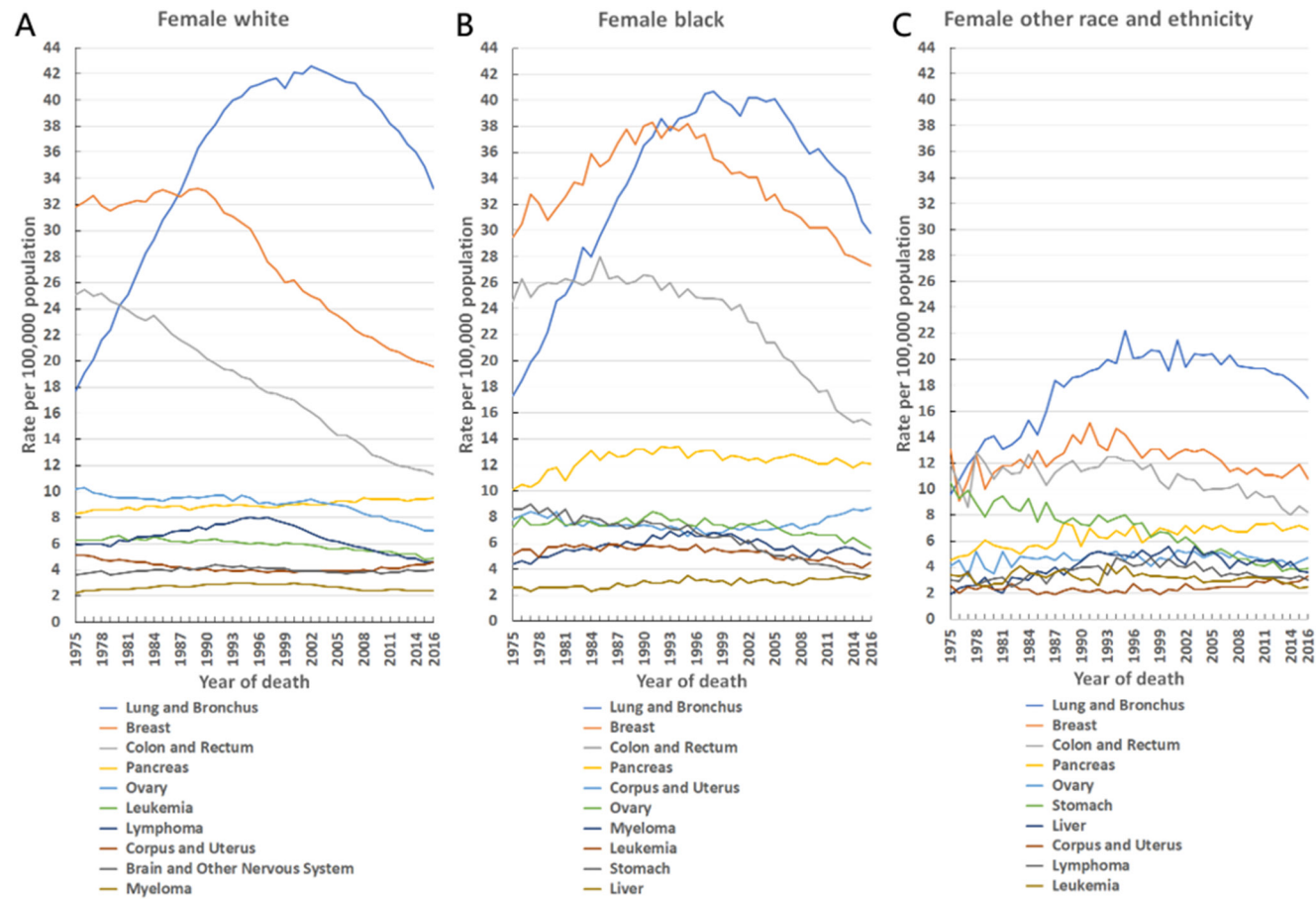


Figure S7 Trends in the mortality rate of the 10 leading causes of cancer death in females by race and ethnicity, United States, 1975–2016. Rates are age-adjusted to the 2000 United States standard population. (A) Female white; (B) female black; (C) female other races and ethnicities.

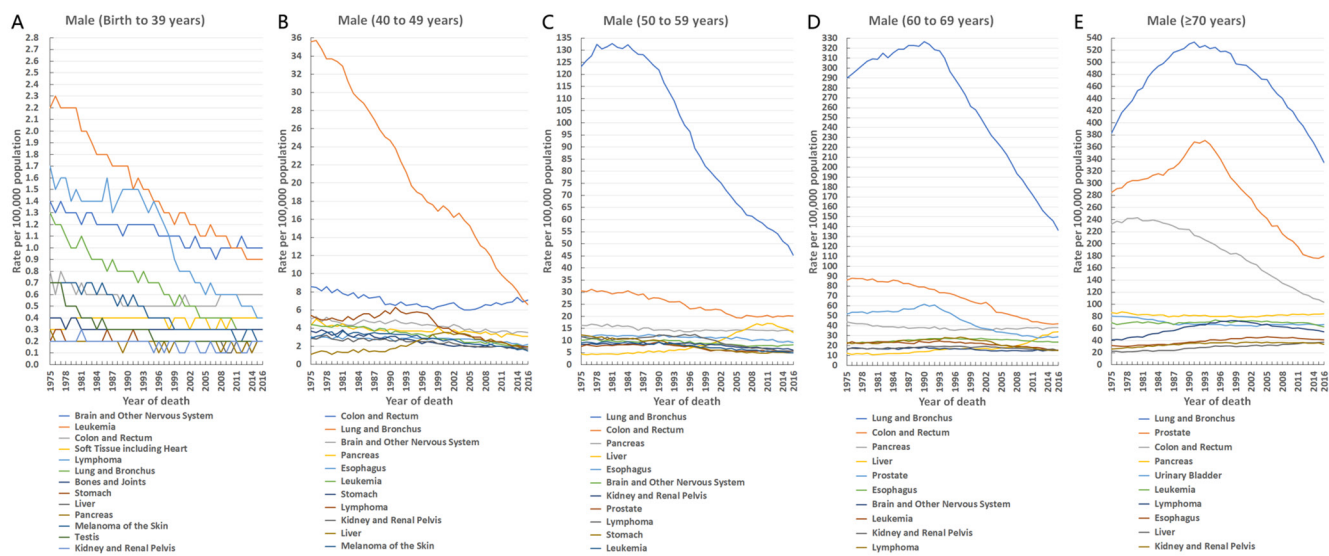


Figure S8 Trends in the mortality rate of the 10 leading causes of cancer death in males by age groups, United States, 1975–2016. Rates are age-adjusted to the 2000 United States standard population. (A) Birth–39 years; (B) 40–49 years; (C) 50–59 years; (D) 60–69 years; (E) ≥ 70 years.

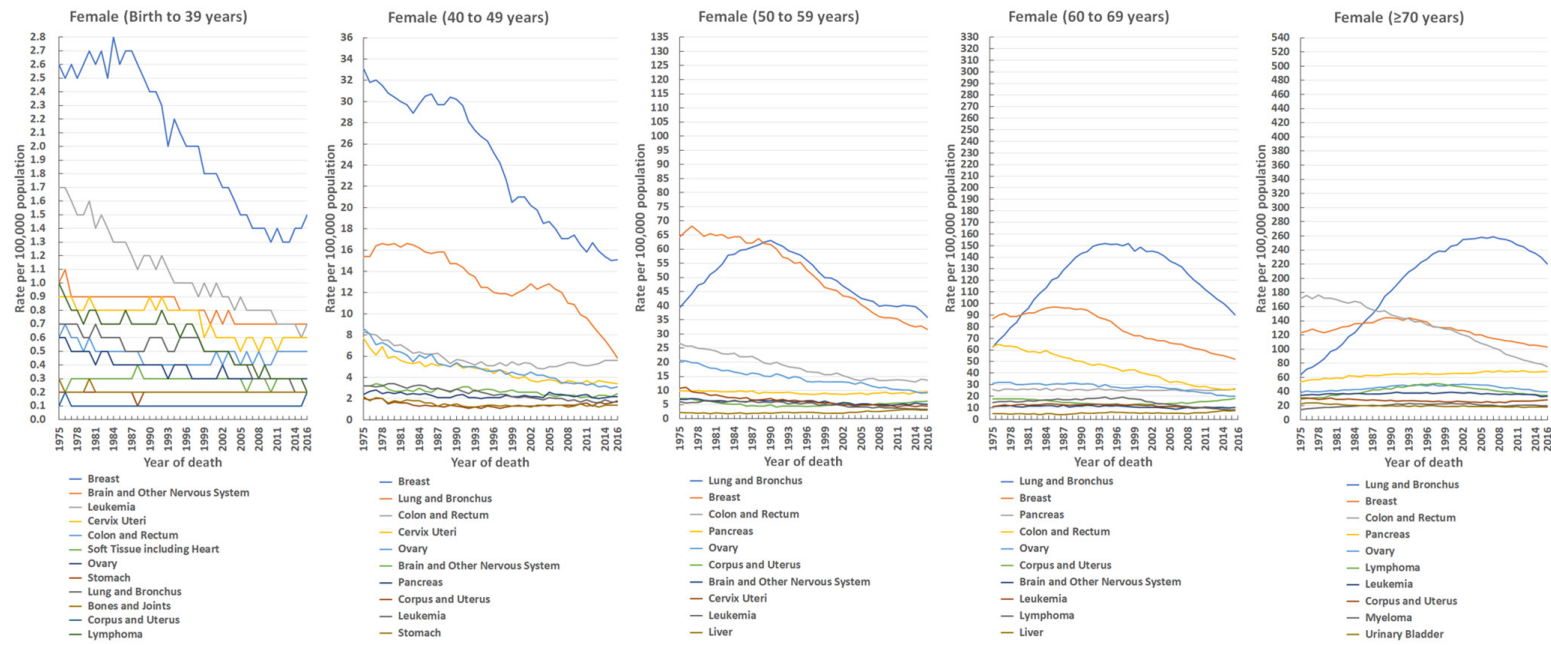


Figure S9 Trends in the mortality rate of the 10 leading causes of cancer death in females by age groups, United States, 1975–2016. Rates are age-adjusted to the 2000 United States standard population. (A) Birth–39 years; (B) 40–49 years; (C) 50–59 years; (D) 60–69 years; (E) ≥70 years.