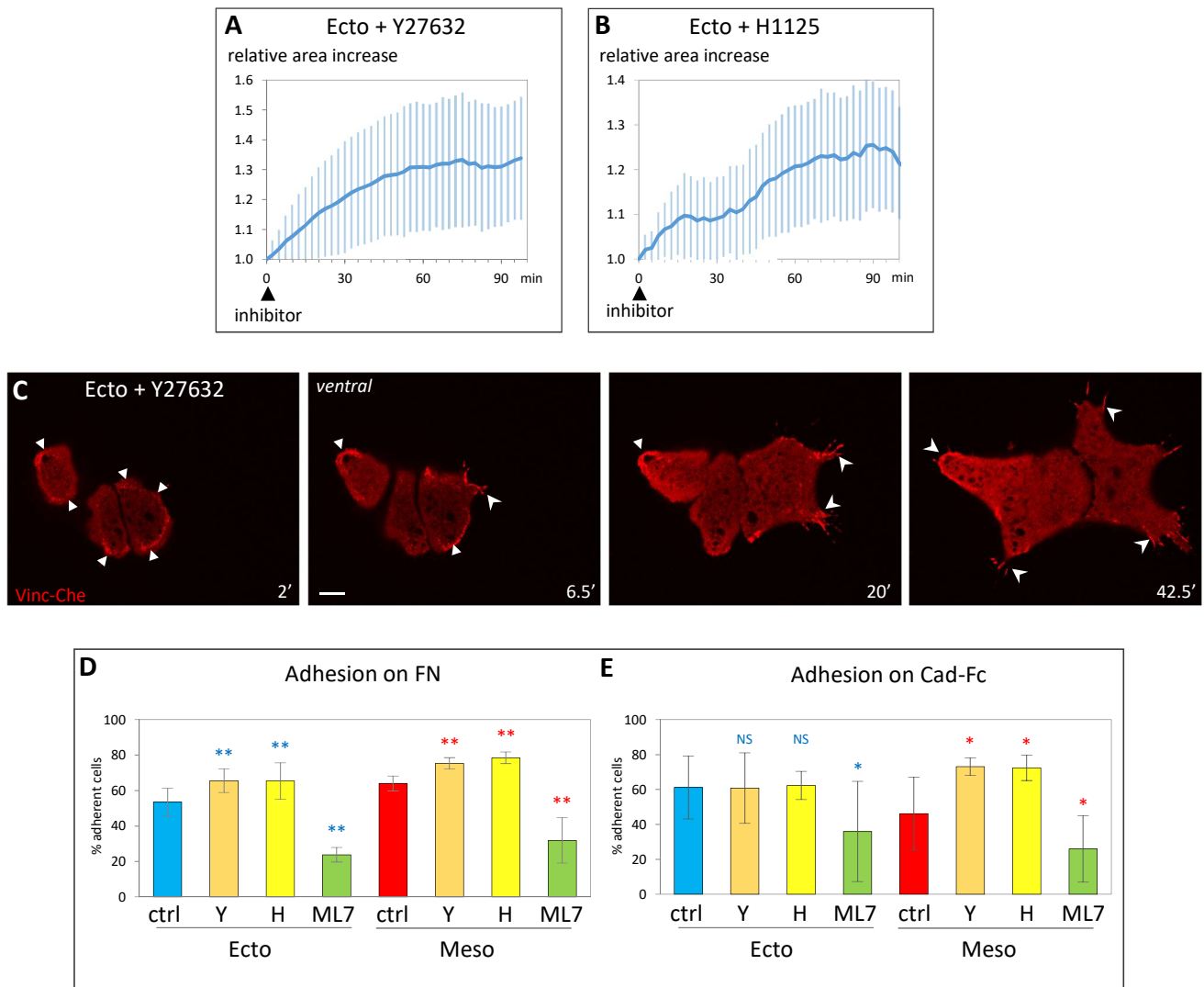


### S3 Fig



Related to Figure 2: **A,B) Area expansion** for single cells after treatment with Rock inhibitors Y27632 (50 $\mu$ M) and H1125 (1 $\mu$ M). Average and SD of 107 cells (A) and 34 cells (B). **C) Changes in vinculin distribution.** Images from a time lapse movie of a small group of three cells expressing Vinculin-Cherry, treated at time = 0 with Y27632. Filled arrowheads: ring-like adhesion; Concave arrowheads: FAs. Scale bars: 10 $\mu$ m. **D,E) Opposite effects of Rock and MLCK inhibition on cell adhesion.** Ectoderm and mesoderm adhesion to FN or cadherin was measured after treatment with Rock inhibitors Y27632 (Y, 50 $\mu$ M), H1125 (H, 1 $\mu$ M), or the MLCK inhibitor ML7. 5 experiments, total 1000-2000 cells/conditions. Statistical comparison to control ectoderm or mesoderm, comparing the % adherent cells/experiment, pairwise two-sided Student's *t*-test.