

Compound 5a

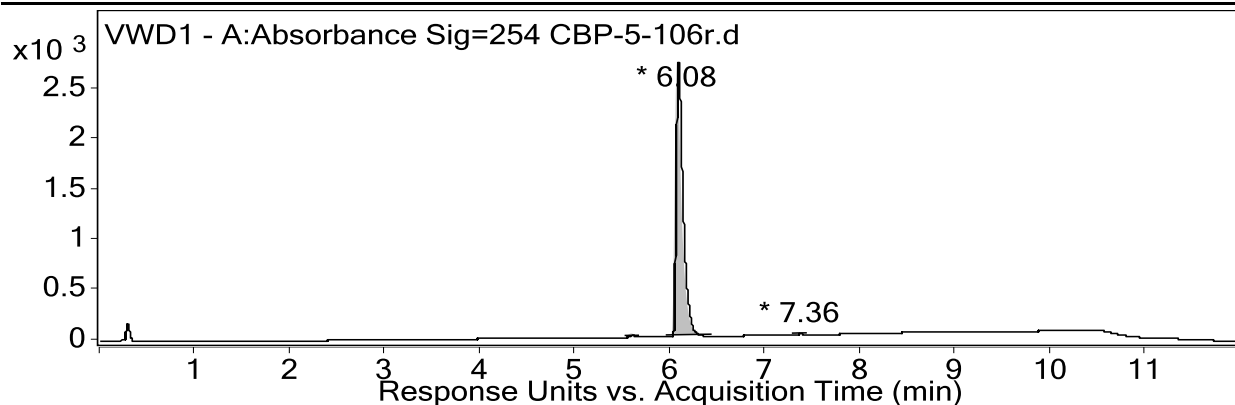
Qualitative Analysis Report

Data Filename CBP-5-106r.d **Sample Name** CBP-5-106 final
Sample Type Sample **Position** Vial 43
Instrument Name Instrument 1 **User Name**
Acq Method ESI+20-100%_12min.m **Acquired Time** 2/18/2016 2:38:01 PM

IRM Calibration Status Not Applicable **DA Method** 102315.m

Comment

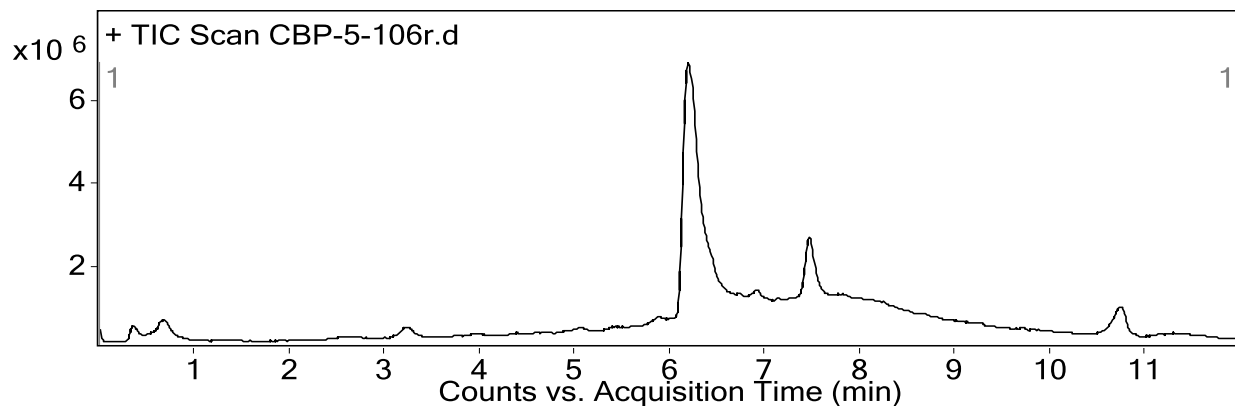
User Chromatograms



Integration Peak List

Peak	Start	RT	End	Height	Area	Area %
1	5.53	5.6	5.68	18.98	66.92	0.49
2	5.96	6.08	6.45	2718.45	13654.53	100
3	7.29	7.36	7.45	10.28	33.68	0.25

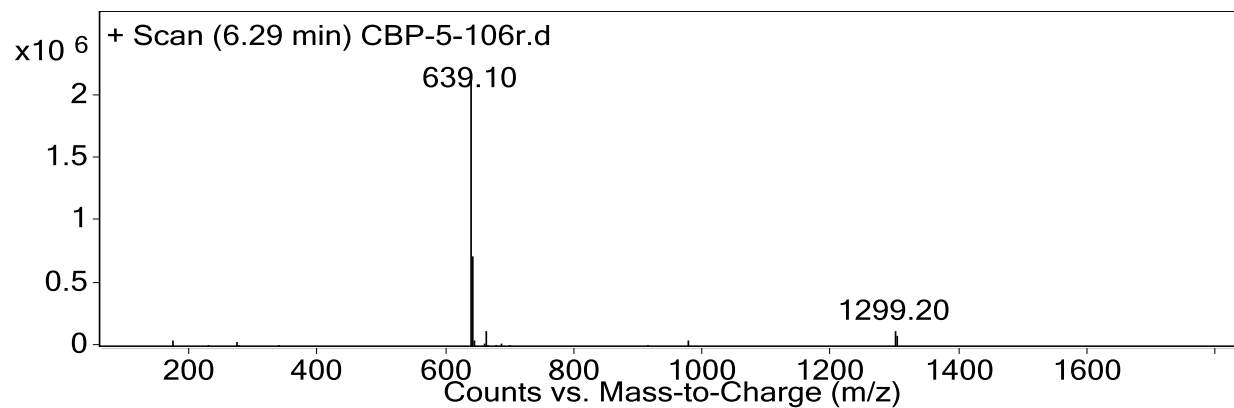
Fragmentor Voltage 165 **Collision Energy** 0 **Ionization Mode** ESI



User Spectra

Fragmentor Voltage 165 **Collision Energy** 0 **Ionization Mode** Esi

Qualitative Analysis Report



Peak List

<i>m/z</i>	<i>z</i>	Abund
639.1	1	2148623
640.2	1	713149
641.1	1	236849
661.1		118830
1299.2		129054

--- End Of Report ---