

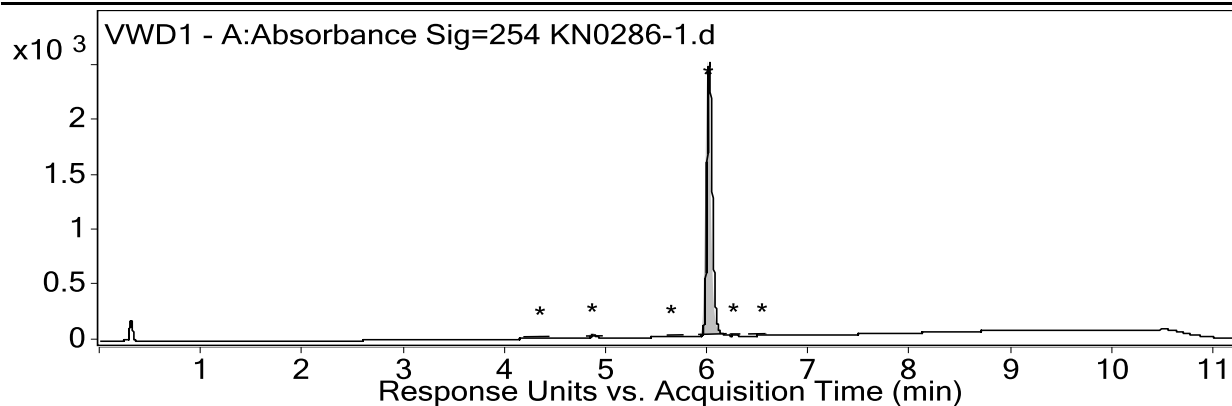
# Compound 7f

## Qualitative Analysis Report

**Data Filename** KN0286-1.d      **Sample Name** KN0286-1  
**Sample Type** Sample      **Position** Vial 41  
**Instrument Name** Instrument 1      **User Name**  
**Acq Method** ESI+20-100%\_12min.m      **Acquired Time** 5/16/2017 2:32:17 PM  
**IRM Calibration Status** Not Applicable      **DA Method** ChromPeakSurvey-Default.m

### Comment

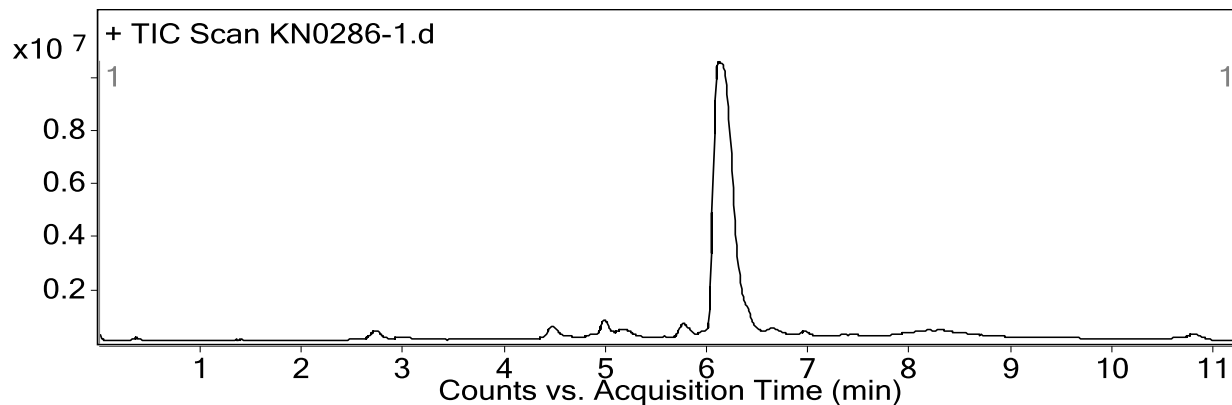
### User Chromatograms



### Integration Peak List

Peak	Start	RT	End	Height	Area	Area %
1	4.19	4.35	4.45	6.47	32.87	0.36
2	4.81	4.87	4.97	27.8	99.57	1.08
3	5.61	5.65	5.77	2.7	11.34	0.12
4	5.92	6.01	6.2	2488.03	9229.93	100
5	6.23	6.27	6.33	4.38	14.57	0.16
6	6.41	6.55	6.59	1.1	5.94	0.06

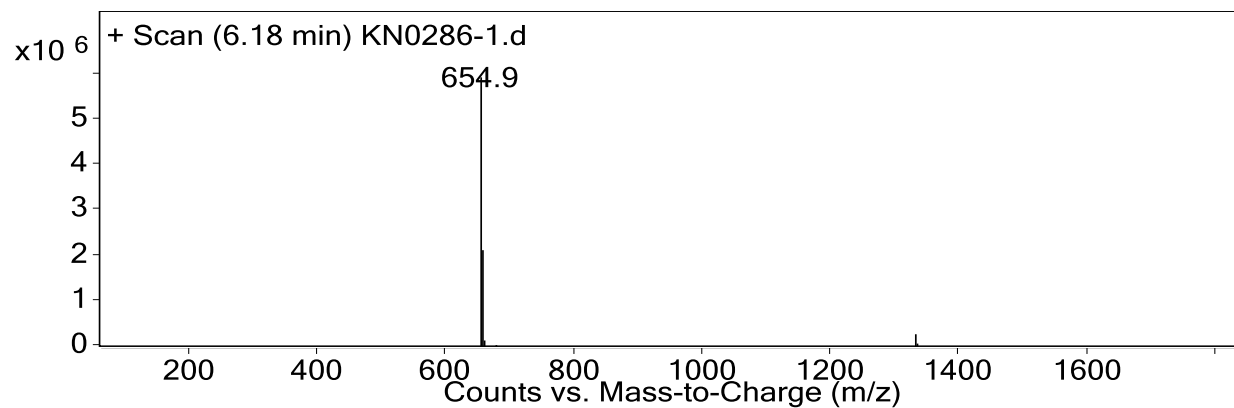
**Fragmentor Voltage** 165      **Collision Energy** 0      **Ionization Mode** ESI



### User Spectra

**Fragmentor Voltage** 165      **Collision Energy** 0      **Ionization Mode** ESI

# Qualitative Analysis Report



## Peak List

<i>m/z</i>	<i>z</i>	Abund
654.9	1	5934357
655.9	1	2107982
656.9	1	658473

--- End Of Report ---