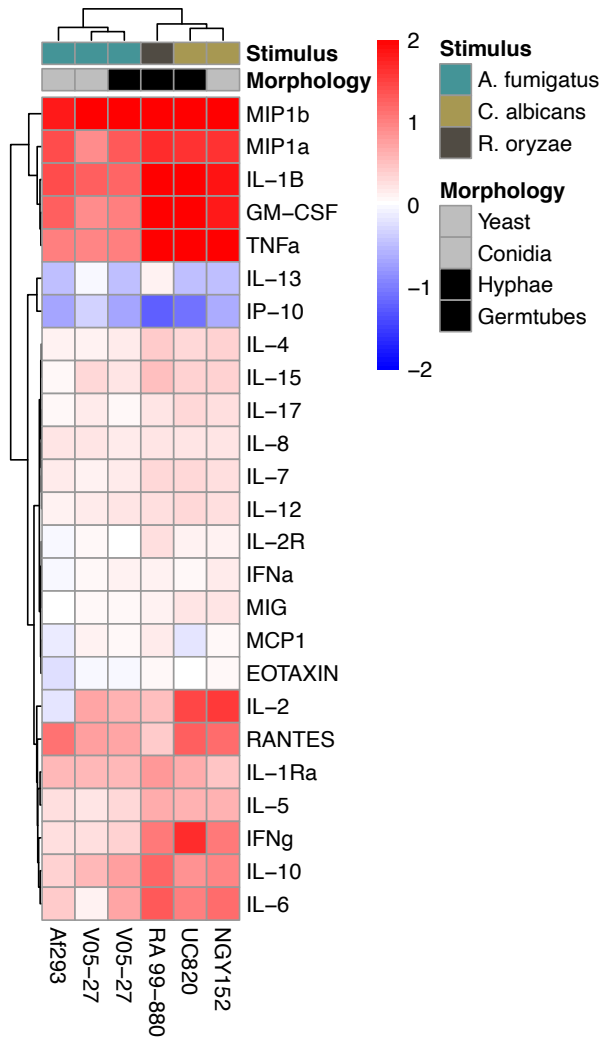
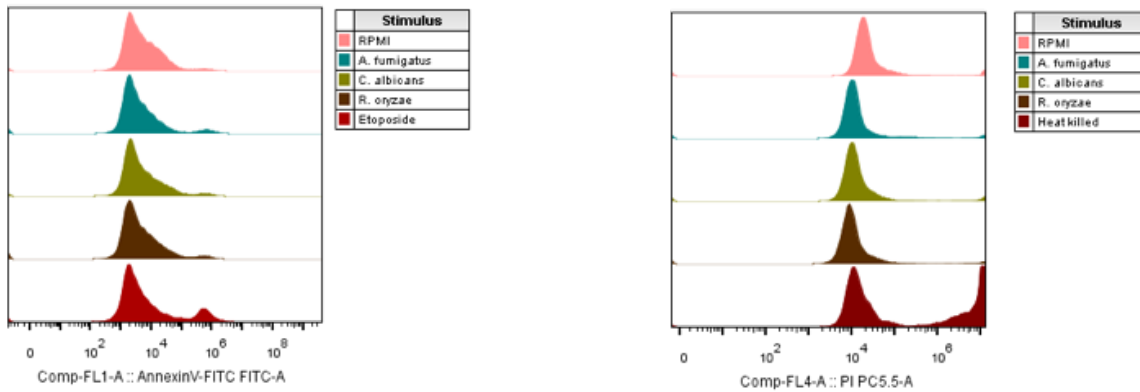


Supplementary Figure 1

A



B



Supplementary Figure 1 (Figure S1). Functional validation of the fungal core host response and PBMCs viability upon 24 hour stimulation with *A. fumigatus*, *C. albicans* and *R. oryzae*; Related to Figure 4. (A) Heatmaps of cytokine production of PBMCs (n=9) stimulated with additional morphotypes and/or strains of *A. fumigatus*, *C. albicans* and *R. oryzae* compared to the unstimulated cells (RPMI). Means of the log₁₀ fold-changes were calculated, and the data were clustered using hierarchical clustering on both axes (Euclidean distance, average linkage). Shade of red indicate upregulation, while shade of blue downregulation (see legend). (B) Viability of PBMCs (n=4) assessed by Annexin-V and PI staining after 24 hours stimulation with RPMI, *A. fumigatus*, *C. albicans* and *R. oryzae*, as well as positive controls for apoptosis (Etoposide, 50uM) and necrosis (heat-killing of cells for 1 minute at 65°C). The percentage of apoptotic cells gated on the singlet, CD45⁺ cells are visualized by Annexin-V staining (left histogram), while the percentage of necrotic cells gated on the singlet, CD45⁺ cells are visualized by PI staining (right histogram).