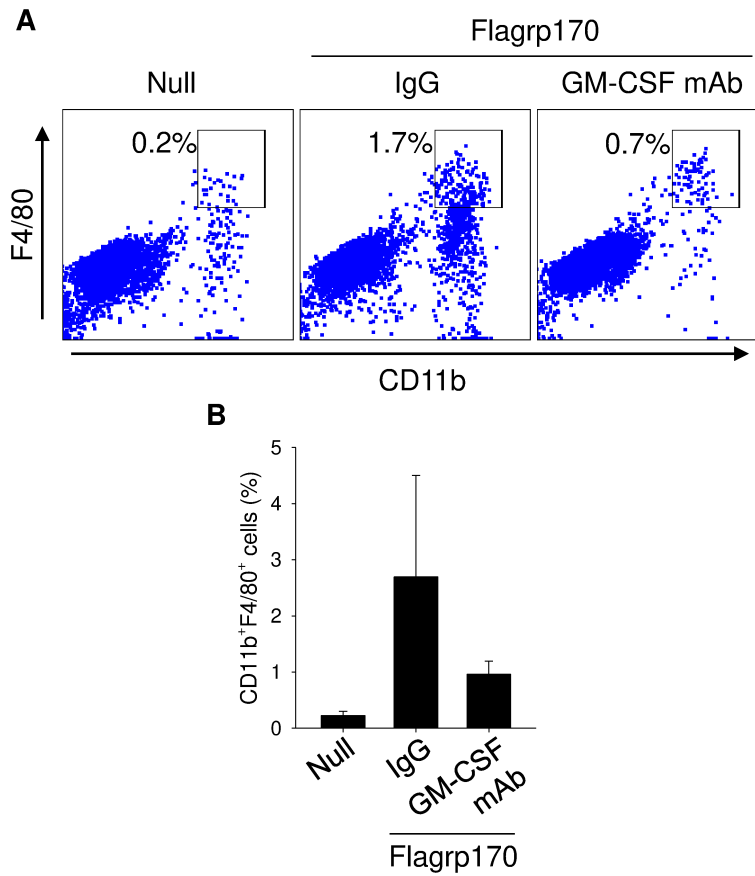


Supplementary Figure S6



Supplementary Figure S6. Neutralization of GM-CSF decreases Flagrp170-induced infiltration of macrophages. B16 tumor-bearing mice (n=3) were injected with GM-CSF neutralizing antibodies during *in situ* Flagrp170 treatment. Tumor infiltration by macrophages was determined by flow cytometry. Data shown are representative of three independent experiments.