

OMTN, Volume 23

## **Supplemental Information**

### **Long non-coding RNAs MACC1-AS1 and FOXD2-AS1 mediate NSD2-induced cisplatin resistance in esophageal squamous cell carcinoma**

**Wenhua Xue, Zhibo Shen, Lifeng Li, Yuanyuan Zheng, Dan Yan, Quancheng Kan, and Jie Zhao**

**Supplementary Table S1. PCR primers used in this study.**

---

<b>Gene</b>	<b>Primer sequence (5'-3')</b>
<b>Primers for quantitative PCR assay</b>	
NSD1	Forward: CCAGGGACAAGGCAAAAGTTG Reverse: CAGTAACAGGGTAAAGCAGACA
NSD2	Forward: CCATCCTAGTGAGAAGCTGG Reverse: CCCCAAATGTTGATAAGAACC
NSD3	Forward: GTTGAAGGAAGAAGTGAACAT Reverse: GGCTGCTTCAGCCTTCCAGGA
MACC1-AS1	Forward: GAACCCTGCACTTGAACAACA Reverse: GACTGGCCGCTGGAGAGTTC
FOXD2-AS1	Forward: GCGAAGAGTACGTTGCTATCA Reverse: GCGTGCAATCGTTCCGCTGTG
DANCR	Forward: CTCCAGGAGTTCGTCTCTTAC Reverse: AGGATAGTTGGCTTAAGTCA
TGFA	Forward: CCTGGCTGTCCTTATCATCAC Reverse: GGCACCACTCACAGTGTTTTTC
PAK1	Forward: GGTTTCAAGTGTTTAGTAACTTTTC Reverse: TTAGCTGCAGCAATCAGTGG
MET	Forward: GAGGAAGACCTTCAGAAGGT Reverse: CAACTAGAGCCATGTTGATG

---

---

GAPDH                      Forward: ACCACAGTCCATGCCATCAC  
Reverse: TCCACCACCCTGTTGCTGTA

**Primers for ChIP assay**

*MACC1-ASI*                      Forward: GTGTTTGCATGAGCATGCCAAC  
promoter

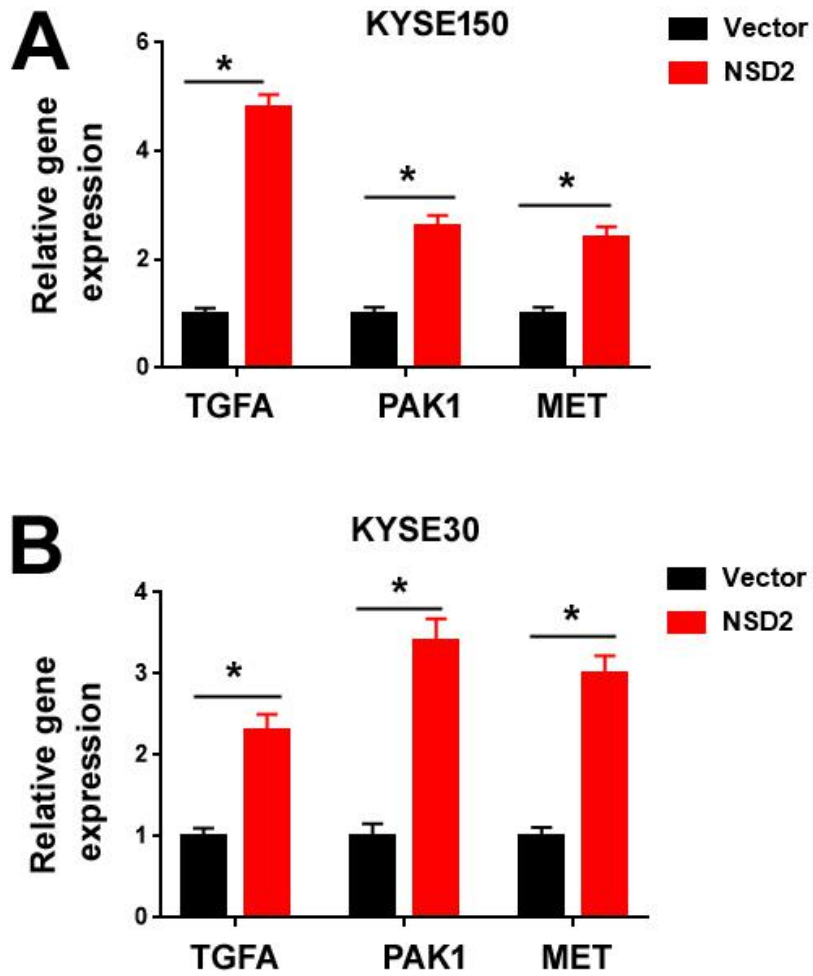
Reverse: GTGAGACTTGCTACTCTTTTTCA

*FOXD2-ASI*                      Forward: GGAGTACAGAATCCCCAGCTTC  
promoter

Reverse: CCTCTATACAGAGAGGAGCTC

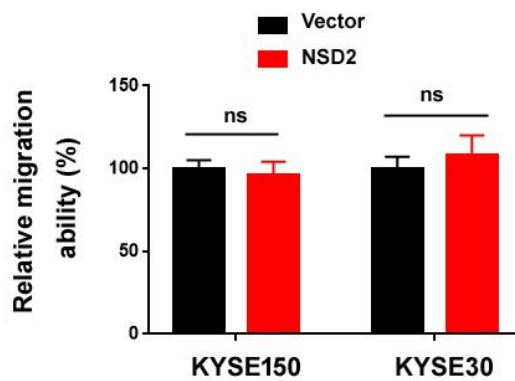
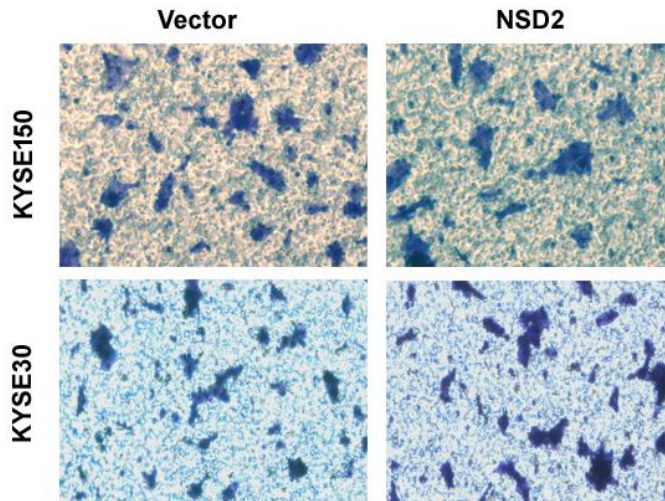
*DANCR* promoter                      Forward: GGCTTCTCTTTAAGCTTACGGT  
Reverse: GCGCGGAGCATCCTTCTCTGA

---



Supplementary Figure S1. Effect of NSD2 overexpression on target gene expression.

Analysis of TGFA, PAK1, and MET in (A) KYSE150 and (B) KYSE30 cells transfected with empty vector or NSD2-expressing plasmid. \* $P < 0.05$ .



Supplementary Figure S2. Effect of NSD2 overexpression on ESCC cell migration. KYSE150 and KYSE30 cells transfected with empty vector or NSD2-expressing plasmid were plated on the upper compartment of the Transwell chamber. The lower compartment was filled with serum-containing medium. After culturing for 24 h, the cells that migrated to the lower compartment were stained and counted. Upper: representative images of migrated cells. Bottom: bar graphs showing quantitative results from three independent experiments. ns indicates no significance.