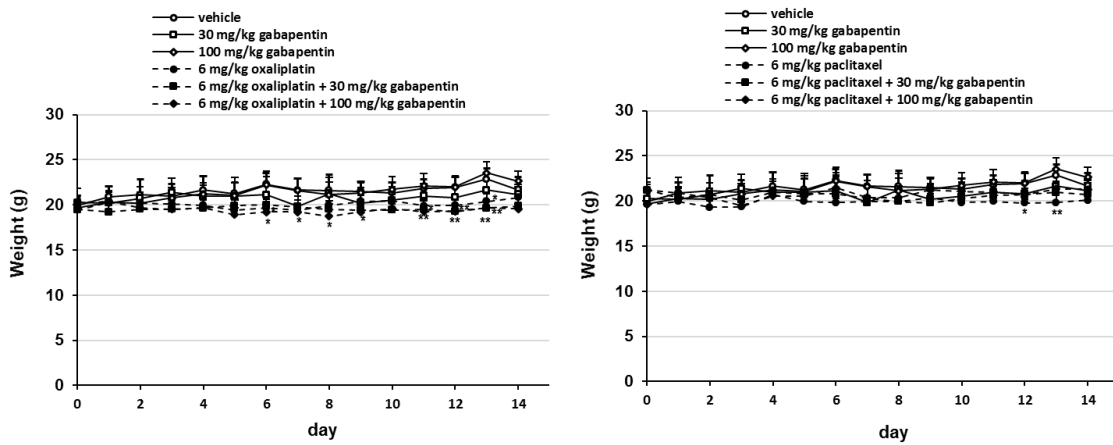
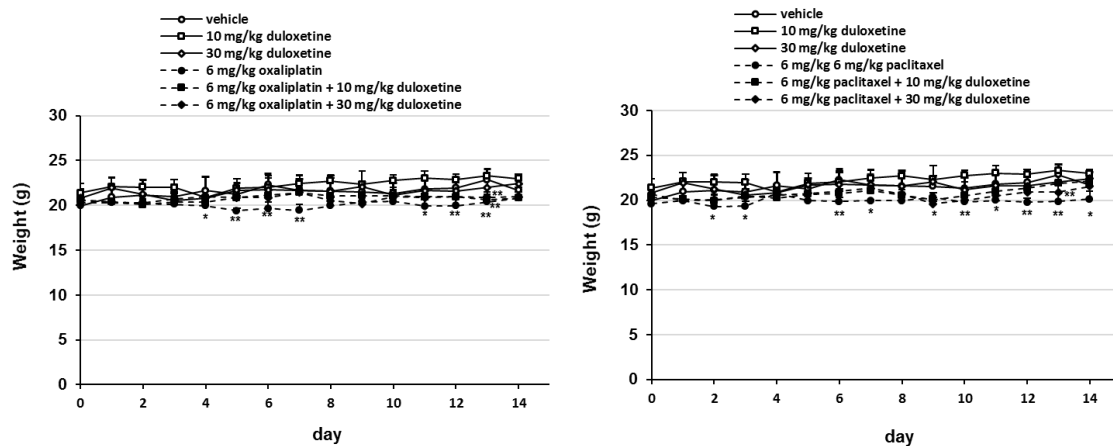


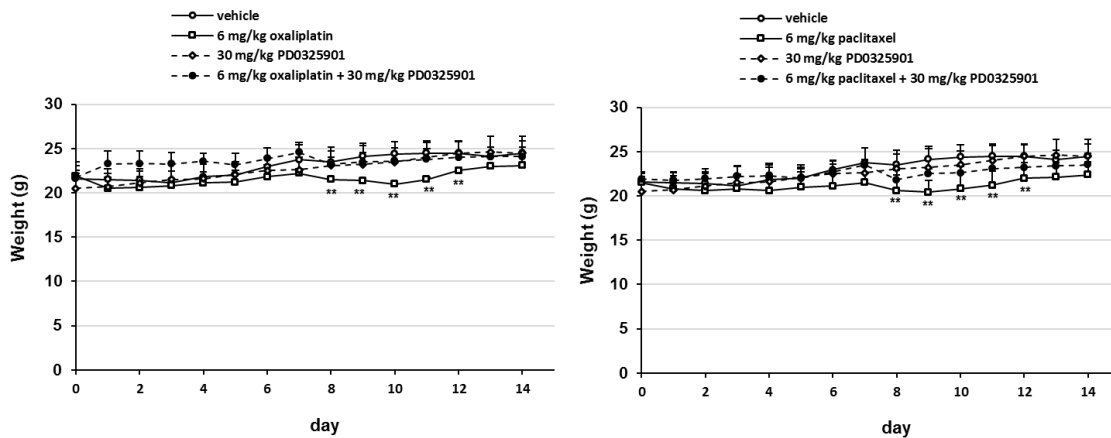
## Supplementary Figure



**Figure S1.** Safety of oxaliplatin, paclitaxel, and gabapentin administrated in vivo. Oxaliplatin (6 mg/kg, i.v.) and paclitaxel (6mg/kg, i.v.) were administered on days 0 and 7. Gabapentin (30 or 100 mg/kg, p.o.) was administered daily from days 0 to 14. Mice were weighed before the first treatment and daily throughout the treatment period. Data are presented as means and S.D. \*P < 0.05, \*\*P < 0.01 vs. vehicles (Shapiro-Wilk test and one-way analysis of variance (ANOVA) with Tukey test).

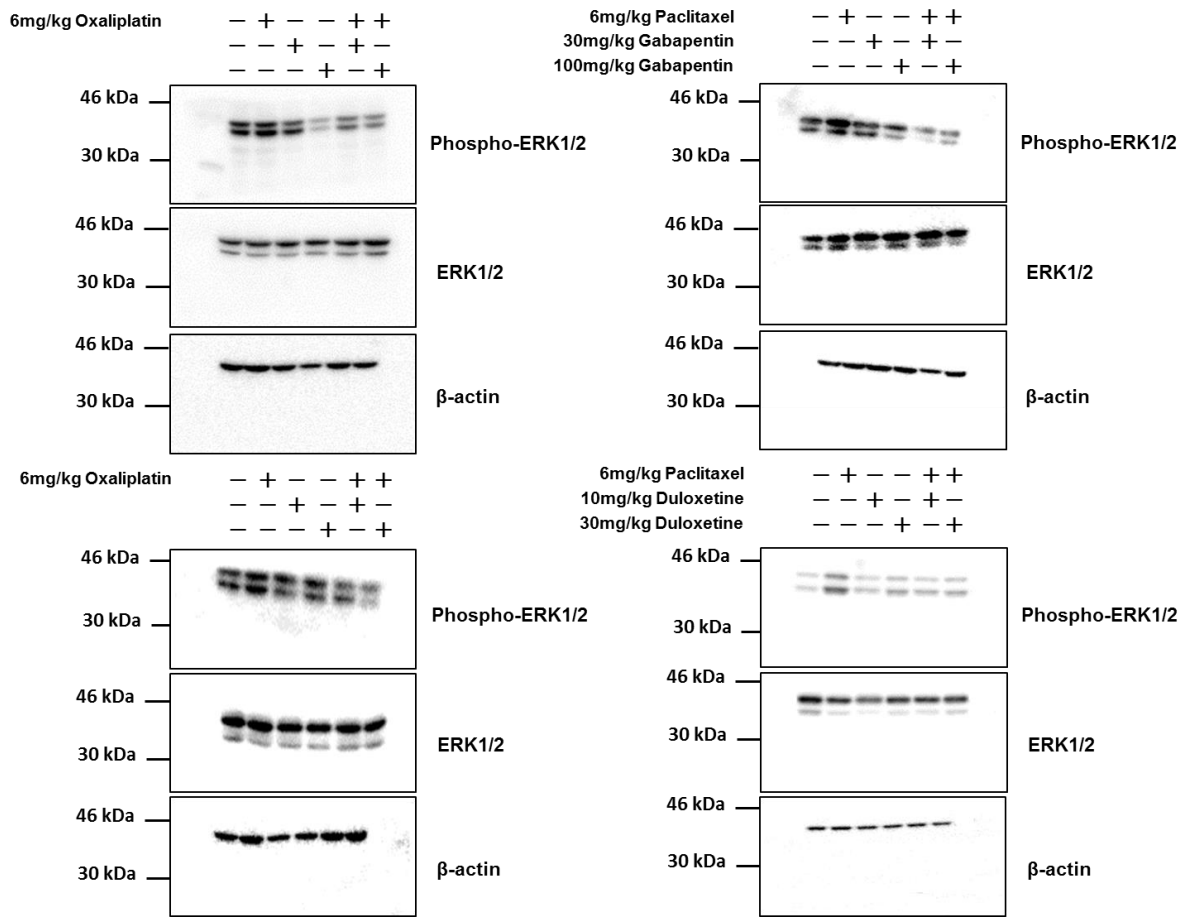


**Figure S2.** Safety of oxaliplatin, paclitaxel, and duloxetine administrated in vivo. Oxaliplatin (6 mg/kg, i.v.) and paclitaxel (6mg/kg, i.v.) were administered on days 0 and 7. Duloxetine (10 mg/kg or 30mg/kg, p.o.) was administered daily from days 0 to 14. Mice were weighed before the first treatment and daily throughout the treatment period. Data are presented as means and S.D. \*P < 0.05, \*\*P < 0.01 vs. vehicles (Shapiro-Wilk test and one-way analysis of variance (ANOVA) with Tukey test).



**Figure S3.** Safety of oxaliplatin, paclitaxel, and PD0325901 administrated in vivo. Oxaliplatin (6 mg/kg, i.v.) and paclitaxel (6mg/kg, i.v.) were administered on days 0 and 7). PD0325901 (30mg/kg, p.o.) was administered daily from days 0 to 14. Mice were weighed before the first treatment and daily throughout the treatment period. Data are presented as means and S.D. \*P < 0.05, \*\*P < 0.01 vs. vehicles (Shapiro-Wilk test and one-way analysis of variance (ANOVA) with Tukey test).

**Figure 5**



**Figure 8**

