

Supplementary material

Table S1. Summary of test stands with geographical coordinates and altitude above sea level.

Position/Study site (geographical name)	Geographical location	Elevation (m a.s.l.)
Łobozew	N 49° 23' 31.24" E 22° 31' 32.24"	568
Przełęcz Wyzna	N 49° 08' 56.80" E 22° 33' 04.47"	980
Połonina Wetlińska	N 49° 09' 36.68" E 22° 32' 43.38"	1215
Tarnica	N 49° 04' 35.38" E 22° 43' 34.50"	1320

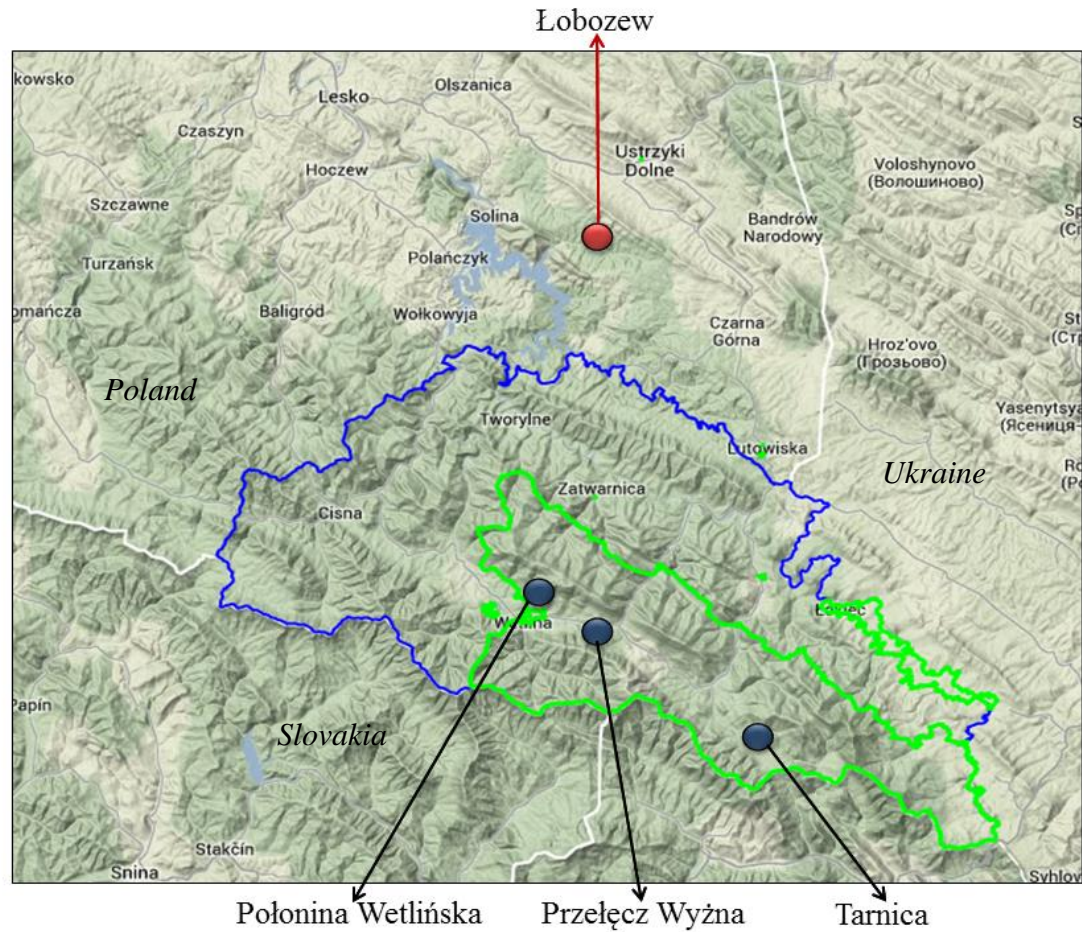
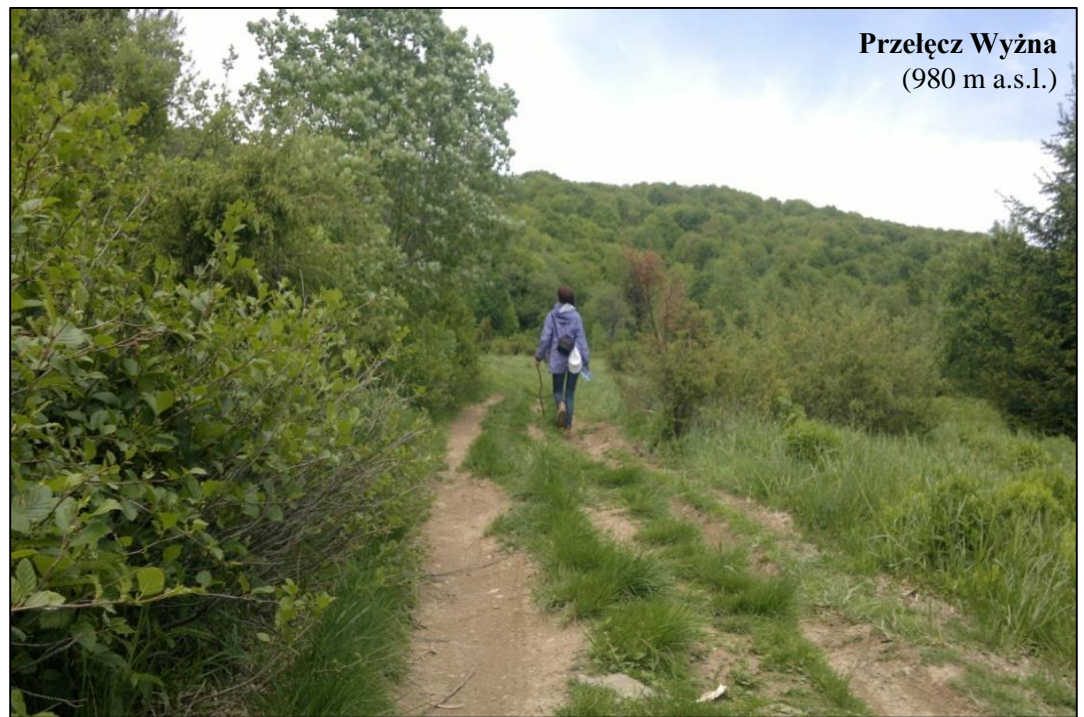


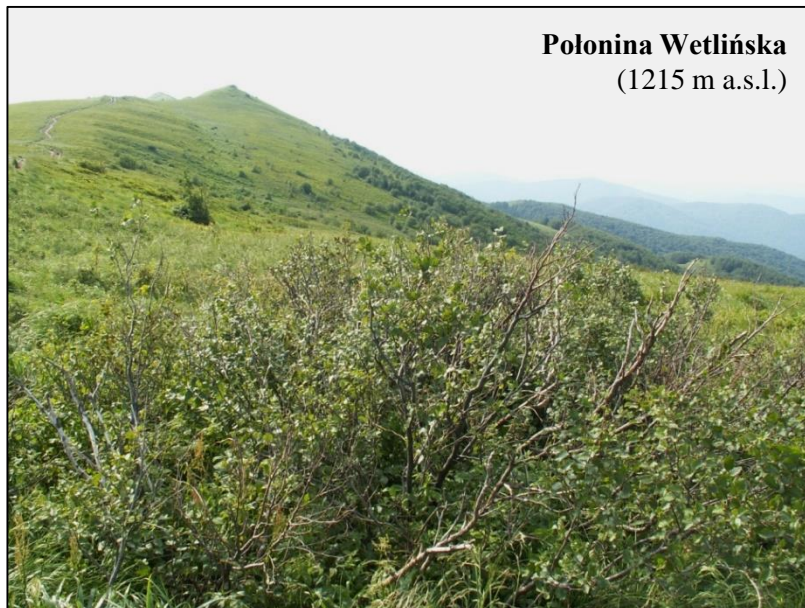
Figure S1. Study sites of the *Alnus viridis* (Chaix) DC. on the map. Green colour – the border of the Bieszczady National Park (BNP); blue colour – the border of buffer zone of the BNP; white colour – state borders.



**Locality near the
village of Lobożew
(568 m a.s.l.)**



**Przełęcz Wyzna
(980 m a.s.l.)**



**Polonina Wetlińska
(1215 m a.s.l.)**



**Tarnica
(1320 m a.s.l.)**

Figure S2. Study sites of the *Alnus viridis* (Chaix) DC. in the Bieszczady National Park (BNP) and buffer zone.