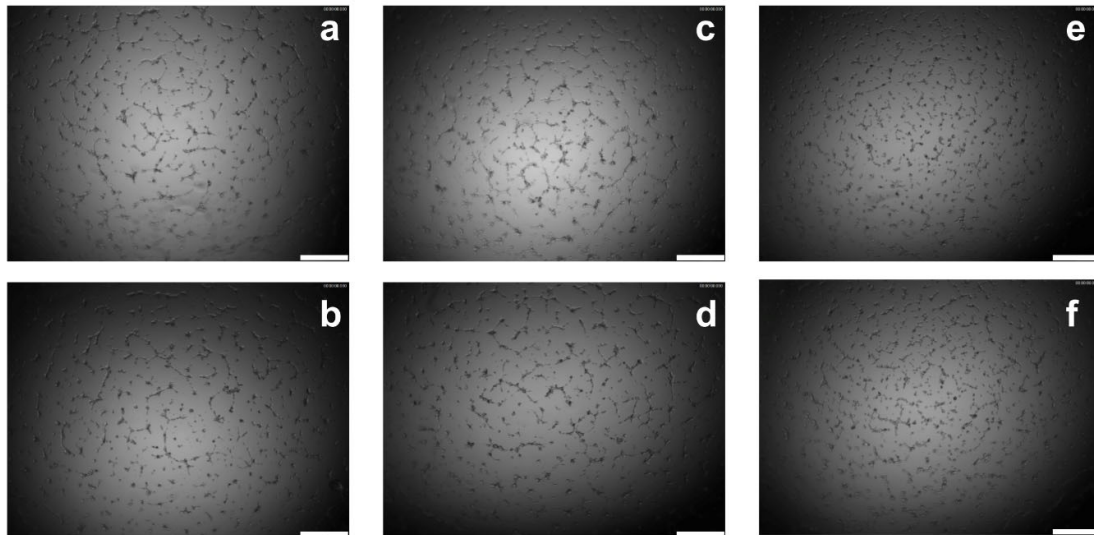


Supplemental Figure S1. Mevalonate decreases directional ECFC migration and reduces pravastatin (2000 μM) induced increase in directional migration. Representative images of DAPI-stained migrated ECFCs after treatment with 2000 μM pravastatin with or without 200 μM mevalonate. Con, control; Prava, pravastatin; Mev, mevalonate. Scale bar 150 μm .



Supplemental Figure S2. Mevalonate (200 μM) modulates pravastatin's effect on ECFCs' tube formation ability. Representative images of ECFCs' tube formation after 6 h in the presence of medium only (a), mevalonate (b), 20 μM pravastatin (c), 20 μM pravastatin + 200 μM mevalonate (d), 2000 μM pravastatin (e) or 2000 μM pravastatin + 200 μM mevalonate (f). Scale bar 500 μm .