

Figure S1. Characterisation of mammospheres. Expression of stem cell markers i.e. NANOG and SOX2 were analysed by western blotting GAPDH is used as loading control. All values are given as the mean \pm SE, *** p <0.001 *vs* mammospheres. All images are representative of three independent experiments.

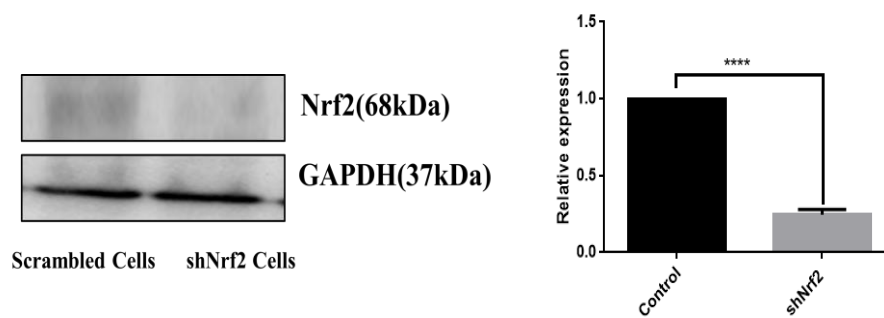


Figure S2. Nrf2 expression in Nrf2 knockdown cells. Expression of Nrf2 were analysed by western blotting and (B) RT-PCR. GAPDH is used as loading control. All values are given as the mean \pm SE, *** p <0.001 *vs* shNrf2 cells. All images are representative of three independent experiments.

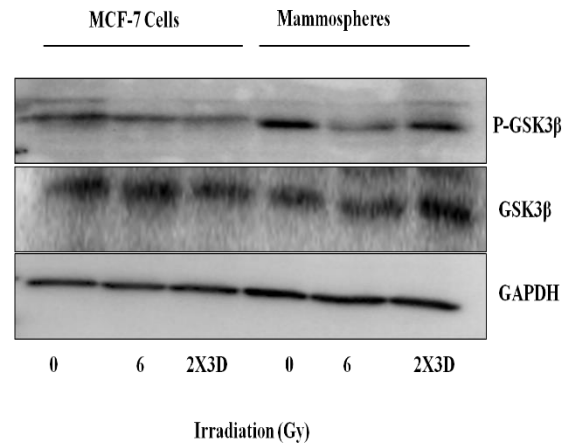


Figure S3. GSK3 β levels in fractionated dose irradiated MCF-7 cells and mammospheres. Expression of p-GSK3 β and GSK3 β were analysed by western blotting. GAPDH is used as loading control.

Gene Name	Forward Primer	Reverse Primer
Nrf2 (NEF2L2)	5' -TCAGCGACGGAAAGAGTATGA- 3'	5'-CCACTGGTTTCTGACTGGATGT-3'
Keap1	5'-CTGGAGGATCATACCAAGCAGG-3'	5'-GGATACCCTCAATGGACACCAC-3'
HO1	5'-AAGACTGCGTTCCTGCTCAAC-3'	5'-AAAGCCCTACAGCAACTGTCTG-3'
NQO1	5'-GAAGAGCACTGATCGTACTGGC-3'	5'-GGATACTGAAAGTTCCGAGGG-3'
SOX2	5'-GCCGAGTGGAACCTTTTGTCTG-3'	5'-GGCAGCGTGTACTTATCCTTCT-3'
NANOG	5'-CCCCAGCCTTTACTCTTCCTA-3'	5'-CCAGGTTGAATTGTTCCAGGTC-3'
KLF4	5'-CCCACATGAAGCGACTTCCC-3'	5'-CAGGTCCAGGAGATCGTTGAA-3'
CDH1(E-cadherin)	5'-TGCCCAGAAAATGAAAAAGG-3'	5'-GTGTATGTGGCAATGCGTTC-3'
VIM (Vimentin)	5'-CAGGAACAGCATGTCCAAATC-3'	5'-GGCAGCCACACTTTCATATTG-3'
SNAIL(SNAIL)	5'-AGCCTGGGTGCCCTCAAGATG-3'	5'-CTTGCTGCTTGTGGAGCAGGGAC-3'
SNAIL2 (SLUG)	5'-GTCATACCACAACCAGAGATCC-3'	5'-GAGTATCCGGAAGAGGAGAGA-3'

Table S1. List of primers