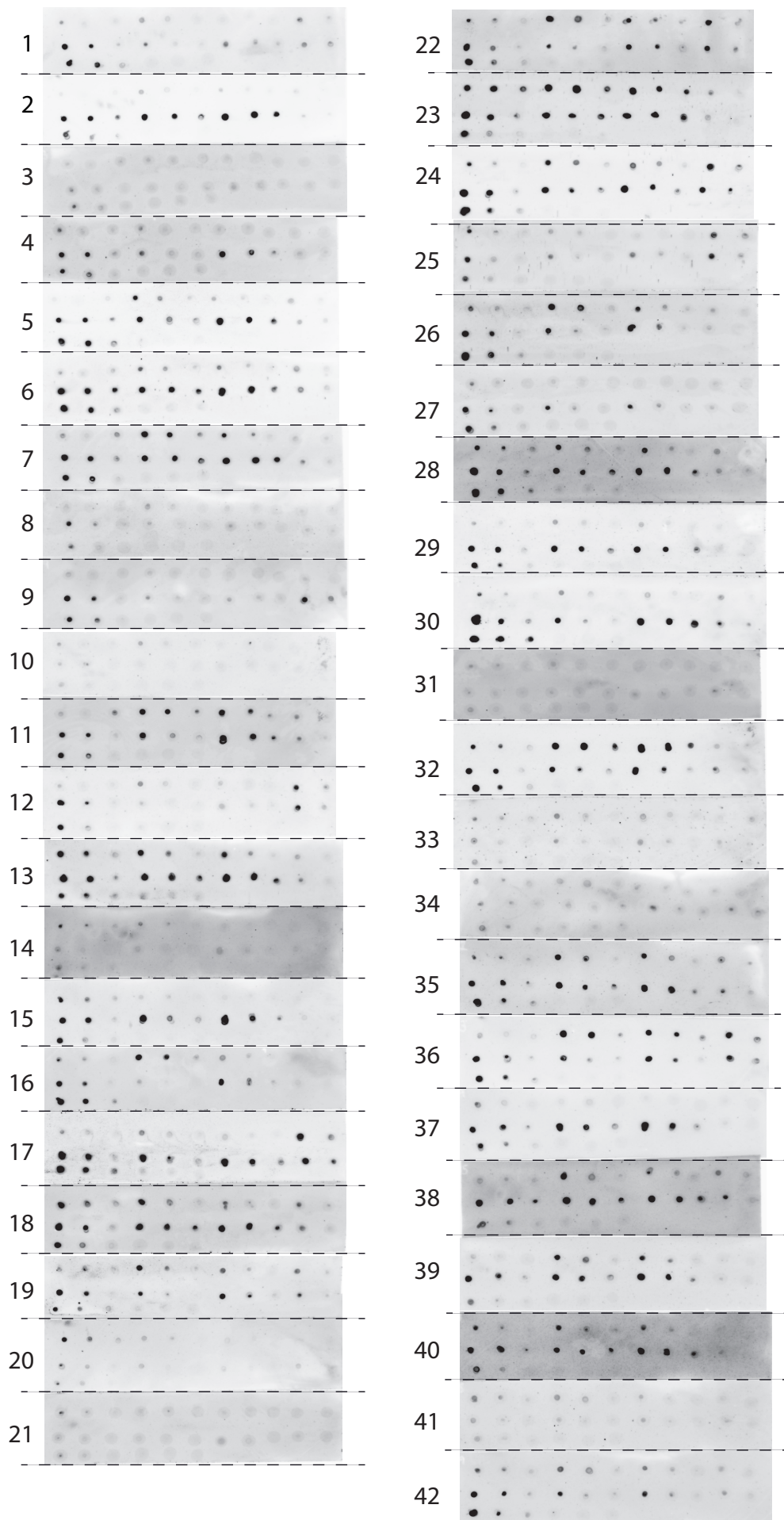


Supplementary Fig. S1. Rabbit polyclonal anti-N protein antibody is able to detect the N protein by dot blot. (A) Extracts of 293T cells transiently expressing GFP-SARS-CoV-2 N fusion protein were analyzed for western blot with the indicated antibodies. Anti-N-SARS-CoV-2 in a 1:8,000 dilution. (B) Dot blot assay with the indicated protein amounts of the recombinant purified His-tagged SARS-CoV-2 N protein, detected by the rabbit anti-N antibody.

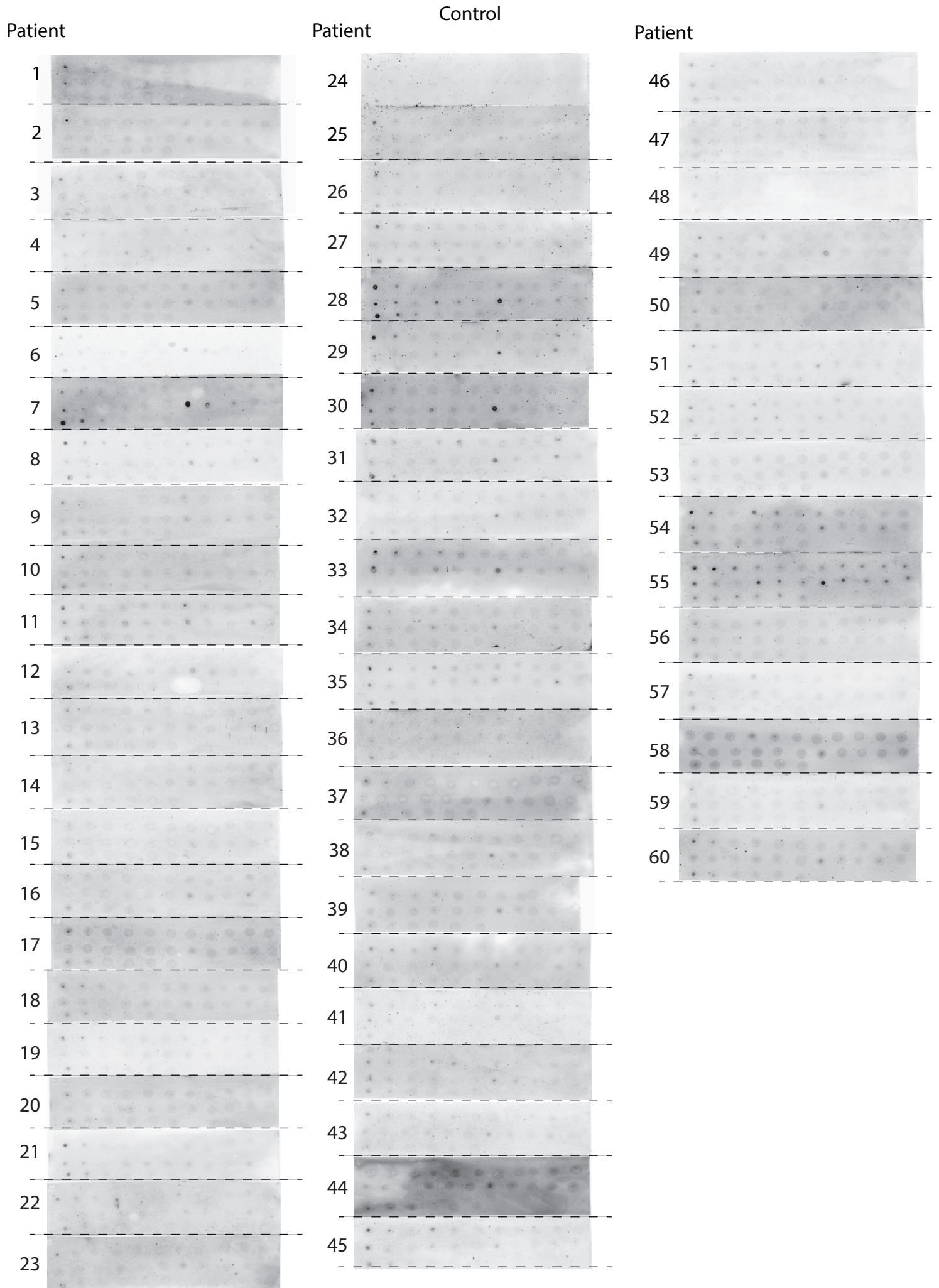
SARS-CoV-2 positive

Patient

Patient



Supplementary Fig. 2. Dot blots probed with COVID-19 patient sera display reactivity to SARS-CoV-2 N protein. Dot blots developed using sera from SARS-CoV-2 positive patients.



Supplementary Fig. 3. Control patients show very low or absent IgG antibody response to SARS-CoV-2. Dot blots developed using sera from control patients, collected during February 2019.