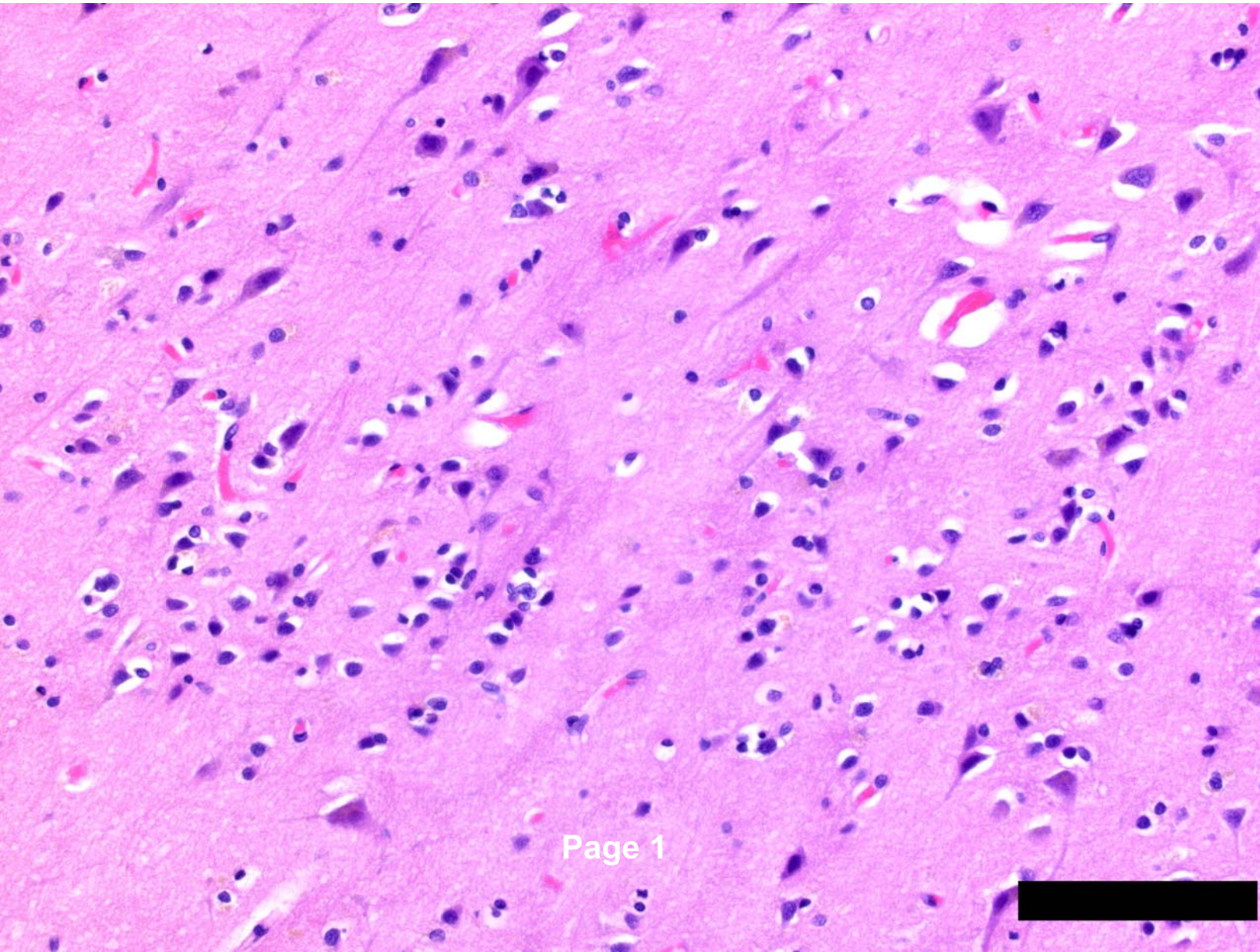


THE LANCET

Supplementary appendix

This appendix formed part of the original submission. We post it as supplied by the authors.

Supplement to: Nasrallah MP, Mourelatos Z, Lee EB. Neuropathology associated with SARS-CoV-2 infection. *Lancet* 2021; **397**: 277.



Page 1

Figure: A hematoxylin and eosin-stained autopsy section of parietal cortex with no specific pathologic change shows artifactually “shrunk” neurons, and numerous small glial cells. Scale bar: 100 microns.