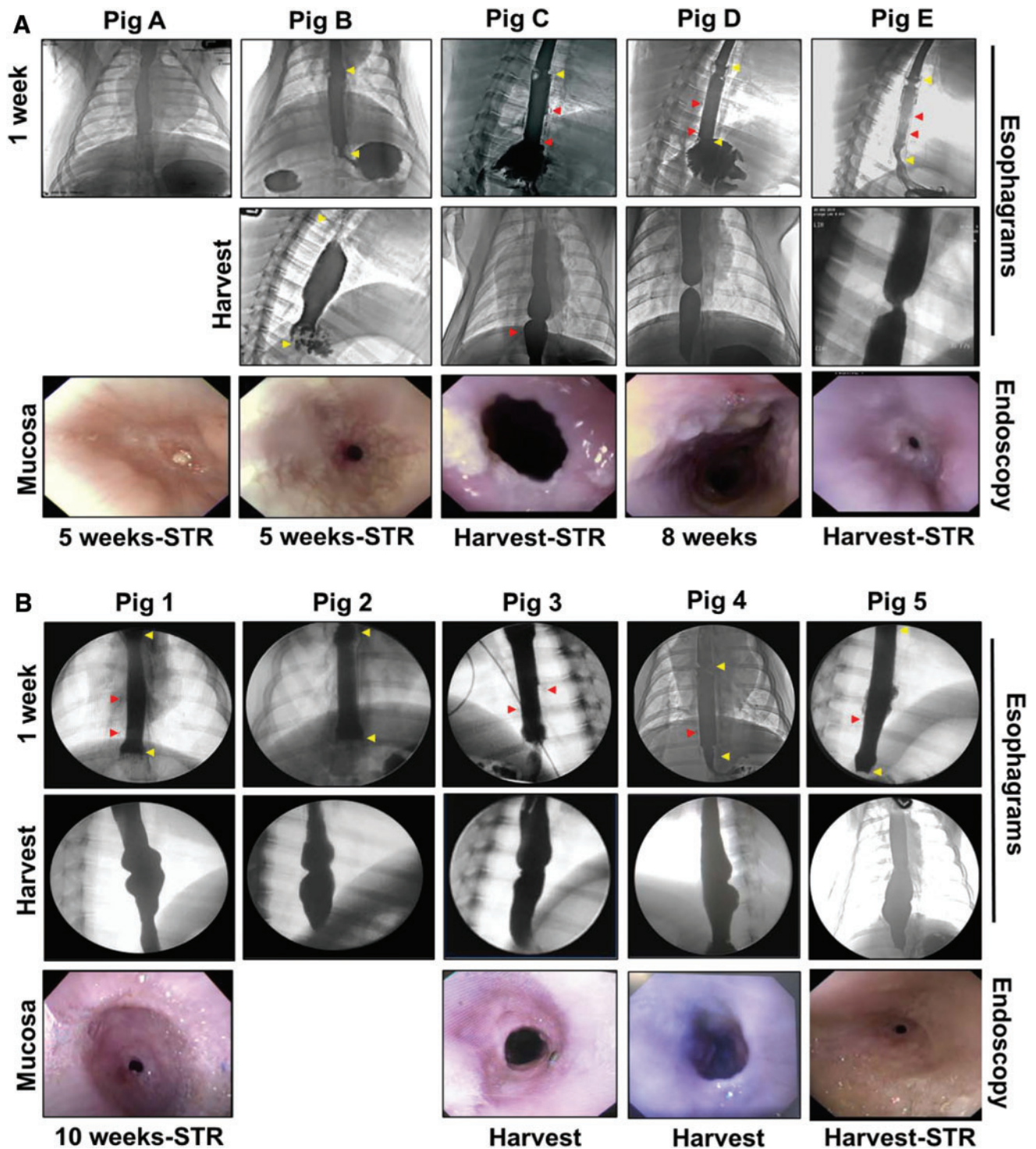


## Supplementary Data



**SUPPLEMENTARY FIG. S1.** Radiologic imaging and esophagoscopy evaluations of pilot and study group replicates. (A) Pigs A–E and (B) Pigs 1–5. Barium esophagrams of matrix-grafted swine at 1 week (*top row*) and harvest (*second row*) postop in both panels. Endoscopic assessments (*bottom row*) at various experimental time points are displayed. STR defines the presence of a stricture during analysis. *Yellow arrowheads* mark stent boundaries. *Red arrowheads* annotate the radioopaque marking sutures where visible. STR, stricture.