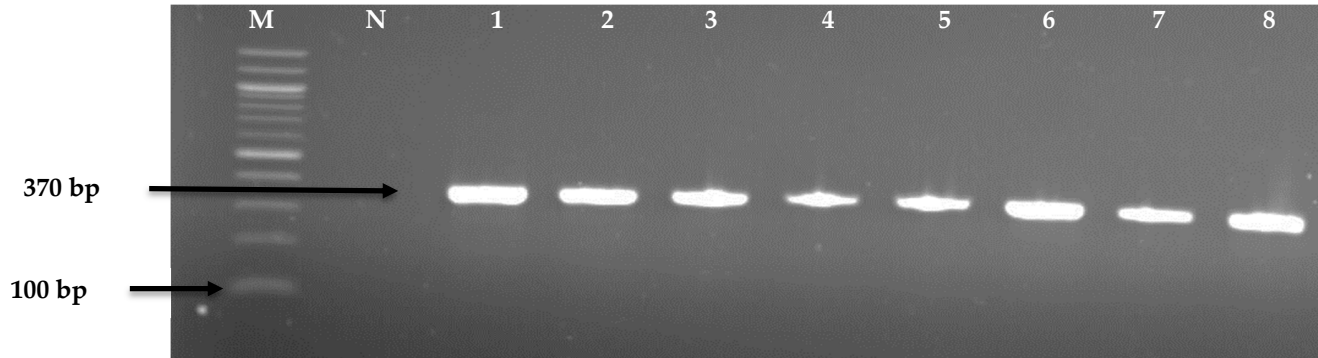
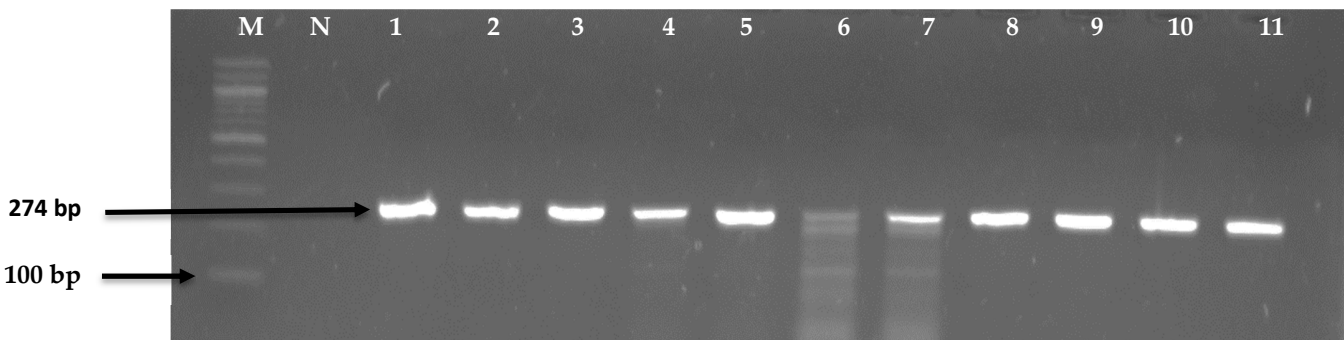


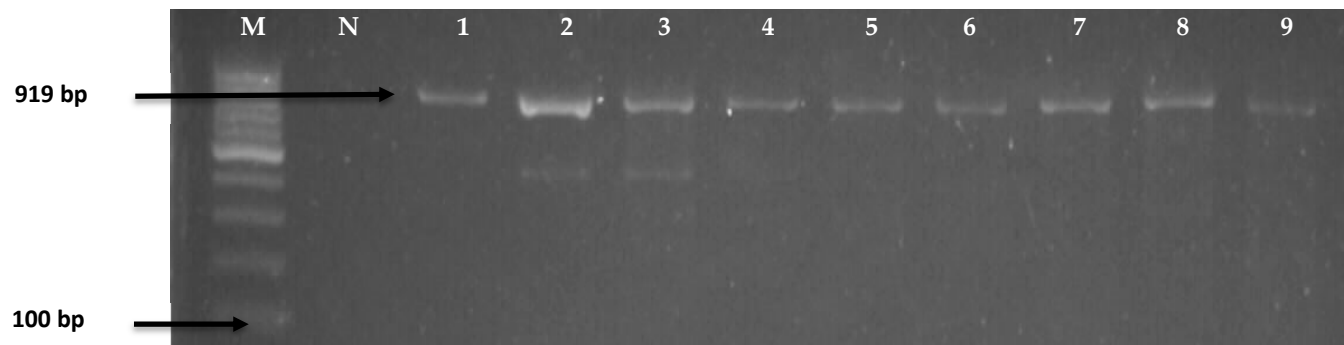
Supplementary Figures



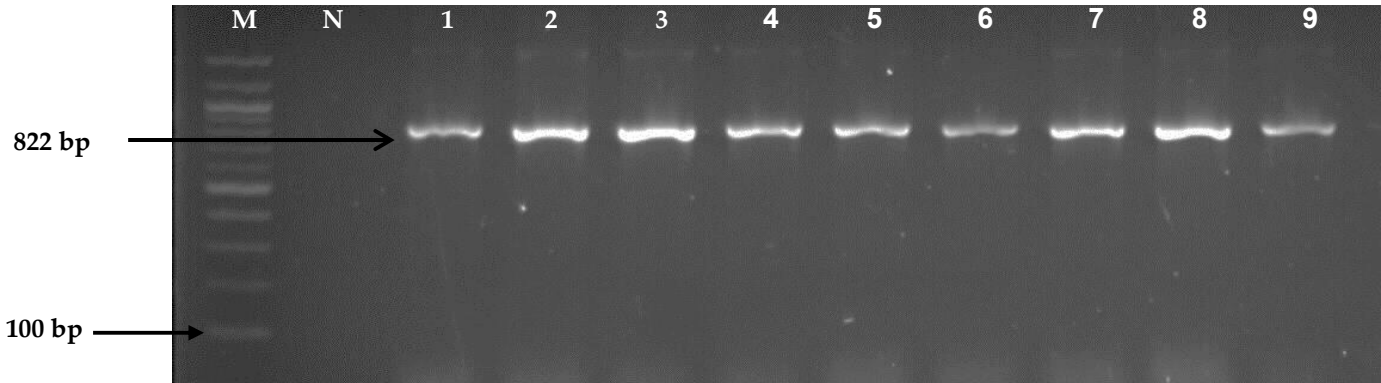
Supplementary Figure S1. PCR products of the amplification of *prs* gene. Lane 1-8: positive *Listeria* spp. isolates; Lane M: 100bp molecular weight marker (ThermoFisher™ Scientific, (EU) Lithuania); Lane N: negative PCR control (no DNA).



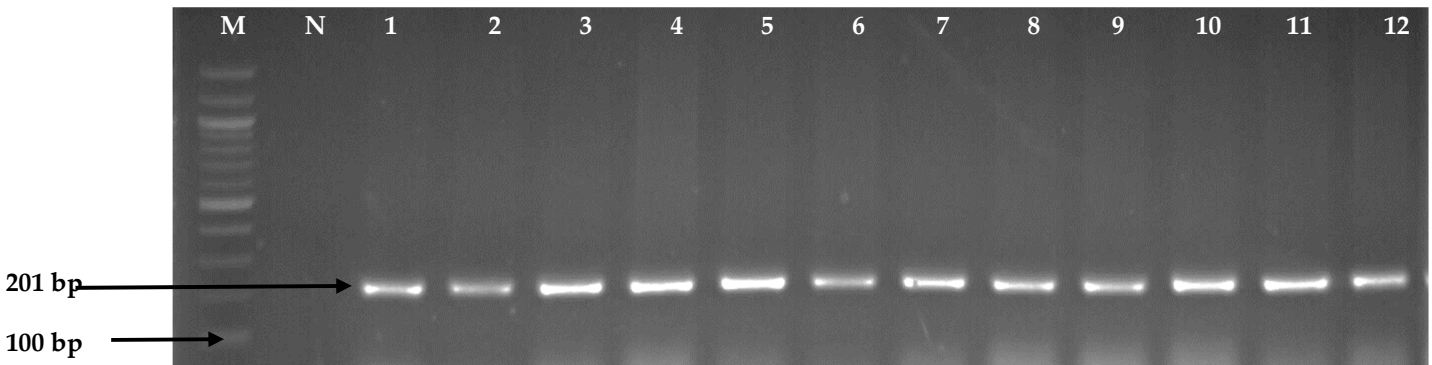
Supplementary Figure S2. PCR products of the amplification of *prfA* gene. Lane 1-11: positive *L. monocytogenes* isolates; Lane M: 100bp molecular weight marker (ThermoFisher™ Scientific, (EU) Lithuania); Lane N: negative PCR control (no DNA).



Supplementary Figure S3. PCR products of the amplification of 16S rRNA gene. Lane 1-9: positive *L. welshimeri* isolates; Lane M: 100bp molecular ladder (ThermoFisher™ Scientific, (EU) Lithuania); Lane N: negative PCR control (no DNA).



Supplementary Figure S4. PCR products of the amplification of *sull* gene. Lane 1-9: *Listeria* isolates that harbour *sull* gene (822 bp); lane M: 100bp molecular weight marker (ThermoFisher™ Scientific, (EU) Lithuania); Lane N: negative PCR control (no DNA).



Supplementary Figure S5. PCR products of the amplification of *tetA* gene. Lane 1-12: *Listeria* isolates that harbour *tetA* gene (201 bp); lane M: 100bp molecular weight marker (ThermoFisher™ Scientific, (EU) Lithuania); Lane N: negative PCR control (no DNA).