

SARS-CoV-2 epitope mapping on microarrays highlights strong immune-response to N protein region

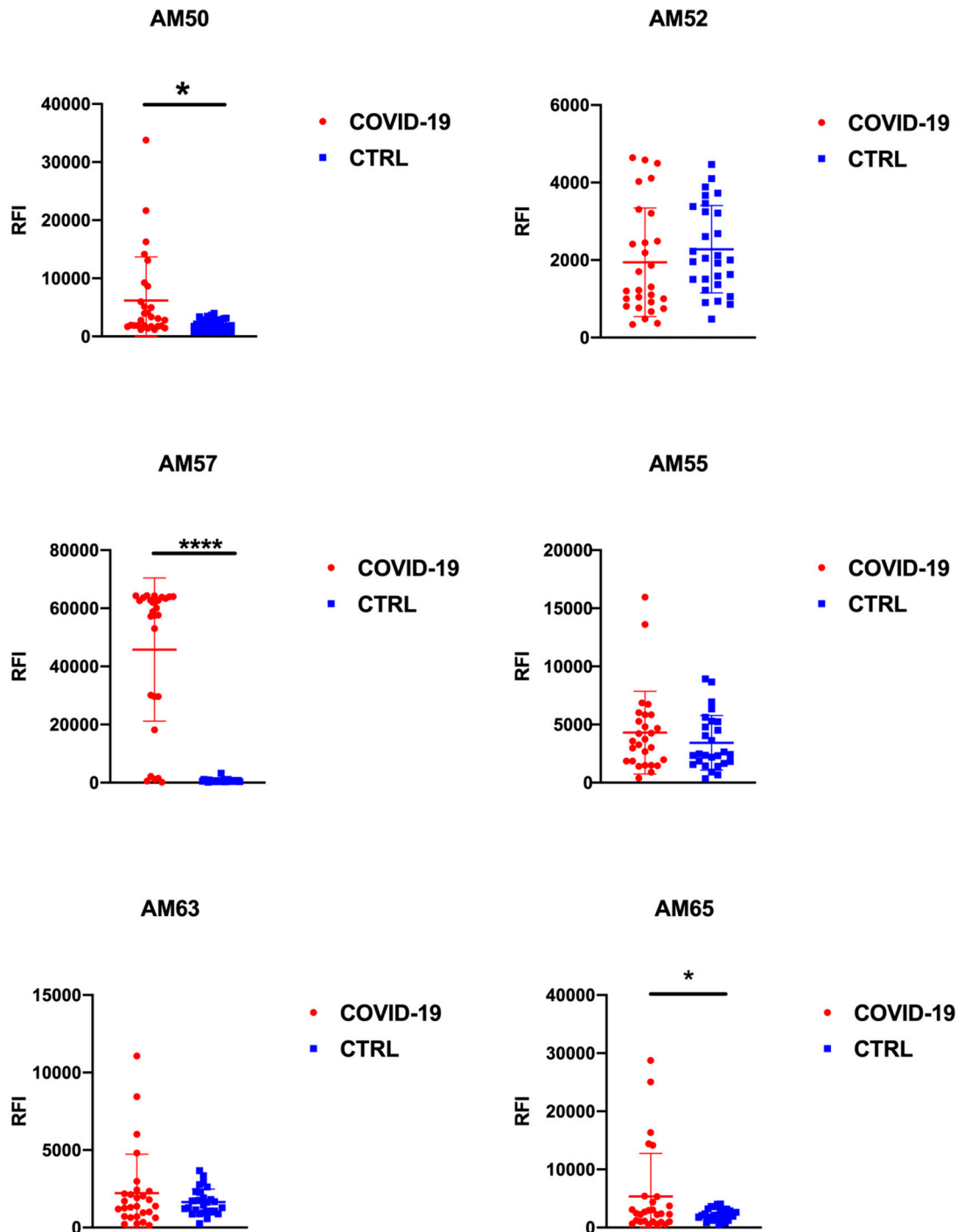


Figure S1. unpaired t-Test results for the peptide specific IgG. Peptide arrays displaying six peptide probes were probed with sera (N = 28) from COVID-19 patients and control patients (N = 28). Significant: $p < 0.05$; * = $p < 0.05$; *** = $p < 0.001$; **** = $p < 0.0001$.

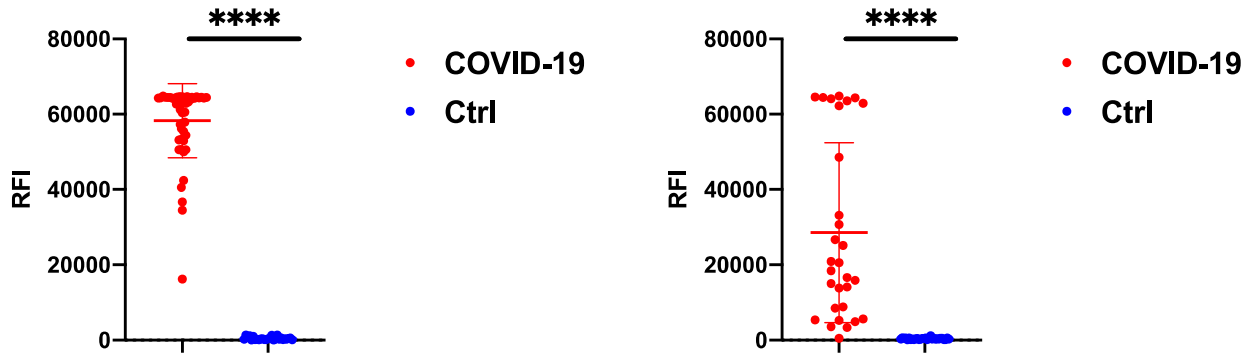


Figure S2. Left panel: IgG immunoreactivity on full N antigen. Right panel: IgM immunoreactivity on the full N antigen. **** = $p < 0.0001$.