

Supplementary materials

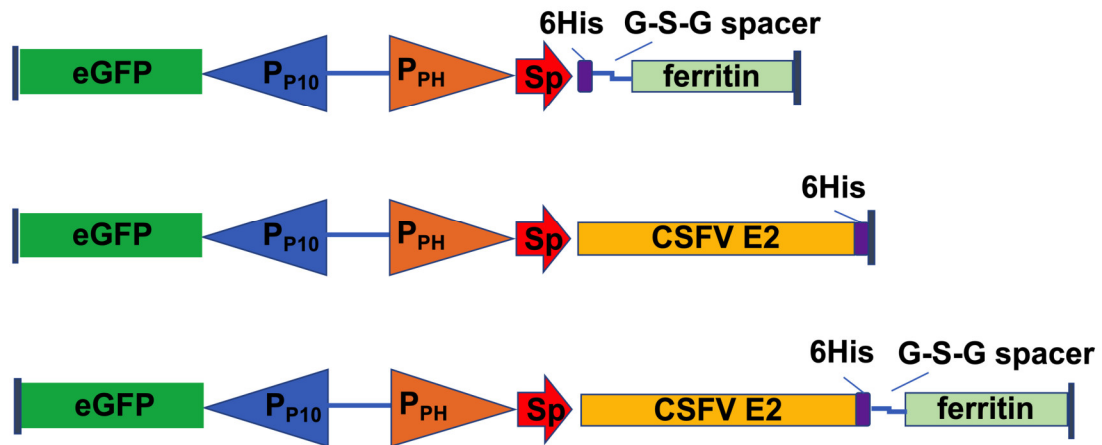


Figure 1. The construction of different forms of vaccines of figure 1a is.

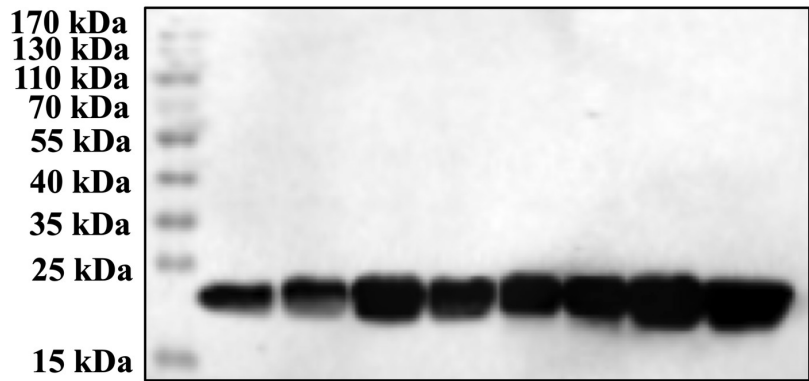


Figure 2. The whole blot (uncropped blots) showing all the bands with all molecular weight markers of figure 2a is.

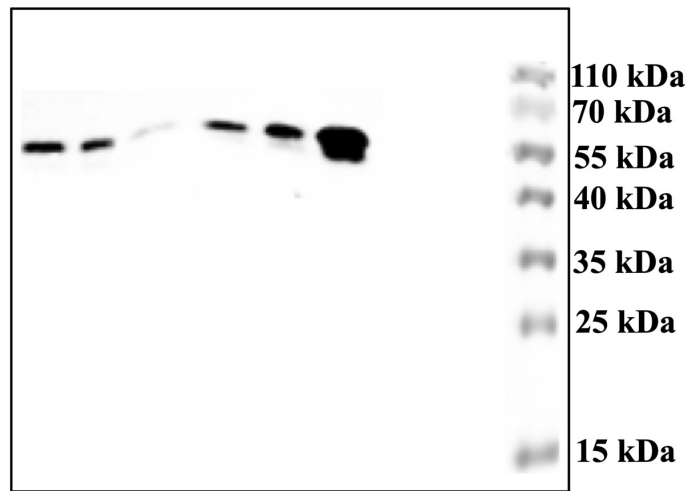


Figure 3. The whole blot (uncropped blots) showing all the bands with all molecular weight markers of figure 2b is.

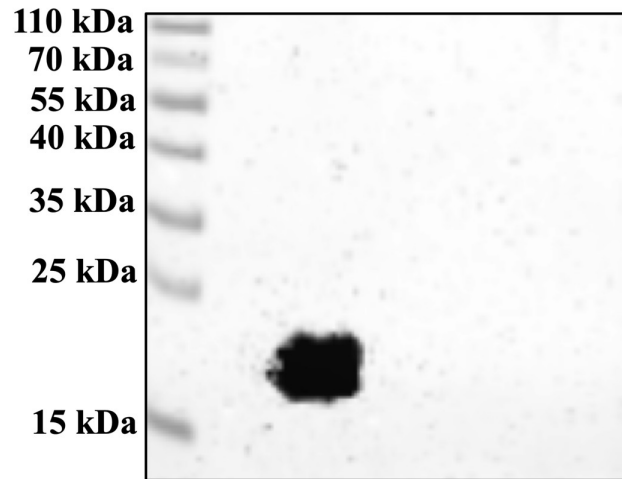


Figure 4. The whole blot (uncropped blots) showing all the bands with all molecular weight markers of figure 2e is.

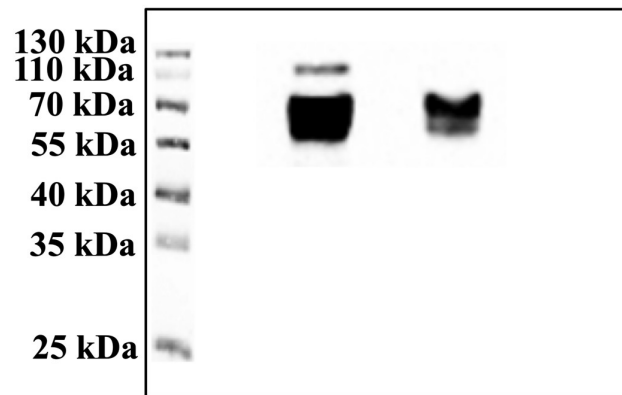


Figure 5. The whole blot (uncropped blots) showing all the bands with all molecular weight markers of figure 2f is.

Table S1. LgCopies of CSFV/ μ g total RNA read in Figure 5b and 5c is.

Cohort	Viral spleen load	Mean 1 (spleen)	Viremia	Mean 2 (viremia)
PBS	689.9; 512.2; 1294.9; 550.4;	761.85	542.9; 592.1; 396.8; 457.9;	497.425
<i>pfe</i>	560.5; 542.6; 1178.9; 391.6;	668.4	465.5; 344.6; 368.3; 493.6;	418
<i>pE2-fe</i>	280.2; 199.9; 241.2; 228.1;	237.35	146.3; 136.4; 225.6; 329.5;	209.45
<i>pE2-fe/Gel02</i>	145.2; 183.6; 131.9; 132.4;	148.275	117.4; 189.3; 139.1; 213.9;	164.925
<i>E2-fe/Gel02</i>	190.4; 231.5; 178.1; 284.2;	221.05	183.2; 131.6; 213.1; 178.2;	176.525

pE2	228.1; 310.6; 148.9; 156.3;	210.975	239.1; 221.4; 118.3; 149.3;	182.025
C-strain	210.7; 179.4; 148.3; 230.7;	192.275	129.7; 219.3; 308.1; 170.3;	206.85