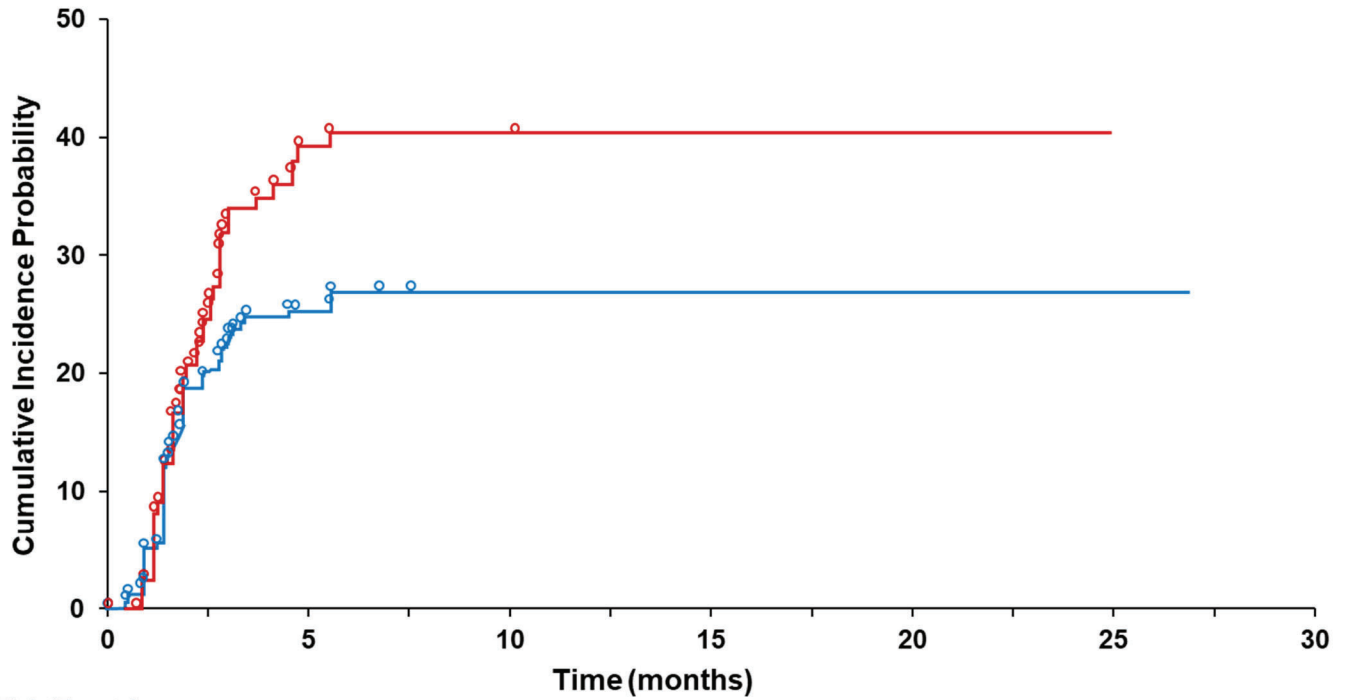


Supplementary Figure 1E. Cumulative Incidence of First Onset of Grade  $\geq 3$  TAE in Previously Untreated Patients only, del(17p) yes or no (log-rank  $p=0.02$ )



N at Risk (Events)

Yes	122 (0)	52 (46)	30 (47)	8 (47)	3 (47)	1 (47)	1 (47)
No	234 (0)	138 (57)	105 (60)	47 (60)	14 (60)	7 (60)	1 (60)