

Additive-manufactured Gyroid Scaffolds of Magnesium Oxide, Phosphate Glass Fiber and Polylactic acid Composite for Bone Tissue Engineering

Lizhe He ¹, Xiaoling Liu ^{1,2,3,*} and Chris Rudd ⁴

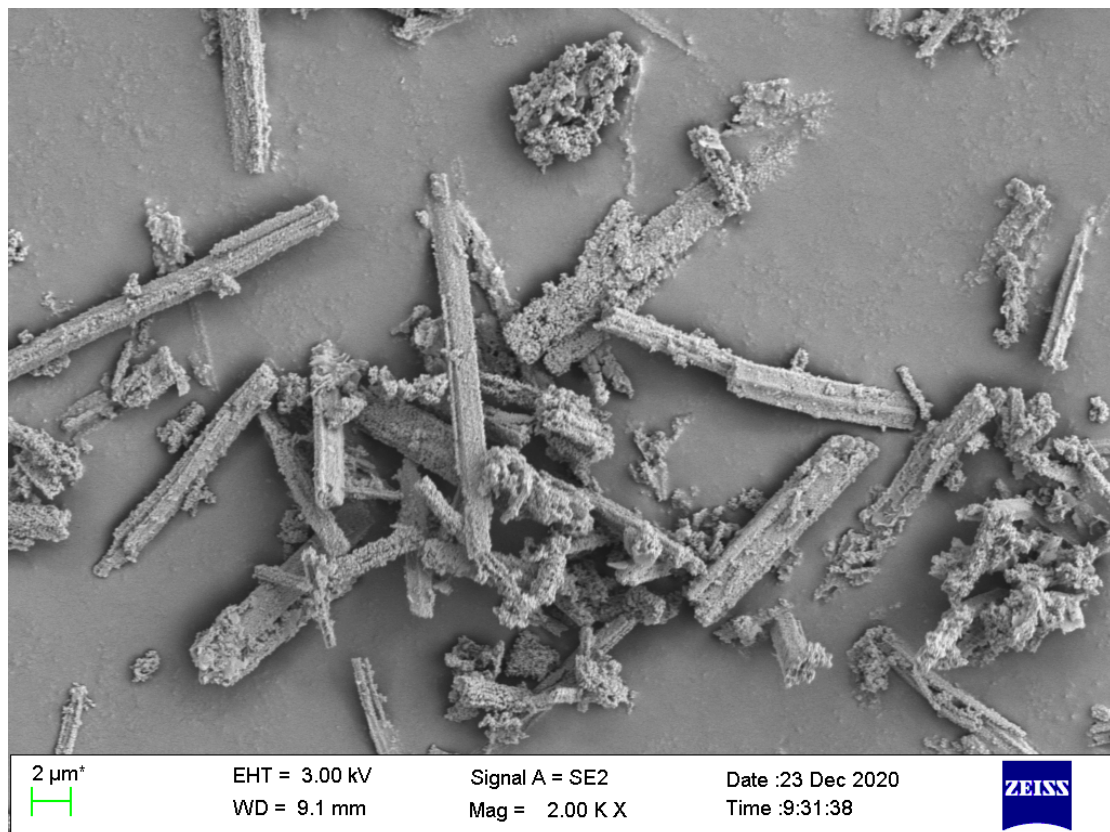


Figure S1. SEM image of MgO rod-like microparticles.

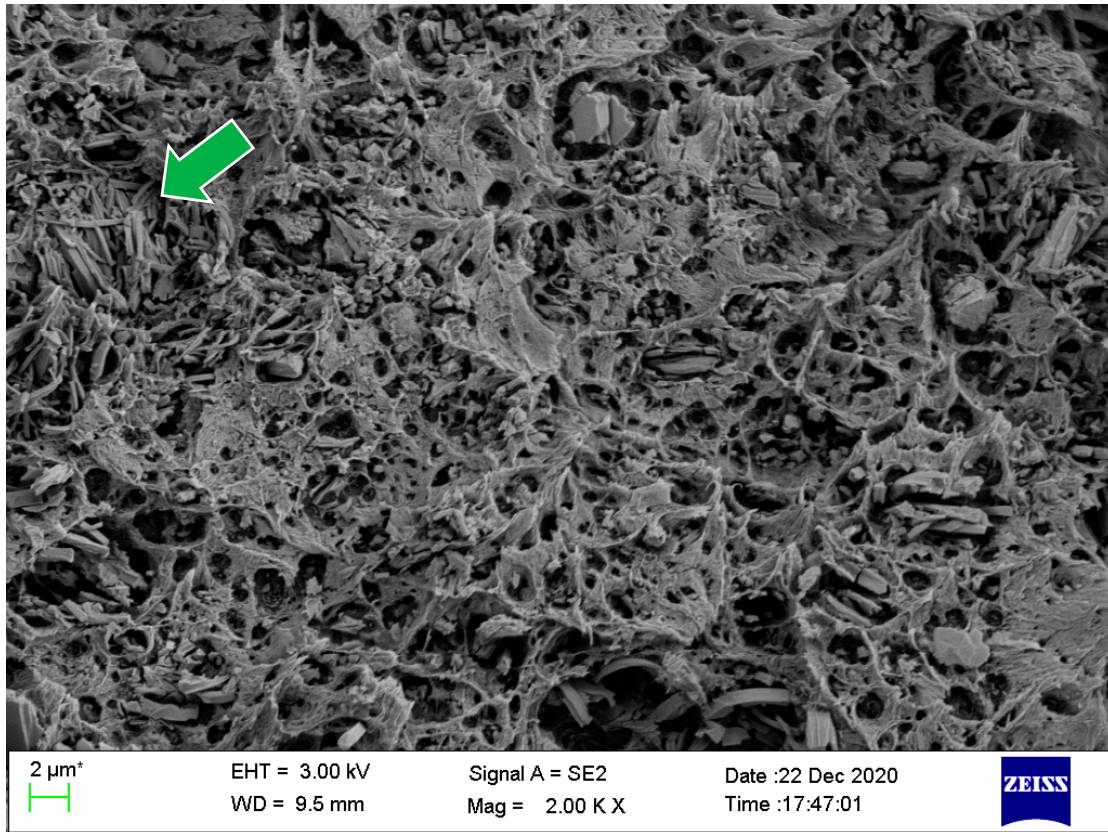


Figure S2. Freeze-fractured surface of a MgO/PLA composite scaffold after 14 days of immersion in Tris-HCl buffer. The arrow points at the rod-like MgO nanoparticles

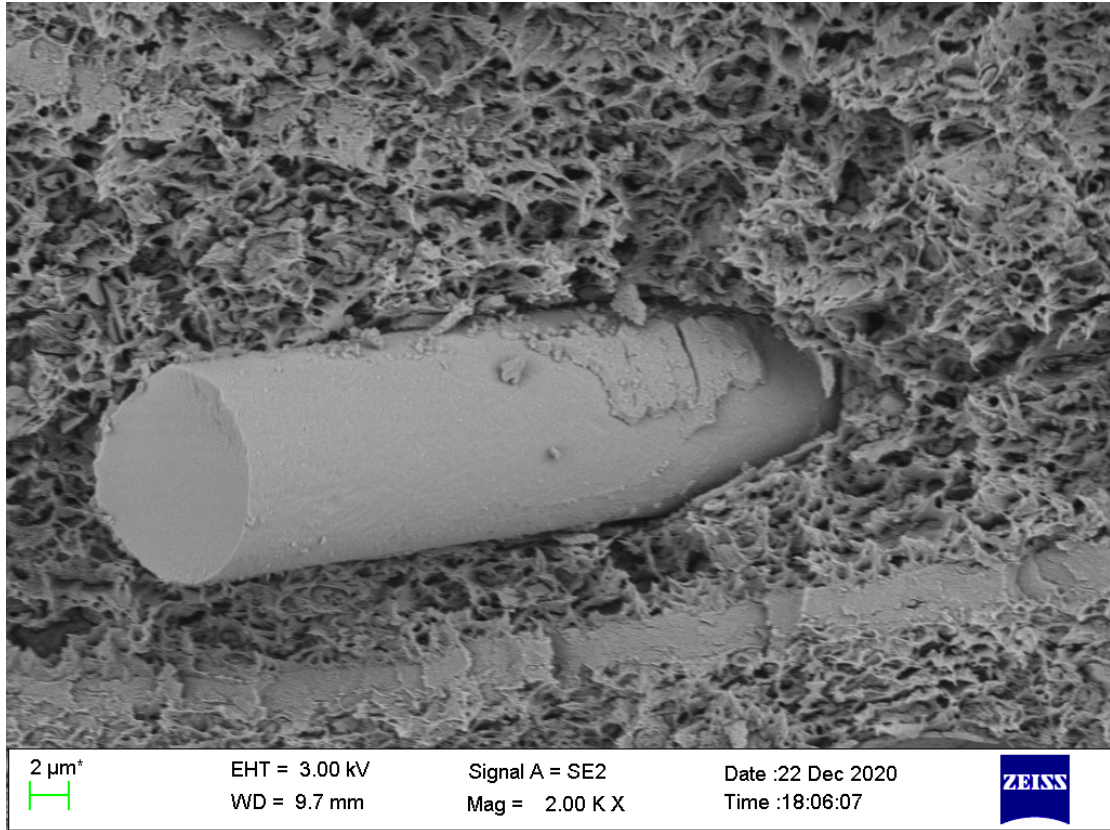


Figure S3. Freeze-fractured surface of a (MgO+PGF)/PLA composite scaffold after 14 days of immersion in Tris-HCl buffer.

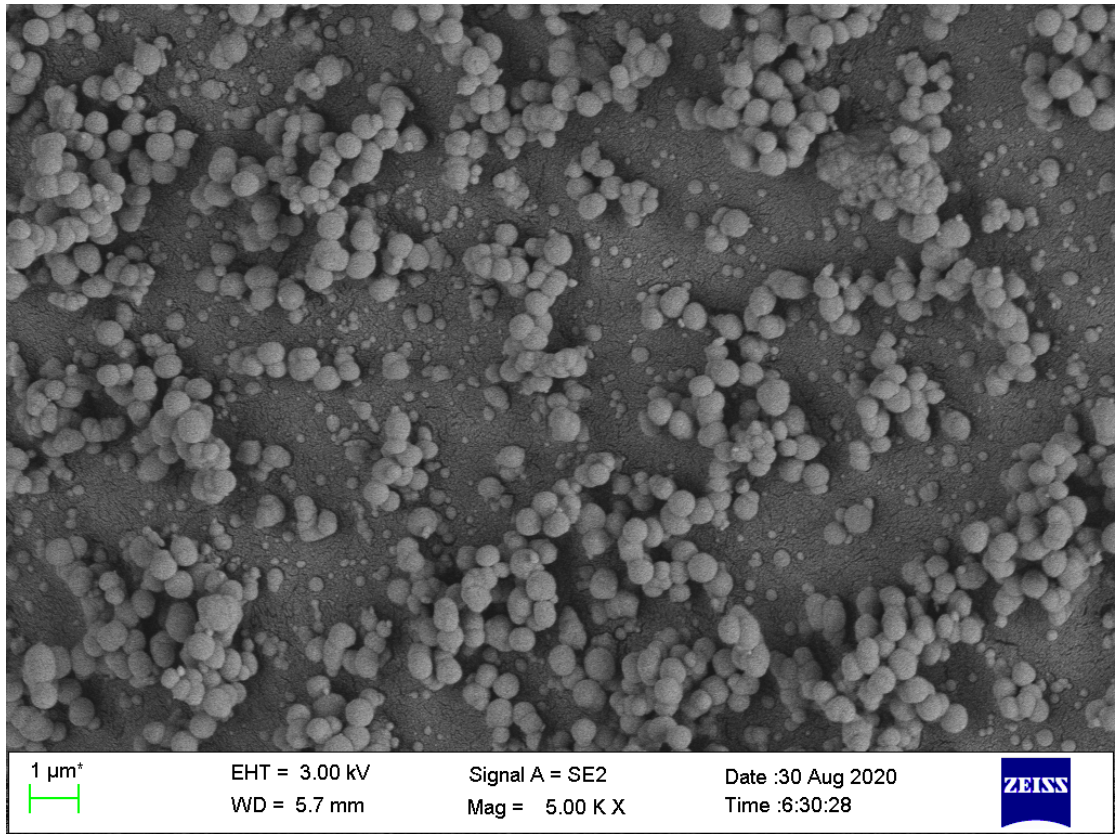


Figure S4. Top surface of a PGF/PLA composite scaffold after 14 days of immersion in Tris-HCl buffer (under a higher magnification of 5000x).