

Targeting S100B with Peptides Encoding Intrinsic Aggregation-Prone Sequence Segments

Joana S. Cristóvão ^{1,2}, Mariana A. Romão ^{1,2}, Rodrigo Gallardo ^{3,4,†}, Joost Schymkowitz ^{3,4,*}, Frederic Rousseau ^{3,4,*} and Cláudio M. Gomes ^{1,2,*}

- ¹ Biosystems and Integrative Sciences Institute, Faculdade de Ciências, Universidade Lisboa, 1749-016 Lisbon, Portugal; jmcristovao@fc.ul.pt (J.S.C.); maromao@fc.ul.pt (M.A.R.)
 - ² Departamento de Química e Bioquímica, Faculdade de Ciências, Universidade Lisboa, 1749-016 Lisbon, Portugal
 - ³ VIB Switch Laboratory, Flanders Institute for Biotechnology (VIB), 3000 Leuven, Belgium; rodrigo.gallardo@switch.vib-kuleuven.be
 - ⁴ Switch Laboratory, Department of Cellular and Molecular Medicine, KU Leuven, Herestraat 49, PB 802, 3000 Leuven, Belgium
- * Correspondence: cmgomes@fc.ul.pt (C.M.G.); frederic.rousseau@kuleuven.vib.be (F.R.); joost.schymkowitz@kuleuven.vib.be (J.S.)
- † Current address: Astbury Centre for Structural Molecular Biology, School of Molecular and Cellular Biology, University of Leeds, Leeds LS2 9JT, UK

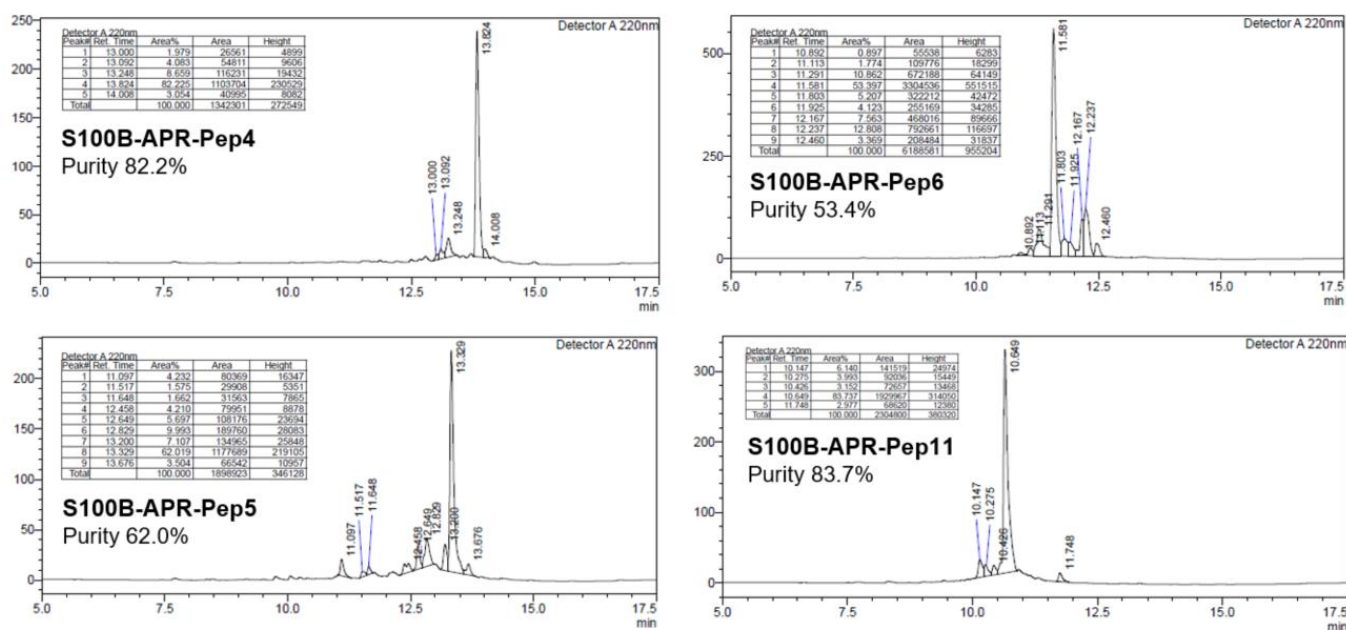


Figure S1. HPLC chromatograms of the synthesized APR-S100B peptides.