

Supplementary Materials: RNA-Binding Protein La Mediates TGF β -Induced Epithelial to Mesenchymal Transition and Cancer Stem Cell Properties

Tilman Heise and Gunhild Sommer

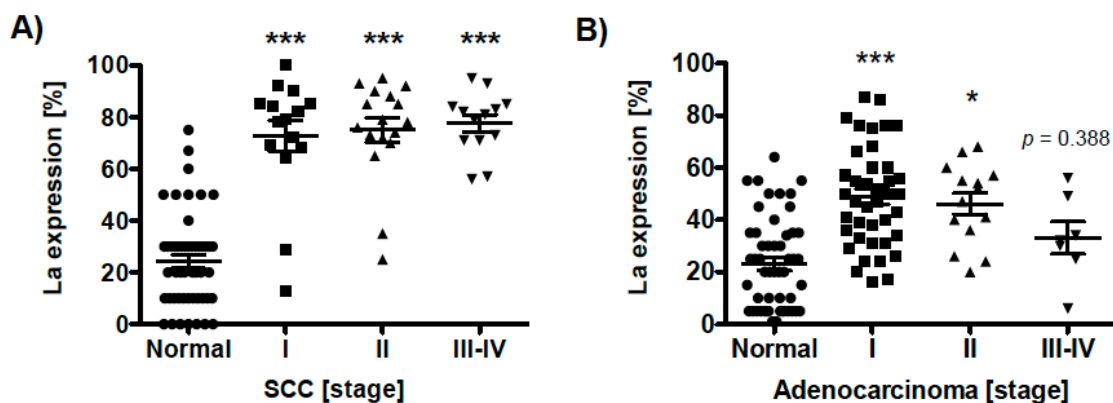


Figure S1. Overexpression of RBP La in lung cancer tissue analyzed by cancer stage. (A) SCC (B) adenocarcinoma (p -value < 0.05 (one asterisk), < 0.001 (three asterisks)).

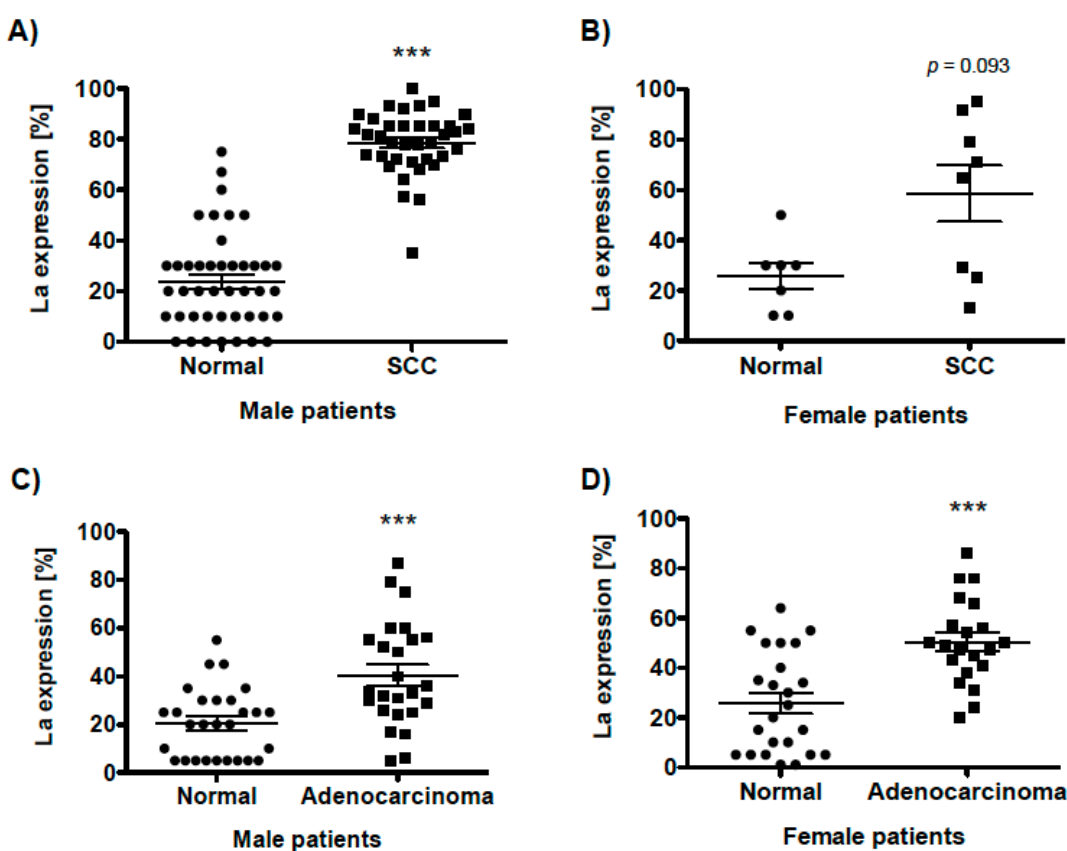


Figure S2. Overexpression of RBP La in lung cancer tissue analyzed regarding sex differences: (A) SCC, male, (B) SCC, female, (C) adenocarcinoma, male, (D) adenocarcinoma, female (p -value < 0.001 (three asterisks)).

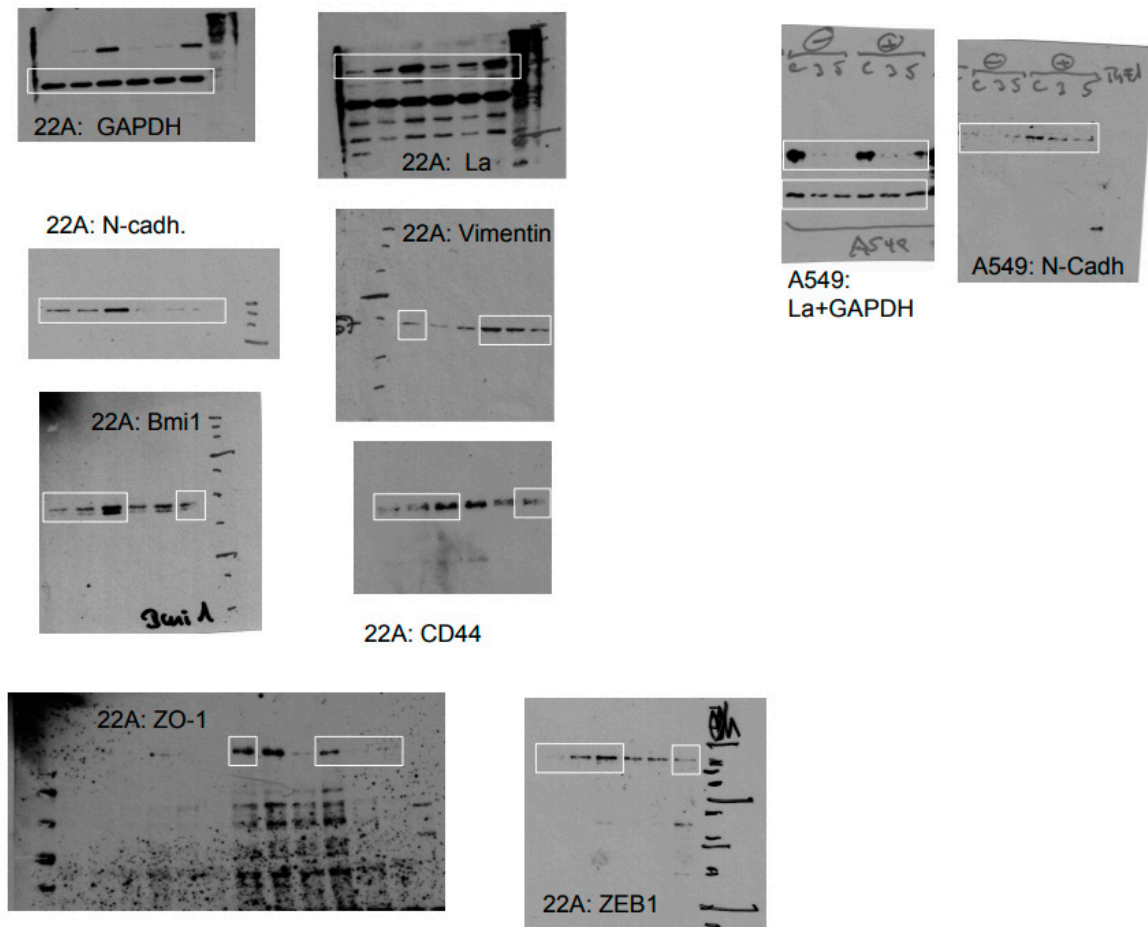


Figure S3. Supplemental Figure 4 and Figure 5.

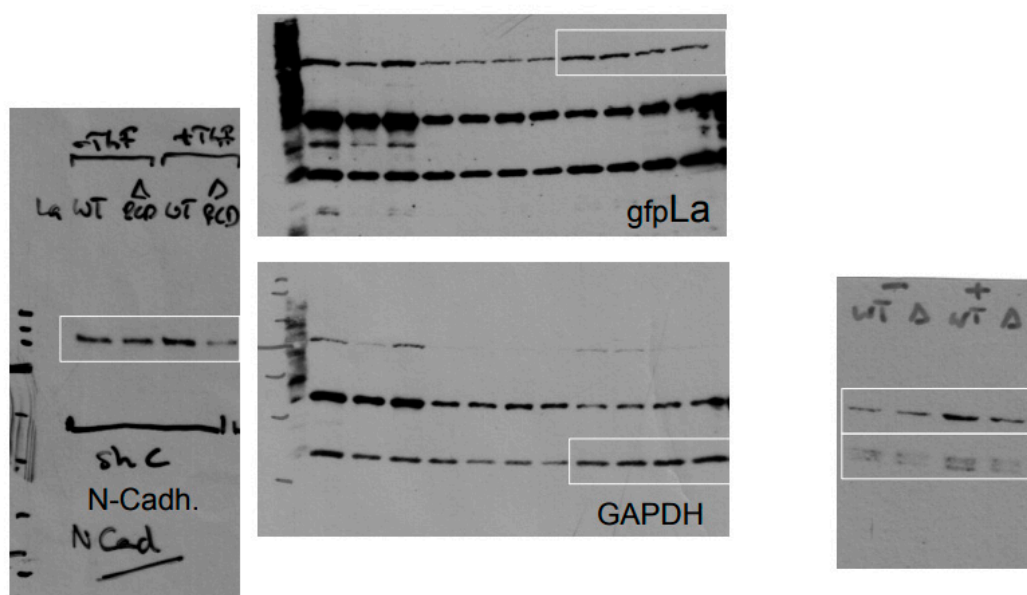


Figure S4. Supplemental Figure 6.

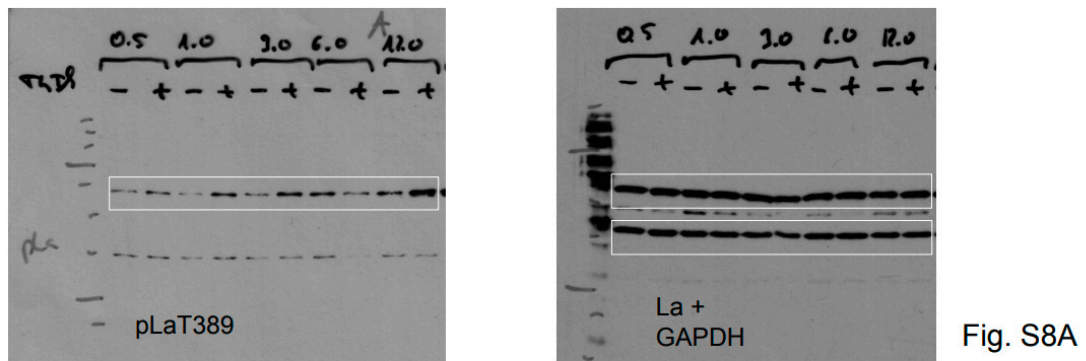


Fig. S8A

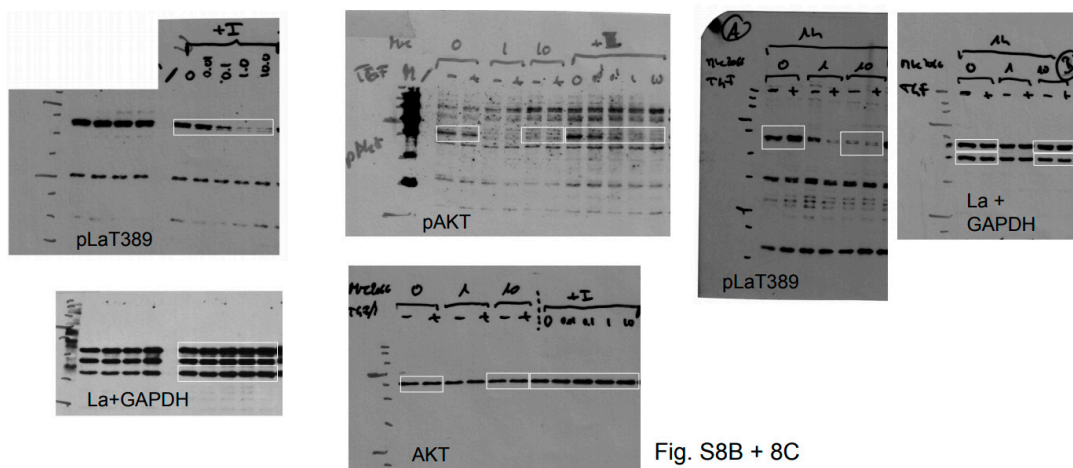


Fig. S8B + 8C

Figure S5. Supplemental Figure 8.

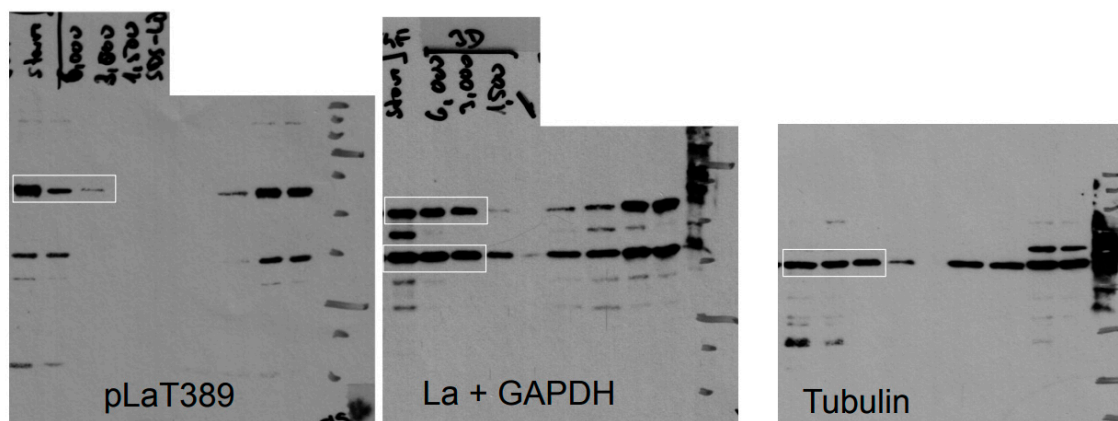


Figure S6. Supplemental Figure 9.