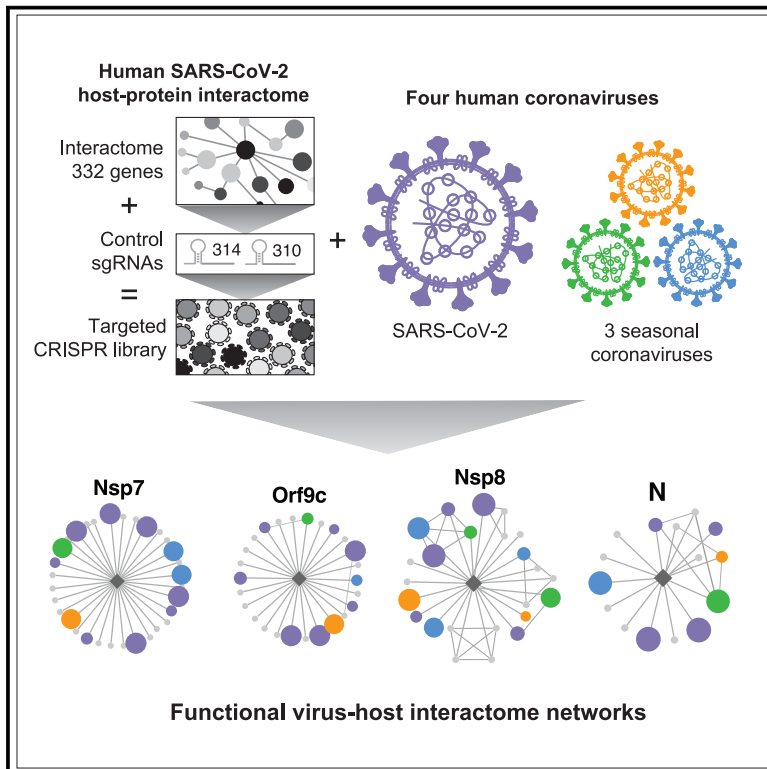


Cell Host & Microbe

Functional interrogation of a SARS-CoV-2 host protein interactome identifies unique and shared coronavirus host factors

Graphical Abstract



Authors

H.-Heinrich Hoffmann,
Francisco J. Sánchez-Rivera,
William M. Schneider, ...,
Margaret R. MacDonald,
John T. Poirier, Charles M. Rice

Correspondence

john.poirier@nyulangone.org (J.T.P.),
ricec@rockefeller.edu (C.M.R.)

In Brief

Building upon a published SARS-CoV-2 protein interactome, Hoffmann et al. use a custom CRISPR library to determine which of these interacting host proteins are essential for infection by SARS-CoV-2 virus as well as three seasonal coronaviruses. These factors represent potential targets to combat COVID-19 and perhaps future coronavirus outbreaks.

Highlights

- SARS-CoV-2 host protein interactome CRISPR screens for SARS-CoV-2 and three coronaviruses
- Parallel CRISPR screens uncover unique and shared coronavirus host factors
- Numbers of interacting host proteins and functional interactors are not proportional
- Identified SARS-CoV-2 host factors are expressed in relevant cells in the human airway



Resource

Functional interrogation of a SARS-CoV-2 host protein interactome identifies unique and shared coronavirus host factors

H.-Heinrich Hoffmann,^{1,8} Francisco J. Sánchez-Rivera,^{2,8} William M. Schneider,^{1,8} Joseph M. Luna,^{1,8} Yadira M. Soto-Feliciano,³ Alison W. Ashbrook,¹ Jérémie Le Pen,¹ Andrew A. Leal,⁴ Inna Ricardo-Lax,¹ Eleftherios Michailidis,¹ Yuan Hao,⁴ Ansgar F. Stenzel,^{1,5} Avery Peace,¹ Johannes Zuber,^{6,7} C. David Allis,³ Scott W. Lowe,² Margaret R. MacDonald,¹ John T. Poirier,^{4,8,*} and Charles M. Rice^{1,9,*}

¹Laboratory of Virology and Infectious Disease, The Rockefeller University, New York, NY 10065, USA

²Cancer Biology and Genetics, MSKCC New York, NY 10065, USA

³Laboratory of Chromatin Biology & Epigenetics, The Rockefeller University, New York, NY 10065, USA

⁴Laura and Isaac Perlmutter Cancer Center, New York University Grossman School of Medicine, NYU Langone Health, New York, NY 10016 USA

⁵Department of Infectious Diseases, Molecular Virology, Heidelberg University, Heidelberg, Germany

⁶Research Institute of Molecular Pathology (IMP), Vienna BioCenter (VBC), Vienna, Austria

⁷Medical University of Vienna, Vienna BioCenter (VBC), Vienna, Austria

⁸These authors contributed equally to this work

⁹Lead Contact

*Correspondence: john.poirier@nyulangone.org (J.T.P.), ricec@rockefeller.edu (C.M.R.)

<https://doi.org/10.1016/j.chom.2020.12.009>

SUMMARY

The ongoing severe acute respiratory syndrome coronavirus 2 (SARS-CoV-2) pandemic has devastated the global economy and claimed more than 1.7 million lives, presenting an urgent global health crisis. To identify host factors required for infection by SARS-CoV-2 and seasonal coronaviruses, we designed a focused high-coverage CRISPR-Cas9 library targeting 332 members of a recently published SARS-CoV-2 protein interactome. We leveraged the compact nature of this library to systematically screen SARS-CoV-2 at two physiologically relevant temperatures along with three related coronaviruses (human coronavirus 229E [HCoV-229E], HCoV-NL63, and HCoV-OC43), allowing us to probe this interactome at a much higher resolution than genome-scale studies. This approach yielded several insights, including potential virus-specific differences in Rab GTPase requirements and glycosylphosphatidylinositol (GPI) anchor biosynthesis, as well as identification of multiple pan-coronavirus factors involved in cholesterol homeostasis. This coronavirus essentiality catalog could inform ongoing drug development efforts aimed at intercepting and treating coronavirus disease 2019 (COVID-19) and help prepare for future coronavirus outbreaks.

INTRODUCTION

The ongoing coronavirus disease 2019 (COVID-19) pandemic has claimed the lives of more than 1.7 million people worldwide and remains uncontrolled in many countries, presenting an urgent global health crisis. Coronaviruses are positive-sense RNA viruses that infect a variety of vertebrate hosts. Seasonal coronaviruses endemic in humans cause mild, common-cold-like symptoms. In recent years, however, novel coronavirus strains circulating in animal reservoirs have spilled over into the human population, causing severe disease. Three notable coronavirus outbreaks in the 21st century include severe acute respiratory syndrome coronavirus (SARS-CoV) in 2003, Middle East respiratory syndrome coronavirus (MERS-CoV) in 2012, and SARS-CoV-2 in late 2019. Although the spread of SARS-CoV and MERS-CoV was limited, SARS-CoV-2, the etiological agent

of COVID-19, remains widespread. With three known spillover events in recent history, this virus family has proven its potential to cross species, spread rapidly, and take numerous lives.

The urgency of the ongoing SARS-CoV-2 pandemic has advanced coronavirus research at unprecedented speed. Several groups performed genome-wide CRISPR-Cas9 screens to identify host factors required by SARS-CoV-2 (Baggen et al., 2020; Daniloski et al., 2020; Heaton et al., 2020; Schneider et al., 2020; Wang et al., 2020; Wei et al., 2020; Zhu et al., 2020) with the hope that these screens would not only uncover the biology underlying this virus, but also identify druggable host factors that could be targeted to prevent virus spread or lessen disease. Other groups conducted drug repurposing screens using compound libraries enriched with FDA-approved or clinical-phase drug candidates to identify off-the-shelf interventions (Dittmar et al., 2020; Zhou et al., 2020). A complementary



strategy to these screens is to nominate candidate host factors that are predicted to interact with viral proteins through immunoprecipitation mass spectrometry (IP-MS) of affinity-tagged viral proteins. Indeed, one of the earliest discovery-based SARS-CoV-2 reports to appear in press was a study that aimed to map the SARS-CoV-2 host protein interactome using this technique (Gordon et al., 2020b). This dataset highlighted potential targets to explore for drug repurposing based on the hypothesis that host proteins that directly or indirectly bind SARS-CoV-2 proteins are more likely to be required to support infection or spread in relation to the rest of the proteome. Other protein interactome studies in different contexts and with varying degrees of overlap between datasets soon followed (e.g., Stukalov et al., 2020). Although there is a pressing need to better understand SARS-CoV-2 biology and identify potential therapeutic targets, it is also critical to obtain and interpret this knowledge in the broader context of coronavirus biology to prepare for potential future outbreaks. We therefore aimed to use CRISPR-Cas9 technology to interrogate SARS-CoV-2 host factor requirements in a broader context that included additional members of the coronavirus family.

CRISPR-Cas9 forward genetics and data from IP-MS studies can be combined in a high-coverage hypothesis-driven single guide RNA (sgRNA) screening campaign (Kelly et al., 2020). Focused libraries offer several advantages: (1) increased coverage (smaller libraries allow interrogation of many sgRNAs per gene, thereby lowering the rate of false negatives), (2) increased resolution (smaller libraries ensure higher screen representation at every point of the screen), and (3) a wider range of screening conditions (smaller libraries are more compatible with highly parallel testing of multiple technical and biological conditions) (DeWeirdt et al., 2020; Doench, 2018; Parnas et al., 2015).

In this study, we leveraged the power of high-resolution pooled CRISPR-Cas9 screens by generating and screening a focused sgRNA library targeting 332 host proteins identified by Gordon et al. (2020b) as high-confidence SARS-CoV-2 protein interactors. This focused approach allowed us to interrogate 10 sgRNAs per gene, thereby achieving near-saturating coverage of candidate targets. Furthermore, the reduced library complexity allowed us to systematically expand our screening efforts across a panel of four related human coronaviruses representing both alpha- (HCoV-229E and HCoV-NL63) and beta-coronaviruses (HCoV-OC43 and SARS-CoV-2). We conducted these screens at 33°C and 37°C, consistent with the native environment of the upper and lower airway, respectively. This systematic approach allowed us to uncover host proteins that are required for infection by all four tested human coronaviruses. Several of these host factors might serve as suitable targets for developing pan-coronavirus therapeutics. Furthermore, we uncovered previously unappreciated differences in host factor requirements among human coronaviruses, which could be leveraged for designing strain-specific therapeutic strategies. Overall, our study highlights the power of high-coverage CRISPR-Cas9 screens for systematic identification of host factors required for coronavirus infection and serves as a resource for efforts aimed at developing strategies to treat COVID-19, seasonal coronavirus infections, and perhaps future pandemic strains.

RESULTS

A focused CRISPR-Cas9 screen functionally validates host protein members of a SARS-CoV-2 host protein interactome

In a recent study, 26 of the 29 known SARS-CoV-2 proteins were individually expressed in HEK293T cells and immunoprecipitated to identify interacting host proteins (Gordon et al., 2020b). After stringent filtering, 332 high-confidence host protein interactors were nominated. Here, we designed a custom-made sgRNA library and performed a series of CRISPR-Cas9 forward genetic screens to determine which of these 332 host proteins might be required for SARS-CoV-2 infection and virus-induced cytopathogenicity.

We constructed a lentiviral transfer plasmid library encoding 3,944 sgRNAs designed to disrupt all 332 human genes identified in the abovementioned SARS-CoV-2 interactome (Figure 1A). The library includes 10 sgRNAs targeting each gene, 314 safe-targeting sgRNAs (which cut the genome at non-genic regions [Morgens et al., 2017]), and 310 sgRNAs targeting genes essential for cell survival or proliferation (Hart et al., 2017; Michlits et al., 2020). We used this library to perform a pooled CRISPR-Cas9 gene disruption screen in Huh-7.5 hepatoma cells stably expressing Cas9 (Huh-7.5-Cas9) (Figure 1B). Huh-7.5 cells were chosen because they express the SARS-CoV-2 cellular receptor, angiotensin-converting enzyme 2 (ACE2), as well as transmembrane serine protease 2 (TMPRSS2), which is involved in SARS-CoV-2 entry (Figure S1A) (Hoffmann et al., 2020). Importantly, we did not include ACE2 in the library because we hypothesized that it would dominate the SARS-CoV-2 and HCoV-NL63 screens and reduce our capacity to probe host factors with critical but potentially more subtle roles in SARS-CoV-2 infection. These cells express 329 out of 332 (99%) of the host proteins in the SARS-CoV-2 interactome at amounts similar to highly susceptible Calu-3 cells (Figure S1A) (Wyler et al., 2020). Importantly, we confirmed that Huh-7.5 cells were readily infected and displayed virus-induced cytopathic effect (CPE) by multiple coronaviruses, including SARS-CoV-2, thereby validating these cells as a robust system for studying members of the *Coronaviridae* family (Figure S1B).

Next, we performed a series of genetic screens by transducing Huh-7.5-Cas9 cells in triplicate with the SARS-CoV-2 interactome sgRNA library followed by puromycin selection and expansion for 1 week prior to SARS-CoV-2 challenge. To identify potential temperature-dependent differences in host factor requirements, SARS-CoV-2 selection screens were performed at two temperatures, 33°C and 37°C, to mimic the temperatures of the upper and lower airway, respectively (V'kovski et al., 2020). Library-transduced cells that survived SARS-CoV-2 infection were harvested after 7 (33°C) and 11 (37°C) days, followed by genomic DNA isolation and screen deconvolution via next-generation sequencing. In this context, cells transduced with sgRNAs targeting host factors required for viral infection or virus-induced CPE should survive and enrich within the infected population, whereas cells expressing safe-targeting sgRNAs or sgRNAs targeting genes inconsequential to virus infection are expected to die and deplete over time. Similarly, cells transduced with sgRNAs targeting genes essential for cell survival should deplete independently of SARS-CoV-2 infection.

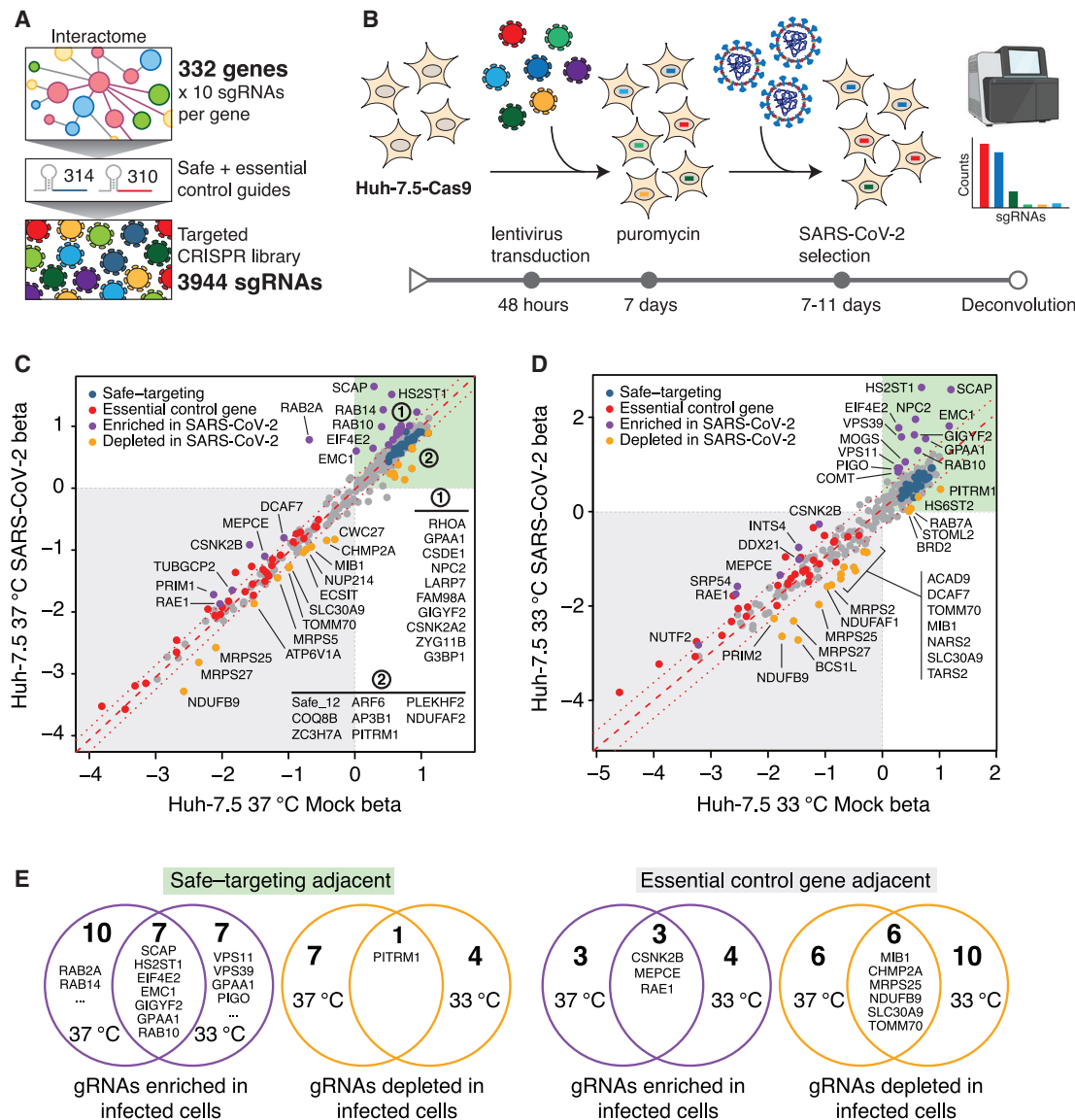


Figure 1. A SARS-CoV-2 protein interactome CRISPR screen identifies functional SARS-CoV-2 protein interactors

(A) An sgRNA library targeting 332 interactome genes along with 314 safe and 310 essential control sgRNAs was used to create a targeted lentiviral library. (B) CRISPR screening workflow. Cas9-expressing cells are transduced with lentivirus encoding the sgRNA library and subsequently selected with SARS-CoV-2. Surviving cells along with mock controls are subject to sgRNA sequencing. (C) Scatterplot of gene essentiality scores for a SARS-CoV-2 interactome screen performed in Huh-7.5 cells cultured at 37°C. (D) Scatterplot of a SARS-CoV-2 interactome screen performed in Huh-7.5 cells at 33°C. (E) Venn diagrams depicting overlap for enriched or depleted sgRNAs at 37°C and 33°C. Genes with beta scores similar to safe-targeting sgRNAs (left) or essential genes (right) are indicated. See also Figure S1.

The overall technical performance of these genetic screens was excellent (Figures S1C–S1F). We confirmed that 3,921 out of 3,944 (99.4%) of sgRNAs were recovered from the plasmid library and that all screen libraries were sequenced to saturation (Figure S1C). Correlation analyses demonstrated that biological replicates for each condition clustered together and shared a high correlation coefficient (≥ 0.97), as expected (Figure S1D). Receiver operating characteristic (ROC) curves, which measure the technical performance of genetic screens based on the de-

gree to which the screen can distinguish between negative control (safe-targeting) and positive control (essential gene-targeting) sgRNAs, were excellent (Figures S1E and S1F). Of note, incorporating safe-targeting and essential gene-targeting sgRNAs allows for better internal calibration and effect size estimation of CRISPR-based genetic screens. Specifically, we used these built-in controls to establish a gene essentiality (beta) score (Li et al., 2015), which allowed us to first stratify interactome targets based on their effects on cellular fitness under

“mock” (uninfected) conditions followed by identifying high-confidence gene “hits” in infected cells. Genes with beta scores similar to essential genes (which influence cell survival with or without infection) might be confounded by effects on cellular fitness, whereas genes with beta scores similar to safe-targeting sgRNAs (which only influence survival during viral infection) are more likely to be true positives. Using these parameters, we identified 42 and 43 genes that significantly influenced SARS-CoV-2-induced cell death at 33°C and 37°C, respectively (Figures 1C and 1D; Tables S1C and S1E). Of these, 21 (33°C) and 23 (37°C) genes scored as potential host factors that promote SARS-CoV-2-induced cell death (purple points in Figures 1C and 1D), whereas 21 (33°C) and 20 (37°C) genes scored as putative antagonists of the virus life cycle (orange points in Figures 1C and 1D). In contrast, safe-targeting and essential gene-targeting sgRNAs behaved similarly across mock and SARS-CoV-2 conditions (blue and red points in Figures 1C and 1D, respectively). These results suggest that the SARS-CoV-2 host protein interactome is enriched in functionally relevant factors that play critical roles during the life cycle of this virus.

As shown in Figures 1C and 1D, we noted significant enrichment in sgRNAs targeting sterol regulatory-element-binding protein (SREBP) cleavage-activating protein (SCAP), heparan sulfate 2-O-sulfotransferase 1 (HS2ST1), eukaryotic translation initiation factor 4E type 2 (EIF4E2), the Rab family of small GTPases (e.g., RAB2A, RAB10, and RAB14), members of the homotypic fusion and vacuole protein sorting (HOPS) tethering complex (e.g., VPS39 and VPS11), and ER membrane protein complex subunit 1 (EMC1). Additional significantly enriched genes are highlighted in purple in Figures 1C and 1D. These results indicate that these SARS-CoV-2 protein interactors are essential for virus infection or virus-induced cell death. In contrast, we observed negative enrichment in mammalian mitochondrial ribosomal small subunit (MRPS) genes (e.g., MRPS2, MRPS5, MRPS25, and MRPS27), suggesting that loss of these genes sensitize cells to direct or indirect virus-induced cell death. Additional significantly depleted genes are highlighted in orange in Figures 1C and 1D.

We also observed hits that were common to screens performed at either 33°C or 37°C (Figure 1E), as well as hits that were specific to one of the two temperatures. An intriguing outcome was the apparent differential requirement for two Rab GTPases, RAB2A and RAB14, which appeared to be essential for SARS-CoV-2 infection and virus-induced CPE at 37°C but not at 33°C. In contrast, members of the HOPS complex (VPS11 and VPS39) and proteins involved in glycosylphosphatidylinositol (GPI) anchor biosynthesis (phosphatidylinositol glycan anchor biosynthesis class O [PIGO] and GPAA1) appeared to be required at 33°C but not at 37°C (Figure 1E). These findings might reflect differences in the SARS-CoV-2 entry pathway or life cycle progression at 33°C and 37°C. Lastly, we found that positively selected hits were typically enriched in the region of safe-targeting sgRNAs, whereas negatively selected hits tended to be enriched in the region of control genes with deleterious effects (Figure 1E). In conclusion, our SARS-CoV-2 interactome screen identified a compendium of host genes that can be disrupted without affecting cell viability in the absence of infection yet seem to play essential roles during SARS-CoV-2-induced CPE (Figures 1C–1E). Such genes could

represent excellent candidates for the development of anti-SARS-CoV-2 therapeutics.

Multiple coronaviruses require both obligate and likely dispensable SARS-CoV-2 host factors for infection

Viruses within the same family can have both shared and specific host factor requirements. Functionally distinguishing these requirements is critical to gain a complete understanding of virus-host biology and, on a practical level, can help identify targets for pan-viral therapies. Toward these goals, we expanded our SARS-CoV-2 interactome CRISPR-Cas9 screening campaign by performing complementary screens using three additional human coronaviruses: HCoV-229E, HCoV-NL63, and HCoV-OC43. To visualize the degree of enrichment in genes that scored in the SARS-CoV-2 screens described above, we plotted the cumulative distribution of absolute Z scores for all five screens (Figure 2A). Each of these screens was significantly enriched in the subset of genes that scored in the initial SARS-CoV-2 screens as compared with those of the complete library. These screens also identified Rab GTPases, components of the HOPS complex, endoplasmic reticulum membrane protein complex 1 (EMC1), and GPI anchor biosynthesis as host factors required for coronavirus infection and virus-induced CPE (Figures 2B–2E). Of note, HCoV-OC43, for which there is currently no protein receptor described and entry has been associated with binding to 9-O-acetylated sialic acids (Hulswit et al., 2019), displayed a strong requirement for GPI anchor biosynthesis, as evidenced by the fact that GPAA1, PIGO, and phosphatidylinositol glycan anchor biosynthesis class S (PIGS) scored as significant hits in the screen (Figures 2D and S4A).

In addition to sgRNAs that enrich in virus-infected cell populations (suggesting the genes targeted by these sgRNAs support virus infection), we also identified sgRNAs that were depleted in virus-infected cultures (suggesting the genes targeted by these sgRNAs could have an antiviral function). For example, Mindbomb 1 (MIB1), an E3 ubiquitin-protein ligase, was specifically depleted in the context of infection with all four viruses. Although MIB1 disruption was deleterious in both mock-infected and virus-infected cells, MIB1 disruption was consistently more toxic in the context of virus infection. MIB1 is known to play a role in “Lys-63”-linked polyubiquitination of TANK-binding kinase 1 (TBK1) kinase, which is thought to mediate its activation (Li et al., 2011). Consistent with a potential role in this pathway, sgRNAs targeting TBK1 were negatively enriched in HCoV-229E and HCoV-OC43 screens (Figures 2C and 2D). This might suggest a role for MIB1 and TBK1, a signal integrator of multiple RIG-like receptors (RLRs) and positive regulator of interferon regulatory transcription factor 3 (IRF3), in establishing an antiviral state that controls coronavirus infection. This could explain why, in the absence of MIB1 and TBK1, cells are more susceptible to virus-induced CPE.

Next, we credentialed our platform by performing targeted validation of a subset of high-confidence SARS-CoV-2 functional interactors identified in our screens (Figure 3A). As shown in Figures 3B and S2, small interfering (siRNA) knockdown of multiple candidates from our SARS-CoV-2 host interactome screens significantly impaired viral infection in Huh-7.5 cells, demonstrating the robustness of our screening results. Importantly, these experiments were performed by using an

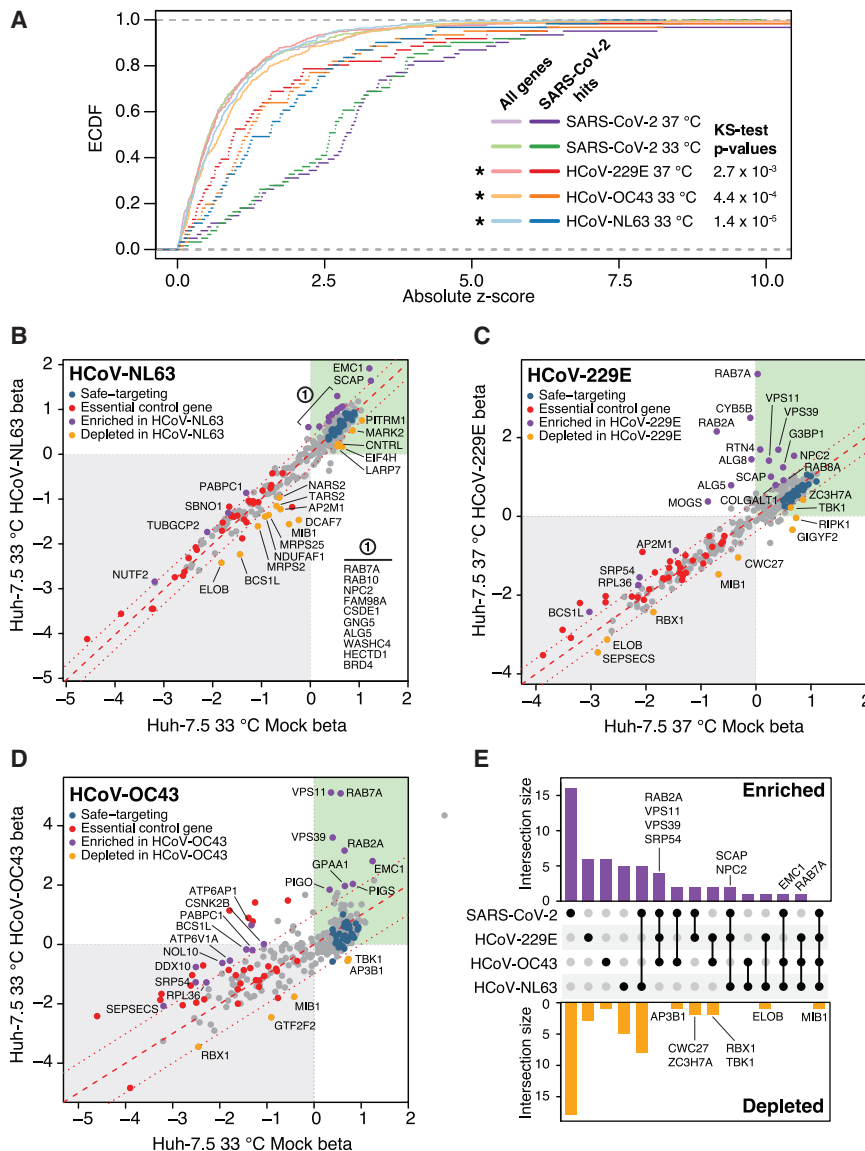


Figure 2. Functional interrogation of a SARS-CoV-2 protein interactome with additional coronaviruses identifies pan-coronavirus and coronavirus-specific host factors

(A) Empirical cumulative distribution function (ecdf) plot of absolute Z scores for SARS-CoV-2 hits across screens for the four coronaviruses as indicated (dark color) compared with those of all tested genes (All genes, light color). Statistical significance of enrichment determined by two-sided Kolmogorov-Smirnov (K-S) test.

(B–D) Scatterplot of gene essentiality scores for a SARS-CoV-2 protein interactome screened in Huh-7.5 cells with (B) HCoV-NL63 at 33°C, (C) HCoV-229E at 37°C, and (D) HCoV-OC43 at 33°C. (E) UpSet plot showcasing hits overlapping in screens across all four viruses. SARS-CoV-2 hits are inclusive of both temperatures, 33°C and 37°C. Select genes for enriched or depleted sgRNAs are indicated. See also Figure S1.

Given that A549 cells do not natively support SARS-CoV-2 infection, we engineered these cells to overexpress the ACE2 and TMPRSS2 viral entry host factors. Notably, siRNA knockdown of multiple SARS-CoV-2 host interactome targets also significantly blunted infection of A549^{ACE2/TMPRSS2} cells by SARS-CoV-2, further supporting the validity and generalizability of our SARS-CoV-2 essentiality catalog (Figures 3C and 3D).

Functional interactors are not proportionally distributed between bait proteins

We next asked how the functional hits we identified related to the viral bait proteins with which they interact. To visualize functional and network relationships, we overlaid our CRISPR screening results

orthogonal assay for readout, namely the detection by immunostaining of viral antigens (N protein in the case of SARS-CoV-2) or double-stranded RNA (dsRNA) generated as a viral replication intermediate (in the case of HCoV-229E, HCoV-NL63, and HCoV-OC43), each of which measures percent infection rather than CPE (Figure S3). These data suggest that a subset of these genes are required for viral replication and/or spread, even though our screens were performed with CPE as the readout, and they further validate our CRISPR screening platform for discovery of host factors involved in viral replication. Furthermore, it should also be noted that siRNA knockdown is often partial and variable; nevertheless, these validation data confirm the importance of a subset of these host factors for coronavirus biology. In addition, failure to validate in this short-term single-time-point knockdown assay does not necessarily rule out the importance of a given host factor.

To rule out cell-type-specific effects, we expanded our validation efforts to the A549 human lung adenocarcinoma cell line.

from all viral screens in this study onto a bait-centric interactome map (Figure 4A). The distribution of functional hits across different bait proteins was apparently non-random; instead, we observed that certain bait proteins appeared to be enriched in functional hits.

We subsequently explored whether the number of host protein interactions for a given bait protein was predictive of the percentage of functional interactors (Figure 4B). There was no evident correlation between the number of predicted host protein binding partners of a given viral protein and the number of functional interactors. To examine this more rigorously, we tested each bait protein for enrichment in functional hits by using the hypergeometric test and found that bait proteins, such as Orf9c, are significantly enriched in functional interactors (Figure 4B) ($p = 0.01$). Indeed, we found that some viral baits that interact with many host proteins (e.g., Orf8 and Nsp13) have relatively few functional interactors, whereas others (e.g., Nsp7, Nsp8, and Orf9c) have many. Overall, 87 out of

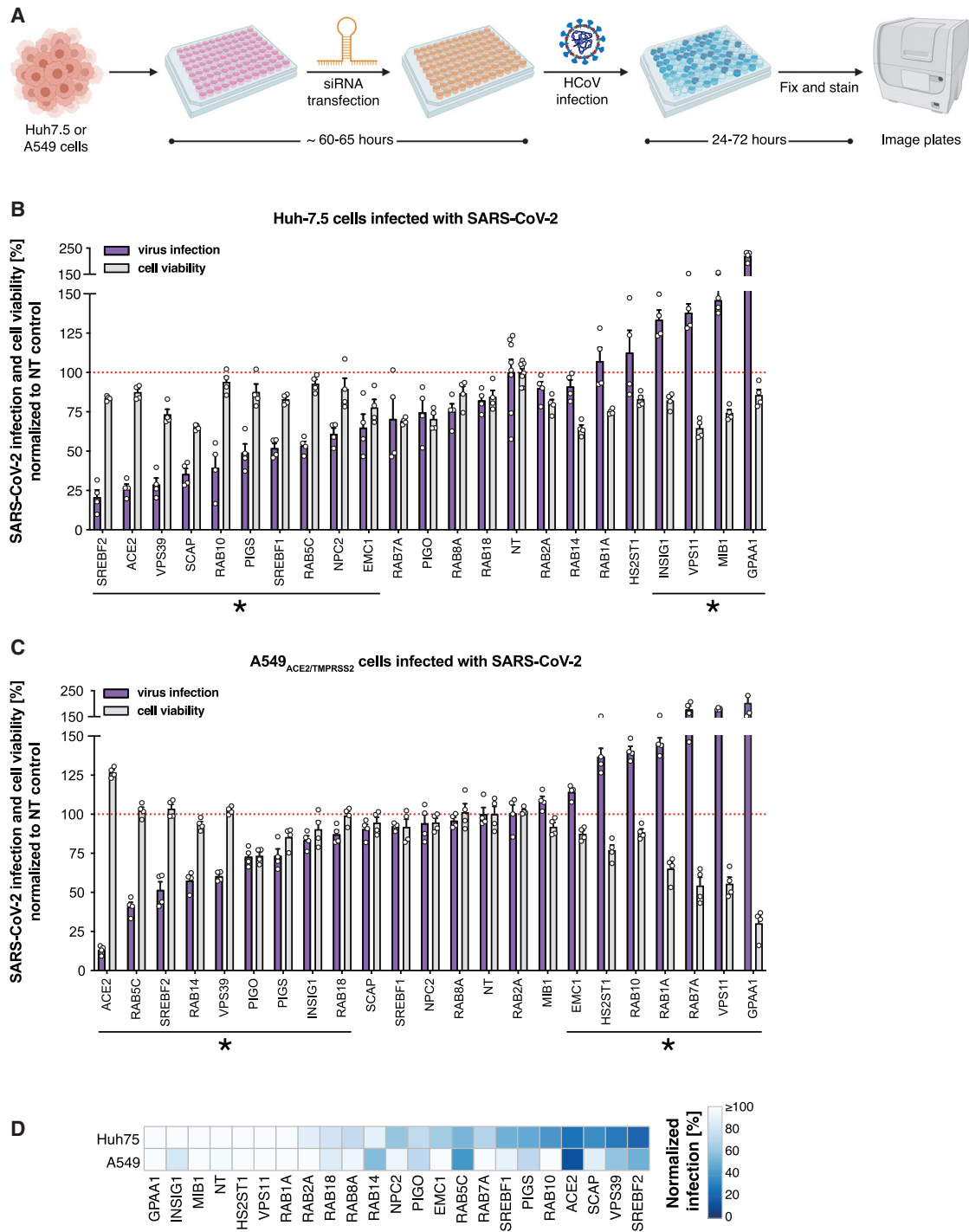


Figure 3. Validation of high-confidence SARS-CoV-2 protein interactome factors during infection by SARS-CoV-2

(A) Experimental scheme for candidate validation by using arrayed siRNA knockdown. Diagram created with [BioRender.com](#).

(B) Candidate validation in Huh-7.5 cells at 37°C using 5,000 SARS-CoV-2 plaque-forming units (PFU) per well. Plates were quantified at 24 h after infection. Data represent the average ± SEM of n = 4 replicates per target gene. Significance for viral infection percentage values was evaluated by using Student's t test (2-tailed, unpaired) as compared with those of non-targeting (NT) controls (set at 100%). * p < 0.05.

(C) Candidate validation in A549_{ACE2/TMPRSS2} cells at 37°C using 2,500 SARS-CoV-2 PFU per well. Plates were quantified at 24 h after infection. Data represent the average ± SEM of n = 4 replicates per target gene. Significance for viral infection percentage values was evaluated by using Student's t test (2-tailed, unpaired) as compared with those of non-targeting (NT) controls (set at 100%). * p < 0.05.

(D) Heatmap representation of data from (B) and (C).

See also [Figures S2](#) and [S3](#).

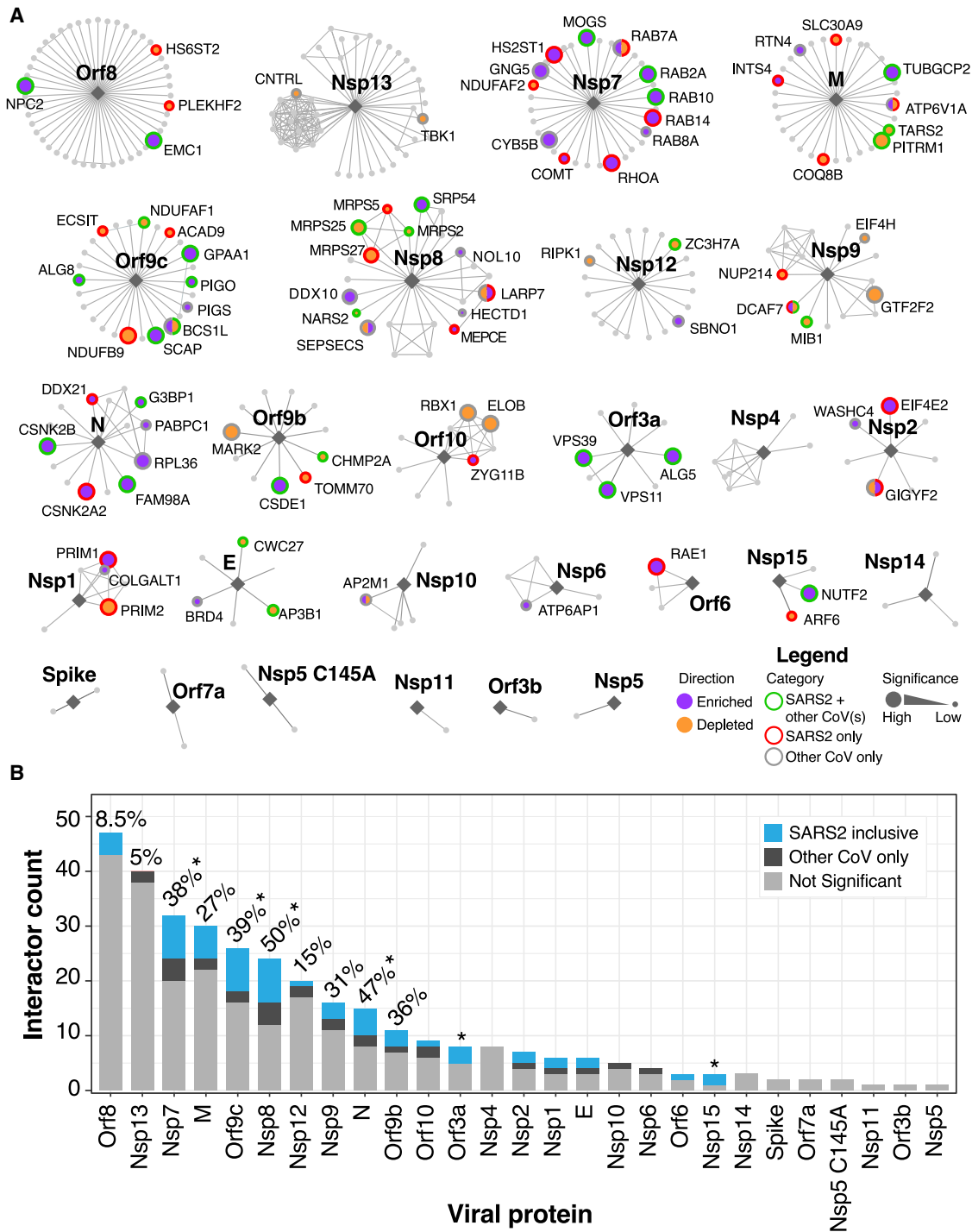


Figure 4. Network overlay of interactome CRISPR screening

(A) Interactome network organized by virus bait protein from largest to smallest number of putative interactors. Enriched or depleted hits are highlighted in labeled purple or orange filled circles, respectively. Border colors denote SARS-CoV-2 hits that are shared with any other coronavirus screen (green), hits exclusive to SARS-CoV2 (red), or hits exclusive to other HCoV(s) (gray) with size of node scaled with significance.

(B) Barplot of nodes per viral protein with all SARS-CoV-2 shared and exclusive hits indicated in blue. Hits for other CoVs are shown in dark gray. Percentage of genes that scored as a hit in any screen are indicated for all genes with greater than 10 edges. *p < 0.05 based on hypergeometric test

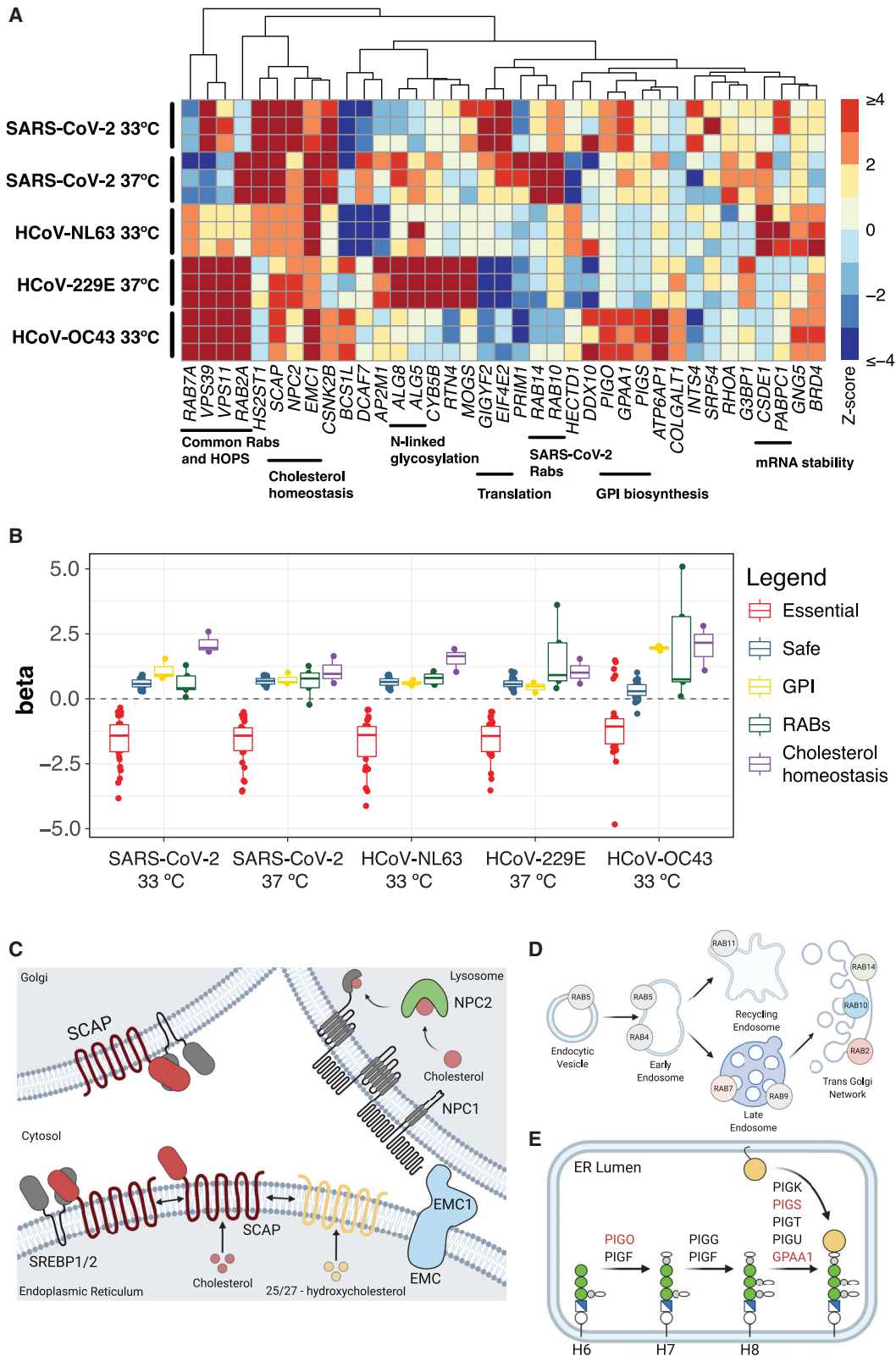


Figure 5. Pathway focused views of high confidence CRISPR hits

(A) Heatmap of Z scores for the union of positively enriched coronavirus host factors across experimental replicates in all infection conditions. Functionally related genes are highlighted.

(legend continued on next page)

332 (26%) of the putative SARS-CoV-2 interactome seems to be required for SARS-CoV-2 infection. We were surprised, however, to find that there are SARS-CoV-2 protein interactors that are essential for one or more of the other coronaviruses but apparently *not* essential for SARS-CoV-2 (e.g., DDX10, RPL36, GNG5, and CYB5B) (Figures 2E and 4A). Altogether, these data suggest that although host:pathogen interactomes are enriched in functionally required host proteins, the relationship between physical association and functional requirement is not strictly concordant.

DISCUSSION

Host:pathogen protein:protein interaction (PPI) networks derived from IP-MS data have proven valuable for illustrating the complex nexus between viral and cellular proteins (Gordon et al., 2020b; Sadegh et al., 2020; Stukalov et al., 2020). PPI networks can predict hundreds of potential interactions; however, secondary validation of each interaction is often a labor-intensive process. Moreover, it is not possible to assign functional significance to any particular bona fide interaction based on co-purification or co-immunoprecipitation alone in part because of possible artifacts caused by overexpression outside of the viral context. Functional experiments are therefore needed to assess the biological significance of each host protein node in the network.

We probed a SARS-CoV-2 PPI network consisting of 332 high-confidence host factors by systematically screening multiple coronaviruses by using a high-density, pooled sgRNA library. First, we interrogated the functional role of each predicted member of the network in the presence or absence of SARS-CoV-2 infection, which allowed us to identify host factors that appear to be dispensable for Huh-7.5 proliferation but play a functional role in SARS-CoV-2 infection. Of the predicted interactome, we were able to assign a putative functional role for 87 out of 332 (26%) unique genes. This finding is in contrast to a number of recent studies that performed genome-scale CRISPR-Cas9 screens in VeroE6, Huh-7, Huh-7.5.1, Huh-7.5, and ACE2-overexpressing A549 cells, which failed to identify significant enrichment of the same PPI network (Baggen et al., 2020; Daniloski et al., 2020; Heaton et al., 2020; Schneider et al., 2020; Wang et al., 2020; Wei et al., 2020; Zhu et al., 2020). We speculate that this difference might be due in part to well-established advantages of focused screens, including (1) improved signal-to-noise ratios in the absence of sgRNAs targeting genes that are likely to dominate the screen (e.g., the SARS-CoV-2 cellular receptor, ACE2), (2) increased coverage by including more sgRNAs per gene (ten versus four), (3) feasibility of exploring multiple screening conditions (e.g., different viruses and temperatures), and (4) higher screen representation (i.e., >1,500-fold versus < 750-fold), as well as the lower propensity of Huh-7.5 cells to undergo syncytia formation in relation to ACE2-overexpressing A549 cells, which

potentially confounds pooled screening results (DeWeirdt et al., 2020; Doench, 2018; Parnas et al., 2015; Schneider et al., 2020). Thus, deeply probing individual interactome proteins by using a focused sgRNA library coupled with functional read-outs across multiple conditions allowed us to identify many host factors required for SARS-CoV-2 infection that were missed in genome-scale CRISPR screens. Consistent with these possibilities, we note that a recent study identified a number of SARS-CoV-2 interactome host proteins as critical factors for SARS-CoV-2 infection by using focused siRNA knockdown (Gordon et al., 2020a).

Although host proteins associated with specific viral bait proteins (e.g., Nsp7, Nsp8, and Orf9c) appear to be enriched in functionally required host factors, we note that the greatest degree of co-essentiality was predominantly observed between functionally related host factors instead of between factors associated with the same viral bait protein (e.g., SCAP and NPC2, both of which are involved in cholesterol homeostasis but interact with Orf9c and Orf8, respectively). This emphasizes the complementary role played by IP-MS data and functional genomics in identifying viral proteins that serve as hubs for multiple host factors that might participate in diverse molecular processes.

In addition to the pandemic SARS-CoV-2 strain, we performed parallel screens for three seasonal human coronaviruses (HCoV-NL63, HCoV-229E, and HCoV-OC43), which allowed us to compare and contrast virus-specific host factor requirements and identify potential pan-coronavirus host factors. Many genes from the SARS-CoV-2 PPI network were essential across multiple coronaviruses tested (40 out of 332; 12%), suggesting functional conservation across host:coronavirus PPIs. Surprisingly, though, we found that some predicted SARS-CoV-2 interactors appeared *not* to play a role in SARS-CoV-2 infection but were essential for other coronaviruses (Figure 4A). This might be due to promiscuity in protein-protein interactions, evolutionary divergence in the functional requirement for a given host factor, redundant factors (e.g., SARS-CoV-2 might rely on redundant factors for specific viral life cycle steps whereas other coronaviruses might rely on a single factor), or the strict threshold—the ability to survive infection—that must be crossed to score as a hit in these screens. For example, it is possible that inactivation of specific host factors impairs SARS-CoV-2 infection to some extent, but the virus nevertheless kills the cell.

To illustrate the power and versatility of our screening approach, we discuss below specific examples of pan-coronavirus and strain-specific host factors uncovered in our studies. The rest of the screening data can be found in Table S1.

SCAP is a pan-coronavirus host factor

A central goal of this study was to use a predicted SARS-CoV-2 interactome to identify host factors that are required for virus infection or virus-induced CPE by multiple coronaviruses. We

(B) Distribution of gene essentiality (beta) scores for the pathways highlighted in (A).

(C) SCAP/SREBP pathway regulating cholesterol homeostasis. Diagram created with BioRender.com. Modified from Shimano and Sato (2017).

(D) Rab GTPases and intracellular vesicle trafficking. Diagram created with BioRender.com. Modified from Stenmark (2009).

(E) Biosynthesis of GPI-anchored proteins. Diagram created with BioRender.com. Modified from Maeda et al. (2017).

See also Figure S4.

identified and validated SCAP as a pan-coronavirus host factor required for all four of the coronaviruses tested in this study (Figures 3B, S2, and 5A–5C). SCAP regulates lipid and cholesterol homeostasis by sequestering sterol regulatory element-binding proteins (SREBPs) in the ER in the presence of sterols, thus preventing their transport to the Golgi apparatus in coat protein complex II (COPII)-coated vesicles. In the Golgi, SREBPs are normally activated by proteolytic cleavage and subsequently shuttled to the nucleus to regulate gene expression (Luo et al., 2020). It is possible that multiple coronaviruses hijack this transport pathway as part of their life cycle or that coronavirus infection is not compatible with cell membrane properties in a low cholesterol state. Interestingly, Niemann-Pick intracellular cholesterol transporter 2 (NPC2) and EMC1 were also enriched across multiple coronavirus screens (Figures 5A–5C) and validated in Huh-7.5 cells by using siRNA knockdown (Figures 3B and S2). NPC2 normally plays a role in trafficking cholesterol out of lysosomes (Infante et al., 2008), and disruption of NPC2 could decrease cholesterol availability, which would prevent sequestration of SREBPs by SCAP and thus, phenocopy SCAP loss of function. Consistent with this model, siRNA knockdown of SREBF2 (which encodes for SREBP2) impaired infection by all coronaviruses in Huh-7.5 cells (Figures 3B and S2). EMC1 has been implicated in the exit of simian virus 40 (SV40) from the ER (Bagchi et al., 2016), in the infection of many flaviviruses (Marceau et al., 2016; Savidis et al., 2016; Zhang et al., 2016), and as part of the EMC complex in cholesterol biosynthesis (Volkmar et al., 2019). SCAP and NPC2 have not been previously identified in other host: pathogen forward genetic screens; however, an upstream cholesterol transporter, NPC1, was identified as an essential host factor for Ebola virus (Carette et al., 2011). The SCAP: SREBP complex is further regulated by oxysterol sensors, including insulin-induced gene 2 (INSIG2), which sequesters SCAP: SREBP in the presence of oxysterols like 25-hydroxycholesterol (25OHC) (Radhakrishnan et al., 2007). It is intriguing to speculate that oxysterols or direct SCAP inhibitors, such as fatostatin (Kamisuki et al., 2009) or its derivatives, could have antiviral properties. Consistent with this possibility, one study showed that 27-hydroxycholesterol (27OHC) exerted SARS-CoV-2 antiviral activity in VeroE6 cells at 10 μ M, and that overall oxysterols were lower in patients with moderate and severe COVID-19 symptoms than in controls (Marcello et al., 2020). Another study showed that 25OHC had potent SARS-CoV-2 antiviral activity at similar concentrations (Zang et al., 2020). These findings are in strong agreement with work from multiple groups that has demonstrated that 25OHC is a potent inhibitor of many enveloped viruses (Liu et al., 2013). Importantly, these regulators of lipid and cholesterol homeostasis are all constitutively expressed in Huh-7.5 cells (Figure S1), as well as in cells and tissues known to be infected by SARS-CoV-2 (Figure S4). These results are also consistent with our accompanying work (Schneider et al., 2020) demonstrating that regulators of cholesterol homeostasis, including SCAP, SREBF2, membrane-bound transcription factor site 1 protease (MBTPS1), MBTPS2, and secretion associated ras related GTPase 1A (SAR1A) play critical roles during coronavirus infection and further suggest that targeting SCAP might be a potential pan-coronavirus therapeutic strategy.

Differential requirement of Rab GTPases among members of the *Coronaviridae* family

Another central goal of this study was to probe the SARS-CoV-2 interactome across multiple coronaviruses to identify host factors required for virus infection or virus-induced CPE by specific strains (e.g., SARS-CoV-2-specific factors that are dispensable or less essential for HCoV-NL63, HCoV-229E, and/or HCoV-OC43 infection). By comparing two temperatures and four coronaviruses in parallel, we uncovered remarkable heterogeneity in the requirement for different Rab GTPases, which varied by coronavirus and temperature (Figures 5A, 5B, and 5D). Specifically, we identified a Rab GTPase module consisting of RAB2A and RAB7A that appeared to be critical for infection and virus-induced CPE by HCoV-229E, HCoV-OC43, and HCoV-NL63, but that seemed to be partially dispensable for SARS-CoV-2 infection (Figures 5A, 3B–3D, and S2). In accordance with these results, we identified the RAB10 and RAB14 GTPases as critical SARS-CoV-2 host factors (Figures 3B–3D). This differential requirement is not due to differences in basal expression amounts of Rab GTPases, given that mRNAs for all five Rab proteins are uniformly expressed in Huh-7.5 cells, as well as in cells and tissues known to be infected by SARS-CoV-2 (Figures 5B and S4). These results suggest that different coronaviruses might hijack specific Rab GTPase modules in host cells to carry out their infectious cycle, raising the possibility that targeting these modules could have therapeutic benefits. Furthermore, given the central role that Rab GTPases play in orchestrating complex intracellular trafficking, the observation that different coronaviruses might differentially rely on specific Rab GTPases suggests that even coronaviruses that engage the same cellular receptor might differ in their entry pathways in a context-dependent manner. Moreover, the temperature-specific differences we observed among the same virus (SARS-CoV-2) raises the intriguing hypothesis that there might be differences in the infection process across the temperature gradient spanning the upper and lower airway. Recent studies have nominated additional SARS-CoV-2 entry factors, including kringle containing transmembrane protein 1 (KREMEN1) and asialoglycoprotein receptor 1 (ASGR1) (Gu et al., 2020). One potential explanation for the temperature-specific differences we observed in entry pathways could be differential use of entry factors at 33°C and 37°C. In addition to virus- and temperature-specific differences in the requirement of Rab GTPases, we found that disruption of GPI anchor biosynthesis was particularly effective at blunting infection by HCoV-OC43 (Figures 5A–5B and 5E), raising the tantalizing possibility that HCoV-OC43 engages one or more GPI-anchored host factors, potential receptors, or co-receptors, that facilitate entry upon binding to 9-O-acetylated sialic acids (Hulswit et al., 2019). Future studies that employ cell lines with full genetic knockout of GPI-anchored host factors will be critical to test this hypothesis.

This study leverages the power of CRISPR-Cas9 forward genetic screens to functionally probe a high-confidence SARS-CoV-2 host protein interactome across multiple coronaviruses and temperatures. In doing so, our study delineates the complex functional interplay between the interacting viral and host factors defined by Gordon et al. (Gordon et al., 2020b) and nominates a set of core biological programs that play critical roles during

infection by SARS-CoV-2 and other coronaviruses. We found that a significant fraction of putative interactors in the SARS-CoV-2 interactome are indeed required for viral infection and virus-induced CPE by the pandemic SARS-CoV-2 and other endemic coronaviruses (HCoV-NL63, HCoV-229E, and HCoV-OC43). Interestingly, we identified one class of host factors that appear to be critical for infection by all coronaviruses tested (e.g., regulators of cholesterol homeostasis) and other classes of factors that seem to be somewhat differentially required among coronaviruses (e.g., Rab GTPases). These findings fill an important knowledge gap between predicted and functional virus-host interactomes and might help to focus attention on the genes and pathways in the SARS-CoV-2 interactome that appear to have the greatest functional significance during early infection steps. More broadly, this study presents a generalizable approach to interrogate host:pathogen PPI networks with functional genomics. We predict that the compendium of host factors and pathways described in this work will provide novel insights into the infection mechanics of SARS-CoV-2 and seasonal coronaviruses while simultaneously nominating candidate targets for antiviral strategies.

LIMITATIONS OF THE STUDY

Although our study sheds light on how host proteins are co-opted during coronavirus infection, it is not without limitations. As with all pooled CRISPR gene disruption screens, we expect that functionally redundant genes might not score (Ewen-Campen et al., 2017). Additionally, the results of these genetic screens should not be interpreted to validate specific physical associations, given that it is a purely functional readout. Additional biochemical studies would be necessary to test each predicted interaction. Nevertheless, we identified robust pan-coronavirus and discrete strain-specific host factors that scored with up to 10 sgRNAs scoring per gene, validating the utility of this near-saturation CRISPR-based genetic screening approach. We acknowledge that Huh-7.5 cells, which were chosen on the basis of their unique capacity to natively support infection by multiple coronaviruses (without the need to overexpress viral entry factors) and also because they constitutively express 324 out of 332 of the SARS-CoV-2 interactome factors, are different than the HEK293T system used by Gordon et al. (2020b) to generate the PPI network probed in this study and are not airway cells. However, this robust and experimentally tractable system offers a unique advantage to directly compare hard-wired host factor requirements across multiple viruses in a cell-type- and tissue-type-agnostic manner, which can then be validated by using gold-standard primary cells or animal models. Nevertheless, we performed targeted validation of several high-confidence candidates by using arrayed siRNA knockdown in A549_{ACE2/TMPRSS2} human lung cells, supporting the validity and generalizability of our SARS-CoV-2 essentiality catalog. It should be noted that siRNA knockdown is often partial and variable, and that syncytia formation in A549_{ACE2/TMPRSS2} cells could further confound validation results. We also note that failure to validate in this short-term knockdown assay does not necessarily rule out the importance of a given host factor. Future studies will be needed to dissect the specific requirement for each member of the PPI network validated in this study using additional models of coronavirus infection. Another potential

limitation of our study is that the screening strategy is not optimal for assessing the functionality of host factors beyond their role in modulating cell survival. In other words, our current experimental set up does not allow us to determine whether factors are only necessary for cell killing because of infection or whether they also influence viral replication and/or spread. Future studies should leverage orthogonal quantitative assays based on reporter viral constructs (e.g., encoding luciferase), viral replicons, or standard plaque assays. Furthermore, our approach cannot identify genes that play important roles in immune modulation and pathogenesis. Lastly, our genetic screens were not genome-wide and, consequently, should not be interpreted as a comprehensive catalog of potential coronavirus host factors. Future studies that employ focused CRISPR-Cas9 libraries targeting other pathways of interest and/or high coverage genome-wide libraries will undoubtedly extend this catalog of host factors hijacked by human coronaviruses.

STAR★METHODS

Detailed methods are provided in the online version of this paper and include the following:

- **KEY RESOURCES TABLE**
- **RESOURCE AVAILABILITY**
 - Lead contact
 - Materials availability
 - Data and code availability
- **EXPERIMENTAL MODEL AND SUBJECT DETAILS**
 - Cell culture
 - Production and titration of coronavirus stocks
- **METHOD DETAILS**
 - Plasmids and sgRNA cloning
 - Generation of A549_{ACE2/TMPRSS2} cells
 - Cloning of the Human SARS-CoV-2 host protein interactome CRISPR library
 - Lentivirus production
 - Lentiviral transduction of cell lines
 - CRISPR-Cas9 genetic screen
 - Arrayed validation of gene candidates using siRNA knockdown
- **QUANTIFICATION AND STATISTICAL ANALYSIS**
 - Analysis of CRISPR-Cas9 genetic screen data
 - Analysis of RNaseq and scRNaseq data

SUPPLEMENTAL INFORMATION

Supplemental information can be found online at <https://doi.org/10.1016/j.chom.2020.12.009>.

ACKNOWLEDGMENTS

This work was initiated and conducted under unusual circumstances. As New York City and much of the world was sheltering in place to reduce the spread of SARS-CoV-2, all of the authors here were sustained during the shutdown by generous funding intended for related and unrelated work. During this time, we were fortunate to obtain funding from government and charitable agencies that allowed this COVID-19 work to continue. For funding directly related to these COVID-19 efforts, we thank the G. Harold and Leila Y. Mathers Charitable Foundation and the BAWD Foundation for their generous awards. We also thank Fast Grants (www.fastgrants.org), a part of Emergent Ventures at

the Mercatus Center, George Mason University. Research reported in this publication was supported in part by the National Institute of Allergy and Infectious Diseases of the National Institutes of Health under award number R01AI091707. The content is solely the responsibility of the authors and does not necessarily represent the official views of the National Institutes of Health. We further received funding for COVID-19-related work from an administrative supplement to U19AI111825. As mentioned above, authors were also supported with non-COVID-19 funding by the following awards from the National Institutes of Health: P01CA196539, R01CA190261, R01CA204639, R01CA213448, U01CA213359, R01AI143295, R01AI150275, R01AI124690, R01AI116943, P01AI138938, P30CA008748, P30CA016087, R03AI141855, R21AI142010, and F32AI133910. An award from the Department of Defense: W81XWH1910409. Support was also provided by an EMBO Fellowship: ALTF 380-2018 and by generous funding from the Robertson Foundation, the Center for Basic and Translational Research on Disorders of the Digestive System through the generosity of the Leona M. and Harry B. Helmsley Charitable Trust, the Leukemia and Lymphoma Society (LLS-SCOR 7006-13), the Rockefeller University and St Jude Children's Research Hospital Collaborative on Chromatin Regulation in Pediatric Cancer (A11576), and an Agilent Technologies Thought Leader Award. S.W.L. is the Geoffrey Beene Chair of Cancer Biology and a Howard Hughes Medical Institute Investigator. Y.M.S.F. was supported by the Damon Runyon-Sohn Pediatric Cancer Fellowship (DRSG-21-17). F.J.S.-R. is a HHMI Hanna Gray Fellow and was partially supported by an MSKCC Translational Research Oncology Training Fellowship (NIH T32-CA160001). We also thank the NYU Langone Health Genome Technology Center. We also wish to thank Laura Whitman, David Weiss, Joseph Marino, and Leo Brizuela from Agilent Technologies for rapid high-fidelity oligo synthesis support during the peak of the COVID-19 pandemic; Rodrigo Romero (MSKCC) for assistance with Revolve fluorescence microscopy; and Aileen O'Connell, Santa Maria Pecoraro Di Vittorio, Glen Santiago, Mary Ellen Castillo, Arnella Webson, and Sonia Shirley for outstanding administrative or technical support.

AUTHOR CONTRIBUTIONS

Conceptualization: H.-H.H., F.J.S.-R., W.M.S., J.T.P., and C.M.R.; Methodology: H.-H.H., F.J.S.-R., W.M.S., Y.M.S.-F., J.M.L., A.L., J.Z., and J.T.P.; Formal analysis: J.M.L., Y.H., and J.T.P.; Investigation: H.-H.H., W.M.S., A.L., A.W.A., J.L.P., I.R.L., E.M., A.F.S., and J.T.P.; Resources: C.D.A., S.W.L., J.T.P., and C.M.R.; Data curation: J.M.L., J.L.P., and J.T.P.; Supervision: J.T.P. and C.M.R.; Visualization: F.S.-R., J.M.L., and J.T.P.; Writing – original draft: H.-H.H., F.J.S.-R., W.M.S., J.M.L., and J.T.P.; Writing – review & editing: H.-H.H., F.J.S.-R., W.M.S., J.M.L., J.L.P., I.R.L., M.R.M., J.T.P., and C.M.R.; Project Administration: A.W.A., A.P., and M.R.M.; Funding acquisition: S.W.L., J.T.P., and C.M.R.

DECLARATION OF INTERESTS

C.D.A. is a co-founder of Chroma Therapeutics and Constellation Pharmaceuticals and a Scientific Advisory Board member of EpiCypher. S.W.L. is an advisor for and has equity in the following biotechnology companies: ORIC Pharmaceuticals, Faeth Therapeutics, Blueprint Medicines, Geras Bio, Mirimus Inc., PMV Pharmaceuticals, and Constellation Pharmaceuticals. C.M.R. is a founder of Apath LLC, a Scientific Advisory Board member of Invaq Therapeutics, Vir Biotechnology, and Arbutus Biopharma and is an advisor for Regulus Therapeutics and Pfizer. The remaining authors declare no competing interests.

Received: September 11, 2020

Revised: November 13, 2020

Accepted: December 9, 2020

Published: December 12, 2020

REFERENCES

Bagchi, P., Inoue, T., and Tsai, B. (2016). EMC1-dependent stabilization drives membrane penetration of a partially destabilized non-enveloped virus. *eLife Sciences* 5, 4921.

Baggen, J., Persoons, L., Jansen, S., Vanstreels, E., Jacquemyn, M., Jochmans, D., Neyts, J., Dallmeier, K., Maes, P., and Daelemans, D. (2020). Identification of TMEM106B as proviral host factor for SARS-CoV-2. *bioRxiv*, 2020.2009.2028.316281.

Blight, K.J., McKeating, J.A., and Rice, C.M. (2002). Highly permissive cell lines for subgenomic and genomic hepatitis C virus RNA replication. *J Virol* 76, 13001–13014.

Bray, N.L., Pimentel, H., Melsted, P., and Pachter, L. (2016). Near-optimal probabilistic RNA-seq quantification. *Nat. Biotechnol.* 34, 525–527.

Carette, J.E., Raaben, M., Wong, A.C., Herbert, A.S., Obernosterer, G., Mulherkar, N., Kuehne, A.I., Kranzusch, P.J., Griffin, A.M., Ruthel, G., et al. (2011). Ebola virus entry requires the cholesterol transporter Niemann-Pick C1. *Nature* 477, 340–343.

Chen, B., Gilbert, L.A., Cimini, B.A., Schnitzbauer, J., Zhang, W., Li, G.-W., Park, J., Blackburn, E.H., Weissman, J.S., Qi, L.S., and Huang, B. (2013). Dynamic imaging of genomic loci in living human cells by an optimized CRISPR/Cas system. *Cell* 155, 1479–1491.

Chua, R.L., Lukassen, S., Trump, S., Hennig, B.P., Wendisch, D., Pott, F., Debnath, O., Thürmann, L., Kurth, F., Völker, M.T., et al. (2020). COVID-19 severity correlates with airway epithelium-immune cell interactions identified by single-cell analysis. *Nat. Biotechnol.* 38, 970–979.

Daniloski, Z., Jordan, T.X., Wessels, H.H., Hoagland, D.A., Kasela, S., Legut, M., Maniatis, S., Mimitou, E.P., Lu, L., Geller, E., et al. (2020). Identification of Required Host Factors for SARS-CoV-2 Infection in Human Cells. *Cell*. <https://doi.org/10.1016/j.cell.2020.10.030>.

DeWeirdt, P.C., Sangree, A.K., Hanna, R.E., Sanson, K.R., Hegde, M., Strand, C., Persky, N.S., and Doench, J.G. (2020). Genetic screens in isogenic mammalian cell lines without single cell cloning. *Nat. Commun.* 11, 752.

Dittmar, M., Lee, J.-S., Whig, K., Segrist, E., Li, M., Jurado, K., Samby, K., Ramage, H., Schultz, D., and Cherry, S. (2020). Drug repurposing screens reveal FDA approved drugs active against SARS-Cov-2. *bioRxiv*, 2020.2006.2019.161042.

Doench, J.G. (2018). Am I ready for CRISPR? A user's guide to genetic screens. *Nat. Rev. Genet.* 19, 67–80.

Doench, J.G., Fusi, N., Sullender, M., Hegde, M., Vaimberg, E.W., Donovan, K.F., Smith, I., Tothova, Z., Wilen, C., Orchard, R., et al. (2016). Optimized sgRNA design to maximize activity and minimize off-target effects of CRISPR-Cas9. *Nat. Biotechnol.* 34, 184–191.

Ewen-Campen, B., Mohr, S.E., Hu, Y., and Perrimon, N. (2017). Accessing the Phenotype Gap: Enabling Systematic Investigation of Paralog Functional Complexity with CRISPR. *Dev. Cell* 43, 6–9.

Gordon, D.E., Hiatt, J., Bouhaddou, M., Rezelj, V.V., Ulferts, S., Braberg, H., Jureka, A.S., Obernier, K., Guo, J.Z., Batra, J., et al.; QCRG Structural Biology Consortium; Zoonomia Consortium (2020a). Comparative host-coronavirus protein interaction networks reveal pan-viral disease mechanisms. *Science* 370, eaabe9403.

Gordon, D.E., Jang, G.M., Bouhaddou, M., Xu, J., Obernier, K., White, K.M., O'Meara, M.J., Rezelj, V.V., Guo, J.Z., Swaney, D.L., et al. (2020b). A SARS-CoV-2 protein interaction map reveals targets for drug repurposing. *Nature* 583, 459–468.

Gu, Y., Cao, J., Zhang, X., Gao, H., Wang, Y., Wang, J., Zhang, J., Shen, G., Jiang, X., Yang, J., et al. (2020). Interaction network of SARS-CoV-2 with host receptome through spike protein. *bioRxiv*, 2020.2009.287508.

Hart, T., Tong, A.H.Y., Chan, K., Van Leeuwen, J., Seetharaman, A., Aregger, M., Chandrashekar, M., Hustedt, N., Seth, S., Noonan, A., et al. (2017). Evaluation and Design of Genome-Wide CRISPR/SpCas9 Knockout Screens. *G3 (Bethesda)* 7, 2719–2727.

Heaton, B.E., Trimarco, J.D., Hamele, C.E., Harding, A.T., Tata, A., Zhu, X., Tata, P.R., Smith, C.M., and Heaton, N.S. (2020). SRSF protein kinases 1 and 2 are essential host factors for human coronaviruses including SARS-CoV-2. *bioRxiv*. <https://doi.org/10.1101/2020.08.14.251207>.

Hoffmann, M., Kleine-Weber, H., Schroeder, S., Krüger, N., Herrler, T., Erichsen, S., Schiergens, T.S., Herrler, G., Wu, N.-H., Nitsche, A.,

- et al. (2020). SARS-CoV-2 Cell Entry Depends on ACE2 and TMPRSS2 and Is Blocked by a Clinically Proven Protease Inhibitor. *Cell* **181**, 271–280.e8.
- Hulswit, R.J.G., Lang, Y., Bakkers, M.J.G., Li, W., Li, Z., Schouten, A., Ophorst, B., van Kuppeveld, F.J.M., Boons, G.-J., Bosch, B.-J., et al. (2019). Human coronaviruses OC43 and HKU1 bind to 9-O-acetylated sialic acids via a conserved receptor-binding site in spike protein domain A. *Proc. Natl. Acad. Sci. USA* **116**, 2681–2690.
- Infante, R.E., Wang, M.L., Radhakrishnan, A., Kwon, H.J., Brown, M.S., and Goldstein, J.L. (2008). NPC2 facilitates bidirectional transfer of cholesterol between NPC1 and lipid bilayers, a step in cholesterol egress from lysosomes. *Proc. Natl. Acad. Sci. USA* **105**, 15287–15292.
- Kamisuki, S., Mao, Q., Abu-Elheiga, L., Gu, Z., Kugimiya, A., Kwon, Y., Shinohara, T., Kawazoe, Y., Sato, S., Asakura, K., et al. (2009). A small molecule that blocks fat synthesis by inhibiting the activation of SREBP. *Chem. Biol.* **16**, 882–892.
- Kelly, M.R., Kostyrko, K., Han, K., Mooney, N.A., Jeng, E.E., Spees, K., Dinh, P.T., Abbott, K.L., Gwinn, D.M., Sweet-Cordero, E.A., et al. (2020). Combined Proteomic and Genetic Interaction Mapping Reveals New RAS Effector Pathways and Susceptibilities. *Cancer Discov.* **10**, 1950–1967.
- Li, S., Wang, L., Berman, M., Kong, Y.-Y., and Dorf, M.E. (2011). Mapping a dynamic innate immunity protein interaction network regulating type I interferon production. *Immunity* **35**, 426–440.
- Li, W., Xu, H., Xiao, T., Cong, L., Love, M.I., Zhang, F., Irizarry, R.A., Liu, J.S., Brown, M., and Liu, X.S. (2014). MAGECK enables robust identification of essential genes from genome-scale CRISPR/Cas9 knockout screens. *Genome Biol.* **15**, 554–512.
- Li, W., Köster, J., Xu, H., Chen, C.-H., Xiao, T., Liu, J.S., Brown, M., and Liu, X.S. (2015). Quality control, modeling, and visualization of CRISPR screens with MAGECK-VISPR. *Genome Biol.* **16**, 281.
- Liu, S.-Y., Aliyari, R., Chikere, K., Li, G., Marsden, M.D., Smith, J.K., Pernet, O., Guo, H., Nusbaum, R., Zack, J.A., et al. (2013). Interferon-inducible cholesterol-25-hydroxylase broadly inhibits viral entry by production of 25-hydroxycholesterol. *Immunity* **38**, 92–105.
- Luna, J.M., Scheel, T.K., Danino, T., Shaw, K.S., Mele, A., Fak, J.J., Nishiuchi, E., Takacs, C.N., Catanese, M.T., de Jong, Y.P., et al. (2015). Hepatitis C virus RNA functionally sequesters miR-122. *Cell* **160**, 1099–1110.
- Luo, J., Yang, H., and Song, B.-L. (2020). Mechanisms and regulation of cholesterol homeostasis. *Nat. Rev. Mol. Cell Biol.* **21**, 225–245.
- Maeda, Y., Murakami, Y., and Kinoshita, T. (2017). Synthesis, Genetics, and Congenital Diseases of GPI-Anchored Proteins. In *Paroxysmal Nocturnal Hemoglobinuria: From Bench to Bedside*, Y. Kanakura, T. Kinoshita, and J.-I. Nishimura, eds. (Tokyo: Springer Japan), pp. 11–54.
- Marceau, C.D., Puschnik, A.S., Majzoub, K., Ooi, Y.S., Brewer, S.M., Fuchs, G., Swaminathan, K., Mata, M.A., Elias, J.E., Sarnow, P., and Carette, J.E. (2016). Genetic dissection of Flaviviridae host factors through genome-scale CRISPR screens. *Nature* **535**, 159–163.
- Marcello, A., Civra, A., Milan Bonotto, R., Nascimento Alves, L., Rajasekharan, S., Giacobone, C., Caccia, C., Cavalli, R., Adami, M., Brambilla, P., et al. (2020). The cholesterol metabolite 27-hydroxycholesterol inhibits SARS-CoV-2 and is markedly decreased in COVID-19 patients. *Redox Biol.* **36**, 101682.
- Michlits, G., Jude, J., Hinterdorfer, M., de Almeida, M., Vainorius, G., Hubmann, M., Neumann, T., Schleiffer, A., Burkard, T.R., Fellner, M., et al. (2020). Multilayered VBC score predicts sgRNAs that efficiently generate loss-of-function alleles. *Nat. Methods* **17**, 708–716.
- Morgens, D.W., Wainberg, M., Boyle, E.A., Ursu, O., Araya, C.L., Tsui, C.K., Haney, M.S., Hess, G.T., Han, K., Jeng, E.E., et al. (2017). Genome-scale measurement of off-target activity using Cas9 toxicity in high-throughput screens. *Nat. Commun.* **8**, 15178.
- Parnas, O., Jovanovic, M., Eisenhaure, T.M., Herbst, R.H., Dixit, A., Ye, C.J., Przybylski, D., Platt, R.J., Tirosh, I., Sanjana, N.E., et al. (2015). A Genome-wide CRISPR Screen in Primary Immune Cells to Dissect Regulatory Networks. *Cell* **162**, 675–686.
- Radhakrishnan, A., Ikeda, Y., Kwon, H.J., Brown, M.S., and Goldstein, J.L. (2007). Sterol-regulated transport of SREBPs from endoplasmic reticulum to Golgi: oxysterols block transport by binding to Insig. *Proc. Natl. Acad. Sci. USA* **104**, 6511–6518.
- Ritchie, M.E., Phipson, B., Wu, D., Hu, Y., Law, C.W., Shi, W., and Smyth, G.K. (2015). limma powers differential expression analyses for RNA-sequencing and microarray studies. *Nucleic Acids Res.* **43**, e47.
- Sadegh, S., Matschinske, J., Blumenthal, D.B., Galindez, G., Kacprowski, T., List, M., Nasirigerdeh, R., Oubounyt, M., Pichlmair, A., Rose, T.D., et al. (2020). Exploring the SARS-CoV-2 virus-host-drug interactome for drug repurposing. *Nat. Commun.* **11**, 3518.
- Sanjana, N.E., Shalem, O., and Zhang, F. (2014). Improved vectors and genome-wide libraries for CRISPR screening. *Nat. Methods* **11**, 783–784.
- Savidis, G., McDougall, W.M., Meraner, P., Ferreira, J.M., Portmann, J.M., Trincucci, G., John, S.P., Aker, A.M., Renzette, N., Robbins, D.R., et al. (2016). Identification of Zika Virus and Dengue Virus Dependency Factors using Functional Genomics. *Cell Rep.* **16**, 232–246.
- Schneider, W.M., Luna, J.M., Hoffmann, H.H., Sánchez-Rivera, F.J., Leal, A.A., Ashbrook, A.W., Le Pen, J., Michailidis, E., Ricardo-Lax, I., Peace, A., et al. (2020). Genome-scale identification of SARS-CoV-2 and pan-coronavirus host factor networks. *Cell*. Published online December 9, 2020. <https://doi.org/10.1016/j.cell.2020.12.006>.
- Shannon, P., Markiel, A., Ozier, O., Baliga, N.S., Wang, J.T., Ramage, D., Amin, N., Schwikowski, B., and Ideker, T. (2003). Cytoscape: a software environment for integrated models of biomolecular interaction networks. *Genome Res.* **13**, 2498–2504.
- Shimano, H., and Sato, R. (2017). SREBP-regulated lipid metabolism: convergent physiology - divergent pathophysiology. *Nat. Rev. Endocrinol.* **13**, 710–730.
- Soneson, C., Love, M.I., and Robinson, M.D. (2015). Differential analyses for RNA-seq: transcript-level estimates improve gene-level inferences. *F1000Res.* **4**, 1521.
- Stenmark, H. (2009). Rab GTPases as coordinators of vesicle traffic. *Nat. Rev. Mol. Cell Biol.* **10**, 513–525.
- Stuart, T., Butler, A., Hoffman, P., Hafemeister, C., Papalexi, E., Mauck, W.M., Hao, Y., Stoerck, M., Smibert, P., and Satija, R. (2019). Comprehensive Integration of Single-Cell Data. *Cell* **177**, 1888–1902.
- Stukalov, A., Girault, V., Grass, V., Bergant, V., Karayel, O., Urban, C., Haas, D.A., Huang, Y., Oubraham, L., Wang, A., et al. (2020). Multi-level proteomics reveals host-perturbation strategies of SARS-CoV-2 and SARS-CoV. *bioRxiv*, 2020.2006.2017.156455.
- V'kovski, P., Gultom, M., Steiner, S., Kelly, J., Russeil, J., Mangeat, B., Cora, E., Pezoldt, J., Holwerda, M., Kratzel, A., et al. (2020). Disparate temperature-dependent virus – host dynamics for SARS-CoV-2 and SARS-CoV in the human respiratory epithelium. *bioRxiv*, 2020.2004.2027.062315.
- Volkmar, N., Thezenas, M.-L., Louie, S.M., Juszkiewicz, S., Nomura, D.K., Hegde, R.S., Kessler, B.M., and Christianson, J.C. (2019). The ER membrane protein complex promotes biogenesis of sterol-related enzymes maintaining cholesterol homeostasis. *J. Cell Sci.* **132**, jcs223453.
- Wang, T., Birsoy, K., Hughes, N.W., Krupczak, K.M., Post, Y., Wei, J.J., Lander, E.S., and Sabatini, D.M. (2015). Identification and characterization of essential genes in the human genome. *Science* **350**, 1096–1101.
- Wang, R., Simoneau, C.R., Kulsuptrakul, J., Bouhaddou, M., Travisano, K., Hayashi, J.M., Carlson-Stevermer, J., Oki, J., Holden, K., Krogan, N.J., et al. (2020). Functional genomic screens identify human host factors for SARS-CoV-2 and common cold coronaviruses. *bioRxiv*, 2020.09.24.312298.
- Wei, J., Alfajaro, M.M., DeWeirdt, P.C., Hanna, R.E., Lu-Culligan, W.J., Cai, W.L., Strine, M.S., Zhang, S.M., Graziano, V.R., Schmitz, C.O., et al. (2020). Genome-wide CRISPR Screens Reveal Host Factors Critical for SARS-CoV-2 Infection. *Cell*. <https://doi.org/10.1016/j.cell.2020.10.028>.

Wylter, E., Mösbauer, K., Franke, V., Diag, A., Gottula Lina, T., Arsie, R., Klironomos, F., Koppstein, D., Ayoub, S., Buccitelli, C., et al. (2020). Bulk and single-cell gene expression profiling of SARS-CoV-2 infected human cell lines identifies molecular targets for therapeutic intervention. *bioRxiv*. <https://doi.org/10.1101/2020.05.05.079194>.

Zang, R., Case, J.B., Gomez Castro, M.F., Liu, Z., Zeng, Q., Zhao, H., Son, J., Rothlauf, P.W., Hou, G., Bose, S., et al. (2020). Cholesterol 25-hydroxylase suppresses SARS-CoV-2 replication by blocking membrane fusion. *bioRxiv*, 2020.2006.2008.141077.

Zhang, R., Miner, J.J., Gorman, M.J., Rausch, K., Ramage, H., White, J.P., Zuiani, A., Zhang, P., Fernandez, E., Zhang, Q., et al. (2016). A CRISPR screen defines a signal peptide processing pathway required by flaviviruses. *Nature* 535, 164–168.

Zhou, Y., Hou, Y., Shen, J., Huang, Y., Martin, W., and Cheng, F. (2020). Network-based drug repurposing for novel coronavirus 2019-nCoV/SARS-CoV-2. *Cell Discov.* 6, 14–18.

Zhu, Y., Feng, F., Hu, G., Wang, Y., Yu, Y., Zhu, Y., Xu, W., Cai, X., Sun, Z., Han, W., et al. (2020). The S1/S2 boundary of SARS-CoV-2 spike protein modulates cell entry pathways and transmission. *bioRxiv*, 2020.2008.2025.266775.

STAR★METHODS

KEY RESOURCES TABLE

REAGENT or RESOURCE	SOURCE	IDENTIFIER
Antibodies		
rabbit polyclonal anti-SARS-CoV-2 nucleoprotein	GeneTex, Inc.	Cat#GTX135357; RRID: AB_2868464
mouse monoclonal anti-dsRNA antibody J2	Scicons	Cat#10010500 RRID: AB_2651015
goat polyclonal anti-rabbit IgG conjugated to AF594	ThermoFisher Scientific, Inc.	Cat#A-11012 RRID: AB_141359
goat polyclonal anti-mouse IgG conjugated to AF488	ThermoFisher Scientific, Inc.	Cat#A-11001; RRID: AB_2534069
Bacterial and Virus Strains		
SARS-CoV-2 (strain: WA1/2020) GenBank: MT246667.1	BEI Resources	Cat#NR-52281
HCoV-NL63 GenBank: AY567487	BEI Resources	Cat#NR-470
HCoV-OC43	ZeptoMetrix	Cat#0810024CF
HCoV-229E	Laboratory of Volker Thiel	N/A
Endura electrocompetent cells	Lucigen	Cat#60242-2
Chemicals, Peptides, and Recombinant Proteins		
TRIzol™ Reagent	ThermoFisher Scientific	Cat#15596026; CAS: 108-95-2, 593-84-0, 1762-95-4
DharmaFECT-4	ThermoFisher Scientific	Cat#NC1411281
Hoechst 33342 solution	ThermoFisher Scientific, Inc.	Cat#62249; CAS: 23491-52-3
BsmBI Restriction Enzyme	New England Biolabs	Cat#R0739L
Q5 High-Fidelity 2X Master Mix	New England Biolabs	Cat#M0491L
T4 DNA Ligase	New England Biolabs	Cat#M0202M
Critical Commercial Assays		
Monarch Genomic DNA Purification kit	New England Biolabs	Cat#T3010L
Plasmid Plus Maxi Kit	QIAGEN	Cat#12963
QIAquick Gel Extraction Kit	QIAGEN	Cat#28706
Deposited Data		
Raw and analyzed CRISPR screening data	This study	GEO: GSE162039
Raw and analyzed CRISPR screening data	This study	Mendeley: https://doi.org/10.17632/9rc2n4bkmv.1
Experimental Models: Cell Lines		
Human: Lenti-X™ 293T (embryonic kidney epithelial)	Takara Bio Inc.	Cat#632180; RRID: CVCL_4401
Human: Huh-7.5 (hepatocyte)	Laboratory of Charles M Rice	RRID: CVCL_7927
Human: A549 (lung epithelial)	ATCC	Cat#CCL-185; RRID: CVCL_0023
Oligonucleotides		
Human SARS-CoV-2 host protein interactome CRISPR library (oligo pool; 3,944 sgRNAs in total)	This study; Agilent HiFi Oligonucleotide Synthesis Platform	Addgene: Cat.#163959; RRID: Addgene_163959
All oligonucleotides used for screen deconvolution are available in the supplementary material		

(Continued on next page)

Continued

REAGENT or RESOURCE	SOURCE	IDENTIFIER
Recombinant DNA		
Plasmid: LentiCas9-Blast	Sanjana et al., 2014	Addgene: Cat.#52962; RRID: Addgene_52962
Plasmid: LentiGuide-PuroV2 (variant of LentiGuide-Puro)	Sanjana et al., 2014	Addgene: Cat#52963; RRID: Addgene_52963
Plasmid: HIV-1 Gag-Pol	This study	N/A
Plasmid: VSV-G	This study	N/A
Plasmid: pSCRPSY_TMPRSS2-2A-NeoR_ACE2 (modified SCRPSY vector, GenBank: KT368137.1)	This study	N/A
Software and Algorithms		
Vienna Bioactivity CRISPR score	https://www.vbc-score.org/	
Broad Institute sgRNA Designer	https://portals.broadinstitute.org/gpp/public/analysis-tools/sgrna-design	
Prism	GraphPad Software, Inc.	https://www.graphpad.com/scientific-software/prism/
Model-based Analysis of Genome-wide CRISPR-Cas9 Knockout (MAGeCK)	Li et al., 2014	https://sourceforge.net/p/mageck/wiki/Home/
Cytoscape	Shannon et al., 2003	https://cytoscape.org/
Seurat	Stuart et al., 2019	https://satijalab.org/seurat/
Other		
15-cm LB-Carbenicillin plates	Teknova	Cat#L5010
Gene Pulser/Micropulser Cuvettes	Bio-Rad	Cat#1652083
Revolve inverted microscope	ECHO	https://discover-echo.com/revolve
ImageXpress Micro XLS	Molecular Devices	https://www.moleculardevices.com

RESOURCE AVAILABILITY**Lead contact**

Further information and requests for resources and reagents should be directed to and will be fulfilled by the Lead Contact, Charles M. Rice (ricec@mail.rockefeller.edu).

Materials availability

All unique/stable reagents generated in this study are available from the Lead Contact with a completed Materials Transfer Agreement. The Human SARS-CoV-2 host protein interactome CRISPR library has been made available via Addgene (#163959).

Data and code availability

Data supporting the findings of this study are reported in [Figures S1–S4](#) and [Tables S1](#) and [S2](#). Original data corresponding to CRISPR screens have been deposited to NCBI GEO (Accession number: GSE162039) and Mendeley Data (<https://doi.org/10.17632/9rc2n4bkmv.1>). All reagents and materials generated in this study will be available to the scientific community through Addgene and/or MTAs. Of note, the Human SARS-CoV-2 host protein interactome CRISPR library has been made available via Addgene (#163959).

EXPERIMENTAL MODEL AND SUBJECT DETAILS**Cell culture**

Lenti-X 293T cells (*H. sapiens*; sex: female) (Takara, cat. #632180), Huh-7.5 cells (*H. sapiens*; sex: male) (Blight et al., 2002), and A549 cells (*H. sapiens*; sex: male) (ATCC®, cat. #CCL-185) were maintained at 37°C and 5% CO₂ in Dulbecco's Modified Eagle Medium (DMEM, Fisher Scientific, cat. #11995065) supplemented with 0.1 mM nonessential amino acids (NEAA, Fisher Scientific, cat. #11140076) and 10% hyclone fetal bovine serum (FBS, HyClone Laboratories, Lot. #AUJ35777). All cell lines have tested negative for contamination with mycoplasma.

Production and titration of coronavirus stocks

SARS-CoV-2 (strain: USA-WA1/2020) and HCoV-NL63 were obtained from BEI Resources (NR-52281 and NR-470). HCoV-OC43 was obtained from ZeptoMetrix (cat. #0810024CF) and HCoV-229E was generously provided by Volker Thiel (University of Bern). All viruses were amplified at 33°C in Huh-7.5 cells to generate a P1 stock. To generate working stocks, Huh-7.5 cells were infected at a multiplicity of infection (MOI) of 0.01 plaque forming unit (PFU)/cell (SARS-CoV-2, HCoV-NL63, HCoV-OC43) and 0.1 PFU/cell (HCoV-229E) and incubated at 33°C until virus-induced CPE was observed. Supernatants were subsequently harvested, clarified by centrifugation (3,000 $g \times 10$ min) at 4 dpi (HCoV-229E), 6 dpi (SARS-CoV-2, HCoV-OC43) and 10 dpi (HCoV-NL63), and aliquots stored at -80°C .

Viral titers were measured on Huh-7.5 cells by standard plaque assay. Briefly, 500 μL of serial 10-fold virus dilutions in Opti-MEM were used to infect 4×10^5 cells seeded the day prior into wells of a 6-well plate. After 90 min adsorption, the virus inoculum was removed, and cells were overlaid with DMEM containing 10% FBS with 1.2% microcrystalline cellulose (Avicel). Cells were incubated for 4 days (HCoV-229E), 5 days (SARS-CoV-2, HCoV-OC43) and 6 days (HCoV-NL63) at 33°C, followed by fixation with 7% formaldehyde and crystal violet staining for plaque enumeration. All SARS-CoV-2 experiments were performed in a biosafety level 3 laboratory.

To confirm the identity of the viruses, RNA from 200 μL of each viral stock was purified by adding 800 μL TRIzol Reagent (ThermoFisher Scientific, cat. #15596026) plus 200 μL chloroform then centrifuged at 12,000 $g \times 5$ min. The upper aqueous phase was moved to a new tube and an equal volume of isopropanol was added. This was then added to an RNeasy mini kit column (QIAGEN, cat. #74014) and further purified following the manufacturer's instructions. Viral stocks were confirmed via next generation sequencing at the NYU Genome Technology Center using an Illumina stranded TruSeq kit and omitting the polyA selection step. Libraries were then sequenced by MiSeq Micro (2 \times 250 bp paired end reads).

METHOD DETAILS

Plasmids and sgRNA cloning

To generate stable Cas9-expressing cell lines, we used lentiCas9-Blast (Addgene, cat. #52962). To express sgRNAs, we used lentiGuidePurov2, a variant of lentiGuide-Puro (Sanjana et al., 2014) (Addgene, cat. #52963) that contains an improved sgRNA scaffold based on Chen et al., 2013 (Chen et al., 2013). For sgRNA cloning, lentiGuidePurov2 was linearized with BsmBI (NEB) and ligated with BsmBI-compatible annealed and phosphorylated oligos encoding sgRNAs using high concentration T4 DNA ligase (NEB). All sgRNA sequences used are listed in Table S1. HIV-1 Gag-Pol and VSV-G plasmid sequences are available upon request.

Generation of A549_{ACE2/TMPRSS2} cells

To render A549 cells permissive to SARS-CoV-2 infection, we delivered human ACE2 and TMPRSS2 cDNA to cells by lentivirus transduction with pSCRPSY_TMPRSS2-2A-NeoR_ACE2, a modified SCRPSY vector (GenBank: KT368137.1). We generated the pSCRPSY_TMPRSS2-2A-NeoR_ACE2 lentiviral construct by cloning the ACE2 open reading frame into the multiple cloning site and by replacing the PAC (puromycin acetyl transferase) 2A (stop-start/skip from FMDV) TagRFP (red fluorescent protein) cassette with a TMPRSS2-2A-NeoR (neomycin phosphotransferase II; NPT II) cassette. The pSCRPSY_TMPRSS2-2A-NeoR_ACE2 plasmid sequence is available upon request.

Cloning of the Human SARS-CoV-2 host protein interactome CRISPR library

sgRNA sequences (10 per gene) targeting 332 host factor proteins recently shown to interact with SARS-CoV-2 proteins (Gordon et al., 2020b) (Table S1A) were designed using a combination of the Vienna Bioactivity CRISPR score (Michlits et al., 2020) and the Broad Institute sgRNA Designer tool (Doench et al., 2016). In addition, a subset of sgRNAs were hand-picked from the Wang-Sabatini genome-wide libraries (Wang et al., 2015). We also included 314 safe-targeting sgRNAs (Morgens et al., 2017) and 310 sgRNAs targeting essential genes (Hart et al., 2017; Michlits et al., 2020) for a total of 3,944 sgRNAs. We refer to this library as the 'Human SARS-CoV-2 host protein interactome CRISPR library'. Oligo pools were synthesized by Agilent Technologies. The Human SARS-CoV-2 host protein interactome CRISPR library was cloned into lentiGuidePurov2 using a modified version of the protocol published by Doench et al. (Doench et al., 2016) to ensure a library representation of $> 10,000$ -fold. Briefly, the oligo pool was selectively amplified using barcoded forward and reverse primers that append cloning adapters at the 5' and 3' ends of the sgRNA insert (Table S1B), purified using the QIAquick PCR Purification Kit (QIAGEN), and ligated into BsmBI-digested and dephosphorylated lentiGuidePurov2 using high-concentration T4 DNA ligase (NEB). A total of 4.8 μg of ligated lentiGuidePurov2 Gordon et al. SARS-CoV-2 Human Interactome CRISPR Library plasmid DNA was electroporated into Endura electrocompetent cells (1.2 μg per electroporation) (Lucigen), recovered for 1 h at 37°C, plated across 20x 15-cm LB-Carbenicillin plates (Teknova), and incubated at 37°C for 16 h. The total number of bacterial colonies per sub-pool was quantified using serial dilution plates to ensure a library representation of $> 10,000$ -fold. The next morning, bacterial colonies were scraped and briefly expanded for 4 h at 37°C in 500 mL of LB-Carbenicillin. Plasmid DNA was isolated using the Plasmid Plus Maxi Kit (QIAGEN). To assess sgRNA distribution, we amplified the sgRNA target region using primers that append Illumina sequencing adapters on the 5' and 3' ends of the amplicon, as well as a random nucleotide stagger and unique demultiplexing barcode on the 5' end (Table S1C). Library amplicons were size-selected on a 2.5% agarose gel, purified using the QIAquick Gel Extraction Kit (QIAGEN), and sequenced on an Illumina NextSeq instrument (75 nt single end reads). The Human SARS-CoV-2 host protein interactome CRISPR library has been made available via Addgene (#163959).

Lentivirus production

To produce the lentiGuidePurov2 sgRNA lentivirus library, Lenti-X 293TTM cells were seeded in 25 mL DMEM supplemented with 0.1 mM NEAA and 3% FBS at 6.25×10^6 per dish in four poly-L-lysine coated p150 dishes. The following day media was removed and replaced with 20 mL fresh media and each plate was transfected with 15.6 μ g lentiGuidePurov2 plasmid, 7.8 μ g VSV-G plasmid, and 11.7 μ g HIV Gag-Pol plasmid using LipofectamineTM 2000 (Fisher Scientific, cat. #11668019) at 2.2 μ l per μ g DNA ratio supplemented with PLUS Reagent (Fisher Scientific, cat. #11514015) at 4.4 μ l per μ g DNA diluted in 6 mL Opti-MEM Reduced Serum Medium (Fisher Scientific, cat. #51985034). Six h post transfection, the media was removed and replaced with 20 mL per plate fresh media. Twenty-four h later media was removed and replaced with fresh media. The following day lentivirus-containing media was collected, clarified by centrifugation at $500 g \times 5$ min, filtered through a 0.22 μ m filter (Corning, cat. #431153) and concentrated ~70-fold overnight at 4°C using Lenti-XTM concentrator (Takara, cat. #631232) following the manufacturer's instructions. Aliquots were stored at -80°C.

Lentiviral transduction of cell lines

Huh-7.5-Cas9 cells were generated by lentiviral transduction of lentiCas9-Blast followed by selection and expansion in the presence of 5 μ g/mL blasticidin. To deliver the lentiGuidePurov2 sgRNA library, 3.6×10^7 Huh-7.5-Cas9 cells were transduced by spinoculation at $1,000 g \times 1$ h in media containing 4 μ g/mL polybrene (Millipore, cat. #TR-1003-G) and 20 mM HEPES (GIBCO, cat. #15630080) at a MOI = 0.14 to achieve ~1,500-fold overrepresentation of each sgRNA. Cells were spinoculated at 3×10^6 cells/well in 12-well plates in 1.5 mL final volume. Six h post transduction, cells were trypsinized and transferred to T175 flasks at 6×10^6 cells/flask. Two days later, media was replaced with fresh media containing 1.5 μ g/mL puromycin and expanded for six days prior to seeding for coronavirus infection.

CRISPR-Cas9 genetic screen

Huh-7.5-Cas9 cells transduced with the lentiGuidePurov2 sgRNA library were seeded in p150 plates at 4.5×10^6 cells/plate in triplicate for each condition (mock, HCoV-229E, HCoV-NL63, HCoV-OC43, and SARS-CoV-2). The following day, the media was removed and viruses diluted in 10 mL/plate OptiMEM were added to cells. The inocula of HCoV-229E, HCoV-NL63 and SARS-CoV-2 were supplemented with 1 μ g/mL TPCK-treated trypsin (Sigma-Aldrich, cat. #T1426) increasing the rate of infection. After two h on a plate rocker at 37°C, 10 mL/plate media was added and plates were moved to 5% CO₂ incubators set to 33°C or 37°C. Coronavirus screens were performed at the following temperatures and MOIs in PFU/cell: HCoV-229E = 0.05 at 37°C; HCoV-NL63 = 0.01 at 33°C; HCoV-OC43 = 1 at 33°C; SARS-CoV-2 = 0.25 at 33°C and 37°C. Mock cells cultured at both temperatures were passaged every 3-4 days and re-seeded at 4.5×10^6 cells/plate. Media was changed on virus infected plates as needed to remove cellular debris. Mock cells and cells that survived coronavirus infection were harvested approximately two weeks post infection.

Genomic DNA (gDNA) was isolated via ammonium acetate salt precipitation if greater than 1.5×10^6 cells were recovered or using the Monarch Genomic DNA Purification kit (NEB) if fewer per the manufacturer's instructions. gDNA concentrations were quantitated via UV spectroscopy and normalized to 250 ng/ μ l with 10 mM Tris using a MANTIS Liquid Handler (Formulatrix). The library was amplified from gDNA by a two-stage PCR approach. For PCR1 amplification, gDNA samples were divided into 50 μ l PCR reactions. Each well consisted of 25 μ l of NEB Q5 High-Fidelity 2X Master Mix, 2.5 μ l of 10 μ M forward primer Nuc-PCR1_Nextera-Fwd Mix, 2.5 μ l of 10 μ M reverse primer Nuc-PCR1_Nextera-Rev Mix and 20 μ l of gDNA (5 μ g each reaction). PCR1 cycling settings: initial 30 s denaturation at 98°C; then 10 s at 98°C, 30 s at 65°C, 30 s at 72°C for 25 cycles; followed by 2 min extension at 72°C. PCR1 samples were cleaned up with SPRI beads and normalized to 20 ng/ μ l. Each PCR2 reaction consisted of 25 μ l of NEB Q5 High-Fidelity 2X Master Mix, 2.5 μ l 10 μ M Common_PCR2_Fwd primer, and 2.5 μ l of 10 μ M reverse I7 indexing primer. PCR2 cycling settings: initial 30 s at 98°C; then 10 s at 98°C, 30 s at 65°C, 30 s at 72°C for 13 cycles. PCR products were again purified by SPRI, pooled and sequenced on an Illumina NextSeq 500 at the NYU Genome Technology Center using standard Nextera sequencing primers and 75 cycles.

Arrayed validation of gene candidates using siRNA knockdown

A total of 5×10^3 Huh-7.5 or A549_{ACE2/TMPRSS2} cells per well were seeded on 96-well plates in quadruplicate, transfected with siRNAs (Dharmacon) 2-4 h post-seeding, and incubated for 60 h before infection with coronaviruses. The four coronaviruses studied here have different infection and spread efficiencies, and conditions were optimized to achieve robust infection in each cell line. For infection of Huh-7.5 cells, we used 5,000 SARS-CoV-2 PFU/well, 1,250 HCoV-229E PFU/well, 100 HCoV-NL63 PFU/well, and 15,000 HCoV-OC43 PFU/well. For infection of A549_{ACE2/TMPRSS2} cells, we used 2,500 SARS-CoV-2 PFU/well. We state the number of infectious particles in PFU/well rather than MOI because the target cells were infected three days after siRNA transfection and in some cases gene knockdown affected the number of cells per well, which influences the effective MOI. Thus, PFU/well is a more precise measurement unit for these experiments. SARS-CoV-2 and HCoV-229E infected plates were incubated for 24 h at 37°C, and HCoV-NL63 and HCoV-OC43 infected plates for 72 h at 33°C. Cells were then fixed by adding an equal volume of 7% formaldehyde to the wells, followed by permeabilization with 0.1% Triton X-100 for 10 min. After extensive washing, cells were incubated for 1 h at room temperature with a blocking solution of 5% goat serum in PBS (Jackson ImmunoResearch, cat. #005-000-121). To stain SARS-CoV-2 infected cells, a rabbit polyclonal anti-SARS-CoV-2 nucleocapsid antibody (GeneTex, cat. #GTX135357) was added to the cells at 1:1,000 dilution in blocking solution. The mouse monoclonal anti-dsRNA antibody J2 (Scicons, cat. #10010500) was used

at a 1:1,000 dilution to stain cells infected with HCoV-229E, HCoV-NL63 and HCoV-OC43. After overnight incubation at 4°C, cells were washed and stained with secondary antibodies at a 1:2,000 dilution: goat anti-rabbit AlexaFluor 594 (Life Technologies, cat. #A-11012) and goat anti-mouse AlexaFluor 488 (Life Technologies, cat. #A-11001). Nuclei were stained with Hoechst 33342 (ThermoFisher Scientific, cat. #62249) at 1 µg/mL. Images were acquired with a fluorescence microscope and analyzed using ImageXpress Micro XLS (Molecular Devices, Sunnyvale, CA). We included non-targeting siRNAs (Dharmacon) as controls for all of these experiments.

QUANTIFICATION AND STATISTICAL ANALYSIS

Statistical details of experiments can be found in the figure legends, including the statistical tests used. In all figures, center represents the mean and error bars represent standard error of the mean (SEM), unless otherwise noted in the figure legend. Where non-parametric significance tests are indicated, the data were not tested for normality. $p < 0.05$ was considered statistically significant. Generation of plots and statistical analyses were performed using the R statistical computing environment or Prism 8 (GraphPad).

Analysis of CRISPR-Cas9 genetic screen data

FASTQ files were processed and trimmed to retrieve sgRNA target sequences followed by enumeration of sgRNAs in the reference sgRNA library file using MAGeCK (Li et al., 2014). MAGeCK was also used to determine gene essentiality (beta) using its maximum likelihood estimation (MLE) algorithm. Z-scores for visualization in the form of heatmaps were computed using the following approach: for each condition, the log₂ fold change with respect to the initial condition was computed. A natural cubic spline with 4 degrees of freedom was fit to each pair of infected and control cells and residuals were extracted. To obtain gene-wise data, the mean residuals for each group of sgRNAs was calculated, a z-score was computed, and a p value was determined using a 2-sided normal distribution test. p values were combined across screens using Fisher's sumlog approach and corrected for multiple testing using the method of Benjamini & Hochberg. For construction of the network in Figure 4, the interactome network from Gordon et al. was obtained from NDeX (ndexbio.org, UUID: 5d97a04a-6fab-11ea-bfdc-0ac135e8bacf) and imported into Cytoscape (Shannon et al., 2003). Significant CRISPR hits from any virus were mapped onto this network and recolored in Adobe Illustrator.

Analysis of RNaseq and scRNaseq data

RNaseq data from Huh-7.5 cells was obtained from GSE64677 (Luna et al., 2015) and processed using kallisto (Bray et al., 2016) followed by a tximport (Soneson et al., 2015) transcript-to-gene level transformation and then a limma-Voom approach (Ritchie et al., 2015) for read normalization. Transcript indices for kallisto were created from FASTA files from Ensembl release 100 for hg38 for all annotated cDNA and ncRNA transcripts. For Calu-3 cells, data were obtained from GSE148729 (Wyler et al., 2020). Specifically, count tables for poly-A selected libraries from bulk RNA sequenced Calu-3 cells were used and processed with the same limma-Voom read normalization scheme above. Throughout, Ensembl gene IDs were used to avoid gene symbol misidentifications. For scRNaseq analysis, Seurat objects were downloaded from FigShare (<https://doi.org/10.6084/m9.figshare.12436517>) (Chua et al., 2020). Using Seurat (Stuart et al., 2019), scaled average expression values for all high confidence SARS-CoV-2 CRISPR hits were plotted using the DotPlot() function with default parameters.

Supplemental Information

**Functional interrogation of a SARS-CoV-2
host protein interactome identifies unique
and shared coronavirus host factors**

H.-Heinrich Hoffmann, Francisco J. Sánchez-Rivera, William M. Schneider, Joseph M. Luna, Yadira M. Soto-Feliciano, Alison W. Ashbrook, Jérémie Le Pen, Andrew A. Leal, Inna Ricardo-Lax, Eleftherios Michailidis, Yuan Hao, Ansgar F. Stenzel, Avery Peace, Johannes Zuber, C. David Allis, Scott W. Lowe, Margaret R. MacDonald, John T. Poirier, and Charles M. Rice

SUPPLEMENTAL FIGURE TITLES AND LEGENDS

Supplementary Figure S1. Cell type selection and screen QC, Related to Figures 1 and 2.

(A) Expression profile distributions of all 332 interactome genes in Huh-7.5 or Calu-3 cells are shown in red. The expression distributions for all genes are also shown with coronavirus entry factors highlighted.

(B) Crystal violet staining of infected cells at 7 days post infection. Huh-7.5 or Calu-3 cells were infected with SARS-CoV-2 (MOI = 0.5 PFU/cell) or endemic coronaviruses HCoV-OC43 (MOI = 1 PFU/cell), HCoV-229E (MOI = 0.5 PFU/cell), and HCoV-NL63 (MOI = 0.01 PFU/cell) at either 33 °C or 37 °C.

(C) Species accumulation curve for each sgRNA observed more than 10 times for actual (blue) and projected sequenced reads (orange). Horizontal dashed line indicates library size. Vertical dashed line indicates number of reads sequenced.

(D) Heatmap of Pearson correlation coefficients of normalized sgRNA counts.

(E) Receiver operating characteristic (ROC) curves

(F) Bar charts indicating the area under the curve (AUC) for each ROC curve in E.

Supplementary Figure S2. Validation of candidate host factors with HCoV-229E, HCoV-NL63, and HCoV-OC43, Related to Figure 3.

(A) Candidate validation in Huh-7.5 cells in the context of infection by HCoV-229E. Cells were grown at 37 °C and infected using 1,250 HCoV-229E PFU/well. Plates were quantified at 24 hours post-infection. Data represent the average \pm S.E.M. of n=4 replicates per target gene. Significance for viral infection percentage values was evaluated using t-test (2-tailed, unpaired) as compared to non-targeting (NT) controls (set at 100%). * denotes $p < 0.05$.

(B) Candidate validation in Huh-7.5 cells in the context of infection by HCoV-NL63. Cells were grown at 33 °C and infected using 100 HCoV-NL63 PFU/well. Plates were quantified at 72 hours post-infection. Data represent the average \pm S.E.M. of n=4 replicates per target gene. Significance for viral infection percentage values was evaluated using t-test (2-tailed, unpaired) as compared to non-targeting (NT) controls (set at 100%). * denotes $p < 0.05$.

(C) Candidate validation in Huh-7.5 cells in the context of infection by HCoV-OC43. Cells were grown at 33 °C and infected using 15,000 HCoV-OC43 PFU/well. Plates were quantified at 72 hours post-infection. Data represent the average \pm S.E.M. of n=4 replicates per target gene. Significance for viral infection percentage values was evaluated using t-test (2-tailed, unpaired) as compared to non-targeting (NT) controls (set at 100%). * denotes $p < 0.05$.

(D) Heatmap representation of data from panels A-C. Entry receptors not used by the corresponding virus were not tested and are highlighted with an “X”.

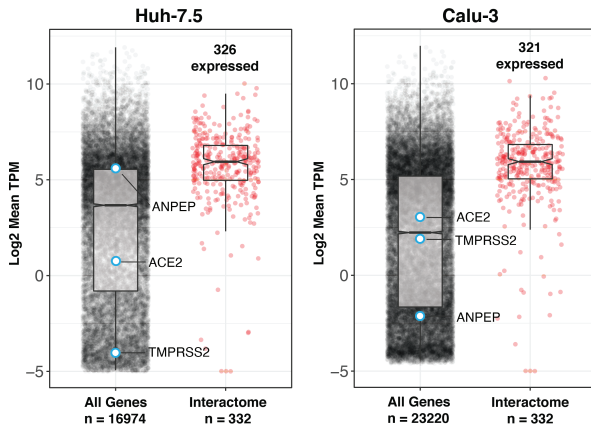
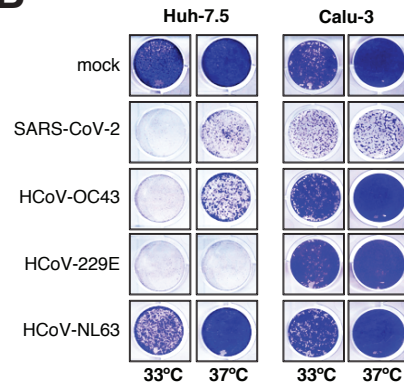
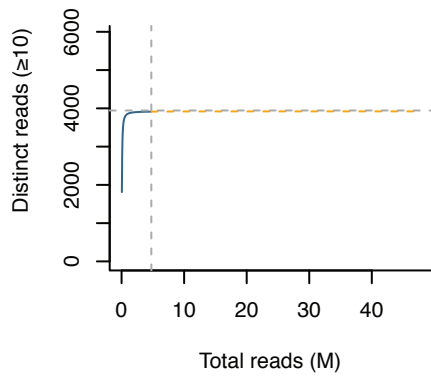
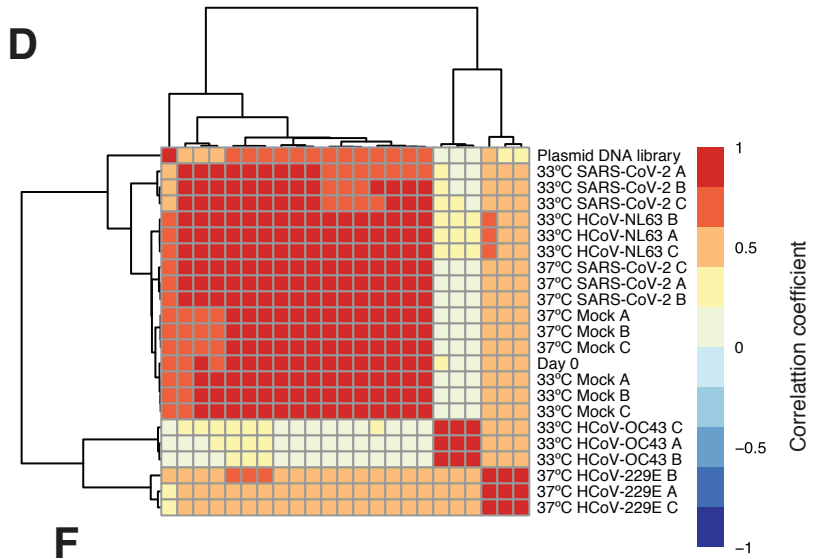
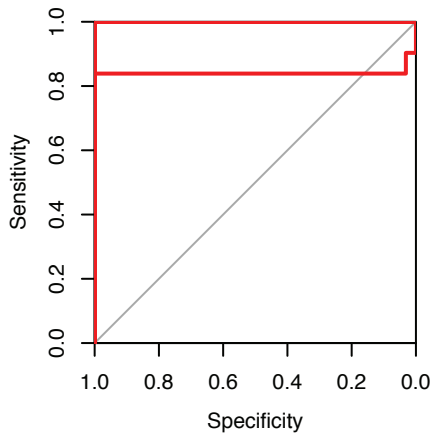
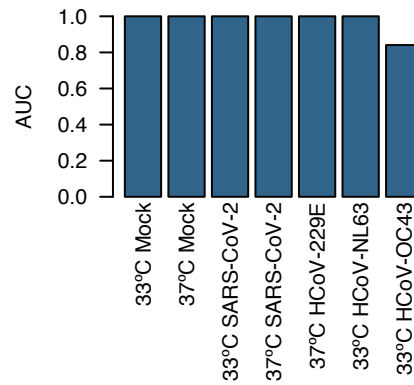
Supplementary Figure S3. Detection and quantification of coronavirus infection via immunofluorescence, Related to Figure 3.

(A) Detection and quantification of SARS-CoV-2 infection by immunofluorescent staining for SARS-CoV-2 N protein. Scale bars are 70um.

(B) Detection and quantification of HCoV-229E infection by immunofluorescent staining for dsRNA. Scale bars are 70um.

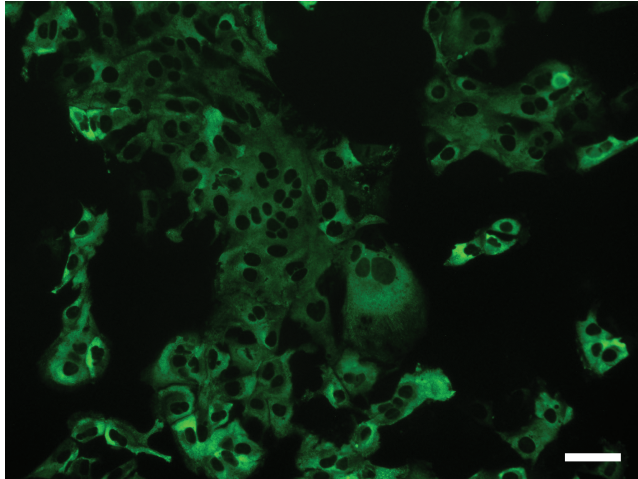
Figure S4. High confidence CRISPR hits are expressed in the airway, Related to Figure 5.

(A-B) DotPlots depicting mean expression z-scores for enriched (A) or depleted (B) CRISPR hits per indicated cell type cluster from upper respiratory tract scRNAseq in humans from (Chua et al., 2020). ACE2 and SARS-CoV-2 susceptible cell types are highlighted in red.

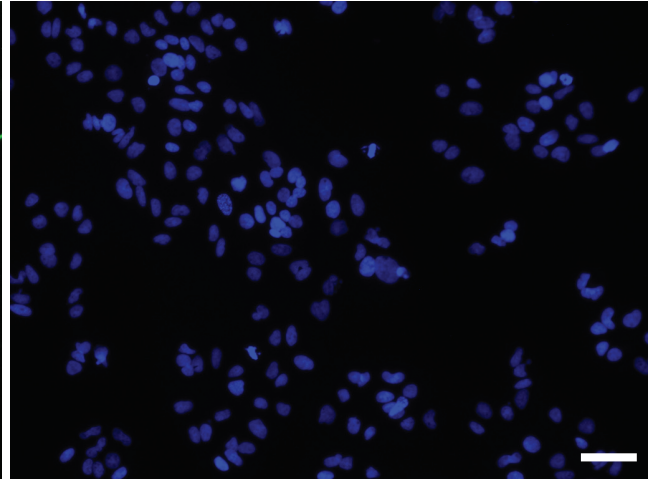
A**B****C****D****E****F**

A

Huh-7.5 cells infected with SARS-CoV-2



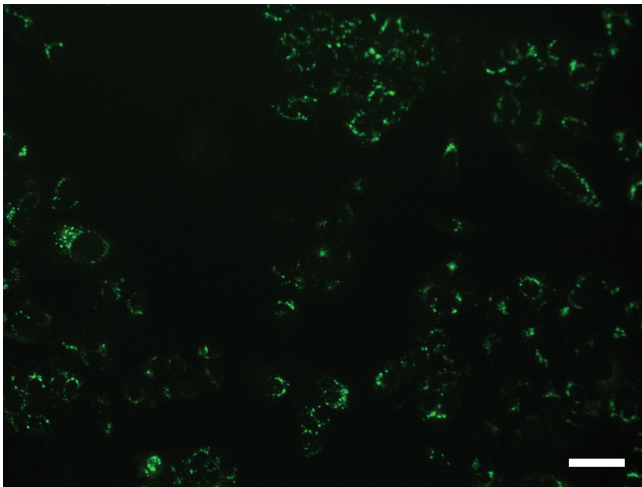
SARS-CoV-2 N Protein



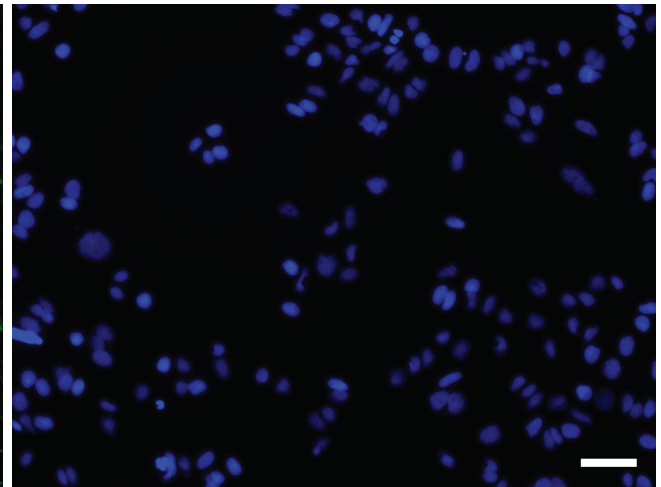
DAPI

B

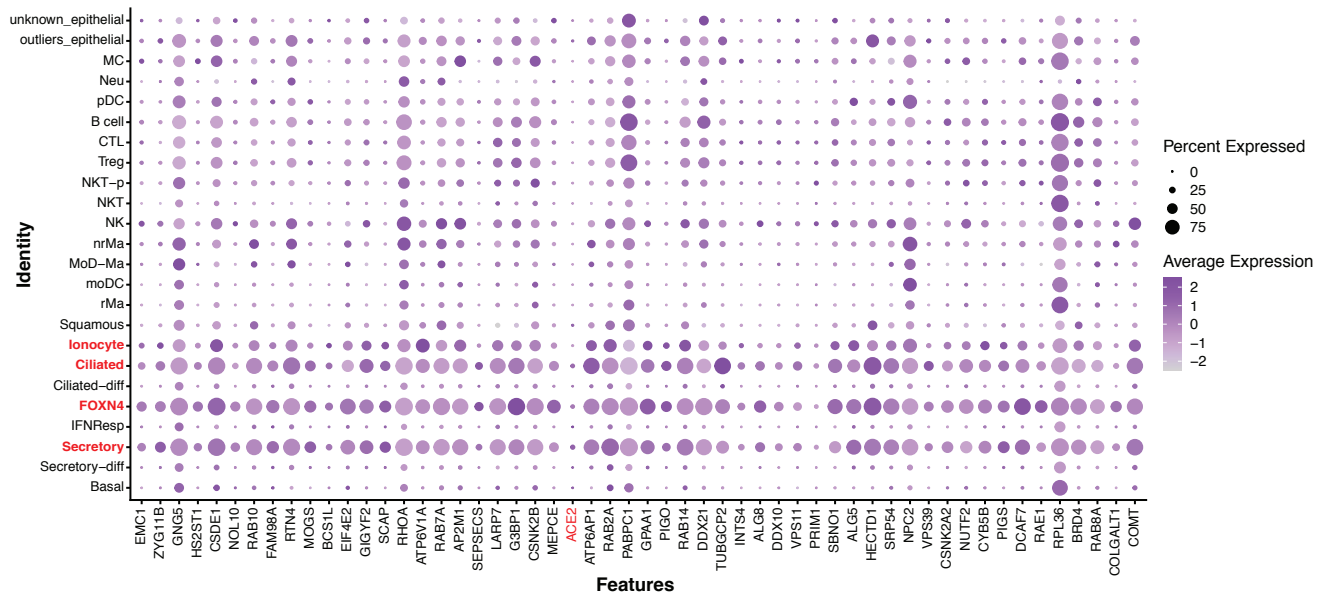
Huh-7.5 cells infected with HCoV-229E



dsRNA



DAPI

A**Upper respiratory tract scRNAseq - Enriched high confidence CRISPR hits****B****Upper respiratory tract scRNAseq - Depleted high confidence CRISPR hits**