

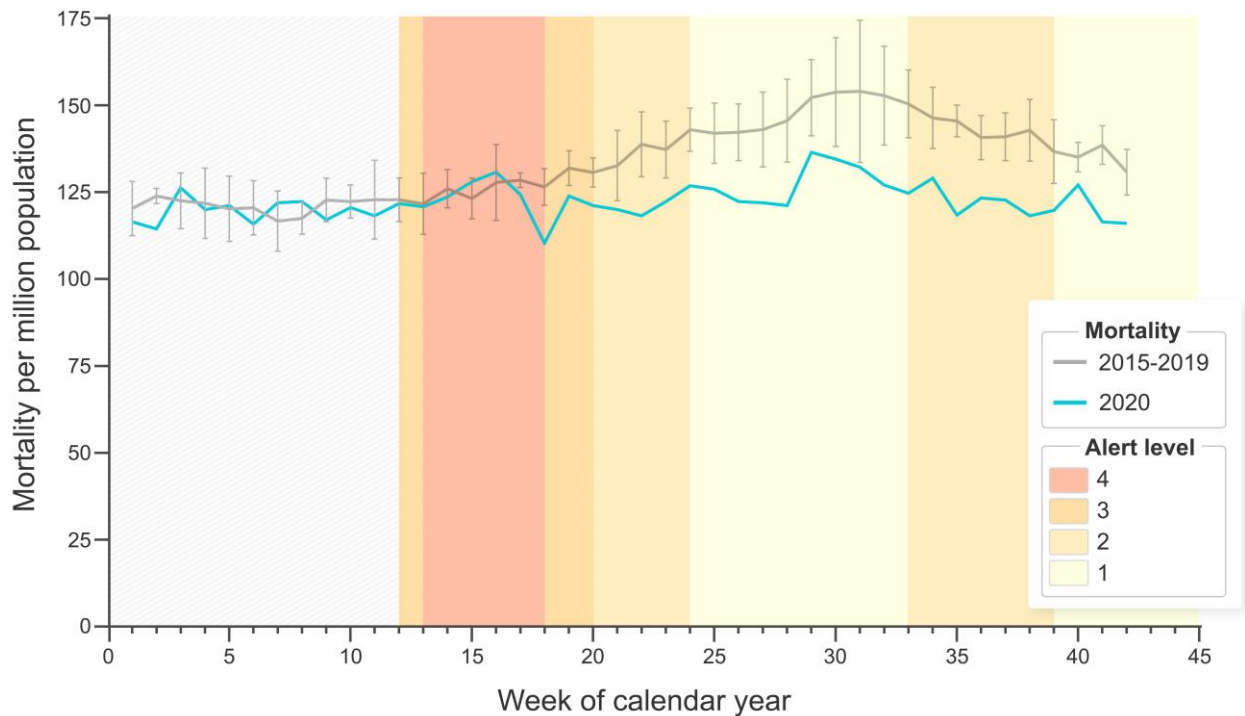
THE LANCET

Supplementary appendix

This appendix formed part of the original submission. We post it as supplied by the authors.

Supplement to: Kung S, Doppen M, Black M, Hills T, Kearns N. Reduced mortality in New Zealand during the COVID-19 pandemic. *Lancet* 2020; published online Dec 14. [http://dx.doi.org/10.1016/S0140-6736\(20\)32647-7](http://dx.doi.org/10.1016/S0140-6736(20)32647-7).

All-cause mortality in New Zealand by Week (2020)

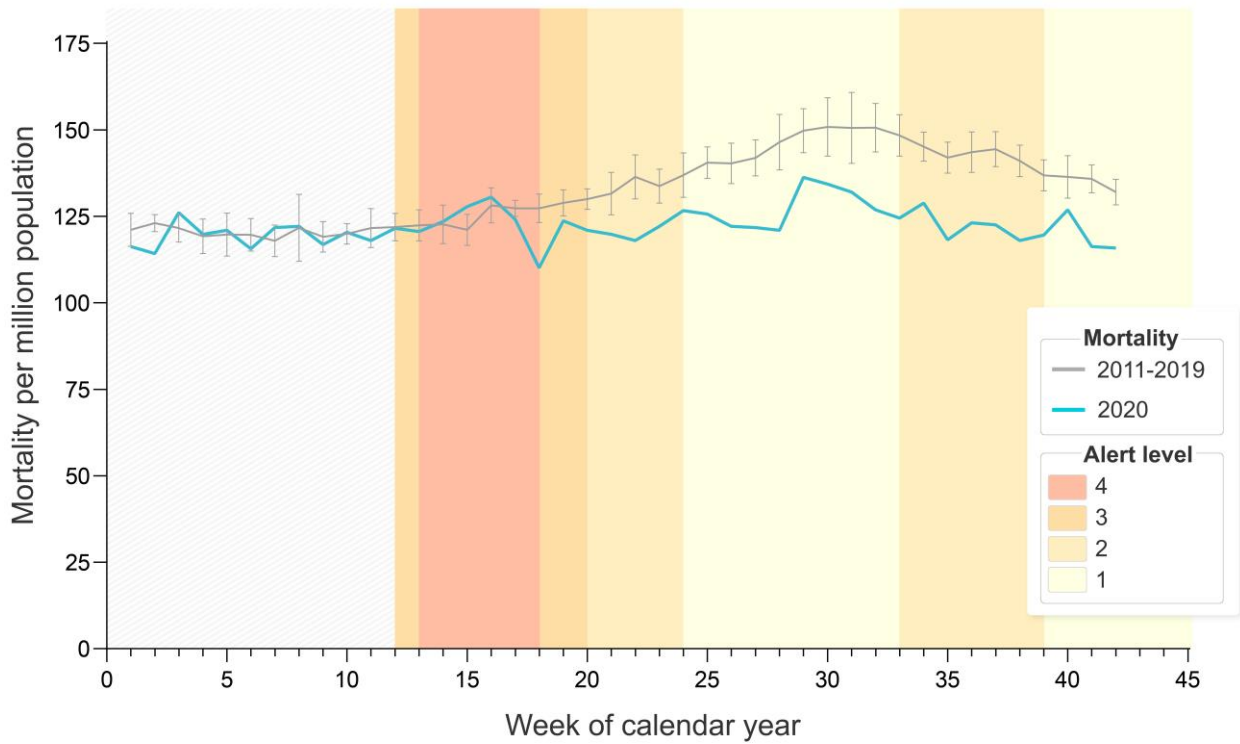


Supplementary Figure 1

Weekly all-cause mortality rates are presented per million population for each calendar week. Data from 2015-2019 are shown as mean with 95% confidence interval (calculated using GraphPad Prism 8.3.1). Data for 2020 are provisional and subject to revision during the full process of producing death statistics. Mean weekly all-cause mortality was compared using unpaired t tests with Welch's correction. (There was no significant difference between mean weekly all-cause mortality across weeks 1-12 between 2020 and 2015-2019 (119.5 vs 121.0 deaths per million population, $p=0.24$) but mean all-cause mortality across weeks 13-42 in 2020 was significantly lower than 2015-2019 (123.5 vs 138.5, $p<0.001$).

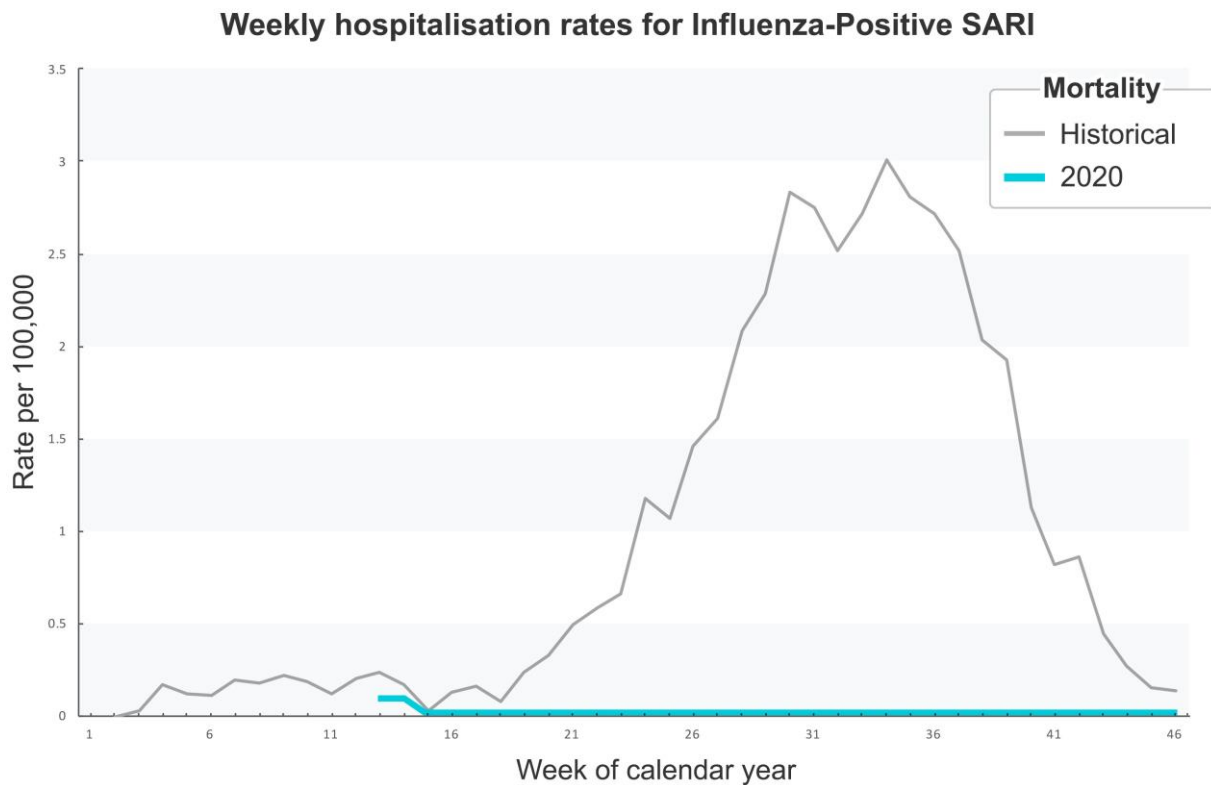
The national alert level in place for the majority of the week is shown but sub-national alert level restrictions are not. The Alert System outlines the current level of risk from COVID-19 and the restrictions that legally must be followed in New Zealand.

All-cause mortality in New Zealand by week



Supplementary Figure 2

Weekly all-cause mortality rates are presented per million population for each calendar week. Data from 2011-2019 are shown as mean with 95% confidence interval (calculated using GraphPad Prism 8.3.1). Data for 2020 are provisional and subject to revision during the full process of producing death statistics.



Supplementary Figure 3

New Zealand weekly hospitalisation rates for Influenza-positive Severe Acute Respiratory Infections (SARI) are presented per 100 000 for each calendar week. Data on hospitalisations are from the Institute of Environmental Science and Research (ESR). Historical data is from 2012-2016, where surveillance was conducted all year (instead of from week 13 in 2020) for the Southern Hemisphere Influenza and Vaccine Effectiveness Research and Surveillance (SHIVERS) project. In 2020, national influenza surveillance began earlier than scheduled (March 16th) due to COVID-19.

Acknowledgement: The authors would like to acknowledge Dr.Ciléin Kearns for the figures and data visualisation.