

SUPPLEMENTAL MATERIAL

Figure I: Effect of dapagliflozin on the primary and secondary outcomes in DAPA-HF according eGFR group at baseline (*rate ratio and N provided for total hospitalizations or CV death outcome).

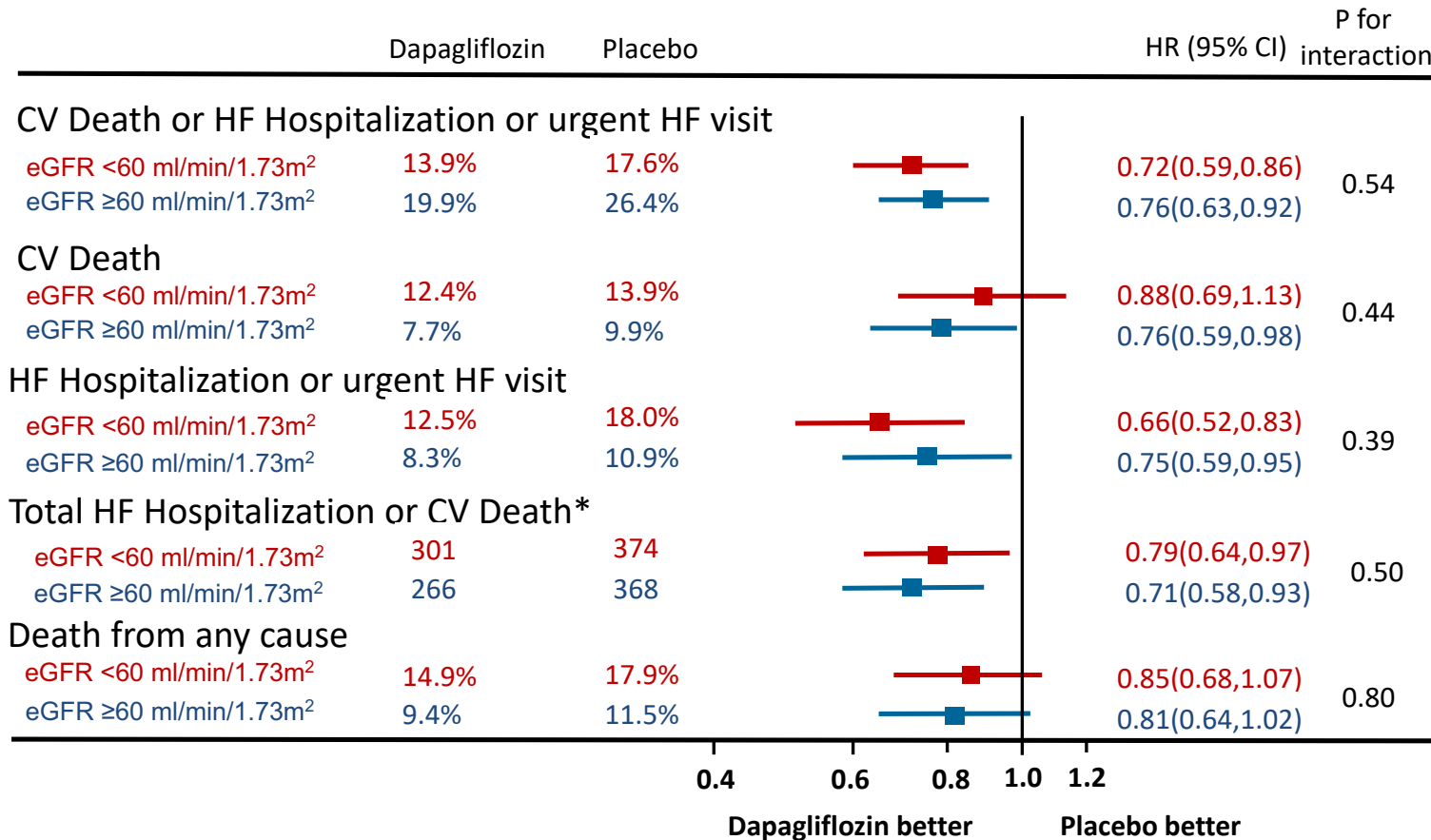


Figure II – Effect of dapagliflozin on secondary outcomes in DAPA-HF by baseline eGFR A. CV death B. HF hospitalization/Urgent HF visit C. All cause death

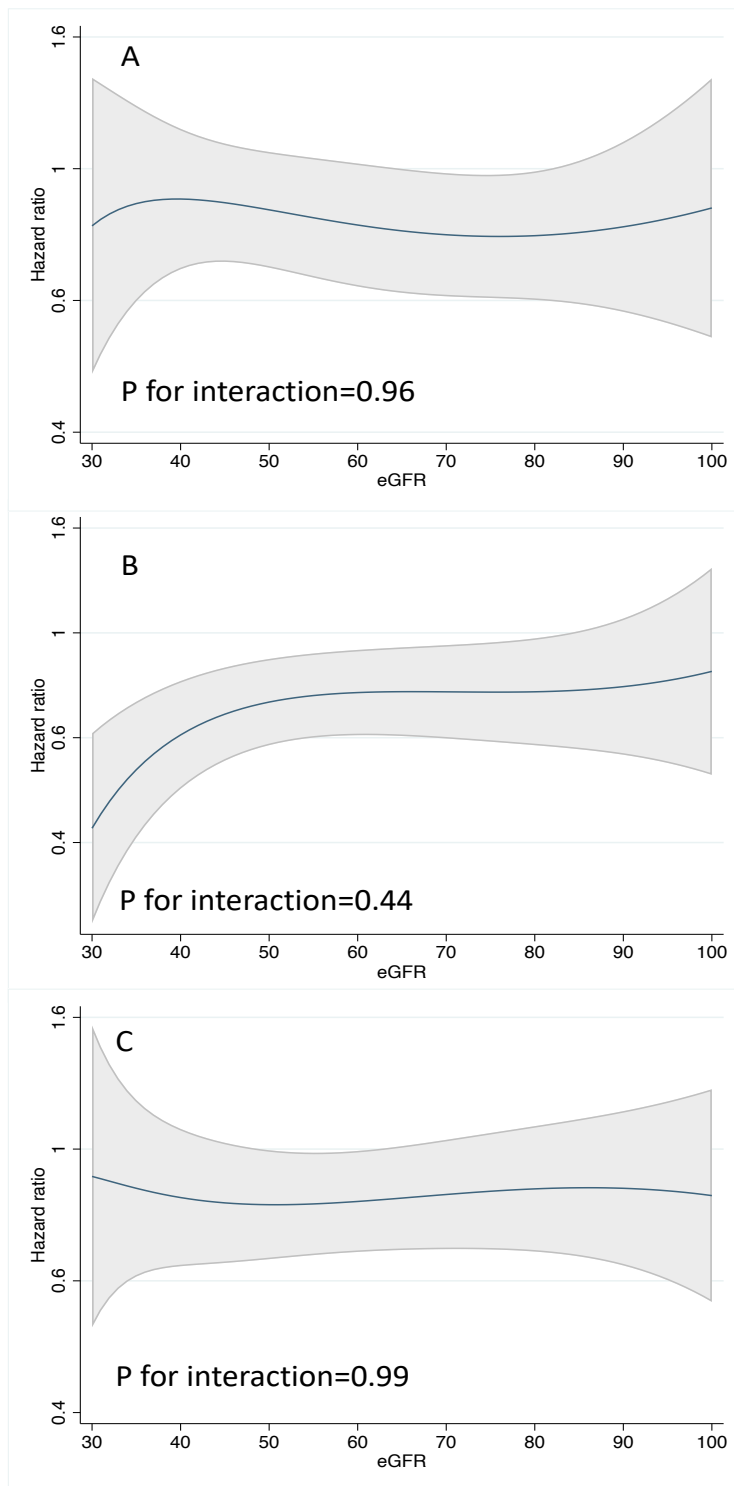
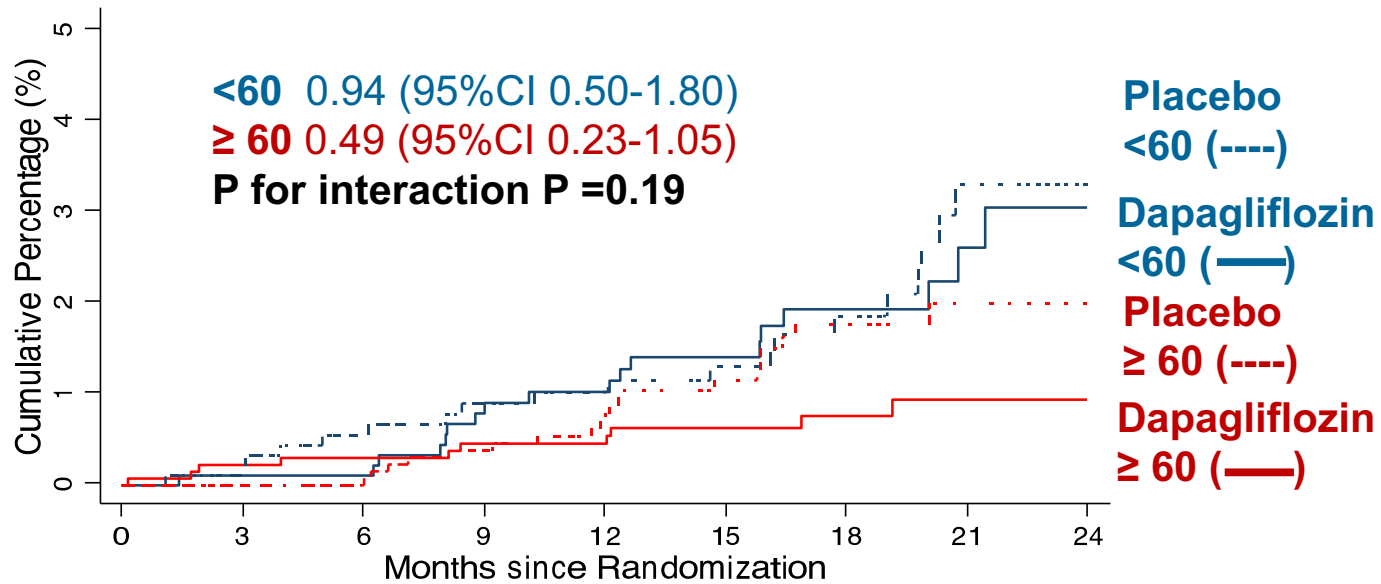
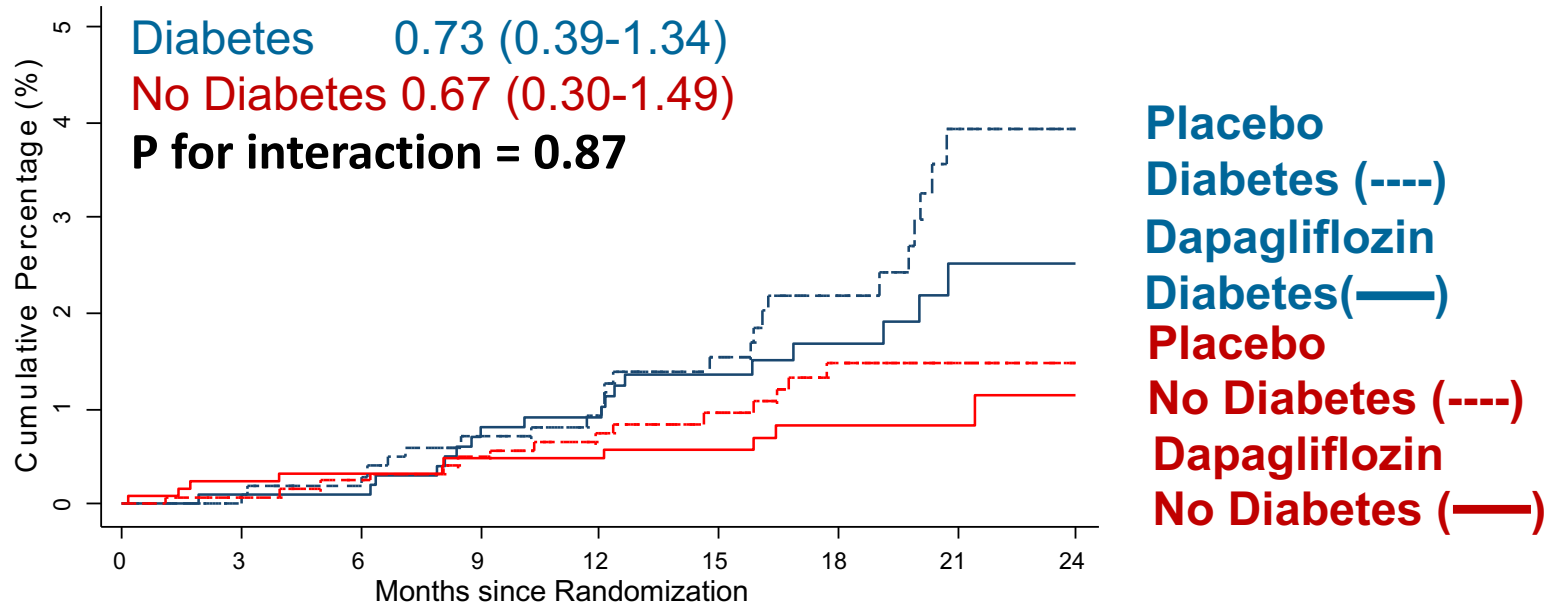


Figure III Kaplan Meier estimates of the effect of dapagliflozin on the renal composite endpoint by baseline CKD status



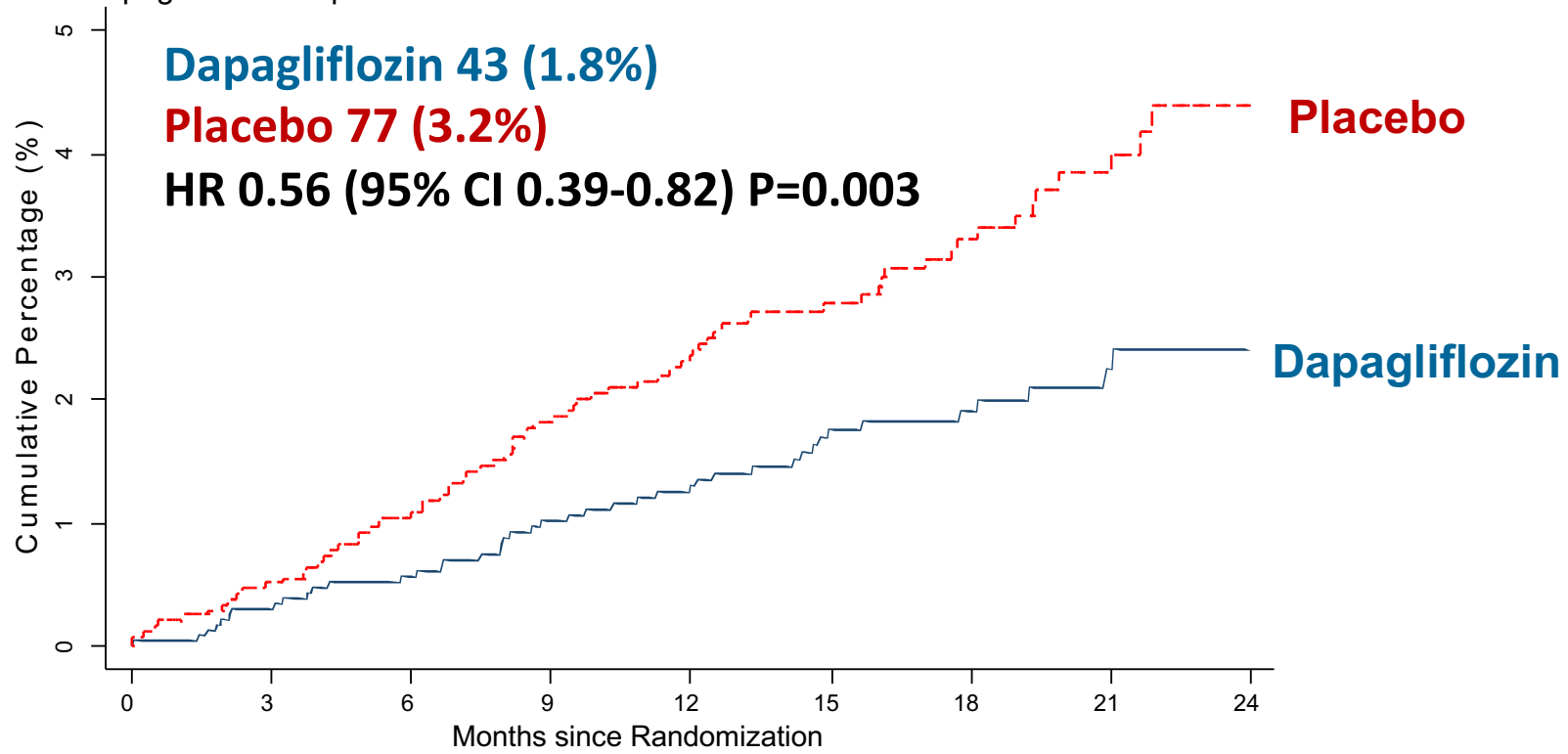
Number at Risk	0	3	6	9	12	15	18	21	24
Dapagliflozin <60	962	931	897	855	795	632	460	248	84
Dapagliflozin ≥60	1410	1363	1329	1286	1213	938	693	374	139
Placebo <60	964	914	875	837	776	625	472	262	91
Placebo ≥60	1406	1362	1325	1280	1199	912	660	338	124

Figure IV Kaplan Meier estimates of the effect of dapagliflozin on the renal composite endpoint by baseline diabetes status



Number at Risk		0	3	6	9	12	15	18	21	24
Dapagliflozin Diabetes	1075	1042	1013	969	900	696	511	276	103	
Dapagliflozin No Diabetes	1297	1252	1213	1172	1108	874	642	346	120	
Placebo Diabetes	1064	1028	991	935	861	674	493	255	92	
Placebo No Diabetes	1306	1248	1209	1182	1114	863	639	345	123	

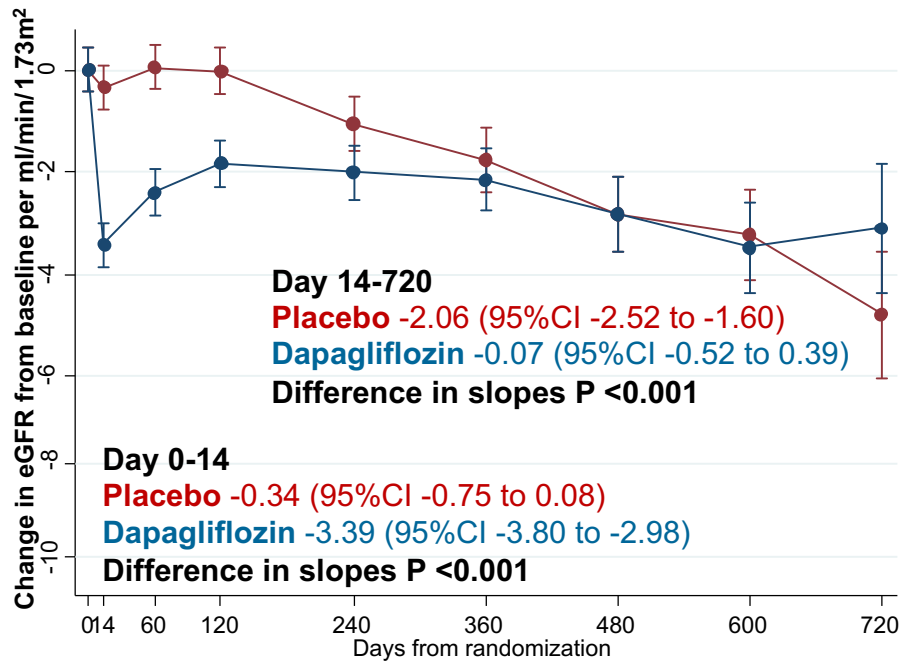
Figure V. Kaplan Meier estimate of pre-specified outcome of doubling of serum creatinine from previous measurement in patients randomized to dapagliflozin and placebo



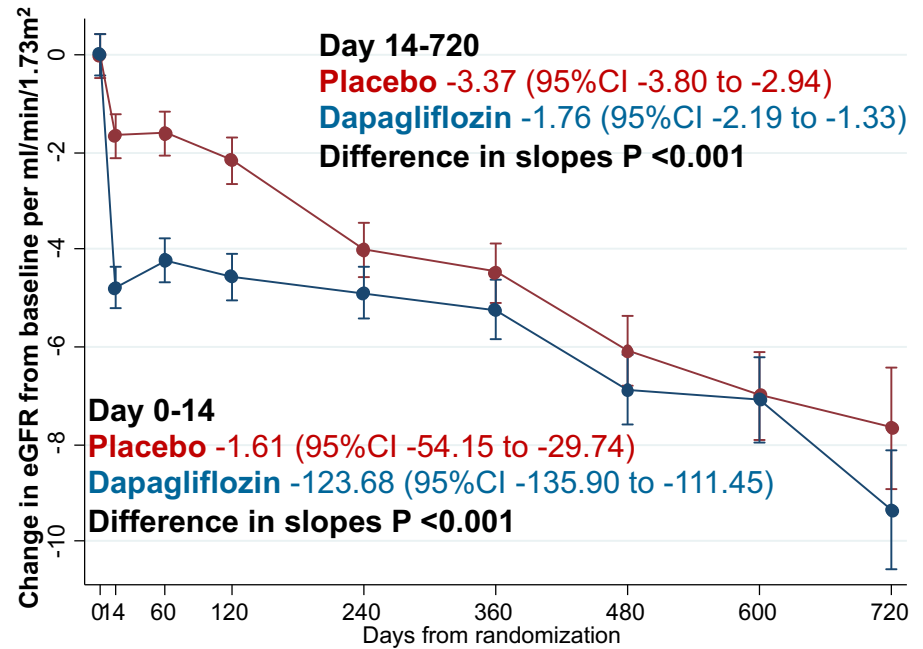
Number at Risk

Dapagliflozin	2373	2290	2221	2136	2002	1566	1152	622	222
Placebo	2371	2267	2189	2105	1957	1522	1122	599	215

Figure VI: Effect of dapagliflozin on change in eGFR over time (slope per ml/min/1.73m² per year) by baseline eGFR group in DAPA-HF.



eGFR <60 at Baseline



eGFR ≥60 at Baseline

P for interaction = 0.94