

THE LANCET

Infectious Diseases

Supplementary appendix

This appendix formed part of the original submission and has been peer reviewed. We post it as supplied by the authors.

Supplement to: Authors. Limitations of using mobile phone data to model COVID-19 transmission in the USA. *Lancet Infect Dis* 2020; published online Nov 2. [https://doi.org/10.1016/S1473-3099\(20\)30861-6](https://doi.org/10.1016/S1473-3099(20)30861-6).

Supplementary Appendix

Limitations of using mobile phone data to model COVID-19 transmission in the USA

Hamada S. Badr, PhD

Department of Earth and Planetary Sciences, Johns Hopkins University (JHU)

3400 N. Charles Street, Olin Hall, Baltimore, MD, 21218, USA

badr@jhu.edu

Lauren M. Gardner, PhD*

Department of Civil and Systems Engineering, Johns Hopkins University (JHU)

3400 N. Charles Street, Olin Hall, Baltimore, MD, 21218, USA

l.gardner@jhu.edu

* Corresponding author at: JHU, 3400 N. Charles Street, Latrobe 104, Baltimore, MD, 21218, USA. *E-mail address:* l.gardner@jhu.edu (Lauren M. Gardner).

Key Words: COVID-19; SARS-CoV-2; Mobile Phone Data; Transmission; Risk

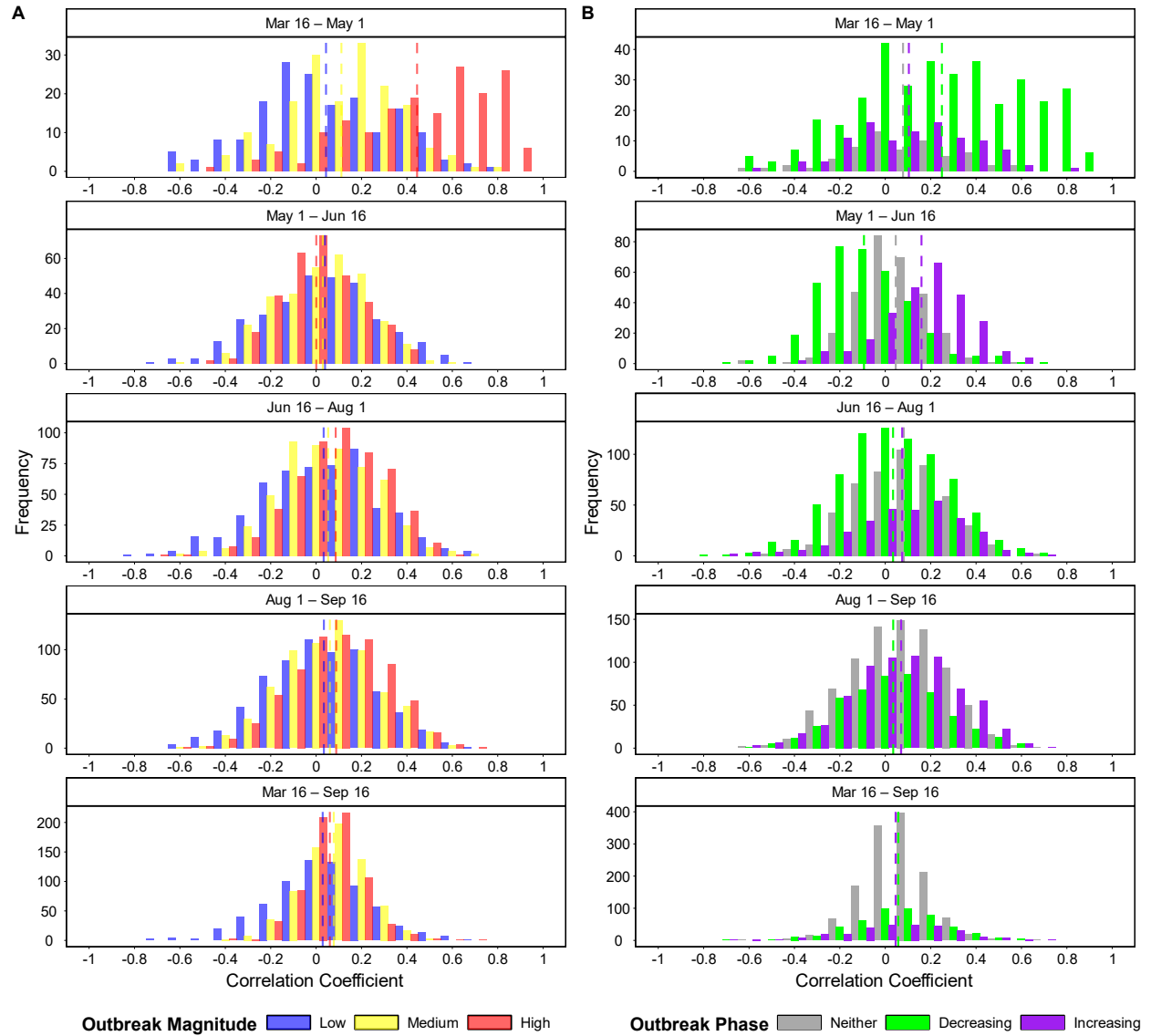


Figure 1 Histogram of MR-GR correlations at 11-day lag for different time periods. Counties are split into three equally-sized groups based on A) the total number of newly reported cases during each time period evaluated, or B) the linear trend of GR within each time period: GR with a linear slope of greater than 0.001 is increasing, below -0.001 is decreasing, and in the range from -0.001 to 0.001 is classified as neither. Vertical dashed lines represent the mean of each group. Counties that have a sample size of less than 10 days are excluded from the analysis.