

THE LANCET

Supplementary appendix

This appendix formed part of the original submission. We post it as supplied by the authors.

Supplement to: Hoffmann C, Wolf E. SARS-CoV-2 seroprevalence in Spain. *Lancet* 2020; **396**: 1484.

Appendix

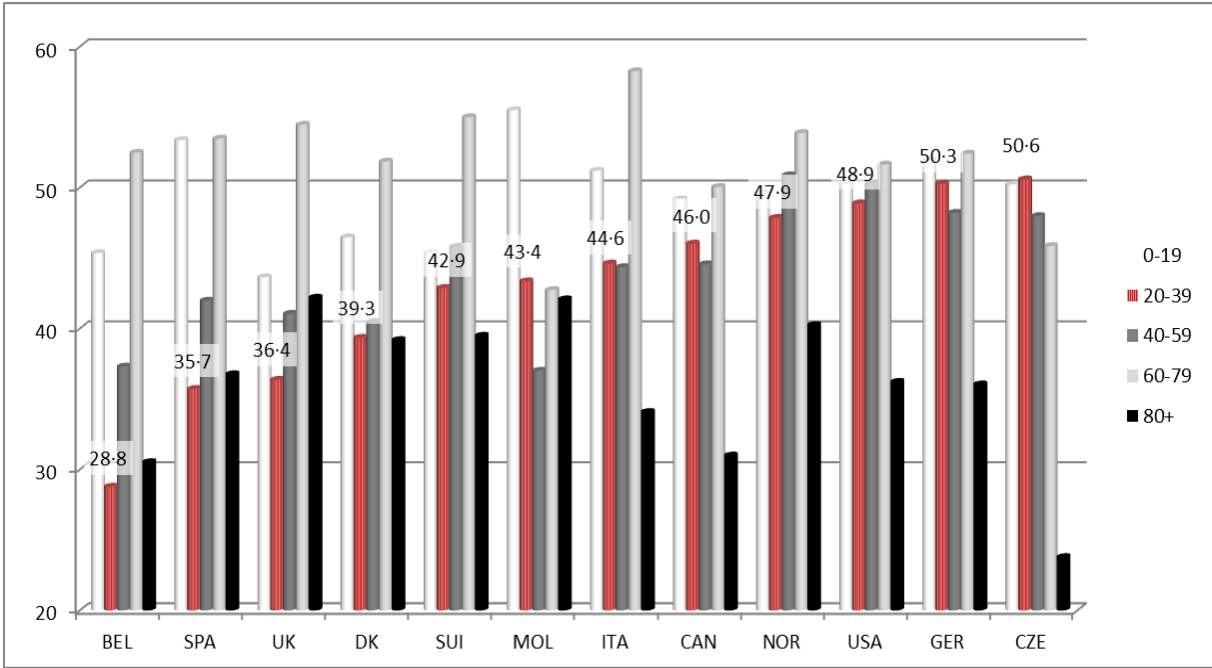


Figure 1. Proportion of males among confirmed SARS-CoV-2 cases in five different age groups among the most severely affected countries in Europe, providing data on the gender distribution at different age strata. The numbers indicate the percentage of males among the group of 20–39 years of age.

Note: Estimates according to websites of national health authorities of the most affected European countries, USA and Canada, reporting age distribution among confirmed cases on July 6, 2020, namely Belgium (epistat.wiv-isp.be/covid/covid-19.html, date of last age data reporting Jul 6), United Kingdom (coronavirus.data.gov.uk, Jun 30), Denmark (sst.dk/en/English/Corona-eng, Jul 6), Switzerland (bag.admin.ch/bag/de/home, Jul 6), Moldova (gismoldova.maps.arcgis.com, Jul 6), Italy (epicentro.iss.it, June 23), Canada (canada.ca, Jun 30), Norway (fhi.no, Jul 6), USA¹, Germany (rki.de, Jul 6), and the Czech Republic (onemocneni-aktualne.mzcr.cz, Jul 6).

1 Stokes EK, Zambrano LD, Anderson KN, Marder EP, Raz KM, Felix SE, et al. Coronavirus Disease 2019 Case Surveillance — United States, January 22–May 30, 2020. *MMWR Morb Mortal Wkly Rep.* 2020;69:759–765.