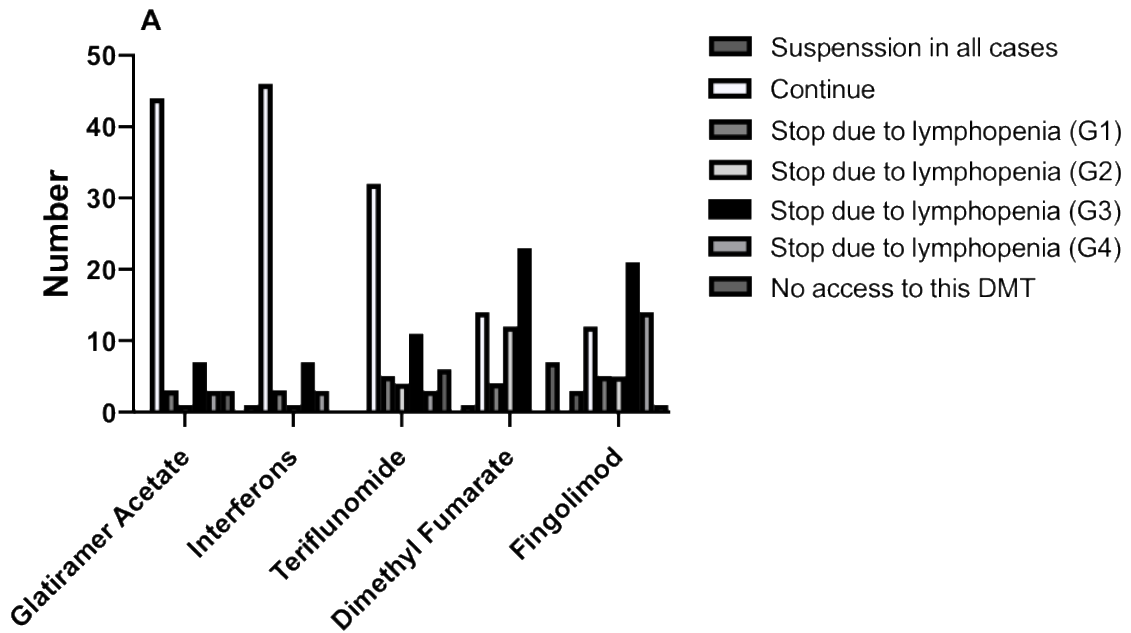


Supplementary Figure 1. Treatment continuation in MS patients without COVID-19



Supporting information about S1 Figure.

(A) Analysis of decision-making in treatment continuation in MS patients without COVID-19, responses were stratified taking into account the potential risk of severe COVID-19 infection associated with DMTs

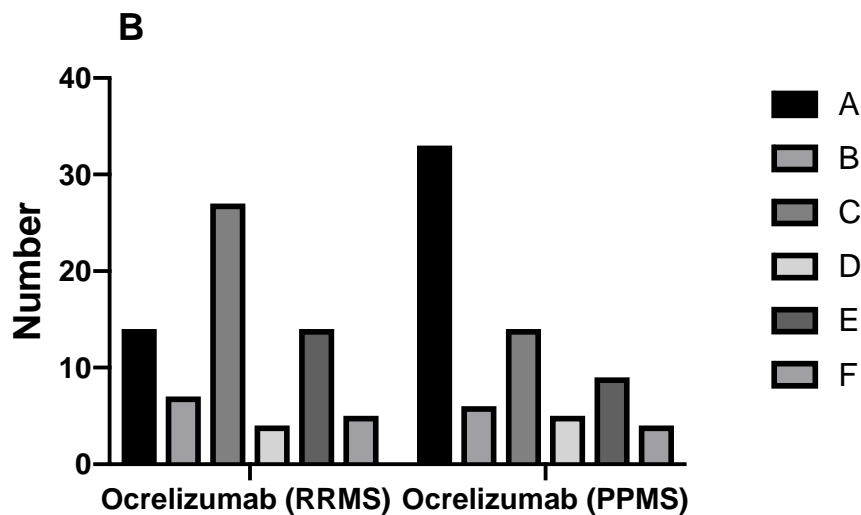
Treatment interruption in all cases

Treatment continuation in all cases

Treatment interruption only in patients with grade 1 lymphopenia or worse. Treatment

interruption only in patients with grade 2 lymphopenia or worse Treatment interruption only in patients with grade 3 lymphopenia or worse

Treatment interruption only in patients with grade 4 lymphopenia do not have access to this therapy in my professional practice



A-Postpone next dose in all cases.

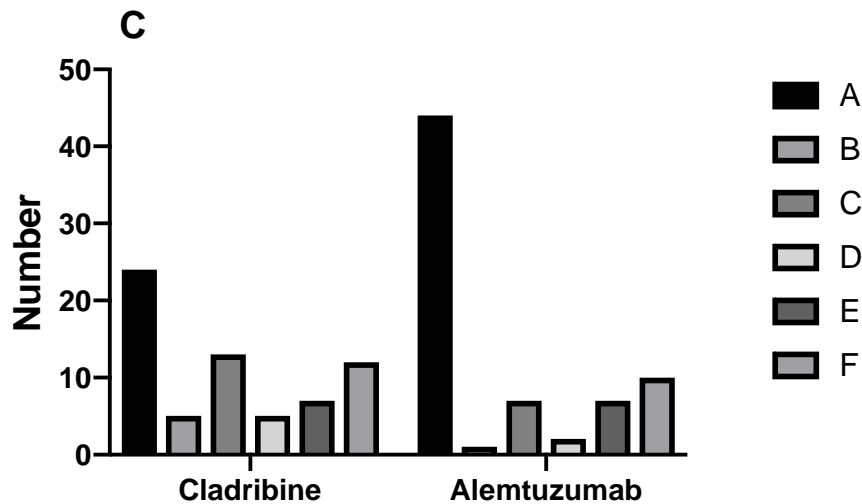
B-Continue with usual schedule in all cases.

C-Continue with usual schedule only in patients with high disease activity, regardless of CD19 CD20 value, because they are considered not useful for decision making.

D-Continue with usual schedule only in patients with high disease activity, regardless of CD19 CD20 value, because of lack of test availability.

E-Continue with usual schedule only in patients with high disease activity, depending on CD 19 CD 20 value.

F-I do not have access to this therapy in my professional practice.



A-Postpone next dose in all cases. Posponer la dosis siguiente del tratamiento en todos los casos

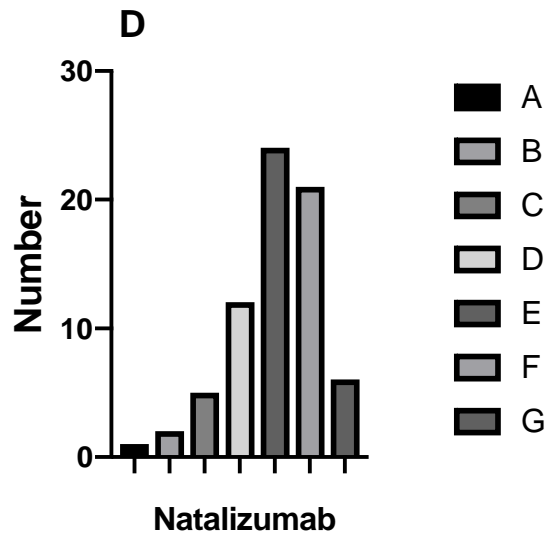
B-Continue with usual schedule in all cases.

C-Continue with usual schedule only in patients with high disease activity, regardless of CD4 CD8 value, because they are considered not useful for decision making.

D-Continue with usual schedule only in patients with high disease activity, regardless of CD4 CD8 value, because of lack of test availability.

E-Continue with usual schedule only in patients with high disease activity, depending on CD4 CD8 value.

F-I do not have access to this therapy in my professional practice.



A-Treatment interruption in all cases

B-Treatment interruption only in patients with clinical stability for longer than a year, the rest of cases continue with usual schedule.

C-Treatment interruption only in patients with clinical stability for longer than a year, the rest of cases continue with extended interval doses.

D-Continue with usual schedule, regardless of disease activity and amount of received infusions.

E-Continue with extended Interval doses, regardless of disease activity and amount of received infusions

F-Continue with usual schedule in patients who are in their first year of treatment and extended interval doses in patients who received more than 12 doses.

G-I do not have access to this therapy in my professional practice.