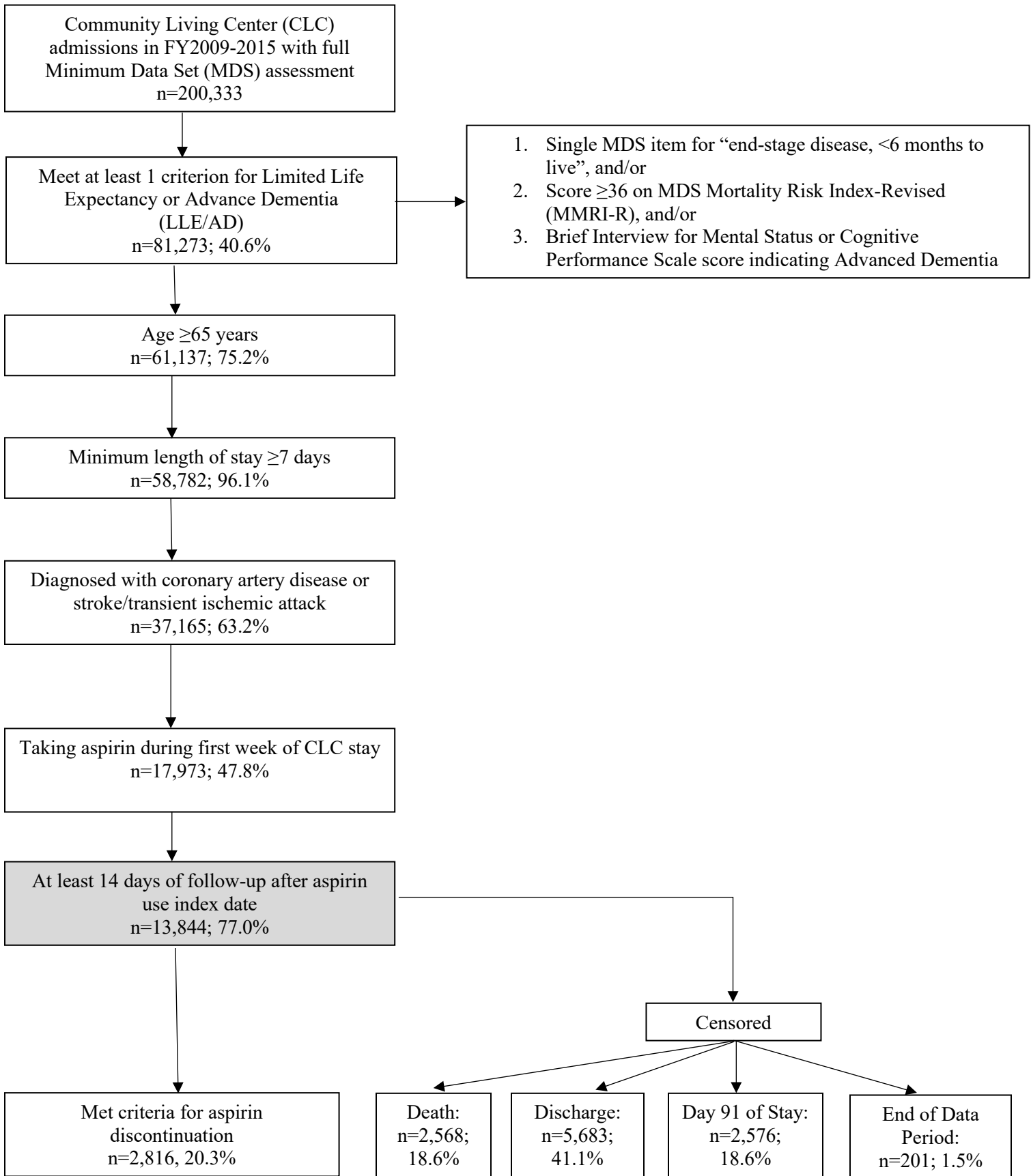
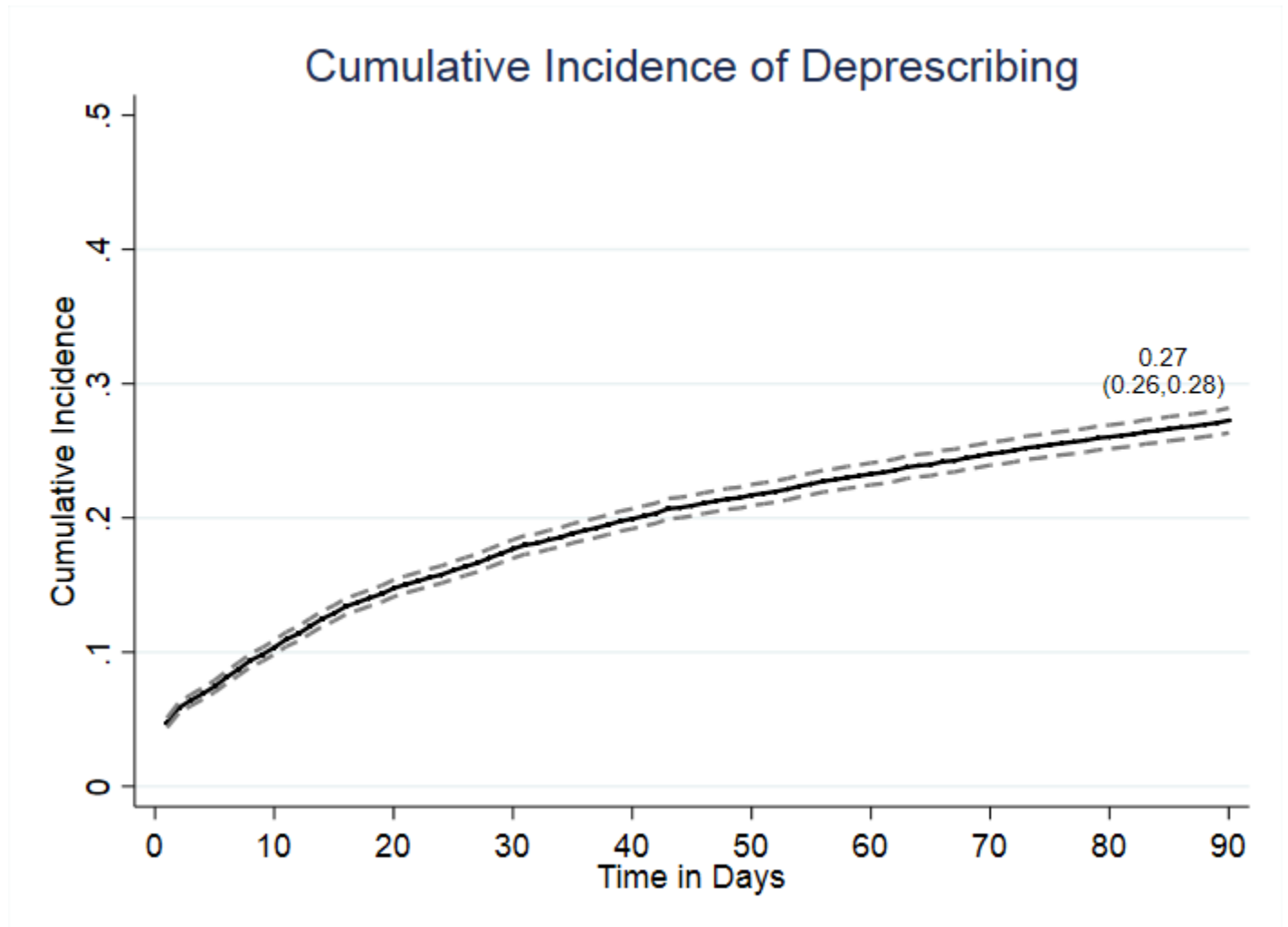


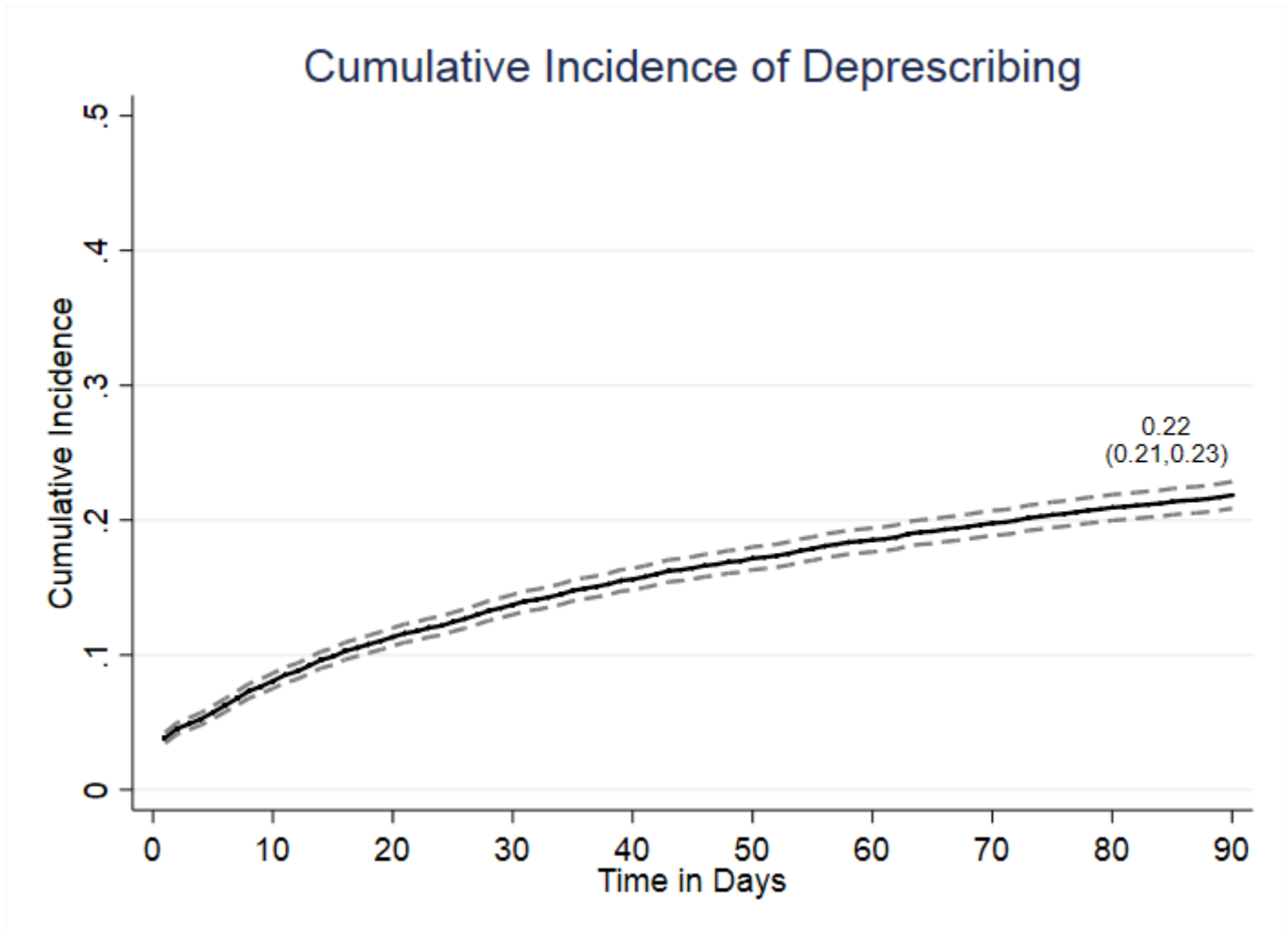
**Supplementary Figure S-1. Construction of the study sample.**



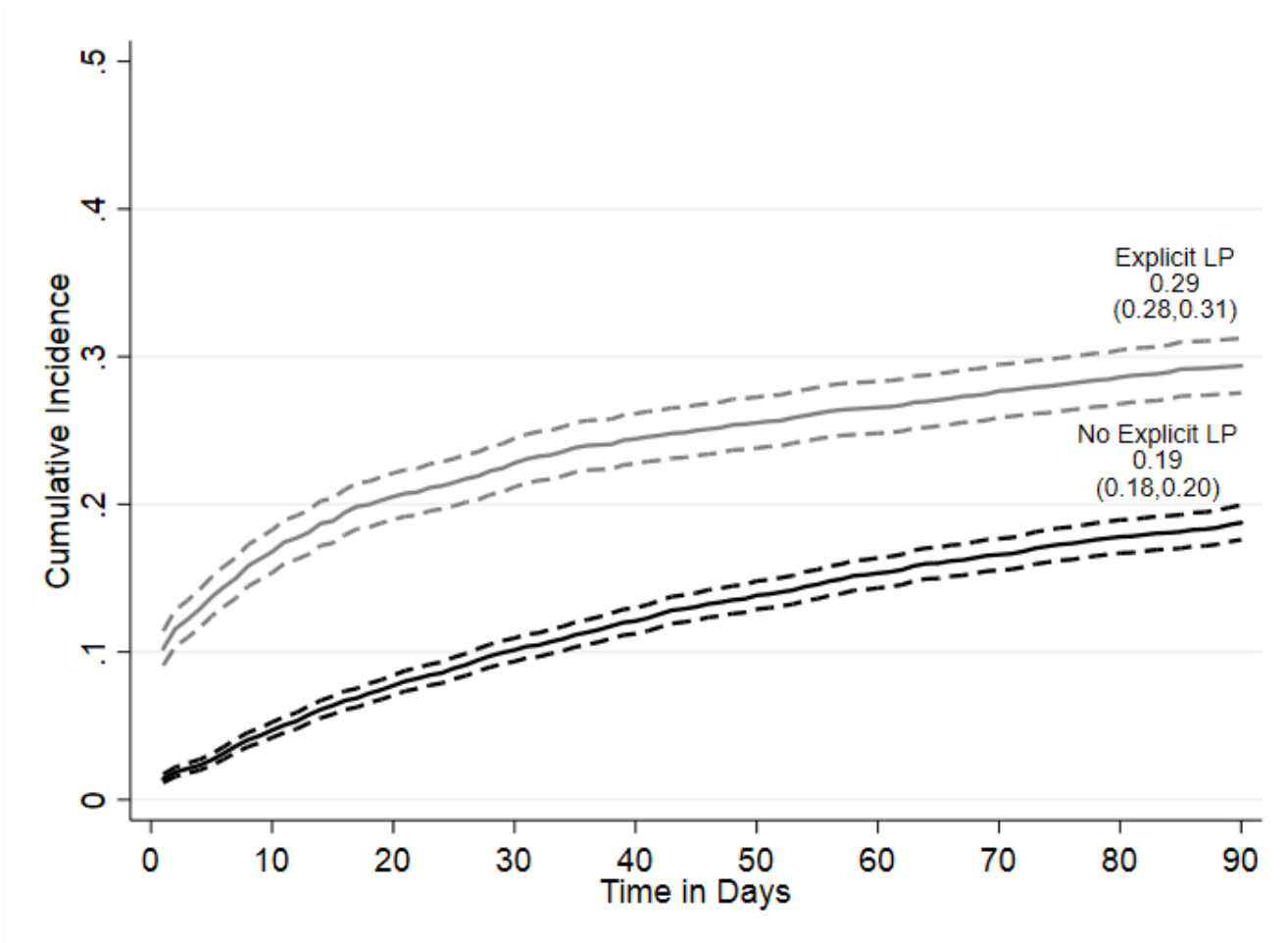
Supplementary Figure S-2. Cumulative incidence of aspirin discontinuation, using primary discontinuation definition requiring a 14-day gap in use (N=13,844).



Supplementary Figure S-3. Cumulative incidence of aspirin discontinuation, using alternative definition requiring a 30-day gap in use (n=9,430).



Supplementary Figure S-4. Cumulative incidence of aspirin discontinuation, using alternative discontinuation variable requiring a 30-day gap in use, stratified by explicit documentation of limited prognosis (LP) at admission (N=9,430).



**Supplementary Table S-1: Primary analyses of multivariable subdistribution hazard ratios (SDHRs) for predictors of discontinuation of aspirin, stratified by explicit documentation of limited prognosis at admission (n=13,844), using discontinuation variable requiring 14-day gap in use**

	Explicit Documentation of Limited Prognosis n=4,092	No Explicit Documentation of Limited Prognosis n=9,752
<b>Demographics</b>	<b>aSDHR (95% CI)</b>	<b>aSDHR (95% CI)</b>
<b>Age at admission</b>		
65-74	Ref	Ref
75-84	0.91 (0.78-1.06)	0.93 (0.83-1.05)
≥85	0.83 (0.71-0.97)*	0.98 (0.86-1.13)
<b>Sex</b>		
Female	1.06 (0.71-1.58)	0.88 (0.49-1.60)
<b>Race/ethnicity</b>		
White	Ref	Ref
Black	1.20 (1.01-1.44)*	0.94 (0.82-1.09)
Hispanic	1.32 (0.97-1.79)	1.49 (1.16-1.91)**
Other	1.27 (0.86-1.89)	1.27 (0.95-1.69)
<b>Marital status</b>		
Married	1.09 (0.92-1.30)	1.05 (0.89-1.23)
<b>Environment of Care Factors</b>		
<b>Fiscal year of admission</b>		
2009	Ref	Ref
2010	1.23 (1.00-1.52)	1.05 (0.87-1.26)
2011	1.17 (0.92-1.50)	0.86 (0.72-1.03)
2012	1.65 (1.25-2.17)**	1.08 (0.89-1.29)
2013	1.23 (0.95-1.58)	0.98 (0.80-1.19)
2014	1.24 (0.92-1.67)	1.11 (0.90-1.37)
2015	1.37 (1.01-1.85)*	1.12 (0.90-1.39)
<b>Admission source</b>		
Acute hospital	Ref	Ref
Community	0.70 (0.58-0.84)**	0.80 (0.68-0.93)**
Nursing home	0.71 (0.53-0.96)*	0.66 (0.50-0.87)**
Other	0.72 (0.52-1.00)	0.93 (0.64-1.35)
<b>Hospitalization in 90 days prior to admission</b>	1.02 (0.90-1.16)	1.00 (0.90-1.11)
<b>Next of kin relationship to the Veteran‡</b>		
Spouse	Ref	Ref
Child	1.17 (0.98-1.39)	1.03 (0.87-1.22)
Sibling	0.94 (0.73-1.20)	0.95 (0.76-1.19)
Other relative	1.20 (0.93-1.55)	0.95 (0.67-1.33)
Friend or other specified person of unknown relation	1.09 (0.81-1.45)	0.97 (0.75-1.25)

<b>Distance from next of kin ZIP code centroid to the CLC<sup>‡</sup></b>		
Quartile 1	Ref	Ref
Quartile 2	1.06 (0.92-1.22)	0.97 (0.85-1.09)
Quartile 3	1.01 (0.86-1.19)	1.03 (0.90-1.17)
Quartile 4	0.95 (0.80-1.14)	0.91 (0.79-1.04)
<b>Facility Factors</b>		
<b>US Census region of the CLC</b>		
Northeast	Ref	Ref
Midwest	1.15 (0.86-1.55)	1.03 (0.84-1.27)
South	1.17 (0.89-1.54)	1.16 (0.94-1.44)
West	1.45 (1.07-1.96)*	1.32 (1.00-1.74)*
<b>Urban Influence Code for the CLC</b>		
Large metro	Ref	Ref
Small metro	1.07 (0.80-1.42)	1.00 (0.82-1.22)
Micropolitan	1.32 (0.95-1.82)	1.23 (0.94-1.61)
Noncore rural	0.44 (0.28-0.70)**	1.16 (0.82-1.64)
<b>Complexity Level of the parent station</b>		
1a (Highest)	Ref	Ref
1b	0.68 (0.51-0.91)**	1.05 (0.84-1.30)
1c	0.70 (0.51-0.97)*	0.90 (0.74-1.10)
2	0.83 (0.57-1.19)	0.95 (0.74-1.22)
3 (Least Complex)	0.80 (0.55-1.15)	1.03 (0.80-1.33)
<b>Bed Size of CLC</b>		
>120 beds	Ref	Ref
60-120 beds	0.89 (0.69-1.14)	0.90 (0.73-1.10)
<60 beds	0.84 (0.67-1.06)	0.79 (0.66-0.95)*
<b>Physician turnover rate</b>		
Quartile 1	Ref	Ref
Quartile 2	1.03 (0.83-1.27)	0.90 (0.76-1.07)
Quartile 3	1.08 (0.87-1.33)	0.95 (0.81-1.12)
Quartile 4	1.07 (0.85-1.35)	0.89 (0.75-1.05)
<b>Nurse turnover rate</b>		
Quartile 1	Ref	Ref
Quartile 2	0.93 (0.73-1.18)	0.92 (0.78-1.09)
Quartile 3	0.87 (0.65-1.17)	0.84 (0.70-1.02)
Quartile 4	0.81 (0.61-1.08)	0.76 (0.60-0.97)*
<b>Pharmacist turnover rate</b>		
Quartile 1	Ref	Ref
Quartile 2	1.05 (0.86-1.28)	0.86 (0.71-1.04)
Quartile 3	1.20 (0.99-1.44)	0.89 (0.75-1.06)
Quartile 4	1.20 (0.99-1.44)	0.93 (0.78-1.10)

<b>Practical nurse turnover</b>		
Quartile 1	Ref	Ref
Quartile 2	1.29 (1.05-1.59)*	1.04 (0.87-1.24)
Quartile 3	1.28 (1.03-1.59)*	1.09 (0.92-1.30)
Quartile 4	1.19 (0.94-1.49)	1.13 (0.96-1.35)
<b>Psychology Turnover</b>		
Quartile 1	Ref	Ref
Quartile 2	1.28 (1.04-1.58)*	0.97 (0.81-1.15)
Quartile 3	1.10 (0.87-1.39)	0.81 (0.69-0.94)**
Quartile 4	0.89 (0.72-1.12)	0.73 (0.60-0.89)**
<b>Cardiovascular Risk Factors</b>		
<b>Number of qualifying conditions (coronary artery disease, stroke/transient ischemic attack)</b>		
1	Ref	Ref
2	0.86 (0.72-1.03)	0.93 (0.81-1.08)
<b>Diabetes</b>	0.86 (0.77-0.97)*	0.87 (0.78-0.96)**
<b>Congestive heart failure</b>	0.88 (0.78-0.99)*	1.13 (1.01-1.26)*
<b>Hypertension</b>	1.17 (0.93-1.46)	0.82 (0.66-1.02)
<b>Hyperlipidemia</b>	0.99 (0.88-1.12)	0.96 (0.86-1.07)
<b>Venous Thromboembolism</b>	0.95 (0.79-1.14)	1.25 (1.09-1.43)**
<b>Atrial Fibrillation</b>	0.89 (0.78-1.02)	1.11 (0.96-1.29)
<b>Recent stroke</b>	0.95 (0.79-1.14)	1.04 (0.89-1.21)
<b>Recent myocardial infarction (MI)</b>	0.91 (0.73-1.13)	0.64 (0.52-0.79)**
<b>Current Smoker</b>	1.02 (0.83-1.26)	1.21 (1.01-1.45)*
<b>Body Mass Index</b>		
Normal or healthy weight (18.5 to <25.0)	Ref	Ref
Underweight (<18.5)	1.02 (0.86-1.20)	1.15 (0.95-1.40)
Overweight (25.0 to <30.0)	1.14 (0.99-1.31)	1.07 (0.94-1.21)
Obese (≥30)	1.06 (0.88-1.28)	0.99 (0.86-1.13)
<b>Markers of poor prognosis</b>		
<b>Number of Elixhauser comorbidities</b>		
0-1	Ref	Ref
2-3	1.34 (1.03-1.76)*	1.15 (0.91-1.45)
4-5	1.39 (1.05-1.84)*	1.03 (0.82-1.29)
>5	1.50 (1.12-2.00)**	1.17 (0.92-1.50)
<b>Advanced dementia</b>	1.17 (1.02-1.34)*	0.92 (0.79-1.06)
<b>Recent weight loss</b>	1.08 (0.96-1.21)	1.14 (1.01-1.28)*
<b>Poor appetite</b>	1.16 (1.03-1.31)*	1.10 (0.99-1.23)
<b>Renal failure</b>	1.17 (1.00-1.37)*	1.19 (1.04-1.36)*
<b>Dehydration</b>	1.05 (0.63-1.77)	0.97 (0.57-1.65)
<b>Acute change in mental status</b>	1.08 (0.89-1.33)	1.18 (1.02-1.37)*

<b>Shortness of breath</b>	0.86 (0.76-0.97)*	1.10 (0.99-1.23)
<b>Cancer</b>	1.06 (0.94-1.19)	1.19 (1.06-1.34)**
<b>Swallowing Problems</b>	1.09 (0.96-1.25)	0.94 (0.83-1.08)
<b>IV feeding tube</b>	1.04 (0.84-1.30)	1.42 (1.20-1.68)**
<b>Mechanical diet</b>	1.04 (0.92-1.18)	1.04 (0.92-1.18)
<b>ADL score</b>		
0 - <1	Ref	Ref
1 to <2	1.09 (0.87-1.37)	0.88 (0.73-1.05)
2 to <3	1.27 (1.00-1.61)*	0.95 (0.79-1.14)
3 to <4	1.23 (0.96-1.59)	1.11 (0.92-1.34)
4	1.28 (0.96-1.71)	1.23 (0.97-1.56)
<b>Aggressive Behavior</b>		
None	Ref	Ref
Moderate	1.08 (0.89-1.30)	1.08 (0.93-1.26)
Severe	1.13 (0.89-1.43)	0.97 (0.76-1.25)
Very severe	0.99 (0.60-1.62)	1.19 (0.84-1.69)
<b>Presence of any pain</b>	1.05 (0.93-1.19)	0.99 (0.89-1.10)
<b>History of falls, hip fracture, and other fractures in past 180 days</b>	1.03 (0.93-1.13)	1.01 (0.91-1.12)
<b>Medications prescribed which may impact aspirin prescribing</b>		
Anti- platelet agents	0.86 (0.73-1.02)	0.99 (0.86-1.12)
Anti-thrombotic agents	1.04 (0.91-1.19)	1.13 (1.00-1.27)*
H-2 Receptor antagonists (H2Ras)	0.95 (0.79-1.15)	0.86 (0.72-1.04)
Proton pump inhibitors (PPIs)	1.15 (1.03-1.30)*	0.96 (0.86-1.08)
Non-steroidal anti-inflammatory drugs (NSAIDs)	1.02 (0.78-1.32)	0.95 (0.76-1.19)

\*p<0.05, \*\*p<0.01



Supplementary Table S-2: Sensitivity Analysis: Multivariable Subdistribution Hazard Ratios (SDHRs) from competing risk models assessing predictors of discontinuation of aspirin, by explicit documentation of limited prognosis (LP) at admission, using alternative discontinuation variable requiring 30-day gap in use (n=9,430).

	Explicit Documentation of Limited Prognosis n=2,593	No Explicit Documentation of Limited Prognosis n=6,837
<b>Demographics</b>	<b>aSDHR (95% CI)</b>	<b>aSDHR (95% CI)</b>
<b>Age at admission</b>		
65-74	Ref	Ref
75-84	0.95 (0.76-1.19)	0.93 (0.79-1.11)
≥85	0.84 (0.66-1.06)	0.97 (0.81-1.17)
<b>Sex</b>		
Female	0.87 (0.51-1.49)	1.08 (0.55-2.15)
<b>Race/ethnicity</b>		
White	Ref	Ref
Black	1.14 (0.90-1.45)	1.02 (0.86-1.22)
Hispanic	1.34 (0.88-2.04)	1.63 (1.22-2.17)**
Other	1.15 (0.69-1.94)	1.52 (1.11-2.08)**
<b>Marital status</b>		
Married	1.08 (0.87-1.34)	1.03 (0.84-1.26)
<b>Environment of Care Factors</b>		
<b>Fiscal year of admission</b>		
2009	Ref	Ref
2010	1.06 (0.78-1.44)	1.14 (0.92-1.40)
2011	1.08 (0.83-1.41)	0.75 (0.59-0.95)*
2012	1.32 (0.95-1.84)	1.20 (0.93-1.55)
2013	0.90 (0.65-1.25)	0.98 (0.75-1.29)
2014	1.08 (0.77-1.53)	1.09 (0.83-1.44)
2015	1.11 (0.78-1.58)	0.98 (0.74-1.30)
<b>Admission Source</b>		
Acute hospital	Ref	Ref
Community	0.78 (0.64-0.96)*	0.94 (0.77-1.13)
Nursing home	0.73 (0.52-1.03)	0.74 (0.52-1.05)
Other	0.69 (0.45-1.05)	0.98 (0.62-1.52)
<b>Hospitalization in 90 days prior to admission</b>	1.08 (0.90-1.31)	1.01 (0.88-1.16)
<b>Next of kin relationship to the Veteran‡</b>		
Spouse	Ref	Ref
Child	1.28 (1.01-1.64)*	1.02 (0.84-1.24)
Sibling	1.17 (0.83-1.66)	0.91 (0.70-1.19)
Other relative	0.86 (0.55-1.35)	0.97 (0.63-1.48)
Friend or other specified person of unknown relation	1.08 (0.73-1.60)	0.79 (0.55-1.14)

<b>Distance from next of kin ZIP code centroid to the CLC<sup>‡</sup></b>		
Quartile 1	Ref	Ref
Quartile 2	1.24 (1.04-1.47)*	0.96 (0.81-1.13)
Quartile 3	1.18 (0.96-1.44)	0.89 (0.76-1.05)
Quartile 4	0.91 (0.72-1.15)	0.84 (0.70-1.02)
<b>Facility Factors</b>		
<b>US Census region of the CLC</b>		
Northeast	Ref	Ref
Midwest	1.10 (0.79-1.52)	0.90 (0.70-1.17)
South	1.14 (0.86-1.51)	1.08 (0.86-1.36)
West	1.46 (1.03-2.07)*	1.19 (0.86-1.63)
<b>Urban Influence Code for the CLC</b>		
Large metro	Ref	Ref
Small metro	1.14 (0.81-1.60)	1.16 (0.94-1.43)
Micropolitan	1.48 (0.98-2.24)	1.29 (0.99-1.67)
Noncore rural	0.62 (0.34-1.15)	1.33 (0.75-2.36)
<b>Complexity Level of the parent station</b>		
1a (Highest)	Ref	Ref
1b	0.66 (0.46-0.96)*	0.97 (0.75-1.26)
1c	0.67 (0.45-0.99)*	0.81 (0.63-1.03)
2	0.91 (0.58-1.40)	0.83 (0.62-1.11)
3 (Least Complex)	0.76 (0.50-1.17)	0.88 (0.65-1.19)
<b>Bed Size of CLC</b>		
>120 beds	Ref	Ref
60-120 beds	0.89 (0.66-1.22)	0.85 (0.65-1.12)
<60 beds	0.91 (0.68-1.21)	0.76 (0.61-0.96)*
<b>Physician turnover rate</b>		
Quartile 1	Ref	Ref
Quartile 2	1.07 (0.85-1.34)	0.91 (0.72-1.14)
Quartile 3	1.08 (0.82-1.41)	1.04 (0.85-1.27)
Quartile 4	1.14 (0.87-1.49)	0.92 (0.74-1.14)
<b>Nurse turnover rate</b>		
Quartile 1	Ref	Ref
Quartile 2	0.85 (0.63-1.15)	0.86 (0.68-1.09)
Quartile 3	0.88 (0.62-1.23)	0.86 (0.68-1.10)
Quartile 4	0.80 (0.58-1.11)	0.77 (0.59-1.01)
<b>Pharmacist turnover rate</b>		
Quartile 1	Ref	Ref
Quartile 2	1.08 (0.84-1.38)	0.89 (0.69-1.16)
Quartile 3	1.30 (1.01-1.69)*	0.90 (0.70-1.14)
Quartile 4	1.14 (0.89-1.46)	0.99 (0.76-1.29)

<b>Practical nurse turnover</b>		
Quartile 1	Ref	Ref
Quartile 2	1.44 (1.11-1.87)**	1.05 (0.81-1.35)
Quartile 3	1.47 (1.13-1.91)**	1.09 (0.88-1.36)
Quartile 4	1.20 (0.86-1.66)	1.19 (0.95-1.48)
<b>Psychology Turnover</b>		
Quartile 1	Ref	Ref
Quartile 2	1.53 (1.18-1.99)**	0.89 (0.71-1.12)
Quartile 3	1.23 (0.95-1.61)	0.78 (0.63-0.98)*
Quartile 4	1.03 (0.79-1.35)	0.67 (0.51-0.86)**
<b>Cardiovascular Risk Factors</b>		
<b>Number of qualifying conditions (coronary artery disease, stroke/transient ischemic attack)</b>		
1	Ref	Ref
2	0.83 (0.65-1.06)	1.04 (0.85-1.26)
<b>Diabetes</b>	0.91 (0.79-1.05)	0.92 (0.81-1.05)
<b>Congestive heart failure</b>	0.87 (0.74-1.03)	1.10 (0.95-1.26)
<b>Hypertension</b>	1.15 (0.81-1.64)	0.78 (0.58-1.04)
<b>Hyperlipidemia</b>	1.04 (0.89-1.22)	0.91 (0.78-1.07)
<b>Venous Thromboembolism</b>	1.17 (0.94-1.45)	1.34 (1.11-1.63)**
<b>Atrial Fibrillation</b>	0.94 (0.76-1.16)	1.17 (0.98-1.40)
<b>Recent stroke</b>	0.93 (0.72-1.20)	0.91 (0.73-1.13)
<b>Recent myocardial infarction (MI)</b>	0.90 (0.68-1.18)	0.64 (0.47-0.89)**
<b>Current Smoker</b>	0.88 (0.68-1.15)	1.37 (1.07-1.74)*
<b>Body Mass Index</b>		
Normal or healthy weight (18.5 to <25.0)	Ref	Ref
Underweight (<18.5)	1.00 (0.80-1.25)	1.12 (0.87-1.43)
Overweight (25.0 to <30.0)	1.09 (0.89-1.33)	1.01 (0.85-1.20)
Obese (≥30)	1.08 (0.84-1.39)	1.06 (0.90-1.24)
<b>Factors indicating limited prognosis</b>		
<b>Number of Elixhauser conditions</b>		
0-1	Ref	Ref
2-3	1.57 (1.02-2.43)*	1.14 (0.82-1.59)
4-5	1.63 (1.10-2.41)*	1.08 (0.77-1.50)
>5	1.65 (1.08-2.52)*	1.17 (0.82-1.66)
<b>Advanced dementia</b>	1.19 (1.00-1.41)	0.83 (0.69-0.99)*
<b>Recent weight loss</b>	1.07 (0.90-1.27)	1.03 (0.89-1.21)
<b>Poor appetite</b>	1.37 (1.17-1.59)**	1.10 (0.97-1.25)
<b>Renal failure</b>	1.20 (1.01-1.43)*	1.03 (0.87-1.22)
<b>Dehydration</b>	0.87 (0.37-2.07)	0.64 (0.29-1.44)
<b>Acute change in mental status</b>	1.12 (0.82-1.52)	1.12 (0.88-1.43)

<b>Shortness of breath</b>	0.92 (0.78-1.09)	1.06 (0.89-1.26)
<b>Cancer</b>	1.19 (1.03-1.38)*	1.09 (0.91-1.30)
<b>Swallowing Problems</b>	1.14 (0.94-1.37)	0.98 (0.82-1.16)
<b>IV feeding tube</b>	0.96 (0.69-1.33)	1.43 (1.16-1.76)**
<b>Mechanical diet</b>	0.98 (0.84-1.14)	0.99 (0.84-1.18)
<b>Activities of Daily Living (ADL) score</b>		
0 - <1	Ref	Ref
1 to <2	1.41 (1.06-1.89)*	0.94 (0.73-1.22)
2 to <3	1.71 (1.26-2.33)**	1.07 (0.82-1.41)
3 to <4	1.50 (1.06-2.12)*	1.17 (0.88-1.56)
4	1.68 (1.10-2.56)*	1.29 (0.92-1.80)
<b>Aggressive Behavior</b>		
None	Ref	Ref
Moderate	0.88 (0.68-1.15)	0.92 (0.76-1.12)
Severe	1.18 (0.87-1.60)	1.02 (0.76-1.37)
Very severe	0.70 (0.30-1.60)	0.91 (0.54-1.54)
<b>Presence of any pain</b>	1.04 (0.88-1.23)	0.97 (0.83-1.13)
<b>History of falls, hip fracture, and other fractures in past 180 days</b>	0.98 (0.84-1.15)	1.06 (0.91-1.23)
<b>Medications prescribed which may impact aspirin prescribing</b>		
Anti- platelet agents	0.89 (0.70-1.12)	1.00 (0.85-1.18)
Anti-thrombotic agents	1.18 (0.99-1.41)	1.09 (0.94-1.27)
H-2 Receptor antagonists (H2Ras)	0.90 (0.71-1.14)	1.03 (0.81-1.30)
Proton pump inhibitors (PPIs)	1.03 (0.89-1.19)	0.96 (0.83-1.11)
Non-steroidal anti-inflammatory drugs (NSAIDs)	1.02 (0.69-1.52)	1.08 (0.80-1.45)

\*p<0.05, \*\*p<0.01

Supplementary Table S-3: Staff Turnover Rate for Sample, Stratified by Explicit Documentation of Limited Prognosis

	Full Sample (n=13,844) n (%)	Explicit Documentaiton of Limited Prognosis/Hospice (n=4,092) n (%)	No Explicit Documentation of Limited Prognosis/Hospice (n=9,752) n (%)
<b>Physician turnover rate**</b>			
Quartile 1	3,479 (25.1)	1,095 (26.8)	2,384 (24.5)
Quartile 2	3,492 (25.2)	958 (23.4)	2,534 (26.0)
Quartile 3	3,463 (25.0)	1,066 (26.1)	2,397 (24.6)
Quartile 4	3,410 (24.6)	973 (23.8)	2,437 (25.0)
<b>Nurse turnover rate</b>			
Quartile 1	3,532 (25.5)	1,007 (24.6)	2,525 (25.9)
Quartile 2	3,422 (24.7)	987 (24.1)	2,435 (25.0)
Quartile 3	3,447 (24.9)	1,036 (25.3)	2,411 (24.7)
Quartile 4	3,443 (24.9)	1,062 (26.0)	2,381 (24.4)
<b>Pharmacist turnover rate**</b>			
Quartile 1	3,476 (25.1)	1,158 (28.3)	2,318 (23.8)
Quartile 2	3,516 (25.4)	898 (22.0)	2,618 (26.9)
Quartile 3	3,397 (24.5)	957 (23.4)	2,440 (25.0)
Quartile 4	3,455 (25.0)	1,079 (26.4)	2,376 (24.4)
<b>Practical nurse turnover**</b>			
Quartile 1	3,477 (25.1)	1,087 (26.6)	2,390 (24.5)
Quartile 2	3,461 (25.0)	998 (24.4)	2,463 (25.3)
Quartile 3	3,467 (25.0)	962 (23.5)	2,505 (25.7)
Quartile 4	3,439 (24.8)	1,045 (25.5)	2,394 (24.6)
<b>Psychology Turnover*</b>			
Quartile 1	3,505 (25.3)	1,033 (25.2)	2,472 (25.4)
Quartile 2	3,435 (24.8)	1,046 (25.6)	2,389 (24.5)
Quartile 3	3,493 (25.2)	965 (23.6)	2,528 (25.9)
Quartile 4	3,411 (24.6)	1,048 (25.6)	2,363 (24.2)

\*p<0.05, \*\*p<0.01