

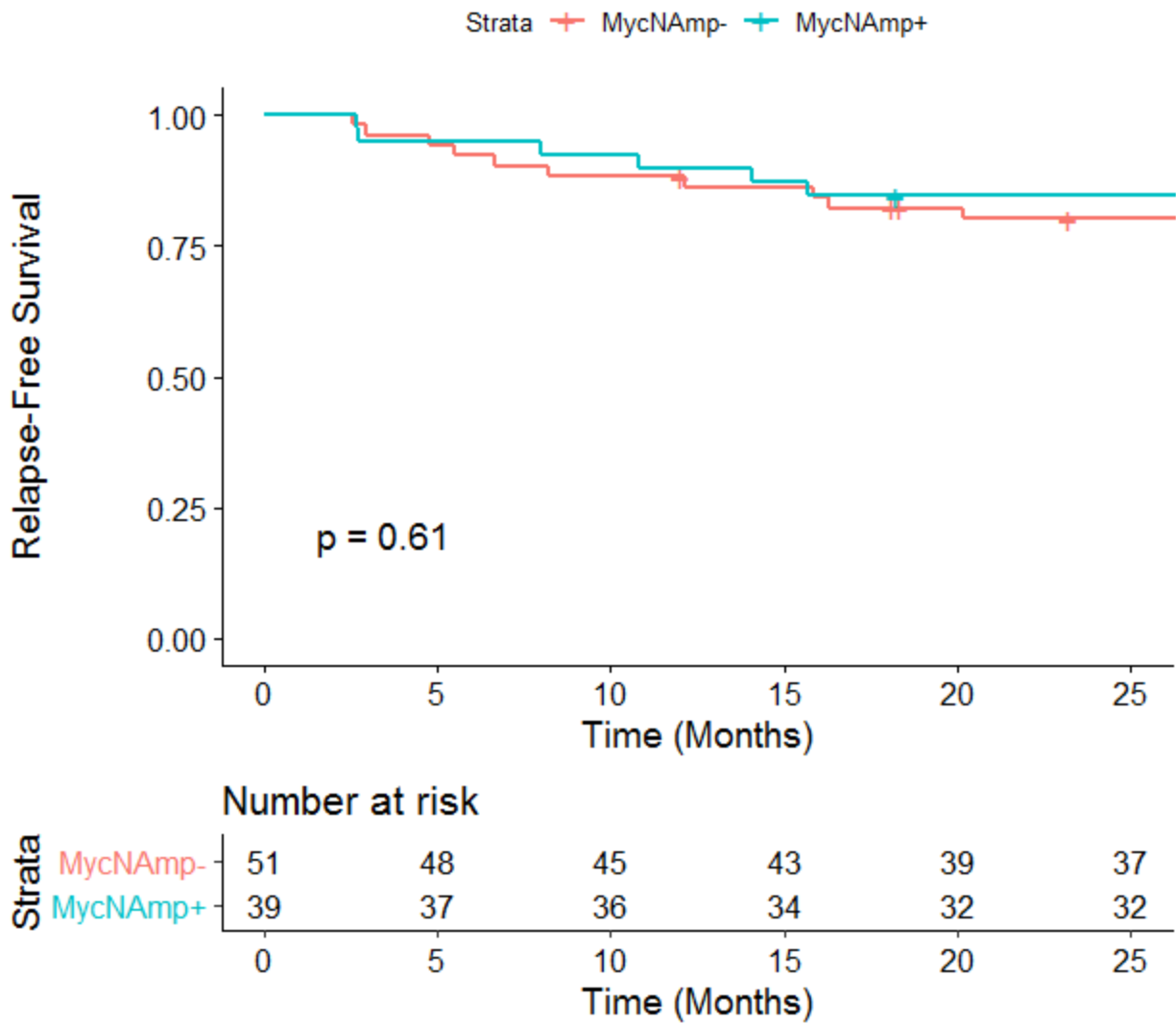
**Cell Surface Vimentin Positive Circulating Tumor Cell-Based Relapse Prediction in a
Long-Term Longitudinal Study of Post-Remission Neuroblastoma Patients**

Izhar S. Batth, PhD, Long Dao, PhD, Arun Satelli, PhD, Abhisek Mitra, PhD, Sofia Yi,
Hyangsoon Noh, PhD, Heming Li, MD, PhD, Zachary Brownlee, MD, Shouhao Zhou, PhD,
Jeffrey Bond, PhD, Jing Wang, PhD, Jonathan Gill, MD, Giselle S. Sholler, MD, MSc, Shulin Li,
PhD

Table of Contents

Supplementary Figure 1 2
Supplementary Figure 2 3

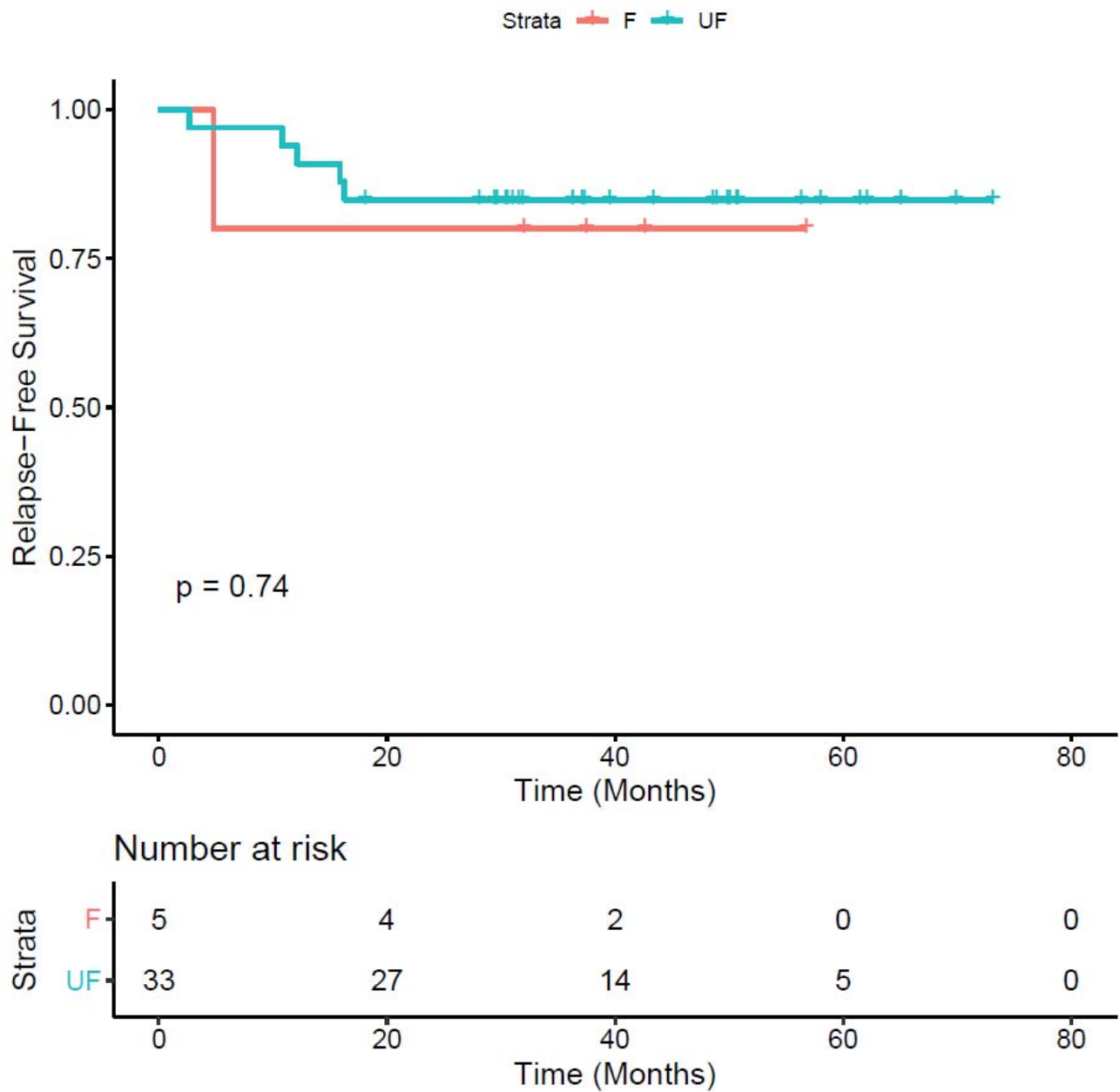
Supplementary Fig. 1



Supplementary Figure 1 Relapse-free survival of under-remission

NB patients based on MycN amplification status.

Supplementary Fig. 2



Supplementary Figure 2 Relapse-free survival of under-remission

NB patients based on patient tissue histology status. F=Favorable; UF=Unfavorable.