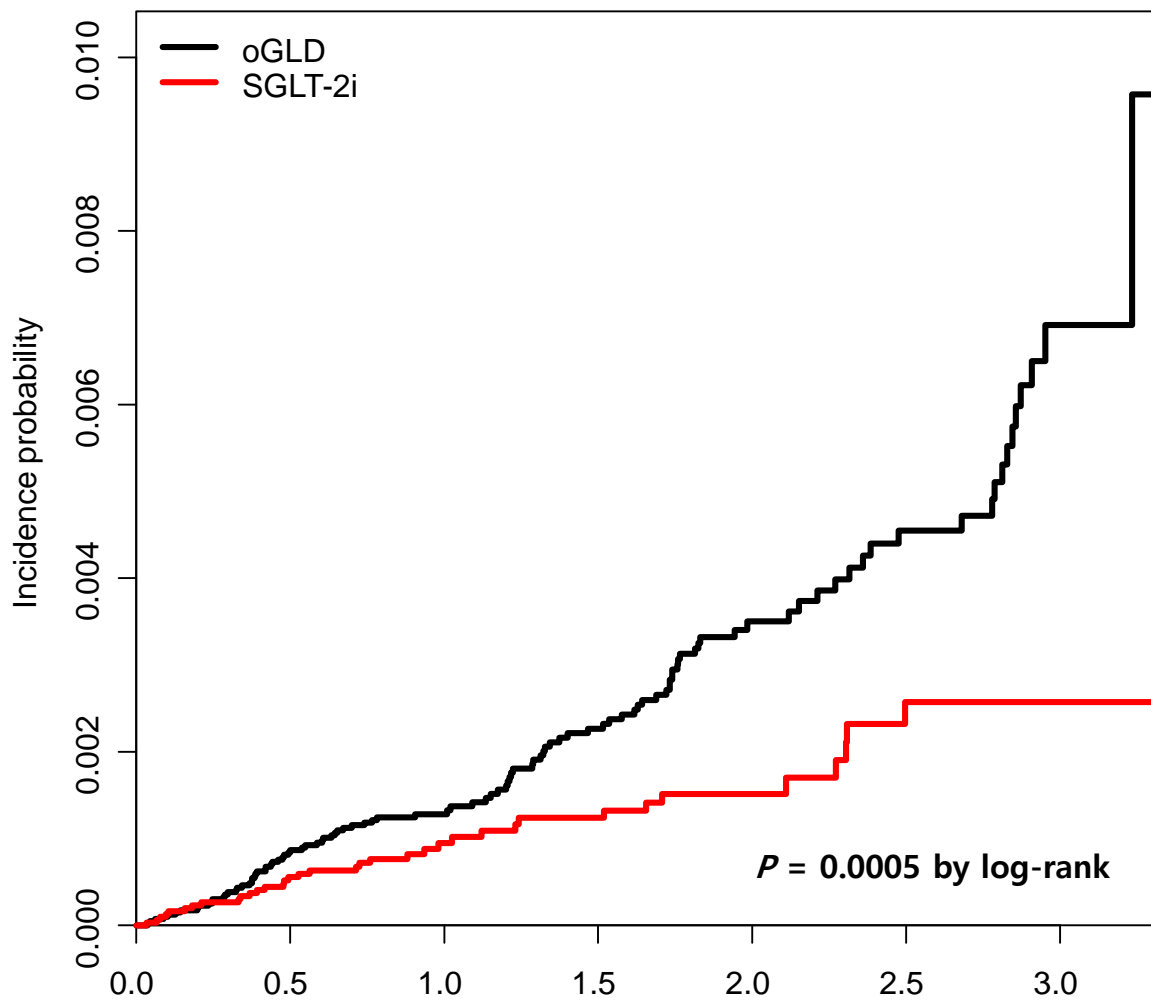
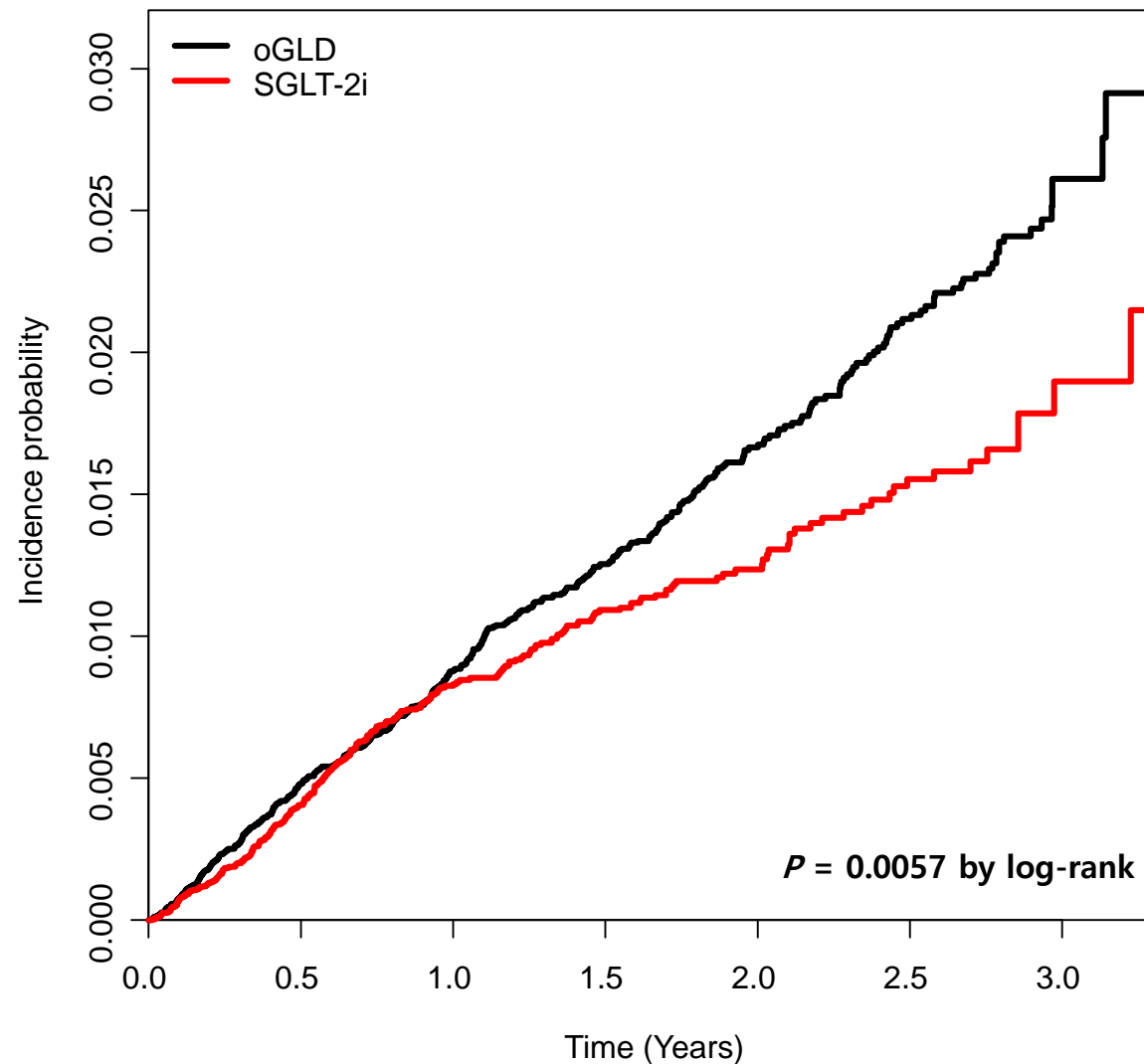


ESRD, On-treatment



	Number at risk			
	0	1	2	3
oGLD	40,673	21,886	9,427	1,255
SGLT-2i	30,527	14,312	5,572	690

All-Cause Death, On-treatment



	Number at risk			
	0	1	2	3
oGLD	40,673	21,894	9,438	1,258
SGLT-2i	30,527	14,325	5,582	691