

Supplementary Online Content

Kusamura S, Barretta F, Yonemura Y, et al; Peritoneal Surface Oncology Group International (PSOGI) and the French National Registry of Rare Peritoneal Surface Malignancies (RENAPE). The role of hyperthermic intraperitoneal chemotherapy in pseudomyxoma peritonei after cytoreductive surgery. *JAMA Surg*. Published online January 27, 2021. doi:10.1001/jamasurg.2020.6363

eFigure 1. Flowchart of Patients Selected for the Analysis (Unweighted Numbers)

eFigure 2. Kaplan-Meier Overall Survival Curves According to Treatment

eTable 1. HIPEC Schedules

eTable 2. Distribution of Prognostic Factors Between the Study Groups Before and After IPTW Weighting Adjustment in CC-0/1 Cases

eTable 3. Distribution of Prognostic Factors Between the Study Groups Before and After IPTW Weighting Adjustment in CC-2/3 Cases

eTable 4. Distribution of Prognostic Factors Between the Study Groups Before and After IPTW Weighting Adjustment in Low-Grade Disease

eTable 5. Distribution of Prognostic Factors Between the Study Groups Before and After IPTW Weighting Adjustment in High-Grade Disease

eTable 6. Distribution of Prognostic Factors Between the Study Groups Before and After IPTW Weighting Adjustment for HIPEC With Cisplatin Plus Mitomycin

eTable 7. Distribution of Prognostic Factors Between the Study Groups Before and After IPTW Weighting Adjustment for HIPEC With Mitomycin

eTable 8. Distribution of Prognostic Factors Between the Study Groups Before and After IPTW Weighting Adjustment for HIPEC With Oxaliplatin Plus Fluorouracil/Leucovorin

eTable 9. Distribution of Prognostic Factors Between the Study Groups Before and After IPTW Weighting Adjustment for HIPEC With Other Oxaliplatin-Based Combinations

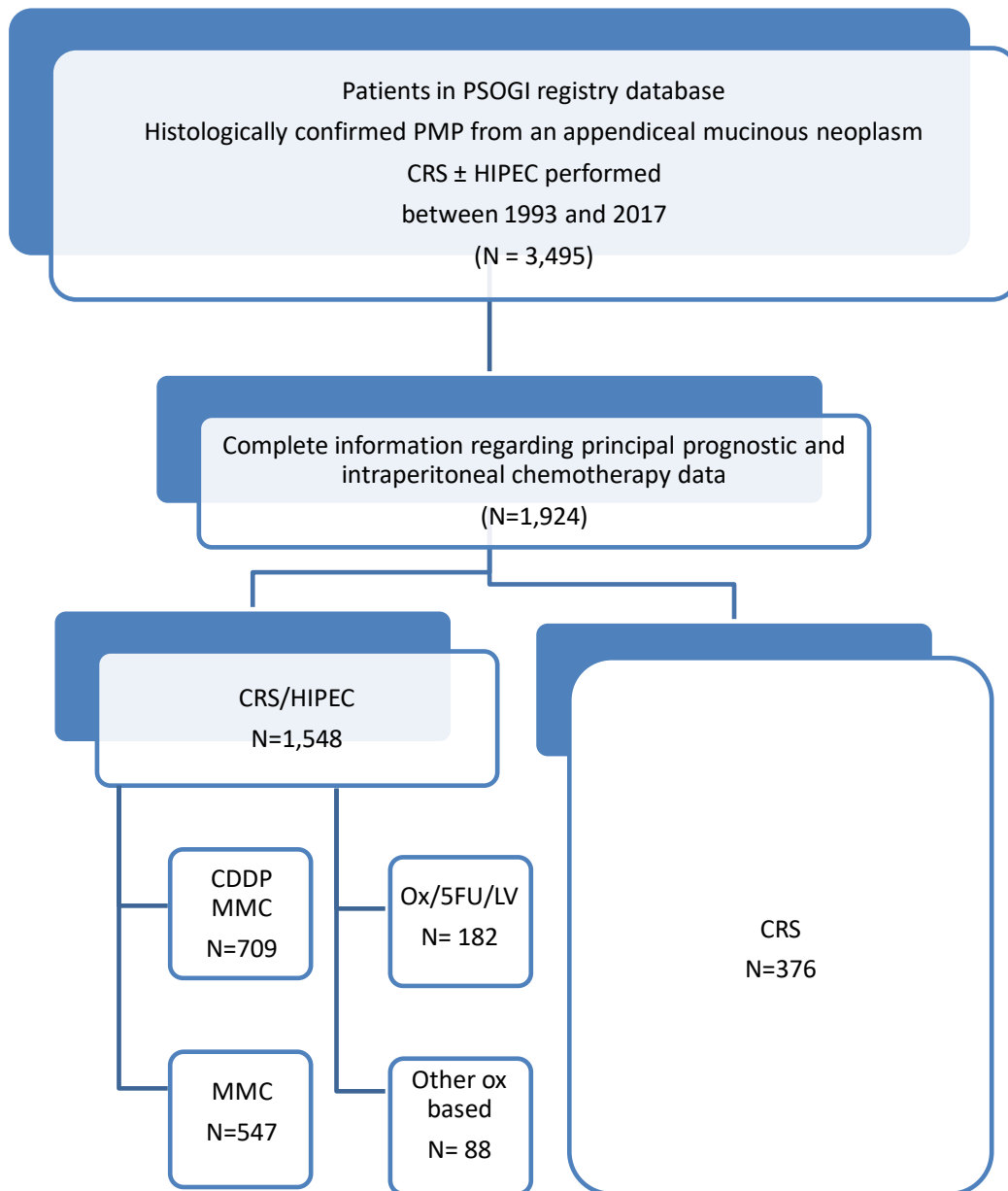
eTable 10. Surgical Outcomes of Patients With PMP Undergoing CRS-HIPEC (n = 1548) and CRS Alone (n = 376)

eTable 11. Unweighted Comparison of the Distribution of the Prognostic Factors and Outcomes Between Included and Excluded Cases

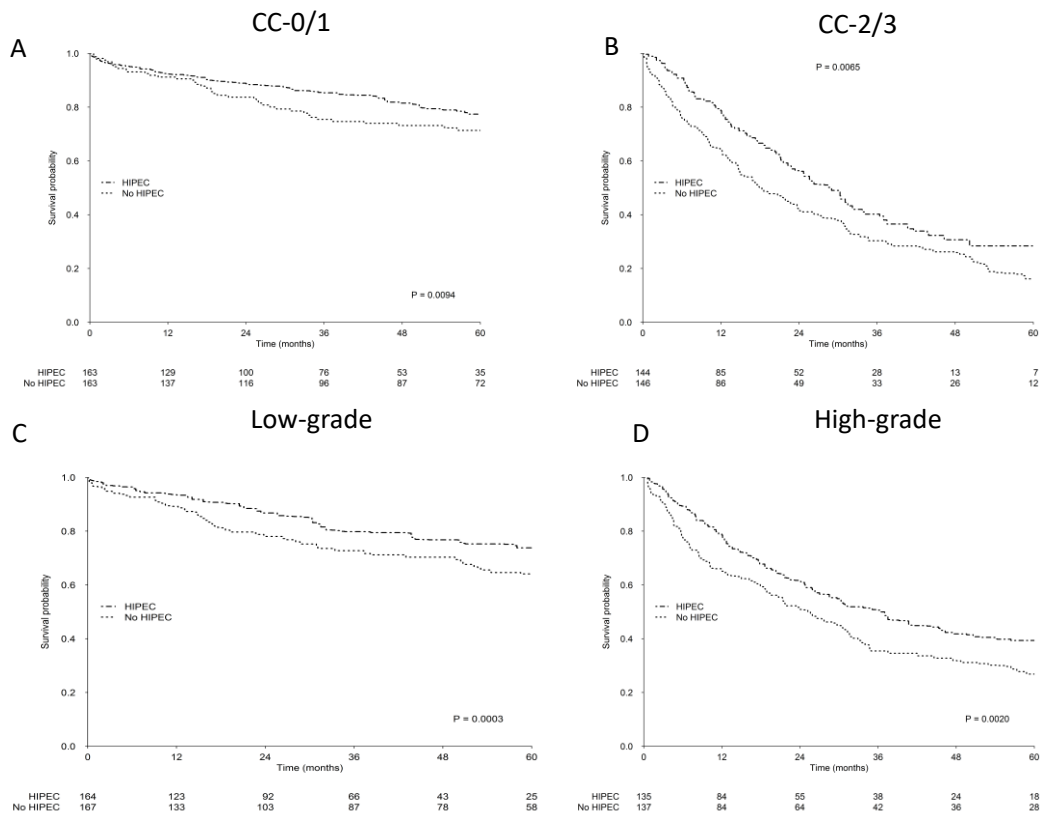
eTable 12. Unweighted Distribution of Prognostic Factors Between the Study Groups in the Cases That Were Excluded Due to Incomplete Data

This supplementary material has been provided by the authors to give readers additional information about their work.

eFigure 1. Flowchart of Patients Selected for the Analysis (Unweighted Numbers)



eFigure 2. Kaplan-Meier Overall Survival Curves According to Treatment



Includes CRS+HIPEC vs CRS alone in CC-0/1 patients (A), CC-2/3 patients (B), low-grade patients (C), and high-grade patients (D).

eTable 1. HIPEC Schedules

Intraperitoneal drug schedules	Drug 1	Drug 2	Drug 3	Perfusate	Duration	Temperature (°C)	Modality of perfusion
MMC 1	35 mg/M ²	-	-	PDS	90 min	42.0-43.0	open
MMC 2	40 mg fixed-dose	-	-	NS 3 L fixed volume	120 min	42.0	closed
CDDP MMC	Cisplatin 25 mg/M ² /L of perfusate	MMC 3.3 mg/L/M ²	-	NS+ colloid 2.5 L /m ²	60 min	42.5	closed
Oxaliplatin + 5-FU/LV	Oxaliplatin 460 mg/M ²	5-FU	LV	D5W 2.0 L/m ²	30 min	43.0	open
Oxaliplatin + 5-FU/LV	Oxaliplatin 360 mg/M ²	5-FU	LV	D5W 4-6L	30 min	42.0	closed
Other oxaliplatin	200 mg/M ²	-	-	NS 3 L fixed volume	120 min	40.0	closed

MMC: mitomycin-C; CDDP: cisplatin; LV: leucovorin; POD:postoperative day; PDS: peritoneal dialysis solution; NS: normal saline; D5W, dextrose 5%

eTable 2. Distribution of Prognostic Factors Between the Study Groups Before and After IPTW Weighting Adjustment in CC-0/1 Cases

		Unweighted comparison		
		CRS alone	CRS/HIPEC	SMD
n		164	1352	
Age (mean (SD))		55.36 (14.43)	53.45 (12.11)	0.144
Priorche = 1 (%)		69 (42.1)	423 (31.3)	0.225
LN = 1 (%)		7 (4.3)	94 (7.0)	0.117
PCI (mean (SD))		14.45 (11.48)	17.94 (10.67)	0.315
PSS (%)				0.346
0		52 (31.7)	287 (21.2)	
1		48 (29.3)	413 (30.5)	
2		51 (31.1)	413 (30.5)	
3		13 (7.9)	239 (17.7)	
CC (%)	1	57 (34.8)	473 (35.0)	0.005
Epic (%)	1	37 (22.6)	225 (16.6)	0.150
Histol (%)	1	59 (36.0)	388 (28.7)	0.156
		Weighted comparison		
		CRS alone	CRS/HIPEC	SMD
n		163.61	163.71	
Age (mean (SD))		55.31 (14.41)	55.38 (13.99)	0.005
Priorche (%)	1	68.7 (42.0)	70.9 (43.3)	0.027
LN (%)	1	7.0 (4.3)	6.7 (4.1)	0.011
PCI (mean (SD))		14.47 (11.48)	14.59 (11.45)	0.010
PSS (%)				0.022
0		51.7 (31.6)	50.5 (30.9)	
1		48.0 (29.3)	48.5 (29.6)	
2		50.9 (31.1)	52.1 (31.8)	
3		13.0 (7.9)	12.6 (7.7)	
CC (%)	1	163.6 (100.0)	163.7 (100.0)	<0.001
Epic (%)	1	37.0 (22.6)	38.6 (23.6)	0.023
Histol (%)	1	58.7 (35.9)	58.7 (35.9)	<0.001

SMD: standard mean difference. We set SMD < 0.3 as perfect balance for the IPTW propensity score matching; Priorche: prior systemic chemotherapy; LN: lymph node; PCI: peritoneal cancer index; PSS: prior surgical score; Epic: early postoperative peritoneal chemotherapy; Histology: 1: low grade; 2: high grade; CC: completeness of cytoreduction score

eTable 3. Distribution of Prognostic Factors Between the Study Groups Before and After IPTW Weighting Adjustment in CC-2/3 Cases

Unweighted comparison			
	CRS alone	CRS/HIPEC	SMD
n	212	196	
Age (mean (SD))	61.66 (13.95)	56.12 (13.81)	0.399
Priorche = 1 (%)	129 (60.8)	106 (54.1)	0.137
LN = 1 (%)	7 (3.3)	25 (12.8)	0.353
PCI (mean (SD))	30.08 (8.91)	30.32 (7.80)	0.028
PSS (%)			0.373
0	66 (31.1)	68 (34.7)	
1	51 (24.1)	54 (27.6)	
2	78 (36.8)	43 (21.9)	
3	17 (8.0)	31 (15.8)	
CC = 3 (%)	175 (82.5)	117 (59.7)	0.521
Epic = 1 (%)	16 (7.5)	25 (12.8)	0.173
Histol = 2 (%)	120 (56.6)	104 (53.1)	0.071

Weighted comparison			
	CRS alone	CRS/HIPEC	SMD
n	146.57	144.60	
Age (mean (SD))	58.48 (13.62)	58.72 (13.39)	0.018
Priorche = 1 (%)	84.9 (57.9)	84.9 (58.7)	0.017
LN = 1 (%)	6.8 (4.6)	6.3 (4.4)	0.012
PCI (mean (SD))	30.72 (7.95)	30.75 (7.89)	0.004
PSS (%)			0.036
0	48.3 (33.0)	48.8 (33.7)	
1	40.9 (27.9)	41.7 (28.8)	
2	41.7 (28.5)	39.0 (27.0)	
3	15.6 (10.6)	15.2 (10.5)	
CC = 3 (%)	122.2 (83.3)	94.9 (65.6)	0.416
Epic = 1 (%)	13.8 (9.4)	14.3 (9.9)	0.017
Histol = 2 (%)	79.1 (54.0)	79.3 (54.9)	0.018

SMD: standard mean difference. We set SMD < 0.3 as perfect balance for the IPTW propensity score matching; Priorche: prior systemic chemotherapy; LN: lymph node; PCI: peritoneal cancer index; PSS: prior surgical score; Epic: early postoperative peritoneal chemotherapy; Histology: 1: low grade; 2: high grade; CC: completeness of cytoreduction score

eTable 4. Distribution of Prognostic Factors Between the Study Groups Before and After IPTW Weighting Adjustment in Low-Grade Disease

Unweighted comparison			
	CRS alone	CRS/HIPEC	SMD
n	197	1056	
Age (mean (SD))	59.42 (14.87)	54.35 (12.40)	0.371
Priorche = 1 (%)	78 (39.6)	279 (26.4)	0.283
LN = 1 (%)	2 (1.0)	25 (2.4)	0.105
PCI (mean (SD))	21.48 (13.30)	18.39 (10.74)	0.255
CC (%)			0.964
1	105 (53.3)	964 (91.3)	
2	16 (8.1)	41 (3.9)	
3	76 (38.6)	51 (4.8)	
PSS (%)			0.282
0	56 (28.4)	225 (21.3)	
1	53 (26.9)	353 (33.4)	
2	66 (33.5)	289 (27.4)	
3	22 (11.2)	189 (17.9)	
Epic = 1 (%)	24 (12.2)	141 (13.4)	0.035
Weighted comparison			
	CRS alone	CRS/HIPEC	SMD
n	167.63	164.68	
Age (mean (SD))	57.55 (14.65)	57.39 (14.48)	0.011
Priorche = 1 (%)	62.1 (37.0)	62.8 (38.1)	0.023
LN = 1 (%)	1.7 (1.0)	1.6 (1.0)	0.005
PCI (mean (SD))	19.54 (12.87)	19.52 (12.59)	0.002
CC (%)			0.051
1	105.0 (62.6)	105.2 (63.9)	
2	15.9 (9.5)	13.3 (8.1)	
3	46.7 (27.9)	46.1 (28.0)	
PSS (%)			0.049
0	43.2 (25.8)	45.4 (27.6)	
1	48.3 (28.8)	47.2 (28.7)	
2	56.2 (33.6)	52.1 (31.7)	
3	19.8 (11.8)	19.9 (12.1)	
Epic = 1 (%)	21.1 (12.6)	22.4 (13.6)	0.031

SMD: standard mean difference. We set SMD < 0.3 as perfect balance for the IPTW propensity score matching; Priorche: prior systemic chemotherapy; LN: lymph node; PCI: peritoneal cancer index; PSS: prior surgical score; Epic: early postoperative peritoneal chemotherapy; Histology: CC: completeness of cytoreduction score

eTable 5. Distribution of Prognostic Factors Between the Study Groups Before and After IPTW Weighting Adjustment in High-Grade Disease

Unweighted comparison			
	CRS alone	CRS/HIPEC	SMD
n	179	492	
Age (mean (SD))	58.35 (14.07)	52.58 (12.22)	0.438
Priorche = 1 (%)	120 (67.0)	250 (50.8)	0.334
LN = 1 (%)	12 (6.7)	94 (19.1)	0.376
PCI (mean (SD))	25.23 (11.81)	21.89 (11.61)	0.285
CC (%)			1.081
1	59 (33.0)	388 (78.9)	
2	21 (11.7)	38 (7.7)	
3	99 (55.3)	66 (13.4)	
PSS (%)			0.412
0	62 (34.6)	130 (26.4)	
1	46 (25.7)	114 (23.2)	
2	63 (35.2)	167 (33.9)	
3	8 (4.5)	81 (16.5)	
Epic = 1 (%)	29 (16.2)	109 (22.2)	0.152
Weighted comparison			
	CRS alone	CRS/HIPEC	SMD
n	137.09	135.71	
Age (mean (SD))	55.93 (13.46)	55.87 (13.32)	0.004
Priorche = 1 (%)	87.6 (63.9)	85.9 (63.3)	0.013
LN = 1 (%)	10.6 (7.7)	10.8 (8.0)	0.008
PCI (mean (SD))	24.69(12.42)	24.63 (12.11)	0.004
CC (%)			0.124
1	58.9 (43.0)	60.8 (44.8)	
2	20.2 (14.7)	14.4 (10.6)	
3	58.0 (42.3)	60.5 (44.6)	
PSS (%)			0.240
0	42.0 (30.6)	45.2 (33.3)	
1	35.7 (26.0)	39.8 (29.3)	
2	52.4 (38.3)	38.5 (28.4)	
3	7.0 (5.1)	12.2 (9.0)	
Epic = 1 (%)	25.5 (18.6)	26.9 (19.8)	0.030

SMD: standard mean difference. We set SMD < 0.3 as perfect balance for the IPTW propensity score matching; Priorche: prior systemic chemotherapy; LN: lymph node; PCI: peritoneal cancer index; PSS: prior surgical score; Epic: early postoperative peritoneal chemotherapy; Histology: CC: completeness of cytoreduction score

eTable 6. Distribution of Prognostic Factors Between the Study Groups Before and After IPTW Weighting Adjustment for HIPEC With Cisplatin Plus Mitomycin

Unweighted comparison			
	CRS	CRS/HIPEC	SMD
n	376	709	
Age (mean (SD))	58.91 (14.48)	53.96 (12.74)	0.363
Priorche = 1 (%)	198 (52.7)	272 (38.4)	0.290
LN = 1 (%)	14 (3.7)	29 (4.1)	0.019
PCI (mean (SD))	23.26 (12.74)	18.48 (11.32)	0.397
CC (%)			1.032
1	164 (43.6)	616 (86.9)	
2	37 (9.8)	29 (4.1)	
3	175 (46.5)	64 (9.0)	
PSS (%)			0.155
0	118 (31.4)	182 (25.7)	
1	99 (26.3)	227 (32.0)	
2	129 (34.3)	250 (35.3)	
3	30 (8.0)	50 (7.1)	
Epic = 1 (%)	53 (14.1)	80 (11.3)	0.085
Histol = 2 (%)	179 (47.6)	223 (31.5)	0.335

Weighted comparison			
	CRS	CRS/HIPEC	SMD
n	256.57	252.04	
Age (mean (SD))	56.31 (13.92)	56.28 (13.67)	0.001
Priorche = 1 (%)	124.0 (48.3)	124.0 (49.2)	0.017
LN = 1 (%)	10.8 (4.2)	11.8 (4.7)	0.025
PCI (mean (SD))	20.07 (12.76)	19.91 (12.77)	0.012
CC (%)			0.115
1	163.4 (63.7)	166.4 (66.0)	
2	31.1 (12.1)	21.8 (8.6)	
3	62.0 (24.2)	63.9 (25.3)	
PSS (%)			0.018
0	74.1 (28.9)	73.9 (29.3)	
1	73.9 (28.8)	73.8 (29.3)	
2	88.0 (34.3)	84.7 (33.6)	
3	20.5 (8.0)	19.7 (7.8)	
Epic = 1 (%)	42.4 (16.5)	43.7 (17.3)	0.022
Histol = 2 (%)	108.7 (42.4)	108.0 (42.9)	0.010

SMD: standard mean difference. We set SMD < 0.3 as perfect balance for the IPTW propensity score matching; Priorche: prior systemic chemotherapy; LN: lymph node; PCI: peritoneal cancer index; PSS: prior surgical score; Epic: early postoperative peritoneal chemotherapy; Histology: 1: low grade; 2: high grade; CC: completeness of cytoreduction score

eTable 7. Distribution of Prognostic Factors Between the Study Groups Before and After IPTW Weighting Adjustment for HIPEC With Mitomycin

Unweighted comparison

	CRS alone	CRS/HIPEC	SMD
n	376	547	
Age (mean (SD))	58.95 (14.49)	52.82 (12.06)	0.460
Priorche = 1 (%)	198 (52.5)	147 (26.9)	0.543
LN = 1 (%)	14 (3.7)	71 (13.0)	0.340
PCI (mean (SD))	23.28 (12.72)	21.48 (11.22)	0.150
CC (%)			1.124
1	165 (43.8)	476 (87.0)	
2	37 (9.8)	44 (8.0)	
3	175 (46.4)	27 (4.9)	
PSS (%)			0.545
0	118 (31.3)	113 (20.7)	
1	99 (26.3)	151 (27.6)	
2	130 (34.5)	137 (25.0)	
3	30 (8.0)	146 (26.7)	
Epic = 1 (%)	53 (14.1)	162 (29.6)	0.383
Histol = 2 (%)	179 (47.5)	187 (34.2)	0.273

Weighted comparison

	CRS alone	CRS/HIPEC	SMD
n	193.55	196.03	
Age (mean (SD))	55.21 (13.66)	55.47 (13.45)	0.019
Priorche = 1 (%)	76.2 (39.4)	78.7 (40.1)	0.016
LN = 1 (%)	10.1 (5.2)	10.4 (5.3)	0.003
PCI (mean (SD))	19.23 (12.74)	19.22 (11.93)	0.001
CC (%)		0.098	
1	148.0 (76.5)	145.8 (74.4)	
2	19.0 (9.8)	25.2 (12.9)	
3	26.6 (13.7)	25.0 (12.8)	
PSS (%)			0.044
0	52.1 (26.9)	50.3 (25.7)	
1	54.5 (28.1)	53.7 (27.4)	
2	62.4 (32.2)	67.0 (34.2)	
3	24.7 (12.7)	25.1 (12.8)	
Epic = 1 (%)	39.7 (20.5)	40.1 (20.4)	0.002
Histol = 2 (%)	70.6 (36.5)	71.7 (36.6)	0.001

SMD: standard mean difference. We set SMD < 0.3 as perfect balance for the IPTW propensity score matching; Priorche: prior systemic chemotherapy; LN: lymph node; PCI: peritoneal cancer index; PSS: prior surgical score; Epic: early postoperative peritoneal chemotherapy; Histology: 1: low grade; 2: high grade; CC: completeness of cytoreduction score

eTable 8. Distribution of Prognostic Factors Between the Study Groups Before and After IPTW Weighting Adjustment for HIPEC With Oxaliplatin Plus Fluorouracil/Leucovorin

Unweighted comparison			
	CRS alone	CRS/HIPEC	SMD
n	376	182	
Age (mean (SD))	58.95 (14.49)	56.57 (11.44)	0.183
Priorche = 1 (%)	198 (52.5)	72 (39.6)	0.262
LN = 1 (%)	14 (3.7)	14 (7.7)	0.172
PCI (mean (SD))	23.28 (12.72)	18.27 (10.27)	0.434
CC (%)			0.996
1	165 (43.8)	157 (86.3)	
2	37 (9.8)	5 (2.7)	
3	175 (46.4)	20 (11.0)	
PSS (%)			0.446
0	118 (31.3)	39 (21.4)	
1	99 (26.3)	56 (30.8)	
2	130 (34.5)	48 (26.4)	
3	30 (8.0)	39 (21.4)	
Epic = 1 (%)	53 (14.1)	1 (0.5)	0.538
Histol = 2 (%)	179 (47.5)	64 (35.2)	0.252

Weighted comparison			
	CRS alone	CRS/HIPEC	SMD
n	125.02	119.14	
Age (mean (SD))	57.56 (12.65)	57.18 (12.62)	0.030
Priorche = 1 (%)	56.6 (45.2)	52.1 (43.7)	0.030
LN = 1 (%)	4.0 (3.2)	3.8 (3.2)	0.003
PCI (mean (SD))	18.54 (11.70)	18.32 (11.41)	0.019
CC (%)			0.284
1	93.5 (74.7)	94.6 (79.4)	
2	13.9 (11.1)	4.5 (3.8)	
3	17.7 (14.1)	20.0 (16.8)	
PSS (%)			0.045
0	32.9 (26.3)	33.0 (27.7)	
1	42.2 (33.8)	38.8 (32.6)	
2	37.8 (30.2)	36.8 (30.9)	
3	12.1 (9.7)	10.5 (8.8)	
Epic = 1 (%)	1.2 (0.9)	1.0 (0.8)	0.011
Histol = 2 (%)	44.4 (35.5)	42.6 (35.8)	0.005

SMD: standard mean difference. We set SMD < 0.3 as perfect balance for the IPTW propensity score matching; Priorche: prior systemic chemotherapy; LN: lymph node; PCI: peritoneal cancer index; PSS: prior surgical score; Epic: early postoperative peritoneal chemotherapy; Histology: 1: low grade; 2: high grade; CC: completeness of cytoreduction score

eTable 9. Distribution of Prognostic Factors Between the Study Groups Before and After IPTW Weighting Adjustment for HIPEC With Other Oxaliplatin-Based Combinations

Unweighted comparison			
	CRS alone	CRS/HIPEC	SMD
n	376	88	
Age (mean (SD))	58.95 (14.49)	53.27 (11.54)	0.434
Priorche = 1 (%)	198 (52.5)	28 (31.8)	0.429
LN = 1 (%)	14 (3.7)	4 (4.5)	0.042
PCI (mean (SD))	23.28 (12.72)	18.16 (9.27)	0.460
CC (%)			1.359
1	165 (43.8)	84 (95.5)	
2	37 (9.8)	1 (1.1)	
3	175 (46.4)	3 (3.4)	
PSS (%)			0.896
0	118 (31.3)	14 (15.9)	
1	99 (26.3)	27 (30.7)	
2	130 (34.5)	13 (14.8)	
3	30 (8.0)	34 (38.6)	
Epic = 1 (%)	53 (14.1)	7 (8.0)	0.196
Histol = 2 (%)	179 (47.5)	14 (15.9)	0.721
Weighted comparison			
	CRS alone	CRS/HIPEC	SMD
n	62.38	58.48	
Age (mean (SD))	53.98 (12.05)	53.68 (12.39)	0.025
Priorche = 1 (%)	21.9 (35.0)	20.7 (35.5)	0.009
ln = 1 (%)	2.2 (3.5)	2.3 (4.0)	0.026
PCI (mean (SD))	18.26 (11.10)	18.07 (10.04)	0.018
CC (%)			0.324
1	54.3 (87.0)	54.5 (93.2)	
2	5.5 (8.8)	1.0 (1.7)	
3	2.6 (4.2)	3.0 (5.1)	
PSS (%)			0.039
0	14.3 (22.9)	13.8 (23.6)	
1	22.3 (35.8)	21.4 (36.6)	
2	13.0 (20.8)	12.2 (20.8)	
3	12.8 (20.5)	11.1 (19.0)	
Epic = 1 (%)	7.8 (12.5)	6.2 (10.6)	0.060
Histol = 2 (%)	13.2 (21.2)	12.0 (20.5)	0.015

SMD: standard mean difference. We set SMD < 0.3 as perfect balance for the IPTW propensity score matching; Priorche: prior systemic chemotherapy; LN: lymph node; PCI: peritoneal cancer index; PSS: prior surgical score; Epic: early postoperative peritoneal chemotherapy; Histology: 1: low grade; 2: high grade; CC: completeness of cytoreduction score

eTable 10. Surgical Outcomes of Patients With PMP Undergoing CRS-HIPEC (n = 1548) and CRS Alone (n = 376)

(unweighted comparison)

	CRS HIPEC		CRS
	n (%)		n (%)
90-day mortality	48 (3.1%)		33 (8.8%)
30-day mortality	24 (1.6%)		16 (4.3%)
Return to operating room	143 (9.2%)		35 (9.3%)
Grade 3-5 morbidity	506 (32.7%)		109 (29.0%)
Surgical complications			
Septic collection	125 (8.1%)		17 (4.5%)
Gastric/bowel fistula	121 (7.8%)		37 (9.8%)
Pancreatic fistula	32 (2.1%)		1 (0.3%)
Bleeding	91 (5.9%)		14 (3.7%)
Genitourinary	10 (0.6%)		3 (0.8%)
Thromboembolic event	6 (0.4%)		1 (0.3%)
Isolated cardiac failure	58 (3.8%)		5 (1.3%)
Pneumonia	65 (4.2%)		12 (3.2%)
Pleural	146 (9.4%)		12 (3.2%)
Pneumothorax	38 (3.0%)		0 (0%)
Systemic toxicities			
Bone marrow toxicity	16 (1.0%)		0 (0%)
Renal Failure	35 (2.3%)		2 (0.5%)
Disseminated intravascular coagulation	12 (0.8%)		2 (0.5%)

eTable 11. Unweighted Comparison of the Distribution of the Prognostic Factors and Outcomes Between Included and Excluded Cases

Parameters	Categories	Included (n=1924)	Excluded (n=1571)	SMD
Age	(median, IQR)	56.0 [45.0, 65.0]	54.5 [45.0, 62.9]	0.089
	Missing (%)	0 (0.0)	414 (26.3)	
Priorchemo	N (%)	727 (37.8)	197 (32.1)	0.119
	Missing	0	958	
LN	positive	133 (6.9)	55 (3.6)	0.148
	negative	1791 (93.1)	1469 (96.4)	
	Missing	0	47	
PCI	(mean, IQR)	20.0 [10.0, 29.0]	19.0 [9.0, 29.0]	0.083
	missing	0	987	
CC	0/1	1516 (78.8)	1259 (80.3)	0.038
	2/3	408 (21.2)	308 (19.7)	
	Missing	0	4	
PSS	0	473 (24.6)	201 (21.0)	0.235
	1	566 (29.4)	211 (22.0)	
	2	585 (30.4)	336 (35.1)	
	3	300 (15.6)	209 (21.8)	
	Missing	0	614	
EPIC	yes	303 (15.7)	525 (35.2)	0.459
	no	1621 (84.3)	965 (64.8)	
	Missing	0	81	
Histology	Low grade	1253 (65.1)	1075 (73.7)	0.186
	High grade	671 (34.9)	384 (26.3)	
	Missing	0	112	
Outcome				
Survival				
	- 5 year OS (%; CI95%)	0.649 (0.621-0.677)	0.767 (0.741-0.792)	<0.001 (p-value)
	- 10 year OS (%;CI95%)	0.513 (0.465-0.567)	0.669 (0.629-0.710)	
	missing	0	19	
	90-day mortality (%)	81 (4.2)	48 (3.1)	0.062
	missing	0	0	
	30-day mortality (%)	40 (2.1)	29 (1.8)	0.017
	missing	0	0	
	Return to OR (%)	82 (9.3)	82 (5.5)	0.145
	missing	0	74	
	Severe morbidity (%)	615 (32.0)	283 (18.6)	0.311
	missing	0	50	

SMD: standardized mean difference

eTable 12. Unweighted Distribution of Prognostic Factors Between the Study Groups in the Cases That Were Excluded Due to Incomplete Data

		Stratified by hipec		
		CRS alone	CRS/HIPEC	SMD
n		223	1342	
Age (median [IQR])		58.40 [48.50, 67.00]	54.00 [44.10, 61.70]	0.322
Priorche (%)	0	53 (68.8)	362 (68.3)	0.011
	1	24 (31.2)	168 (31.7)	
LN (%)	0	215 (98.2)	1248 (96.1)	0.126
	1	4 (1.8)	51 (3.9)	
PCI (median [IQR])		15.00 [7.75, 26.50]	19.00 [10.00, 29.00]	0.146
CC (%)	1	223 (100.0)	1338 (100.0)	<0.001
pss (%)	0	11 (23.9)	188 (20.8)	0.311
	1	7 (15.2)	203 (22.4)	
	2	13 (28.3)	321 (35.4)	
	3	15 (32.6)	194 (21.4)	
Epic (%)	0	161 (88.0)	801 (61.4)	0.641
	1	22 (12.0)	503 (38.6)	
Histol (%)	1	165 (77.5)	908 (73.0)	0.102
	2	48 (22.5)	335 (27.0)	
Severe morbidity_(%)	0	160 (83.8)	1073 (81.0)	0.072
	1	31 (16.2)	251 (19.0)	
10-year OS (% , 95%CI)		30.7% [20.1-46.7%]	71.7% [67.5-76.0%]	p<0.001