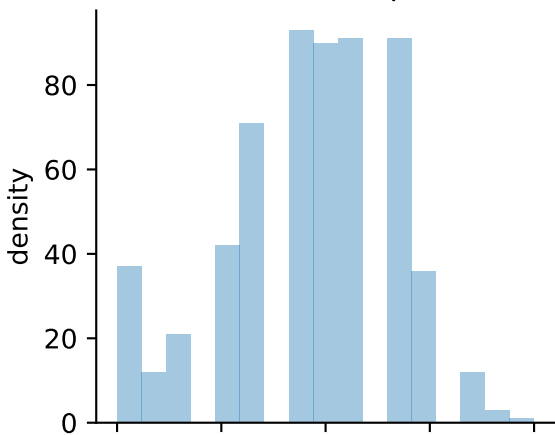
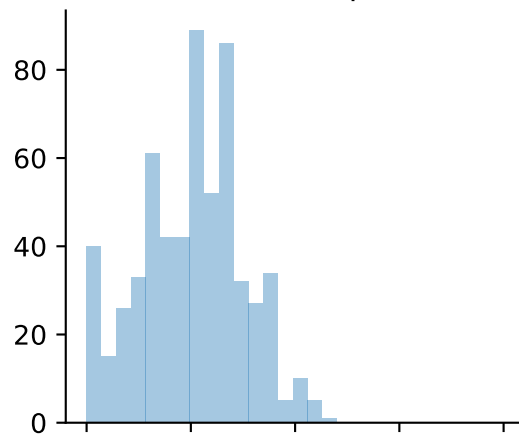


# Noise buffers among the simulated data with noise

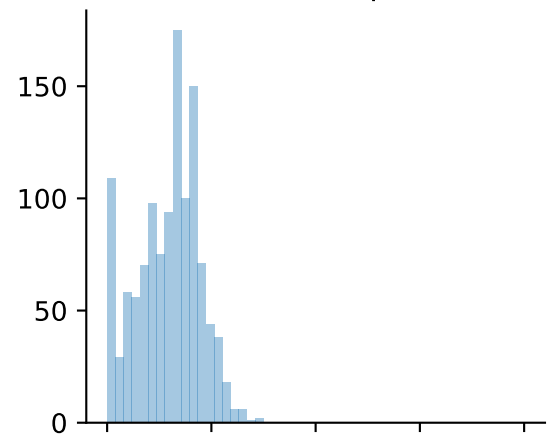
## effective read depth of 30



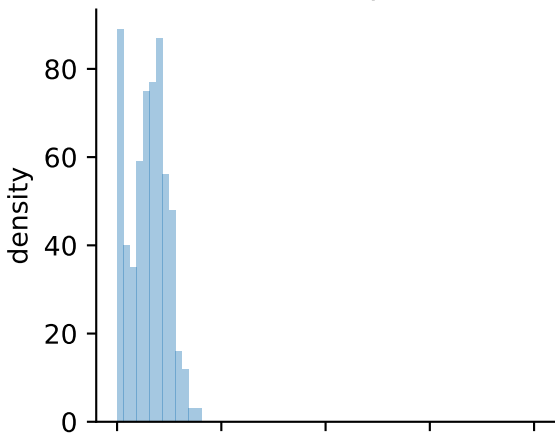
## effective read depth of 100



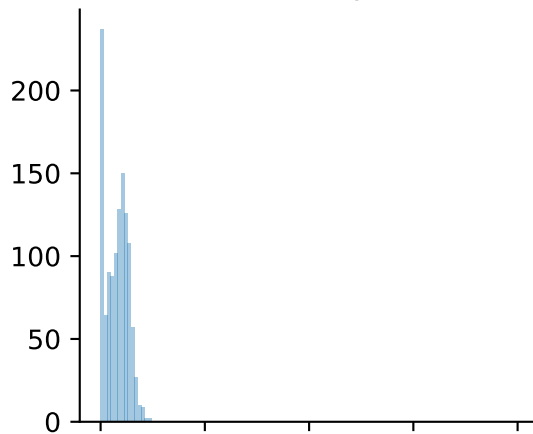
## effective read depth of 300



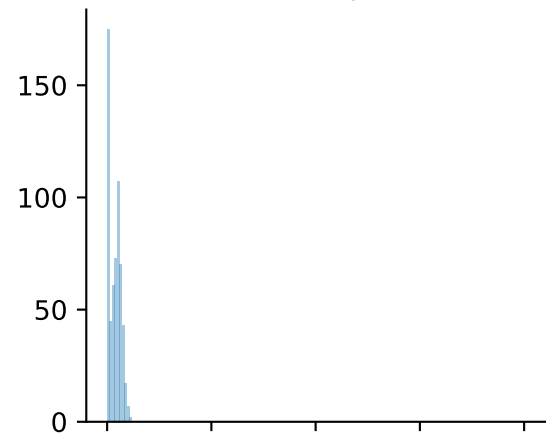
## effective read depth of 1000



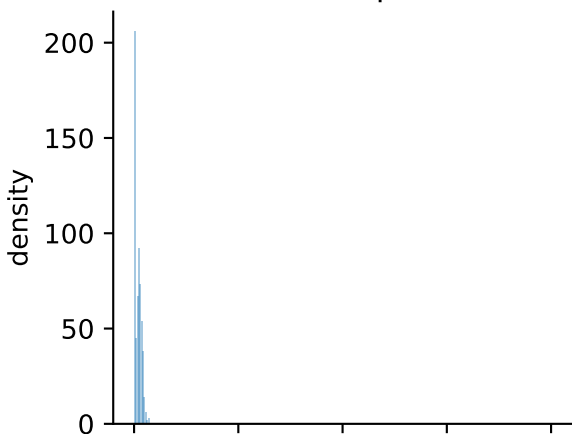
## effective read depth of 3000



## effective read depth of 10000



## effective read depth of 30000



maximum value in the noise buffer set

maximum value in the noise buffer set

maximum value in the noise buffer set