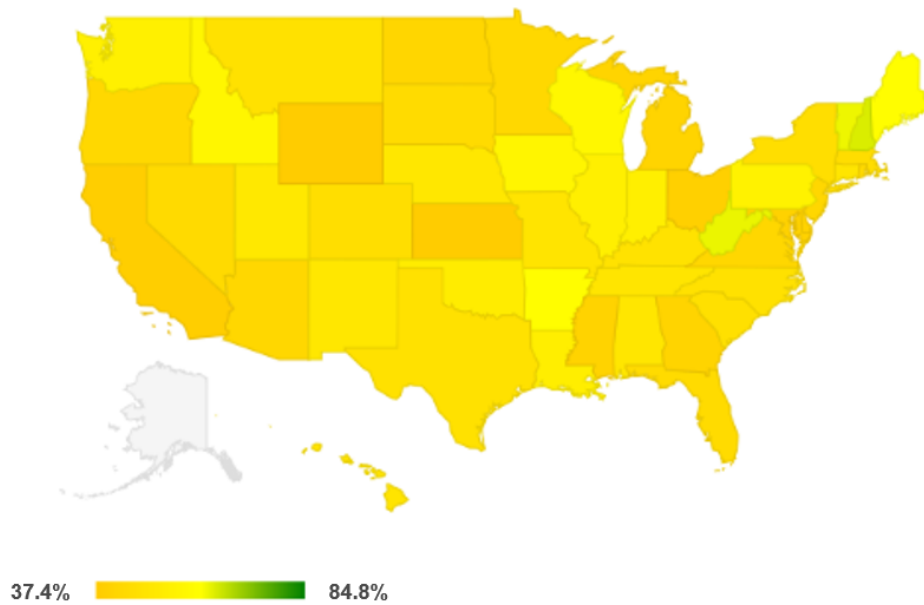


ONLINE SUPPLEMENT

Adherence in children using positive airway pressure therapy: a big data analysis

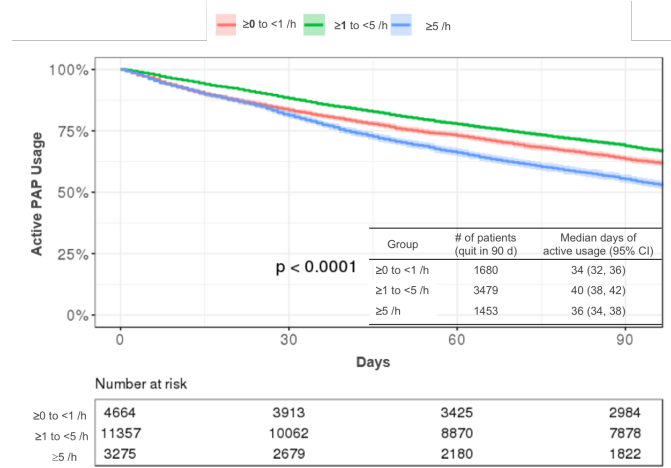
Rakesh Bhattacharjee, Adam Benjafield, Jeff Armitstead, Peter A. Cistulli, Carlos Nunez, Jean-Louis Pepin, Holger Woehrle, Yang Yan, Atul Malhotra

Supplementary Figure 1: Geographic variation in proportion of paediatric patients meeting Centers for Medicare & Medicaid Services adherence criteria during use of positive airway pressure (PAP)

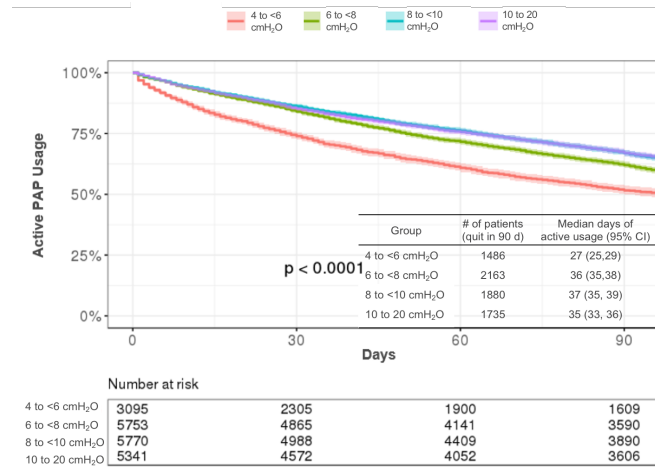


Supplementary Figure 2: Influence of (A) residual apnoea-hypopnoea index (rAHI), (B) 95th percentile pressure, and (C) median mask leak, on usage of positive airway pressure (PAP).

A



B



C

