

Schisandrin C exerts reno-protective effect on DN-models

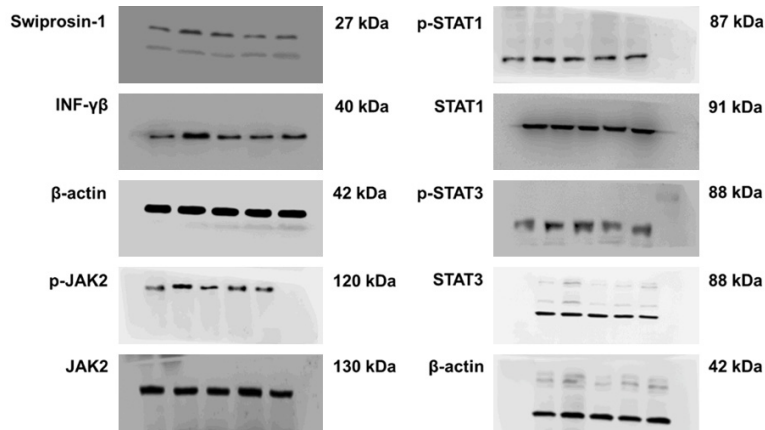


Figure S1. Schisandrin C downregulated the Swiprosin-1/IFN-γ-Rβ signaling pathway in the right kidneys of DN model mice. Histiocyte lysates were subjected to western blotting test and probed for the expression levels of Swiprosin-1, IFN-γβ, p-JAK2, JAK2, p-STAT1, STAT1, p-STAT3, STAT3 and β-actin.

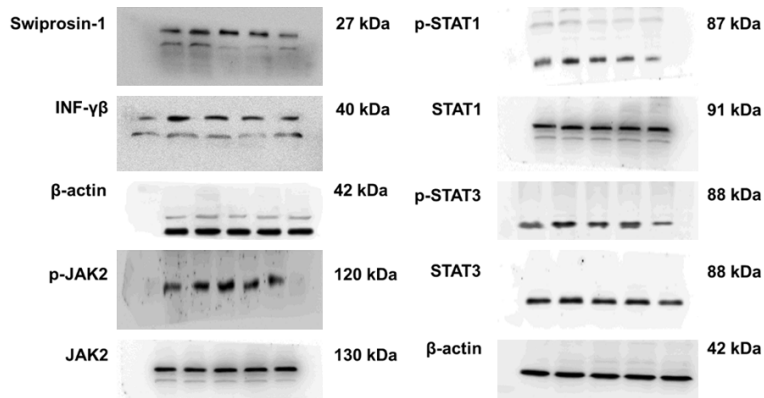


Figure S2. Schisandrin C downregulated the Swiprosin-1/IFN-γ-Rβ signaling pathway, in high-glucose-stimulated RAW264.7 cells. Cell lysates were subjected to western blotting test and probed for the expression levels of Swiprosin-1, IFN-γβ, p-JAK2, JAK2, p-STAT1, STAT1, p-STAT3, STAT3 and β-actin.