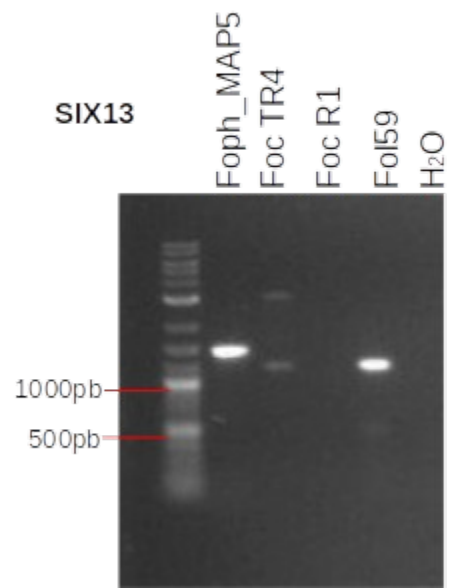
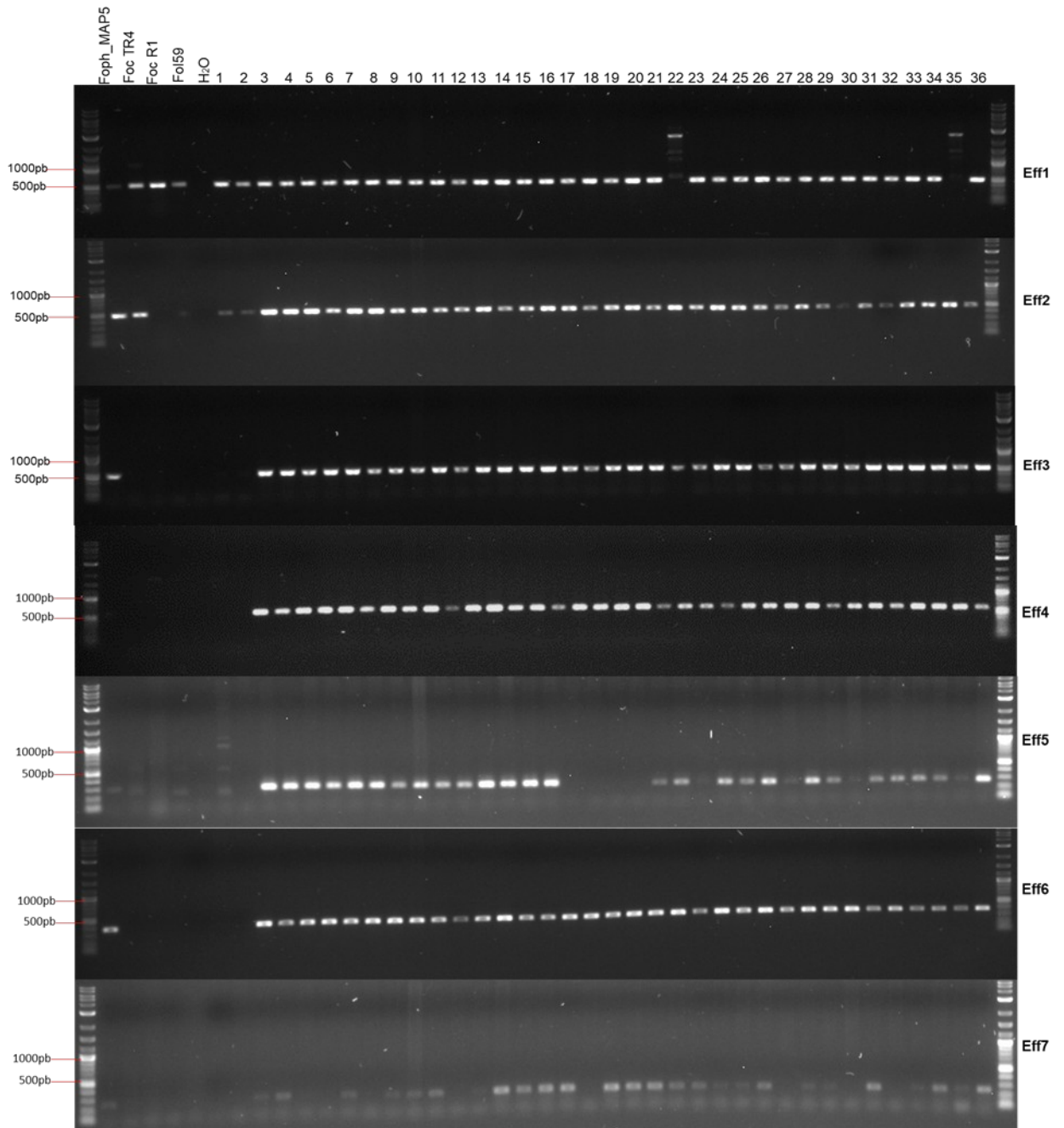


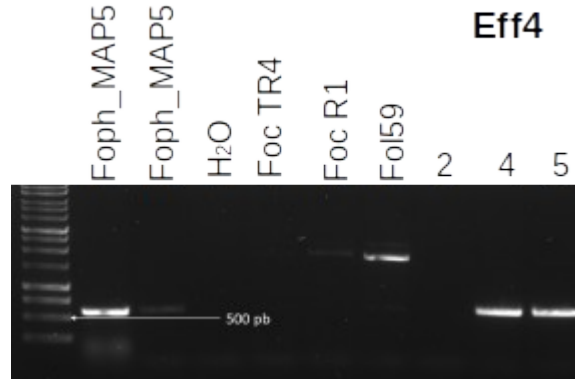
A.



**B.**



**C.**



**Figure S1.** Confirmation of the novel *Foph* candidate effectors by PCR amplification **A.** Homologue of SIX13 **B.** Seven *Foph* novel candidate effectors (Eff1 to 7), showing their presence in a panel of 36 *F. oxysporum* isolates associated to the cape gooseberry crop (Table S2). **C.** Eff4 confirming its presence on *Foph\_MAP5*. Control DNA: *Foph\_MAP5*, Colombian isolates of *Foc\_TR4* (tropical race 4), *Foc\_R1* (race1) and *FocI59*. PCR product visualization was carried out following electrophoresis in a 1% agarose gel.