

Figure S1. Gating strategy to confirm the purity of NK cells after isolation from PBMCs. After gating to single cells and CD45+ cells, NK cells were detected as CD3<sup>-</sup>/CD56<sup>+</sup> cells. The purity of NK cells was >90 % after isolation from PBMCs.

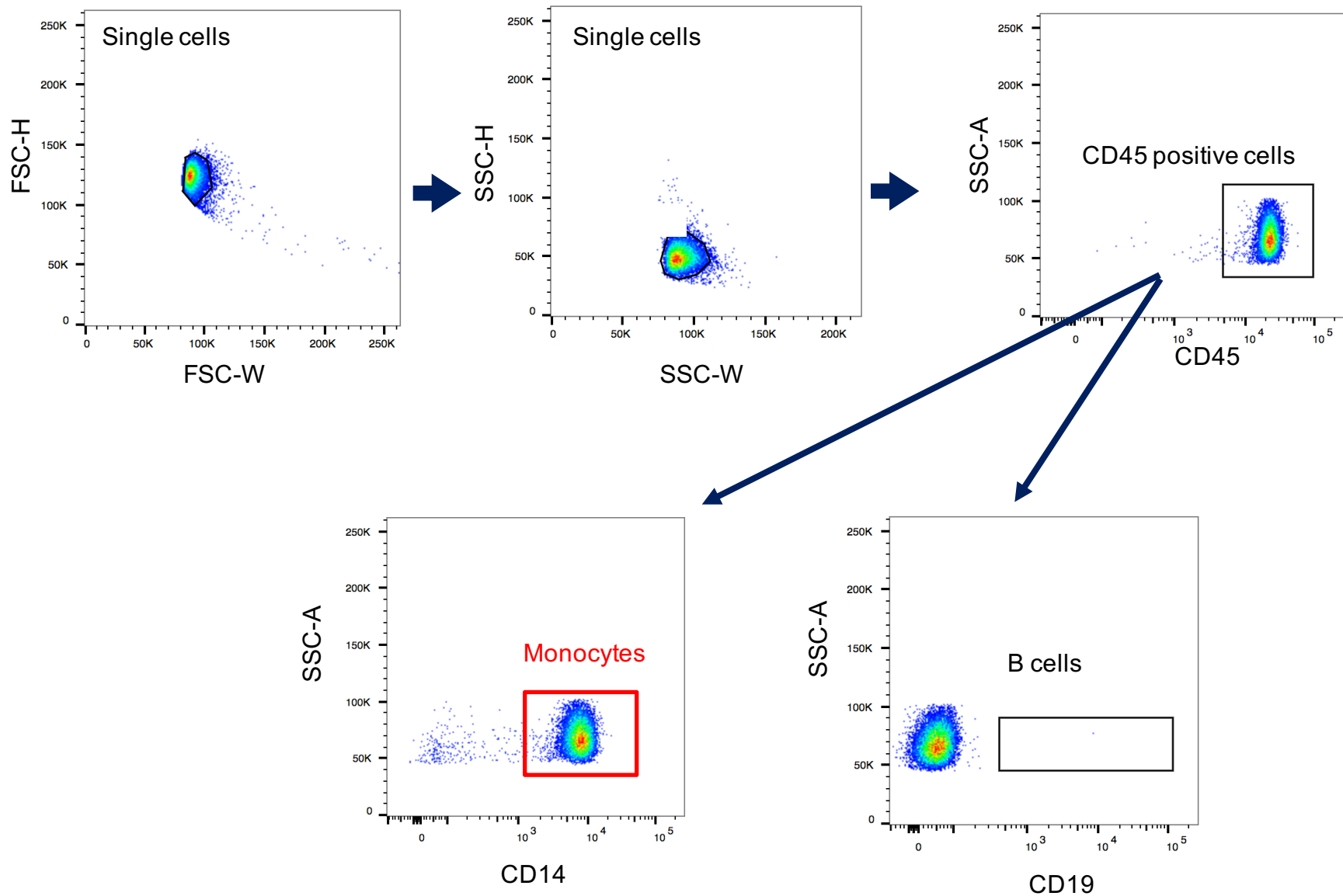


Figure S2. Gating strategy to confirm the purity of monocytes after isolation from PBMCs. After gating to single cells and CD45<sup>+</sup> cells, monocytes were detected as CD14<sup>+</sup> cells. The purity of monocytes was >90 % after isolation from PBMCs.

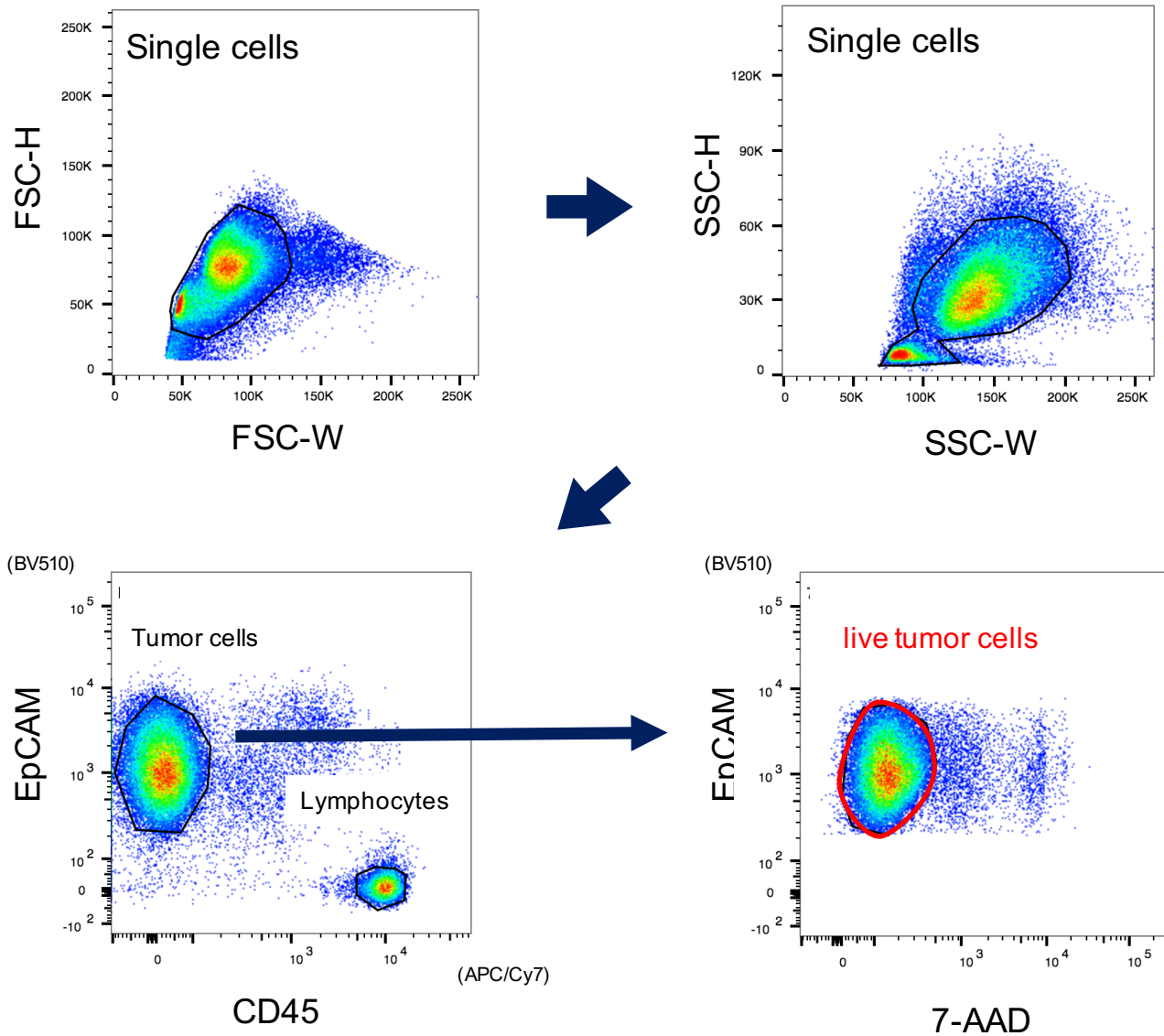


Figure S3. Gating strategy to discriminate live GC cells co-cultured with immune cells after Tmab treatment. After gating to single cells, EpCAM<sup>+</sup> cells were gated to discriminate GC cells. The 7-AAD<sup>-</sup> cells were then further gated to discriminate live GC.

**Table S1.** Multicolor panels for multicolor flow cytometry analysis

1. Lymphocyte surface panel				
	Cell surface marker	Cat.	Isotype control	Cat.
FITC	CD14	325603	M IgG1, κ	400109
PE	CD66b	305106	M IgM, κ	401609
PerCP/Cy5.5	CD3	300429	M IgG1, κ	400149
PE/Cy7	CD4	344611	M IgG1, κ	400125
APC	CD8	344721	M IgG1, κ	400121
APC/Cy7	CD45	304014	M IgG1, κ	400127
BV421	CD56	318327	M IgG1, κ	400157
BV510	CD19	302241	M IgG1, κ	400171
2. Tumor cell surface panel				
	Cell surface marker	Cat.	Isotype control	Cat.
FITC	CD340 (erb/HER-2)	324404	M IgG1, κ	400109
APC	CD274 (PD-L1)	393610	M IgG1, κ	400121
APC/Cy7	CD45	368515	CD45	368515
BV510	EpCAM	324235	EpCAM	324235