

Supplement 1 Search Details

PubMed

#1 Statins

("atorvastatin"[MeSH] OR "fluvastatin"[MeSH] OR "lovastatin"[MeSH] OR "pravastatin"[MeSH] OR "rosuvastatin calcium"[MeSH] OR "simvastatin"[MeSH] OR "pitavastatin"[Supplementary Concept] OR "atorvastatin"[tiab] OR "fluvastatin"[tiab] OR "lovastatin"[tiab] OR "pravastatin"[tiab] OR "rosuvastatin"[tiab] OR "simvastatin"[tiab] OR "pitavastatin"[tiab] OR "134523-00-5"[tiab] OR "134523-03-8"[tiab] OR "147098-18-8"[tiab] OR "147098-20-2"[tiab] OR "147526-32-7"[tiab] OR "6Methylcompactin"[tiab] OR "6-Methylcompactin"[tiab] OR "75330-75-5"[tiab] OR "79902-63-9"[tiab] OR "81093-37-0"[tiab] OR "81131-70-6"[tiab] OR "93957-54-1"[tiab] OR "alipza"[tiab] OR "altocor"[tiab] OR "altoprev"[tiab] OR "aplactin"[tiab] OR "Apo-Pravastatin"[tiab] OR "artein"[tiab] OR "astator"[tiab] OR "astin"[tiab] OR "ator"[tiab] OR "atorab"[tiab] OR "atoris"[tiab] OR "atorlip"[tiab] OR "atorvavidiv"[tiab] OR "atorvastine"[tiab] OR "atostin"[tiab] OR "atovans"[tiab] OR "atovaro"[tiab] OR "avastinee"[tiab] OR "belmalip"[tiab] OR "belvas"[tiab] OR "birotin"[tiab] OR "bristacol"[tiab] OR "canef"[tiab] OR "cardyl"[tiab] OR "cholespar"[tiab] OR "cholestat"[tiab] OR "cholestra"[tiab] OR "ci981"[tiab] OR "CI-981"[tiab] OR "clinfar"[tiab] OR "colastatina"[tiab] OR "colemine"[tiab] OR "colestricon"[tiab] OR "coupet"[tiab] OR "covastin"[tiab] OR "cranoc"[tiab] OR "crestor"[tiab] OR "cs514"[tiab] OR "CS-514"[tiab] OR "cysin"[tiab] OR "denan"[tiab] OR "digaril"[tiab] OR "elisor"[tiab] OR "ellanco"[tiab] OR "elstatin"[tiab] OR "epatostantin"[tiab] OR "epistatin"[tiab] OR "epri"[tiab] OR "eptastatin"[tiab] OR "eptastatine"[tiab] OR "esvat"[tiab] OR "ethicol"[tiab] OR "eucor"[tiab] OR "ezallor"[tiab] OR "Fluindostatin"[tiab] OR "fluvastatina"[tiab] OR "fractal(drug)"[tiab] OR "fractallp"[tiab] OR "glustar"[tiab] OR "ifistatin"[tiab] OR "itavastatin"[tiab] OR "jabastatina"[tiab] OR "kavelor"[tiab] OR "kenstatin"[tiab] OR "klonastin"[tiab] OR "kolestevan"[tiab] OR "1654969"[tiab] OR "1644128"[tiab] OR "Lescol"[tiab] OR "leucol"[tiab] OR "Lin-Pravastatin"[tiab] OR "lipaxan"[tiab] OR "lipcut"[tiab] OR "lipdip"[tiab] OR "lipecor"[tiab] OR "lipemol"[tiab] OR "lipex"[tiab] OR "lipibec"[tiab] OR "lipidal"[tiab] OR "lipinorm"[tiab] OR "lipitor"[tiab] OR "lipivas"[tiab] OR "liplat"[tiab] OR "liponorm"[tiab] OR "lipostat"[tiab] OR "lipovas"[tiab] OR "lippiza"[tiab] OR "liprevil"[tiab] OR "liprimar"[tiab] OR "liptonorm"[tiab] OR "livalo"[tiab] OR "livazo"[tiab] OR "lochol"[tiab] OR "locol"[tiab] OR "lodales"[tiab] OR "lofacol"[tiab] OR "lomar"[tiab] OR "lostatin"[tiab] OR "lovacel"[tiab] OR "lovacol"[tiab] OR "lovahexal"[tiab] OR "lovalip"[tiab] OR "lovalord"[tiab] OR "lovastan"[tiab] OR "lovasterol"[tiab] OR "lovastin"[tiab] OR "lovatadin"[tiab] OR "lowachol"[tiab] OR "lowlipen"[tiab] OR "lozutin"[tiab] OR "maxudin"[tiab] OR "medipo"[tiab] OR "medostatin"[tiab] OR "mersivas"[tiab] OR "merteni"[tiab] OR "mevacor"[tiab] OR "mevalotin"[tiab] OR "meverstin"[tiab] OR "mevinacor"[tiab] OR "Mevinolin"[tiab] OR "minuscol"[tiab] OR "mk0803"[tiab] OR "mk733"[tiab] OR "MK-733"[tiab] OR "mk803"[tiab] OR "MK-803"[tiab] OR "monacolink"[tiab] OR "monakolink"[tiab] OR "msd803"[tiab] OR "neolipid"[tiab] OR "nergadan"[tiab] OR "nikita"[tiab] OR "nisvastatin"[tiab] OR "nk104"[tiab] OR "NK-104"[tiab] OR "nks104"[tiab] OR "normofat"[tiab] OR "norvastina"[tiab] OR "novalas"[tiab] OR "Nu-Pravastatin"[tiab] OR "obradon"[tiab] OR "orbeos"[tiab] OR "orovas"[tiab] OR "ovasta"[tiab] OR "P872441"[tiab] OR "P-872441"[tiab] OR "pantok"[tiab] OR "pitava"[tiab] OR "prareduct"[tiab] OR "prascolend"[tiab] OR "prastan"[tiab] OR "prasterol"[tiab] OR "prava"[tiab] OR "pravachol"[tiab] OR "pravacol"[tiab] OR "pravalam"[tiab] OR "pravalich"[tiab] OR "pravaselect"[tiab] OR "pravasin"[tiab] OR "pravasine"[tiab] OR "pravator"[tiab] OR "pravyl"[tiab] OR "prevencor"[tiab] OR "provisacor"[tiab] OR "rechol"[tiab] OR "ribar"[tiab] OR "RMS431"[tiab] OR "RMS-431"[tiab] OR "rodatin"[tiab] OR "rostat"[tiab] OR "rosudia"[tiab] OR "rosumop"[tiab] OR "rosuvador"[tiab] OR "rosuvas"[tiab] OR "rosuvastatina"[tiab] OR "rosuvastatine"[tiab] OR "roswera"[tiab] OR "rovacor"[tiab] OR "roxera"[tiab] OR "rozuva-teva"[tiab] OR "s4522"[tiab] OR "sanaprav"[tiab] OR "selectin(drug)"[tiab] OR "selektine"[tiab] OR "selipran"[tiab] OR "simbado"[tiab] OR "simcard"[tiab] OR "simchol"[tiab] OR "simestat"[tiab] OR "simovil"[tiab] OR "simtin"[tiab] OR "simva"[tiab] OR "simvacor"[tiab] OR "simvahex"[tiab] OR "simvalord"[tiab] OR "simvatar"[tiab] OR "simvastatina"[tiab] OR "simvastatine"[tiab] OR "simvata"[tiab] OR "simvatin"[tiab] OR

"simvor"[tiab] OR "simvotin"[tiab] OR "sinvacor"[tiab] OR "sinvastatin"[tiab] OR "sinvinolin"[tiab] OR "sivastin"[tiab] OR "sortis"[tiab] OR "solvasta"[tiab] OR "SQ31,000"[tiab] OR "SQ-31,000"[tiab] OR "sq31000"[tiab] OR "SQ-31000"[tiab] OR "sri62320"[tiab] OR "stanidine"[tiab] OR "starzoco"[tiab] OR "statorva"[tiab] OR "storvas"[tiab] OR "synvinolin"[tiab] OR "tahor"[tiab] OR "taucor"[tiab] OR "torio"[tiab] OR "torvast"[tiab] OR "totalip"[tiab] OR "trolise"[tiab] OR "valemia"[tiab] OR "vasilip"[tiab] OR "vasopran"[tiab] OR "vasotenal"[tiab] OR "vasten"[tiab] OR "vastin"[tiab] OR "vazim"[tiab] OR "vezeptra"[tiab] OR "vidastat"[tiab] OR "xarator"[tiab] OR "xeter"[tiab] OR "xipral"[tiab] OR "XU62-320"[tiab] OR "xu62320"[tiab] OR "XU-62320"[tiab] OR "ym548"[tiab] OR "zahron"[tiab] OR "zaranta"[tiab] OR "zarator"[tiab] OR "zd4522"[tiab] OR "zimmex"[tiab] OR "zocor"[tiab] OR "zocord"[tiab] OR "zovast"[tiab] OR "zypitamag"[tiab])

#2 Coronary Artery Disease

("Myocardial Ischemia"[MeSH] OR "Acute Coronary Syndrome*" [tiab] OR "Angina*" [tiab] OR "Anginal Attack" [tiab] OR "Angor Pectoris" [tiab] OR "Arteriosclerotic Cardiac" [tiab] OR "Arteriosclerotic Heart" [tiab] OR "Atherosclerotic Cardiovascular" [tiab] OR "Atherosclerotic Heart" [tiab] OR "Cardiac Infarct*" [tiab] OR "Cardial Infarct*" [tiab] OR "Cardiovascular Stroke*" [tiab] OR "Coronary Arterioscleroses" [tiab] OR "Coronary Arteriosclerosis" [tiab] OR "Coronary Artery Insufficiency" [tiab] OR "Coronary Artery Occlusive" [tiab] OR "Coronary Artery Sclerosis" [tiab] OR "Coronary Atheroscleroses" [tiab] OR "Coronary Atherosclerosis" [tiab] OR "Coronary Cardiosclerosis" [tiab] OR "Coronary Heart" [tiab] OR "Coronary Insufficiency" [tiab] OR "Coronary Occlusive" [tiab] OR "Coronary Sclerosis" [tiab] OR "Heart Arteriosclerosis" [tiab] OR "Heart Atherosclerosis" [tiab] OR "Heart Attack*" [tiab] OR "Heart Infarct*" [tiab] OR "Heart Micro Infarct*" [tiab] OR "Heart Muscle Infarct*" [tiab] OR "Ischaemia Heart" [tiab] OR "Ischaemic Cardiac" [tiab] OR "Ischaemic Cardial" [tiab] OR "Ischaemic Cardiomyopathy" [tiab] OR "Ischaemic Cardiopathy" [tiab] OR "Ischaemic Heart" [tiab] OR "Ischemia Heart" [tiab] OR "Ischemic Cardiac" [tiab] OR "Ischemic Cardial" [tiab] OR "Ischemic Cardiomyopathy" [tiab] OR "Ischemic Cardiopathy" [tiab] OR "Ischemic Heart" [tiab] OR "Myocardial Infarct*" [tiab] OR "Myocardial Ischemia*" [tiab] OR "Myocardial Preinfarction*" [tiab] OR "Myocardium Infarct*" [tiab] OR "Premonitory Infarction Sign" [tiab] OR "Stenocardia*" [tiab] OR "Subendocardial Infarct*" [tiab])

#3 RCT Filter

(randomized controlled trial[pt] OR controlled clinical trial[pt] OR randomized[tiab] OR placebo[tiab] OR clinical trials as topic[mesh:noexp] OR randomly[tiab] OR trial[ti] NOT (animals[mh] NOT humans [mh]))

#4 Language

English[la]

#5 Publication Date

(1980/01/01[Date - Publication] : 2019/12/31[Date - Publication])

#6 Study from Mainland China

(China[AD] OR Heilongjiang[AD] OR Hei Long Jiang[AD] OR Jilin[AD] OR Ji Lin[AD] OR Liaoning[AD] OR Liao Ning[AD] OR Inner Mongolia[AD] OR Neimenggu[AD] OR Nei Meng Gu[AD] OR Beijing[AD] OR Peking[AD] OR Bei Jing[AD] OR Tianjin[AD] OR Tian Jin[AD] OR Shandong[AD] OR Shan Dong[AD] OR Jiangsu[AD] OR Jiang Su[AD] OR Shanghai[AD] OR Shang Hai[AD] OR Zhejiang[AD] OR Zhe Jiang[AD] OR Fujian[AD] OR Fu Jian[AD] OR Anhui[AD] OR An Hui[AD] OR Jiangxi[AD] OR Jiang Xi[AD] OR Shaanxi[AD] OR Shanxi[AD] OR Shan Xi[AD] OR Guangdong[AD] OR Guang Dong[AD] OR Guangxi[AD] OR Guang Xi[AD] OR Guizhou[AD] OR Gui Zhou[AD] OR Ningxia[AD] OR Ning Xia[AD] OR Xinjiang[AD] OR Xin Jiang[AD] OR Tibet[AD] OR Xizang[AD] OR Xi Zang[AD] OR Qinghai[AD] OR Qing Hai[AD] OR Sichuan[AD] OR Si Chuan[AD] OR Chongqing[AD] OR Chong Qing[AD] OR Hubei[AD] OR Hu Bei[AD] OR Hunan[AD])

OR Hu Nan[AD] OR Hainan[AD] OR Hai Nan[AD] OR Hebei[AD] OR He Bei[AD] OR Henan[AD] OR He Nan[AD] OR Gansu[AD] OR Gan Su[AD] OR Yunnan[AD] OR Yun Nan[AD]]

#1 AND #2 AND #3 AND #4 AND #5 AND #6

Embase

#1 Statins

('atorvastatin'/exp OR 'fluindostatin'/exp OR 'mevinolin'/exp OR 'pravastatin'/exp OR 'rosuvastatin'/exp OR 'simvastatin'/exp OR 'pitavastatin'/exp OR ('atorvastatin' OR 'fluvastatin' OR 'lovastatin' OR 'pravastatin' OR 'rosuvastatin' OR 'simvastatin' OR 'pitavastatin' OR '134523-00-5' OR '134523-03-8' OR '147098-18-8' OR '147098-20-2' OR '147526-32-7' OR '6Methylcompactin' OR '6-Methylcompactin' OR '75330-75-5' OR '79902-63-9' OR '81093-37-0' OR '81131-70-6' OR '93957-54-1' OR 'alipza' OR 'altocor' OR 'altoprev' OR 'aplactin' OR 'Apo-Pravastatin' OR 'artein' OR 'astator' OR 'astin' OR 'ator' OR 'atorab' OR 'atoris' OR 'atorlip' OR 'atorvavidiv' OR 'atorvastine' OR 'atostin' OR 'atovans' OR 'atovaryl' OR 'avastinee' OR 'belmalip' OR 'belvas' OR 'birotin' OR 'bristacol' OR 'canef' OR 'cardyl' OR 'cholespar' OR 'cholestat' OR 'cholestra' OR 'ci981' OR 'CI-981' OR 'clinfar' OR 'colastatina' OR 'colemine' OR 'colestricon' OR 'coupet' OR 'covastin' OR 'cranoc' OR 'crestor' OR 'cs514' OR 'CS-514' OR 'cysin' OR 'denan' OR 'digaril' OR 'elisor' OR 'ellanco' OR 'elstatin' OR 'epatostantin' OR 'epistatin' OR 'epri' OR 'eptastatin' OR 'eptastatine' OR 'esvat' OR 'ethicol' OR 'eucor' OR 'ezallor' OR 'Fluindostatin' OR 'fluvastatina' OR 'fractal(drug)' OR 'fractalp' OR 'glustar' OR 'ifistatin' OR 'itavastatin' OR 'jabastatina' OR 'kavelor' OR 'kenstatin' OR 'klonastin' OR 'kolestevan' OR '1654969' OR '1644128' OR 'Lescol' OR 'leucol' OR 'Lin-Pravastatin' OR 'lipaxan' OR 'lipcut' OR 'lipdip' OR 'lipecor' OR 'lipemo' OR 'lipex' OR 'lipibec' OR 'lipidal' OR 'lipinorm' OR 'lipitor' OR 'lipivas' OR 'liplat' OR 'liponorm' OR 'lipostat' OR 'lipovas' OR 'lippiza' OR 'liprevil' OR 'liprimar' OR 'liptonorm' OR 'livalo' OR 'livazo' OR 'lochol' OR 'locol' OR 'lodales' OR 'lofacol' OR 'lomar' OR 'lostatin' OR 'lovacel' OR 'lovacol' OR 'lovahexal' OR 'lovalip' OR 'lovalord' OR 'lovastan' OR 'lovasterol' OR 'lovastin' OR 'lovatadin' OR 'lowachol' OR 'lowlipen' OR 'lozutin' OR 'maxudin' OR 'medipo' OR 'medostatine' OR 'mersivas' OR 'mertenil' OR 'mevacor' OR 'mevalotin' OR 'meverstin' OR 'mevinacor' OR 'Mevinolin' OR 'minuscol' OR 'mk0803' OR 'mk733' OR 'MK-733' OR 'mk803' OR 'MK-803' OR 'monacolinK' OR 'monakolink' OR 'msd803' OR 'neolipid' OR 'nergadan' OR 'nikita' OR 'nisvastatin' OR 'nk104' OR 'NK-104' OR 'nks104' OR 'normofat' OR 'nor-vastina' OR 'novalas' OR 'Nu-Pravastatin' OR 'obradon' OR 'orbeos' OR 'orovas' OR 'ovasta' OR 'P872441' OR 'P-872441' OR 'pantok' OR 'pitava' OR 'prareduct' OR 'prascolend' OR 'prastan' OR 'prasterol' OR 'prava' OR 'pravachol' OR 'pravacol' OR 'pravalam' OR 'pravalich' OR 'pravaselect' OR 'pravasin' OR 'pravasine' OR 'pravator' OR 'pravyl' OR 'prevencor' OR 'provisacor' OR 'rechol' OR 'ribar' OR 'RMS431' OR 'RMS-431' OR 'rodatin' OR 'rostat' OR 'rosudia' OR 'rosumop' OR 'rosuvador' OR 'rosuvas' OR 'rosuvastatina' OR 'rosuvastatine' OR 'roswera' OR 'rovacor' OR 'roxera' OR 'rozuva-teva' OR 's4522' OR 'sanaprav' OR 'selectin(drug)' OR 'selektine' OR 'selipran' OR 'simbado' OR 'simcard' OR 'simchol' OR 'simestat' OR 'simovil' OR 'simtin' OR 'simva' OR 'simvacor' OR 'simvaheh' OR 'simvalord' OR 'simvatar' OR 'simvastatina' OR 'simvastatine' OR 'simvata' OR 'simvatin' OR 'simvor' OR 'simvotin' OR 'sinvacor' OR 'sinvastatin' OR 'sinvinolin' OR 'sivastin' OR 'sortis' OR 'solvasta' OR 'SQ31,000' OR 'SQ-31,000' OR 'sq31000' OR 'SQ-31000' OR 'sri62320' OR 'stanidine' OR 'starzoco' OR 'statorva' OR 'storvas' OR 'synvinolin' OR 'tahor' OR 'taucor' OR 'torio' OR 'torvast' OR 'totalip' OR 'trolise' OR 'valemia' OR 'vasilip' OR 'vasopran' OR 'vasotenal' OR 'vasten' OR 'vastin' OR 'vazim' OR 'vezeptra' OR 'vidastat' OR 'xarator' OR 'xeter' OR 'xipral' OR 'XU62-320' OR 'xu62320' OR 'XU-62320' OR 'ym548' OR 'zahron' OR 'zaranta' OR 'zarator' OR 'zd4522' OR 'zimmex' OR 'zocor' OR 'zocord' OR 'zovast' OR 'zypitamag'):ti,ab)

#2 Coronary Artery Disease

('Ischemic Heart Disease'/exp OR ('Acute Coronary Syndrome*' OR 'Angina*' OR 'Anginal Attack' OR 'Angor Pectoris' OR 'Arteriosclerotic Cardiac' OR 'Arteriosclerotic Heart' OR 'Atherosclerotic Cardiovascular' OR 'Atherosclerotic Heart' OR 'Cardiac Infarct*' OR 'Cardial Infarct*' OR 'Cardiovascular Stroke*' OR 'Coronary Arterioscleroses' OR 'Coronary Arteriosclerosis' OR 'Coronary Artery Insufficiency' OR 'Coronary Artery Occlusive' OR 'Coronary Artery Sclerosis' OR 'Coronary Atheroscleroses' OR 'Coronary Atherosclerosis' OR 'Coronary Cardiosclerosis' OR 'Coronary Heart' OR 'Coronary Insufficiency' OR 'Coronary Occlusive' OR 'Coronary Sclerosis' OR 'Heart Arteriosclerosis' OR 'Heart Atherosclerosis' OR 'Heart Attack*' OR 'Heart Infarct*' OR 'Heart Micro Infarct*' OR 'Heart Muscle Infarct*' OR 'Ischaemia Heart' OR 'Ischaemic Cardiac' OR 'Ischaemic Cardial' OR 'Ischaemic Cardiomyopathy' OR 'Ischaemic Cardiopathy' OR 'Ischaemic Heart' OR 'Ischemia Heart' OR 'Ischemic Cardiac' OR 'Ischemic Cardial' OR 'Ischemic Cardiomyopathy' OR 'Ischemic Cardiopathy' OR 'Ischemic Heart' OR 'Myocardial Infarct*' OR 'Myocardial Ischemia*' OR 'Myocardial Preinfarction*' OR 'Myocardium Infarct*' OR 'Premonitory Infarction Sign' OR 'Stenocardia*' OR 'Subendocardial Infarct*'):ti,ab)

#3 RCT Filter

(random*:ab,ti OR placebo*:de,ab,ti OR (double NEXT/1 blind*):ab,ti)

#4 Language

English:la

#5 Publication Date

[1970-2019]/py

#6 Study from Mainland China

('China' OR 'Heilongjiang' OR 'Hei Long Jiang' OR 'Jilin' OR 'Ji Lin' OR 'Liaoning' OR 'Liao Ning' OR 'Inner Mongolia' OR 'Neimenggu' OR 'Nei Meng Gu' OR 'Beijing' OR 'Peking' OR 'Bei Jing' OR 'Tianjin' OR 'Tian Jin' OR 'Shandong' OR 'Shan Dong' OR 'Jiangsu' OR 'Jiang Su' OR 'Shanghai' OR 'Shang Hai' OR 'Zhejiang' OR 'Zhe Jiang' OR 'Fujian' OR 'Fu Jian' OR 'Anhui' OR 'An Hui' OR 'Jiangxi' OR 'Jiang Xi' OR 'Shaanxi' OR 'Shanxi' OR 'Shan Xi' OR 'Guangdong' OR 'Guang Dong' OR 'Guangxi' OR 'Guang Xi' OR 'Guizhou' OR 'Gui Zhou' OR 'Ningxia' OR 'Ning Xia' OR 'Xinjiang' OR 'Xin Jiang' OR 'Tibet' OR 'Xizang' OR 'Xi Zang' OR 'Qinghai' OR 'Qing Hai' OR 'Sichuan' OR 'Si Chuan' OR 'Chongqing' OR 'Chong Qing' OR 'Hubei' OR 'Hu Bei' OR 'Hunan' OR 'Hu Nan' OR 'Hainan' OR 'Hai Nan' OR 'Hebei' OR 'He Bei' OR 'Henan' OR 'He Nan' OR 'Gansu' OR 'Gan Su' OR 'Yunnan' OR 'Yun Nan'):ff)

#1 AND #2 AND #3 AND #4 AND #5 AND #6

CENTRAL

#1 Statins

([mh "atorvastatin"] OR [mh "Fluvastatin"] OR [mh "lovastatin"] OR [mh "pravastatin"] OR [mh "Rosuvastatin Calcium"] OR [mh "simvastatin"] OR "atorvastatin":ti,ab OR "fluvastatin":ti,ab OR "lovastatin":ti,ab OR "pravastatin":ti,ab OR "rosuvastatin":ti,ab OR "simvastatin":ti,ab OR "pitavastatin":ti,ab OR "6Methylcompactin":ti,ab OR "alipza":ti,ab OR "altacor":ti,ab OR "altoprev":ti,ab OR "aplactin":ti,ab OR "artein":ti,ab OR "astator":ti,ab OR "astin":ti,ab OR "ator":ti,ab OR "atorab":ti,ab OR "atoris":ti,ab OR "atorlip":ti,ab OR "atorvadivid":ti,ab OR "atorvastine":ti,ab OR "atostin":ti,ab OR "atovans":ti,ab OR "atovarol":ti,ab OR "avastinee":ti,ab OR "belmalip":ti,ab OR "belvas":ti,ab OR "birotin":ti,ab OR "bristacol":ti,ab OR "canef":ti,ab OR "cardyl":ti,ab OR "cholespar":ti,ab OR "cholestat":ti,ab OR "cholestra":ti,ab OR "ci981":ti,ab OR "clinfar":ti,ab OR "colastatina":ti,ab OR "colemine":ti,ab OR "colestricon":ti,ab OR "coupet":ti,ab OR

"covastin":ti,ab OR "cranoc":ti,ab OR "crestor":ti,ab OR "cs514":ti,ab OR "cysin":ti,ab OR "denan":ti,ab OR
 "digaril":ti,ab OR "elisor":ti,ab OR "ellanco":ti,ab OR "elstatin":ti,ab OR "epatostantin":ti,ab OR "epistatin":ti,ab OR
 "epri":ti,ab OR "eptastatin":ti,ab OR "eptastatine":ti,ab OR "esvat":ti,ab OR "ethicol":ti,ab OR "eucor":ti,ab OR
 "ezallor":ti,ab OR "Fluindostatin":ti,ab OR "fluvastatina":ti,ab OR "fractal(drug)":ti,ab OR "fractallp":ti,ab OR
 "glustar":ti,ab OR "ifistatin":ti,ab OR "itavastatin":ti,ab OR "jabastatina":ti,ab OR "kavelor":ti,ab OR
 "kenstatin":ti,ab OR "klonastin":ti,ab OR "kolestevan":ti,ab OR "l654969":ti,ab OR "l644128":ti,ab OR "Lescol":ti,ab
 OR "leucol":ti,ab OR "lipaxan":ti,ab OR "lipcut":ti,ab OR "lipdip":ti,ab OR "lipecor":ti,ab OR "lipemol":ti,ab OR
 "lipex":ti,ab OR "lipibec":ti,ab OR "lipidal":ti,ab OR "lipinorm":ti,ab OR "lipitor":ti,ab OR "lipivas":ti,ab OR
 "liplat":ti,ab OR "liponorm":ti,ab OR "lipostat":ti,ab OR "lipovas":ti,ab OR "lippiza":ti,ab OR "liprevil":ti,ab OR
 "liprimar":ti,ab OR "liptonorm":ti,ab OR "livalo":ti,ab OR "livazo":ti,ab OR "lochol":ti,ab OR "locol":ti,ab OR
 "lodales":ti,ab OR "lofacol":ti,ab OR "lomar":ti,ab OR "lostatin":ti,ab OR "lovacel":ti,ab OR "lovacol":ti,ab OR
 "lovahexal":ti,ab OR "lovalip":ti,ab OR "lovalord":ti,ab OR "lovastan":ti,ab OR "lovasterol":ti,ab OR "lovastin":ti,ab
 OR "lovatadin":ti,ab OR "lowachol":ti,ab OR "lowlipen":ti,ab OR "lozutin":ti,ab OR "maxudin":ti,ab OR
 "medipo":ti,ab OR "medostatin":ti,ab OR "mersivas":ti,ab OR "mertenil":ti,ab OR "mevacor":ti,ab OR
 "mevalotin":ti,ab OR "meverstin":ti,ab OR "mevinacor":ti,ab OR "Mevinolin":ti,ab OR "minuscol":ti,ab OR
 "mk0803":ti,ab OR "mk733":ti,ab OR "mk803":ti,ab OR "monacolinK":ti,ab OR "monakolink":ti,ab OR
 "msd803":ti,ab OR "neolipid":ti,ab OR "nergadan":ti,ab OR "nikita":ti,ab OR "nisvastatin":ti,ab OR "nk104":ti,ab OR
 "nks104":ti,ab OR "normofat":ti,ab OR "novalas":ti,ab OR "obradon":ti,ab OR "orbeos":ti,ab OR "orovas":ti,ab OR
 "ovasta":ti,ab OR "P872441":ti,ab OR "pantok":ti,ab OR "pitava":ti,ab OR "prareduct":ti,ab OR "prascolend":ti,ab
 OR "prastan":ti,ab OR "prasterol":ti,ab OR "prava":ti,ab OR "pravachol":ti,ab OR "pravacol":ti,ab OR
 "pravalam":ti,ab OR "pravalich":ti,ab OR "pravaselect":ti,ab OR "pravasin":ti,ab OR "pravasine":ti,ab OR
 "pravator":ti,ab OR "pravyl":ti,ab OR "prevencor":ti,ab OR "provisacor":ti,ab OR "rechol":ti,ab OR "ribar":ti,ab OR
 "RMS431":ti,ab OR "rodatin":ti,ab OR "rostat":ti,ab OR "rosudia":ti,ab OR "rosumop":ti,ab OR "rosuvador":ti,ab
 OR "rosuvas":ti,ab OR "rosuvastatina":ti,ab OR "rosuvastatine":ti,ab OR "roswera":ti,ab OR "rovacor":ti,ab OR
 "roxera":ti,ab OR "s4522":ti,ab OR "sanaprav":ti,ab OR "selectin(drug)":ti,ab OR "selektine":ti,ab OR
 "selipran":ti,ab OR "simbado":ti,ab OR "simcard":ti,ab OR "simchol":ti,ab OR "simestat":ti,ab OR "simovil":ti,ab OR
 "simtin":ti,ab OR "simva":ti,ab OR "simvacor":ti,ab OR "simvahex":ti,ab OR "simvalord":ti,ab OR "simvastar":ti,ab
 OR "simvastatina":ti,ab OR "simvastatine":ti,ab OR "simvata":ti,ab OR "simvatin":ti,ab OR "simvor":ti,ab OR
 "simvotin":ti,ab OR "sinvacor":ti,ab OR "sinvastatin":ti,ab OR "sinvinolin":ti,ab OR "sivastin":ti,ab OR "sortis":ti,ab
 OR "sorvasta":ti,ab OR "SQ31,000":ti,ab OR "sq31000":ti,ab OR "sri62320":ti,ab OR "stanidine":ti,ab OR
 "starzoco":ti,ab OR "statorva":ti,ab OR "storvas":ti,ab OR "synvinolin":ti,ab OR "tahor":ti,ab OR "taucor":ti,ab OR
 "torio":ti,ab OR "torvast":ti,ab OR "totalip":ti,ab OR "trolise":ti,ab OR "valemia":ti,ab OR "vasilip":ti,ab OR
 "vasopran":ti,ab OR "vasotenal":ti,ab OR "vasten":ti,ab OR "vastin":ti,ab OR "vazim":ti,ab OR "vezeptra":ti,ab OR
 "vidastat":ti,ab OR "xarator":ti,ab OR "xeter":ti,ab OR "xipral":ti,ab OR "xu62320":ti,ab OR "ym548":ti,ab OR
 "zahron":ti,ab OR "zaranta":ti,ab OR "zarator":ti,ab OR "zd4522":ti,ab OR "zimmex":ti,ab OR "zocor":ti,ab OR
 "zocord":ti,ab OR "zovast":ti,ab OR "zypitamag":ti,ab)

#2 Coronary Artery Disease

([mh " Myocardial Ischemia "] OR "Acute Coronary Syndrome*":ti,ab OR "Angina*":ti,ab OR "Anginal Attack":ti,ab
 OR "Angor Pectoris":ti,ab OR "Arteriosclerotic Cardiac":ti,ab OR "Arteriosclerotic Heart":ti,ab OR "Atherosclerotic
 Cardiovascular":ti,ab OR "Atherosclerotic Heart":ti,ab OR "Cardiac Infarct*":ti,ab OR "Cardial Infarct*":ti,ab OR
 "Cardiovascular Stroke*":ti,ab OR "Coronary Arterioscleroses":ti,ab OR "Coronary Arteriosclerosis":ti,ab OR
 "Coronary Artery Insufficiency":ti,ab OR "Coronary Artery Occlusive":ti,ab OR "Coronary Artery Sclerosis":ti,ab OR
 "Coronary Atheroscleroses":ti,ab OR "Coronary Atherosclerosis":ti,ab OR "Coronary Cardiosclerosis":ti,ab OR
 "Coronary Heart":ti,ab OR "Coronary Insufficiency":ti,ab OR "Coronary Occlusive":ti,ab OR "Coronary
 Sclerosis":ti,ab OR "Heart Arteriosclerosis":ti,ab OR "Heart Atherosclerosis":ti,ab OR "Heart Attack*":ti,ab OR
 "Heart Infarct*":ti,ab OR "Heart Micro Infarct*":ti,ab OR "Heart Muscle Infarct*":ti,ab OR "Ischaemia Heart":ti,ab
 OR "Ischaemic Cardiac":ti,ab OR "Ischaemic Cardial":ti,ab OR "Ischaemic Cardiomyopathy":ti,ab OR "Ischaemic

Cardiopathy":ti,ab OR "Ischaemic Heart":ti,ab OR "Ischemia Heart":ti,ab OR "Ischemic Cardiac":ti,ab OR "Ischemic Cardial":ti,ab OR "Ischemic Cardiomyopathy":ti,ab OR "Ischemic Cardiopathy":ti,ab OR "Ischemic Heart":ti,ab OR "Myocardial Infarct*":ti,ab OR "Myocardial Ischemia*":ti,ab OR "Myocardial Preinfarction*":ti,ab OR "Myocardium Infarct*":ti,ab OR "Premonitory Infarction Sign":ti,ab OR "Stenocardia*":ti,ab OR "Subendocardial Infarct*":ti,ab)

#1 AND #2 AND

Limit: Trials

Limit: Publication Year 1980-2019

SinoMed

#1 Statins

(他汀[常用字段] OR 明维欣[常用字段] OR 舒降之[常用字段] OR 京必舒新[常用字段] OR 立普妥[常用字段] OR 阿乐[常用字段] OR 可定[常用字段] OR 瑞旨[常用字段] OR 普拉固[常用字段] OR 美百乐镇[常用字段] OR 来适可[常用字段] OR 力清之[常用字段] OR 冠爽[常用字段])

#2 Coronary Artery Disease

(冠心病[常用字段] OR 心绞痛[常用字段] OR 心力衰竭[常用字段] OR 心衰[常用字段] OR 冠状[常用字段] OR 粥样[常用字段] OR 心肌[常用字段] OR 心梗[常用字段])

#3 RCT Filter

("试验"[常用字段] OR "随机"[常用字段] OR "多中心"[常用字段] OR "双盲"[常用字段] OR "单盲"[常用字段] OR "安慰剂"[常用字段] OR "对比"[常用字段] OR "对照"[常用字段] OR "比较"[常用字段] OR "分组"[常用字段] OR "分为"[常用字段])

#4 Publication Year

(1980-2019[日期])

#1 AND #2 AND #3 AND #4

CNKI (China National Knowledge Infrastructure)

#1 Statins

(TKA=他汀 OR TKA=明维欣 OR TKA=舒降之 OR TKA=京必舒新 OR TKA=立普妥 OR TKA=阿乐 OR TKA=可定 OR TKA=瑞旨 OR TKA=普拉固 OR TKA=美百乐镇 OR TKA=来适可 TKA=OR TKA=力清之 TKA=OR 冠爽)

#2 Coronary Artery Disease

(TKA=冠心病 OR TKA=心绞痛 OR TKA=心力衰竭 OR TKA=心衰 OR TKA=冠状 OR TKA=粥样 OR TKA=心肌 OR TKA=心梗)

#3 RCT Filter

(TKA="试验" OR TKA="随机" OR TKA="多中心" OR TKA="双盲" OR TKA="单盲" OR TKA="安慰剂" OR TKA="对比" OR TKA="对照" OR TKA="比较" OR TKA="分组" OR TKA="分为")

#4 Publication Year

YE BETWEEN ('1980','2019')

#1 AND #2 AND #3 AND #4 Limit: 学术期刊

Wangfang

#1 Statins

(摘要:"他汀" OR 摘要:"明维欣" OR 摘要:"舒降之" OR 摘要:"京必舒新" OR 摘要:"立普妥" OR 摘要:"阿乐" OR 摘要:"可定" OR 摘要:"瑞旨" OR 摘要:"普拉固" OR 摘要:"美百乐镇" OR 摘要:"来适可" OR 摘要:"力清之" OR 摘要:"冠爽") OR (题名或关键词:"他汀" OR 题名或关键词:"明维欣" OR 题名或关键词:"舒降之" OR 题名或关键词:"京必舒新" OR 题名或关键词:"立普妥" OR 题名或关键词:"阿乐" OR 题名或关键词:"可定" OR 题名或关键词:"瑞旨" OR 题名或关键词:"普拉固" OR 题名或关键词:"美百乐镇" OR 题名或关键词:"来适可" OR 题名或关键词:"力清之" OR 题名或关键词:"冠爽")

#2 Coronary Artery Disease

(摘要:"冠心病" OR 摘要:"心绞痛" OR 摘要:"心力衰竭" OR 摘要:"心衰" OR 摘要:"冠状" OR 摘要:"粥样" OR 摘要:"心肌" OR 摘要:"心梗") OR (题名或关键词:"冠心病" OR 题名或关键词:"心绞痛" OR 题名或关键词:"心力衰竭" OR 题名或关键词:"心衰" OR 题名或关键词:"冠状" OR 题名或关键词:"粥样" OR 题名或关键词:"心肌" OR 题名或关键词:"心梗")

#3 RCT Filter

(摘要:"试验" OR 摘要:"随机" OR 摘要:"多中心" OR 摘要:"双盲" OR 摘要:"单盲" OR 摘要:"安慰剂" OR 摘要:"对比" OR 摘要:"对照" OR 摘要:"比较" OR 摘要:"分组" OR 摘要:"分为") OR (题名或关键词:"试验" OR 题名或关键词:"随机" OR 题名或关键词:"多中心" OR 题名或关键词:"双盲" OR 题名或关键词:"单盲" OR 题名或关键词:"安慰剂" OR 题名或关键词:"对比" OR 题名或关键词:"对照" OR 题名或关键词:"比较" OR 题名或关键词:"分组" OR 题名或关键词:"分为")

#4 Publication Year

日期:1980-2019

#1 AND #2 AND #3 AND #4 资源类型: 期刊论文

VIP

#1 Statins

(M="他汀" OR M="明维欣" OR M="舒降之" OR M="京必舒新" OR M="立普妥" OR M="阿乐" OR M="可定" OR M="瑞旨" OR M="普拉固" OR M="美百乐镇" OR M="来适可" OR M="力清之" OR M="冠爽") OR (R="他汀" OR R="明维欣" OR R="舒降之" OR R="京必舒新" OR R="立普妥" OR R="阿乐" OR R="可定" OR R="瑞旨" OR R="普拉固" OR R="美百乐镇" OR R="来适可" OR R="力清之" OR R="冠爽")

#2 Coronary Artery Disease

(M="冠心病" OR M="心绞痛" OR M="心力衰竭" OR M="心衰" OR M="冠状" OR M="粥样" OR M="心肌" OR M="心梗") OR (R="冠心病" OR R="心绞痛" OR R="心力衰竭" OR R="心衰" OR R="冠状" OR R="粥样" OR R="心肌" OR R="心梗")

#3 RCT Filter

(M="试验" OR M="随机" OR M="多中心" OR M="双盲" OR M="单盲" OR M="安慰剂" OR M="对比" OR M="对照" OR M="比较" OR M="分组" OR M="分为") OR (R="试验" OR R="随机" OR R="多中心" OR R="双盲" OR R="单盲" OR R="安慰剂" OR R="对比" OR R="对照" OR R="比较" OR R="分组" OR R="分为")

#1 AND #2 AND #3 年份: 收录起始年-2019

Supplement 2 Using Bootstrap to Construct Confidence Interval

The following steps calculate the confidence interval of extra MACEs as an example.

Step 1 For each trial, calculate risk difference of extra MACEs between statins group and control group.

$$RD = \frac{MACE_{Control}}{N_{Control}} - \frac{MACE_{Statins}}{N_{Statins}}$$

$N_{control}$: Number of patients analyzed in the control group.

$MACE_{Control}$: Number of MACEs occurred among patients in the control group.

$N_{Statins}$: Number of patients analyzed in the statins group.

$MACE_{Statins}$: Number of MACEs occurred among patients in the statins group.

Step 2 For each trial, calculate the standard error of risk difference of extra MACEs.

$$\sqrt{\frac{RD_{Statins}(1 - RD_{Statins})}{RD_{Statins}} - \frac{RD_{Control}(1 - RD_{Control})}{RD_{Control}}}$$

Step 3 Construct the distribution of each risk difference assuming that risk difference follows normal distribution. The mean of the normal distribution is obtained from Step 1, while the standard deviation of the normal distribution is the standard error calculated from Step 2.

Step 4 Repeat Step 1-3 for all the trials.

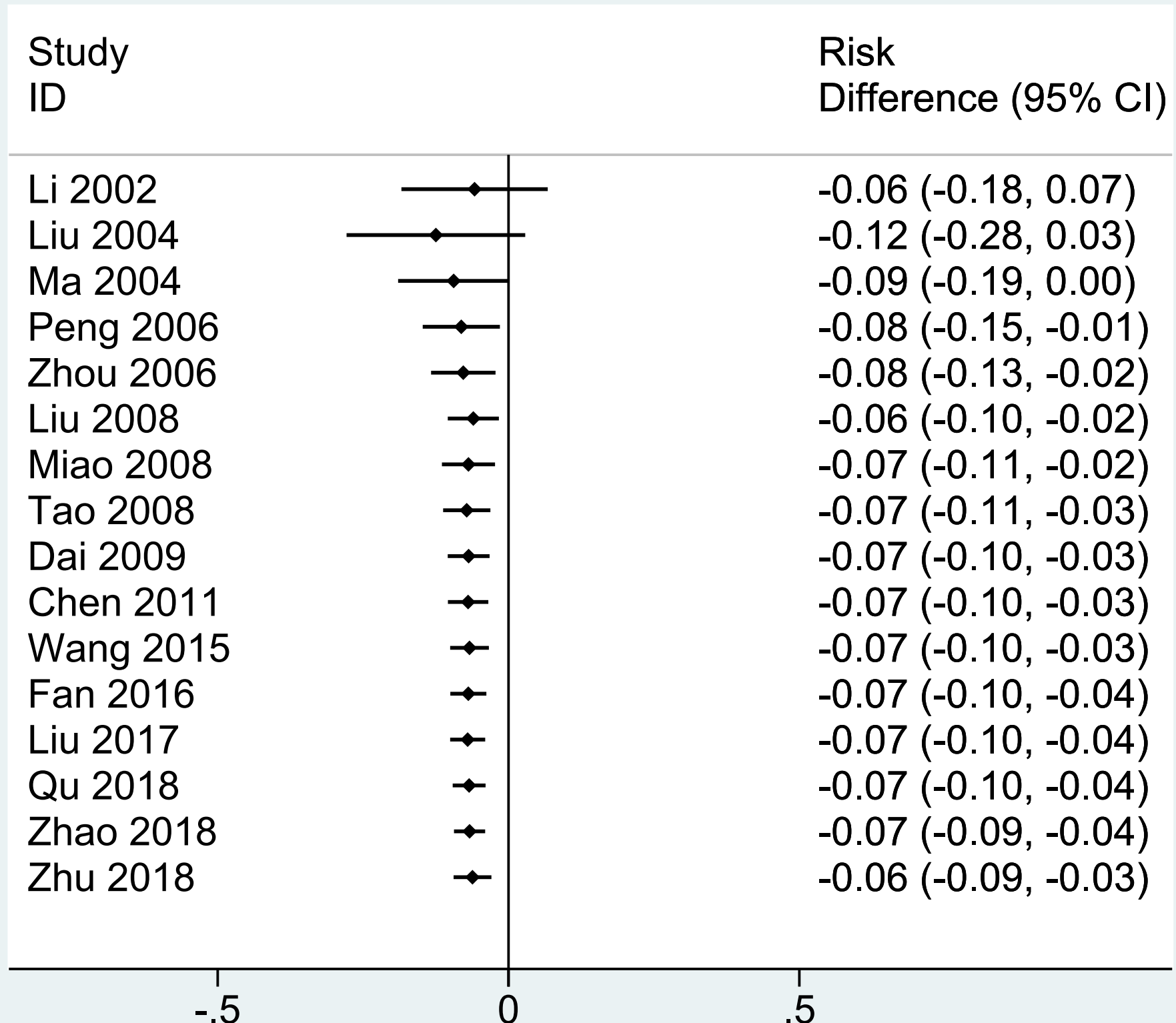
Step 5 Draw a random value from the normal distribution of risk difference and calculate the extra MACEs based on that value.

Step 6 Repeat Step 5 for all the trials and sum the extra MACEs together.

Step 7 Repeat Step 5-6 for 1,000 times. Sort the 1,000 summed extra MACEs ascendingly. The 26th value is the lower level of confidence interval, while the 974th value is the upper level of confidence interval. The 500th value is the mean of summed extra MACEs.

Supplement 3 Cumulative Meta-Analysis

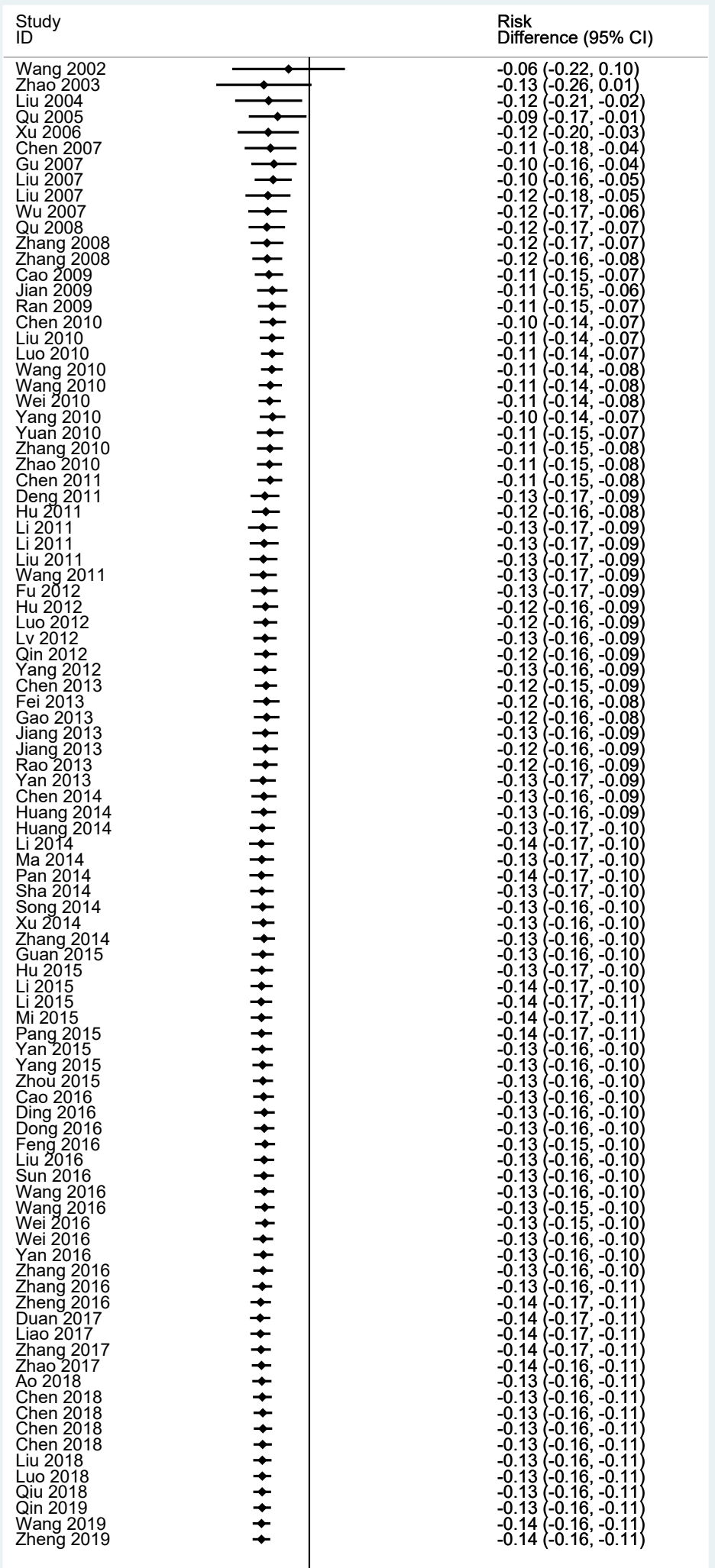
Patients with Stable Angina Pectoris



This cumulative meta-analysis is based on a composite outcome of death, new or recurrent myocardial infarction, and revascularization.

Supplement 4 Cumulative Meta-Analysis

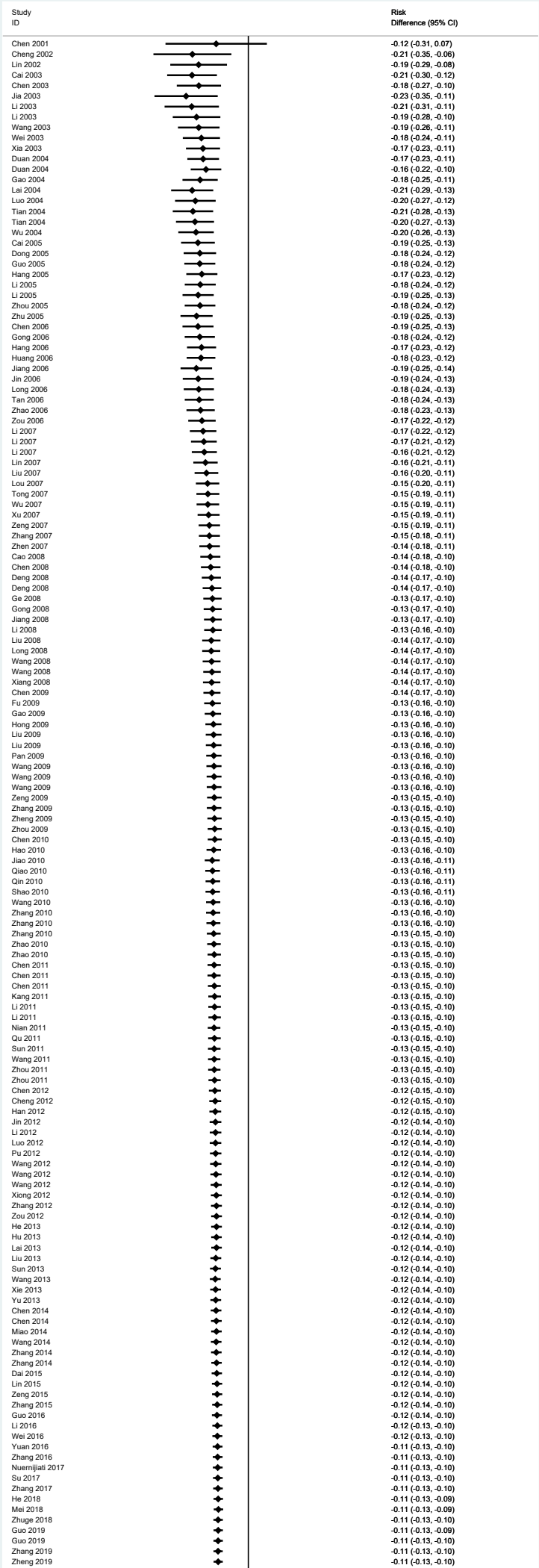
Patients with Myocardial Infarction



This cumulative meta-analysis is based on a composite outcome of death, new or recurrent myocardial infarction, and revascularization.

Supplement 5 Cumulative Meta-Analysis

Patients with Unstable Angina Pectoris



This cumulative meta-analysis is based on a composite outcome of death, new or recurrent myocardial infarction, and revascularization.