

Supplementary Materials

Appendix 1: Search Strategy

PubMed

(VTE[tiab] OR venous thromboembolism[tiab] OR DVT[tiab] OR deep vein thrombosis[tiab] OR PE[tiab] OR pulmonary embolism[tiab] OR “thromboembolism”[MeSH])

AND

(prevention[tiab] OR prophylaxis[tiab] OR lovenox[tiab] OR heparin[tiab] OR enoxaparin[tiab] OR anticoagulant[tiab] OR anticoagulants[MeSH] OR mechanical[tiab] OR “heparin”[MeSH] OR tinzaparin[tiab] OR dalteparin[tiab] OR Fragmin[tiab] OR Innohep[tiab])

AND

(Gynecolog*[tiab] OR Gynaecolog*[tiab] OR Gynecologic Oncolog*[tiab] OR “gynecology”[MeSH] OR “Genital Neoplasms, Female/surgery”[MeSH])

NOT

(obstetric*[tiab] OR cesarean[tiab])

EMBASE

(VTE:ti,ab OR ‘venous thromboembolism’:ti,ab OR DVT:ti,ab OR ‘deep vein thrombosis’:ti,ab OR PE:ti,ab OR ‘pulmonary embolism’:ti,ab OR ‘venous thromboembolism’/mj)

AND

(prevention:ti,ab OR prophylaxis:ti,ab OR lovenox:ti,ab OR heparin:ti,ab OR enoxaparin:ti,ab OR anticoagulant:ti,ab OR ‘anticoagulant agent’/mj OR mechanical:ti,ab OR ‘heparin derivative’/mj OR tinzaparin:ti,ab OR dalteparin:ti,ab OR Fragmin:ti,ab OR Innohep:ti,ab)

AND

(Gynecolog*:ti,ab OR Gynaecolog*:ti,ab OR Gynecologic Oncolog*:ti,ab OR ‘gynecologic disease’/mj OR ‘female genital tract tumor’/mj)

NOT

(obstetric*:ti,ab OR cesarean:ti,ab)

Table 2. Quality assessment of the included studies

First author	Selection	Comparability	Exposure	Quality Assessment
Ailawadi	***	**	**	High
Bouchard-Fourtier	***	-	**	Poor
Clarke-Pearson	***	**	***	High
Corr	**	**	**	High
Einstein	***	*	***	High
Freeman	***	**	***	High
Hansen	***	**	***	High
Hopp	**	*	-	Poor
Maxwell	RCT 3/5 Jadad			
Pelkofski	***	**	-	Poor
Piver	***	-	*	Poor
Renata	***	-	*	Poor
Swenson	***	-	**	Poor
Ugaki	****	-	-	Poor
Whitworth	***	-	*	Poor

Figure 5. Forest plot of subgroup analysis comparing preoperative use of UFH versus LMWH as pre-operative chemoprophylaxis.

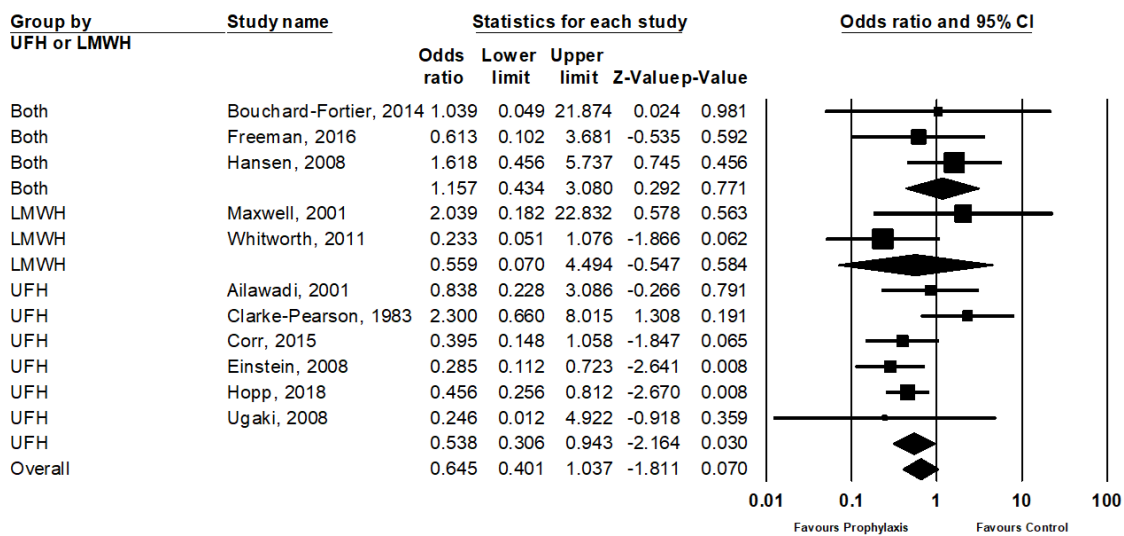


Figure 6. Forest plot of subgroup analysis of VTE comparing pre-operative chemoprophylaxis by those studies that controlled for post-operative prophylaxis (equivalent post-operative care) and those that did not (non-equal post-operative care)

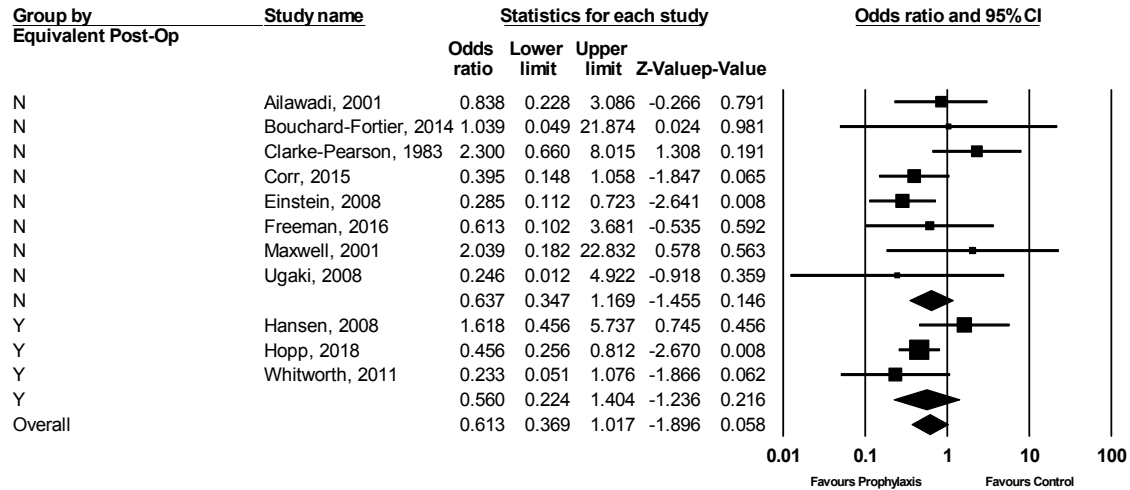


Figure 7. Forest plot of subgroup analysis of VTE by studies with concurrent use of sequential compression devices (SCD) or not.

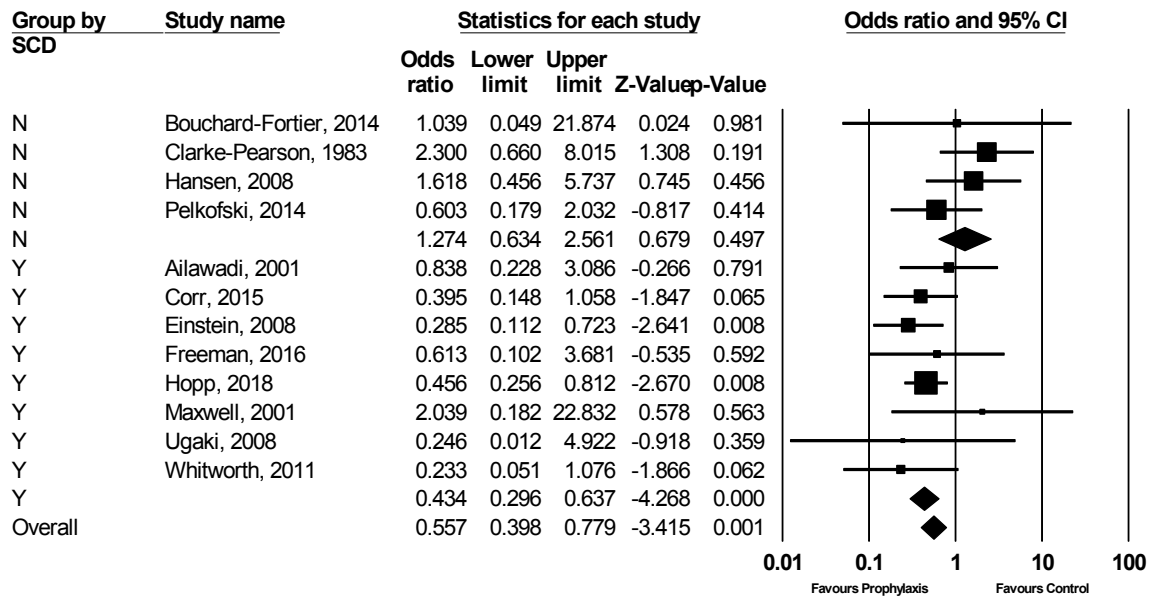


Figure 8. Forest plot of subgroup analysis according to quality of studies

