

Paladin is a phosphoinositide phosphatase that regulates endosomal signaling and angiogenesis

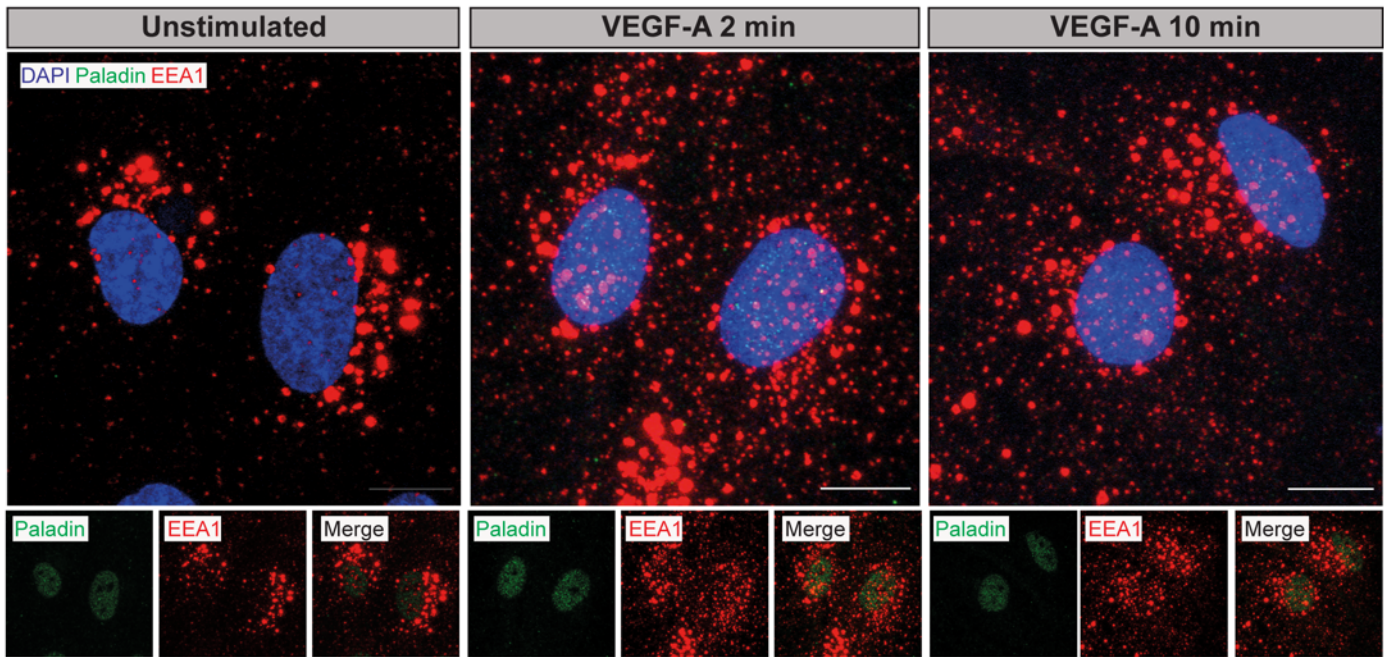
Anja Nitzsche, Riikka Pietilä, Dominic T. Love, Chiara Testini, Takeshi Ninchoji, Ross O. Smith, Elisabet Ekvärn, Jimmy Larsson, Francis P. Roche, Isabel Egaña, Suvi Jauhiainen, Philipp Berger, Lena Claesson-Welsh and Mats Hellström

APPENDIX

S1: Control staining for Paladin after siRNA-mediated Paladin knockdown

S2: Actual p-values

Appendix figure S1



EEA1 (red), Paladin (green) and DAPI (blue) staining of siRNA *PALD1* knock-down cells after VEGF-A stimulation for indicated time points

Appendix S2

Exact p-values

Figure 1	Left	Right
a	0.0438	0.0362
d	0.0122	0.0040
f (top)	0.0009	<0.0001
f (bottom)	0.0062	0.0240
h	0.0387	

Figure 2	Left	Right	Figure EV 2	Left	Right
d	0.0136		a	0.0105	0.0006
f (top)	0.0035	0.0364	d	0.0039	
f (bottom)	0.0021	0.0029			
h (top)	<0.0001				
h (bottom)	0.0001				

Figure 3	Left	Right	Figure EV 3	Left	Right
b	0.0443		a	0.0302	0.0017
d	0.0102	0.0035			
f	0.0099				

Figure 4	Left	Right	Figure EV 4	Left	Right
b	0.0051		a	0.0191	
d	0.0047		b	0.0029	0.0403
f	0.0138	0.0004	c	0.0371 (first)	3.25E-10 (last)
h	0.0143				
i	0.0192				
l	0.0341				
m	0.0071	0.0151			

Figure 5	
b	0.0265
e	0.0015
h	0.0451